

Specifications

Angular stabilization ranges:

| | |
|-----------------------|----------|
| - Pitch (at 0° roll): | ≤± 10.5° |
| - Roll (at 0° pitch): | ≤± 10.5° |
| - Yaw (drift): | ≤± 25.0° |

| | |
|---|--------------|
| Residual angular rate of the horizontal axis ¹ : | < 0.5°/s rms |
|---|--------------|

Deviation from perpendicular¹:

| | |
|--|-------------|
| - Without IMU support with feature 'Performance Boost' | ≤ 0.3° rms |
| - With IMU support ² | ≤ 0.08° rms |

| | |
|-----------|--------|
| Interface | RS 232 |
|-----------|--------|

| | |
|---------|-------------|
| Payload | 0 ... 35 kg |
|---------|-------------|

| | |
|---------------------|------------------------|
| Operational voltage | 28 VDC (24 ... 30 VDC) |
|---------------------|------------------------|

| | |
|-----------------------------|-----------------------|
| Power consumption at 28 VDC | 30 W rms / peak 120 W |
|-----------------------------|-----------------------|

| | |
|----------------------|-------------|
| Recommended pre-fuse | 15 Amp fuse |
|----------------------|-------------|

| | |
|-----------------------|-------------------|
| Operating temperature | -25 °C ... +60 °C |
|-----------------------|-------------------|

| | |
|---------------------|-------------------|
| Storage temperature | -40 °C ... +85 °C |
|---------------------|-------------------|

| | |
|------------------|--------|
| Useable diameter | 270 mm |
|------------------|--------|

| | |
|------|-------|
| Mass | 14 kg |
|------|-------|

| | | | |
|--|--------|-------|------------------|
| Dimensions DSM 400 (regular leveling positions) | Length | Width | Height |
| | 460 | 430 | 165 ³ |
| | mm | mm | mm |

| | |
|-------------------|--|
| Applied standards | RTCA DO-160-G, EUROCAE-14G, ISO 7137, 2006/42/EC Machinery |
|-------------------|--|

Custom-Made Precision



Ahead with Precision

Space for your notes

SOMAG AG Jena
Am Zementwerk 8
D-07745 Jena
Germany

Phone: +49 3641 633 68 0
Fax: +49 3641 633 68 99
E-Mail: info@somag-ag.de
Web: www.somag-ag.de



DSM 400



Airborne

Land

Marine

Worldwide

Preliminary data, subject to change

¹ Vehicle angular motion < 10°/s and with typical data acquisition profile frequency spectrum

² Deviation from perpendicular depends on accuracy of used IMU

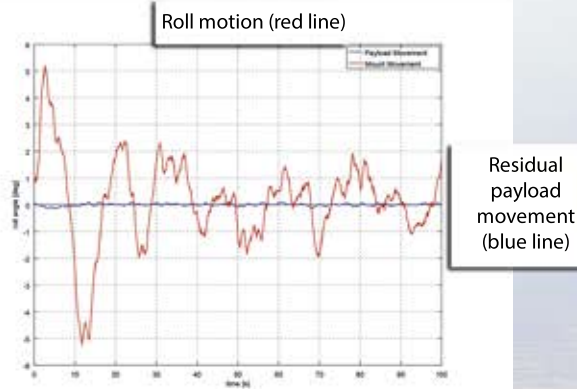
³ Minimum: 131 mm/ Maximum 199 mm

⁴ Pictures © Vexcel Imaging GmbH; RIEGL LMS; ITRES; Phase One A/S; Swiss Flight Services SA; Norsk Elektro Optikk AS
Illustrations, descriptions and technical data are not binding.
All rights reserved. Printed in Germany.
Copyright SOMAG AG Jena, Jena, Germany, 2017.

Features/Advantages

- ▶ Powerful Mount for medium format cameras and sensors
› High payload/minimum weight
- ▶ Drastic reduction of angular rates
› Image motion reduction
- ▶ Leveling option
› Possibility of using external IMU data (see data example)
- ▶ Independent operation
› Without external IMU possible
- ▶ Passive Vibration Isolation Ring
› Decoupling of high frequency oscillations
- ▶ Applied standards:
› EUROCAE-14G, RTCA/DO-160G, ISO 7137, 2006/42/EC Machinery
- ▶ SOMAG Mount Control App to setup the best performance for your device and monitor various parameters

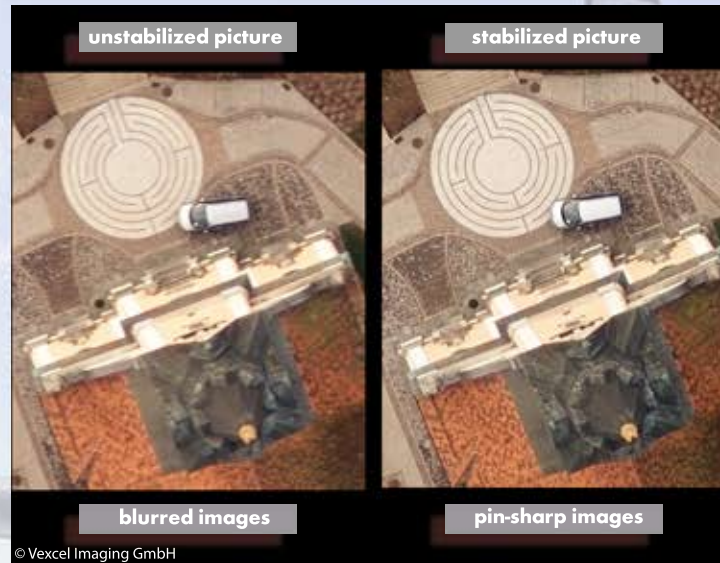
Performance Example



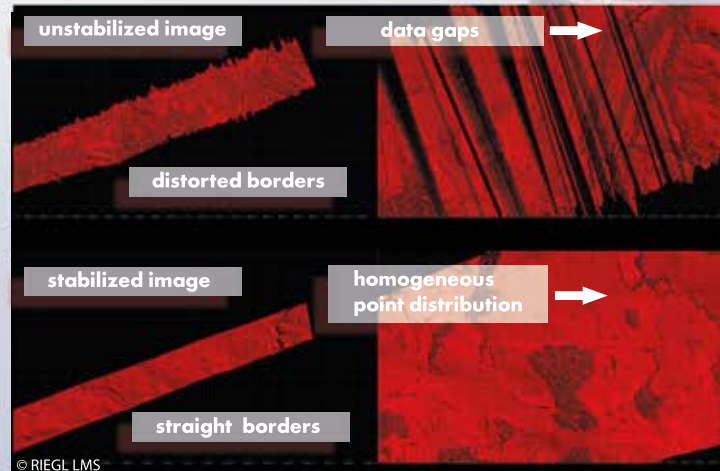
Mount performance with external IMU data

Data Examples

Aerial Image Example



Aerial LiDAR Data Example



Application Examples

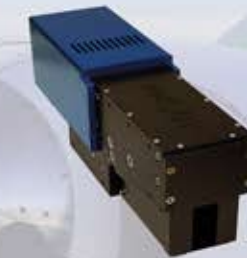
Phase One 190MP

Riegl VUX-1LR



NEO VNIR - 1800

Itres MicroCASI 1920



... ANY OTHER SENSOR IS POSSIBLE!

DSM 400