

# WHICH OF THE TOP 4 ELBOW PROBLEMS DO YOU NEED TO SOLVE?

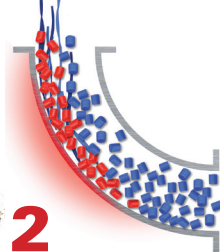


**1**

## PROBLEM

### **Wear and failure when conveying abrasives**

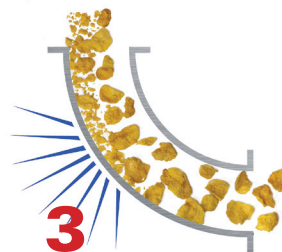
such as sand, glass, alumina or mineral filled plastic pellets incur never-ending costs of replacement elbows, labor and downtime.



**2**

### **Formation of streamers, angel hair and snake skins**

when conveying pelletized resins and compounds causes downstream quality problems.



**3**

### **Breakage and dusting of fragile materials**

such as pet food, coffee beans or grains, decrease product quality, consistency and salability while increasing waste.



**4**

### **Plugging and build-up**

when conveying sugar, rubber pellets, hot melt adhesives, clay and other pressure- and heat-sensitive materials prone to build-up.

## CAUSE

Abrasives hit the outside radius of conventional impact elbows at high speed, continually wearing through the elbow wall.

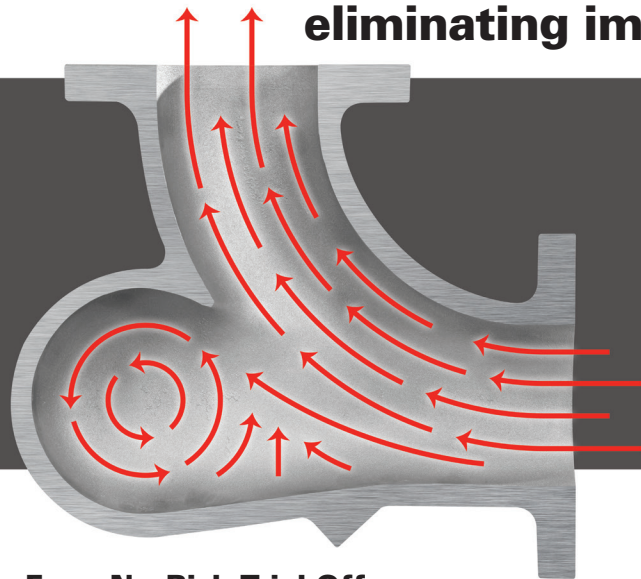
Pellets skidding against the outside radius of conventional elbows create friction and heat, melting pellet surfaces, forming streamers.

Friable materials hit the outside radius of conventional impact elbows at high speed, degrading the material and generating fines.

Materials skidding against the outside radius of conventional elbows create friction and heat, causing product build-up.

## SOLUTION

### **Smart Elbow® Deflection Elbow from HammerTek® ends problems by eliminating impact and frictional heat**



*Unlike conventional "impact" elbows and "plugged-tee" elbows that rely on material impact to change direction, HammerTek's Smart Elbow® design employs a spherical chamber that protrudes partially beyond the desired 90° or 45° pathway, causing a ball of material suspended in air to rotate. Since the ball of material rotates in the same direction as the airstream that powers it, incoming material is cushioned by the ball's rotation, and is gently deflected around the bend.*

*By preventing impact with the elbow wall, HammerTek's Smart Elbow® deflection elbow virtually eliminates costly elbow wear, material degradation, melting and plugging.*

### **Free, No-Risk Trial Offer**

See how Smart Elbow® deflection elbows eliminate conventional and plugged-tee impact elbow problems—at no cost or obligation.

**1-610-814-2273 • sales@HammerTek.com**  
**www.HammerTek.com**



# HAMMERTeK®

EE-0435



45° and 90° elbows available in cast iron, carbon steel, aluminum, stainless steel and specialized alloys with flanges and socket-weld ends in tube, schedule 10 pipe and schedule 80 pipe sizes in diameters from 1.25 to 18 inch.