

Mouse Anti-Cadherin-E/CD324 [CDH1/1525]: MC0165, MC0165RTU7

Intended Use: For Research Use Only

Description: E-Cadherin is a transmembrane glycoprotein, plays an important role in epithelial cell adhesion. A decreased expression of E-Cadherin is associated with metastatic potential and poor prognosis in breast cancer and esophagus cancer. In combination with p120 Catenin or Cytokeratin, it is useful for the differentiation between ductal (E-Cadherin positive) and lobular (E-Cadherin negative) breast carcinomas. It may also help in diagnosis of mesothelioma.

Specifications:

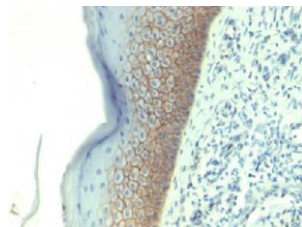
Clone: CDH1/1525
Source: Mouse
Isotype: IgG1k
Reactivity: Human
Localization: Membrane
Formulation: Antibody in PBS pH7.4, containing BSA and $\leq 0.09\%$ sodium azide (NaN₃)
Storage: Store at 2°- 8°C
Applications: IHC, Flow Cyt., ICC/IF, WB
Package:

Description	Catalog No.	Size
Cadherin-E/CD324 Concentrated	MC0165	1 ml
Cadherin-E/CD324 Prediluted	MC0165RTU7	7 ml

IHC Procedure*:

Positive Control Tissue: Colon, colon cancer
Concentrated Dilution: 50-200
Pretreatment: Citrate pH6.0, 15 minutes using Pressure Cooker, or 30-60 minutes using water bath at 95°-99°C
Incubation Time and Temp: 30-60 minutes @ RT
Detection: Refer to the detection system manual

* Result should be confirmed by an established diagnostic procedure.



FFPE human skin stained with anti-Cadherin E using DAB

References:

1. Relationship among mismatch repair deficiency, CDX2 loss, p53 and E-cadherin in colon carcinoma and suitability of using a double panel of mismatch repair proteins by immunohistochemistry. Sayar I, et al. Pol J Pathol. Sep;66(3):246-53, 2015.
2. C6orf106 enhances NSCLC cell invasion by upregulating vimentin, and downregulating E-cadherin and P120ctn. Zhang X, et al. Tumour Biol. Aug;36(8):5979-85, 2015.

Doc. 100-MC0165
Rev. A