

Mouse Anti-CD144/VE-Cadherin [16B1]: MC0318

Intended Use: For Research Use Only

Description: This antibody recognizes extracellular epitope 2 within the N-terminal Ig domain of human CD147. It is expressed more intensely on thymocytes than on mature peripheral blood T cells. CD147 is important in spermatogenesis, embryo implantation, neural network formation, and tumor progression. It stimulates the production of interstitial collagenase, gelatinase A, stromelysin-1 and various metalloproteinases (MMPs) by fibroblasts. These enzymes are important factors in cancer invasion and metastasis.

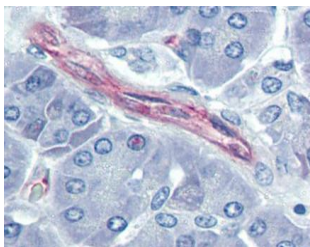
Specifications:

Clone: 16B1
Source: Mouse
Isotype: IgG1
Reactivity: Human
Localization: Membrane
Formulation: Antibody in PBS pH7.4, containing BSA and $\leq 0.09\%$ sodium azide (NaN₃)
Storage: Store at 2°- 8°C
Applications: IHC, Flow Cyt., WB
Package:

Description	Catalog No.	Size
CD144/VE-Cadherin Concentrated	MC0318	1 ml

IHC Procedure*:

Positive Control Tissue: Placenta, pancreas
Concentrated Dilution: 10-50
Pretreatment: Citrate pH6.0 or EDTA pH8.0, 15 minutes using Pressure Cooker, or 30-60 minutes using water bath at 95°-99°C
Incubation Time and Temp: 30-60 minutes @ RT
Detection: Refer to the detection system manual
* Result should be confirmed by an established diagnostic procedure.



FFPE human pancreas stained with anti-CD144 using AEC

References:

1. 96 perfusable blood vessels to study vascular permeability in vitro. van Duinen V, et al. Sci Rep 7:18071, 2017.
2. Vasculogenic mimicry in small cell lung cancer. Stuart C. Williamson, et al. Nat Commun. 2016 Nov 9, 2016.
3. A Hereditary Enteropathy Caused by Mutations in the SLCO2A1 Gene, Encoding a Prostaglandin Transporter. Umeno J, et al. Genetics. 11:e1005581, 2015.

Doc. 100-MC0318
Rev. A