

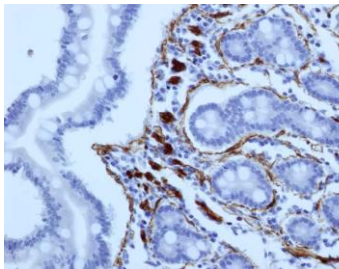
# Medaysis

## Head & Neck Cancer Markers

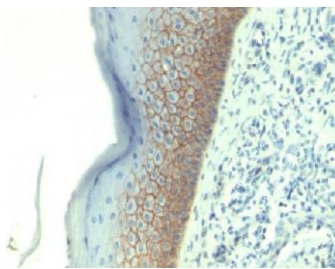


In 2015 head and neck cancers globally affected more than 5.5 million people (mouth 2.4 million, throat 1.7 million, larynx 1.4 million) and resulted in more than 379,000 deaths (mouth 146,000, throat 127,400, larynx 105,900). Together they are the seventh most frequent cancer and the ninth most frequent cause of death from cancer. In the United States about one percent of people are affected at some point in their life and males are affected twice as often as females. The usual age at diagnosis is between 55 and 65 years. The average 5-year survival following diagnosis in the developed world is 42 to 64%.

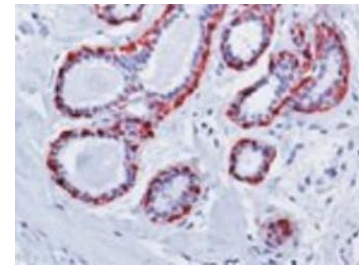
Wikipedia



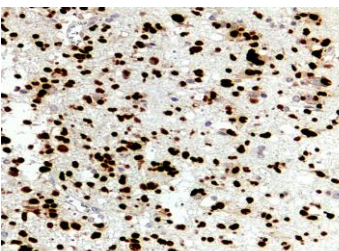
FFPE human small intestine stained with anti-Actin SM [1A4]



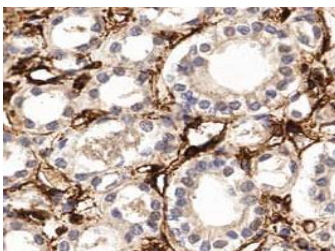
FFPE human skin stained with anti-Cadherin E [CDH1/1525]



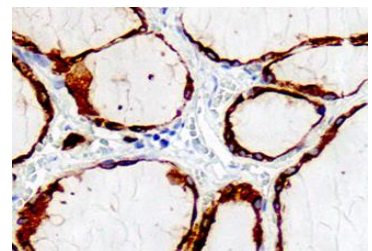
FFPE human breast stained with anti-Calponin [CALP]



FFPE human oligodendroglioma stained with anti-SOX2 [MD113R]



FFPE human kidney stained with anti-Vimentin [V9]



FFPE human thyroid stained with anti-TPO [MD118R]

## Head & Neck Cancer Markers

Name	Cat. No.	Application
Actin SM [1A4]	MC0004	Useful marker for stromal fibroblasts in HNSCC
AP (Intestinal) [V17.1]	MC0309	Studies show that serum alkaline phosphatase level in the advanced stage was significantly higher than early stage of OSCC, and the serum ALP level in OSCC patients with bone involvement (BI) by local extension of tumor was significantly higher than OSCC without BI
AP (Placental) [ALP/870]	MC0915	
AP (tissue-non) [ALAP/597]	MC0101	
AR [AR441]	MC0609	Useful in differentiating salivary duct ca (+) from other salivary gland tumors (-). Its combination with CK7, GCDFP-15 & CK HMW may identify salivary duct ca in men with unknown PSA+ metastatic ca
AR [MD124R]	RM0004	
AR [SP107]	RM0218	
Cadherin-E [CDH1/1525]	MC0165	Co-evaluation of E-cadherin and Vimentin might be a valuable tool for predicting OSCC outcome
Cadherin-E [MD128R]	RM0088	
Calcitonin [SP17]	RM0222	May help identify a wide spectrum of C-cell proliferative abnormalities
Calponin [CALP]	MC0033	Useful in differentiating subtypes of salivary gland tumors: epithelial-myoepithelial ca (outer layer+) & myoepithelial ca (+) from mucoepidermoid ca (-) & clear cell ca (-) & acinic cell ca (-)
Calponin [MD130R]	RM0015	
CD117/c-Kit [C117/370]	MC0233	May be useful in identifying some salivary gland tumors such as basal cell adenocarcinoma
CD117/c-Kit [EPR22566-344]	RM0067	
CD1a [O10]	MC0278	High CD1a(+) dendritic cell density is associated with improved disease-free survival in PTC
CD44 [156-3C11]	MC0666	Related to worse T category, N category, tumor grade and prognosis, in pharyngeal and laryngeal cancer
CD44 [MD132R]	RM0044	
CK14 [EPR17350]	RM0075	Regularly expressed in benign stratified squamous epithelium of the head and neck and HNSCC
CK14 [LL002]	MC0111	
CK20 [KRT20/1993]	MC0174	Paired with CK7, it may help identify thyroid ca & salivary gland ca (CK7+, CK20-) and head and neck ca (CK7-, CK20-)
CK20 [Ks20.8]	MC0114	
CK7 [OV-TL12/30]	MC0754	Expression in the salivary gland tumors with the exception of some mucoepidermoid and myoepithelial carcinomas and most acinic cell carcinomas, adenoid cystic carcinomas, and salivary duct carcinomas
DOG-1 [DOG1.1]	MC0362	Expression possibly indicates a subset of HNSCC
ERCC1 [EP219]	RM0093	Expression may decrease survival in advanced HNSCC treated with chemoradiotherapy
Galectin-3 [B2C10]	MC0132	May be useful in the differentiation of benign and malignant thyroid neoplasms.
GATA3 [C11]	MC0125	May have some utility in subtyping salivary gland tumors, particularly salivary duct carcinoma and mammary analogue secretory carcinoma

## Head & Neck Cancer Markers

Name	Cat. No.	Application
GATA3 [GATA3/2442]	MC0536	May have some utility in subtyping salivary gland tumors, particularly salivary duct carcinoma and mammary analogue secretory carcinoma
GATA3 [L50-823]	MC0538	
GATA3 [MD22R]	RM0325	
GFAP [GA-5]	MC0144	Useful in differentiating pleomorphic adenoma (+) from adenoid cystic ca (-) and polymorphous low-grade adenocarcinoma (-)
GFAP [MD104R]	RM0098	
HCG beta [HCGb/54]	MC0797	A marker for $\beta$ -hCG-positive anaplastic thyroid carcinoma
HPL/Galectin 1 [EPR3206(2)]	RM0109	May be a prognosis marker for head and neck cancer
HPL/Galectin 1 [MD20R]	RM0233	
HPV 16 [CAMVIR-1]	MC0801	Oral infection may be useful to identify HNSCC especially carcinomas of oropharynx and base of tongue
Ki67 [MDKI67]	MC0196	Useful in the differentiation of adenoid cystic ca, polymorphous low-grade adenocarcinoma, and pleomorphic adenoma
Ki67 [MIB-1]	MC0185	
Ki67 [SP6]	RM0255	
Mesothelial Cell [HBME-1]	MC0343	Labels thyroid papillary and follicular ca but not normal thyroid making it a valuable marker for distinguishing thyroid malignancies from benign thyroid lesions
Mesothelin [MSLN/2131]	MC0207	
NKX3.1 [MD149R]	RM0386	Loss of NKX3-1 may be a potential biomarker for occult LNM of OSCC.
OCT3/4 [C-10]	MC0561	Oct3/4 and Nanog represent probable CSC markers in HNSCC, which contribute to the development of DNM in part by enhancing cell motility and invasiveness
OCT4 [EPR17929]	RM0148	May be a critical regulator of stemness in head and neck squamous carcinoma cells
OCT4A [MD37R]	RM0340	May serve as a marker of "cancer stem cells" thought to be the driving force behind metastasis and recurrence
p16/INK4a [CDKN2A/4844R]	RM0140	May be a useful prognostic and predictive marker for oropharyngeal SCC
p16/INK4a [G175-405]	MC0280	
p53 [BP-53-12]	MC0218	Alterations as a biomarker of environmental exposure in head and neck cancers
p53 [DO-7]	MC0219	
p63 [4A4]	MC0221	Overexpression associates with poor prognosis in HNSCC
p63 [TP63/11]	MC0906	
PSA [A67-B/E3]	MC0925	May be a useful marker for some salivary gland tumors (especially salivary duct carcinoma)
PSA [EP109]	RM0166	
PSA [KLK3/2871R]	RM0163	

## Head & Neck Cancer Markers

Name	Cat. No.	Application
PSMA [MD105R]	RM0168	endothelial PSMA expression may have prognostic significance of OSCC
PTH [3H9]	MC0907	can be of value marker to identify if the tumor is of parathyroid origin
SOX10 [EP268]	RM0301	An important marker in melanoma, breast ca, gliomas and schwannomas
SOX10 [SOX10/1074]	MC0937	
SOX2 [MD113R]	RM0179	Expression in head and neck cancer may indicate a worse prognosis and correlated with tumor T stage, lymph node metastasis and TNM stage
SOX2 [SOX2/1791]	MC0299	
Thyroglobulin [2H11/6E1]	RM0146	Useful in identifying thyroid ca of papillary and follicular types and identifying tumors of thyroid origin when working with adenocarcinoma of unknown primary
TPO [MD118R]	RM0189	A useful marker for the differentiation of benign and malignant thyroid neoplasms
Vimentin [LN-6]	MC0965	Co-evaluation of E-cadherin and Vimentin might be a valuable tool for predicting OSCC patient outcome
Vimentin [V9]	MC0268	

Research Use Only