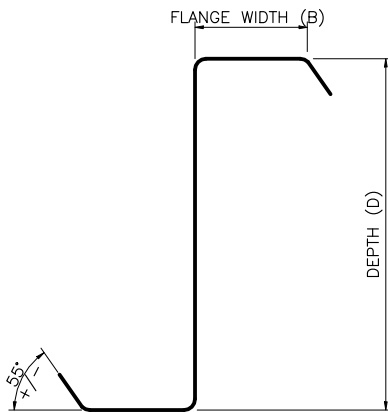
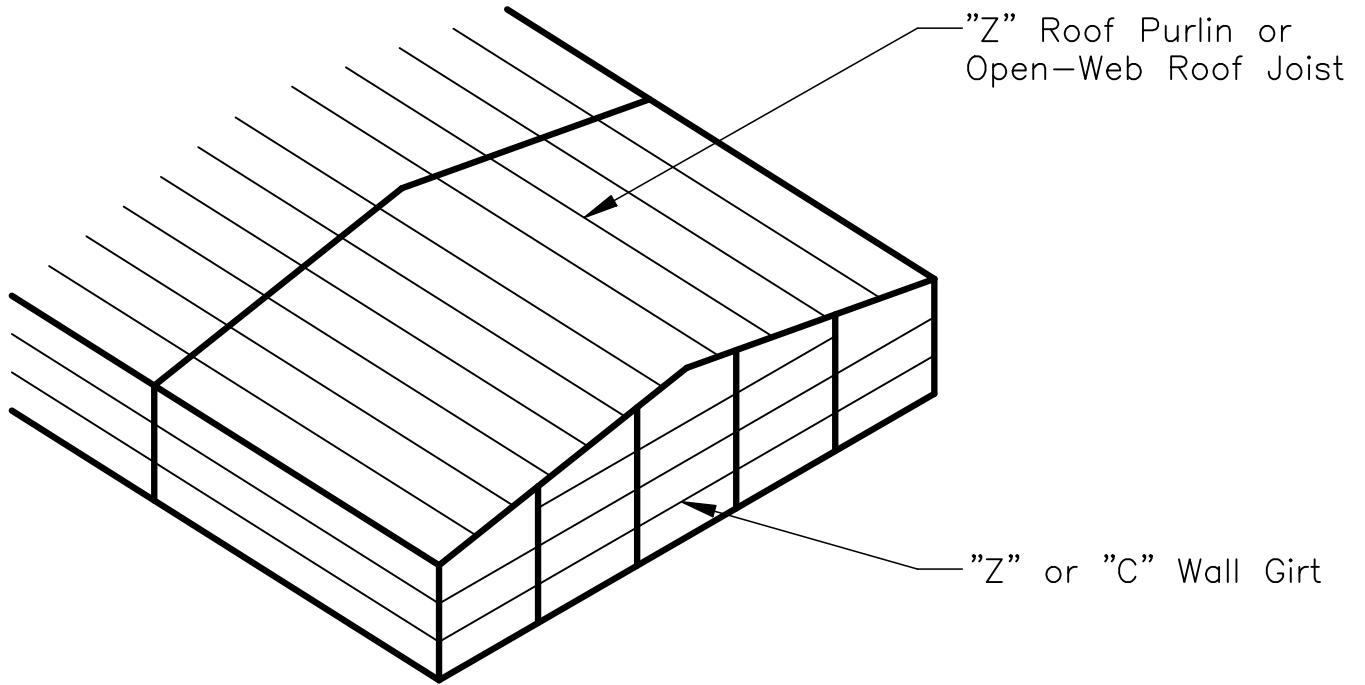


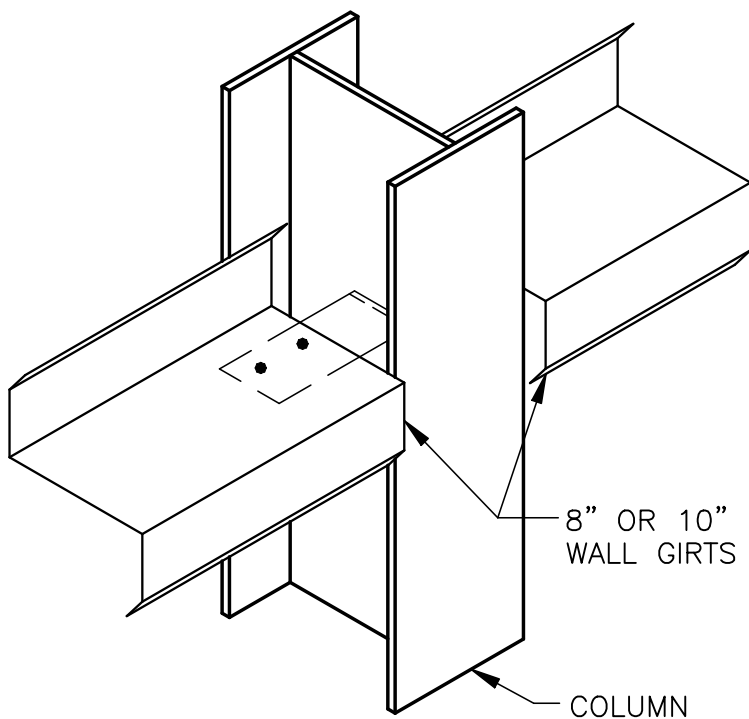
Discription of Secondary Framing and it's locations.



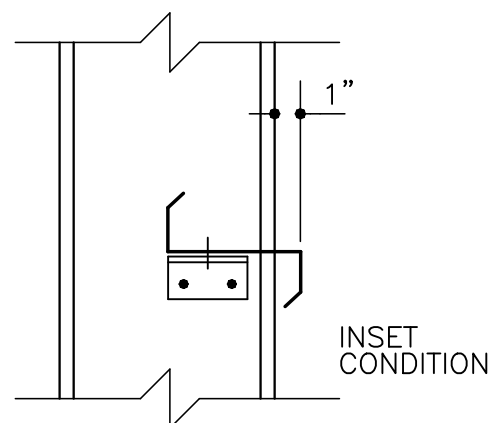
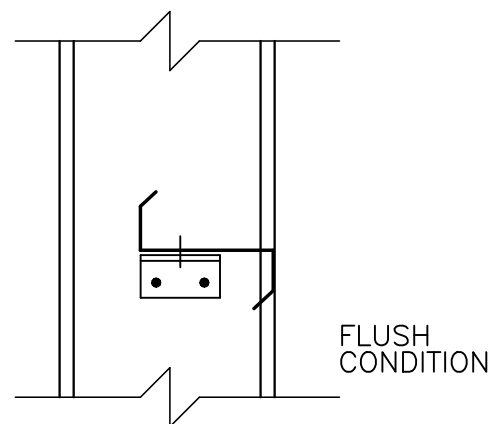
Description of wall girts shown installed in two different conditions using a "Z" member.

1) Flush condition

2) Inset condition



INSET CONDITION SHOWN
(FLUSH CONDITION SIMILAR)

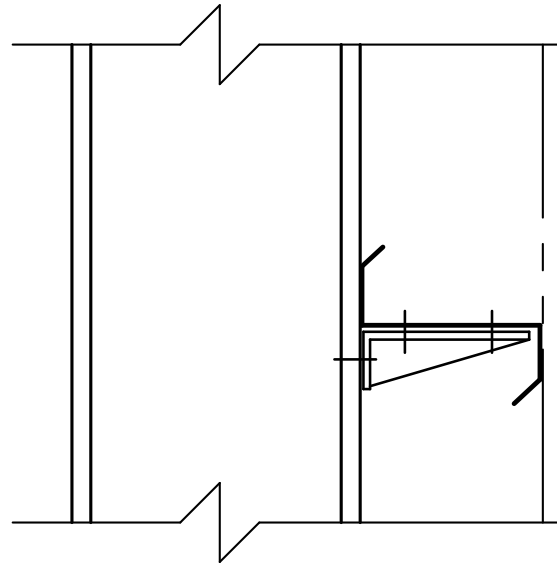


FLUSH GIRTS ARE NOT RECOMMENDED FOR PROJECTS WITH R-PANEL BECAUSE THE COLUMN LOCATIONS MAY BE VISIBLE FROM THE EXTERIOR OF THE BUILDING DUE TO THE INSULATION BEING COMPRESSED TO 0". SPECIAL CARE SHOULD BE CONSIDERED.

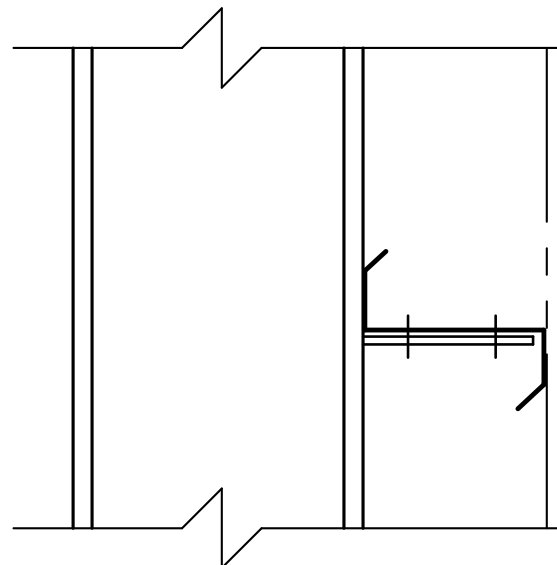
Description of wall girts shown installed using two different clips, in a By-Pass condition.

- 1) Bolt-on clips
- 2) Factory Welded clips

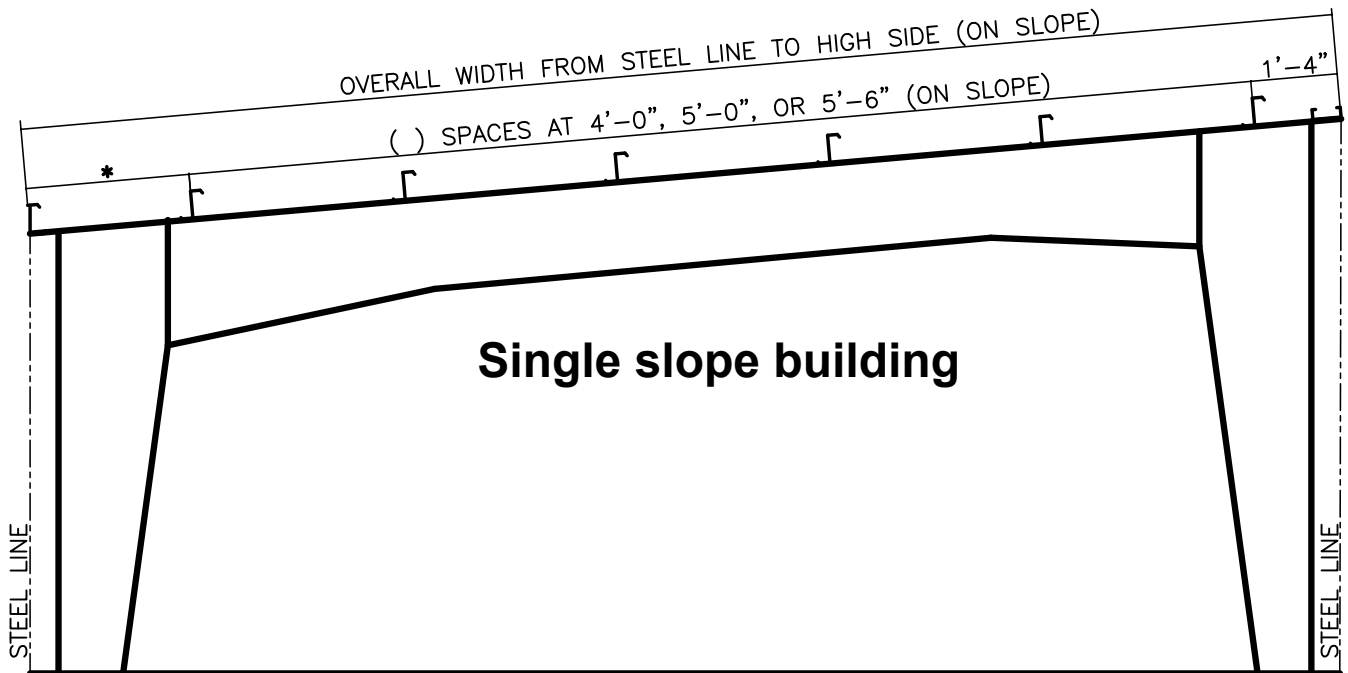
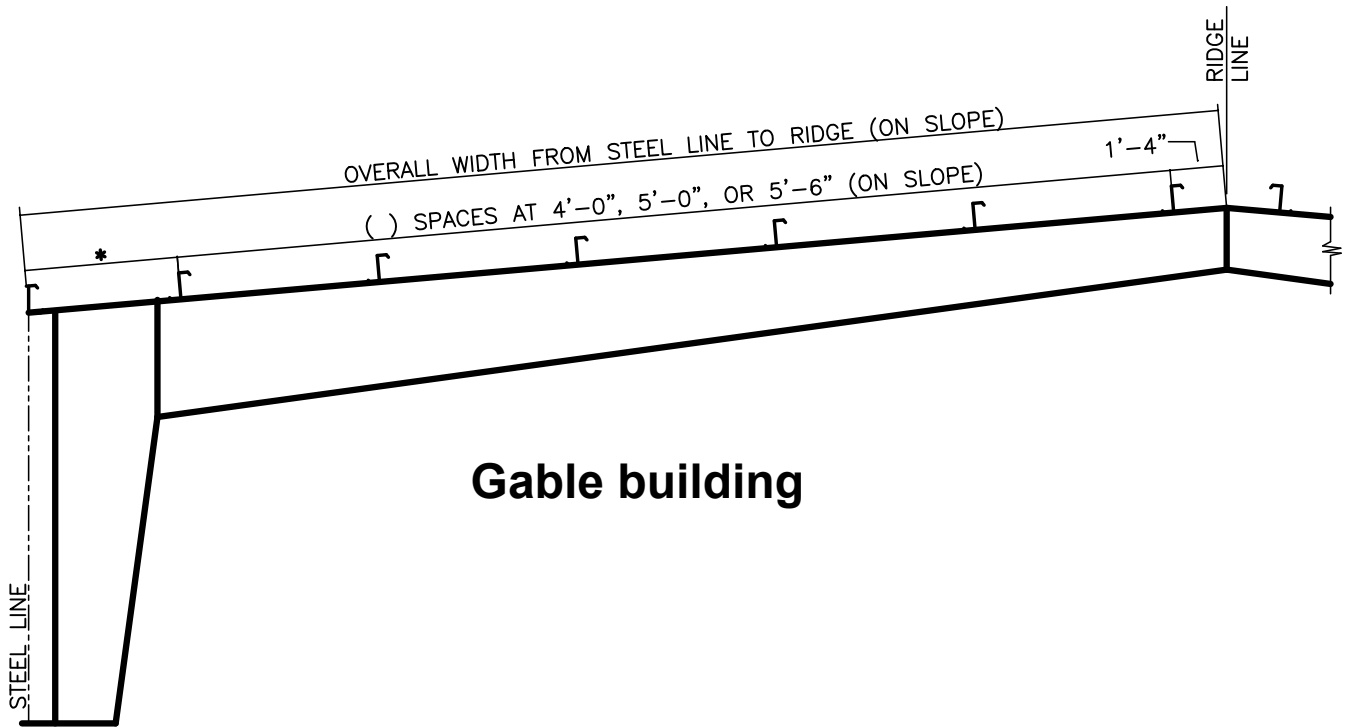
NOTES:
BY-PASS CONDITION WITH BOLT-ON CLIP TO COLUMN



NOTES:
BY-PASS CONDITON WITH FACTORY WELDED CLIP TO COLUMN



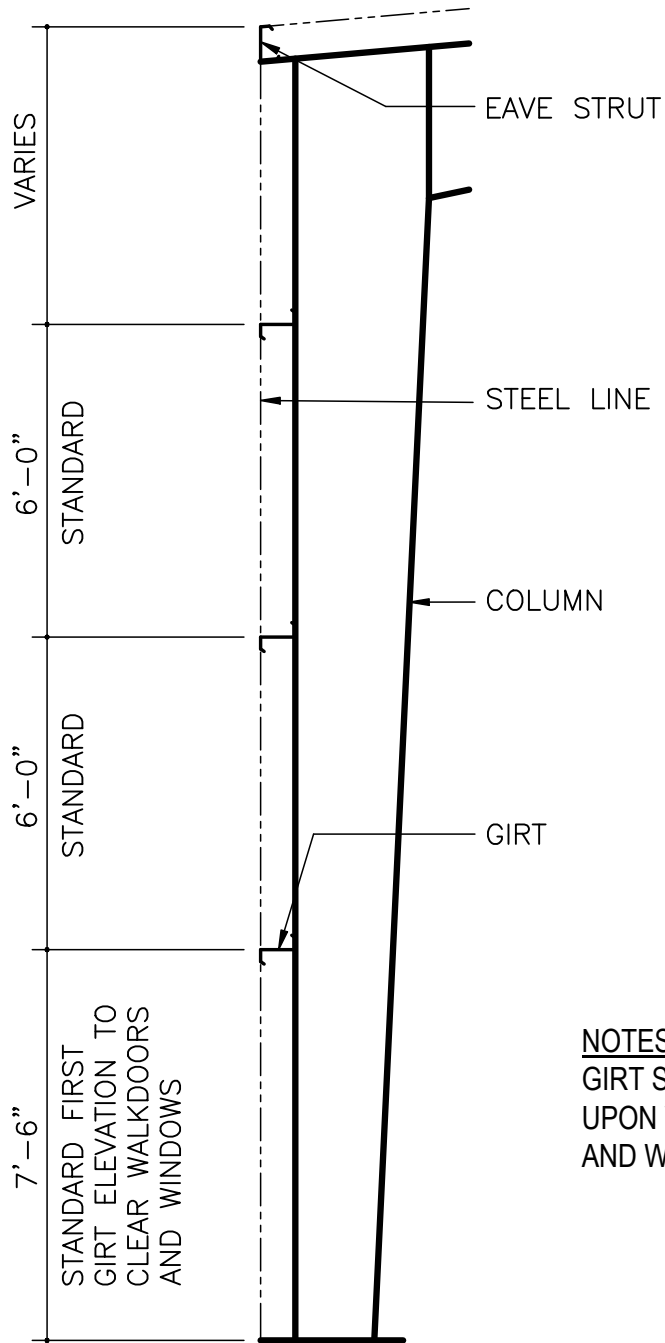
Typical purlin spacing



NOTES:

- * SPACING MAY VARY DEPENDING UPON WALL COVERING, APPLICATION, AND WIND SPEED.

Typical girt spacing



NOTES:
GIRT SPACING MAY VARY DEPENDING
UPON WALL COVERING, APPLICATION,
AND WIND SPEED.