



Maternal POWER
ANGUS BULL SALE

At the Ranch | Feb. 24, 2018, 3 p.m. | Fort Rice, N.D.



**AARON & SHEYNA
CASSIDY, COOPER & CLINT**



DIRECTIONS TO THE RANCH

From Cenex on Main Street in Mandan, take Highway 1806 South 27.5 miles. Turn West onto County Road 135. Go West about 4 miles. The road curves South. Continue South 3.5 miles. The ranch is on the West side of the road. Roads will be marked.

From Solen, go North on County Road 81 for 5 miles, then turn East onto County Road 134 for 7 miles.

Fellow cattlemen -

It is our pleasure to welcome you to our 2018 Strommen Ranch Maternal Power Angus Bull Sale. We are pleased with the potential and the quality of the yearling and two-year-old bulls in this sale. Each one is backed by generations of **MATERNAL POWER**.

From the beginning, we've been laser-focused on producing Angus cattle that prosper in a no-frills environment: moderate-framed, high-volume, easy fleshing cows with good feet, great udders and a quiet disposition. We expect our cows to re-breed quickly and wean a calf that is a high percentage of its dam's bodyweight, year after year. For the past 11 years, our cows have increased weaning weights, while consistently increasing the percentage of cows that re-breed in the first 21 days. In 2018, 100% of our cowherd will calve within a 40-day period. You won't find any lick tubs or creep feeders hidden behind the hills of our pastures. **Cattle that can do more with less - that's our definition of MATERNAL POWER!**

From the beginning, we've also been very particular about the sires we bring into the mix. We hate surprises. That's why we use a small group of proven, balanced-trait AI sires on our cows each year. We conduct a tremendous amount of research – evaluating the generations of genetics behind a bull, as well as his progeny – before we commit. We believe that a powerful, consistent cowherd can't be built with a "little-bit-of-this-little-bit-of-that" approach to sire selection. You must have a plan and a clear vision of what your ideal cow is.

We know what it is like to start from scratch – and how important it is to make cattle work for you, instead of the other way around. As your seedstock provider, we want your operations to be profitable and sustainable for generations – regardless of the market. We believe you can achieve this by developing your own herd of efficient, problem-free livestock backed by **Strommen Ranch MATERNAL POWER genetics**.

We are beyond excited to present this year's offering, which includes an impressive set of Sinclair Emulation XXP embryo transfer bulls that are sure to catch the eye of the most discriminating cattle producers. Our Resource sons are once again a powerful group that is unmatched in their bold rib shape and natural muscle pattern. The Capitalists are balanced-trait bulls to be used on cows or heifers with confidence.

We invite you to attend our 16th Annual Maternal Power Angus Bull Sale on Saturday, Feb. 24, 2018, at 3 p.m. at the ranch. The bulls will be penned in small groups outside the sale facility to make viewing and selection easier. Once the auction starts, a large screen will play a video of each bull as he sells. Videos are available at www.StrommenRanch.com.

Thank you to our repeat customers for your trust and confidence in our cattle. We invite new and returning customers to come take a look at this year's offering and the females behind them. We are committed to your success and will work to gain your trust, friendship and business. We take a tremendous amount of pride in our cattle and feel fortunate to be raising our family doing what we love most – being your source for Maternal Power Angus seedstock.

- Aaron & Sheyna Strommen





2018 ANGUS BULL SALE

AT THE RANCH • FEB 24, 2018 • 3 P.M.

SALE DAY PHONES

Aaron's Cell..... (701) 290-7983
Sheyna's Cell..... (701) 290-3886

SALE ORDER • We will follow consecutive sale book order.

TERMS AND CONDITIONS • All animals sell under the standard terms and conditions of the American Angus Association. Terms of the sale are cash. Full payment is due on sale day, unless prior arrangements have been made.

BASE PRICE • All bulls will have a minimum price of \$2,500 sale day. Bidding will begin at the base price.

BULL DEVELOPMENT • These bulls have been handled correctly and developed without ANY creep. They have been fed just enough to express genetic differences, but not overfed as to compromise soundness or longevity. We want you to have a bull that will do his job and last for years. We believe our 90-day breeding season guarantee, detailed below, is among the best in the industry.

DISCOUNTS • We will offer a \$50/head discount if you purchased a bull last year and a \$50/head discount for volume purchases of 2 or more head.

EPDS • EPDs are current as of Jan. 19, 2018.

SALE TIME & LUNCH • The sale starts at 3 p.m. CST. Please join us for lunch beginning at 1 p.m. and remain with us after the sale for fellowship and refreshments.

SALE STAFF

Kyle Shobe, Auctioneer..... (406) 366-0472
Dennis Ginkens (406) 670-9839
Scott Ressler..... (701) 391-7310

FEEDING & DELIVERY • We will keep all bulls free of charge until delivery. Deliveries start May 1st. We ask that you work with us so that we can get bulls delivered in the most efficient manner. We will offer free delivery within 500 miles of the ranch.

HEALTH • All bulls have been on a complete health program as prescribed by Dr. Pat Bierman of the Mandan Vet Clinic, Mandan, N.D. Bulls have been given a vaccination for foot rot and will be boosted when they are fertility tested.

FERTILITY • All bulls will pass a fertility exam performed by Dr. Bierman before delivery.

SIGHT UNSEEN PURCHASES • If you, for some reason, are unable to attend the sale, but wish to place a bid, feel free to call us and we will handle your bid as if you were here. If you wish to be on the phone during the sale, we will try to accommodate your request. Please let us know in advance so arrangements can be made. All sight unseen purchases are fully guaranteed.

LIABILITY • Anyone attending this sale does so at their own risk. Neither the owners nor anyone connected to this sale, assumes any liability, legal or otherwise.

SIRE GROUPS • For our customers who are looking to put together a set of closely related herd sires, we are offering many 1/2, 3/4 and full brothers. Groups are highlighted in the footnotes.

GUARANTEE • Strommen Ranch is very confident that we have developed these bulls safely. They have been fed just enough to express genetic differences, but not overfed as to compromise soundness or longevity. **We want you to have a bull that will do his job and last for years.** It is important to us that these bulls not only perform from birth to yearling, but from birth through breeding. It is with this confidence in our bulls that we can give our full 90-day breeding season guarantee. We understand that these are animals and that injuries do occur, but we have the utmost confidence that we have developed these bulls in the best way to protect your investment. If an injury or death occurs, Strommen Ranch will guarantee them for the purchase price minus salvage value, or we will provide a replacement bull, if a suitable bull is available.

We don't make you take out an insurance policy and add that to the purchase price. We don't have a formula to take away half of the value of the bull if injury occurs. If the bull happens to get injured, or you are unsatisfied with your purchase for any reason, we want to know so we can take care of the issue in a timely manner. At the same time, we expect you to care for your investment in your Strommen Ranch bull, so that if a problem does occur, the most appropriate and timely care is taken. All claims must be made by Sept. 15, 2018. **We are committed to our customers and your success.**

Videos of the bulls are available on our website

www.StrommenRanch.com

Catalog, print advertisements and website designed by **Strommen Livestock Services** • Fort Rice, N.D. • (701) 445-2020 • (701) 290-3886



INTERNATIONAL GUESTS TOUR STROMMEN RANCH

On June 27 and 28, we had the distinct privilege of again hosting international guests from Argentina, Brazil and Columbia. Thank you to all who came and toured our ranch and to Genex Beef for facilitating the tour.



Santiago Debernardi (right) of Juan Debernardi, SRL, a leading beef genetics company in South America, translates as Aaron answers questions about the Strommen Ranch Angus cowherd.



Clint celebrated his birthday with our international guests, who sang "Happy Birthday" and gave him a traditional gaucho beret worn by the most distinguished cowboys and cattlemen in their countries.



Codi Vallery-Mills (left), editor of Cattle Business Weekly interviewed guests and Aaron and Sheyna, who were selected by the paper as two of the Beef Industry's Top 10 Leaders Under 40 in 2017.



We enjoy meeting new friends from around the world and hope to one day visit their ranches.



Shawna Olson of AGWEEK TV interviews Aaron and representatives of the tour.





We evaluated XXP's progeny for several years before deciding to incorporate this 11-year-old sire into our herd. We did so now because of his ability to sire length of body and muscle along with adding marbling in an attractive and docile package. We've made a tremendous financial investment in using XXP, as semen is \$100 per straw.

The bulls are remarkably long and deep with an abundance of muscle, along with being docile. We are most excited about the mark his daughters will make in our herd. They are super attractive and feminine-made with depth-of-rib and an easy-fleshing, maternal look. The XXP daughters we have seen were all near-perfectly uddered. We were tentative about using a double-bred EXT, but have been well satisfied with the docility of his progeny.

REFERENCE
SIRE

SINCLAIR EMULATION XXP

BD: 3/3/2006

Reg #: 15355048

#Emulation N Bar 5522
#N Bar Emulation EXT
N Bar Primrose 2424

#N Bar Emulation EXT
#N Bar Primrose Y3051
#N Bar Primrose 2429

#Emulation 31
Ankony 8F78 Lass 8F275
#Emulation 31
Primrose N Bar 9962
#Emulation N Bar 5522
N Bar Primrose 2424
#Nichols Trademark S1
Primrose N Bar 9962

CE	BW	WW	YW	Milk
2	1.3	57	102	10

XXP cattle excel in commercially important traits like calf survivability, fertility in a practical environment and they offer superior mothering ability. Of special note is the longevity of his dam – a cow that remained productive into her late teens.



Lot 1 • S R Emulation XXP 7122



Lot 9 • S R Emulation XXP 790



Lot 21 • S R Emulation XXP 7126



Lot 5 • S R Emulation XXP 7112



Lot 12 • S R Emulation XXP 7115



Lot 13 • S R Emulation XXP 7104



Lot 3 • S R Emulation XXP 7121



Lot 11 • S R Emulation XXP 773



Lot 4 • S R Emulation XXP 7134



*Lot 6
S R Resource
785*



*Lot 51
S R Resource
635*

REFERENCE
SIRE

SAV RESOURCE 1441

BD: 1/7/2011

Reg #: 17016597

#R R Rito 707
Rito 707 of Ideal 3407 7075
Ideal 3407 of 1418 076

#S A V 8180 Traveler 004
S A V Blackcap May 4136
#S A V May 2397

Rito N Bar
Eriskay of Rollin Rock 3
#Ideal 1418 of 8103 4286
Ideal 076 of 692 8375
#Sitz Traveler 8180
Boyd Forever Lady 8003
#S A F 598 Bando 5175
S A V May 7238

CE	BW	WW	YW	Milk
-1	4.2	70	133	19

We continue to be impressed with this son of Rito 7075. Resource is a moderate-framed bull that is tremendously long, thick and stout, with as much Angus breed-character as you can put in one. He brings to the pasture the basics of efficiency and real-world fleshing ability with muscle, masculinity and superior feet quality.

Resource's dam records a progeny weaning ratio (WR) of 4/111 and has generated \$5.6 million in direct progeny sales. His daughters are coming into production here and they are consistent in their phenotype and their fleshing ability, udder quality and feet. These cattle fit our ideals and philosophy on efficient, grass-based cattle production.



*Lot 19
S R Capitalist
715*



*Lot 51
S R Capitalist
6139*

REFERENCE
SIRE

CONNEALY CAPITALIST 028

#Sitz Traveler 8180
#SAV Final Answer 0035
SAV Emulous 8145

#CRA Bextor 872 5205 608
Prides Pita of Conanga 8821
Prides Trav of Conanga 6499

#GDAR Traveler 71
Sitz Everelda Entense 1137
#Bon View Bando 598
SAV Sky Emulous 2124
#BAR Ext Traveler 205
CRA Lady Jaye 608 498 S Easy
Traveler of Conanga
#Pretty Pet of Conanga

CE	BW	WW	YW	Milk
12	.2	58	100	21

Capitalist is a high-ranking member of the Select Sires A.I. stud and consistently ranks in the top 25 annually for registrations. This balanced-trait and calving-ease bull left us with large-scrotaled, deep, easy-fleshing, very moderate-framed bulls in an attractive, masculine package. His daughters will be a tremendous set, as they are very broody in their appearance and look to be the Strommen Ranch kind!



LOT 1 ~ S R EMULATION XXP 7122



LOT 1 ~ S R EMULATION XXP 7122

Flush Brothers

LOT 1 S R EMULATION XXP 7122

BD: 3/19/2017

Reg #: 18969435

CE	BW	WW	YW	Milk	Dam's Production	BW	ADJ 205
6	0.8	56	94	18	4/116	93	853
						WWR	ET

LOT 2 S R EMULATION XXP 797

BD: 3/16/2017

Reg #: 18969424

#N Bar Emulation EXT
Sinclair Emulation XXP
 #N Bar Primrose Y3051

#O C C Paxton 730P
#S R Bonnie Belle 104
 #S R Bonnie Belle 980

#Emulation N Bar 5522
 N Bar Primrose 2424
 #N Bar Emulation EXT
 #N Bar Primrose 2429
 O C C Focus 813F
 O C C Blackbird 736K
 S R Canyon 712
 MH Bonnie Belle 945

BW	ADJ 205
89	798
WWR	ET

CE	BW	WW	YW	Milk	Dam's Production
6	0.8	56	94	18	4/116

We start the sale this year with two flush brothers by the maternal and performance sire XXP. These bulls represent what we are trying to do in our breeding program. They will throw down pounds on the scale and leave a maternal legacy with their daughters. Their incredibly capacious and wide-bodied Pathfinder dam posts a progeny BR of 4/97 and a progeny WR of 4/116. She has been the mother to many top sellers here and continues to leave her mark. She is the dam to the lead-off and top selling bull of the 2016 sale, selected by Kellen Unruh of N.D., and the top two high sellers in the 2017, sale selected by Cleveland Creek Land & Cattle of Mont., and John Lord of N.D. Other sons are working for John Knudson and Emmett Diede, both of N.D. **3/4 Brothers to Lots 3, 4, 5, 10, 11, 12, 13 and 27.**



LOT 3 ~ S R EMULATION XXP 7121

Flush Brothers

LOT 3 S R EMULATION XXP 7121

BD: 3/19/2017

Reg #: 18969434

CE	BW	WW	YW	Milk	Dam's Production	ADJ 205	BW
6	0.1	50	84	20	4/118	WWR	81

LOT 4 S R EMULATION XXP 7134

BD: 3/22/2017

Reg #: 18969439

CE	BW	WW	YW	Milk	Dam's Production	ADJ 205	BW
6	0.1	50	84	20	4/118	WWR	88

LOT 5 S R EMULATION XXP 7112

BD: 3/19/2017

Reg #: 18969431

#N Bar Emulation EXT
Sinclair Emulation XXP
#N Bar Primrose Y3051

#O C C Paxton 730P
S R Lady Blue 118
#S R Lady Blue 631

#Emulation N Bar 5522
N Bar Primrose 2424
#N Bar Emulation EXT
#N Bar Primrose 2429
O C C Focus 813F
O C C Blackbird 736K
Oak Hollow 7709 of 1318 1118
Farview Lady Blue 2228

BW	95
ADJ 205	763
WWR	ET

CE	BW	WW	YW	Milk	Dam's Production
6	0.1	50	84	20	4/118

One of the best flushes in the history of our program. These flush brothers are deep-middled, extremely long-spined and have the genetic tabulation to make some of the best females to walk. Their donor dam has a progeny BR of 4/97 with an average actual birth weight of 78 and a progeny WR of 4/118 and she maintained a perfect 365-day calving interval before she entered into embryo production. Their Pathfinder maternal granddam stuck to her AI service every year and has a progeny WR of 7/106. Maternal brothers are working for Cleveland Creek Land & Cattle of Mont., and Casey Joens of S.D. These bulls will leave a profitable and lasting impact on your cowherd. **Flush Brothers to Lots 11, 12 and 13. 3/4 Brothers to Lots 1, 2, 10 and 27.**



LOT 3 ~ S R EMULATION XXP 7121



LOT 4 ~ S R EMULATION XXP 7134



LOT 5 ~ S R EMULATION XXP 7112

*“Every decision we make is based on our customers. If our customers don’t benefit from our decisions, we won’t benefit from our decisions. By taking a BALANCED APPROACH to GENETIC IMPROVEMENT, we hope to **manage our risk and help you manage yours.**”*



LOT 6 ~ S R RESOURCE 785



S R Polly 804, donor dam of Lots 6-7.

Flush Brothers

LOT 6

S R RESOURCE 785

BD: 3/15/2017

Reg #: 18969420

BW 96

CE	BW	WW	YW	Milk	Dam's Production	ADJ 205
2	3.1	58	105	25	6/113	839

WWR ET

LOT 7

S R RESOURCE 760

BD: 3/13/2017

Reg #: 18969411

BW 86

ADJ 205 709

WWR ET

Rito 707 of Ideal 3407 7075
S A V Resource 1441
 S A V Blackcap May 4136

#R R Rito 707
 Ideal 3407 of 1418 076
 #S A V 8180 Traveler 004
 #S A V May 2397
 #Sitz Traveler 8180
 #Sitz Barbaramere Jet 2698
 #O C C Emblazon 854E
 #M H Polly 817

#Sitz Alliance 6595
S R Polly 804
 #SR Polly 323

CE	BW	WW	YW	Milk	Dam's Production
2	3.1	58	105	25	6/113



LOT 7 ~ S R RESOURCE 760



Cody Staiger of N.D., owns S R Resource 559, a full brother to Lots 6 and 7.

The combination of SAV Resource 1441 and S R Polly 804 has been a great one. The bulls offer scale-smashing performance. They are massive, yet easy-fleshing and have the potential to sire some of the best feeder calves to hit the market. To top it off, their daughters are made for long-term profitability. S R Resource 685 is certainly one of the top bulls to ever come from Polly 804 and I am certain the cowboys will find him. Flush brothers have sold to Pine Coulee Angus and Gene Ryg, both of Mont., as well as Cody Staiger, Roger Harstad and Jason Erickson, all of N.D. Maternal brothers are working for K & L Ranch, Ray Tescher, Ted Tescher and Glenn & Vicki Gullickson, all of N.D., and Dan Price, Dana Sippel and Tom Miller, all of S.D.



LOT 8 ~ S R RESOURCE 7120

LOT 8

S R RESOURCE 7120

BD: 3/19/2017

Reg #: 18969433

Rito 707 of Ideal 3407 7075
S A V Resource 1441
 S A V Blackcap May 4136

#O C C Paxton 730P
#S R Bonnie Belle 104
 #S R Bonnie Belle 980

#R R Rito 707
 Ideal 3407 of 1418 076
 #S A V 8180 Traveler 004
 #S A V May 2397
 O C C Focus 813F
 O C C Blackbird 736K
 S R Canyon 712
 MH Bonnie Belle 945

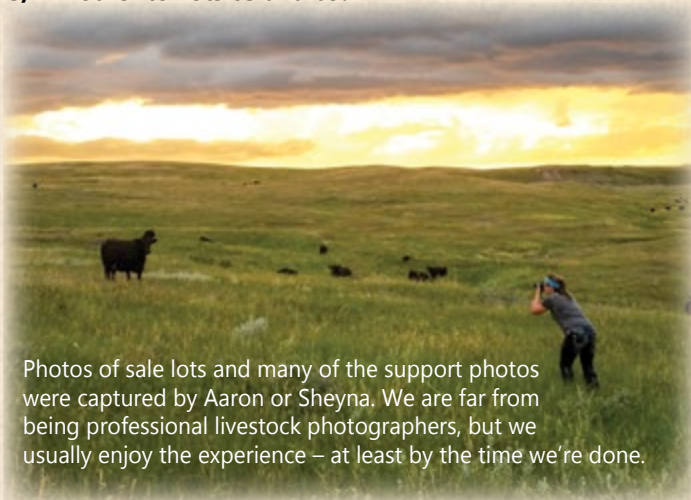
BW	98
ADJ 205	823
WWR	ET

CE	BW	WW	YW	Milk	Dam's Production
4	2.2	63	109	22	4/116

It's the magic formula putting the performance legend Resource with one of the top females to ever walk the ranch, S R Bonnie Belle 104. 7120 shows extreme length, depth and Angus breed character and his full sisters hit the mark for maternal function. His tremendous Pathfinder donor dam gives us some of the top performance bulls for this sale every year but also expresses her maternal potency through her daughters we have in production. **3/4 Brother to Lots 65 and 69.**



Lot 8's flush brother, S R Resource 669, is working for Cleveland Creek Land & Cattle of Mont.



Photos of sale lots and many of the support photos were captured by Aaron or Sheyna. We are far from being professional livestock photographers, but we usually enjoy the experience – at least by the time we're done.



Kellen Unruh of N.D., purchased S R Resource 6101, a full brother to Lot 8, in our 2017 sale.



LOT 9 ~ S R EMULATION XXP 790

LOT 9

S R EMULATION XXP 790

BD: 3/16/2017

Reg #: 18969400

#N Bar Emulation EXT
Sinclair Emulation XXP
#N Bar Primrose Y3051

S A V Resource 1441
S R Sky Tee Lass 431
S R Sky Tee Lass 159

#Emulation N Bar 5522
N Bar Primrose 2424
#N Bar Emulation EXT
#N Bar Primrose 2429
Rito 707 of Ideal 3407 7075
S A V Blackcap May 4136
#O C C Paxton 730P
S R Sky Tee Lass 955

BW	98
ADJ 205	822
WWR	118

CE	BW	WW	YW	Milk	Dam's Production
-1	3.5	68	120	17	2/109

Here we have one of the most attractive, wide-based, massive individuals in the sale. He also takes home the award for the highest weaning and yearling EPD of the 2017 calf crop. His beautifully uddered dam scores a 9 for udder, a 9 for disposition and she weaned off a high percentage of her body weight. His granddam stuck to AI service every year. The cowboys will find this bull. Don't miss out. **3/4 Brother to Lots 23 and 25.**



O C C Paxton 730P is the maternal great grandsire of Lot 9 and the maternal grandsire of Lots 10, 11, 12 and 13.



LOT 10 ~ S R EMULATION XXP 730

LOT 10

S R EMULATION XXP 730

BD: 3/8/2017

Reg #: 18969388

#N Bar Emulation EXT
Sinclair Emulation XXP
#N Bar Primrose Y3051

#O C C Paxton 730P
S R Lady Barbara 3103
S R Lady Barbara 049

#Emulation N Bar 5522
N Bar Primrose 2424
#N Bar Emulation EXT
#N Bar Primrose 2429
O C C Focus 813F
O C C Blackbird 736K
#Sitz Alliance 6595
MH Lady Barbara 2101

BW	82
ADJ 205	705
WWR	101

CE	BW	WW	YW	Milk	Dam's Production
8	0.1	49	85	14	3/93

Cattle that excel in the convenience traits are cattle that support the bottom line. 730 has a pedigree loaded with common sense genetics for generations. XXP, Paxton, Alliance and Emblazon are all proven sires that support our vision of "Maternal Power." His dam 3103 has stuck AI every year and is due again first cycle to XXP with a heifer calf. Use this bull as the cornerstone to build a tremendous set of females that can excel in any environment. **3/4 Brother to Lots 1, 2, 3, 4, 5, 11, 12, 13 and 27.**



LOT 11 ~ S R EMULATION XXP 773

Flush Brothers

LOT 11 S R EMULATION XXP 773

BD: 3/14/2017

Reg #: 18969413

BW 79

CE	BW	WW	YW	Milk	Dam's Production	ADJ 205
6	0.1	50	84	20	4/118	830

WWR ET

LOT 12 S R EMULATION XXP 7115

BD: 3/19/2017

Reg #: 18969432

BW 87

CE	BW	WW	YW	Milk	Dam's Production	ADJ 205
6	0.1	50	84	20	4/118	801

WWR ET

LOT 13 S R EMULATION XXP 7104

BD: 3/17/2017

Reg #: 18969428

#N Bar Emulation EXT
Sinclair Emulation XXP
#N Bar Primrose Y3051

#O C C Paxton 730P
S R Lady Blue 118
#S R Lady Blue 631

#Emulation N Bar 5522
N Bar Primrose 2424
#N Bar Emulation EXT
#N Bar Primrose 2429
O C C Focus 813F
O C C Blackbird 736K
Oak Hollow 7709 of 1318 1118
Farview Lady Blue 2228

BW	91
ADJ 205	808
WWR	ET

CE	BW	WW	YW	Milk	Dam's Production
6	0.1	50	84	20	4/118

One of the best flushes in the history of our program! These brothers are deep-middled, extremely long-spined and have the genetic tabulation to make some of the best females to walk. Their donor dam has a progeny BR of 4/97 with an average actual birth weight of 78, a progeny WR of 4/118 and she maintained a perfect 365-day calving interval before she entered into embryo production. Their Pathfinder maternal granddam stuck to her AI service every year and has a progeny WR of 7/106. Maternal brothers are working for Cleveland Creek Land & Cattle of Mont., and Casey Joens of S.D. These bulls will leave a profitable and lasting impact on your cowherd. **Flush Brothers to Lots 3, 4, 5, 3/4 Brothers to Lots 1, 2, 10 and 27.**



LOT 12 ~ S R EMULATION XXP 7115



LOT 13 ~ S R EMULATION XXP 7104



LOT 14 ~ S R CAPITALIST 718

LOT 14 S R CAPITALIST 718

BD: 3/7/2017

Reg #: 18969384

#S A V Final Answer 0035
Connealy Capitalist 028
Prides Pita of Conanga 8821

#Connealy Thunder
S R O Lass 582
S R O Lass 306

#Sitz Traveler 8180
S A V Emulous 8145
#C R A Bextor 872 5205 608
Prides Trav of Conanga 6499
#Baldridge Kaboom K243 KCF
#Parka of Conanga 241
#O C C Paxton 730P
#S R O Lass 705

BW	79
ADJ 205	798
WWR	114

CE	BW	WW	YW	Milk	Dam's Production
8	1.1	61	102	23	1/114

Recommended for use on heifers. Here is the first of the Capitalist calving ease bulls that were so popular in last years' sale. His maternally stacked pedigree reads Capitalist, Thunder, Paxton and Bushwacker. His Pathfinder great granddam has a progeny WR of 8/103. The O Lass cow family has been an invaluable genetic contributor to our herd. His dam scored an 8 for udder and an 8 for disposition. **3/4 Brother to Lots 15, 16, 34, 35, 52, 53, 62, 63, 70 and 74.**



Lot 16's granddam, S R Blackcap 002.

LOT 15 S R CAPITALIST 743

BD: 3/10/2017

Reg #: 18971465

#S A V Final Answer 0035
Connealy Capitalist 028
Prides Pita of Conanga 8821

#Connealy Thunder
S R Betty 5101
S R Betty 3212

#Sitz Traveler 8180
S A V Emulous 8145
#C R A Bextor 872 5205 608
Prides Trav of Conanga 6499
#Baldridge Kaboom K243 KCF
#Parka of Conanga 241
#O C C Great Plains 943G
M H Betty 916

BW	72
ADJ 205	714
WWR	102

CE	BW	WW	YW	Milk	Dam's Production
12	-0.8	47	83	23	1/102

Recommended for use on heifers. Another Capitalist X Thunder. Line these bulls up for guaranteed calving ease and females that will make a lasting impact on your herd. **3/4 Brother to Lots 14, 16, 34, 35, 52, 53, 62, 63, 70 and 74.**

LOT 16 S R CAPITALIST 735

BD: 3/9/2017

Reg #: 18969389

#S A V Final Answer 0035
Connealy Capitalist 028
Prides Pita of Conanga 8821

#Connealy Thunder
S R Blackcap 318
#S R Blackcap 002

#Sitz Traveler 8180
S A V Emulous 8145
#C R A Bextor 872 5205 608
Prides Trav of Conanga 6499
#Baldridge Kaboom K243 KCF
#Parka of Conanga 241
#21AR Outfitter 6032
S R Blackcap 509

BW	82
ADJ 205	737
WWR	106

CE	BW	WW	YW	Milk	Dam's Production
10	-0.6	54	95	23	3/103

Recommended for use on heifers. These Capitalist calving-ease bulls have volume and thickness and will provide you with calves that hit the ground with vigor and survival instinct. 735's Pathfinder granddam stuck AI every year of her life and had a progeny WR of 4/106 and his great granddam had a progeny WR of 10/104 with a 367-day calving interval. **3/4 Brother to Lots 14, 15, 34, 35, 52, 53, 62, 63, 70 and 74.**

LOT 17 S R CAPITALIST 713

BD: 3/5/2017

Reg #: 18969381

#S A V Final Answer 0035
Connealy Capitalist 028
Prides Pita of Conanga 8821

Ox Bow Revival 1313

S R Lucy 508

S R Lucy 346

#Sitz Traveler 8180
S A V Emulous 8145
#C R A Bextor 872 5205 608
Prides Trav of Conanga 6499
#Sitz Dash 10277
Ox Bow Manor 933
#GDAR Game Day 449
S R Lucy 106

BW	69
ADJ 205	702
WWR	101

CE	BW	WW	YW	Milk	Dam's Production
15	-1.4	51	89	21	1/101

Recommended for use on heifers. True-blue, sleep-all-night, heifer bull! 713 is stacked with 10 generations of proven, female-makers and 4 generations of calving ease. Capitalist, Revival, Game Day, Paxton, Bushwacker, EXT, Rito 2100, Power Play, Shearbrook Shoshone and Rito 149. His dam, S R Lucy 508, stuck AI first cycle. His productive granddam, S R Lucy 346, has stuck to AI service every year and has a progeny WR of 3/102. **3/4 Brother to Lots 54, 55, 64 and 71.**



M H Beauty 723 • Maternal granddam of Lots 18-19.



V D A R Beauty 50 • Maternal great granddam of Lots 18-19.



*O C C Juanada 775C • Maternal granddam of Lot 20.
Maternal sister to O C C Anchor.*

LOT 18 S R CAPITALIST 719

BD: 3/7/2017

Reg #: 18969385

#S A V Final Answer 0035
Connealy Capitalist 028
Prides Pita of Conanga 8821

#N Bar Emulation EXT

S R Beauty 3215

M H Beauty 723

#Sitz Traveler 8180
S A V Emulous 8145
#C R A Bextor 872 5205 608
Prides Trav of Conanga 6499
#Emulation N Bar 5522
N Bar Primrose 2424
#D H D Traveler 6807
V D A R Beauty 50

BW	71
ADJ 205	741
WWR	106

CE	BW	WW	YW	Milk	Dam's Production
13	-1.5	47	79	23	3/106

Recommended for use on heifers. 719 is a larger outlined Capitalist son that is surely going to be an udder improver with 3 generations of sires that had daughters with near perfect udder quality. His beautiful EXT dam stuck AI every year and carries a 366-day calving interval. If you are looking for a bit more size and scale, this is certainly a candidate to put your eye on. **Full brother in blood to Lot 19.**

LOT 19 S R CAPITALIST 7156

BD: 3/30/2017

Reg #: 18971488

#S A V Final Answer 0035
Connealy Capitalist 028
Prides Pita of Conanga 8821

#N Bar Emulation EXT

S R Beauty 3218

M H Beauty 723

#Sitz Traveler 8180
S A V Emulous 8145
#C R A Bextor 872 5205 608
Prides Trav of Conanga 6499
#Emulation N Bar 5522
N Bar Primrose 2424
#D H D Traveler 6807
V D A R Beauty 50

BW	102
ADJ 205	794
WWR	114

CE	BW	WW	YW	Milk	Dam's Production
1	3.7	56	96	23	2/110

Here is a full brother in blood to Lot 18 that is a bit younger but definitely performed with the best of them. Coming in with an adjusted weaning weight near 800 lbs., this is the top-performing Capitalist son in the sale. If you are looking for a bull to add pay-weight, yet leave a set of females that will be profitable for the long term, check him out. **Full brother in blood to Lot 18.**

LOT 20 S R CAPITALIST 7117

BD: 3/19/2017

Reg #: 18971503

#S A V Final Answer 0035
Connealy Capitalist 028
Prides Pita of Conanga 8821

#S A V Net Worth 4200

Champion Hill Juanada 6188

O C C Juanada 775C

#Sitz Traveler 8180
S A V Emulous 8145
#C R A Bextor 872 5205 608
Prides Trav of Conanga 6499
#S A V 8180 Traveler 004
S A V May 2410
#N Bar Emulation EXT
O C C Juanada 709V

BW	91
ADJ 205	749
WWR	ET

CE	BW	WW	YW	Milk	Dam's Production
7	1.6	50	86	24	N/A

The Juanada cow family is a time-tested, proven line that is well known for their longevity, superior fleshing ability and phenotypic excellence. This Capitalist son has a great look, muscle shape and body length and a generational pedigree that is among the best in the breed. His granddam, OCC Juanada 775C, was the high selling cow of the Ohlde Cattle Company dispersal sale in 1994. A bit more up-headed than the rest, but shouldn't be a problem and is certainly guaranteed if there would ever be an issue. EPDs are estimated based on parent average.



LOT 21 ~ S R EMULATION XXP 7126



*S R Polly 804, donor dam of
Lots 6-7 and 21-22.*

Flush Brothers

LOT 21 S R EMULATION XXP 7126

BD: 3/20/2017

Reg #: 18969437

BW 93

CE	BW	WW	YW	Milk	Dam's Production	ADJ 205	ET
4	1.7	51	90	21	6/113	WWR	ET

LOT 22 S R EMULATION XXP 754

BD: 3/12/2017

Reg #: 18969410

BW 79

ADJ 205 838

WWR ET

#N Bar Emulation EXT
Sinclair Emulation XXP
#N Bar Primrose Y3051

#Sitz Alliance 6595
S R Polly 804
#SR Polly 323

#Emulation N Bar 5522
N Bar Primrose 2424
#N Bar Emulation EXT
#N Bar Primrose 2429
#Sitz Traveler 8180
#Sitz Barbaramere Jet 2698
#O C C Emblazon 854E
#M H Polly 817

CE	BW	WW	YW	Milk	Dam's Production
4	1.7	51	90	21	6/113

These flush brothers by XXP are out of the top income earning cow on the ranch. They should be a real genetic tool to add to your herd. We have had 44 calves out of S R Polly 804 here and every female has been retained and put into production. She is a cornerstone female in our program. The combination of S R Polly 804 and XXP will give you cattle with fertility, fleshing ability and body mass, length, udder quality and maternal efficiency.



*Pine Coulee Angus, Mont., owns S R Gulch 441, a maternal brother
to Lots 21 and 22.*



*K & L Ranch owns S R Right Time 696, a maternal brother
to Lots 21 and 22.*





Lot 24 is offered for sale by the Strommen kids,
(L to R) Cooper, Clint and Cassidy.

LOT 24 S R EMULATION XXP 786

BD: 3/16/2017

Reg #: 18969399

#N Bar Emulation EXT
Sinclair Emulation XXP
#N Bar Primrose Y3051

#GDAR Game Day 449
S R Lucy 268
S R Lucy 963

#Emulation N Bar 5522
N Bar Primrose 2424
#N Bar Emulation EXT
#N Bar Primrose 2429
#Boyd New Day 8005
#G D A R Miss Wix 474
#Sitz Alliance 6595
M H Lucy 761

BW	90
ADJ 205	689
WWR	99

CE	BW	WW	YW	Milk	Dam's Production
3	1.5	48	89	16	4/99

786's great granddam, Lucy 761, was one of the foundation cows we bought from Monte Howrey when we first got started. The Lucy's have had an incredible impact on our herd and continue to do so. This calf is owned by our kids Cassidy, Cooper and Clint and they seem to keep getting bull calves! Lucy 268 is a really nice made female that scores a 9 for udder quality and a 9 for disposition.

LOT 26 S R EMULATION XXP 7167

BD: 4/1/2017

Reg #: 18969405

#N Bar Emulation EXT
Sinclair Emulation XXP
#N Bar Primrose Y3051

Ox Bow Revival 1313
S R Beauty 490
S R Beauty 235

#Emulation N Bar 5522
N Bar Primrose 2424
#N Bar Emulation EXT
#N Bar Primrose 2429
#Sitz Dash 10277
Ox Bow Manor 933
#L T Bandwagon 3105
S R Beauty 617

BW	96
ADJ 205	732
WWR	105

CE	BW	WW	YW	Milk	Dam's Production
0	3.3	60	104	19	1/105

These XXP calves performed higher than we expected them to. We used him for his superior female making ability and we were pleasantly surprised with the amount of performance we got, mainly due to the added length of body. 7167's dam is a beautifully constructed female that scored a 9 for udder and a 10 for disposition.

LOT 23 S R EMULATION XXP 721

BD: 3/7/2017

Reg #: 18969386

#N Bar Emulation EXT
Sinclair Emulation XXP
#N Bar Primrose Y3051

S A V Resource 1441
S R Bonnie Belle 408
#S R Bonnie Belle 104

#Emulation N Bar 5522
N Bar Primrose 2424
#N Bar Emulation EXT
#N Bar Primrose 2429
Rito 707 of Ideal 3407 7075
S A V Blackcap May 4136
#O C C Paxton 730P
#S R Bonnie Belle 980

BW	78
ADJ 205	688
WWR	99

CE	BW	WW	YW	Milk	Dam's Production
8	0	57	100	16	2/100

Recommended for use on heifers. This bull defines moderate-framed, grass-based beef production. This bull has as much width and dimension of any XXP son in the sale. He is likely the best bull to produce those moderate-framed females that can go out and work in the toughest of environments. His Resource dam is near perfect-uddered, scoring a 9 and has a super disposition also scoring a 9. She has a BR of 2/90 and an average birth weight of 70 lbs. **3/4 Brother to Lots 9 and 25.**

LOT 25 S R EMULATION XXP 7171

BD: 4/3/2017

Reg #: 18969406

#N Bar Emulation EXT
Sinclair Emulation XXP
#N Bar Primrose Y3051

S A V Resource 1441
S R Miss Wix 493
Miss Wix of Circle V

#Emulation N Bar 5522
N Bar Primrose 2424
#N Bar Emulation EXT
#N Bar Primrose 2429
Rito 707 of Ideal 3407 7075
S A V Blackcap May 4136
S R Alliance 904
Miss Wix 6133 of Mc Cumber

BW	98
ADJ 205	772
WWR	111

CE	BW	WW	YW	Milk	Dam's Production
-2	3.9	60	110	17	1/111

This is the youngest XXP in the sale and he didn't disappoint with his performance. With an adjusted 205-day weight of 772 lbs., and a WR of 111, he is one of the top-performing XXP natural calves. **3/4 Brother to Lots 9 and 23.**

LOT 27 S R EMULATION XXP 746

BD: 3/11/2017

Reg #: 18969391

#N Bar Emulation EXT
Sinclair Emulation XXP
#N Bar Primrose Y3051

#O C C Paxton 730P
S R Lady Blue 323
#S R Lady Blue 631

#Emulation N Bar 5522
N Bar Primrose 2424
#N Bar Emulation EXT
#N Bar Primrose 2429
O C C Focus 813F
O C C Blackbird 736K
Oak Hollow 7709 of 1318 1118
Farview Lady Blue 2228

BW	85
ADJ 205	743
WWR	107

CE	BW	WW	YW	Milk	Dam's Production
7	-0.3	53	90	16	3/101

Lot 27 stems from our Lady Blue cow family, which excel for fertility, fleshing ability and udder quality. There is no doubt 746, who had an adjusted 205-day wt of 743 lbs., will sire feeder calves with extra payweight and leave replacement heifers that will drive profitability to new levels. Look to Lot 27 for 5 generations of powerful, easy-fleshing, maternal genetics that excel at the convenience traits that make cattlemen profitable. **3/4 Brother to Lots 1, 2, 3, 4, 5, 10, 11, 12 and 13.**

"As input costs continue to rise, profitability in the beef business will be driven by cowherds that have the genetics to do more with less."



LOT 28 ~ S R RESOURCE 775

LOT 28 S R RESOURCE 775

BD: 3/14/2017

Reg #: 18969398

Rito 707 of Ideal 3407 7075
S A V Resource 1441
 S A V Blackcap May 4136

#GDAR Game Day 449
S R Polly 341
 S R Polly 804

#R R Rito 707
 Ideal 3407 of 1418 076
 #S A V 8180 Traveler 004
 #S A V May 2397
 #Boyd New Day 8005
 #G D A R Miss Wix 474
 #Sitz Alliance 6595
 #SR Polly 323

BW	79
ADJ 205	773
WWR	111

CE	BW	WW	YW	Milk	Dam's Production
7	1.1	62	111	22	3/101

This is a stud! We have liked this calf all summer and he is still one of the top calves in the pen. This massive-middled, deep-bodied tank shows an expressive hind quarter a strong top and looks the way a bull should look. His dam is a gentle, long-bodied Game Day daughter that is near perfect uddered, scoring a 9 and very mild disposition, also scoring a 9. You can't miss this guy – he is a beef machine! **3/4 Brother to Lots 29 and 30.**

LOT 29 S R RESOURCE 7113

BD: 3/19/2017

Reg #: 18969401

Rito 707 of Ideal 3407 7075
S A V Resource 1441
 S A V Blackcap May 4136

#GDAR Game Day 449
S R Miss Wix 367
 Miss Wix 110 of Circle V

#R R Rito 707
 Ideal 3407 of 1418 076
 #S A V 8180 Traveler 004
 #S A V May 2397
 #Boyd New Day 8005
 #G D A R Miss Wix 474
 S R Alliance 904
 Miss Wix 6134 of Mc Cumber

BW	81
ADJ 205	733
WWR	105

CE	BW	WW	YW	Milk	Dam's Production
5	1.6	56	103	21	3/100

This 3/4 brother to Lots 28 and 30 is out of a very fertile dam that weaned off a very high percentage of her body weight and has stuck to her AI service every year. The Resource daughters we have in production fit our ideals for grass-based beef production. They are fertile, easy-fleshing, have a strong phenotype and are great mothers with above-average udders and good feet. **3/4 Brother to Lots 28 and 30.**

LOT 30 S R RESOURCE 747

BD: 3/11/2017

Reg #: 18969392

Rito 707 of Ideal 3407 7075
S A V Resource 1441
 S A V Blackcap May 4136

#GDAR Game Day 449
S R Erianna 335
 Erianna 1141 of Mc Cumber

#R R Rito 707
 Ideal 3407 of 1418 076
 #S A V 8180 Traveler 004
 #S A V May 2397
 #Boyd New Day 8005
 #G D A R Miss Wix 474
 #Sinclair Extra 4X13
 Erianna 8021 of Mc Cumber

BW	87
ADJ 205	702
WWR	101

CE	BW	WW	YW	Milk	Dam's Production
2	2.9	56	105	20	3/98

Here is a nice son of Resource whose dam and granddam both scored high for udder quality and both are highly fertile sticking to AI every year. His dam, SR Erianna 335, has an udder score of 8 and a disposition score of 10. **3/4 Brother to Lots 28 and 29.**



Erianna 1141 of Mc Cumber • Maternal granddam of Lot 30.



Strommen Ranch delivers! We truly enjoy visiting our customers at their ranches and seeing our genetics at work in their herds.

LOT 32 S R RESOURCE 7175

BD: 4/5/2017

Reg #: 18969407

Rito 707 of Ideal 3407 7075
S A V Resource 1441
 S A V Blackcap May 4136

#Leachman Right Time
S R Emma E 375
 Sitz Emma E 2552

#R R Rito 707
 Ideal 3407 of 1418 076
 #S A V 8180 Traveler 004
 #S A V May 2397
 #N Bar Emulation EXT
 Leachman Erica 0025
 #G D A R Traveler 044
 Sitz Emma E 447

BW	89
ADJ 205	714
WWR	102

CE	BW	WW	YW	Milk	Dam's Production
2	2	52	94	19	3/102

Another Resource out of a cow with a time-tested ancestry. The Emma E cow family comes to us from Sitz in Montana. His pedigree features some of the greatest cow-making sires the breed has ever known: Rito 054, Traveler 044, Right Time and top it off with the maternal and performance champ, Resource.

LOT 31 S R RESOURCE 7148

BD: 3/27/2017

Reg #: 18969402

Rito 707 of Ideal 3407 7075
S A V Resource 1441
 S A V Blackcap May 4136

S R Rangefinder 730
S R Madame Pride 4116
 YT Madame Pride 820

#R R Rito 707
 Ideal 3407 of 1418 076
 #S A V 8180 Traveler 004
 #S A V May 2397
 #B C C Bushwacker 41-93
 M H Eldorene 712
 #S A V 004 Density 4336
 S A V Madame Pride 2330

BW	85
ADJ 205	804
WWR	115

CE	BW	WW	YW	Milk	Dam's Production
0	3.9	68	118	23	2/114

This Resource son stems from the Madame Pride cow family that has shown its strength at SAV. His very productive and easy fleshing dam scores an 8 for udder score and has stuck AI every year. She has a progeny WR of 2/114 and his granddam has 4/105.

LOT 33 S R RESOURCE 7157

BD: 3/30/2017

Reg #: 18969404

Rito 707 of Ideal 3407 7075
S A V Resource 1441
 S A V Blackcap May 4136

S R Rangefinder 730
S R Dorothy Ideal 3104
 S R Dorothy Ideal 035

#R R Rito 707
 Ideal 3407 of 1418 076
 #S A V 8180 Traveler 004
 #S A V May 2397
 #B C C Bushwacker 41-93
 M H Eldorene 712
 S R Canyon 712
 Ideal 3551 of 7451 7387

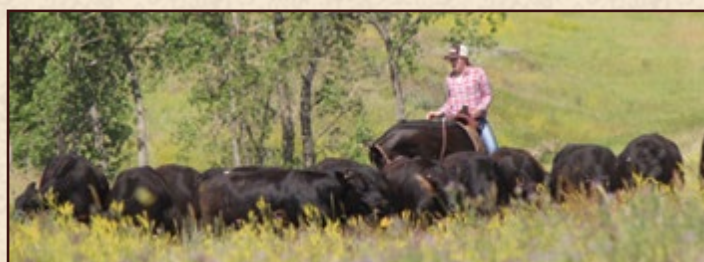
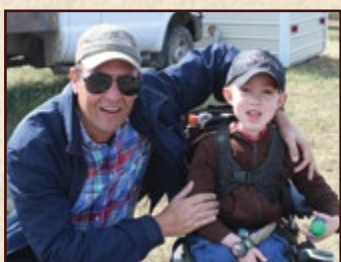
BW	104
ADJ 205	726
WWR	104

CE	BW	WW	YW	Milk	Dam's Production
-7	6	59	107	19	3/100

Here is a long-bodied younger Resource that just keeps getting better every day. His dam sticks to her AI service every year and scores a 9 for udder score and an 8 for disposition.



Family is life's
GREATEST GIFT.





LOT 34 ~ S R CAPITALIST 715

LOT 34 S R CAPITALIST 715

BD: 3/6/2017

Reg #: 18969382

#S A V Final Answer 0035
Connealy Capitalist 028
Prides Pita of Conanga 8821

#Connealy Thunder
S R Lady Blue 512
S R Lady Blue 323

#Sitz Traveler 8180
S A V Emulous 8145
#C R A Bextor 872 5205 608
Prides Trav of Conanga 6499
#Baldridge Kaboom K243 KCF
#Parka of Conanga 241
#O C C Paxton 730P
#S R Lady Blue 631

BW	77
ADJ 205	743
WWR	107

CE	BW	WW	YW	Milk	Dam's Production
10	0.4	54	93	23	1/107

Recommended for use on heifers. These close-bred bulls by Capitalist and out of Thunder daughters would be a good group to put together to breed a bunch of heifers. 715 stems from our Lady Blue cow family, where production, fertility and fleshing ability are a standard. While raising this good dude, his dam stuck first cycle to AI. His granddam, S R Lady Blue 323, has stuck to her AI service every year while maintaining a 3/101 progeny WR and his Pathfinder granddam also stuck every year to AI service and had a progeny WR of 7/106. **3/4 Brother to Lots 14, 15, 16, 35, 52, 53, 62, 63, 70 and 74.**



LOT 36 ~ S R CAPITALIST 745

LOT 35 S R CAPITALIST 711

BD: 3/5/2017

Reg #: 18969380

#S A V Final Answer 0035
Connealy Capitalist 028
Prides Pita of Conanga 8821

#Connealy Thunder
S R Miss Wix 499
Miss Wix 1209 of Mc Cumber

#Sitz Traveler 8180
S A V Emulous 8145
#C R A Bextor 872 5205 608
Prides Trav of Conanga 6499
#Baldridge Kaboom K243 KCF
#Parka of Conanga 241
Sitz JLS Emulation Ext 536P
Miss Wix 7051 OF Mc Cumber

BW	71
ADJ 205	676
WWR	97

CE	BW	WW	YW	Milk	Dam's Production
12	-1.3	42	74	23	1/97

Recommended for heifers. This sure-fire, calving-ease bull is from a gentle Thunder daughter that stems from our beautiful double-bred Emulation 1209 cow that had a picture-perfect udder. If you are keeping replacements back, or want a premium for the females you sell, buy these 3/4 Brothers by Capitalist and out of Thunder daughters! **3/4 Brother to Lots 14, 15, 16, 34, 52, 53, 62, 63, 70 and 74.**

LOT 36 S R CAPITALIST 745

BD: 3/10/2017

Reg #: 18971491

#S A V Final Answer 0035
Connealy Capitalist 028
Prides Pita of Conanga 8821

#Woodhill Admiral 77K
S R Burgette 365
#S R Burgette 031

#Sitz Traveler 8180
S A V Emulous 8145
#C R A Bextor 872 5205 608
Prides Trav of Conanga 6499
#S A F Focus of E R
Woodhill Lass 344-1178
#O C C Paxton 730P
S R Burgette 839

BW	86
ADJ 205	739
WWR	106

CE	BW	WW	YW	Milk	Dam's Production
7	1.9	58	100	21	3/95

Big-barreled, soft-made, easy-fleshing TANK. This guy goes back to our high selling cow from our 2016 cow sale. His dam as well as his Pathfinder granddam stuck to their AI service every year and have perfect 365-day calving intervals. He weaned off at 739 lbs to ratio 106. A different twist with a shot of Admiral in the pedigree.



LOT 37 ~ S R CHISUM 7138

<i>Flush Brothers</i>							
LOT 37 S R CHISUM 7138							
BD: 3/24/2017				Reg #: 18987625		BW	79
CE	BW	WW	YW	Milk	Dam's Production	ADJ 205	681
5	1.4	47	75	23	3/92	WWR	ET
LOT 38 S R CHISUM 7129							
BD: 3/21/2017				Reg #: 18987623		BW	91
S Alliance 3313				Paws Up Alliance 9561		ADJ 205	818
#S Chisum 6175				Paws Up 9048 Emulation Ext		WWR	ET
#S Gloria 464				S Eclipse 169			
#Paramont Ambush 2172				#S Gloria 209			
B C C Ambush Anita 41-158				#Bandolier Eston Durness 42B			
R C Anita T Bando 918903				E W S Miss Burgess 1720			
				#Tehama Bando 155			
				R C Traveling Ann 8903			
CE	BW	WW	YW	Milk	Dam's Production		
5	1.4	47	75	23	3/92		

We purchased some embryos out of a full sister to BCC Bushwacker 41-93 and got these two flush brothers by the performance sire Chisum. We like the look of these two bulls and think they would go great together. It would be a super way to make an even set of feeder calves. Many Angus breed legends in this time-tested pedigree for maternal function and performance.



Soo Line Motive 9016 is the sire of Lot 39



B C C Bushwacker is a full sibling to the dam of Lots 37-38.

LOT 39 S R MOTIVE 727							
BD: 3/8/2017				Reg #: 18971384		BW	89
HF Kodiak 5R				Sandy Bar Advantage 43M		ADJ 205	720
Soo Line Motive 9016				Wilbar Ruby 955N		WWR	103
TLA Beauty 5R				RR 7407 Rainmaker 2154			
S A V Resource 1441				Terlene Beauty 35F			
S R Blackbird 531				Rito 707 of Ideal 3407 7075			
DR Blackbird 186				S A V Blackcap May 4136			
				Sinclair Super Hero 8RD2			
				DR Blackbird 823 of R R 0468			
CE	BW	WW	YW	Milk	Dam's Production		
4	2.4	53	92	21	1/103		

Here is the only Motive son in the sale this year. We like the phenotype of the Motive cattle and will have a bigger group in next year's sale. He achieved an adjusted weaning weight of 720 off of a first calf Resource daughter that also stuck to her first cycle AI service and scored an 8 for udder and a 9 for disposition. We think you will like this bull. He has a different pedigree for our customer base.



LOT 40 ~ JVC CHARLO 740

LOT 40 JVC CHARLO 740

BD: 1/20/2017

Reg #: 18716611

#O C C Paxton 730P
Coleman Charlo 0256
Bohi Abigale 6014

Jocko Valley Focus 8101
JVC Barbara 206
C C A Barbara 0138

O C C Focus 813F
O C C Blackbird 736K
#Sitz Traveler 8180
S A V Abigale 6062
#S A F Focus of E R
Mytty Countess 906
C C A Emblazon 702
Three Trees Barbara T1963

BW	80
ADJ 205	712
WWR	100

CE	BW	WW	YW	Milk	Dam's Production
12	-0.7	45	81	22	3/93

Recommended for use on heifers. Here is one of the two Charlo sons we have. He came to us on the side of his mother from the Jocko Valley dispersal in Mont. This massive-bodied, thick-made bull is gentle and quiet and we think fits the bill for adding fleshing ability and volume. He goes back to CCA Emblazon 702, a bull many producers say is one of the best female makers they have ever used.



*Coleman Donna 714
Maternal granddam
of Lot 40.*

*Coleman Donna 386
Maternal
great granddam
of Lot 40.*



LOT 41 ~ JVC CHARLO E35

LOT 41 JVC CHARLO E35

BD: 1/22/2017

Reg #: 18744014

#O C C Paxton 730P
Coleman Charlo 0256
Bohi Abigale 6014

#S A V Final Answer 0035
Coleman Donna 1264
Coleman Donna 714

O C C Focus 813F
O C C Blackbird 736K
#Sitz Traveler 8180
S A V Abigale 6062
#Sitz Traveler 8180
S A V Emulous 8145
#Connealy Onward
Coleman Donna 386

BW	62
ADJ 205	663
WWR	ET

CE	BW	WW	YW	Milk	Dam's Production
15	-2.2	45	87	27	2/103

Recommended for use on heifers. The other of only two Charlo sons in the sale this year. This January bull is certainly a dependable candidate for a sleep-all-night, calving-ease bull, as he has one of the lowest birth EPD's in the sale. His granddam is one of Larry Coleman's top cows and his great granddam is the famous Donna 386. This bull came to us on the side of his mother from the Jocko Valley dispersal in Mont.

LOT 42 S R EMULATION XXP 725

BD: 3/8/2017

Reg #: 18969387

#N Bar Emulation EXT
Sinclair Emulation XXP
#N Bar Primrose Y3051

#Emulation N Bar 5522
N Bar Primrose 2424
#N Bar Emulation EXT
#N Bar Primrose 2429
#Paramont Ambush 2172
R C Anita T Bando 918903
Leachman Booster
Vermilion O Lass 6153

BW	96
ADJ 205	681
WWR	98

#B C C Bushwacker 41-93
#S R O Lass 705
21 A R O Lass 824

CE	BW	WW	YW	Milk	Dam's Production
-6	4.6	52	88	17	8/103

This guy is a bit behind as he lost his mother in early August. He still ended up weaning at near 700 lbs. and is out of the O Lass cow family that puts power and longevity into their progeny. His Pathfinder dam stuck AI 9 out of 10 years and she had 11 calves in 9 years! His granddam, the 824 cow, stuck to her AI service every year we owned her and had a progeny WR of 12/102.

COMMITMENT TO QUALITY GENETICS

In response to your requests, we have made a substantial financial commitment to continue to increase the quality and number of proven genetics we have to offer. To that end, our embryo transplant and donor program has reached new levels. In 2014, we placed 28 embryos. In 2015, we increased to 58. In 2016, we increased to 93 implanted and in 2017, we implanted 124 embryos out of our proven, foundation donor cows. This gives us the ability to increase the amount of full brothers we can offer, along with an extensive two-cycle A.I. program, so that large sire groups and full, three-quarter- and half-brothers can be obtained to help you add consistency to your replacement females and feeder calves.

Just like we responded to your request to provide a selection of older-age bulls, this commitment to genetics is due to you, our loyal customers, asking for these options and we are keen on honoring your requests.

LOT 43 S R EMULATION XXP 749

BD: 3/12/2017

Reg #: 18969393

#N Bar Emulation EXT
Sinclair Emulation XXP
#N Bar Primrose Y3051

#Emulation N Bar 5522
N Bar Primrose 2424
#N Bar Emulation EXT
#N Bar Primrose 2429
#D H D Traveler 6807
Dixie Erica of C H 1019
#High Valley 4C6 Ambush
V D A R Beauty 50

BW	76
ADJ 205	727
WWR	104

#O C C Emblazon 854E
#S R Beauty 507
#M H Beauty 938

CE	BW	WW	YW	Milk	Dam's Production
8	-0.1	49	83	17	11/103

This bull is terribly gentle and seems to always find you. His 12-year-old Pathfinder dam weaned him off with an adjusted weaning weight of 727 lbs. She carries a progeny WR of 11/103. She stuck AI 10 out of 11 times, has a perfect 365-day calving interval and comes from a Pathfinder granddam that had a tremendous production record. Maternal brothers are working for Stepler Ranch of Mont., Jim Hornbacher, Tracey Rixen and Cody Sand, all of N.D.



V D A R Beauty 50 • Maternal great granddam of Lots 18,19 and 43.

LOT 44 S R EMULATION XXP 740

BD: 3/10/2017

Reg #: 18969390

#N Bar Emulation EXT
Sinclair Emulation XXP
#N Bar Primrose Y3051

#Emulation N Bar 5522
N Bar Primrose 2424
#N Bar Emulation EXT
#N Bar Primrose 2429
Rito 707 of Ideal 3407 7075
S A V Blackcap May 4136
#Sitz Alliance 6595
S R Beauty 612

BW	80
ADJ 205	719
WWR	103

S A V Resource 1441
S R Beauty 434
S R Beauty 953

CE	BW	WW	YW	Milk	Dam's Production
4	1.6	55	101	17	2/105

Here is the last of the XXP sons to sell and certainly not the least. His dam, S R Beauty 434, is a massively made cow with a ton of volume and rib shape, a nice udder and great disposition. She has stuck every year to her AI service and stems from our long-lived Beauty cow family. Maternal lineage here with XXP, Resource, Alliance 6595, Right Time, Traveler 6807 and New Trend.



S R Beauty 434 • Dam of Lot 44



*"If you can't put your head on your pillow at night and **visualize your ideal cow**, the odds of you making one are very, very slim."*

"I AM ANGUS: ED OLIVER, GEORGIA"



CATTLE THAT *Thrive* IN A GRASS-BASED, NO-FRILLS ENVIRONMENT

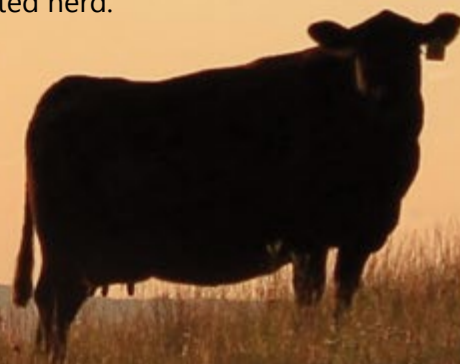
Our goal is to produce cattle that can do more with less. We select our Angus females for their fleshing ability on native range, fertility, longevity and sound udder and leg structure. Our cattle must survive – and thrive – in a no-frills, grass-based environment of the Northern Plains. Our calves grow out on grass and mother's milk and are NEVER exposed to creep feed.

We expect our cows to breed back within the first two cycles and wean a calf that is a high percentage of her bodyweight. For 11 years straight, our cows have increased weaning weights and the percentage of cows calving in the first two cycles, while we have maintained downward pressure on input costs.

This spring our registered Angus cows will be done calving in roughly 40 days. Every calf born on our ranch in 2018 will be a product of AI or embryo transfer.

Our ranch consists of 100% grazing land and we purchase any supplemental feed necessary to get through a typical North Dakota winter. This situation has quickly taught us the value of managing our natural resources so that our cattle can graze quality, unharvested forages well into the winter. It has reinforced the value we place on cattle that successfully convert grass and forage into pounds of beef.


We invite you to join us for our Maternal Power Angus Bull Sale, Feb. 24, 2018, starting at 3 p.m. at the ranch, Fort Rice, ND. Our bulls' pedigrees are stacked with six to eight generations of proven, balanced, female making genetics and we stand behind them with an industry-leading guarantee and a powerful, maternally oriented herd.





PROVEN, BALANCED COW-MAKERS

Our cattle are backed by generations of proven, efficient genetics, emphasizing calving ease, fleshing ability, udder quality, disposition, structure and fertility.



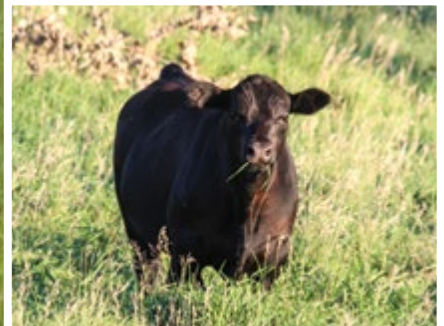
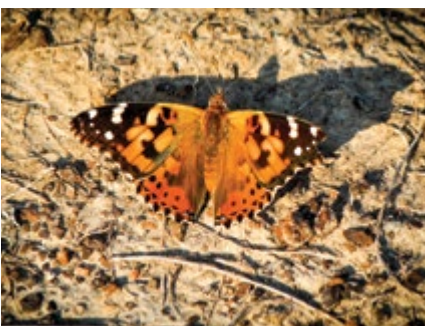
A BALANCING ACT:

Chasing fads or using one-trait selection is a really good way to hurt the important traits we all need to survive in the beef industry. The important traits every cowherd needs are fertility, longevity and fleshing ability, as well as sound feet, legs and udders. It is our intention to breed cattle that excel at certain traits, but not at the expense of other important traits.

- We want fleshing ability, but not at the expense of fertility.
- We want cattle to perform, but not to an extreme that it diminishes the cows' ability to breed back and maintain her condition in our environment.
- We want to continually improve weaning weights, but not with the expense of added input cost.
- We want cattle with acceptable carcass merit, but not at the expense of maternal traits.
- We select cattle that are moderate in frame, but we demand that they perform and have ample muscle.

This all sounds like a perfect game plan, but is really a juggling act of sorts. We do extensive research and appraise lots of cattle so that we can make the best informed decision about the genetics we bring in to keep our program moving in the right direction.

Every decision we make is based on our customers. If you won't benefit from our decisions, we won't benefit from our decisions. By taking a balanced approach to genetic improvement, we hope to manage our risk – and help you manage yours.





ABOUT THE 2 YEAR-OLDS

After having requests from customers to provide a selection of aged bulls in the sale, once again we retained a group of tremendous two-year-old bulls for your selection. As we learned last year, keeping these two-year-old bulls is no small task.

With the addition of registered females and our commitment to expanding our embryo transfer program, we are forging on with this program as a commitment to our customers' requests.

The bulls for the 2018 sale were specifically held for this sale and, with the exception of two we used on our heifers, are all virgin two-year-olds that are ready for heavy use.

They are thick, stout and ready for heavy service in big country. We are excited to offer these bulls, as it gives us the chance to see our genetics as they age and develop.



LOT 50 ~ S R THUNDER 6100



S R Polly 061 • Maternal granddam of Lot 50



S R Polly 804 • Maternal great granddam of Lot 50

LOT 50

S R THUNDER 6100

BD: 3/14/2016

Reg #: 18642491

#Baldridge Kaboom K243 KCF
#Connealy Thunder
#Parka of Conanga 241

#Jauer 353 Traveler 589 27
Pleasant of Conanga 736
#Bon View Bando 598
Partina of Conanga 6237
Rito 707 of Ideal 3407 7075
S A V Blackcap May 4136
S R Great Plains 821
S R Polly 804

BW	89
ADJ 205	683
WWR	105

S A V Resource 1441
S R Polly 4101
S R Polly 061

CE	BW	WW	YW	Milk	Dam's Production
0	2.2	54	100	24	1/105

We start the 2-yr-old bulls this year with a tremendous Thunder son from a beautiful Resource daughter that scored near perfectly for udder and disposition. This bull is long, deep and thick. He has more than enough muscle and mass and a maternal lineage to leave a tremendous set of females. He stems from our Polly cow family that is represented throughout this catalog. The Polly cow family injects length, muscle and body-depth, along with females that are made for the long-haul with their fertility and production.



Connealy Thunder • Sire of Lot 50.



LOT 51 ~ S R CAPITALIST 6139

LOT 51 S R CAPITALIST 6139
BD: 3/23/2016 Reg #: 18642516

#S A V Final Answer 0035 Connealy Capitalist 028 Prides Pita of Conanga 8821	#Sitz Traveler 8180 S A V Emulous 8145 #C R A Bextor 872 5205 608 Prides Trav of Conanga 6499	BW 90 ADJ 205 696 WWR 107
#H A Image Maker 0415 S R Barbaramere Nell 433 Sitz Barbaramere Nell 798	#Hero 6267 of R R 2418 H A Rito Blackcap 9038 #O C C Bonanza 880B Sitz Barbaramere Nell 2075	

CE	BW	WW	YW	Milk	Dam's Production
4	2.7	60	103	23	1/107

The Barbaramere Nell cow family is a foundation cow family for the Sitz herd in Montana and, as you can see with 6139, there must be some punch behind them. He is a tremendously long and deep bull with a masculine appearance and pedigree that screams great females and feeder calves that will push down the scales. Pony up boys and put this guy on your load you will be glad you did. Jim Swenson of N.D., selected a full brother to the dam of Lot 51.

LOT 53 S R CAPITALIST 650
BD: 3/8/2016 Reg #: 18642446

#S A V Final Answer 0035 Connealy Capitalist 028 Prides Pita of Conanga 8821	#Sitz Traveler 8180 S A V Emulous 8145 #C R A Bextor 872 5205 608 Prides Trav of Conanga 6499	BW 83 ADJ 205 696 WWR 107
#Connealy Thunder S R Beauty 322 #S R Beauty 983	#Baldridge Kaboom K243 KCF #Parka of Conanga 241 S R Canyon 712 S R Beauty 605	

CE	BW	WW	YW	Milk	Dam's Production
7	0.7	57	97	23	2/108

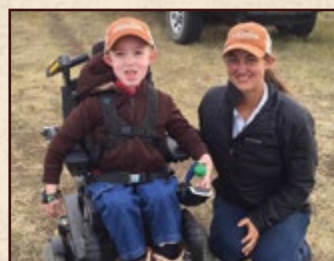
Here is an opportunity to put together a set of 2-yr-old Capitalist sons that are $\frac{3}{4}$ brothers. That mating has worked well for us and we have many bulls in the sale that are bred that way. 650 performed well at weaning ratioing 107 and his productive dam has a progeny WR of 2/108 and his Pathfinder granddam is a beautiful cow that stems from our Beauty cow family. **$\frac{3}{4}$ Brother to Lots 14, 15, 16, 34, 35, 52, 62, 63, 70 and 74.**

LOT 52 S R CAPITALIST 6132
BD: 3/20/2016 Reg #: 18642514

#S A V Final Answer 0035 Connealy Capitalist 028 Prides Pita of Conanga 8821	#Sitz Traveler 8180 S A V Emulous 8145 #C R A Bextor 872 5205 608 Prides Trav of Conanga 6499	BW 76 ADJ 205 667 WWR 103
#Connealy Thunder S R Blackcap 318 #S R Blackcap 002	#Baldridge Kaboom K243 KCF #Parka of Conanga 241 #21AR Outfitter 6032 S R Blackcap 509	

CE	BW	WW	YW	Milk	Dam's Production
11	-0.9	52	92	23	3/103

Looking for a bull with more size and scale? This bull may fit your bill! He is an outlier in the pen, but will fit those who lean towards those cattle. His dam has a great disposition as do most of the Thunder daughters and his Pathfinder granddam has a progeny WR of 4/105. Use him to produce a tremendous set of performance-oriented females. **$\frac{3}{4}$ Brother to Lots 14, 15, 16, 34, 35, 53, 62, 63, 70 and 74.**



This summer we spotted not one, but TWO 'gators on our ranch! Katherine Voegel (pictured above with Clint) and Lacy Meister (right) were the animal science students from the University of Florida "Gators," who interned at our ranch this summer. They each earned their bachelor's degrees in December.

'Gators' on the North Dakota prairie?!





LOT 51 ~ S R RESOURCE 635



LOT 55 ~ S R RESOURCE 6145

LOT 54 S R RESOURCE 635

BD: 3/7/2016

Reg #: 18642432

Rito 707 of Ideal 3407 7075
S A V Resource 1441
 S A V Blackcap May 4136

#O C C Paxton 730P
#S R Bonnie Belle 104
 #S R Bonnie Belle 980

#R R Rito 707
 Ideal 3407 of 1418 076
 #S A V 8180 Traveler 004
 #S A V May 2397
 O C C Focus 813F
 O C C Blackbird 736K
 S R Canyon 712
 MH Bonnie Belle 945

BW	92
ADJ 205	630
WWR	ET

CE	BW	WW	YW	Milk	Dam's Production
4	1.5	57	100	22	4/116

This bull is one of my favorites in the pen. He is an ET calf that is a full brother to the high-selling bulls the last two years. Unfortunately, he was raised on an 11-yr-old commercial recipient mother that didn't have enough milk, but he definitely caught up to the rest! He is super stout, deep and expressive in his muscle pattern. This is a tremendous opportunity to get a top-end calf in an older package. Full brothers are working for Kellen Unruh, John Lord and Emmett Diede, all of N.D., and Cleveland Creek Land and Cattle, of Mont. **3/4 Brother to Lots 17, 55, 64 and 71.**



*Kellen Unruh
 purchased
 S R Resource
 6101, a full
 brother to Lot 54,
 in our 2017 sale.*

LOT 55 S R RESOURCE 6145

BD: 3/25/2016

Reg #: 18642518

Rito 707 of Ideal 3407 7075
S A V Resource 1441
 S A V Blackcap May 4136

#O C C Paxton 730P
S R Sky Tee Lass 159
 S R Sky Tee Lass 955

#R R Rito 707
 Ideal 3407 of 1418 076
 #S A V 8180 Traveler 004
 #S A V May 2397
 O C C Focus 813F
 O C C Blackbird 736K
 #21AR Outfitter 6032
 S R Sky Tee Lass 708

BW	87
ADJ 205	635
WWR	98

CE	BW	WW	YW	Milk	Dam's Production
3	2.3	56	102	19	4/101

Resource crossed on the Paxton females has been a home run every time and this bull is no exception. He is extremely long with that look that Resource stamps on all of his progeny. His moderate-framed easy-fleshing dam has stuck to her AI service every year and maintains a 370-day calving interval. **3/4 Brother to Lots 17, 54, 64 and 71.**



LOT 56 ~ S R RESOURCE 6152

LOT 56

S R RESOURCE 6152

BD: 3/28/2016

Reg #: 18642523

Rito 707 of Ideal 3407 7075
S A V Resource 1441
 S A V Blackcap May 4136
 #O C C Great Plains 943G
S R Lucy 951
 #S R Lucy 646

#R R Rito 707
 Ideal 3407 of 1418 076
 #S A V 8180 Traveler 004
 #S A V May 2397
 #N Bar Emulation EXT
 Dixie Erica of C H 1019
 Oak Hollow 7709 of 1318 1118
 #S R Lucy 403

BW	87
ADJ 205	663
WWR	102

CE	BW	WW	YW	Milk	Dam's Production
5	1.9	56	99	20	6/102

Here is a truckload coming at you. Easily the most massive, easy-fleshing bull in the sale. I think this bull could put weight on just smelling feed! His exceptional Great Plains dam has a production record of 6/102 and his Pathfinder granddam and Pathfinder great granddam have progeny WRs of 6/104 and 10/11, respectively. Grab ahold of the rope – the good cowboys will find him! **3/4 Brother to Lot 57.**

LOT 57

S R RESOURCE 640

BD: 3/8/2016

Reg #: 18642436

Rito 707 of Ideal 3407 7075
S A V Resource 1441
 S A V Blackcap May 4136
 #O C C Great Plains 943G
S R Betty 3210
 M H Betty 916

#R R Rito 707
 Ideal 3407 of 1418 076
 #S A V 8180 Traveler 004
 #S A V May 2397
 #N Bar Emulation EXT
 Dixie Erica of C H 1019
 #Papa Durabull 9805
 V D A R Betty 23

BW	87
ADJ 205	550
WWR	85

CE	BW	WW	YW	Milk	Dam's Production
0	3.1	40	79	19	3/93

A $\frac{3}{4}$ brother to Lot 56, this quiet-natured bull goes back to the productive Betty cow family that would be an outcross to most of our program. His near perfect uddered dam scored a 9 for udder and an 8 for disposition. **$\frac{3}{4}$ Brother to Lot 56.**



S R Lucy 951 • Dam of Lot 56.



M H Betty 916 • Maternal granddam of Lot 57.



LOT 59 ~ S R REVIVAL 6155

LOT 58

S R RESOURCE 611

BD: 3/4/2016

Reg #: 18642412

Rito 707 of Ideal 3407 7075
S A V Resource 1441
 S A V Blackcap May 4136

#Leachman Right Time
S R Everelda Entense 372
 Sitz Everelda Entense 3133

#R R Rito 707
 Ideal 3407 of 1418 076
 #S A V 8180 Traveler 004
 #S A V May 2397
 #N Bar Emulation EXT
 Leachman Erica 0025
 #D H D Traveler 6807
 Sitz Everelda Entense 1137

BW	90
ADJ 205	608
WWR	94

CE	BW	WW	YW	Milk	Dam's Production
0	3.6	49	94	19	2/95

A time-tested-maternal lineage behind this bull. He is a stout-made, moderate-framed tank. His dam stems from the famous Everelda Entense cow family that originated at Sitz Angus in Montana and scores a perfect 10 for udder and a 10 for disposition. His granddam, a full sister to the Genex bull Sitz Traveler 9929, is a direct daughter of Everelda Entense 1137 who sold ½ interest for \$200,000 at 14 years of age.



LOT 58 ~ S R RESOURCE 611

LOT 59

S R REVIVAL 6155

BD: 3/29/2016

Reg #: 18642525

#Sitz Dash 10277
Ox Bow Revival 1313
 Ox Bow Manor 933

S R Alliance 904
Lassie 101 of Circle V
 Lassie 841 of Circle V

#Sitz Upward 307R
 Sitz Everelda Entense 2665
 #K C F Bennett Total
 #Ox Bow Manor 7105
 #Sitz Alliance 6595
 S R Betty 512
 #Sinclair Extra 4X13
 Lassie 4194 of Mc Cumber

BW	89
ADJ 205	677
WWR	104

CE	BW	WW	YW	Milk	Dam's Production
8	1.1	48	84	23	5/101

The stout, attractive dude is the only Revival in the sale. He is out of a really nice Alliance 904 daughter that has a production record of 5/101. She has an udder score of 8 and a disposition score of 9. This bull is really nice and will be easy to find in the pen.



Lassie 101 of Circle V • Dam of Lot 59.

LOT 60 S R BLACK DYNASTY 6138

BD: 3/22/2016

Reg #: 18834561

Black Dynasty 0470
T A F Black Dynasty 321
#Sitz Henrietta Pride 151K

#O C C Emblazon 854E
SR Lucy 319
M H Lucy 761

#S A V Final Answer 0035
Enlass Lucy of Conanga 379
#N Bar Emulation EXT
Sitz Henrietta Pride 501
#D H D Traveler 6807
Dixie Erica of C H 1019
#N Bar Emulation EXT
V D A R Lucy 336

BW	83
ADJ 205	662
WWR	102

CE	BW	WW	YW	Milk	Dam's Production
7	0.5	48	77	20	12/98

His dam Lucy 319 was one of my favorite cows to ever walk the pastures at Strommen Ranch. She was very fertile and had a perfect udder and unbelievable disposition. She had a calving interval of 12@366 – many years calving on the exact same day as the year before. This bull needs to be bought for his potential to make some of the nicest females you will be able to find. Lots of maternal greats in his pedigree.



S R Lucy 319 • Dam of Lot 60.

LOT 61 S R BLACK DYNASTY 6137

BD: 3/22/2016

Reg #: 18834560

Black Dynasty 0470
T A F Black Dynasty 321
#Sitz Henrietta Pride 151K

Sitz Bridger 678X
#S R Rosetta 266
K N M Rosetta 046

#S A V Final Answer 0035
Enlass Lucy of Conanga 379
#N Bar Emulation EXT
Sitz Henrietta Pride 501
#O C C Missing Link 830M
#Sitz Barbaramere Jet 132U
Cole Creek Cedar Jumbo 68R
K N M Rosetta 633

BW	82
ADJ 205	662
WWR	102

CE	BW	WW	YW	Milk	Dam's Production
9	0.2	47	77	28	4/108

Another Black Dynasty son from a really productive cow. Final Answer, Jauer 589, N Bar Emulation EXT, Rainmaker 340, Missing Link and Quantum 3330 all fill the blanks in this bull's ancestry. You can't write a pedigree with more common-sense genetics that will work for a living! His Pathfinder dam does a great job and has a production record of 4/108.

LOT 62 S R CAPITALIST 658

BD: 3/9/2016

Reg #: 18834556

#S A V Final Answer 0035
Connealy Capitalist 028
Prides Pita of Conanga 8821

#Connealy Thunder
S R Lady Blue 418
#S R Lady Blue 631

#Sitz Traveler 8180
S A V Emulous 8145
#C R A Bextor 872 5205 608
Prides Trav of Conanga 6499
#Baldridge Kaboom K243 KCF
#Parka of Conanga 241
Oak Hollow 7709 of 1318 1118
Farview Lady Blue 2228

BW	79
ADJ 205	657
WWR	101

CE	BW	WW	YW	Milk	Dam's Production
8	0.4	54	92	22	2/93

The Capitalist X Thunder mating was one that just flat worked most every time. Many $\frac{3}{4}$ and $\frac{1}{2}$ brother bulls in this sale could be put together for groups of cows or heifers so that your resulting calf crop will have extreme uniformity. Really nice bull here with body length and scale. **3/4 Brother to Lots 14, 15, 16, 34, 35, 52, 53, 63, 70 and 74.**

LOT 63 S R CAPITALIST 670

BD: 3/11/2016

Reg #: 18642463

#S A V Final Answer 0035
Connealy Capitalist 028
Prides Pita of Conanga 8821

#Connealy Thunder
S R Clova Pride 435
S R Clova Pride 047

#Sitz Traveler 8180
S A V Emulous 8145
#C R A Bextor 872 5205 608
Prides Trav of Conanga 6499
#Baldridge Kaboom K243 KCF
#Parka of Conanga 241
#21AR Outfitter 6032
M H Clova Pride 834

BW	76
ADJ 205	639
WWR	98

CE	BW	WW	YW	Milk	Dam's Production
8	0.5	47	83	20	1/98

Recommended for use on heifers. A Capitalist X Thunder that was used on our heifers. We turned out two bulls on our heifers and 670 was one of them. Luckily for us, but unfortunately for the bulls, there were only 8 out of 68 heifers that didn't stick to AI service, so they didn't get to have much fun! Nice bull whose great granddam is the foundation of our Clova Pride cow family. All necessary tests will be completed. **3/4 Brother to Lots 14, 15, 16, 34, 35, 52, 53, 62, 70 and 74.**

LOT 64 S R CAPITALIST 633

BD: 3/7/2016

Reg #: 18642430

#S A V Final Answer 0035
Connealy Capitalist 028
Prides Pita of Conanga 8821

Ox Bow Revival 1313
S R Beauty 472
#S R Beauty 230

#Sitz Traveler 8180
S A V Emulous 8145
#C R A Bextor 872 5205 608
Prides Trav of Conanga 6499
#Sitz Dash 10277
Ox Bow Manor 933
#GDAR Game Day 449
S R Beauty 605

BW	78
ADJ 205	643
WWR	99

CE	BW	WW	YW	Milk	Dam's Production
7	0.8	51	89	20	2/95

Recommended for use on heifers. A Capitalist X Thunder that was used on our heifers. We turned out two bulls on our heifers and 670 was one of them. Luckily for us and unfortunately for the bulls there were only 8 out of 68 heifers that didn't stick to AI service so they didn't get to have much fun! His dam scored a perfect 10 for udder and a 9 for disposition. All necessary tests will be completed. **3/4 Brother to Lots 17, 54, 55 and 71.**

"We place extensive pressure on our cowherd and ourselves to generate the right genetics that will positively impact our customers herds."



LOT 65 ~ S R RESOURCE 642

LOT 65 S R RESOURCE 642

BD: 3/8/2016

Reg #: 18642438

Rito 707 of Ideal 3407 7075
S A V Resource 1441
 S A V Blackcap May 4136

#O C C Paxton 730P
S R Lady Blue 118
 #S R Lady Blue 631

#R R Rito 707
 Ideal 3407 of 1418 076
 #S A V 8180 Traveler 004
 #S A V May 2397
 O C C Focus 813F
 O C C Blackbird 736K
 Oak Hollow 7709 of 1318 1118
 Farview Lady Blue 2228

BW	85
ADJ 205	593
WWR	ET

CE	BW	WW	YW	Milk	Dam's Production
5	0	49	88	24	4/118

We had two embryo calves last fall whose commercial recipient mother didn't do her job and this is the other one. This maternal brother to the XXP flush of 6 brothers is also a full brother to bulls working for Casey Joens of S.D. and Cleveland Creek Land and Cattle of Mont., and a maternal brother is working for John Knudson of N.D. We have retained every female S R Lady Blue 118 has produced and they are exceptional. She will have 20+ progeny born here this spring. **3/4 Brother to Lots 8 and 69.**



S R Eldorene 966 • Dam of Lot 67.

LOT 66 S R RESOURCE 6107

BD: 3/15/2016

Reg #: 18642498

Rito 707 of Ideal 3407 7075
S A V Resource 1441
 S A V Blackcap May 4136

#Sitz Alliance 6595
S R Betty 820
 S R Betty 417

#R R Rito 707
 Ideal 3407 of 1418 076
 #S A V 8180 Traveler 004
 #S A V May 2397
 #Sitz Traveler 8180
 #Sitz Barbaramere Jet 2698
 #O C C Emblazon 854E
 M H Betty 916

BW	94
ADJ 205	689
WWR	106

CE	BW	WW	YW	Milk	Dam's Production
0	3.3	56	97	21	7/103

This nice-made Resource is the product of another mating that has worked well for us. Resource on our Alliance females has been a combination that has worked well, resulting in easy keeping performance bulls that will produce a scale-smashing set of feeder calves and leave a tremendous set of females. S R Betty 820 has a progeny WR of 7/103 and was one of the most massive and easy-fleshing females we had. This bull doesn't have a terrible disposition, but he is not a lap cat.

LOT 67 S R RESOURCE 691

BD: 3/13/2016

Reg #: 18642482

Rito 707 of Ideal 3407 7075
S A V Resource 1441
 S A V Blackcap May 4136

#21AR Outfitter 6032
S R Eldorene 966
 #S R Eldorene 604

#R R Rito 707
 Ideal 3407 of 1418 076
 #S A V 8180 Traveler 004
 #S A V May 2397
 #O C C Magnitude 805M
 21AR Sara E802
 #S A V 8180 Traveler 004
 M H Eldorene 712

BW	92
ADJ 205	634
WWR	98

CE	BW	WW	YW	Milk	Dam's Production
-4	4.2	52	98	21	6/101

This Resource son is out of a massively constructed Outfitter daughter that has a progeny WR of 6/101 and a Pathfinder granddam that has a progeny WR of 6/108. This bull was sold, then injured his shoulder after last years' sale, so we kept him and he was fully healed by June. It will not affect his breeding performance.



S R Betty 820 • Dam of Lot 68.

LOT 68 S R RESOURCE 6158

BD: 3/31/2016

Reg #: 18642528

Rito 707 of Ideal 3407 7075
S A V Resource 1441
 S A V Blackcap May 4136

#R R Rito 707
 Ideal 3407 of 1418 076
 #S A V 8180 Traveler 004
 #S A V May 2397
 #Sitz Alliance 6595
 S R Betty 512

BW	87
ADJ 205	609
WWR	94

S R Alliance 904
#Miss Wix 145 of Circle V
 Miss Wix 6227 of Mc Cumber

MC Cumber 8005 New Day 455
 Miss Wix 4179 of Mc Cumber

CE	BW	WW	YW	Milk	Dam's Production
1	3.2	49	97	23	4/104

We like to have heifers out of our Pathfinder cows, but you don't always get what you wish for and they sometimes have bulls. 6158 should be a good bull to put out in big country to cover a nice bunch of cows. His dam has stuck to her AI service every year and attained a progeny WR of 4/104 and achieved Pathfinder status with a 365-day calving interval.

LOT 69 S R RESOURCE 620

BD: 3/6/2016

Reg #: 18642419

Rito 707 of Ideal 3407 7075
S A V Resource 1441
 S A V Blackcap May 4136

#R R Rito 707
 Ideal 3407 of 1418 076
 #S A V 8180 Traveler 004
 #S A V May 2397
 O C C Focus 813F
 O C C Blackbird 736K
 Oak Hollow 7709 of 1318 1118
 Farview Lady Blue 2228

BW	92
ADJ 205	654
WWR	101

#O C C Paxton 730P
S R Lady Blue 323
 #S R Lady Blue 631

CE	BW	WW	YW	Milk	Dam's Production
2	2.4	56	100	20	3/101

Another noteworthy mating of Resource on the Paxton females has given us a real moderate, thick and stout bull that brings along a great maternally efficient cow family in the Lady Blue's. His dam, S R Lady Blue 323, has a progeny WR of 3/101 and has stuck to AI service every year with an udder score of 9 and a disposition score of 7. His Pathfinder granddam stuck every year to her A.I. service and has a progeny WR of 7/106. **3/4 Brother to Lots 8 and 65.**

LOT 71 S R CAPITALIST 6102

BD: 3/14/2016

Reg #: 18642493

#S A V Final Answer 0035
Connealy Capitalist 028
 Prides Pita of Conanga 8821

#Sitz Traveler 8180
 S A V Emulous 8145
 #C R A Bextor 872 5205 608
 Prides Trav of Conanga 6499
 #Sitz Dash 10277
 Ox Bow Manor 933
 S R Alliance 025
 S R Beauty 984

BW	85
ADJ 205	671
WWR	103

Ox Bow Revival 1313
S R Beauty 465
 S R Beauty 2109

CE	BW	WW	YW	Milk	Dam's Production
5	2.4	53	93	22	2/109

3/4 Brother to Lots 17, 54, 55 and 64.

LOT 73 S R CAPITALIST 629

BD: 3/7/2016

Reg #: 18834558

#S A V Final Answer 0035
Connealy Capitalist 028
 Prides Pita of Conanga 8821

#Sitz Traveler 8180
 S A V Emulous 8145
 #C R A Bextor 872 5205 608
 Prides Trav of Conanga 6499
 #B C C Bushwacker 41-93
 M H Eldorene 712
 S R Alliance 909
 S R Lucy 835

BW	88
ADJ 205	607
WWR	93

S R Rangefinder 730
S R Lucy 4107
 S R Lucy 174

CE	BW	WW	YW	Milk	Dam's Production
1	3.7	46	79	20	1/93

3/4 Brother to Lot 72.

LOT 70 S R CAPITALIST 6111

BD: 3/15/2016

Reg #: 18642502

#S A V Final Answer 0035
Connealy Capitalist 028
 Prides Pita of Conanga 8821

#Sitz Traveler 8180
 S A V Emulous 8145
 #C R A Bextor 872 5205 608
 Prides Trav of Conanga 6499
 #Baldridge Kaboom K243 KCF
 #Parka of Conanga 241
 #O C C Emblazon 854E
 21 A R Sara 802A

BW	94
ADJ 205	626
WWR	96

#Connealy Thunder
S R Sara 321
 S R Sara 522

CE	BW	WW	YW	Milk	Dam's Production
5	2.1	49	87	19	1/96

These age-advantaged bulls will cover a bunch of cows and be able to cover more country than most yearlings. This bull is another Capitalist X Thunder mating and goes back to the easy fleshing Emblazon that comes from the Ohlde program in Kansas. **3/4 Brother to Lots 14, 15, 16, 34, 35, 52, 53, 62, 63 and 74.**

LOT 72 S R CAPITALIST 603

BD: 2/28/2016

Reg #: 18642406

#S A V Final Answer 0035
Connealy Capitalist 028
 Prides Pita of Conanga 8821

#Sitz Traveler 8180
 S A V Emulous 8145
 #C R A Bextor 872 5205 608
 Prides Trav of Conanga 6499
 #B C C Bushwacker 41-93
 M H Eldorene 712
 S R Canyon 712
 Ideal 3551 of 7451 7387

BW	83
ADJ 205	631
WWR	97

S R Rangefinder 730
S R Dorothy Ideal 3104
 S R Dorothy Ideal 035

CE	BW	WW	YW	Milk	Dam's Production
4	1.8	48	82	20	3/100

The Capitalists are lighter birth cattle that grow well to weaning then slow down to mature weight. Daughters are easy-fleshing, nice-uddered females that will work for a living. Nice bull in the pen, turn him out and pick him up in the fall – he'll get the job done. His dam sticks to her AI service every year and scores a 9 for udder score and an 8 for disposition. **3/4 Brother to Lot 73.**

*"Cattle that excel in the convenience traits are cattle that **SUPPORT THE BOTTOM LINE.**"*

LOT 74

S R CAPITALIST 647

BD: 3/8/2016

Reg #: 18642443

#S A V Final Answer 0035
Connealy Capitalist 028
 Prides Pita of Conanga 8821

#Connealy Thunder
S R Blackcap 427
 S R Blackcap 150

#Sitz Traveler 8180
 S A V Emulous 8145
 #C R A Bextor 872 5205 608
 Prides Trav of Conanga 6499
 #Baldridge Kaboom K243 KCF
 #Parka of Conanga 241
 #21AR Outfitter 6032
 S R Blackcap 702

BW	57
ADJ 205	600
WWR	92

CE	BW	WW	YW	Milk	Dam's Production
14	-2.4	41	74	21	1/92

Recommended for use on heifers. Lot 74 is the lightest birth 2-year-old bull with a birth EPD of -2.4 and an actual birth weight of 57. He will be able to handle a large group of heifers. These nice, age-advantaged heifer bulls will be an asset for those pastures where you should have two yearling bulls, but could get by with one 2-year-old. **3/4 Brother to Lots 14, 15, 16, 34, 35, 52, 53, 62, 63 and 70.**

LOT 75

S R SUMMIT 6169

BD: 4/11/2016

Reg #: 18834559

#S Summit 956
S Summit 3198
 Summitcrest Elite 035E

S A V Resource 1441
S R Blackbird 410
 DR Blackbird 157

#GDAR Game Day 449
 #S Pride Anna 709
 #N Bar Emulation EXT
 #Summitcrest Elite 054P
 Rito 707 of Ideal 3407 7075
 S A V Blackcap May 4136
 Sinclair Memento 8RL4
 DR Blackbird 770

BW	74
ADJ 205	620
WWR	96

CE	BW	WW	YW	Milk	Dam's Production
7	0.5	39	71	20	2/96

Recommended for use on heifers. Sure-bet, sure-fire calving-ease bull. He will be able to handle a large group of heifers. S Summit was one of Select Sires high selling A.I. sires for heifer breeding projects. These nice, age-advantaged heifer bulls will be an asset for those pastures where you should have two yearling bulls but could get by with one 2-year-old.

Maternal **POWER** Promotes Profitability

We've said it for years: true profitability in the beef business is driven by cattle that have the **Maternal Power** to do more with less.

As your seedstock provider, we want your operation to be profitable and sustainable for generations – regardless of the market. That is why we require our stock to thrive in a Northern Plains, grass-based environment with minimal supplementation. They must do more with less.

Strommen Ranch cows must calve annually and wean a calf that is a high percentage of its dam's bodyweight. They must also possess the basic phenotypic traits to cover country, breed on time, have the smarts and mothering ability to do it on their own, all the while performing under the conditions that Mother Nature has dealt us. We select for fertility, longevity, sound structure and realistic performance in the cowherd.

Strommen Ranch calves grow out on grass. We DO NOT creep feed or use lick tubs. It would be easy for us to consistently achieve 800-900 lb. weaning weights if we used creep feed, but we choose to run our seedstock operation like a real-world commercial operation. We want your calves to perform in your environment – that's why we ask our bulls and females to shine in a similar one. We are proud of the fact that for 11 years straight, we've increased weaning weights and the percentage of cows bred within the first two cycles, while maintaining mature cow size and placing downward pressure on our input costs. We are continually asking our cattle to do more with less.

Similarly, in our development program we also begin with the end in mind. We don't need to know which calf can eat the most – we need to know which calf can do the most in his natural environment. This helps us protect your investment in a Strommen Ranch bull. In order for you to have a bull that lasts and has longevity, he should not be pushed at an early age. It is our intention to identify optimum gains. We hope to have allowed the bulls to express their genetic potential without pushing so much energy through them that feet, hock or liver damage occur. Our ultimate goal is to have the bulls range-ready, sound-footed and ready to go to work for you.

As your seedstock source, we are fully committed to producing the type of cattle that will positively impact your bottomline. Having traveled extensively as an A.I. rep. for Genex and looking at cowherds throughout the region, I have learned that cattle with phenotypic appeal, fleshing ability and fertility are the most profitable.

Cattle that breed early in the cycle, are structurally sound and can raise big calves efficiently in a practical environment with minimal inputs are the kind of cattle we produce and believe will have a positive impact on your bottomline now and into the future.




FOR OUR VALUED BULL CUSTOMERS, WE OFFER:

- Free feeding until May 1.
- Free delivery within 500 miles.
- **Industry Leading, 90-day breeding season GUARANTEE.**
- Freeze branded.
- Fertility tested.
- Bulls on a 44 Mcal ration.
- Discounts for volume purchases and repeat buyers.

*Your satisfaction is
our top priority.*



THANKS FOR YOUR INTEREST IN OUR CATTLE!
WE LOOK FORWARD TO SEEING YOU FEB 24, 2018.

www.StrommenRanch.com •  Connect with us on facebook: www.facebook.com/StrommenRanch

BRUIN TORQUE 5261



"**WE ARE VERY IMPRESSED** by the Torque calves here at Upchurch Angus. They all came unassisted and are lighter than expected at birth. The calves have a lot of vigor at birth and explode with growth. He has mated well to our Resource daughters. The calves have nice shape and we feel the daughters will be exceptional replacements while the bulls will be stout, sound and fertile. We used Torque harder this breeding season as we are so pleased with his first progeny. Torque is very docile, good-footed and long spined. I feel he's the Density son that the Industry has been waiting on."

- Jason Upchurch, Upchurch Angus

"The first set of Torque calves have been the **HIGHLIGHTS OF THE CALVING SEASON.** They arrived with smaller than expected birth weight and hit the ground growing. The bulls are long-bodied and have the look to be performance type cattle in the right package. The females are the type and kind to build a robust maternal herd around. We continue to use him aggressively in our operation both AI and in the ET program."

- Joe Fischer, Bruin Ranch

BRUIN TORQUE 5261

BD: 08/02/2015

Reg #: 18248293

#S A V 8180 Traveler 004
#S A V 004 Density 4336
S A V May 7238

#Connealy Dateline
Falcon Blackbird 6071
#Vermilion Blackbird 5044

#Sitz Traveler 8180
Boyd Forever Lady 8003
#Leachman Right Time
#S A R Prospector May 9124
#D H D Traveler 6807
#Eila Eila of Conanga
#Leachman Right Time
Vermilion Blackbird 3525

CE	BW	WW	YW	Milk	Marb	REA	SC	\$B
-1	+2.7	+58	+112	+28	+0.11	+0.78	+1.09	+132.65

We are equally excited about Bruin Torque 5261. He is by the maternal and Pathfinder sire, SAV Density 4336, and out of the dam of Bruin Uproar. This double-bred Right Time will transmit muscle, performance, maternal ability and docility. Torque will be a perfect mating for daughters of today's popular sires that need more maternal function and power.

OWNERS:



BRUIN RANCH





Time-Sensitive Material. Please Deliver Immediately!

Aaron & Sheyna Strommen
6485 County Road 80
Fort Rice, N.D. 58554

www.StrommenRanch.com

Return Service Requested



LOT 3



Hard working, moderate-framed, easy-fleshing, maternally oriented ANGUS cattle.

Maternal **POWER** **ANGUS BULL SALE**

FEB. 24, 2018 • 3 P.M. • FORT RICE, N.D.

Selling **75** Yearling &
Two-Year-Old
Angus Bulls

Sires include:
Sinclair Emulation XXP
SAV Resource 1441
Connealy Capitalist 028

Many full, 3/4 and 1/2 brothers sell!



*Your Strommen Ranch
purchase includes:*

- Free feeding after the sale.
- Free delivery within 500 miles of Strommen Ranch.
- Fertility tested.
- Full 90-day breeding-season guarantee.

- Freeze branded.
- Bulls fed a 44 Mcal ration.
- Discounts for volume purchases & repeat buyers.
- Your satisfaction is our top priority.

VIDEOS OF THE BULLS ARE AVAILABLE ON OUR WEBSITE

Ranch: (701) 445-2020

WWW.STROMMENRANCH.COM

Aaron: (701) 290-7983