

81,900 sq.ft. Of Light Industrial For Sale at 29550 Ecorse Rd. Romulus Mi. 48174



Listing ID:
Status: Active
Property Type: Vacant Land For Sale
Possible Uses: Industrial
Gross Land Area: 81,900 sq.ft.
Sale Price:
Unit Price: Cash to Seller
Sale Terms:



Overview/Comments

Located on the corner of Ecorse and Middle-belt in the city of Romulus.

General Information

Tax ID/APN: 263960770
Possible Uses: Industrial
Sale Terms: Cash to Seller

Area & Location

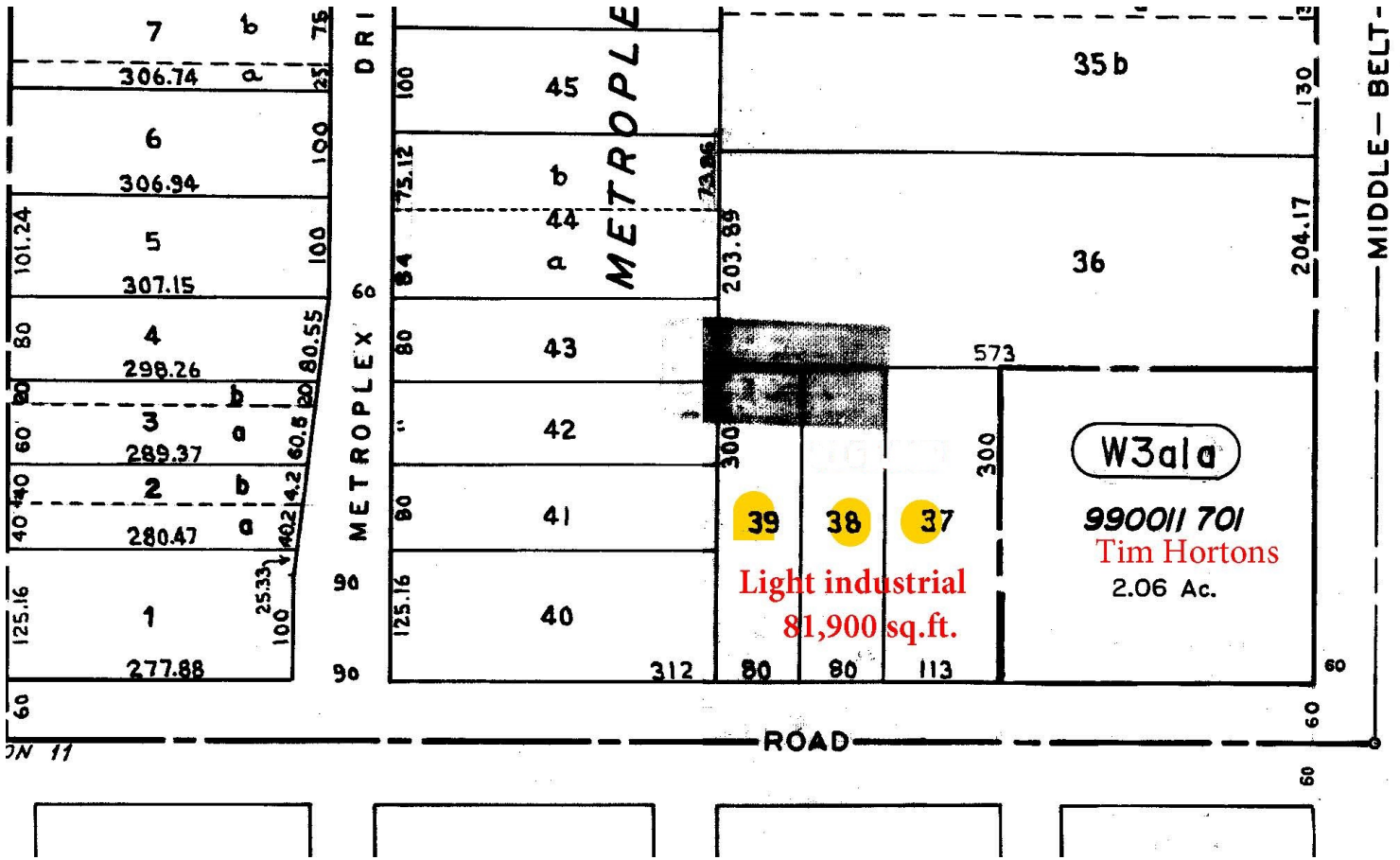
Highway Access: I 94
Airports: D.T.W.

Land Related

Zoning Description: Industrial
Available Utilities: Electric, Water, Gas, Sewer, Cable, Internet Access
Water Service: Municipal
Sewer Type: Municipal

Location

Address: 29550 Ecorse Rd, Romulus, MI
County: 48174 Wayne
MSA: Detroit-Warren-Dearborn
Submarket: Airport District



Property Contacts



Yvon Rea
 Rea Construction
 734-946-8730