

The July 2017 Newsletter Gardens Gate



Port St. Lucie
Botanical Gardens



TIPS FOR USING BROMELIADS IN YOUR INTERIOR!

There are more than 2,800 species of bromeliads around the world. They vary in care, look, and maintenance. However, there is one common feature – bromeliads are special. They fascinate you with colors and smells. Bromeliads are like tattoos. Once you get one, you'll want to get more. So what can you do when you have more bromeliads than you can count? The answer is simple – use these plants for decorating your home.

Add a Tropical Touch to Your Entrance

Whether you are living in a house or an apartment, decorating the entrance with bromeliads is a great idea. You may place several pots with bromeliads in the yard. Remember to check whether your plants can survive the climate. Bromeliads like tropical humid warm shady climate. Don't expose plants to direct sunlight.



[Continued on Pg4](#)

Contents

President's Message
Board & Committees
Video Of The Month
Summer Propagation Class
Patriotic Pine Art

[Pg2](#)
[Pg2](#)
[Pg2](#)
[Pg7](#)
[Pg8](#)

Out & About with The Gardens
July Calendar
Garden Center Update
Become a Member Today
Garden of the Month: Butterfly
How To Start A Butterfly garden
July Planting Calendar
What's Flowering & Edibles to Plant
Somerset Horticulture Club Success
Upcoming Events

[Pg11](#)
[Pg22](#)
[Pg23](#)
[Pg24](#)
[Pg25](#)
[Pg26](#)
[Pg30](#)
[Pg31](#)
[Pg32](#)
[Pg34](#)

Reminder

BROMELIADS & MORE PLANT SALE
SATURDAY • JULY 22ND
9:00AM - 1:00PM



2410 SE Westmoreland Blvd.
 Port St. Lucie, FL 34952
 Phone: 772.337.1959
 Fax: 772.237.5952
 E-mail: info@pslbotanicalgardens.org
 Web: www.pslbg.org
 Hours: Wednesday - Saturday 10am - 4pm
 Sunday Noon - 4pm
 Closed Monday, Tuesday & Holidays
 Suggested Donations:
 Adults \$5
 Students \$2
 Children 12 & Under Welcome
 Free for FPSLBG Members and
 Active Military with family (IDs required)

Mission Statement . . .

Friends' mission is to create and maintain a beautiful, serene sanctuary in the center of Port St. Lucie that is environmentally sound and naturally diverse and to provide educational, cultural and recreational opportunities for all who visit.

Officers & Directors . . .

President: Joleen King
 Vice President: Illona Christie
 Secretary: Melinda DeMarco
 Treasurer: Cheri Mabry
 Directors: Mike Alexander
 Heather Furnari
 Brenda Gustafson
 Judy Nash-Wade
 Jeffrey Policar
 Glenn Ryals
 Tim Sutton

Administrative Assistant: Claire Clark

Standing Committee Chairs . . .

Election Committee: TBD
 Finance Committee: Cheri Mabry
 Gift Shop Committee: Mike Aleander
 Horticulture Committee: Brenda Gustafson
 Membership & Volunteer Committee: Illona Christie
 Resource Development Committee: Melinda DeMarco
 Strategic Planning Committee: Glenn Ryals

Newsletter...

Editor: Judy Nash-Wade
 Design: Mark Barnes

The Port St. Lucie Botanical Gardens is managed and operated by Friends of the Port St. Lucie Botanical Gardens, Inc. The Friends of the Port St. Lucie Botanical Gardens, Inc. receives no funding from any government agency. Your admission donations help us maintain and grow The Gardens.

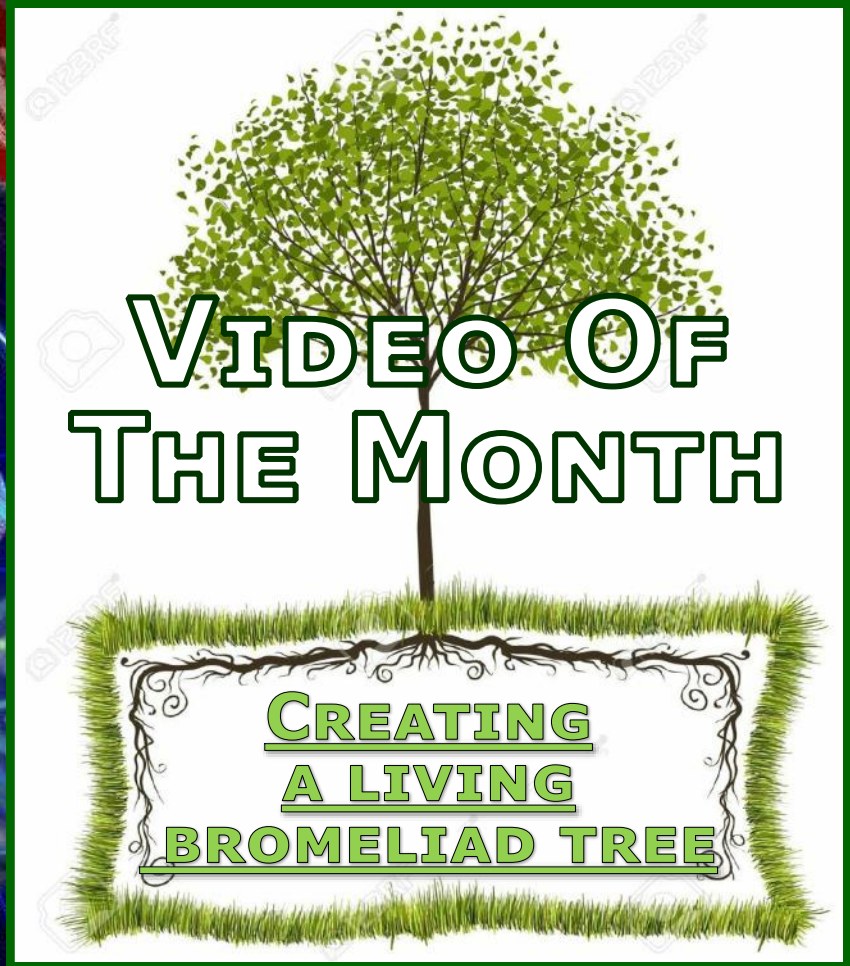
PRESIDENT'S MESSAGE...

Greetings to everyone as we bring you up to date on July activities at the Port St Lucie Botanical Gardens. As the temperatures assume their typical summer sizzle, indoor activities take on importance. In celebration of the 4th of July, our Pavilion will be displaying a unique and inventive folk art tableau. Make sure to catch this unique example of whimsy and creativity.



Please don't allow the summer temperatures to discourage visiting your PSL Botanical Gardens! We appreciate each and every visitor.

Joleen King
President





PORT ST. LUCIE

CIVIC CENTER

ELEGANT • FULL-SERVICE • EVENT FACILITY

9221 SE Civic Center Pl PSLCivicCenter@cityofpsl.com
Port St Lucie, FL 34952 www.cityofpsl.com/civic
772-807-4488



PORT ST. LUCIE
**PARKS &
RECREATION**



THE SAINTS

At Port St. Lucie Golf Course
www.CityofPSL.com/Golf

2601 SE Morningside Blvd. • (772) 398-2901
Port St. Lucie, FL 34952 • Fax: (772) 398-2778

Welcome to All Garden Goers...

This month our
Jazz Jams will be held on
**July 12th,
& July 19th**
starting at 6:30 pm

JAZZ JAMS

At The Gardens

Donation \$6 per person.
Gardens & Jazz Society
Members \$5 per person.

Sponsored by the
Fort Pierce Jazz & Blues Society

The 19th Hole at the Saints

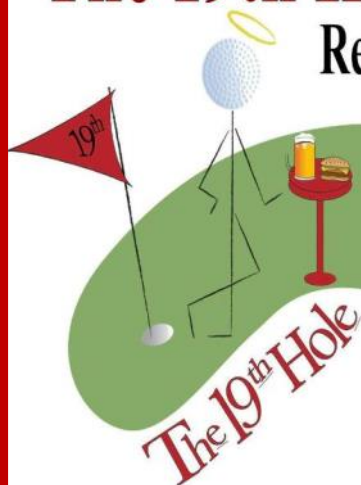
Restaurant & Banquet Hall

772-337-0180

Carl Bussett/Rick Aslin
Proprietors

& Sandpiper Room

2601 SE Morningside Blvd.
Port St. Lucie, Fl. 34952



Mark A. Barnes

Making You & Your business Look Great

772.801.8800

Mark@MarkBarnesMusic.com

- Business Card Designs
- Logo Designs
- Graphic Designs
- Speciality Cards
- Real Estate Ads & Designs
- Video Home Tours
- Basic Web Sites
- Copyright Services
- ASCAP & Music Site Setup
- QR Code Design
- Video Bios and Resumes
- Power Point Presentations
- Virtual Assistant
- Real Estate Services

If you live in the area that is characterized by colder seasons, consider planting your bromeliads in containers. A great thing about containers is that they provide plants with the adequate drainage and make them look natural in your landscaping. Just dig a hole and bury bromeliads containers. If there is a need, you'll transport plants inside with no damage.

Those who live in apartments may also make the hall more interesting by adding bromeliads. Choose containers that will go right with the general design of the space. Colorful plants will make the hall brighter and more inviting. All guests visiting you will have their moods boosted from the very beginning when they notice beautiful colorful bromeliads near the entrance.



Make Your Interior More Creative

If you love caring for plants, you know that bromeliads need humidity trays when inside. Filling the tray with small pebbles and other stones is a great way to boost your creativity. You may also experiment with different pots, choosing the right one that will both look great in your interior and fit a bromeliad.

Placing bromeliads at home will definitely boost your creativity. At first, you'll wonder where to put your favorite plants for summer. You'll take them away from direct sunlight and bring colors to some hidden spaces. In winter, you'll enjoy becoming happier because of changing the interior – you'll bring bromeliads back to windows.

The next way to get creative with bromeliads is to experiment with the combination of art, plants, and personalized spaces. While visiting your friends and family, you may have noticed that some interiors look cozy and inviting while other don't appeal to you at all. Why is it so? The answer is not

connected to the amount of money one has or a person's style. It's simple – some people make their interiors personalized, showcasing their favorite drawings, pictures, art objects, travel memories, and plants. Others just try to make their interiors trendy.

If you want to make your interior look appealing, you should definitely personalize it. Think about ways to combine your favorite bromeliads, other plants, textiles, and art. You'll definitely come up with a few interesting suggestions.

Your Home Needs More Colors



Aechmea, Guzmania, Neoregelia, and Vriesea are on the list of the most popular indoor bromeliads. It's not strange. Striking colors of these plants and a relatively easy maintenance make these bromeliads highly popular. There are many places where you may put these plants.

Think about your kitchen or a dining room. There is probably a lot of greenery: basil, mint, thyme, rosemary, etc. Using bromeliads in the kitchen will bring additional colors, making the space more positive and brighter.

The same concerns your living room. Bromeliads will add an element of surprise to any interior style. It's a great way to incorporate colors. If your interior features a light color palette, these plants may serve as a crisp counterpoint.

Bromeliads will also look great in your bedroom. The same concerns the office. Of course, if you place bromeliads in the office, you must be sure you'll be able to work and not stare at your gorgeous plants all the time. These colors may steal everyone's attention!

Let Your Plants Be Healthy and Your Home Trendy

Urban living may make people irritated easily. People search for new ways to get motivated and inspired. Many of them find this energy in the harmony of nature.

Combine using bromeliads with other botanical trend features: cushions with tropical prints, vintage botanical prints, interesting vases, and wall decorations. Together they will create an interesting mix, making your interior design appealing and trendy.

You may put bromeliads on the floor, windowsill, shelves. You may even have them floating in the air. To be more precise, using air bromeliads, you will create a peaceful and magical atmosphere.

Pink flower spikes of these air plants contrast nicely with a container or pot. Try out using wooden pots and glass terrariums. Wooden elements look more rustic. They are a great addition to the all-white interior. Glass terrariums look more fascinating. Floating in the air in groups, these plants add an element of contrast.

In nature, you will find air plants growing in trees. You may recreate the same look in your interior. For doing that you need a protected wooden post, sphagnum moss, and translucent fishing monofilament.

As these plants don't have roots, they need regular watering. You should spray them twice a week. Provide plants with such amount of water so that these bromeliads will dry out in 4 hours. Don't soak the base.

Bromeliads don't live for a long time. They usually start dying back after flowering. However, you may remove offsets and pups, giving a new life to your favorite plants and a new look to your interior.



only a couple of hours a week. We are also in need of Volunteers who have good maintenance skills! Call Brenda Gustafson at 772-678-8523 or visit us any Thursday, Friday or Saturday from 9:30AM to 12:00PM.

If you enjoy gardening and want to learn more about propagating your Florida plants, increase your plant knowledge and other gardening techniques, then join our team at the Propagation Garden Center. We're there to work and learn together. We're a friendly group who would like you to join us even if it's for



Propagation Garden Center

at the Port St. Lucie Botanical Gardens

**PROPAGATE PLANTS
FROM CUTTINGS –
IT'S LIKE MAGIC!**



SUMMER PROPAGATION SCHEDULE - 2017

Friday & Saturday: 9:30AM – 11:00AM

July 1	July 28 & July 29	August 11 & 12	September 9 & 23
July 14 & July 15		August 25 & 26	

JOIN US! VOLUNTEERS NEEDED AND APPRECIATED!

Learn to grow new plants from existing plants – and have fun at the same time!

You will learn and have fun while:

- identifying & taking cuttings from around the Garden
- propagating the cuttings
- up-potting, dividing and replanting plants
- moving and organizing plants throughout the garden center
- weeding & plant trimming the potted plants
- fertilizing & watering
- identifying plants
- preparing soil for planting
- pest management
- keeping a propagation area neat and orderly
- planting seeds – assist with our new seed planting program!
- Assisting with plant sales



Join our team of Propagating Gurus at the Garden Center propagation center headed by “Top Propagation Guru”, Ben Woodruff, Propagation Chair.

Bring garden gloves and hand clippers. Covered shoes are required. Hats and sun screen recommended. We have water available and lots of advice.



STUDENTS: EARN YOUR COMMUNITY SERVICE HOURS!
Call the Gardens at 772-337-1959 to sign-up.

PATRIOTIC HISTORY IN PINE ART

Visit the display June 28th – July 9th

Marching through and sleeping among Pine Cones was most certainly part of our Revolutionary War Patriots' daily challenges. Local residents Ann Harris and Richard Hunter have successfully added an enjoyable Pine Cone challenge into their lives: they create Pine and Pine Cone art! Their creations depicting scenes from the Revolutionary War are infused with creativity and skill as they use pine tree cones, bark and wood as the primary "building materials". This is a must see – they will display their works of art in the Gardens Pavilion from June 28th through July 9th during normal operating hours.

You will be impressed to see models of the Boston Tea Party, Battle of Concord, Signing of the Declaration of Independence, Liberty Bell, George Washington crossing the Delaware, and Pine Cone Patriots! Include a visit as part of your patriotic celebrations!







Out & About



With The Gardens

Sighted in The Gardens



Volunteers Richard and Jim prepare Shade House for City electricians



Camerin in Butterfly Garden



Simone Our very own mascot for The Red White and Blue Botanical Garden Sale!!!



Lobby Display by Paul Renwick

Leadership St. Lucie at The Gardens



Brenda with Leadership St. Lucie



Illona with Leadership St. Lucie



Lucky Little Frog



Carts ready to be filled for plant sales.



Hatching Turtles



Installing pillars for Bonsai Garden.



Bonsai Garden Pillars



How-To Seminar: Flower Arranging with Paul Renwick



EXPERIENCE COUNTS - AND SAVINGS ADD UP



Find out about the **Competitive Rates** and **Special Benefits** available through the AARP® Auto Insurance Program from The Hartford.

Ready to learn more? Contact our agency now:

POST INSURANCE



SEE HOW MUCH YOU COULD SAVE!
Call today for your **FREE, no-obligation quote:**

772-878-8184

POST INSURANCE
146 NW Central Park Plaza, Suite 102
Port St. Lucie, FL, 34986

info@insurewithpost.com
www.InsureWithPost.com

PSL Rocks Presents Gift to Friends



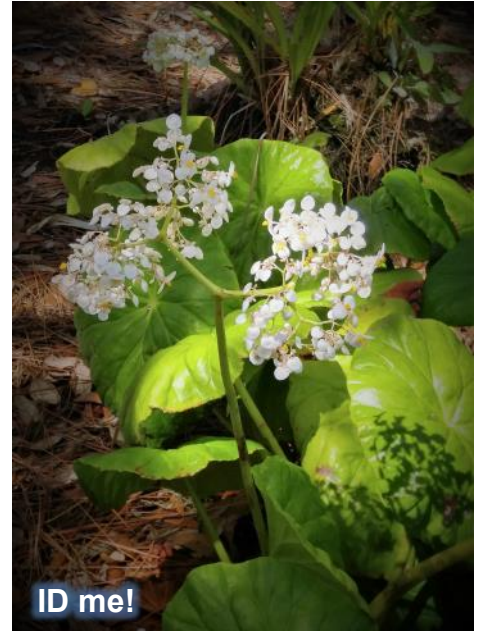
Around The Gardens



Find Me!



Find me in the Orchid Room



ID me!



Becky Kilko Memorial Day Lily
by Wayne Goldenberg



Passionflower photo by
Connie Pridgen



Silver Run Day Lily



Good or Bad?



National Garden Week gift
from Rio Lindo Garden

Visitor Photos







DONATIONS

*The Botanical Gardens run on Volunteer Power!
All who work here are on their own time for the
benefit of those who love & enjoy the gardens*

This is an

ALL VOLUNTEER

GARDEN

Your Donations are much

APPRECIATED

All Volunteer Garden



Welcome Garden Friends

Weddings at The Gardens





FRUIT TREES

MANGOS
AVOCADOS
LEMON
LIME
STAR FRUIT
JACK FRUIT
PAPAYA
BANANAS AND MORE

For a complete list of classes,
please visit our website at
www.pindersnursery.com

Pinder's
Nursery
Palm City, Florida



...growing flowers, food and friendships!

Monday-Saturday 9-5
Sunday 10-4

Since 1975, Locally Owned & Operated
5500 SW Martin Hwy. Palm City

772-781-8085

Calendar of Events



1 st	American Folk Art Display	10:00 am - 4:00 pm	All welcome
1 st	Summer Propagation Class	9:30 - 11:00 am	All Welcome
2 nd	American Folk Art Display	12:00 pm - 4:00 pm	All welcome
5 th	American Folk Art Display	10:00 am - 4:00 pm	All welcome
5 th	Intermediate Spanish Classes	10:00 - 11:30 am	All welcome
6 th	American Folk Art Display	10:00 am - 4:00 pm	All Welcome
7 th	American Folk Art Display	10:00 am - 4:00 pm	All Welcome
8 th	American Folk Art Display	10:00 am - 4:00 pm	All Welcome
9 th	American Folk Art Display	12:00 pm - 4:00 pm	All Welcome
11 th	Orchid Society Meeting	12:00 - 3:00 pm	Members welcome
12 th	Intermediate Spanish Classes	10:00 - 11:30 am	All welcome
12 th	Ft Pierce Jazz & Blues Concert	6:30 - 9:30 pm	\$6 Donation, Members \$5
13 th	PSL Anglers Club Meeting	6:00 - 9:30 pm	All welcome
14 th	Summer Propagation Class	9:30 - 11:00 am	All Welcome
15 th	Summer Propagation Class	9:30 - 11:00 am	All Welcome
16 th	South FL Daylily Society meeting	2:00 pm - 4:00 pm	Members welcome
19 th	Intermediate Spanish Classes	10:00 am - 11:30 am	Fee info. call 772.924.1002
19 th	Ft Pierce Jazz & Blues Concert	6:30 - 9:30 pm	\$6 Donation, Members \$5
20 th	Treasure Coast Hibiscus Society Mtg.	10:30 am - 12:00 pm	All welcome
20 th	TC Rare Fruit Club Meeting	6:00 - 9:30 pm	Members welcome
22 nd	Bromeliads and More Plant Sale	9:00 am - 1:00 pm	All welcome
26 th	Intermediate Spanish Classes	10:00 - 11:30 am	All welcome
27 th	TC Bonsai Society Everything You Wanted To Know About Bonsai	7:00 - 9:00 pm	Call Barbara @ 772.287.5356 to Register
28 th	Summer Propagation Class	9:30 - 11:00 am	All Welcome
29 th	Summer Propagation Class	9:30 - 11:00 am	All Welcome



Propagation
Garden Center
at the Port St. Lucie Botanical Gardens

SUMMER PLANT SALES

The Garden Center volunteers have been very busy preparing for our Summer plant sales with over 1000 plants to choose from. There are many variety of plants, including many different varieties of Coleus, Copper Leaf, Bromeliads, Penta's, and too many more to include. Stop in to Visit & Support the Gardens by purchasing a special plant or two or three for your garden. Don't forget that special plant for July 4th or that special Birthday for a loved one.



Most prices from \$1.00 to \$5.00

OPEN

**Thursday, Friday, & Saturday
10AM - 1PM.**

We have plants for every occasion!



**WE NEED
ONE GALLON POTS**

The Propagation Gardens Center is desperately in need of one gallon pots.

Our propagation expert, Ben Woodruff has been really busy propagating plants and we have over 1000 cuttings that when ready and rooted need gallon containers. Our budget is almost depleted. If you would like to donate one gallon pots or a monetary donation to the Garden Center, we would be so appreciative. Call Brenda at 772.337.1959.



Are you a Member of Friends? Friends Membership is...



Horticulture



Education



Preservation



Community



**Become a Member of a Growing Community...
Friends of the Port St. Lucie Botanical Gardens, Inc.**



**Click Here to
Join or Renew Your
Membership Today**



GARDEN OF THE MONTH: BUTTERFLY

Maintained by the Friends of the Port St. Lucie Botanical Gardens

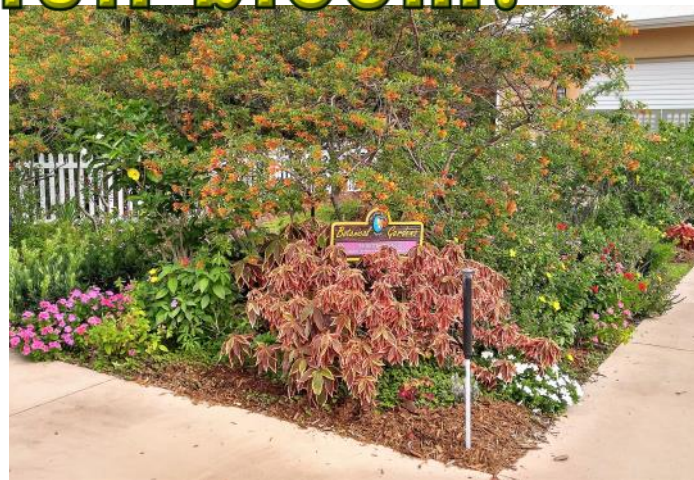
It's in full bloom – and that means LOTS of butterflies!

The Butterfly Garden Team, under the leadership of Phyllis Brown, has been hard at work planting, trimming and other maintenance tasks to insure that the gorgeous 4 section Butterfly Garden looks it's best for your enjoyment.

Stop by to sit on the new Butterfly benches and step on in to one or all four sections. Look for the new decorative stepping stones that invite you in. Take a moment to just stand still and quietly look around you – you will be thrilled at the fluttery activity that can only make you smile!



Live life in full bloom!



Upcoming Featured Garden Areas: August • Hibiscus Garden / September • Rose Garden / October: Orchid Room

How to Start a Butterfly Garden...

Beginning a butterfly garden can be as simple as choosing flowering plants that will invite adult butterflies to your garden to feed. But if you want to create a butterfly garden that will act as a sanctuary, attracting a wide variety of butterflies while also providing a place where butterflies can grow and multiply, you will first need some simple planning. By considering which plants to grow and evaluating your garden site, you can plant a butterfly garden that will help with the creation of more butterflies.

Plant Selection

Many flowering plants will attract butterflies to your location, but not all flowers are created equally in the compound eyes of a butterfly. Selecting plants that will feed butterflies while also encouraging them to stick around for a while, laying eggs and creating a new generation of butterflies, is your goal. To do this, you will need to choose plants that fall into two groups: nectar plants that will provide adult butterflies with energy and caterpillar food plants that will feed caterpillars. With careful selection from these two groups, your garden will provide for the entire life cycle of butterflies.

Choosing Nectar Plants

While shopping for garden plants, you will encounter many plants labeled “butterfly friendly.” These labels are most likely telling the truth and if you choose plants labeled for butterfly gardens, they will attract butterflies. Most likely, though, these plants are nectar plants, marketed for their bright blooms, and will not provide for the caterpillar stage of a butterfly’s life. Although many flowering plants provide nectar to butterflies, it is worth doing a little research to find you what plants attract the most butterflies in your area. Just as growing conditions vary by location, so do the popularity of butterfly nectar plants. Some plants will serve as both nectar and caterpillar food plants and it may be worth searching out some of these double duty offerings.

Choosing Caterpillar Food Plants

The relationship between butterflies, caterpillars and the plants they use for food is not a casual one. It is a relationship created over thousands of years as flowering plants developed along side insects. As a result of this long development, caterpillars will use only certain plants for food. At the same time, butterflies are equally picky about what plants they will select to lay their eggs on. In order to encourage caterpillars in the garden, butterfly gardeners need only select the plants that are preferred by caterpillars in their location. Nature and chemistry will take care of the rest.

Choosing Plants for Butterflies Common to Your Region

To determine which butterflies and caterpillars may arrive in your garden, visit local

butterfly gardens in your region or talk to other butterfly gardeners. If such opportunities do not exist, many butterfly field guides also provide information about which butterflies are likely to visit gardens and what food sources they prefer. Once you have identified butterflies that are most likely to visit your garden, select their preferred caterpillar food plants along with nectar plants that are recommended for your growing area.

Garden Site Selection

Planting a wide range of nectar and host plants is the best strategy for attracting the largest number of butterfly species. Butterflies may be attracted to the garden by a large patch of bright flowers, but they will linger longer if there are also areas that provide shelter, water, sun and a diverse group of plants that imitate the way plants grow in the wild.

Plant Diversity in the garden results from choosing plants of different types, such as shrubs, trees, perennials, and even vines. In choosing plants that grow to different heights, with a variety of flower shapes and colors that have different bloom times, you will be creating a garden that is attractive to a wide range of butterflies. Grouping more than one plant of each type together will help to unify the look of the garden and will lessen the distance that nectaring butterflies have to travel. If your garden is small and has no room for trees or shrubs, consider an arbor covered with vines to create height. There are many vines to choose from that act as nectar or caterpillar food plants.

Shelter

While shrubs and trees can create unnecessary shade, they do provide an important feature in the butterfly garden. Properly placed, trees and shrubs will shelter your garden from wind, which makes it easier for butterflies to explore your location. Additionally, trees and shrubs give valuable shelter where butterflies can roost at night or hide from predators. Keep in mind that many shrubs and trees are also caterpillar food plants!

Water is needed by butterflies, but not very much. Nectar, dew, and tree sap provide butterflies with moisture but puddles and moist dirt or sand are also popular water sources. Puddling stations can be as simple as a damp area of ground covered with sand. Placed where they are easily viewed and sheltered from the wind, puddling stations are thought to provide dissolved salts in addition to water.

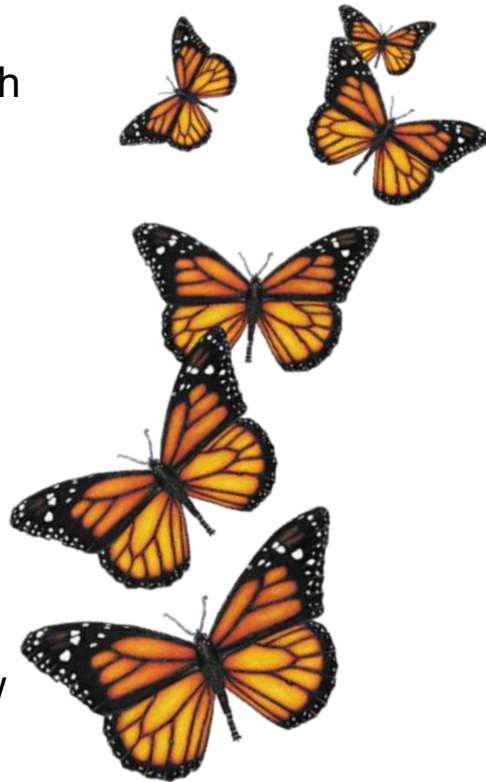
Sun is essential for the butterfly garden. Butterflies are cold-blooded insects that often start their day by warming their bodies in the sun. Be sure to include a spot in the garden where sunlight will reach the ground early in the day. Large rocks, exposed soil, or even pavement are all surfaces that will warm up in morning sunlight. Try to locate your garden where it will receive at least six hours of direct sunlight each day.

Once you have combined careful plant selection with the details of site selection, you

will have created a butterfly garden that is a microhabitat providing a unique location where a wide variety of butterflies can live and grow.

Plants that attract butterflies

Alyssum
Aster
Bee balm
Butterfly bush
Calendula
Cosmos
Daylily
Delphinium
Dianthus
Fennel
Globe thistle
Goldenrod
Hollyhock
Lavender
Liatris
Marigold
Musk mallow
Nasturtium
Oregano
Phlox



Purple coneflower
Queen Anne's lace
Sage
Scabiosa
Shasta daisy
Stonecrop
Verbena
Yarrow
Zinnia



Plants that attract butterfly larvae (caterpillars)

Borage
Fennel
Grasses
Hollyhocks
Lupine
Milkweed
Nettle
Thistle
Willow

A poster for 'Jazz Jams at The Gardens' featuring a saxophone and a trumpet. The background is dark with blue and orange light effects.

JAZZ JAMS

AT THE GARDENS

Wednesday
July 12th & 19th
6:30 - 9:30 pm

Presented By

The logo for the Jazz Blues Society, featuring a stylized saxophone and the text 'Jazz Blues SOCIETY'.

  "like" us on
facebook

**VISIT OUR
WEBSITE** 



Connect. Integrate. Simplify.

Technology for every workplace delivering advanced functionality, ease of use and peace of mind.

TOSHIBA
BUSINESS SOLUTIONS



Pleased to be in
your office

Proud to be in
your community

**THINK OF US AS YOUR OFFICE
SOLUTIONS PARTNER!**

**Toshiba Business Solutions
Proud To Sponsor
Friends of the
Port St. Lucie
Botanical Gardens**

It's not just a slogan; they're words we live by. Our local Toshiba team lives in this community just like you. Let us help you save as much as 40% on your document management needs.

To learn more please contact:

Daniel Pimpo

772-402-4878

daniel.pimpo@tbs.toshiba.com



Lets
grow
together



University of Florida IFAS Extension Central Florida Gardening Calendar — July

What to Plant

Annuals/Bedding plants: Summer annuals to plant now include celosia, coleus, torenia, and ornamental pepper. **See Annuals:** http://edis.ifas.ufl.edu/topic_annual_landscape_plants

Bulbs: Butterfly lily and gladiolus are bulbs that can be planted during the middle of summer. **See Bulbs for Florida:** http://edis.ifas.ufl.edu/topic_bulbous_flowers

Herbs: While summer is too hot to start herbs from seeds, many, such as oregano and mint, do well if started from small plants. **See Herbs:** http://edis.ifas.ufl.edu/topic_herbs

Vegetables: Plant tropical vegetables, such as boniato, calabaza, and chayote this month. **See South Florida Tropicals:** http://edis.ifas.ufl.edu/topic_series_south_florida_tropicals and *Chayote:* http://edis.ifas.ufl.edu/topic_chayote

Palms: Continue planting palms while the rainy season is in full swing. Support large palms with braces for 6–8 months after planting. Do not drive nails directly into a palm trunk. **See Palms:** http://edis.ifas.ufl.edu/topic_palms

What to Do

Trees: Prepare for hurricane season by checking trees for damaged or weak branches and pruning if needed. Hire an ISA-certified arborist. **See International Society of Arboriculture:** <http://isa-arbor.com/> and *Pruning Landscape Trees and Shrubs:* http://edis.ifas.ufl.edu/topic_tree_pruning

Lawns: Determine the cause of any lawn problems before taking action. If an insect is the culprit, treat only the affected area. Rule out disease or sprinkler malfunction. **See Turfgrass Pest Insects:** http://edis.ifas.ufl.edu/topic_turf_pest_insects

Fertilizer Bans: Numerous municipalities in south Florida prohibit the application of fertilizer to lawns and/or landscape plants during the summer rainy season (June–September). See if such an ordinance exists in your area.

Vegetable garden: Use summer heat to solarize the vegetable garden for fall planting. It takes 4–6 weeks to kill weeds, disease, and nematodes, so start now. **See Soil Solarization:** http://edis.ifas.ufl.edu/topic_soil_solarization

Irrigation: Install an inexpensive rain shutoff device to save money by overriding an irrigation system when it rains. If one is already installed, check that it is operating properly. **See Landscape Irrigation:** http://edis.ifas.ufl.edu/topic_landscape_irrigation

Pests on ornamental plants: Inspect the leaves of ornamental plants for small white dots that may indicate lace bugs at work. Spray forcefully with water to help control this pest. **See Landscape Pest Management:** http://edis.ifas.ufl.edu/topic_landscape_pests and *Landscape Lace Bug Pests:* http://edis.ifas.ufl.edu/topic_landscape_lace_bug_pests

Tropical fruit trees: Check for damage to fruit or leaves and take action to minimize the effect of insects and/or disease on developing fruit or the overall health of the tree. **See Tropical Fruit:** http://edis.ifas.ufl.edu/topic_tropical_fruit

WHAT'S FLOWERING in Florida?

JULY

**NORTH/
CENTRAL**

- Firebush* 
Native, evergreen (*Hamelia patens*)
- Crapemyrtle 
Non-native, deciduous (*Lagerstroemia spp.*)
- Hibiscus 
Native & Non-native, evergreen (*Hibiscus spp.*)
- Southern Magnolia 
Native, evergreen (*Magnolia grandiflora*)

* In both North and South.

Bird of Paradise

Non-native, evergreen (*Strelitzia reginae*)

 Firebush*

 Frangipani

Non-native, deciduous (*Plumeria rubra*)

 Orange Geiger Tree

Native, evergreen (*Cordia sebestena*)

 Royal Poinciana

Non-native, semi-evergreen (*Delonix regia*)

 Wild Olive

Native, evergreen (*Cordia boissieri*)

SOUTH




UF | IFAS Extension
UNIVERSITY of FLORIDA



Gardening SOLUTIONS 

For more information, please visit
GardeningSolutions.ifas.ufl.edu

EDIBLES TO PLANT IN JULY

	North	Central	South
 Survives Transplanting	Peppers Tomatoes		Sweet Potatoes
 Transplant With Care			
 Use Seeds	Cucumbers Okra Peas (southern) Pumpkin	Okra Peas (southern) Pumpkin	



UF | IFAS Extension
UNIVERSITY of FLORIDA



Gardening SOLUTIONS 

For more information, please visit
GardeningSolutions.ifas.ufl.edu



Somerset College Preparatory Academy Horticulture Club members, along with Port St Lucie Botanical Gardens and St. Lucie County Master Gardeners, recently celebrated the success of the 2017 pilot program. Participants enjoyed lunch and the presentation of certificates for achieving basic Horticulture practices and providing community service at the garden. Student Michael Bouzi was elected President of the Horticulture Club at the presentation by his peers.

Five hands-on workshops were presented by Master Gardeners and other *experts* at the Port St Lucie Gardens. Workshops included, Cleaning & Sharpening Tools by June and Bob Beers, Pruning Techniques by Lynda Salsbury, Soil Testing and Soil Deficiencies by Jim McGill, Propagating Techniques by Ben Woodruff and Landscaping Design by Dale Galiano. Following their workshops, students designed and planted a garden area at their school.

With a strong partnership between the Friends of the PSLBG, the Master Gardeners and Somerset College Preparatory Academy, students received exposure and awareness of horticulture that can develop a lifetime love of gardening or for a viable career option.

A special thanks to the Master Gardeners, Principal Erika Rains, and Dr. Abby O'Connor, Science Department Head who all had a part in making this pilot so successful and an on-going endeavor.

Submitted by:

Jeffrey Policar

PSLBG, Horticulture Club Representative

Brenda Gustafson

PSLBG Horticulture Chair





BROMELIADS & MORE PLANT SALE



**Saturday
July 22nd
9am - 1pm**

Please join us at the Port St. Lucie Botanical Gardens On Saturday, July 29, 2017 for a plant sale featuring Bromeliads & More...

The plant sale will begin at 9am and run through 1pm, featuring everything Bromeliads and much more. We will also be featuring a How-To Series in our Propagation area on using Bromeliads in your Landscaping and Home.

For More Information Contact
Port St. Lucie Botanical Gardens
2410 SE Westmoreland Blvd.
Port St. Lucie, FL 34952
772.337.1959
www.PSLBG.org





Friends of the Port St. Lucie
**Botanical
Gardens**

2410 SE Westmoreland Boulevard
Port Saint Lucie, FL 34952
772.337.1959

www.PSLBG.org
info@pslbotanicalgardens.org

Attention: all Civic groups, garden societies, homeowners associations, local businesses, et al. Join the Friends of the Port St. Lucie Botanical Gardens this Halloween for a public "Trick or Treat" among the trees. We need your organization to join us in this fun 2.5 hours of welcoming the Ghouls and Goblins of Port St Lucie for trick or treating and a Haunted Hayride at the Gardens in a safe, controlled, no-cars atmosphere.

Who's invited? Children, ages 0-13, in costume and their parents. **No admission - this is a free event.**

What does your group have to do? Claim table space somewhere in the Gardens, set up a table, decorate as much as you'd like, staff your table with costumed volunteers who enjoy (and perhaps miss) the joy of Halloween and the costume parade we all remember from Halloweens past. And bring lots of candy! Your organization will be responsible for having sufficient candy, snacks or treats for up to an estimated 1500 little ghouls and goblins.

Your area in the Garden is **FREE**. Your group must supply their own table. We have a limited supply of 8 ft. and 6 ft. tables available at \$25 each, first reserved, first served.

Are you an HOA, 55 and older? Miss seeing the children? Are you a City Department that would like to adopt a site to be manned by co-workers? A garden society of retired grandparents whose grandchildren are miles away, and are missed? Are you a local business that recognizes an opportunity for team building and community outreach? A civic group or club, looking for a fun, simple new event on your Fall calendar? This is an event for you!



TUESDAY • OCTOBER 31, 2017



Trick or treating will begin at 5:00 and end at 7:30 pm. Parents, accompanying their children will be required. No children without parents will be allowed on Garden property. Sunset on October 31st is 6:38 pm in Port St Lucie FYI. This is designed to be an evening/twilight event.

Please give this opportunity your attention; talk with friends and neighbors, decide to commit to this new Community event, and send us your commitment via email. Event will be advertised through the Gardens website & newsletter, on-line calendars, community radio and more.

For more Information or to register, please call Claire Clark at 772.337.1959.