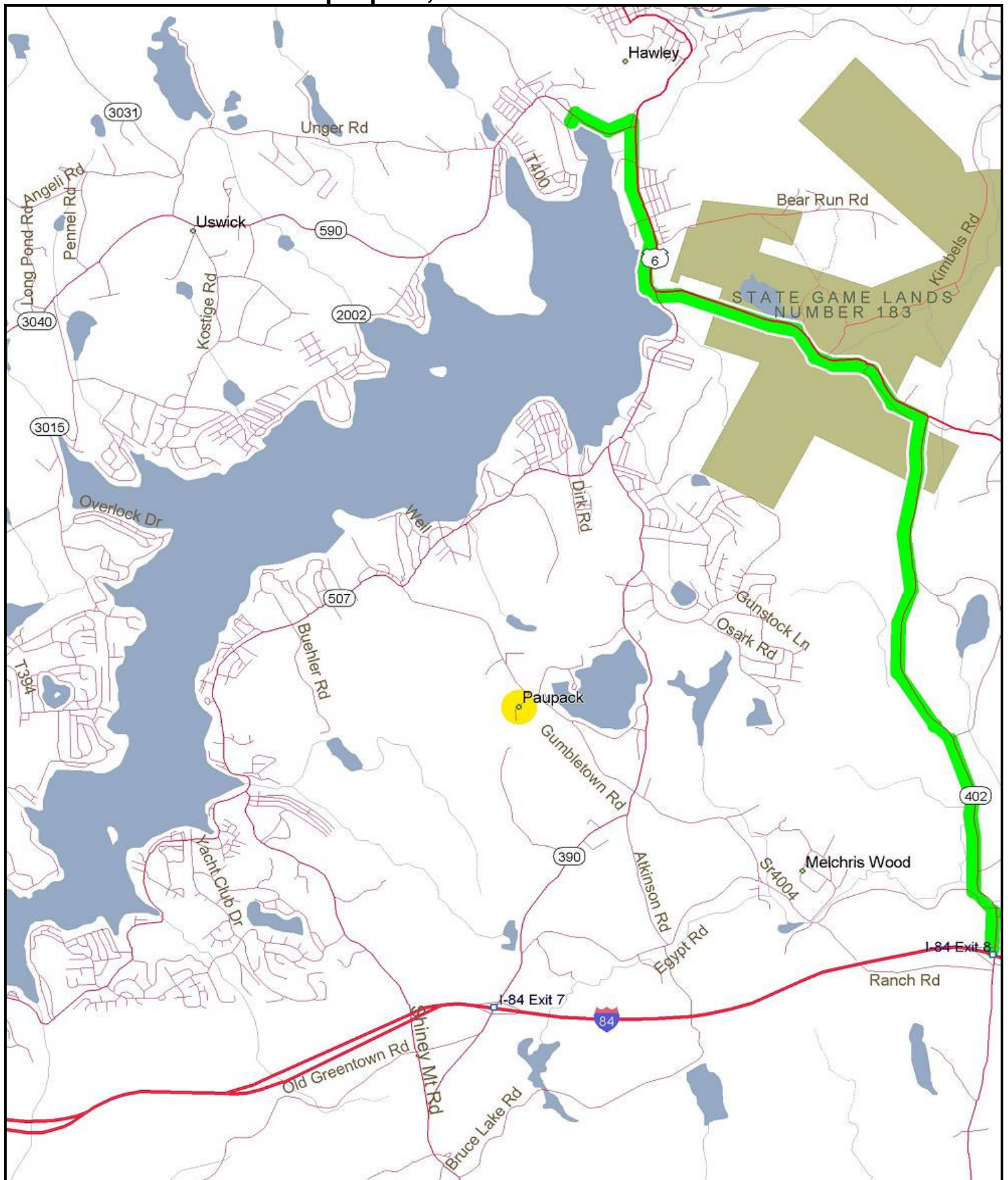


Lake Wallenpaupack, PA



Route 84 to exit 8 (route 402). North on 402 towards Hawley about 5 miles to route 6. Left on route 6 going east, about 3 miles to traffic light at intersection of route 507. Continue on route 6 to next traffic light (about 1 mile) and make left, going west on route 590. Exactly 6/10 this mile to state ramp access on left. This ramp area is usually a great place to set up.