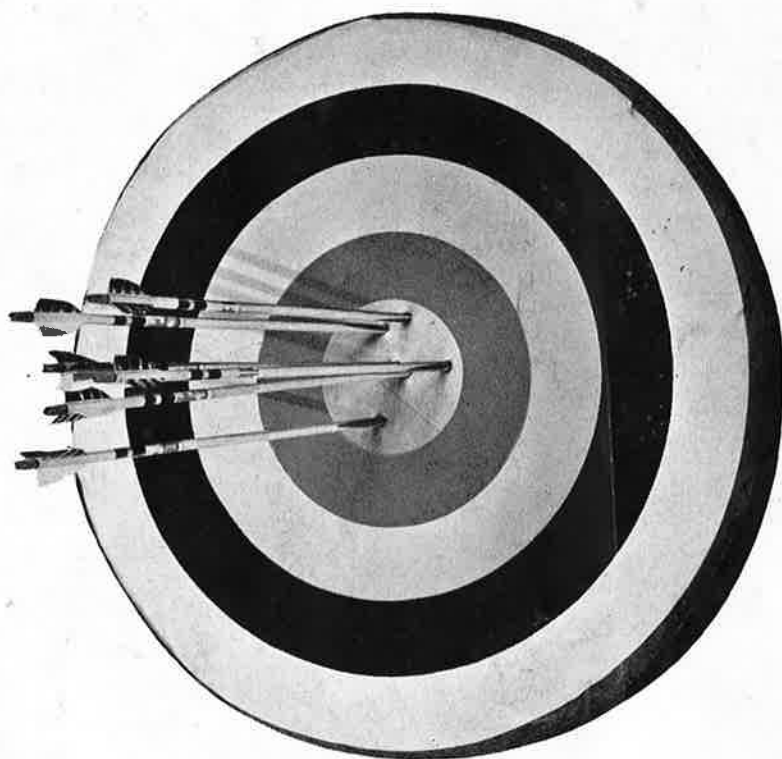


CATALOG

E-40

*Archery Equipment
and Supplies*

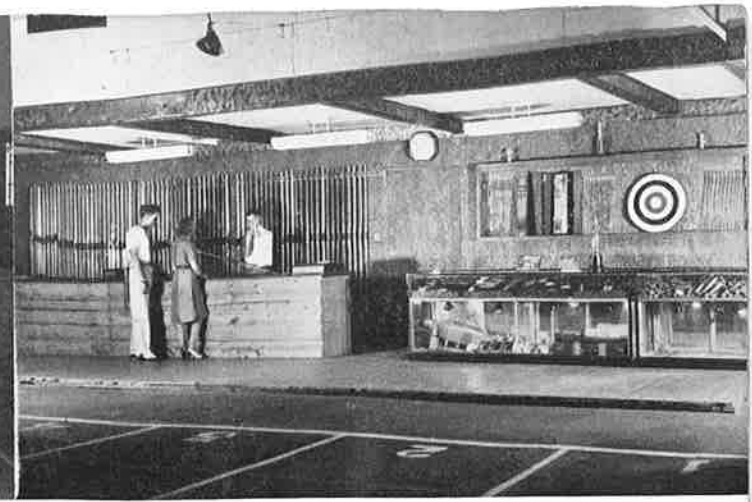
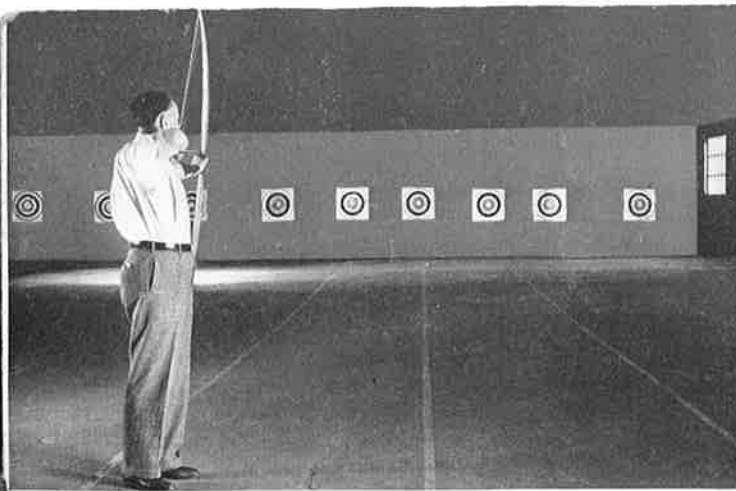


L. C. Whiffen Co., Inc.

Range Tested Equipment of Proven Merit

828 West Clybourn Street

Milwaukee, Wisconsin



We Wish You To Know

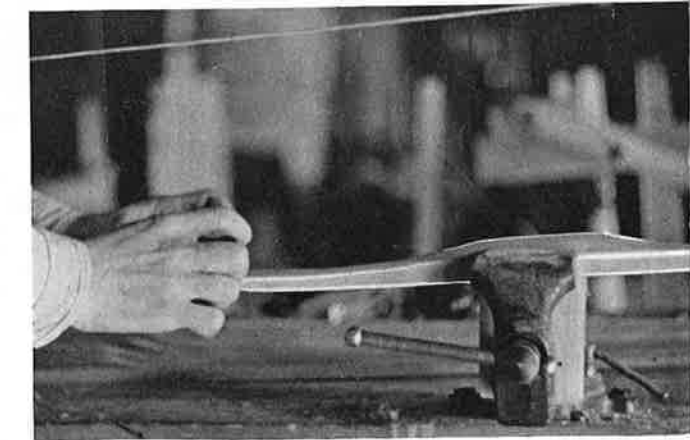
It is our desire to present through this catalogue the finest line of archery equipment manufactured, equipment that is scientifically designed to give every advantage to the archer. Smooth, fast shooting bows, precision made arrows, equipment that is capable of making championship scores, equipment that is, in fact, shot by many national champions. Not only is this equipment presented here for your selection, but it is priced to meet the demands of the conservative person, the person who has experience in the sport and knows the value of equipment that is properly designed, fashioned by the best craftsmen in the country, and finished so beautifully, that to possess it is a distinct pleasure.

It is our objective to continue always to offer these superior bows and arrows as well as the miscellaneous items which go to complete the scope of this sport. It is our further objective to satisfy all of our customers. We want you to feel that our organization represents all that you think it should when it comes to serving your archery requirements. You are important to us, we must serve you sincerely and well by assurance that in the future, as at the present, if there is any known way of improvement in service or equipment, we will be offering it to you.

L. C. WHIFFEN CO., Inc.
828 W. Clybourn St., Milwaukee, Wis.



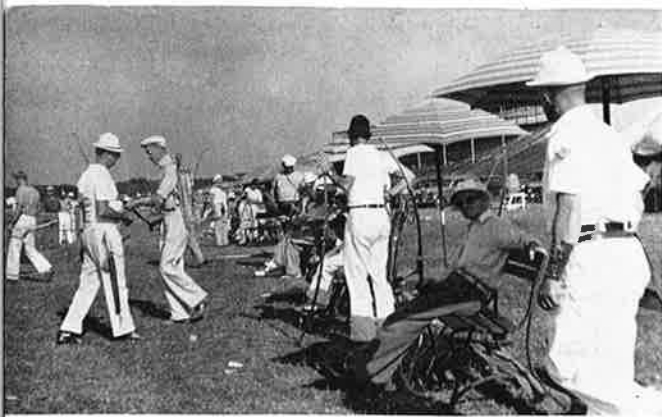
Precision Workmanship on Bow Stave



Careful Fashioning on Hand-Made Bows



Beautiful Cresting for Accurate Arrows



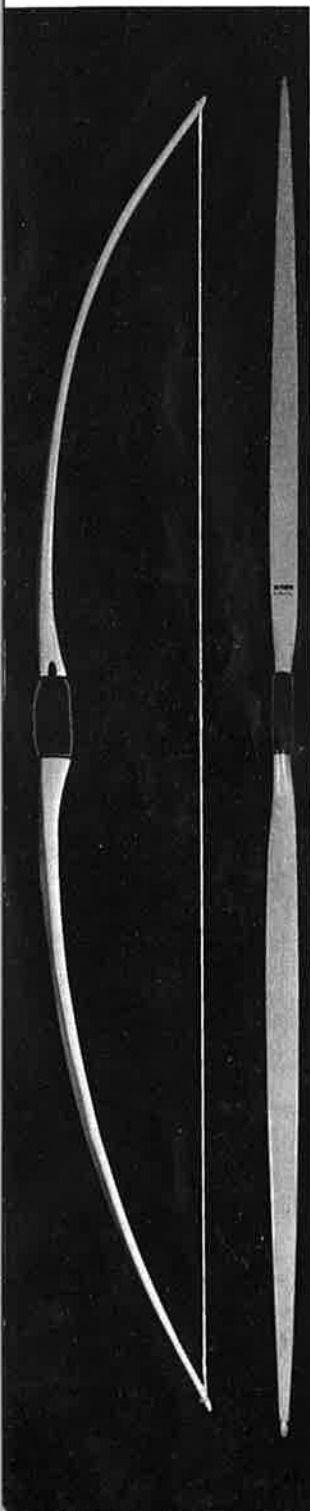
Highest Quality Tournament Bows

Last year the National Archery Association held its 59th Annual Tournament at St. Paul, Minnesota. Archers from every section of America, and sections of Canada, attended to participate in the genuine sport of tournament competition.

Of ever increasing popularity are the state, interstate, and sectional tournaments. Many cities and country clubs in America are forming archery associations, members of which participate in their own monthly and annual tournaments as well as in these sectional contests. If there is no club in your community, why not start one? You'll discover healthy, delightful sport and challenging skill in archery.



No. 901



Speed-Kast bows are designed to provide maximum cast and velvet smoothness in shooting. Engineered by expert archers who are also masters in the art of bow making, L. C. Whiffen bows are fashioned from thoroughly seasoned select stock to satisfy the needs of the most discriminating archer. Truly beautiful in design, finish, and appointments, and highly efficient in action, they provide thrills in shooting, and lasting qualities plus a pride of ownership common to all our products.

No. 901—Osage Orange Target Bows. Made of No. 1 matched Osage Orange billets. Back worked to same grain for entire length of bow. Embossed leather grip. Self nocks. Inlaid arrow plate. Equipped with best grade hand made Irish Flax bow string. Latexed, double loop. Varnish finish. Lengths 5 to 6 feet. Drawing weights to 60 pounds. In ordering state length of arrow to be used and drawing weight desired. Shipped in cloth case. Price \$30.00

Note: The following Osage Orange bows are made up same as No. 901 except changes as listed. Bows made of No. 2 staves are not to be considered as inferior. These bows perform as well and last as long as bows made from No. 1 staves.

No. 2 staves may have small knots or other slight defects, but none that prevent the making of a durable, efficient and beautiful bow.

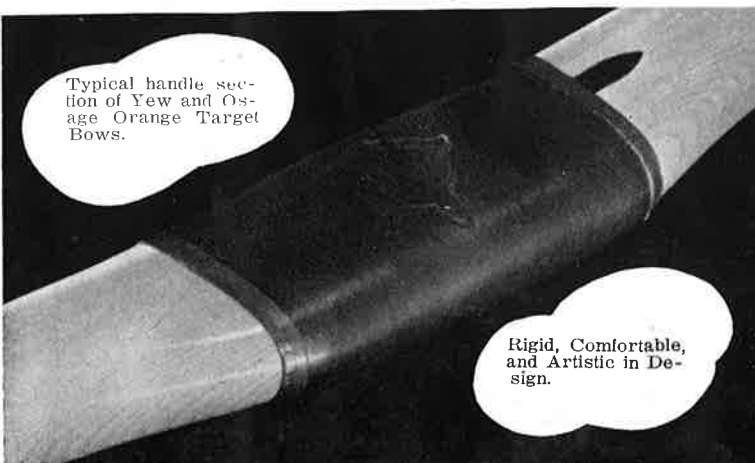
- No. 901-2 Made of No. 2 stave. Otherwise same as No. 901, \$25.00
- No. S901 Silk Backed. Otherwise same as No. 901. Price..... 35.00
- No. S901-2 Silk Backed. Made of No. 2 Stave. Price 30.00
- No. 901R Made of No. 1 Stave. Recurved ends. Price..... 35.00
- No. 901R-2 Made of No. 2 Stave. Recurved ends. Price 30.00
- No. S901R Silk Backed. Made of No. 1 Stave. Recurved. Price, 42.50
- No. S901R-2 Silk Backed. Made of No. 2 Stave. Recurved... 37.50

No. Y901 Yew Target Bows. Made of No. 1 matched yew billets. White sap back carefully worked to contour of stave. Fibre reinforced nocks. Embossed leather grip; inlaid arrow plate. Equipped with hand made Irish Flax, double loop, latexed string. Varnish finish. Lengths 5 to 6 feet. Weights to 55 pounds. In ordering, state length arrow used and drawing weight desired. Price \$30.00

Note: The following yew bows are made up same as No. Y901 except changes as listed.

- No. Y901-2 Made of No. 2 Stave. Otherwise same as Y901. \$25.00
- No. SY901 Silk Backed. Made of No. 1 Stave. Price 35.00
- No. SY901-2 Silk Backed. Made of No. 2 Stave. Price 30.00
- No. Y901R Recurved Ends. Made of No. 1 Stave. Price 35.00
- No. Y901R-2 Recurved Ends. Made of No. 2 Stave. Price 30.00
- No. SY901R Silk Backed. Recurved ends. Made of No. 1 Stave 42.50
- No. SY901R-2 Silk Backed. No. 2 Stave. Recurved ends. ... 37.50

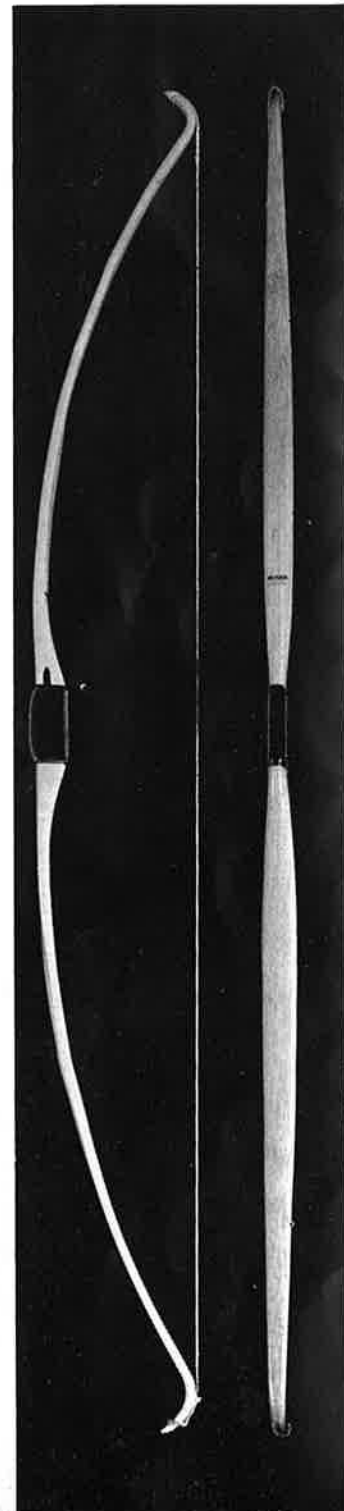
PAGE 4



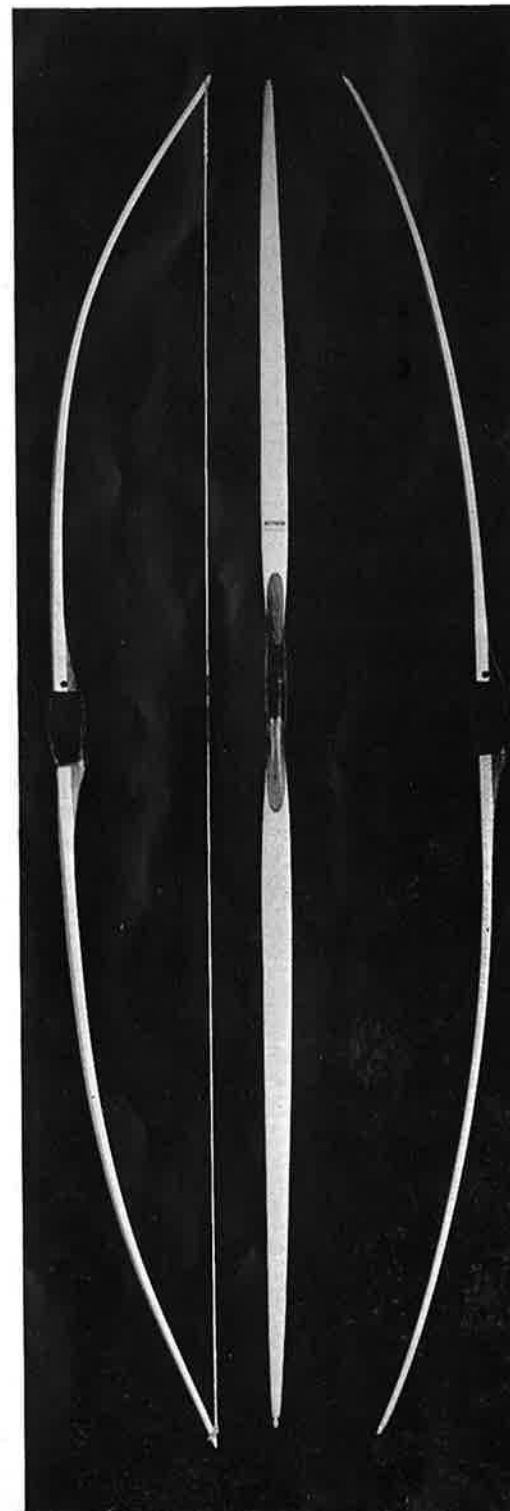
Typical handle section of Yew and Osage Orange Target Bows.

Rigid, Comfortable, and Artistic in Design.

No. Y901R



No. SL705



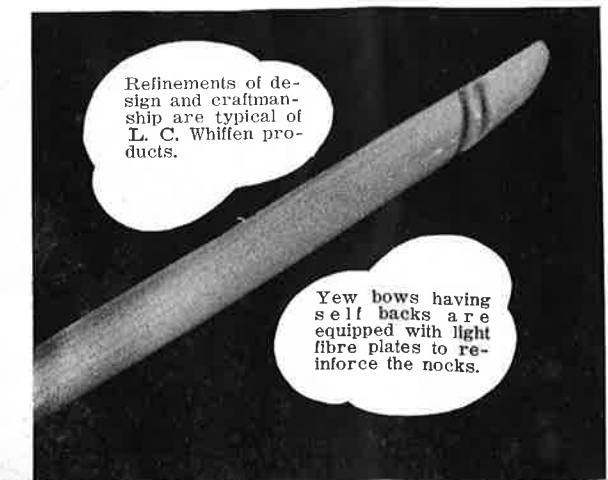
No. SL-705 Laminated Lemonwood Target Bow. A sensation in lemonwood bows. It is hard to believe a lemonwood bow can be as fast as this creation. A durable, beautiful bow that will not follow the string. Rather, the limbs actually bend backwards when the bow is unbraced. (See illustration.) Silk Back, Walnut Handle riser, inlaid arrow plate, embossed leather grip, Lay-Latex string. High grade varnish finish. For those who wish a fast, durable and beautiful bow at low cost, we heartily recommend this one. The lengths are 5 ft. 4 in. to 5 ft. 9 in. Weights to 50 pounds. Specify weight and length in ordering. Price\$15.00

No. FL-705 Same as No. SL705 except fibre backed instead of silk backed. Price\$12.50

No. S-705 Silk Backed Lemonwood Target Bow: A very practical tournament bow that shoots almost like yew. Leather grip, inlaid arrow plate, Lay-Latex string, high grade varnish finish. The lengths are 5 ft. 4 in. to 5 ft. 9 in. Weights to 50 pounds. Price \$12.50

A Tennessee archer says: "Received my bow yesterday and I am sure proud of it. Inch for inch and pound for pound I do not believe there is a better bow in the country. I would not take double its cost for it, as broke as I am." (Reference Made to 901 Osage Orange Bow.)

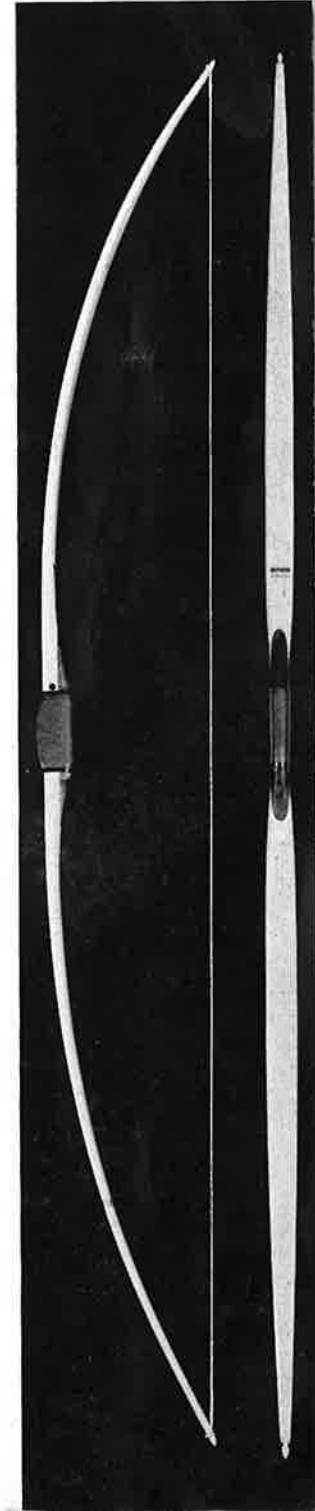
PAGE 5



Refinements of design and craftsmanship are typical of L. C. Whiffen products.

Yew bows having self backs are equipped with light fibre plates to reinforce the nocks.

No. S705





Popular Priced Tournament Bows

FOR SCHOOL AND COLLEGE CLASSES

In most of us there is an inborn "Call of the Bow" dating from antiquity. Given a good bow and shafts in our hand, we once again enter into the spirit of Chivalry and Competition which is ever-calling to us from the past. Whether we realize it or not, the most of us are archers, and to quote Maurice Thompson: "Nothing aside from death can ever quite destroy the merrry, innocent, Arcadian, heathen part of our nature, that takes to a bow and arrows as naturally as a butterfly takes to a flower."

Outstanding in the field of archery today is the fact that women of America have taken to it, not only as a delightful sport, but as one for keeping their figures trim. At most of the tournaments held throughout the country there are nearly as many women attending as men. The most common women's competitive rounds are the Columbia and National Rounds. (See page 31 for explanation of rounds.)



No. F7059

No. 6059

Lemonwood Target Bows: Only select, well-seasoned stock is used in making our line of fibre-backed and self-backed Lemonwood bows. Due to their splendid cast, durability, and beauty, L. C. Whiffen Lemonwood bows are used by club members, colleges, schools, camps, and ranges all over America.

Flat Type Self-Back Lemonwood Target Bows: Narrow deep handle, hardwood handle riser, leather grip, inlaid arrow plate, hand tillered, Lay-Latex string. (See page 29). Varnish finish.

No. 7059 Length 5 ft. 9 in., drawing weights to 45 pounds. Price \$6.00

No. 7056 Length, 5 ft. 6 in., drawing weights to 40 pounds. Price \$5.00

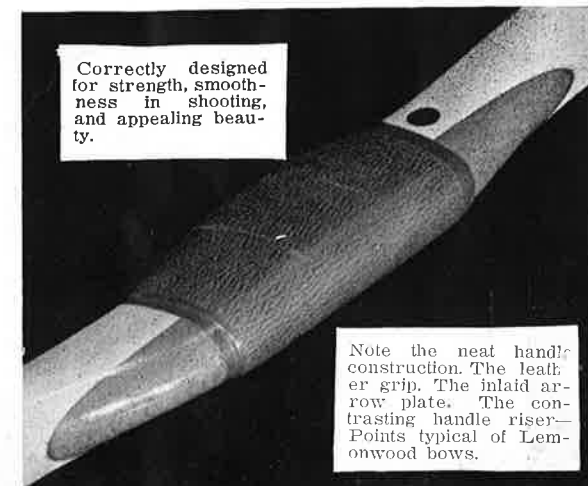
No. 7050 Length, 5 ft. 0 in., drawing weights to 25 pounds. Price \$4.00

Flat Type Fibre-Backed Lemonwood Bows: These bows are backed with fibre which adds to their beauty and provides protection against breakage. Narrow deep handle, hardwood handle riser, leather grip, inlaid arrow plate, Lay-Latex string, hand tillered, Varnish finish. In ordering, state drawing weight desired. See "How to Order Bows and Arrows," page 11.

No. F-7059 Hardwood handle riser; white fibre back; length, 5 ft. 9 in.; drawing weights to 50 pounds. Price \$7.50

No. F-7056 Hardwood handle riser; white fibre back; length, 5 ft. 6 in.; drawing weights to 45 pounds. Price \$6.25

PAGE 6

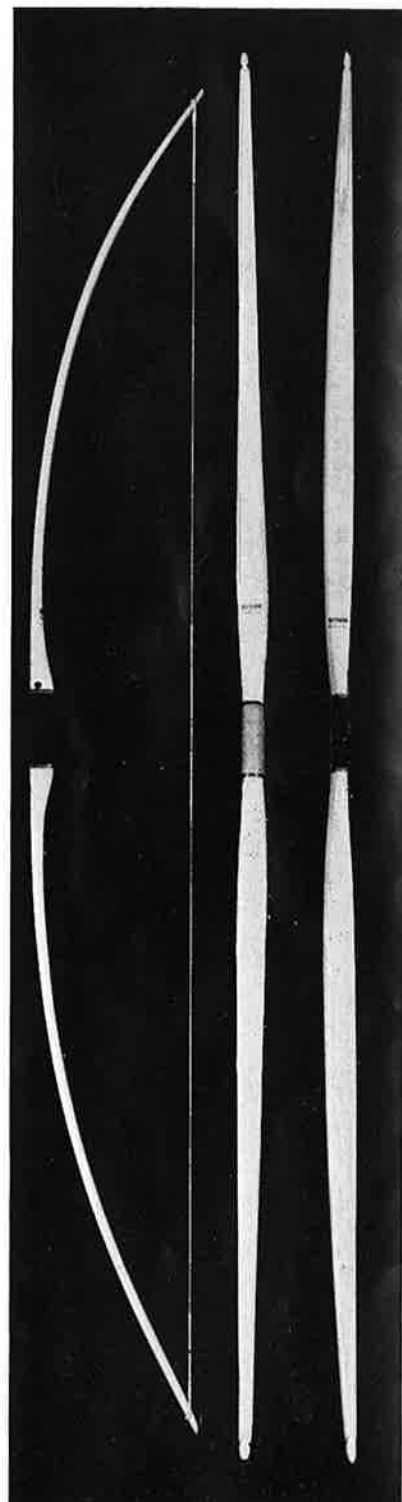


Correctly designed for strength, smoothness in shooting, and appealing beauty.

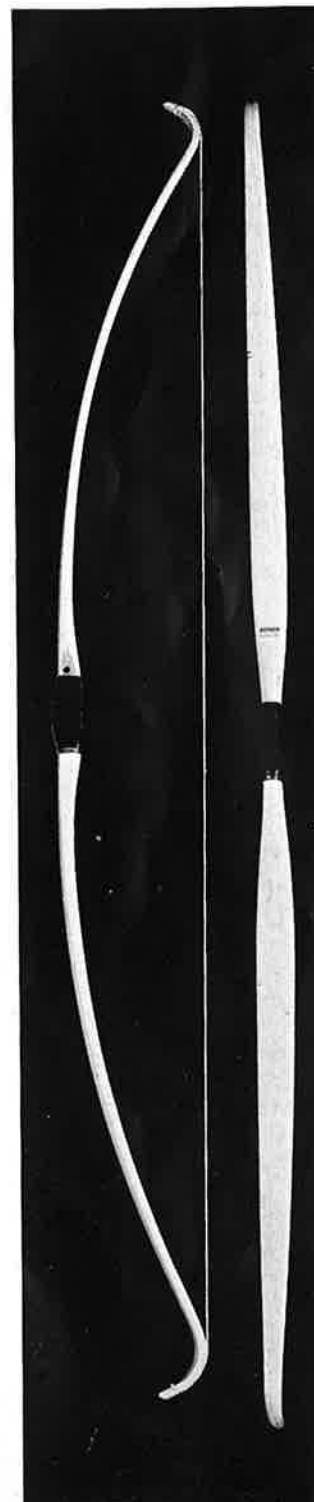
Note the neat handly construction. The leather grip. The inlaid arrow plate. The contrasting handle riser. Points typical of Lemonwood bows.

No. 501

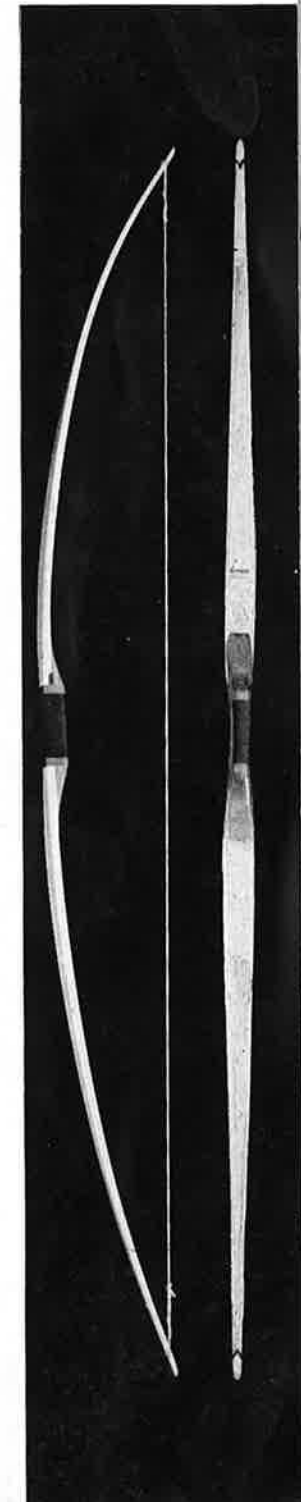
No. 505



No. 509



No. 500



FLAT TYPE FIBRE-BACKED LEMONWOOD BOWS—(Continued)

No. F-7050 Hardwood handle riser; red fibre back; length, 5 ft.; drawing weights to 30 pounds. Price \$5.00

No. F-7046 For Juveniles. Hardwood handle riser; red fibre back; length, 4 ft. 6 in., drawing weights 15 to 20 pounds. Price \$3.50

No. F-7040 For Juveniles. Hardwood handle riser; red fibre back; length, 4 ft.; drawing weights 10 to 16 pounds. Price \$3.00

Semi-Flat Type Self-Back Lemonwood Bows: A very practical inexpensive target bow. Nicely finished with Varnish. Leather grip, handle riser of hardwood. Lay-Latex string. Inlaid arrow plate.

No. 6059 Length, 5 ft. 9 in., drawing weights to 40 pounds. Price, \$5.00

No. 6056 Length, 5 ft. 6 in., drawing weights to 40 pounds. Price, \$4.00

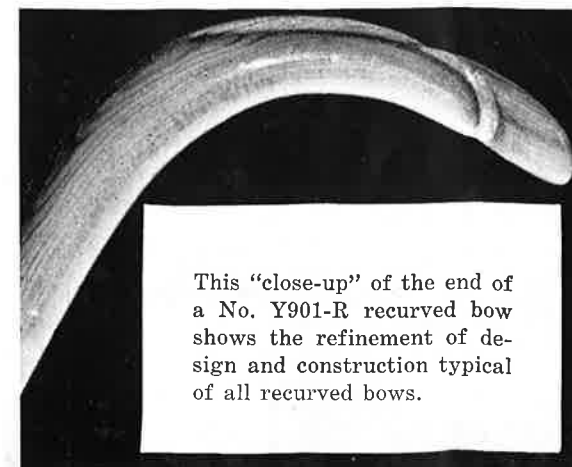
No. 505 Hickory Target Bow: Made of well-seasoned, carefully selected hickory. Extra wide, flat type. Leather grip, Lay-Latex string; (see page 29) inlaid arrow plate. Perfectly tillered, nicely finished with varnish. A splendid hard shooting bow that will stand lots of rough treatment. Length, 5 ft., 6 in., drawing weights to 50 lbs. Price, \$5.00

No. 509 Hickory Target Bow: A remarkably good shooting bow. Strikingly beautiful. Recurved ends as illustrated. Otherwise same as No. 505. Length, 5 ft. 6 in., drawing weights to 50 pounds. \$7.00.

No. 501 Hickory Target Bow: Made of well-seasoned select hickory. Flat type, but not as wide as Nos. 505 and 509. Perfectly tillered, leather grip, Lay-Latex string. Inlaid arrow plate, nicely finished with varnish. Length, 5 ft. 6 in., drawing weights to 40 pounds. Price \$3.75

No. 500 Hickory Bow for Juveniles: Flat type. Handle riser of contrasting wood. Attractive handle and arrow plate. Hemp string. Varnish finish. Length, 5 ft., drawing weights to 30 pounds. Price, \$1.75.

PAGE 7



This "close-up" of the end of a No. Y901-R recurved bow shows the refinement of design and construction typical of all recurved bows.



Highest Quality Tournament Arrows

"THE TRU - FLITE LINE"

Anchoring the drawing hand against the jaw while aiming is one of the important points for good shooting form. As can be seen by this photograph the archer in full-drawn position is intent upon the aiming of his arrow and has firmly steadied his hand against the jawbone.



No. 309



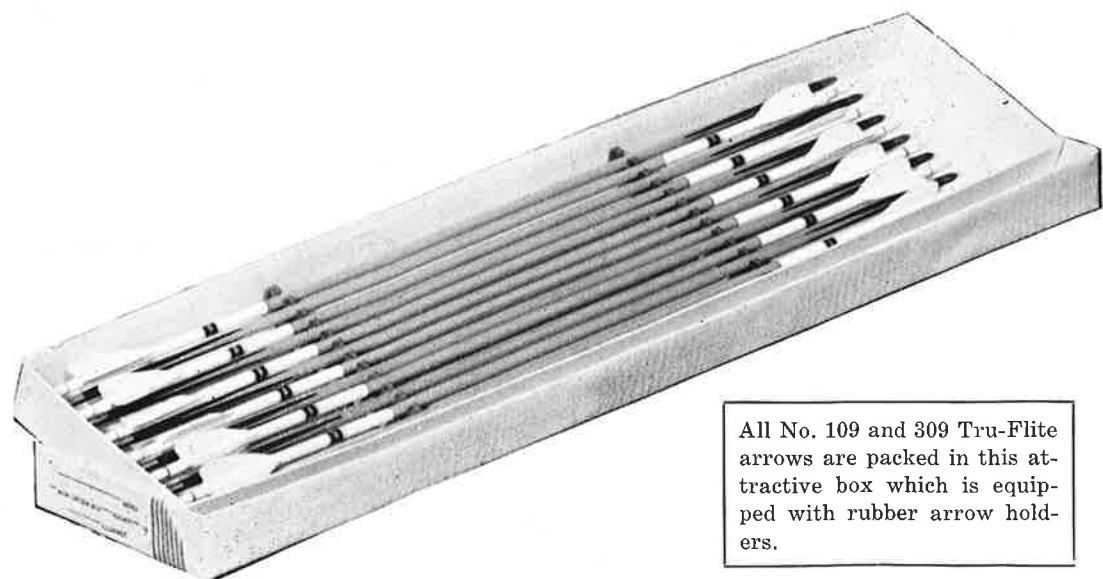
Moulded Pyrolin Nocks: 1/4-inch for use with average weight bows. 7/32-inch for use with light weight bows.

Perfect, m a t c h e d fletching in colors desired.

Crested in design and colors desired. Painted between vanes.

The archer's marksmanship can be no better than the arrow he shoots. Realizing this we strive, always, to produce the very best arrows that money can buy. Materials must be the best obtainable. To assure this we buy selected Port Orford Cedar in rail car lots; likewise, select split-bolt Northern birch is bought in car load lots. Even feathers for fletching are bought in car load lots! Thus at all times we are assured of the very best selection of raw materials for making precision target and hunting arrows. This, coupled with our

knowledge of the requisites for precision arrows, and our corps of expert craftsmen using precision equipment and working with the attitude that arrows must be comparable in workmanship to that of a fine rifle, enables us to produce "Arrows of Excellence." Our success in this is attested to by the ever increasing number of tournaments being won each year with L. C. Whiffen arrows and by the numerous letters of praise we are continually receiving from our customers throughout the nation.



All No. 109 and 309 Tru-Flite arrows are packed in this attractive box which is equipped with rubber arrow holders.

No. 109
PAGE 8

No. 309



Very select, straight grained, Port Orford Cedar shaft. Barrelled construction. High grade Lacquer finish.

Footed with the famous black hickory footing. A perfect four point splice, glued to stay. The most durable footing known.

Equipped with our perfection steel pyle, 1/4 in. diameter for average weight bows and 7/32 in. diameter for light weight bows.

No. 309 Footed Tru-Flite Arrow. Flight tested. This arrow, illustrated above, is especially recommended for accurate long range shooting, but is practical for the short ranges as well and represents the very finest in material and workmanship. Its barrelled, streamlined construction affords an arrow that is exceptionally light, yet strong and sturdy, and one that flies perfectly true without fliriting. A 27 in. arrow for a 45-pound bow weighs approximately 290 grains. Perfectly balanced. Matched to 3 grains in weight. Closely matched in spine. State drawing length, and the drawing weight of your bow; also, color and design of crest and color feathers desired. See "How to Order L. C. Whiffen Bows and Arrows" page 11. Packed in an attractive box. Price\$15.00 Doz.

No. 109 Footed Tru-Flite Arrow. Flight tested. Illustrated at bottom of this page and on opposite page. Made of finest selection of stock. A very practical sturdy arrow for all round tournament shooting. Beautifully finished. Crested as desired. Steel parallel pyles, pyrolin nocks. Matched to 3 grains in weight. Closely matched in spine. Used by champion archers throughout America. State drawing length, weight bow and preference of feathers and crest. Packed in attractive box. Price\$12.50 Doz.

No. B-109 Same as No. 109 except footed with Beefwood. Price\$12.50 Doz.

Equipped with perfection points. Extra50



No. 209

No. 209 Self Tru-Flite Arrows. Made of the finest Port Orford Cedar; Pyrolin nocks in color desired. Parallel steel pyles. Perfect fletching in colors desired. Matched to within 3 grains in weight. Closely matched

in spine. Beautifully finished. Crested in colors desired. State drawing length and weight bow.

Price\$7.50 Doz.

Equipped with perfection points. Extra50



No. M-210

Aluminum Alloy Arrows. With the benefit of fifteen years experience with Aluminum Alloy Arrows at our command, we are able to select materials and build the best of this type ever offered.

We do not consider that metal competes with wood as an arrow material. Each has its advantages. We recognize the advantage of our tempered aluminum in its resistance to severe weather conditions and atmospheric changes, and are fully aware that top scores may be made with properly designed metals as well as with wood.

In common with all L. C. Whiffen arrows, the two sizes of metals which we offer are correctly designed and properly made.

M-210. 9/32 in. diameter, 300 grains in 27-inch length, 3 in. insert footing standard (other lengths to order) pyrolin nocks, preference of cresting and fletching. The standard weight will perform well on average bow up to 55 lbs. Any length to order. Price\$9.00 Doz.

M-212, 1/4 in. diameter, 230 grains, 27-inch length. Standard 2 in. insert footing. Pyrolin nocks, preference of cresting, low feather fletching. Any length to order.

Price\$9.00 Doz.

This is a fine light weight arrow for ladies and for men who shoot 40-pound bows and under.



No. 109
PAGE 9



Popular Priced Target Arrows

“THE COLLEGIATE LINE”

As can be seen from the group of arrows in the target, these four archers know how to shoot them “Down the old alley.” This group proves what can be done with matched arrows from a distance of 40 yards. This target is four feet in diameter with a 9.6 inch bull’s-eye.

These archers are shooting the “Pope-Young Round.” This is a popular round and represents but one of the many different events shot after or before the regular tournament rounds have been finished. This particular round is unusually good for improving an archer’s hunting skill since snap shooting or aiming by instinct is used instead of the usual point of aim or bow sight.



SPECIAL FLETCHING—CRESTING OR LENGTHS OTHER THAN SPECIFIED ON STOCK ARROWS

SHOWN ON THESE TWO PAGES ADD 25c PER DOZEN EACH OPERATION TO CATALOGUE PRICE.



No. 105

No. 105 Matched Footed Arrow. A stock arrow made of select Port Orford Cedar equipped with our famous black Hickory footing or beefwood footing. Four-point splice. Pyrolin nocks. Brass parallel pyles. Matched in spine and to within 10 grains in weight. Perfectly fletched with natural or colored barred feathers, stock

crest only. Beautifully finished. For those wishing a durable arrow, capable of excellent scores, at a low price, this arrow is unexcelled. Made in 24, 25, 26, 27 and 28-inch lengths only. State drawing length and weight bow \$7.50 Doz.
No. B-105—Same, except beefwood footing, \$7.50 Doz.



No. 103

No. 103 Footed Arrow: For those wishing an inexpensive practice arrow that is durable and capable of fair scores, we recommend this one. Not matched, but there are no extremely wide variations in weight or spine.

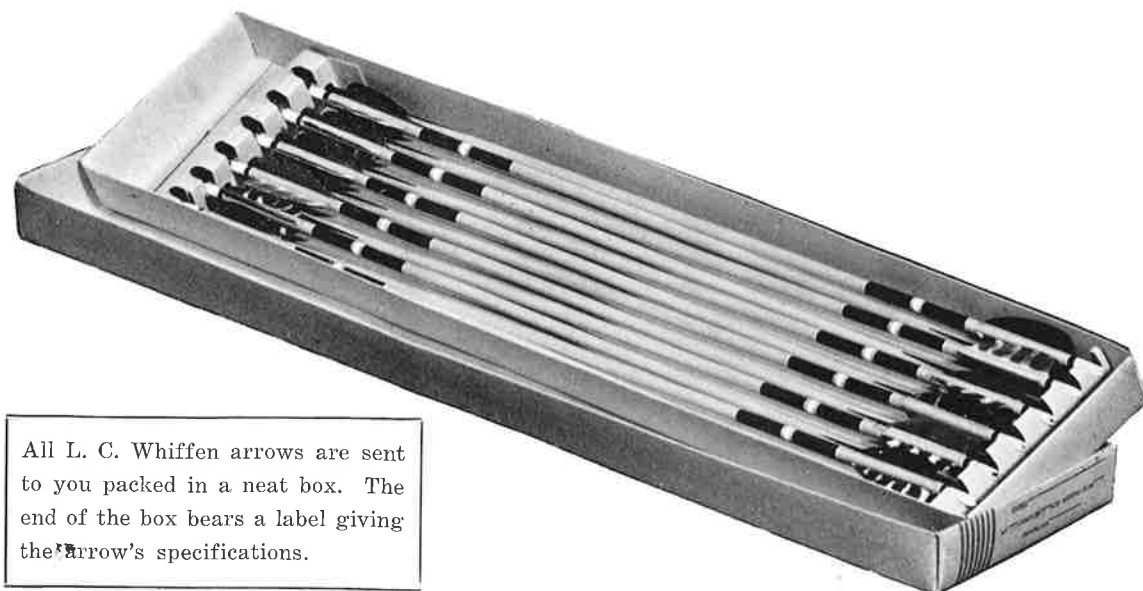
Durable, hardwood footing. Brass parallel pyles. Natural barred feathers. Pyralin nocks. Stock crested. Nicely finished. Made in 5/16-inch diameter for 26, 27 and 28-inch lengths. 9/32-inch for 24 and 25-inch lengths. State drawing length desired. Price \$5.50 Doz.



No. 203

No. 203 Self Birch Arrows—Matched: An excellent practice arrow. Made of select split birch. Each arrow of the same dozen from the same unit of stock. Matched to 15 grains in weight. Fletched with barred feathers. Brass parallel pyles. Made in 5/16-inch diameter for

26, 27 and 28-inch lengths. 9/32-inch for 24 and 25-inch lengths. Nicely finished. Stock crested. A very practical arrow for schools, commercial ranges, etc. And capable of excellent scores. State length desired. Price \$4.50 Doz.



All L. C. Whiffen arrows are sent to you packed in a neat box. The end of the box bears a label giving the arrow's specifications.



No. 207

No. 207 Self Arrow: Made of select Port Orford Cedar. Pyrolin nocks; fletched with barred or colored barred feathers. Stock crested only. Parallel brass pyles. Nicely finished. 24, 25, 26, 27 and 28-inch lengths only. 24

and 25-inch lengths are 9/32 in. diameter. Longer lengths are 5/16 in. diameter. Price \$3.75 Doz.
No. 207-F Same as No. 207 except equipped with fibre insert nocks instead of Pyrolin nocks. Price, \$3.65 Doz.



No. 205

No. 205 Self Arrow: A sturdy well-made Port Orford Cedar arrow. Self nocks. Brass parallel pyles. Well-fletched with barred feathers. Stock crested. 5/16 in.

size only. 24, 25, 26, 27 and 28-inch lengths only. Price \$3.00 Doz.
Packed one gross to box. Price \$2.75 Doz.



No. 201

No. 201 Self Birch Arrow: Made of well-seasoned birch dowels. An inexpensive arrow that will stand lots of rough treatment. 5/16 in. size only. Brass parallel py-

les. Barred feathers. 24, 25, 26, 27 and 28-inch lengths only. Stock crested. Price \$2.25 Doz.
Packed one gross to box. Price \$2.00 Doz.

How to Order Bows and Arrows.

Bows: Give catalogue number, length bow, arrow length and pounds pull desired.

Note: The proper length bow is dependent more or less upon the arrow length the individual uses and not necessarily upon the height of the archer. See table below to determine the proper length bow for your drawing length.

Note: The bow's length is considered as being the distance between the string nocks as measured along the back of the bow.

Arrows: Give catalogue number and drawing length. The drawing length is determined by measuring from the bottom of the nock to the shoulder of the pyle. See sketch. Also state the pounds pull (at full draw) of the bow with which your arrows are to be used. This is important as it enables us to send arrows that are spined to perform properly with your bow. Avoid specifying the diameter of your arrows since this depends upon the length of arrow, the weight of bow and the character of the wood. If we are furnished with the arrow length and the correct weight of your bow, you may be assured that you will receive arrows correctly engineered, that will perform to a perfection consistent with the class arrows you are ordering. Specify colors and design for crest or if you do not wish to specify these we will send arrows having crest of pleasing and artistic design. Note that some arrows are listed as being stock crested. With these you have no preference

as to color or design since these arrows are made up in advance for our stock. Note some are listed as being fletched with barred or with colored barred feathers only. We cannot deviate from this without making extra charges. Barred feathers are not inferior to whites or blacks, but are more plentiful hence it is necessary that we use these on the arrows we make in large volume, and save the whites and blacks for arrows fletched with an optional choice of feathers. Some archers prefer the barred feathers to all others on the best tournament arrow because of their excellent lasting qualities.

Proper arrow length depends on the physical measurements of the individual and efficient bow length depends on the length arrow. Use these tables and diagrams to determine proper equipment for your individual use.

Spread-measurement to determine suitable arrow length:

Spread	Arrow Length
48-50 inches	19-20 inches
51-53 inches	21-22 inches
54-56 inches	22-23 inches
57-59 inches	23-24 inches
60-62 inches	24-25 inches
63-65 inches	25-26 inches
66-68 inches	26-27 inches
69-71 inches	27-28 inches
72-74 inches	29-30 inches

Suggested ratio arrow length to target bow length:

Arrow length	Bow length
20 inches	Not under 4 ft.
22 inches	Not under 4 ft. 6 inches
25 inches	Not under 5 ft.
27 inches	Not under 5 ft. 6 inches
28 inches	Not under 5 ft. 8 inches
30 inches	Not under 6 ft.



Spread Measurement



Drawing Length



Hunting Equipment

Hunting with bow and arrows is fast becoming popular in many states of the Union. This black bear was shot by a modern Robin Hood in California and represents an almost common achievement for archers who know their hunting bow and arrows. Stronger bows and special hunting arrows with steel broadheads are used for large game. Many states have set up special archery game areas for hunting or have declared special pre-seasonal privileges for archers. The archer—Mr. Delbert W. Luttrell of Dunsuir, California.

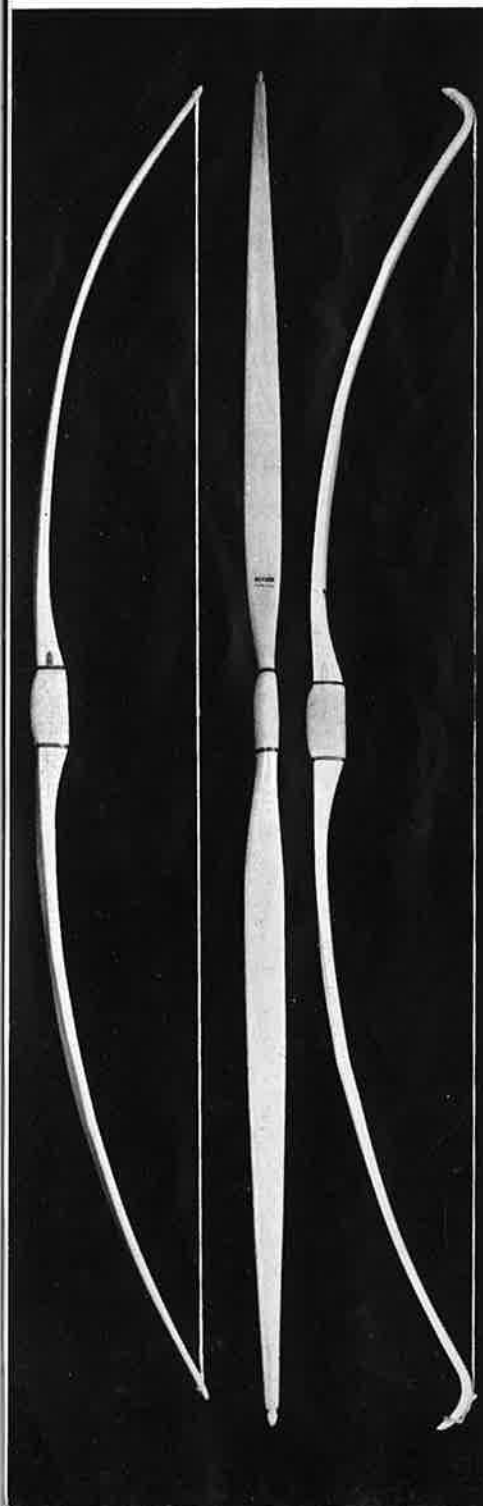
Flight Equipment

It was a bad day for this bear when he climbed into an apple tree in a Washington orchard. Like the little sparrow in "Cock Robin," this little boy (Sonny Johns, fifteen, of Tacoma) killed Mr. Bear with his trusty bow and arrow, as you can readily see for yourself in this authentic photograph . . . What boy in America wouldn't be proud to have a bearskin rug acquired by himself with a bow and arrow? Sonny is also a National figure in target archery having won the National Junior Championship and numerous sectional tournaments.



No. 902

No. 902R



L. C. Whiffen hunting Bows are made of the very finest selection of materials. They are built rugged to withstand the rough usage of hunting under varying conditions. Their wide flat design and perfect tillering permit a short bow if desired and one that shoots with exceptionally fast speed. Tough leather grip, inlaid arrow plate, self nocks, Lay-Latex string, and dull water-proof finish are features common to all our Hunting Bows.

No. 902 Osage Orange Hunting Bow. Self back, 5 ft. 3 in. to 5 ft. 8 in. long; drawing weights to 75 pounds. Price \$32.50

No. 902-R Same as No. 902 except recurved ends. Price \$37.50

No. SY902 Yew Hunting Bow. Silk backed, straight ends, 5 ft. 3 in. to 5 ft. 8 in. long, weights to 75 pounds. Price \$37.50

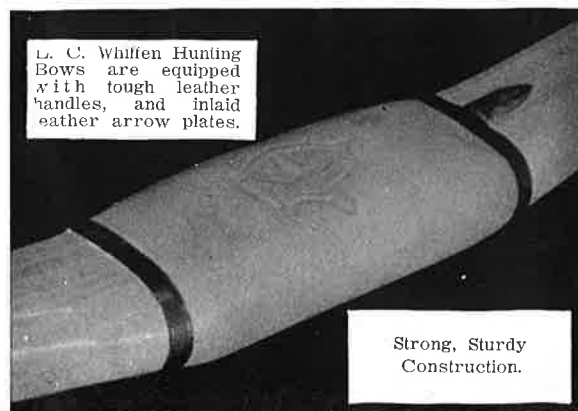
No. SY902-R Same as SY902 except recurved. Price \$45.00

No. RY902 Yew Hunting Bow. Rawhide back. 5 ft. 4 in. to 5 ft. 8 in. in length, drawing weight to 75 pounds. Price \$32.50

No. RY902-R Same as No. RY902 except recurved. Price \$37.50

No. S702 Lemonwood Hunting Bow. Silk backed. A very practical hunting bow at low cost. 5 ft. 6 in. long; wide, flat-type, drawing weights to 65 pounds. Price \$15.00

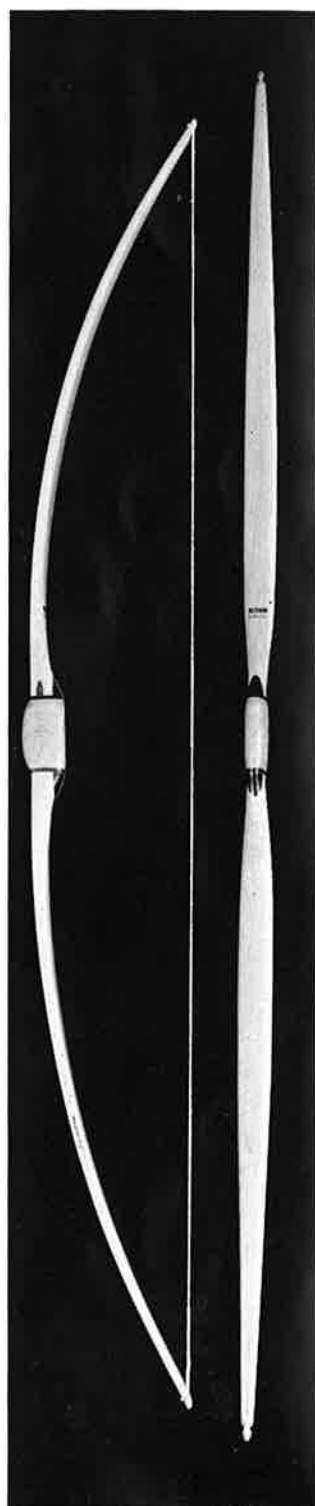
PAGE 12



L. C. Whiffen Hunting Bows are equipped with tough leather handles, and inlaid leather arrow plates.

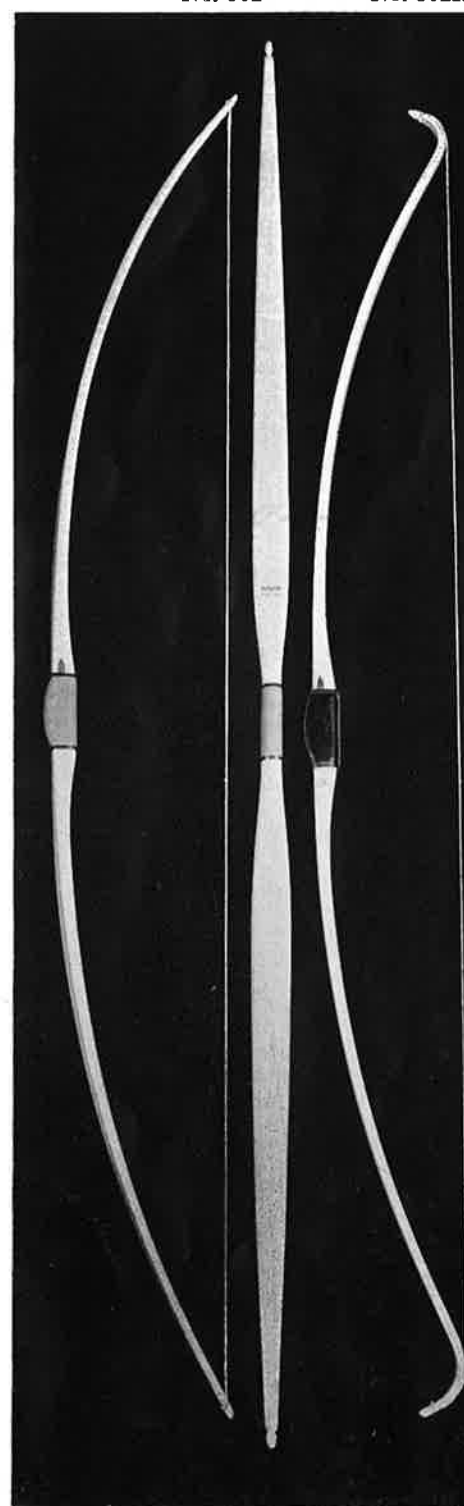
Strong, Sturdy Construction.

No. S702



No. 502

No. 502R



No. 502 Hickory Hunting Bow. Extra wide flat construction. 5 ft. 6 in. long. Drawing weights to 65 pounds. An inexpensive bow, not easy to break. Leather grip, inlaid leather arrow plate. Lay-Latex string. (See page 29). Price \$5.50

No. 502-R Hickory Hunting Bow. Same as No. 502 except recurved. Price \$7.50

FLIGHT BOWS

L. C. Whiffen Flight Bows are correctly designed and fashioned from first quality materials. You will be delighted with the excellency of these bows.

No. 909-R Flight Bow: Made of Osage Orange, sharply recurved, silk backed, padded arrow rest and plate. Leather grip, thin Lay-Latex string, 4 ft. 8 in. to 5 ft. long. Price, to 75 pounds \$35.00

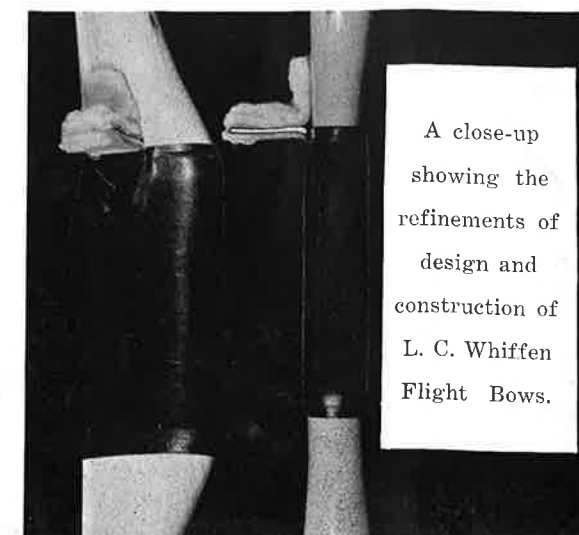
No. Y909-R Flight Bow: Same as No. 909-R except made of yew; weights to 75 pounds. Price \$35.00

For Sinew Backing on either of above bows. Extra \$5.00

No. 301 Flight Arrow: A self arrow made of extra select Port Orford Cedar. Fitted with 1/4 in. or 9/32 in. pyrolin nock and 9/32 in., 1/4 in., or 7/32 in. pyle. Size depends on weight of bow. Barrelled to a degree depending on weight bow, and fletched with celluloid vanes, smooth light finish. State arrow length desired and weight of bow. Not crested. (See page 17 for illustration). Price, each \$1.00

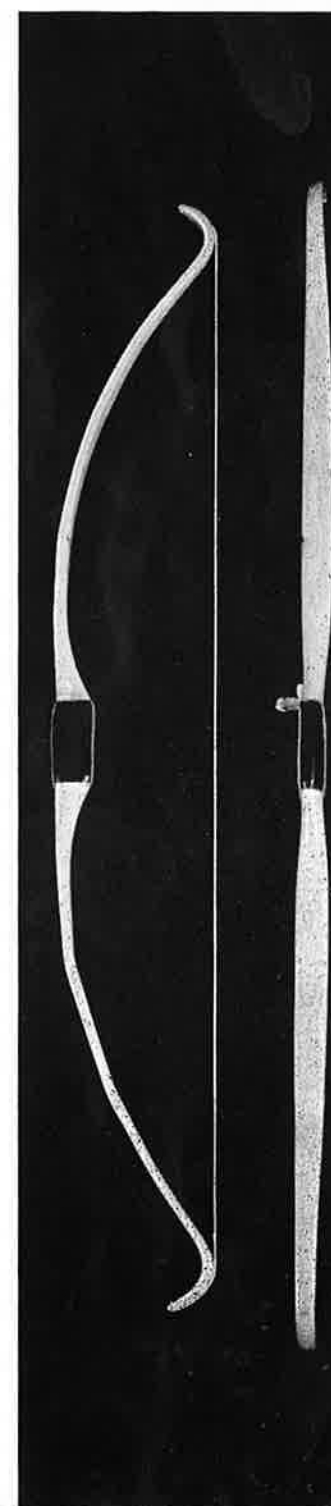
No. F301 Flight Arrow: Footed with short black Hickory footing otherwise same as No. 301. State length arrow desired and weight of bow. Price, each \$1.25

PAGE 13



A close-up showing the refinements of design and construction of L. C. Whiffen Flight Bows.

No. Y909R



Hunting Equipment

Hunting and killing mountain lions in California with a bow, quiver of arrows and hound is nothing new for this sportsman—Major Harry D. Cranston of Pasadena, California. He has piled up an enviable record of big game killed with bow and arrows. Many sportsmen throughout America would like to emulate this achievement—even with a gun . . . For the thrill of thrills in outdoor sport, hunt with a bow and arrow.

HUNTING ARROWS

There is ever an increasing interest in field archery with an increasing demand for quality equipment at popular prices. All birch arrows listed on this page are made of extra select, straight grained hand-split bolts of Northern birch. All arrows of the same dozen are made from the same unit of stock. No better hunting or field arrows than these are found anywhere, at any price.



No. 200

No. 200 Broadhead Birch Hunting Arrow: A very durable, accurate hunting arrow suitable for taking any game found on the American Continent. Furnished in 11/32 in. or 3/8 in. size, according to weight bow. Matched to 15 grains in weight. No great variation in spine. Perfect slightly spiralled fletching, barred feathers. Nicely finished and painted. Equipped with barbed broadhead as illustrated or with barbless head as shown at No. BH-2 or BH-3, opposite page. State drawing

length, bow weight, and broadhead desired. Price\$5.50 Doz.

No. PO-200 Same as No. 200 except made of finest selection Port Orford Cedar. Fibre insert nocks. A light precision arrow. State length draw, bow weight and broadhead desired. Price\$5.75 Doz.

No. PO-200-F Same as PO-200 except footed with black hickory and matched to 15 grains. Price\$7.50 Doz.



No. 202

No. 202 Roving Arrow. Shooting stumps, tin cans, or other inviting objects is a fascinating sport and is very excellent practice for game hunting. These roving arrows are extremely durable and well adapted for this type of shooting. They, also, are excellent for shooting squirrels, gophers, or other small game. Made of tough straight-grained Northern birch and equipped with blunt steel head as illustrated. 11/32 in. or 3/8 in. sizes, according to weight of your bow. State drawing length

and bow weight. Price.....\$4.00 Doz.

No. S-200 Hunting Arrow Set: One dozen No. 200 broadhead hunting arrows and one dozen No. 202 roving arrows. All made of the same unit of select Northern birch stock and matched to within 15 grains in weight. Roving head and broadhead weighing the same. State drawing length and weight bow. Price for the 2 dozen arrows\$10.50



No. 204

No. 204 Fish Arrow: Made of birch. Same as No. 200 except equipped with extra slender head as illustrated.

See opposite page for instructions for attaching line, line holder, etc. Price.....\$5.75 Doz.



No. 206

No. 206 Fish Arrow: 3/8 in. birch arrow. Same as No. 200 except equipped with strong, 5-prong steel gig. A

real fish getter. State drawing length. Price each, \$2.25
No. 206-3 Equipped with 3-prong steel gig. Each. \$2.00



No. 208

No. 208 Deep-Sea-Fish Arrow: 3/8-inch birch arrow equipped with harpoon head as illustrated. Barbs spread when pull is exerted on line. An excellent arrow for

shooting large fish. Use a fairly heavy bow and good line. State drawing length desired. Price each\$2.50

Hunting Accessories

Here's a new thrill for fishermen! Shoot fish with a bow and arrow! . . . For the beginner, shooting the bow and arrow at this close range soon becomes easy and he can expect new thrills within a few days of practice shooting. A line is tied to the head of the arrow and then run the length of the arrow and tied at the nock. This enables the archer to pull in the catch after it has been shot. The archer here is shooting gar fish in an Arkansas lake. The gar is a rough and undesirable fish in Southern waters. (Consult local game and fish laws before shooting fresh-water fish).

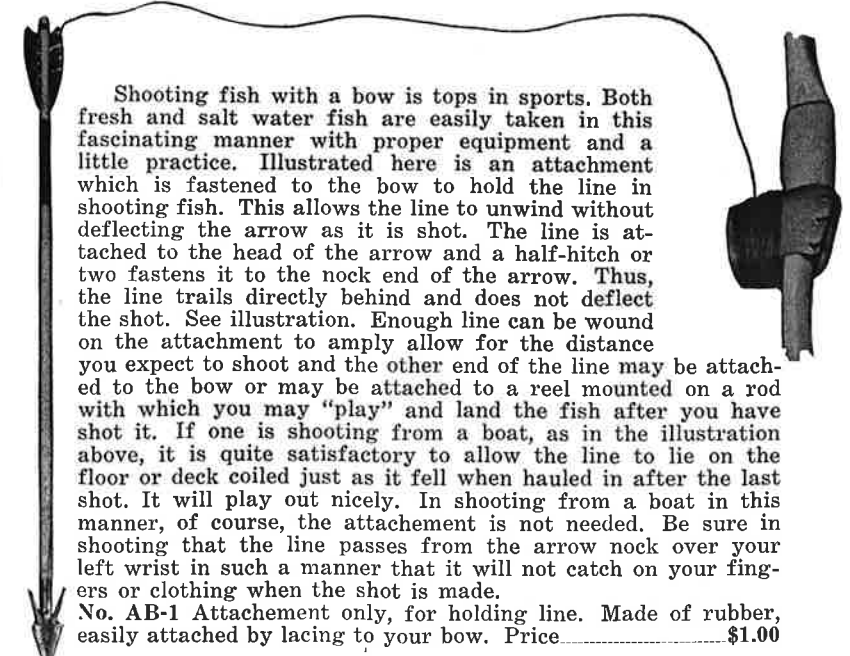


Our patented one piece steel broadheads answer a long felt need for a practical efficient, light head at moderate price. They are accurately made of high-grade steel, fly true, and due to their special design, have remarkable penetrating power. We receive numerous letters attesting to the excellent qualities of penetration and durability of these arrow heads. They fit any size shaft and are furnished in sizes and shapes as illustrated. The popularity of this broadhead is thoroughly demonstrated by the fact that we sold over 20,000 in 1939.

Order by Number:

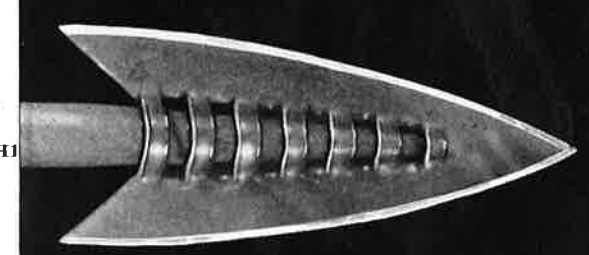
No. BH-1, BH-2, BH-3.....\$1.50 Doz.

Testimonial: "I have received the samples of your new arrow heads. I think they are excellent, and I believe you have an arrow head that will be used universally."

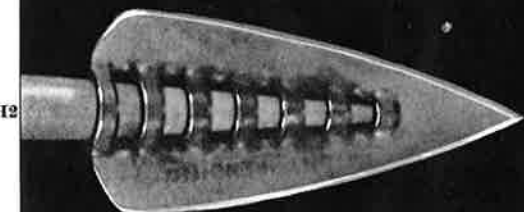


Shooting fish with a bow is tops in sports. Both fresh and salt water fish are easily taken in this fascinating manner with proper equipment and a little practice. Illustrated here is an attachment which is fastened to the bow to hold the line in shooting fish. This allows the line to unwind without deflecting the arrow as it is shot. The line is attached to the head of the arrow and a half-hitch or two fastens it to the nock end of the arrow. Thus, the line trails directly behind and does not deflect the shot. See illustration. Enough line can be wound on the attachment to amply allow for the distance you expect to shoot and the other end of the line may be attached to the bow or may be attached to a reel mounted on a rod with which you may "play" and land the fish after you have shot it. If one is shooting from a boat, as in the illustration above, it is quite satisfactory to allow the line to lie on the floor or deck coiled just as it fell when hauled in after the last shot. It will play out nicely. In shooting from a boat in this manner, of course, the attachment is not needed. Be sure in shooting that the line passes from the arrow nock over your left wrist in such a manner that it will not catch on your fingers or clothing when the shot is made.
No. AB-1 Attachment only, for holding line. Made of rubber, easily attached by lacing to your bow. Price.....\$1.00

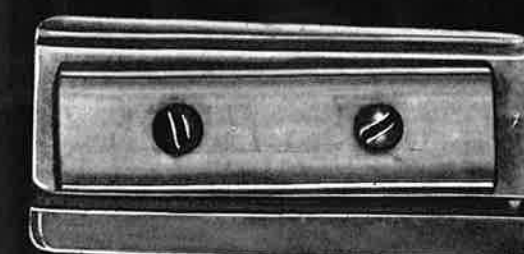
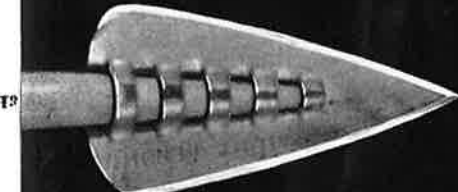
No. BH1



No. BH2



No. BH3



No. T-20 Hand Pointing Tool. For those who wish to make their own hunting arrows we have developed this tool, which quickly and accurately points the shaft to receive our patented one piece steel broadhead. Nice to have in one's kit on hunting trips to make or repair arrows. Price \$.75

Play Archery Golf!

Archery golf is an ideal game for roving the wooded hills and grassy fields. This entirely new way to play this game does not necessarily require a golf course. For the man and woman who likes to breathe the fresh, outdoor air, revel in the song of the twanging bow string and enjoy merry competition—we heartily recommend archery golf.

The rules for playing archery golf are indeed simple. As can be seen by the accompanying photograph, archery golf requires the use of three arrows: A flight arrow (comparable to the driving club), an approach arrow (comparable to the iron club), and a putting arrow (comparable to the putter). In addition to these arrows, there is need for the metal stand 28 inches tall upon which is placed a 4-inch cotton ball covered with laytex rubber. This ball represents the cup and must be hit and knocked off before a "putt is sunk." Let's suppose for the moment that the two of us have just alighted from our car near the edge of a grassy field. The soft wind blows gently upon our faces and we feel that all is right with the world. Having our trusty bow strung, along with our quiver of arrows and "putting green"—we decide that our first green will be that burnt stump on the wooded hillock 400 yards away. One shot with our flight arrow and we approach within 150 yards of the stump. Out comes our approach arrow and—zing! Up to the stump within 5 yards . . . Having placed the 4-inch ball on top of the stand which is stuck in the ground beside the stump, you crack down and knock the ball for a beautiful par three! My shot? Yes, I missed my "putt" because I should have made another shot to approach closer to the stump before putting—but—my shooting is improving, so you had better watch out on the next station. How about that isolated patch of brush over there in the corner of the field?

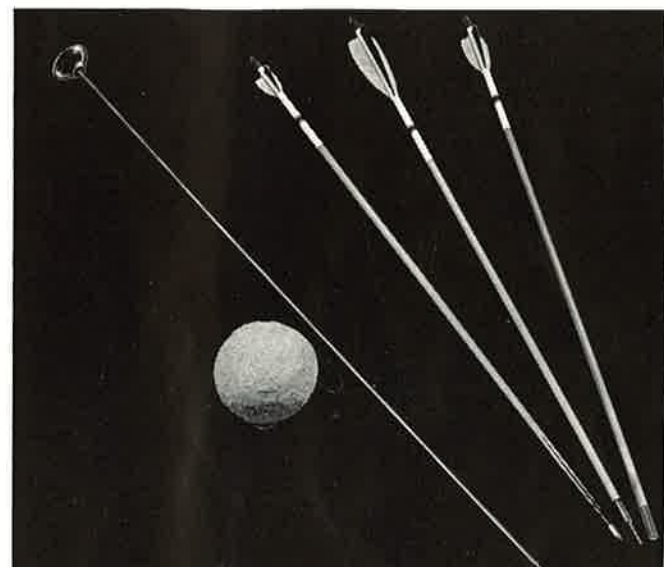
And so the game goes for 9 "holes" or 18 "holes" according to your own desires.

The game may be played on a regular golf course, on a course specially laid out for it, or as suggested above, on any open space available. Fun? Try it!

The 4-inch ball perched on its stand is an inviting mark, and players are ever tempted to try "putting" shots from 30 to 40 yards. Herein lies an interesting feature of the game, for if he fails to "sink the putt" his arrow will skid 30, 40, or 50 yards beyond its mark and he is in much the same situation as before. Of course, a conservative player will make careful approach shots and not risk long "putting" shots.

In playing Archery Golf, the same bow should be used for all shots. A full draw must be taken for every shot. The ball must be hit and knocked off the stand to "hole out." Hits on the stand that dislodge the ball do not count.

No. G-400 Archery Golf Arrow Set: One footed flight arrow fletched with very small feathers.



One Port Orford Cedar footed approach-arrow. Equipped with special approach point to prevent skidding. One Port Orford Cedar footed "putting" arrow, equipped with blunt point. All arrows made for same weight bow. Price for set (3 arrows) \$4.00

No. G-402 Two of each above arrows (set of 6 arrows) Price \$7.50

No. G-403 Archery Golf Arrow Set: One footed flight arrow fletched with very small feathers.

One self birch approaching arrow, approach point, large feathers.

One self birch, putting arrow, medium feathers, blunt point.

Price for the set (3 arrows) \$2.50

No. G-404 Two of each above arrows—Set (6 arrows).

Price \$4.75

No. GBO—Archery Golf Ball and Stand: One latexed cotton ball 4 inches diameter with loop for carrying.

One 28-inch metal stand, with rubber cup which serves as perch for ball. Price, set \$.50

"Teeing Off"

"Approaching"

PAGE 16

"Putting"

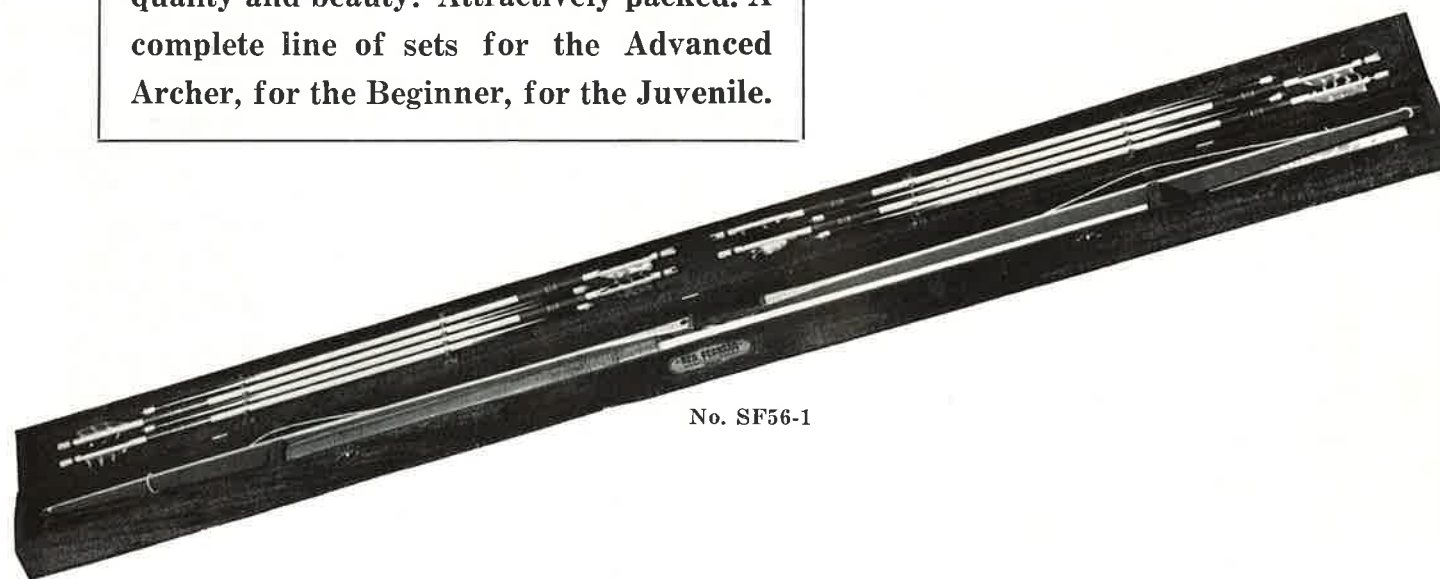
"Holing Out"

Deluxe Archery Set

Flight shooting is but another form of competitive archery challenging brawn and skill and the best in equipment. At the 1939 National Tournament at St. Paul, Curtis Hill shot an arrow 517 yards and 1 foot which was a new record for regular-style shooting. Pictured here is Murry Yantis of Austin, Texas, winner of many flight events.



L. C. Whiffen Archery sets have unusual quality and beauty. Attractively packed. A complete line of sets for the Advanced Archer, for the Beginner, for the Juvenile.



No. SF56-1

No. SF56-1 DeLuxe Archery Set: Suitable for skilled target shooting. Set consists of one 5½-foot fibre-backed lemonwood bow, eight 26-inch matched footed tournament arrows, one cordovan armguard, one cordovan finger tab, one leather quiver, one 36-inch target face painted in regulation target colors. Attractively packed in neat, wooden box which serves as permanent case. Price \$15.00

No. SF56-2 The Collegian Archery Set: Suitable for advanced target shooting. One 5½-foot fibre-backed Lemonwood bow, eight 26-inch footed arrows, one leather

armguard, one leather finger tab, one heavy imitation leather quiver, one 36-inch target face painted in regulation colors. Instructions for shooting, etc. Packed in neat, wooden box which serves as permanent case.

Price \$12.50

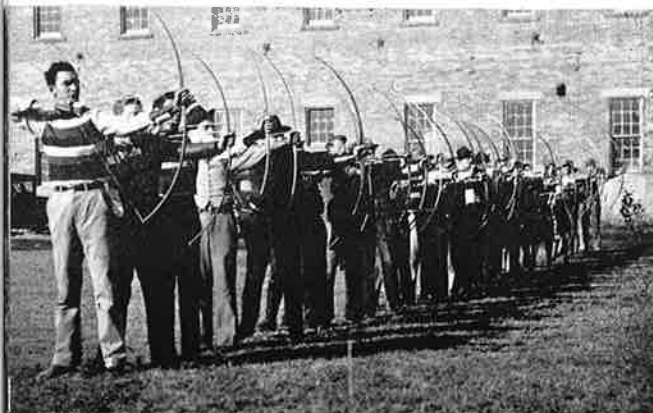
No. SF50-1 The Champion Archery Set: One 5-foot fibre-backed lemonwood bow, eight 24-inch footed arrows, one leather armguard, one leather finger tab, one 36-inch target face painted in regulation colors. Instructions for shooting. Packed in wooden box, forming permanent case for the set. Price \$10.00



No. F301 Flight Arrow



No. 301 Flight Arrow



Archery Sets Popular Priced

Schools and colleges throughout the nation more than ever are incorporating archery in their athletic activities, because this sport, aside from being highly competitive, lends itself to participation by every member of the student body. Further, archery is a sport which they can follow and enjoy throughout life.



No. SF56-3

No. SF56-3 The Locksley Archery Set: One 5½-foot fibre-backed lemonwood bow, six 26-inch Port Orford Cedar self arrows, leather armguard, leather finger tab, one 36-inch target face painted in regulation colors. Instructions for shooting. Packed in wooden box, forming permanent case. Price\$8.50

No. SF50-2 The Sherwood Archery Set: One 5-foot fibre-backed lemonwood bow, six 24-inch Port Orford Cedar self arrows, one leather armguard, one leather finger tab, one 36-inch target face painted in regulation colors. Instructions for shooting. Packed in wood box, forming permanent case. Price.....\$7.00

No. S56 The Rover Archery Set: On 5½-foot self-backed lemonwood bow, six 26-inch Port Orford Cedar arrows, leather armguard, leather finger tab, 36-inch target face painted in standard colors. Instructions for correct shooting. Packed in wooden box, forming permanent case. Price\$7.50

No. S50 The Ace Archery Set: One 5-foot self-backed lemonwood bow, six 24-inch birch arrows, leather armguard, leather finger tab, 36-inch target face painted in regulation colors. Instructions. Attractively packed in wooden box. Price\$5.75



No. S5H

No. SF46 The Merry Bowman Archery Set: One 4½-foot fibre-backed lemonwood bow, six 22-inch Port Orford Cedar arrows, leather armguard, leather finger tab, 16-inch target face in standard colors. Instructions for correct shooting. Attractively packed in open top wooden box. Price\$5.00

No. SF40 The Bold Blade Archery Set: One 4-foot fibre-backed lemonwood bow, six 20-inch arrows, one leather armguard, one leather finger tab, one 16-inch

target face in standard colors. Instructions for correct shooting. Attractively packed in open top wooden box. Price\$4.95

No. S5H The Old Hickory Archery Set: One 5-foot, flat type hickory bow, six 25-inch arrows, leather armguard, leather finger tab, one 16-inch target face in standard colors. Instructions for correct shooting. Attractively packed on stained wooden board. Price, \$3.95

NOTE TO DEALERS: Archery sets listed on page 17, numbers SF56-1, SF56-2, SF50-1, and numbers SF56-3, SF50-2, S56 and S50 on this page, are packed with arrows of the length indicated. However, arrows of a length to suit the individual may be substituted from your arrow stock, since the box is designed to hold

arrows of various lengths. Be sure, in substituting different arrows, that the ones substituted are not too long for the bow. See table on page 11. Bows in the sets are labeled with the drawing weight. Therefore, it is easy to furnish the individual with a set to suit his particular needs.

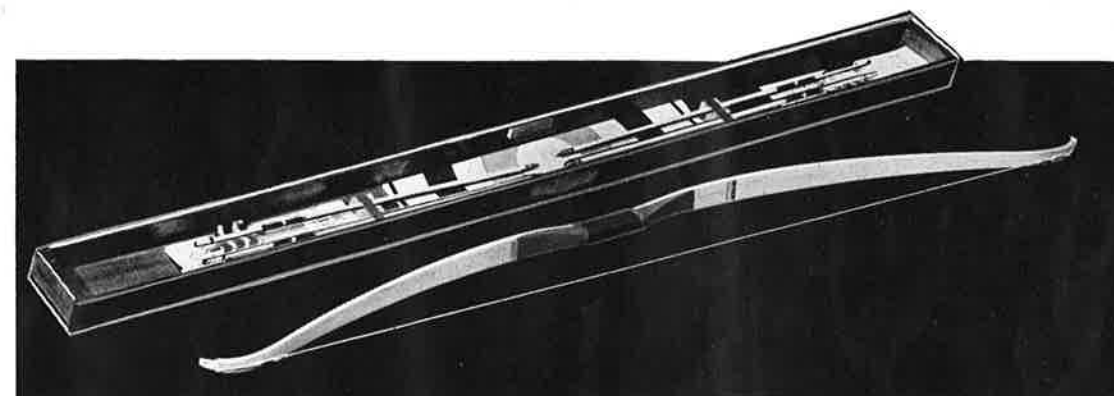
Archery Equipment For Youngsters

As can be seen from this photograph, archers often begin at a tender age. Good archery equipment is just as important for the young archer as for the older archer. After all, if Buddy and Sis are to become interested in archery, they should have equipment that will help them hit the bull's-eye.



America's Leading Juvenile Archery Sets—Not Toys—Actual Archery Equipment: These two archery sets for youngsters are precision equipment designed by expert archery craftsmen and made from quality materials. The amazingly low prices on these two sets is made because we know that archery can be encouraged in America by getting precision equipment into the hands of youngsters. Therefore, these two sets represent the best buy in juvenile archery equipment for your money.

NOTE: Dealers have found a great market for these sets. Re-orders are proving that there is a year-round market for them.



No. S4HR

No. S4HR Junior Champion Archery Set: Set consists of flat type, 4-foot recurved hickory bow, as illustrated, four well-fletched, well-made 18-inch arrows, colored target face, and complete instructions for correct shooting. Attractively packed in open-top wooden box. Price\$2.95



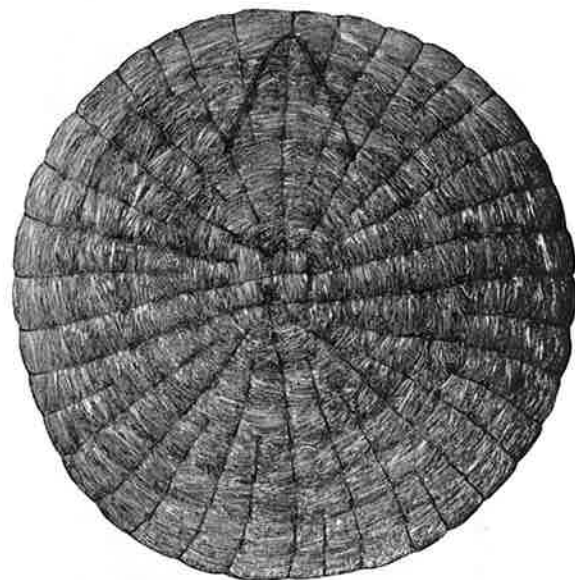
No. S4H

No. S4H Cock Robin Archery Set: Set consists of flat type, 4-foot hickory bow, four well-made, well-fletched 18-inch arrows, colored target face, complete instructions for correct shooting. Attractively packed, on stained wooden board. Price\$1.95



Tournament Target Equipment

Sinking a shaft into the bull's-eye from 60 yards is a thrill that every archer knows and seeks. (See page 31 for archery rounds shot in tournaments and in practice). Once you have heard your arrow "chuck" into the bull's-eye of a firm straw target—you will understand the "archery bug."



HIGHEST GRADE TOURNAMENT TARGETS

No. RTT-48 Standard Tournament Target: Hand-made throughout of specially cured rye straw. These tournament grade targets incorporate the very best features developed in the past twenty-five years of target making. The center and most important section of the target is scientifically constructed to be a self-binding unit. This insures extra life to the target as a whole. Stitched throughout with a tarred sisal in even web form. Neatly trimmed to show each individual coil from the center out to the very last roll. Equipped with standard 48-inch non-glaring face. Target may be tightened very easily by starting at the center and pulling the stitches up tight as per instructions attached to each target. With reasonable care this target will last many seasons. Price **\$15.00**

Shipping weight approximately 70 pounds.

No. RT-36 Target: Same as No. RTT-48 except 36 in. in diameter. Price **\$12.00**

Shipping weight approximately 35 pounds.

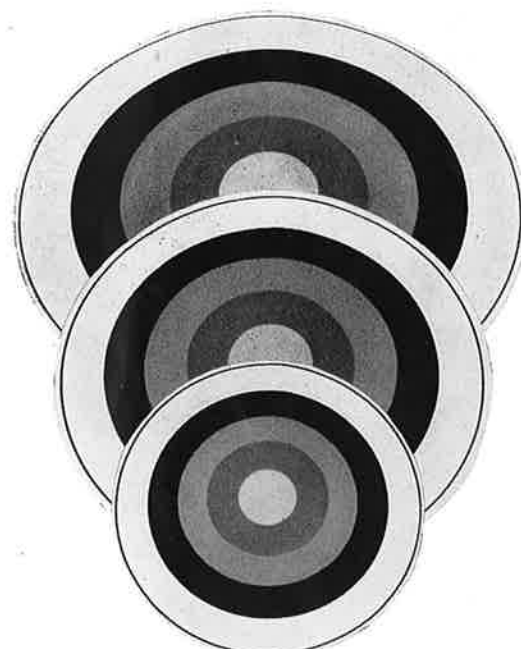
No. RT-24 Target: Same as RT-48 except 24 inches in diameter. Price **\$8.00**

No. MGT-48 Tournament Target: Hand-made of tough marsh grass. Constructed same as No. RTT-48 except it has less stitches. A good, firm, long-lasting target, equipped with standard 48-inch non-glaring face. Price **\$12.00**

Shipping weight approximately 60 pounds.

NOTE: The above targets are all priced F. O. B. Independence, Missouri, where they are manufactured for us and are shipped from there.

No. STS Standard Target Stand: Made of tough, soft wood designed to hold target at proper height and angle. Price f. o. b. Milwaukee **\$1.25**



TARGET FACES

These target faces are exact in dimensions. The colors, white, black, blue, red, and yellow, are distinctly defined and non-glaring. Painted on special bleached white cotton material pre-shrunk and sized:

No. CF-48 48-inch	\$1.50 Each
No. CF-36 36-inch90 Each
No. CF-24 24-inch65 Each

Will be cut square unless specified cut round.

Furnished with sewn skirt and draw string for ease in attaching to target:

No. SS-48 48-inch	\$2.10 Each
No. SS-36 36-inch	1.40 Each
No. SS-24 24-inch	1.00 Each

PAPER TARGET FACES

Made of heavy white paper in full color:

No. PF-48 48-inch	50c Each
No. PF-36 36-inch	30c Each
No. PF-24 24-inch	20c Each
No. PF-16 16-inch	10c Each

(Note: 16-inch size made of lighter weight paper).

ONE COLOR INDOOR PAPER FACES

(Black on White)

No. OC-24 24-inch	90c Per Doz.
No. OC-16 16-inch	80c Per Doz.

Shooting Accessories

Literally, "the strong arm of the law" is giving an excellent example of what would have been top equipment had not someone gone and invented guns. Still, policemen in some cities do indulge in archery as part of their training to keep physically fit and mentally alert.



THE PERFECT SHOOTING GLOVE

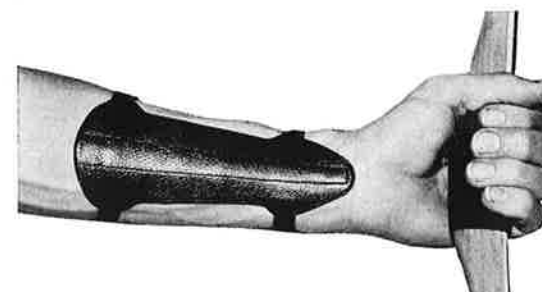
Carefully styled and beautifully made of finest calfskin, this glove will fit your hand comfortably. Your choice of cordovan or cowhide tips.

No. PSG-1 Cordovan	\$1.25 Each
No. PSG-2 Cowhide	1.10 Each

Sizes: Ladies and Juniors: Small, medium small, medium large, large.

Men's: Small, medium small, medium large, large, extra large.

When ordering enclose a pencil outline of your hand, including the wrist.

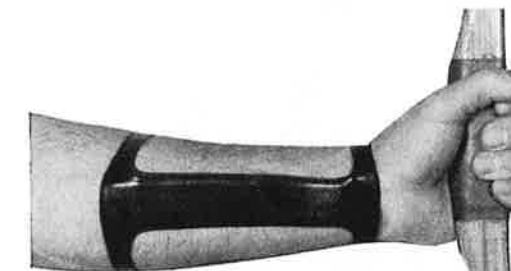


LIGHTWEIGHT TARGET ARM GUARDS

Designed to meet the demand for a light, thin, comfortable and efficient arm guard. Three concealed thin spring-steel stays sewn in. Equipped with elastic straps and adjustable fasteners, or leather straps with buckles. Elastic straps will be shipped unless you specify leather.

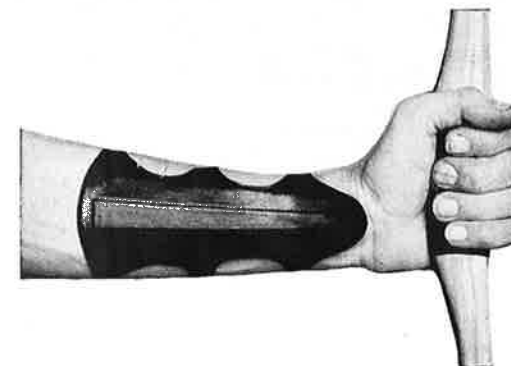
For Ladies or Men

No. K-1 Cordovan	\$1.25
No. K-2 Calfskin	1.10



STREAMLINED TARGET ARM GUARD

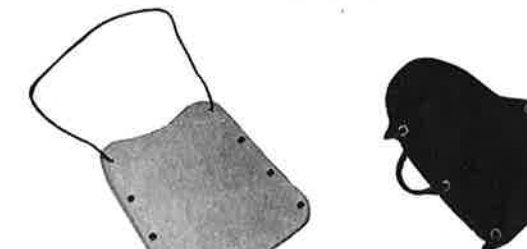
No. KG-1 Has one heavy spring steel insert formed to fit the arm. Leather straps with buckles. Leather lined. Cordovan only **1.25**



HUNTING ARM GUARD

Built for hunting and roving. Has steel stays same as K-1 and K-2, but straps and buckles are used instead of elastic. The straps and the guard are all one piece of leather.

No. HG-1 Cordovan	\$1.75
No. HG-2 Calfskin	1.50



STANDARD LACE AND HOOK GUARDS

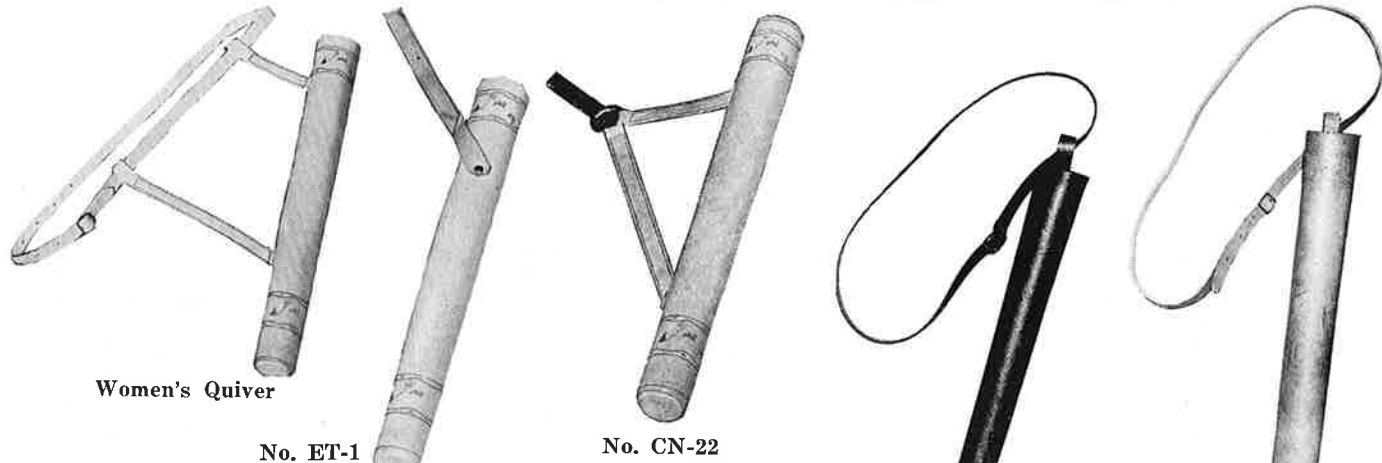
Equipped with Hooks and Elastic Lace:

No. LGL-1 Large, Cowhide, Lined with Felt	\$1.00
No. LGL-2 Small, Cowhide, Lined with Felt90
No. LG-1 Large, Plain Cowhide75
No. LG-2 Small, Plain Cowhide65
No. LGS-3 Single Hook, Small, Genuine Leather. Easy to put on or remove. A fine arm guard for schools, ranges, etc.35



Target Quivers, Bowcases

The thrill of shooting a bow and arrow out in the wide open spaces brings out the primitive feeling of independence which is so enjoyable in these modern times of interdependence. Days or afternoons spent afield with a trusty bow and a quiver full of arrows will remain forever in the mind of the archer as the most cherished moments of his entire life. The archer here (Mr. Lowrey Frestedt of Minneapolis) is actually aiming at a pheasant!



Women's Quiver

No. ET-1

No. CN-22

WOMEN'S QUIVER

A quiver with double straps, leather belt and buckle. 18 inches long by 1½ inches diameter, tapered. Embossed decorations.

- No. LP-1 Natural Oak-tanned Strap Leather \$1.75
- No. LP-2 Mahogany Colored Strap Leather 1.75
- No. LP-3 Chrome Elk Leather 1.75

No. ET

A quiver designed to hang from your belt or hip pocket with a hook which is attached to the under side of the leather strap. Size, 16 inches long by 1½ inches diameter, tapered. Embossed decoration showing archery symbols.

- No. ET-1 Natural oak-tanned strap leather \$1.50
- No. ET-2 Mahogany oak-tanned strap leather 1.50

No. CN

A very neat and serviceable target quiver; sixteen inches long, one and one-half inch diameter, tapered. Riveted leather straps lead to a ring equipped with a belt hook. Holds six arrows suspended from your belt.

- No. CN-21 Solid oak-tanned strap leather in natural color, with embossed decoration \$1.50
- No. CN-22 Solid oak-tanned strap leather in mahogany color, with embossed decoration \$1.50
- No. CN-3 Heavy brown chrome-elk leather, with embossed decoration \$1.50

No. SR-1

No. RR-1

- No. CN-1 Heavy imitation leather with formed leather bottom65
- No. CN-2 Imitation leather (Fabrikoid)50

No. SR

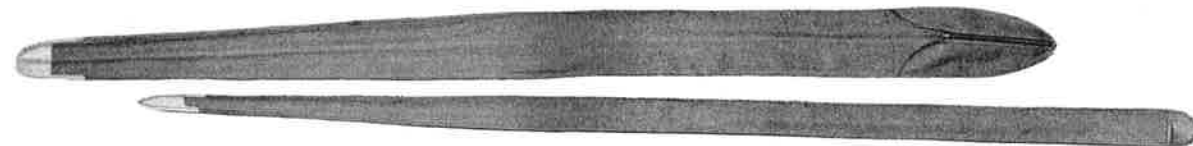
A large quiver, equipped with a 42-inch belt and buckle to which the quiver is attached by means of a small loop. Worn around the waist. Twenty inches long, 2-inch top diameter, 1½-inch bottom diameter.

- No. SR-1 Heavy imitation leather with formed leather bottom65
- No. SR-2 Imitation leather with self bottom50

No. RR

The same style as the SR quiver but larger in diameter. Twenty inches long; top diameter 2½ inches; bottom diameter 1¾ inches.

- No. RR-1 Heavy imitation leather with formed leather bottom75
- No. RR-2 Heavy brown chrome-elk leather, with embossed decoration \$2.00



BOW CASES

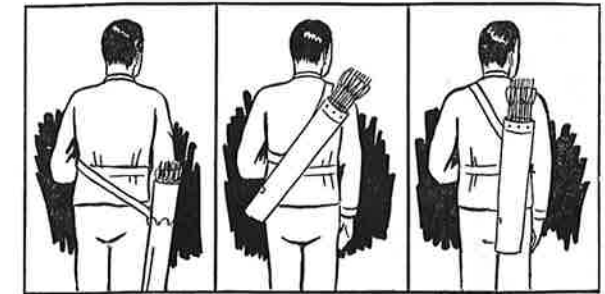
Your bow deserves the protection of a bow-case. Cases described below are stocked in the following lengths: 5 ft.; 5 ft. 2 in.; 5 ft. 4 in.; 5 ft. 6 in.; 5 ft. 8 in.; 5 ft. 10 in.; 6 ft.; 6 ft. 2 in.

They are made to accommodate bows of an overall length of one inch longer than these dimensions. The teal and khaki cases have tie strings. Will fit both straight and recurved bows.

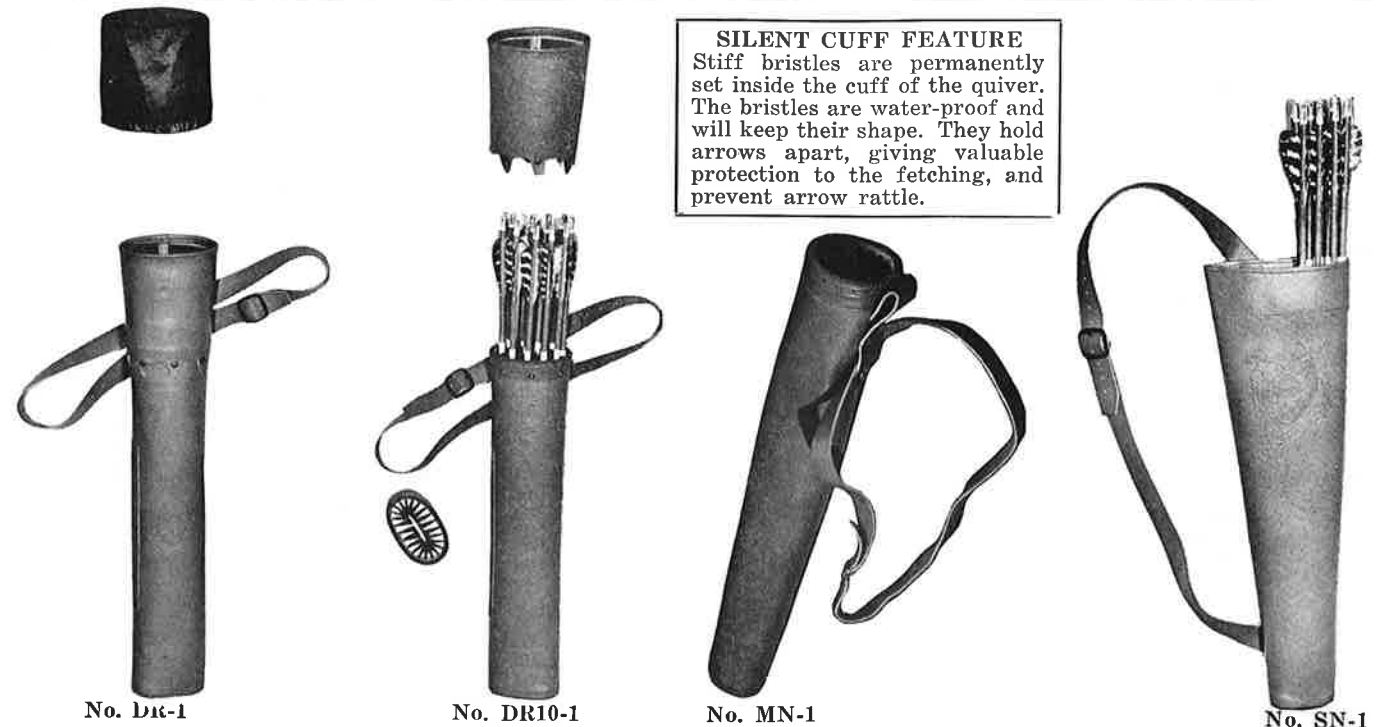
- No. KI-1 Made of 6-ounce khaki-colored material. Reinforced with leather \$1.00
- No. TL-1 Made from Teal Cloth (two layers of special closely woven fabric banded together with rubber) with whipcord lining. Bound and double sewn with heavy thread. Has pocket located under flap for carrying an extra bowstring \$1.75
- No. TL-2 Twin case for two bows. Made from Teal Cloth. Has zipper fastener and double string pockets \$2.90

Hunting Quivers

Hunting quivers are larger than target quivers. They are designed to keep the shafts ready for instant use and are made long enough so that movement through the field and forest will not jostle out the arrows. As can be seen by the illustration, there are several ways in which archers choose to wear hunting quivers.



SILENT CUFF FEATURE
Stiff bristles are permanently set inside the cuff of the quiver. The bristles are water-proof and will keep their shape. They hold arrows apart, giving valuable protection to the fletching, and prevent arrow rattle.



No. DR-1

No. DR10-1

No. MN-1

No. SN-1

HUNTING QUIVERS

No. DR

Built to fill the need for a real hunting quiver, universally adaptable to varying conditions and for all kinds of weather.

Flat-oval in shape, 22 inches long, 2½ inches by 4½ inches at the top, 2¼ inches by 4¼ inches at the bottom. Special features include:

Adjustable for carrying in any of the three popular quiver positions as illustrated. Exclusive Silent Top feature. (See description above).

Separate leather hood can be attached with snap fasteners for use in wet weather or brushy country. The hood covers and protects the whole arrow.

An oiled-silk cover can be carried in a zipper-pocket fashioned in the side of the quiver. The pocket has room for your file and extra bowstring. The oiled-silk cover fits over the hood of the quiver, and is used in heavy rain and wet snow, or when the quiver is transported or shipped.

Made of heavy flexible brown chrome-elk leather, beautifully embossed, and furnished with a leather belt 1½x46 inches. Holds about 15 arrows.

- No. DR-1 Complete with belt, hood and cover \$8.25
- No. DR-2 Quiver and belt only 6.50
- No. DR-3 Hood only 1.25
- No. DR-4 Oiled-silk cover only50

No. DR10

A slightly smaller hunting quiver built without the zipper-pocket, but otherwise exactly the same as the No. SN-1 With strap and buckle, as illustrated.....\$4.75

larger No. DR-2. Holds ten arrows. Size: 22 inches long; top 2¼ x 3¾ inches; bottom 1½ x 3¼ inches.

- No. DR10-1 Complete with belt, hood and cover \$6.50
- No. DR10-2 Quiver and belt only 5.00
- No. DR10-3 Hood only 1.00
- No. DR10-4 Oil silk cover only50

No. MN

A round tapered hunting quiver that may be carried at the waist or over the shoulder. Made of heavy flexible brown chrome-elk leather, beautifully embossed and furnished with a 44-inch belt.

Regular size: Length, 22 inches; top diameter, 3 inches; bottom diameter, 2½ inches.

- No. MN-1 Regular size, with silent cuff \$4.50
- No. MN-2 Regular size, without silent cuff 2.75
- No. MN-3 Regular size, heavy imitation leather 1.00

Large size: Length, 22 inches; top diameter, 3½ inches, bottom diameter, 2¾ inches.

- No. MN-4 Large size, with silent cuff \$5.25
- No. MN-5 Large size, without silent cuff 3.25

No. SN

Gracefully shaped, with a large opening. It is designed to be slung across the back, and the straps are so arranged that the quiver may be shifted from one side to the other. The curve of the wearer's back, binding against the center of the quiver, keeps the arrows from rattling.

Made of heavy flexible brown chrome-elk leather, with a flush zipper-pocket for your extra bowstring, file, etc.



Semi-Finished Bows

For any person who is handy with a drawing knife and scraper, the making of a bow will be a real pleasure. There are certain sound principles which must be followed if a bow of excellence is to be achieved. Materials which are available for such construction purposes are the very best quality.

Our semi-finished bows are made of select, well-seasoned stock. They are perfectly shaped for flat type, fast, hard shooting bows. They are worked so nearly to the correct proportions that very little scraping is necessary to bring them into perfect balance and tiller. The string nocks are cut and they are ready to be strung so that any stiff places may be noted and marked for scraping. It's a simple matter to produce a good bow using these very excellent semi-finished staves. Instructions for completing come with each semi-finished bow.

No. UL-59 Semi-finished Bow, Lemonwood: Five feet eight inches long. Good for bows to 50 pounds. Price \$2.35

No. FUL-59 Equipped with fibre back \$3.35

No. SU-56 Semi-finished Bow, Lemonwood. Five feet, six inches long. Medium, good for bows to 40 pounds \$1.50

No. SUL-56 Equipped with fibre back \$2.50

No. UL-50 Semi-finished Bow, Lemonwood: Five feet long. Good for bows to 25 pounds. Price \$1.25

No. FUL-50 Equipped with black fibre back \$2.25

No. H-51 Semi-finished Bow, Hickory: Five feet long; good for bows to 35 lbs, at 26 inches \$1.00



Archery Materials

There is an unusual feeling of satisfaction that comes from making your own bow and arrows. It is a good idea, however, to make your first bow from a lemonwood or hickory stave so as to gain the proper experience before tackling a pair of yew billets or an Osage Orange stave. Once you have made a good bow and a set of arrows you will appreciate the deep-rooted interest in archery as a sport and as a craft.



BOW STAVES AND BILLETS

Because we stock quality bow staves and billets in such large quantities, you are always assured of receiving the very best, well-seasoned stave or pair of matched billets for your money.

OSAGE ORANGE BILLETS

No. OM-1 Osage Orange Billets: First quality, matched, well-seasoned and suitable for flat wide type bows. Positively A-1 quality. Price \$7.50

No. OMS-1 Spliced and back-worked to same grain from end to end. Price \$10.00

No. OM-2 Second Quality, Matched: As good as most staves listed as first quality. Price, Postpaid \$5.00

No. OMS-2 Spliced and back-worked to same grain. Price, \$7.50

YEW BILLETS

No. YM-1 Yew Billets: First quality, matched and well seasoned. Price \$7.50

No. YMS-1 Spliced and back properly prepared for making bow. Price \$10.00

No. YM-2 Second Quality: Price \$5.00

No. YMS-2 Spliced and back prepared for making bow. Price \$7.50

LEMONWOOD BOW STAVES

3/4 in. x 1 1/2 in. x 5 ft. 8 in. \$1.05

3/4 in. x 1 1/2 in. x 6 ft. 2 in. 1.25

1 1/8 in. x 1 1/8 in. x 6 ft. 2 in. 1.25

1 1/8 in. x 1 1/4 in. x 5 ft. 6 in. 1.30

1 1/8 in. x 1 1/4 in. x 6 ft. 2 in. 1.45

1 1/4 in. x 1 1/2 in. x 6 ft. 2 in. 1.95

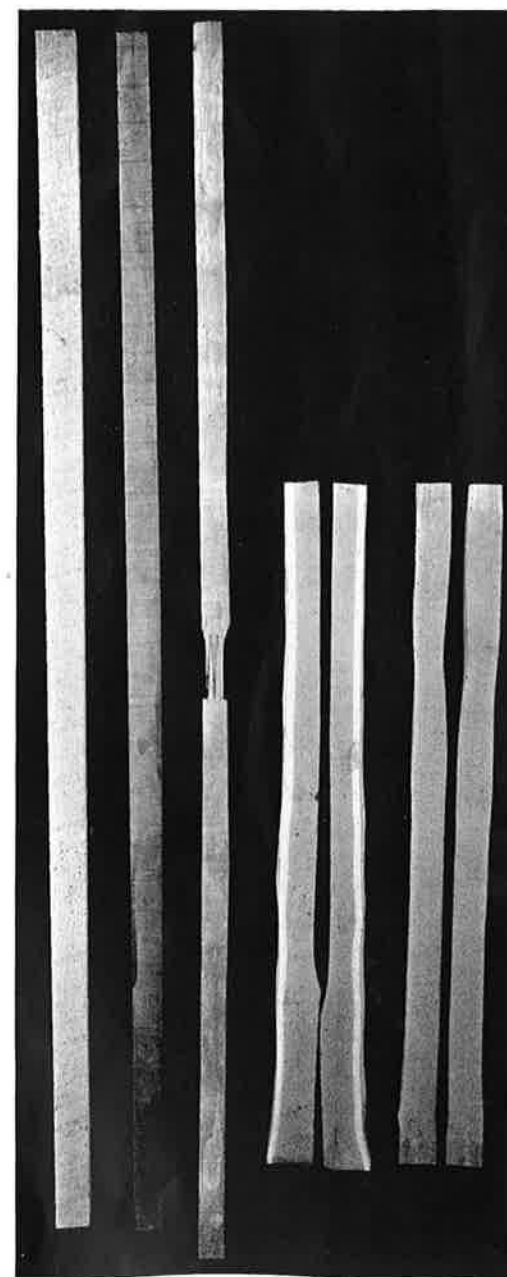
HICKORY BOW STAVES

Manufactured of exceptionally good hickory.

No. HS-1 Hickory Bow Stave, 1 1/4 in. x 1 1/2 in. x 5 ft. 6 in. long, .65

No. HS-2 Hickory Bow Stave, 1 1/4 in. x 2 in. x 5 ft. 6 in. long .75

Note: Every precaution is taken to insure your getting a stave or a pair of billets that will make a good bow. But as the craftsman is largely responsible for the outcome of his bow, we cannot replace staves after they have been worked on. If for some reason you may receive wood that in your opinion will not make a good bow, it should be returned immediately for exchange or credit.





Archery "Mak-a-Bow" Kits

FOR SCHOOLS AND CAMPS

This "MAK-A-BOW" construction kit has always been far in advance of anything in the country. It offers semi-finished bows that will come as near to guaranteeing a successful finished bow and arrow set that has ever been presented. Thousands of these "MAK-A-BOW" sets have been completed in schools and camps throughout the country. Making equipment is instructive, constructive, and interesting.

It is real fun to fashion your own bow and arrows. To school and camp crafters we recommend either of these "MAK-A-BOW" kits. The materials used are the very best for the money. All operations requiring special tools other than those furnished, have been done. Complete instructions and diagrams are furnished with each kit.

No. HK-1 The "MAK-A-BOW" Archery Construction Kit: Kit consists of extra select hickory stave 5 ft. 2 in. long, shaped and sanded to bow outline for making flat type bow. Will make bow pulling as much as 35 pounds if desired. Six birch shafts, six brass paralleled pyles, and string nocks cut. Sufficient base ground vanes cut from turkey feathers, to fletch the shafts; Fletcher's cement; flax string; material for handle; illustrated instructions. Price \$1.75

No. LK-1 With lemonwood stave instead of hickory. Price \$2.25

Special Discount Prices on "Mak-a-Bow" Kits in Dozen Lots
(This Price Available Only to Organizations)

LWK-12 The Lemonwood Kit consists of twelve selected quality, semi-finished 5 ft. 8 in. lemonwood bows, and the materials to make seventy-two arrows. With this kit of one dozen sets is included a Tru-Flite fletching tool, instruction sheets, varnish, a brush, fletching cement, wax, and sandpaper. The bows will pull up to 45 pounds.

Each complete set costs only \$1.65
Price (One dozen sets) \$19.75

No. LWS-1 This single lemonwood bow and arrow set is the same as in No. LWK-12, except that in less than one dozen lots; the extra tools are omitted.
Price \$1.75
Please Note—This price is available only to organizations.

HWK-12 The Hardwood Kit is the same as LWK-12 except that semi-finished 5-foot hickory bows are supplied. There is a minimum amount of unskilled work required to finish these into excellent beginners' bows pulling up to 35 pounds.

Each complete set costs only \$1.31
Price (One dozen sets) \$15.75

HWS-1 This single hardwood bow and arrow set is the same as in HWK-12 except that in less than one dozen lots the extra tools are omitted. Price \$1.40
Please Note—This price is available only to organizations.

LWB-12 This kit contains the materials for finishing 12 lemonwood bows, the same as in LWK-12 except that no arrows or tools are included. Price (One doz.) \$13.75

HWB-12 This kit contains the materials for finishing 12 hardwood bows, the same as in HWK-12 except that no arrows or tools are included. Price (One doz.) \$9.75

AK-100 This kit contains 100 selected, tennoned, and nocked birch shafts, 100 points, 100 full-ground base feathers, and cement. Specify desired arrow lengths 24, 26, or 28 in., or number of each length.
Price (100 sets) \$6.75



Archery Materials

As can be seen by the rabbits hanging from the belts of these two archers, killing game with bows and arrows is not just talk but a reality! Many sportsmen throughout America are finding thrills galore in field archery. The crisp, fresh air and the twang of the bowstrings brings a new and unforgettable song of the great outdoors into the hearts of the initiated. The archers—Wiley Wilcox and Hurley Dennard of Pine Bluff, Arkansas.

FOOTED ARROW SHAFTS

Our footed shafts are made of the best selection of Port Orford Cedar, equipped with our special black hickory footings or with beefwood footings. Four point splice, perfectly round, straight grained. Shafts of each dozen are made from the same unit of stock. Sanded but not finished. Sizes 9/32 in., 21/64 in. and 11/32 in.
No. FAS-1 \$2.50 Per Dozen
1/4 in. Size 2.75 Per Dozen
In ordering state size.

Matched Footed Shafts

Very select stock. Fitted with pyrolin nocks, and parallel steel pyles. Matched to 3 grains in weight. Closely matched in spine. Nicely finished. In ordering, state color nocks desired, drawing length and weight of bow.

No. FAS-2 \$6.00 Per Dozen
Equipped with perfection steel pyles \$6.50 Per Dozen

TURNED PORT ORFORD CEDAR SELF SHAFTS

No. POC-1 Extra Select: Straight grained Port Orford Cedar Shafts. Perfectly round and uniform in size. Shafts of each dozen from same unit of stock. 9/32 in., 21/64 in. and 11/32 in. sizes, \$1 Per Doz.
1/4 in. size 1.20 Per Doz.

No. POC-2 Same as No. POC-1 except closely matched in spine and to 5 grains in weight. Order by size or state length, draw and weight bow. Price, \$1.75 Per Doz.

No. POCM Select Port Orford Cedar Shafts: Made of high-grade stock. Perfectly round and uniform in size. No culls.
9/32 in., 21/64 and 11/32 in. sizes
Price 60c per doz.

TURNED BIRCH SHAFTS

No. BAS-1 Made of extra select Northern Birch stock, shafts of each dozen made from the same unit split bolt stock. Straight grain. Perfectly round and uniform in size. These are exceptionally fine birch shafts. Suitable for highest grade hunting arrows.
Sizes 5/16 in. and 11/32 in. x 30 in. long.
Price 75c Per Doz.
Size 3/8 in. x 30 in. Price 85c Per Doz.

BIRCH DOWELS

No. BD-10 Good grade millrun birch dowels. Sizes 5/16 in. x 30 in. Price \$3.50 Per Doz.

ARROW FOOTINGS

No. BF-11 Select Beefwood Footing. Sizes 3/8 in. x 3/8 in. x 8 in. Price 50c Per Doz.
Slotted 5 inches. Price 60c Per Doz.

Turkey Pointers: Select, perfectly surfaced, full length ground base turkey pointers. Cellophane wrapped. One dozen to package:

No. TPB-10 Barred with colored cocks 40c the Doz.
No. DPB-10 Dyed barred pointers. Colors, 45c the Doz.
No. TWP-10 Natural White. Price 50c the Doz.

TARGET ARROW POINTS

No. PB-1 Short parallel brass pyles. 9/32 in. and 5/16 in. size. Price 30c Per Doz.
\$1.50 per hundred

No. PS-1 Short parallel steel pyles. 1/4 in., 9/32 in., 5/16 in. and 11/32 in. sizes. State size.

Price 40c per doz.
No. PPS-2 Perfection steel point. Extra thin wall. 7/32 in., 1/4 in., 9/32 in. and 5/16 in. sizes.
Price 60c per doz.

No. PRS-3 Blunt Roving Point: Steel, sizes 11/32 in. and 3/4 in. Price 50c per doz.
No. P-25, 25 calibre (1/4 in.) bullet jackets. Price 25c per doz.



ARROW NOCKS

No. ALN Moulded Aro-Lite Nocks: Correctly designed, attractive, durable. Instantly removable by heating with a match and cementing new nock on with our Fletcher's cement. Colors: Red, blue, orange, yellow, jade, green, black and white. Sizes, 1/4 in., 9/32 in., 5/16 in. Price 35c Per Doz.
\$2.00 per hundred

BOW BACKING MATERIAL

No. RH-2 Clarified Calfskin: 1 1/4 in. wide for bows up to 6 feet long. Price \$1.00 Each
1 3/4 in. wide. Price 1.25 Each

No. FB-3 Fibre Backing Strips: White or black. 1 3/8 in. wide, for bows up to 6 feet long 35c Each

LEATHER FOR BOW HANDLE

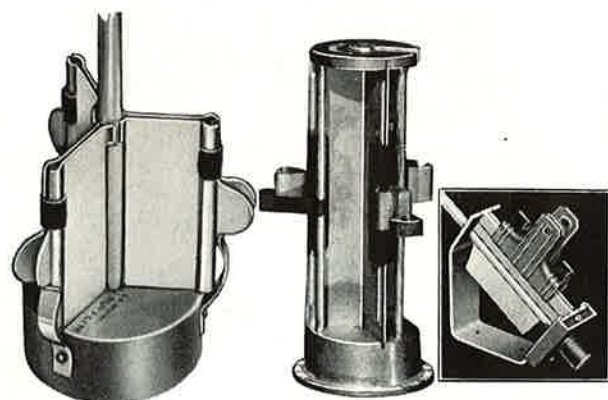
No. LBH-1 Calfskin: Assorted colors, with edges machine skived to feather edge. 3 3/4 in. x 5 in. Price, 20c Ea.
No. LBH-2 Leather strips for spiral wrapped handle. Price 20c Each
No. SFX Barbour's No. 12 Irish Flax for making bow strings. 2-oz. Ball. Price \$1.00 Each
No. BXW Bowyers Wax. 2-oz. cake. Price, 30c Each



Arrow Case, Bow Sight,

Unique indeed is this archery exhibition—it is being held on a frozen lake! Such enthusiasm for the "king of sports" is proof enough that archery is a year-round activity ever tugging at our inner feelings which demand that we get out and get under the blue skies. Answer the call of the bow and arrow and you will discover new thrills with stimulating impulses.

THREE EXCELLENT FLETCHERS



TRU-FLITE FLETCHER **MASTER FLETCHER** **PROFESSIONAL FLETCHER**

TFF-1 Tru-Flite Fletcher. A fast, sure fletching device. Accurately sets all three feathers at one time. Cannot get out of adjustment. The TRUE-FLITE fletcher should be part of every archer's home equipment.

TFF TRU-FLITE FLETCHER, each, complete — \$1.50

No. PJ-5 Master Fletching Tool: (Patent Pending). A rugged aluminum die casting equipped to apply all three feathers. Fits all sizes of shafts, straight or tapered. Takes vanes to 6 inches long. This is a precision machine designed for precision fletching combined with convenience and speed. Price.....\$2.50 Each

No. PF-6 The Professional Fletcher. This tool is for the archer who demands perfection. It is adjustable for either straight or spiral fletching, takes all diameter shafts. Sets fletches singly. Price\$4.50

No. PAE Aiming Ensemble: Set consists of ground clip for holding point of aim; toe markers and marker for point of aim so it can be relocated in event it is accidentally kicked or otherwise moved; these markers rest flush with the ground, thus they cannot be moved accidentally. Range finder for locating proper place for point of aim at the various distances. Price complete with instructions50c



No. AC-36 The DeLuxe Arrow Case: A very strong and durable, yet light, good-looking arrow case. Made of light tough wood and covered with luggage fabric. Neatly trimmed. Holds two dozen arrows and has ample accessories compartment. The most convenient arrow case ever made. Over all size. Price, \$12.00 Each

No. GQ-1 Ground Quiver: Made of ¼ in. diameter iron with rack for bow. Enamel finish. Price..... 50c each

No. GQ-2 Ground Quiver: Demountable cast aluminum head; steel rod. Has bow rack and cigarette holder. Will pack conveniently in arrow case. Price, \$1.00 each

No. S-22 The L. C. Whiffen Bow Sight: This sight is very light in weight and finely finished. Adjustable for both vertical and horizontal movements with one thumb screw. Has finger stop which makes uniform arrow rest of the forefinger. May be attached without screws, using tape or thread. Furnished with small leather pads for protection of bow. Price \$1.50 each



Bowstrings, and Miscellany

Besides the positive exhilaration of drawing and releasing hunting shafts from a fast bow, there is an indescribable feeling of comradeship which swells in the hearts of men who rove the hills side by side with a quiver of arrows and a trusty bow poised ready for a fleeting shot. Archery draws men together into a warm and binding friendship which remains as steadfast as does the sport itself in the hearts of men.



No. LLS The Lay-Latex Bowstring: A new development in string construction. Finest Irish Flax treated with a special formula of latex rubber.

Twisted and served under high and uniform tension. Does not fray or require waxing. Will not untwist or stretch.

Very light in weight for its strength. Served both at center and loops for long, trouble-proof service.

These strings have the endorsement of some of the best known target shots, flight experts, and big game hunters. No better strings are made.

In ordering, specify Double or Single loop, weight of bow, and length of bow from nock to nock. If in doubt of exact bow length, order Single loop style, which has a wide adjustment for length. Price, 50c each

No. HSL Hand Laid Bow String: Made of finest Irish Flax. Cable laid reinforced ends. Pre-stretched and treated with our special formula of rubber latex or with bowyers wax as you prefer. Unless otherwise specified, rubber latex treatment will be sent. Served unless specified. State length and weight bow. Up to 50 pounds. Price, single loop only.....75c each
50 to 90 pounds. Price, single loop only \$1.00 each

FINGER PROTECTORS

No. TA-1 Cordovan Shooting Tab: Large or small
Price 25c each

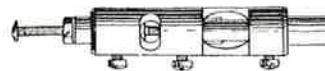


No. TA-2 Cowhide Shooting Tab: Large or small. Price 15c each

No. ST-3 Finger Stalls of Cordovan Leather: Large, medium or small sizes. Price (set of 3), 75c per set



No. WT All Wool Tassel. Price 50c each



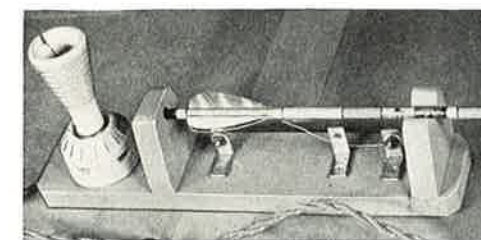
T-25 Tenon Cutter: This tenon cutter provides means for cutting the tenon or shoulder for the point or nock. A tube is provided as a guide to center the shaft, and by pushing the shaft against the revolving cutter (preferably mounted in lathe chuck) the tenon is quickly and accurately cut. Means are provided for adjusting the depth. This may be used in a brace or hand drill. Price\$2.50

For 5/16-inch or 9/32-inch shafts only; state preference
Parts for converting 5/16-inch cutter to 9/32-inch.
Only \$1.25

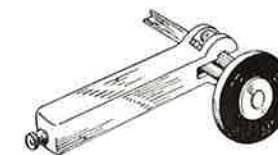


T-90 String Server: A fine tool for serving bow strings at the nocking point—fast, neat, and simple. Price \$1.25

TRU-FLITE FEATHER TRIMMER



This device is constructed so that it is a simple matter to trim the feathers any shape you wish. Adaptable to either AC or DC current. Set of instructions with each trimmer. TFT-True-Flite Feather Trimmer, each, complete \$2.00



T-35 Knurling Tool: A handy tool for attaching brass points and aluminum nocks. Adjustable from ¼ in. to ¾ in. Small enough to carry in the arrow box, yet sturdy and capable of semi-production use. Price\$3.50

No. FC-5 Fletchers's Cement: A very excellent cement for fletching arrows. Also for household use, repairs, model building, etc. This cement is used exclusively in fletching all Ben Pearson arrows. If properly used, vanes positively will not come loose. 2-oz. Tube 25c Each



TERMS

Terms: Cash with order or C. O. D., f. o. b. Milwaukee, Wis.

Prices subject to change without notice.

In ordering, please note the following: Be sure your name and address is plainly lettered.

Be sure to give catalogue number and name of items ordered, and state lengths, weights, sizes, etc.

Canadian shipments: No postal C. O. D. exists between the United States and Canada. Therefore, all Canadian orders should be accompanied with remittance in full.

Be sure to include sufficient postage with orders. Otherwise order will be delayed, as it will be necessary to notify you of deficiency. Excess postage will be refunded.

General Archery Information

THE ARCHER'S EQUIPMENT

In archery as in golf, tennis, hunting, or similar established sports there are certain fundamental pieces of equipment which participants must have in order to execute the sport correctly. In archery this equipment consists of a bow, arrows, armguard, shooting glove or tab, and a quiver for holding the arrows. In target archery, it is necessary to have a portable target or straw butt and a suitable range.

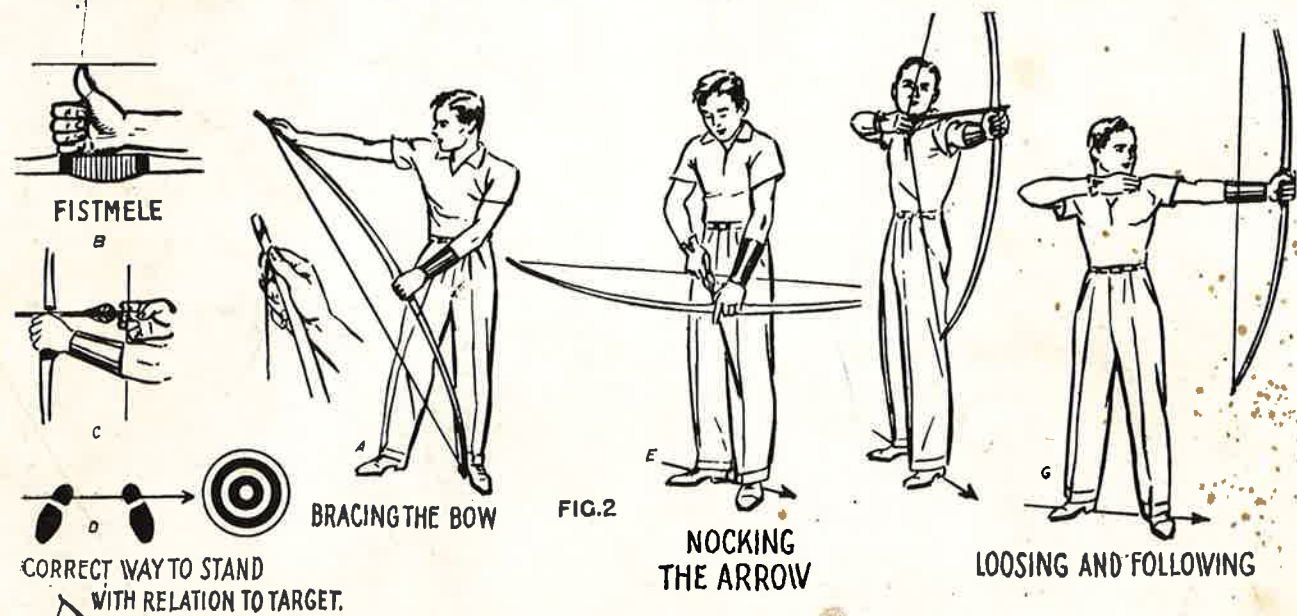
Archery hunting equipment differs from that of target equipment in that a hunting bow will weigh (pounds strength at full draw position) from 20 to 40 pounds more than a target bow; hunting arrows are larger and are equipped with blunt steel heads or sharp steel broadheads designed to kill both small and large game. Also, the feathers on the hunting arrows are larger in order to better guide the heavy arrow.

CARE OF EQUIPMENT

L. C. Whiffen precision equipment will give you maximum service providing it is cared for properly. The following suggestions on the care of archery equipment will preserve its quality and precision.

Bows:

1. If other persons are permitted to shoot your bow make sure that arrows of proper length are used, otherwise the bow may be overdrawn and broken or injured.
2. Always unstring your bow after shooting, as otherwise it will take a permanent set and impair the cast. A bow is said to follow the string when it does not straighten when unstrung.
3. Do not try to straighten a bow when it is unstrung.
4. Do not keep your bow in a steam-heated or moist room. Lay bow on flat of back or suspend rather than stand on end.



5. In cold weather do not pull your bow to full draw position until it has been flexed gradually. Sudden strain on cold wood is liable to cause it to splinter.
6. After shooting, rub bow with wax and dry cloth. Strings that are not latexed should be waxed.
7. Be careful not to overdraw your bow with an arrow too long for it; and never pull your bow to full draw position without an arrow on the string. To do so may overdraw and break the bow.
8. Never snap string of bow more than three or four inches without an arrow in shooting position.

Arrows:

1. After shooting, clean arrows of dirt, then wax to preserve finish and wood.
2. Keep steel piles free of rust by rubbing with oil-soaked cloth.
3. Keep arrow shafts straight. Heat shafts over a hot plate—never over open flame, and hold in left hand and straighten over the base of the left thumb.
4. Do not leave arrows in quiver; feathers tend to become pressed out of shape.

The above suggestions—if carried out—will assure the archer of the very best performance from his bow and arrows.

HOW TO SHOOT

There are seven points to concentrate upon when shooting the bow and arrow. They are: Standing—Nocking—Drawing—Anchoring—Aiming—Loosing—Following Through. As in most sports, the one essential requisite for expert performance is to remain relaxed in the proper muscles. Tenseness in the hand which holds the bow and in the hand drawing the ar-

row will destroy accuracy in the release which in turn will deflect the course of the arrow.

Standing: Stand with feet well apart to afford a firm stance and with left side facing the target. The bow, of course, is held in the left hand unless the archer is lefthanded, in which case, the archer stands with his right side toward the target with his bow in his right hand. When a comfortable stance has been achieved, mark the position of the feet by sticking markers in the ground at the tip of the toes. (See aiming ensemble, page 28.) This enables the archer to stand in the same tracks so that the point-of-aim will always be sighted from the same position.

Nocking: To fit the arrow to the bowstring, hold the bow horizontally in left hand; then grasp the arrow with thumb and forefinger of the right hand and place shaft across arrow-plate of the bow. Then turn the arrow until the cock feather is perpendicular to the bow string. Fit the nock of the arrow onto the bowstring. Then, with the right palm up, hook the forefinger under bow string to the right of the nock; then hook the middle finger and ring finger under the bowstring to the left of the nock. After doing this, the bow string should cut through the lower portion of the first joint about one-half inch from the tips of the three fingers hooked around bow string. Take precaution not to squeeze the nock of the arrow with the forefinger and middle finger. Just hold them close enough to keep the arrow on the string. When this procedure is completed, the bow is then swung to a vertical position ready for drawing. Draw the bow gently about 2 inches to tense the string on all three fingers.

Drawing: The bow handle is never gripped tightly. Instead, the bow rests in the hand against the base of the thumb and is held in place by the tension of the draw. The fingers are held lightly around the bow handle just to keep it from falling when the arrow is released. In order to get the left arm and hand in position for drawing, raise the left arm leaving a very slight bend in the elbow. Then with the drawing hand placed properly on the bow string, pull back slowly. At this point of drawing, it is highly important that the hand and forearm act only as a connecting link between the bow string and the shoulder muscles which actually do the pulling. This enables the fingers and hand to remain relaxed so that the proper release can be acquired.

Anchoring: Pull the bow string and nock of the arrow until the V-shape of the right hand (between the thumb and forefinger) fits snugly against the right jawbone. In this position, the tip of the forefinger should be near the point of your chin. In this fulldraw

position, it is desirable to anchor the V-shape of the right hand solidly against the right jawbone. This position is held until the archer has placed the point of the arrow well on the point-of-aim.

Aiming: To sight the point-of-aim quickly, it is best to raise the bow arm slowly as the full draw position is being made. This allows the archer to keep his aiming eye on the point-of-aim while bringing the arrow into line for the shot. Immediately after coming to full draw position, look over the point of your arrow with your right eye and line it up with the point-of-aim and the bull's-eye.

When this alignment has been made perfectly, the archer is then ready for the release.

Loosing: To properly release an arrow from the bow string, the archer need only to relax his three drawing fingers and let the tension of the bow pull the string away from the three fingers. This, of course, releases the arrow.

Following Through: To follow through so as not to deflect the flight of the arrow, keep the bow arm extended in the position used in the full draw and keep the drawing hand in position on the jawbone and chin. By doing this, all undue movement is eliminated so that the arrow can pursue a straight flight to the bull's-eye.

How to Withdraw Arrow From Target: In order to keep from bending the arrows on pulling them out of the target, place the left hand against the target face near the arrow. Then using the right hand, withdraw the arrow in line with the angle penetration. If the arrow struck through the target up to the feathers, pull arrow out from back of target so that the feathers will not be injured.

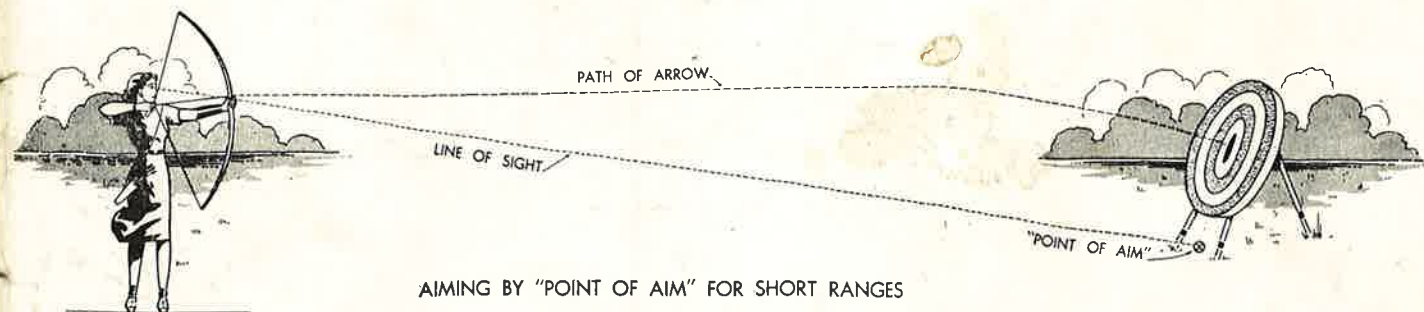
THE MOST POPULAR ARCHERY ROUNDS

For Men: York Round: 72 arrows at 100 yards, 48 at 80 yards, and 24 arrows at 60 yards. **American Round:** 30 arrows at 60 yards, 30 at 50 yards, and 30 at 40 yards.

For Women: National Round: 48 arrows at 60 yards, and 24 arrows at 50 yards. **Columbia Round:** 24 arrows at 50 yards, 24 at 40 yards, and 24 at 30 yards.

For Juniors: (Young people under 16). Junior American Round for boys: 30 arrows at 50 yards, 30 at 40 yards, and 30 at 30 yards. **Junior Columbia Round for Girls:** 24 arrows at 40 yards, 24 arrows at 30 yards, and 24 at 20 yards.

In all of the above rounds the standard 48 in. target is used. The value of the target rings are as follows: The gold 9, the red 7, the blue 5, the black 3, and the white 1.



AIMING BY "POINT OF AIM" FOR SHORT RANGES

"Range Tested"