

## Manufacturing Rep Company

A collaborative gateway to sustainable, compliant and cost efficient building envelope products and assemblies.

Walls

Roofs

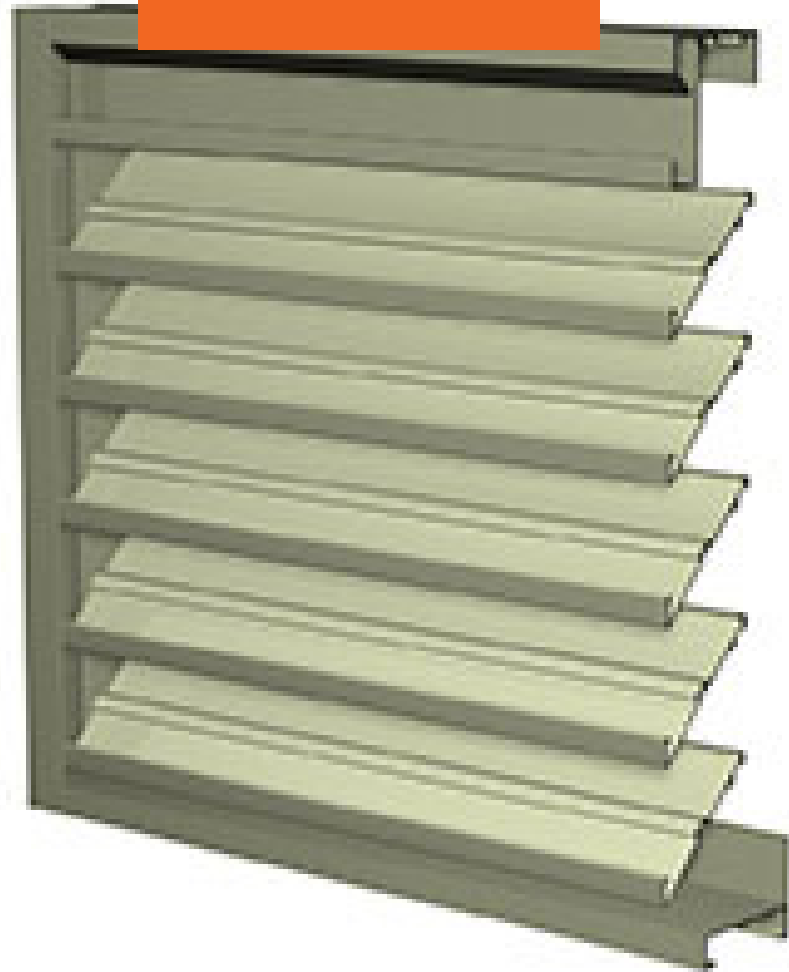
Foundations



[www.schwabgroup.net](http://www.schwabgroup.net)



Louvers



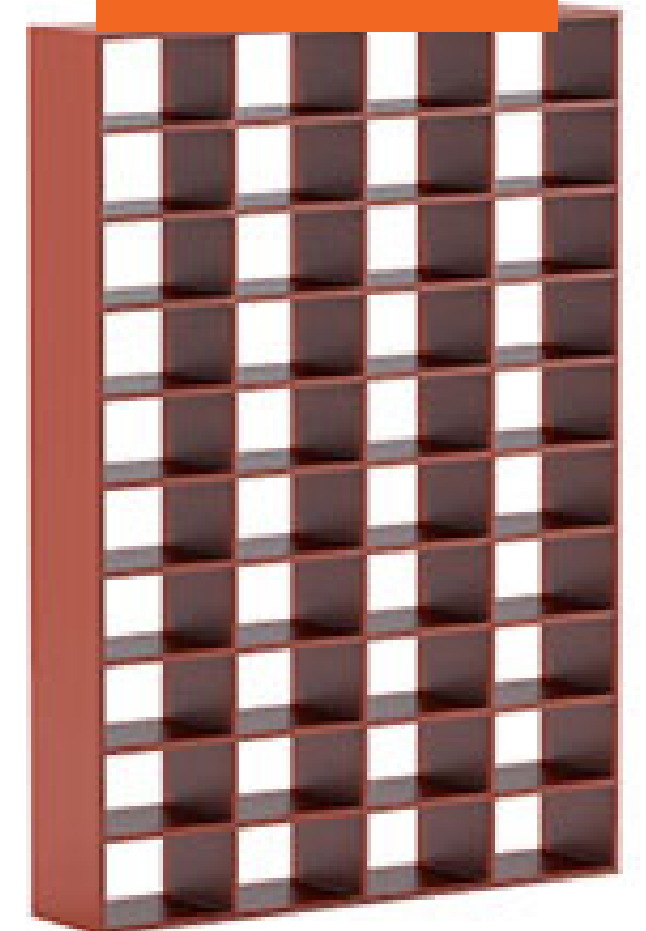
Sun  
Controls



Louver  
Screens

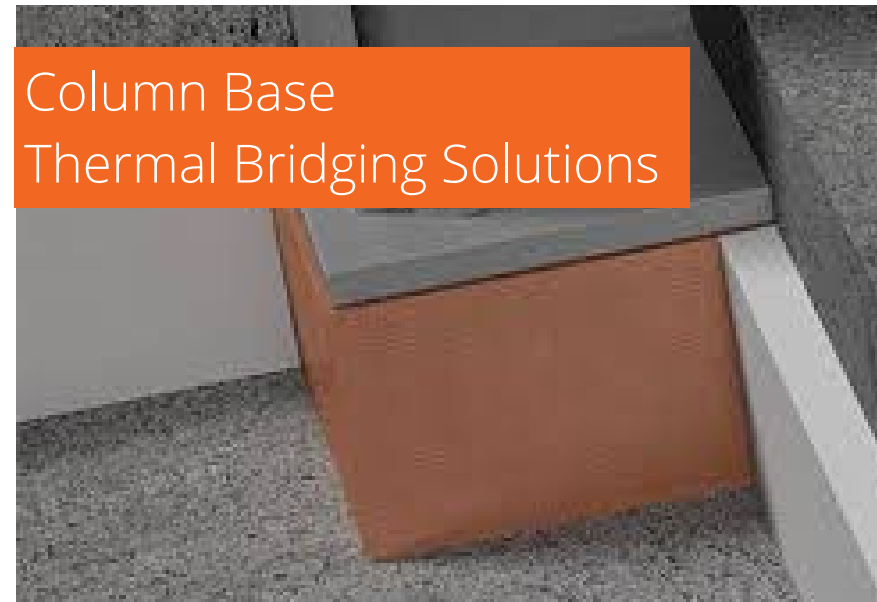


Grilles

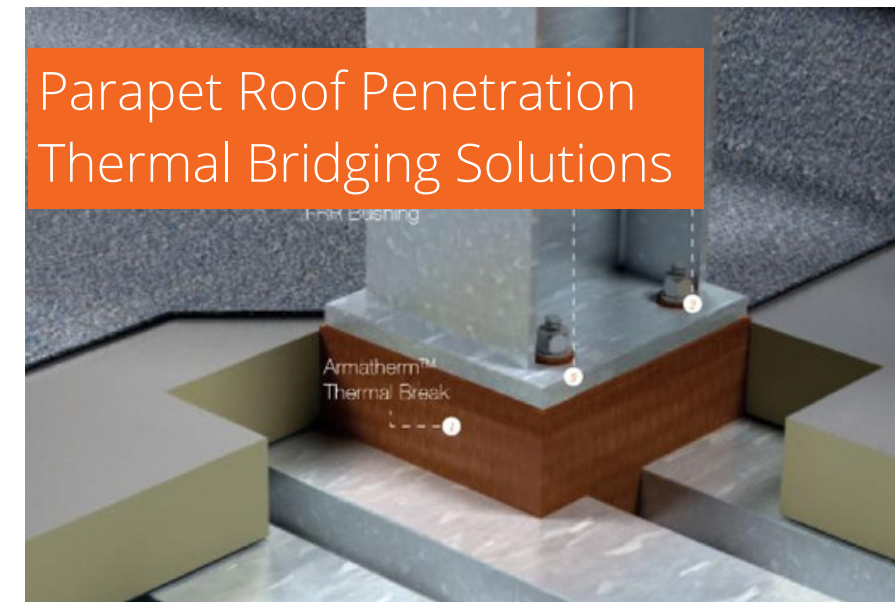




Cladding/Wall Panel  
Thermal Bridging Solutions



Column Base  
Thermal Bridging Solutions



Parapet Roof Penetration  
Thermal Bridging Solutions



Foundation Wall  
Thermal Bridging Solutions

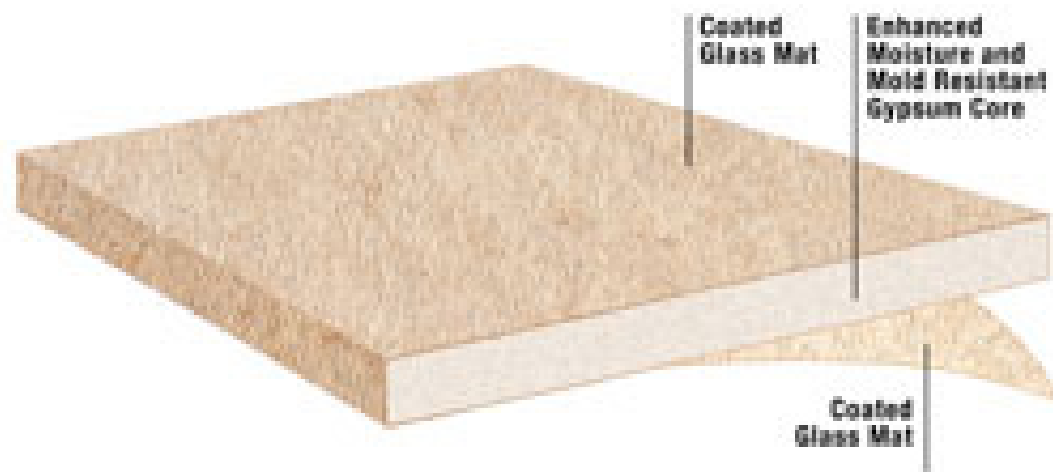


Masonry Shelf Angle  
Thermal Bridging Solutions

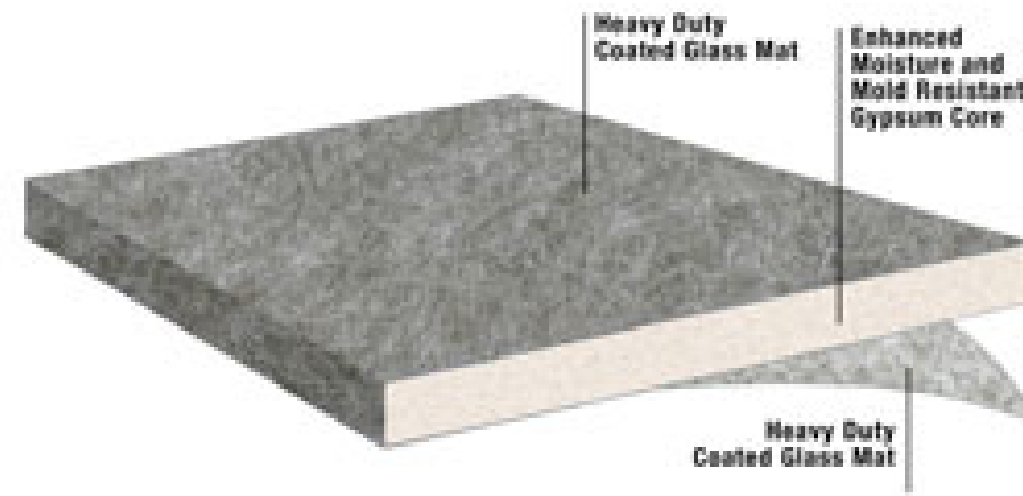


Steel Balcony/Canopy  
Thermal Bridging Solutions

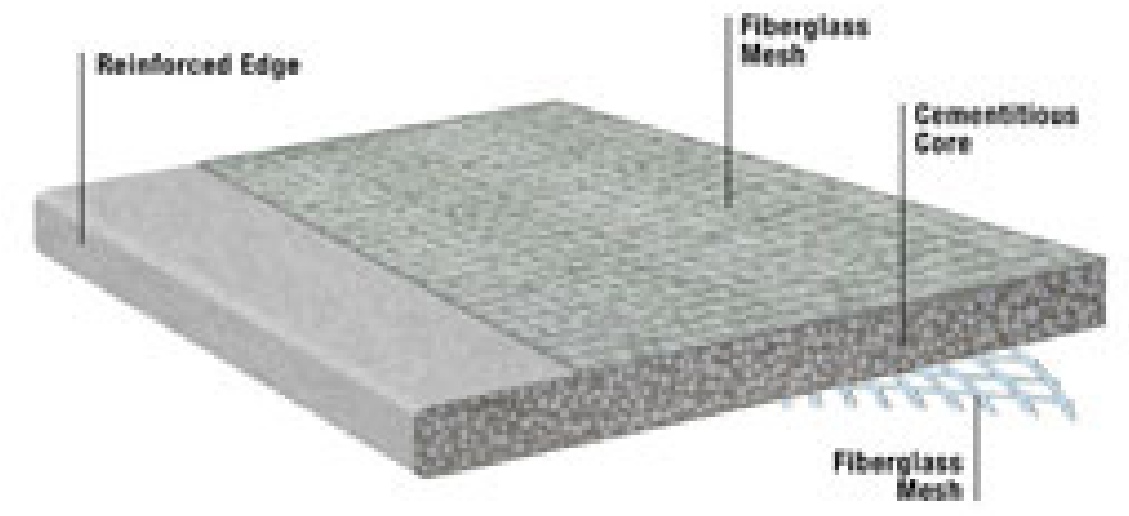




DEXcell Glass Mat  
Roof Board



DEXcell FA Glass Mat  
Roof Board



DEXcell Cement  
Roof Board





Hybrid



Green



Simulated Metal



## FiberTite's KEE Roofing Membranes Stand The Test of Time

FiberTite has been protecting buildings for more than 35 years. FiberTite is tougher, lighter and more flexible than other roofing options. Their Kee membranes have proven themselves in all conditions across the country.

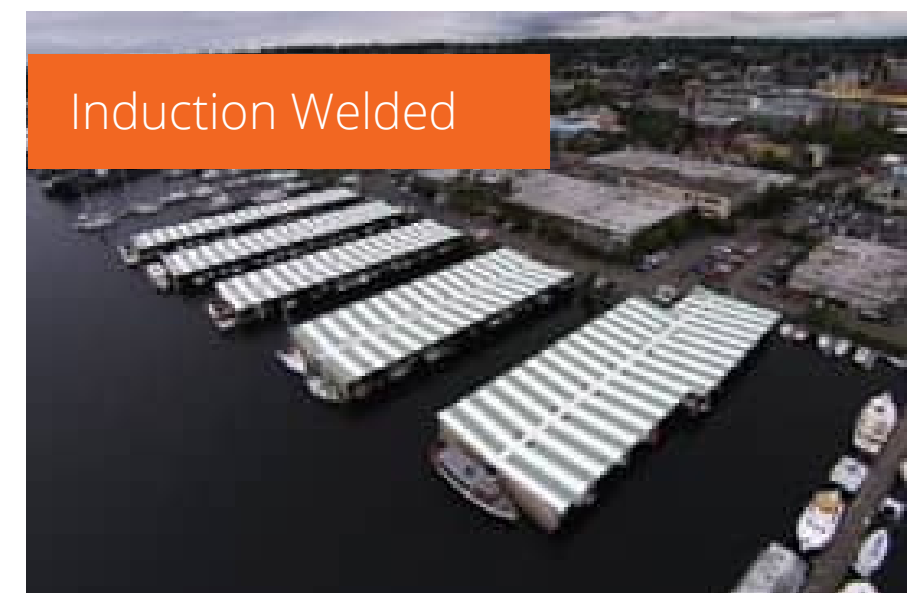
Mechanically  
Attached



Adhered

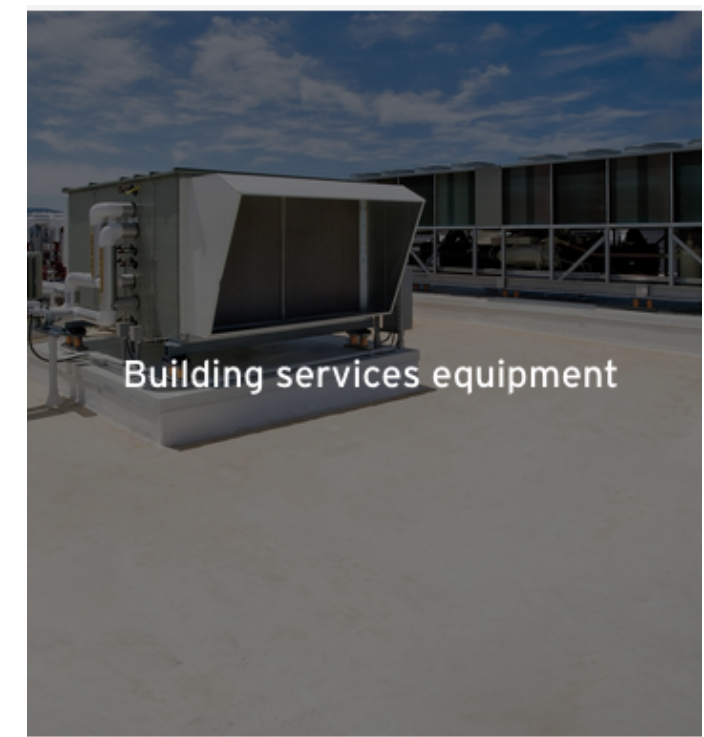
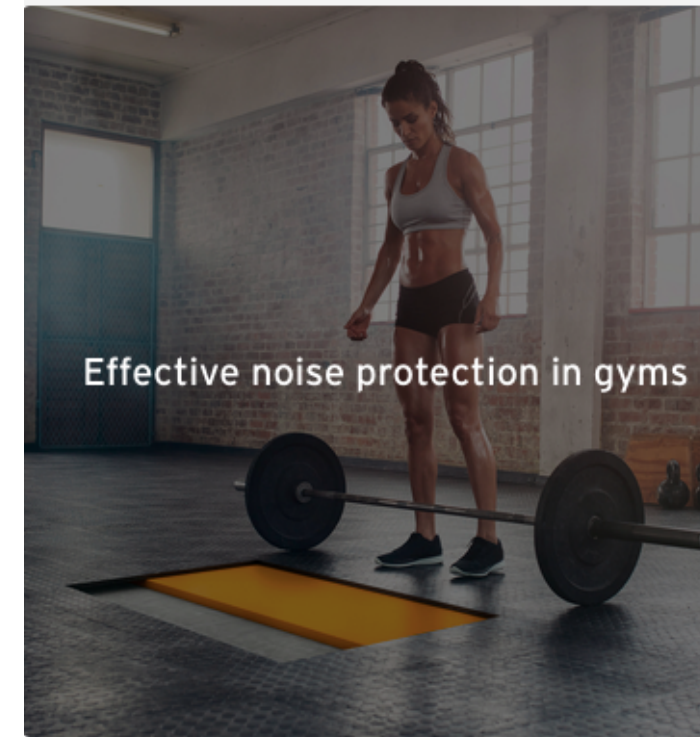
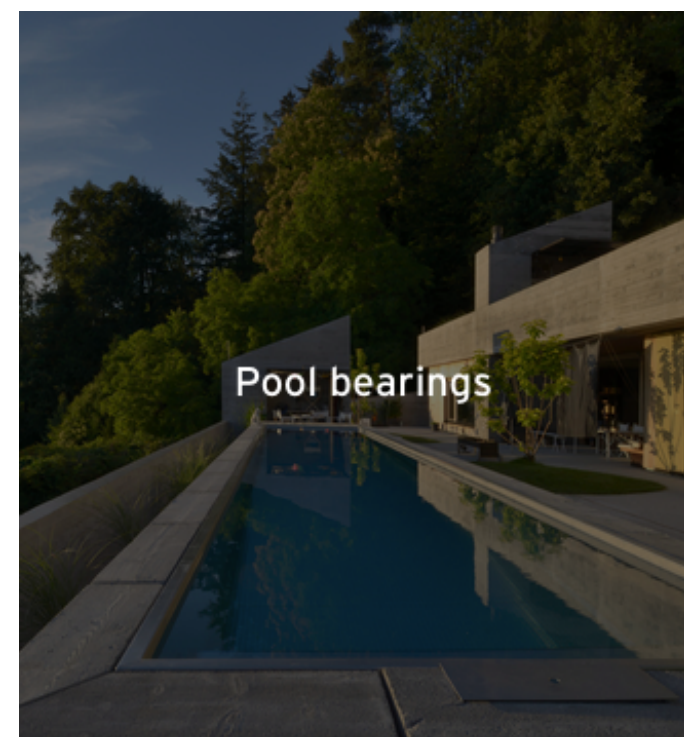
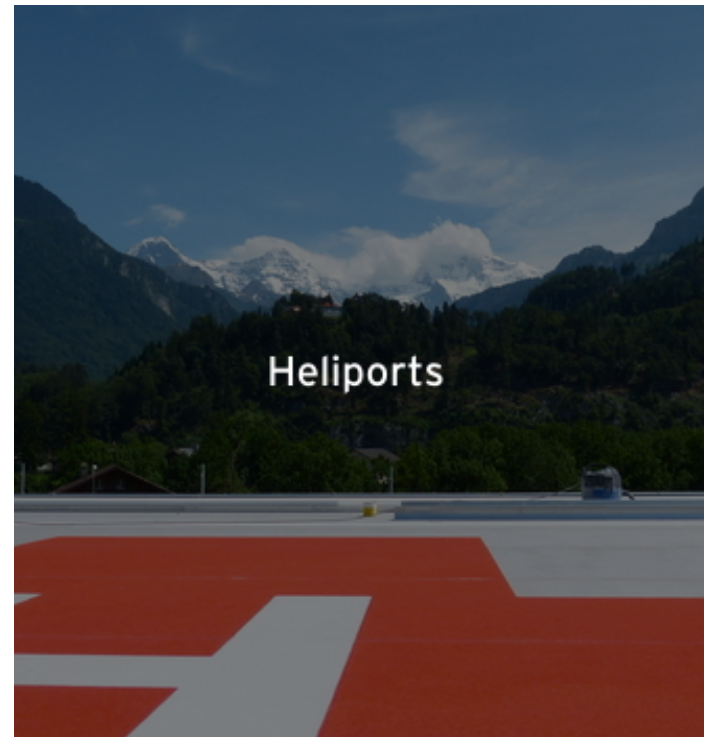
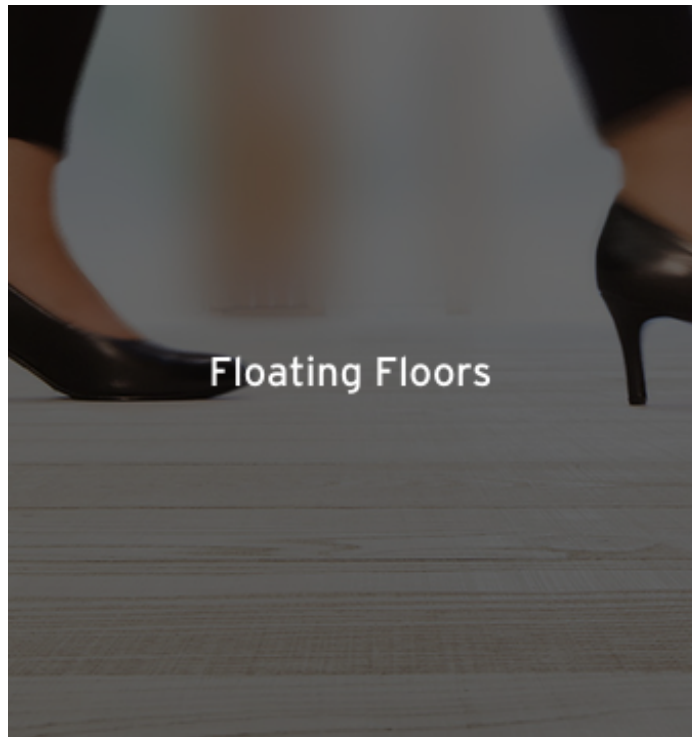


Induction Welded





## Innovative sound control in the construction sector

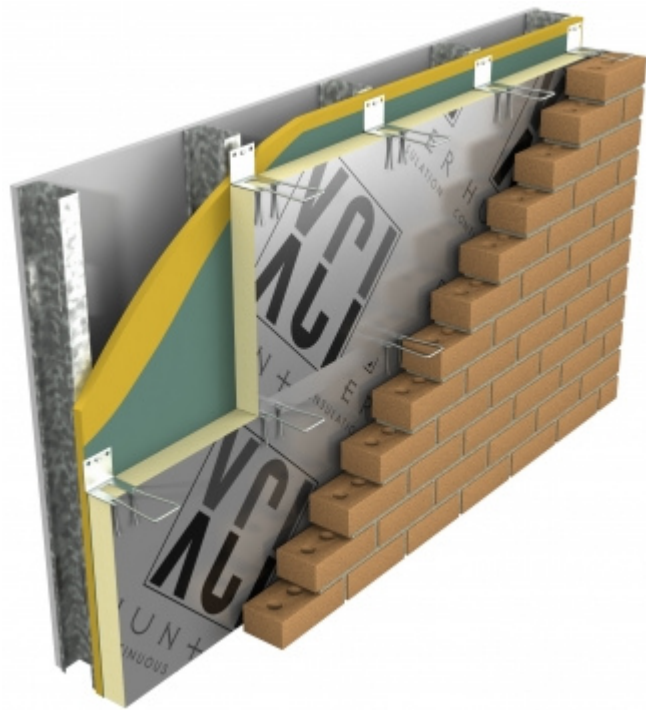




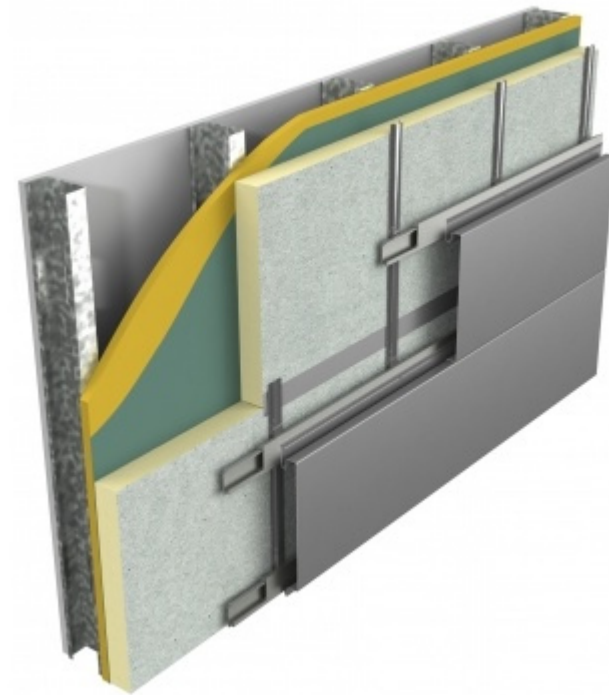


HUNTER  
CONTINUOUS INSULATION

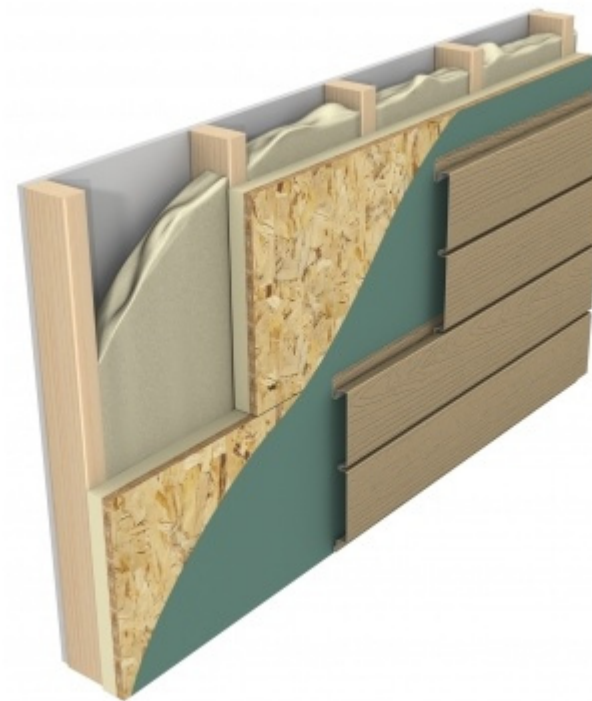
Hunter Xci Wall Polyiso is the leading insulation choice due to its R-Value, energy efficiency, fire performance, availability, code compliance and compatibility within many NFPA compliant wall assemblies.



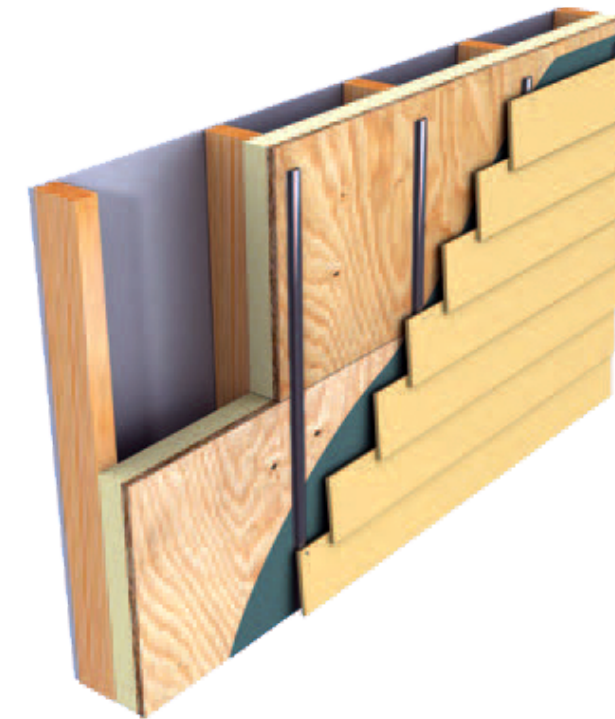
XCI Foil  
XCI Foil Class A



XCI CG  
XCI CG Class A



XCI NB



XCI Ply  
XCI Ply Class A



XCI 286





HUNTER  
CONTINUOUS INSULATION

Put the complete Hunter Xci AEGIS Wall System™ to work for you. Hunter Panels has you covered with a single-source solution of products designed to make your next project come together simply and efficiently.



**Hunter Panels** Xci VP-SA WRB

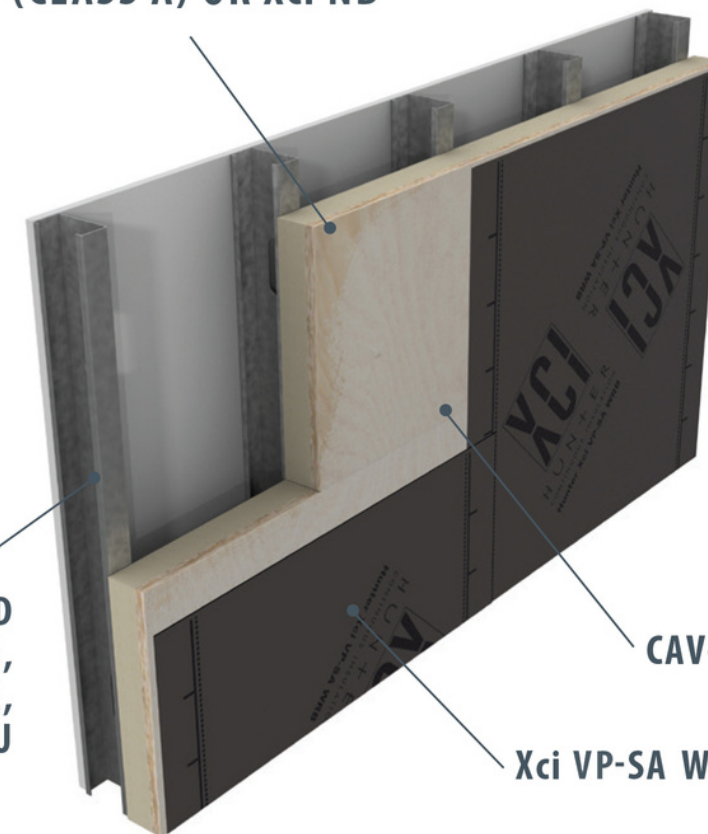
Vapor Permeable Self-Adhering Air and Water Resistive Barrier

HUNTER PANELS Xci PLY,  
Xci PLY (CLASS A) OR Xci NB

STEEL AND  
WOOD STUDS,  
CONCRETE,  
CMU

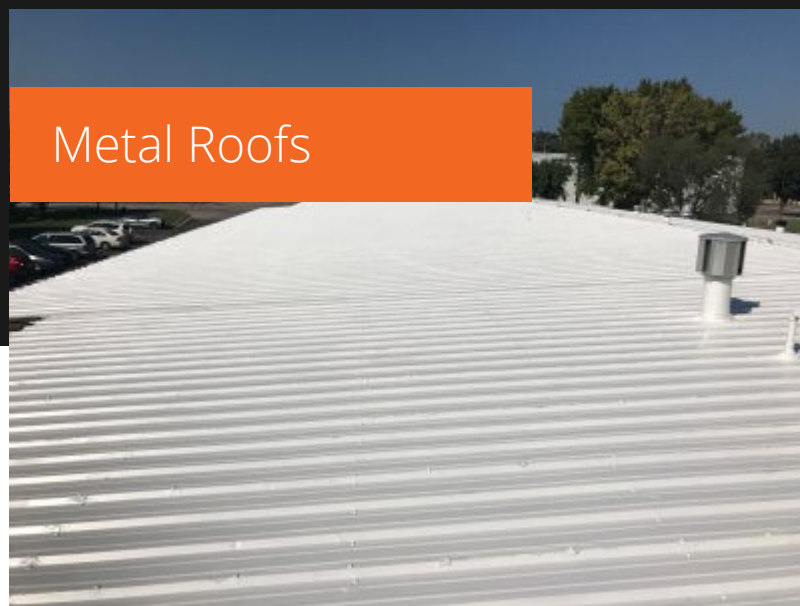
CAV-GRIP

Xci VP-SA WRB





Metal Roofs



## Innovative Coatings Since 1978

For over 40 years, Inland Coatings has been the trusted solution for roofing maintenance and repair. Inland offers the following roof coating products - Rubber, Polyurethane, Acrylic & Asphaltic.

Hypalon Single Ply  
Roofs



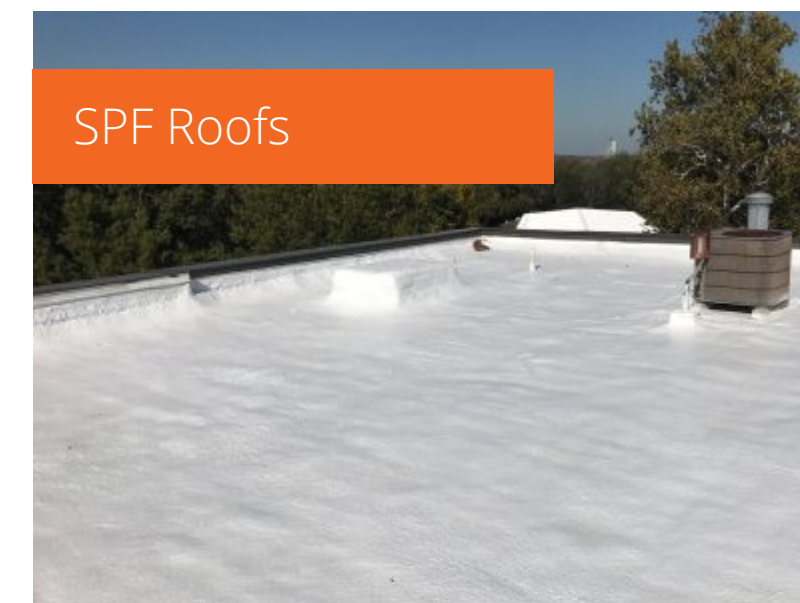
EPDM Single Ply  
Roofs



Modified Bitumen  
& BUR Roofs



SPF Roofs



TPO Single Ply  
Roofs

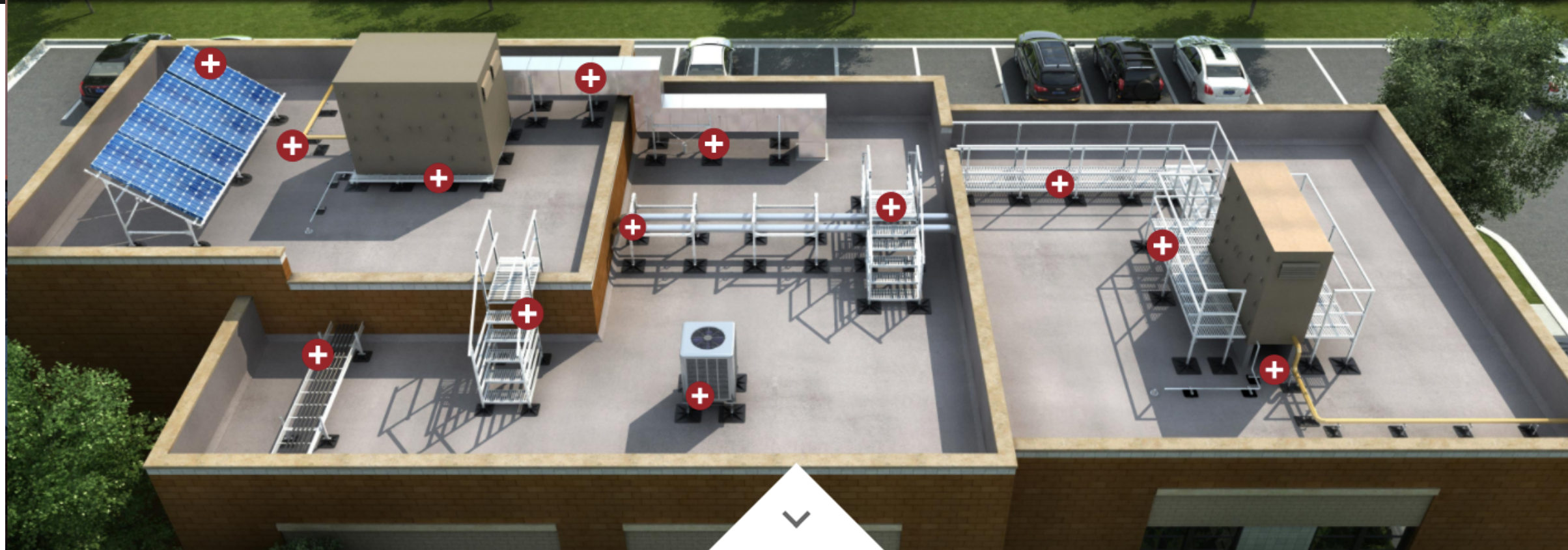




# PHP<sup>®</sup> SYSTEMS/DESIGN

.....

BUILD IT RIGHT.



Pipe Supports



Duct Supports



Equipment Supports



Cable Tray Supports



Walkways / Crossovers



Stairs / Ramps



Platform Systems



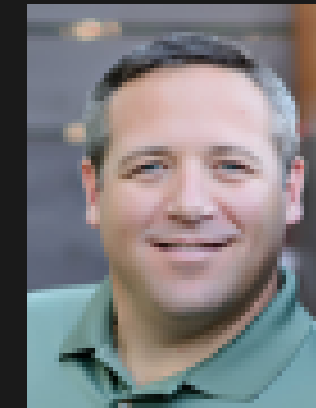
Solar Panel Mounts



 <b>Cat 5</b>	 <b>Cat 5 Rain Screen</b>	 <b>Spray Wrap MVP</b>
 <b>VB (Vapor Barrier)</b>		 <b>FastFlash</b> Liquid flashing membrane







## Manufacturing Rep Company

A collaborative gateway to sustainable, compliant and cost efficient building envelope products and assemblies.

Walls

Roofs

Foundations



[www.schwabgroup.net](http://www.schwabgroup.net)