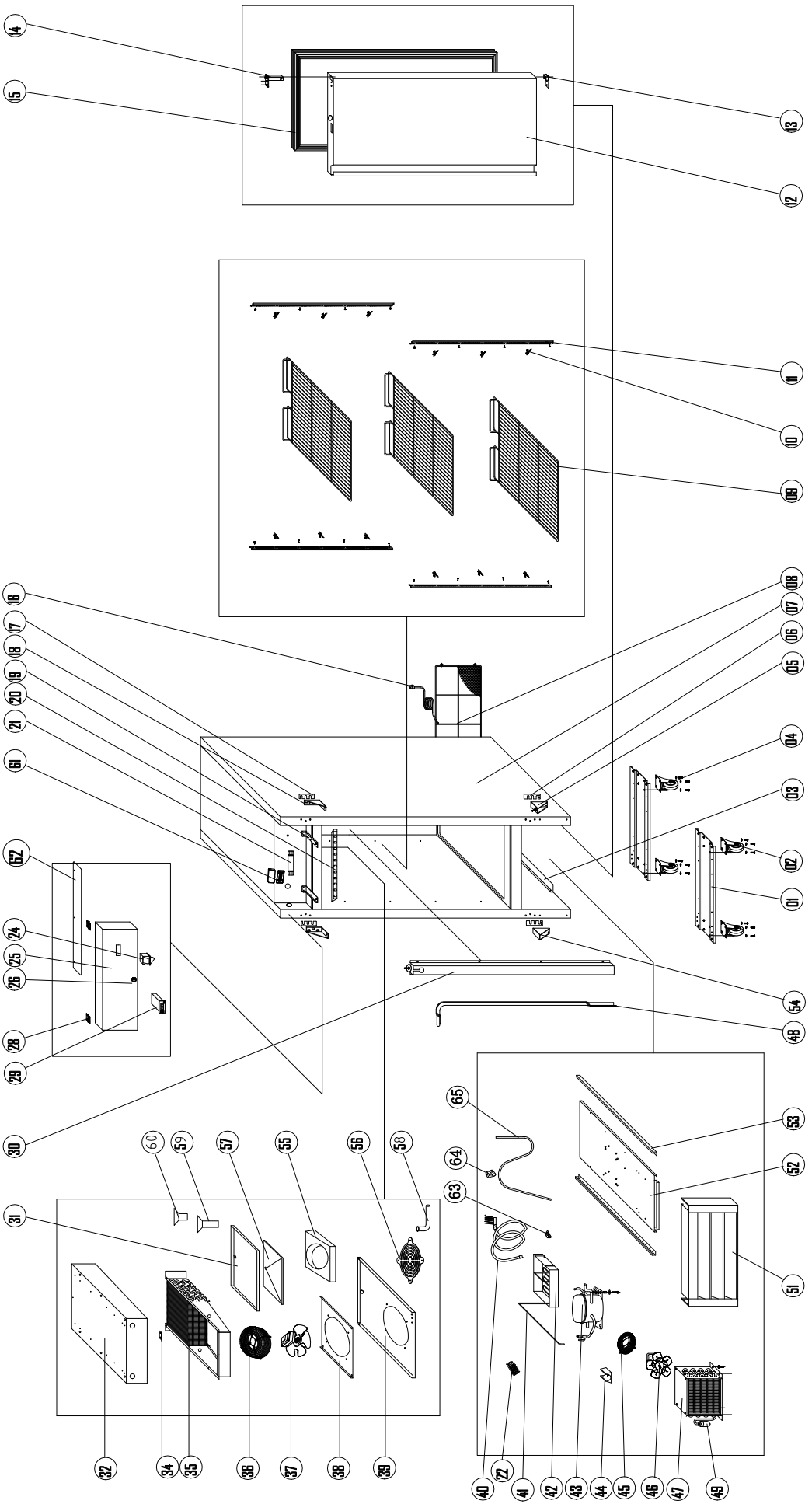




PARTS LIST
REACH-IN MODELS
CR1-HC, CR2-HC, & CR3-HC

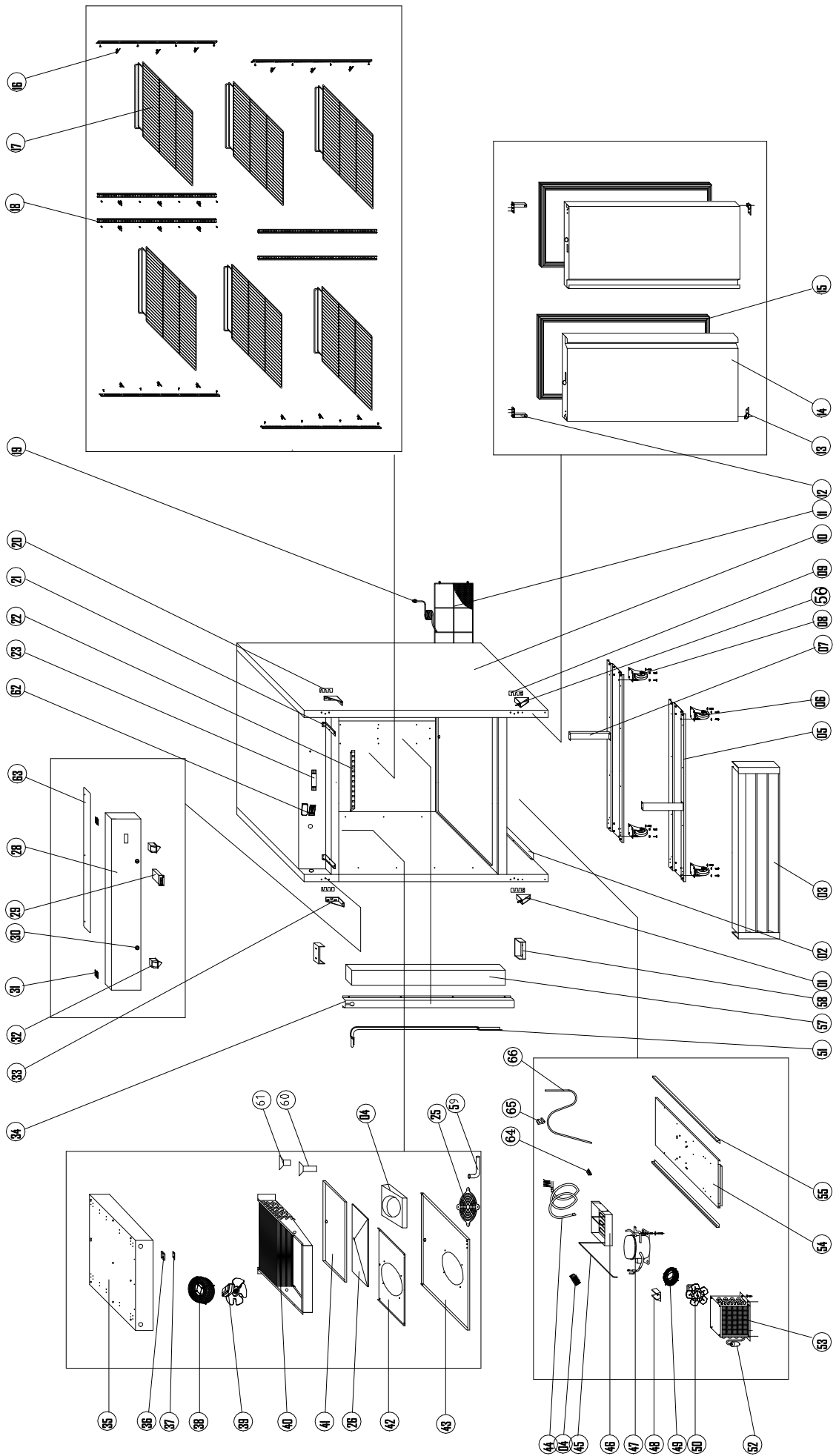


**Above picture of CR1-HC
(R290)**



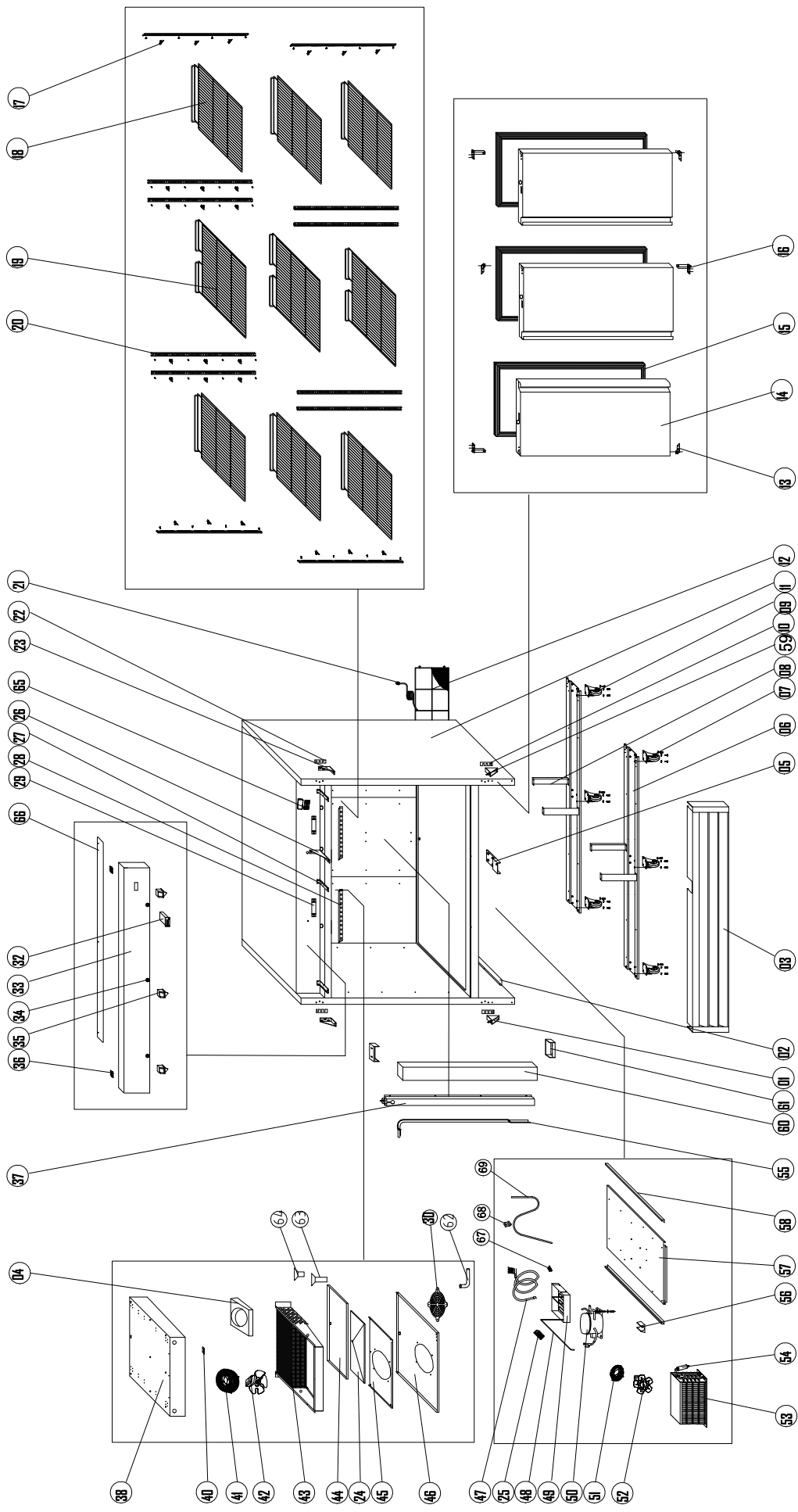
CR1-HC

| NO. | Entrée # | NAME | QTY. |
|-----|-------------|--|------|
| 1 | N/A | Support Of Unit Board | 2 |
| 2 | H00316 | SWIVEL CASTER 4" W/BRAKE | 2 |
| 3 | N/A | Baffle Plate | 1 |
| 4 | H00317 | SWIVEL CASTER 4" W/O BRAKE | 2 |
| 5 | H00333 | Door Hinge /Down Right | 1 |
| 6 | H00329 | SHIM, LOWER | 2 |
| 7 | N/A | BODY | 1 |
| 8 | H00313 | COVER, LOWER REAR COMPARTMENT | 1 |
| 9 | H00307 | SHELF | 3 |
| 9 | H00307-C | SHELF W/4 CLIPS | 3* |
| 10 | C3234860 | PILASTER CLIP | 12 |
| 11 | H00342 | PILASTER | 4 |
| 12 | H00324-3 | DOOR, SOLID, BOTTOM MOUNT (HC) | 1 |
| 13 | H00326 | HINGE AXIS JACKET, BOTTOM | 1 |
| 14 | H00328 | HINGE CARTRIDGE, SELF CLOSING | 1 |
| 15 | H00325-3 | GASKET, DOOR BOTTOM MOUNT (HC) | 1 |
| 16 | C2194684 | POWER CORD, 14AWG/NEMA 5-15P | 1 |
| 17 | H00329-1 | SHIM, UPPER HINGE | 2 |
| 18 | H00331 | HINGE, UPPER RIGHT | 1 |
| 18 | H00330 | HINGE, UPPER LEFT | * |
| 19 | N/A | Fixed Clip Of Front Panle | 2 |
| 20 | C2194688 | LED LIGHT STRIP (REACH-IN) (LED2835, 2.4W, 24 VDC) | 1 |
| 21 | H104070118 | LED POWER SUPPLY | 1 |
| 22 | H00215 | TERMINAL BLOC, 5 POLL | 1 |
| 24 | C2194677 | DOOR SWITCH 3 PIN WHITE (HC-050K4) | 1 |
| 25 | H5114000647 | SHROUD, UPPER | 1 |
| 26 | H00340 | DOOR LOCK | 1 |
| 28 | H00321 | HINGE, UPPER SHROUD | 2 |
| 29 | H00219-1 | TEMPERATURE CONTROL BOARD (DIXELL XW03K) | 1 |
| 29 | HC0219-2 | TEMPERATURE CONTROL DISPLAY (DIXELL CX50) | 1 |
| 30 | H00311 | CHANNEL SUCTION LINE COVER | 1 |
| 31 | HC0142 | EVAPORATOR DRIP PAN | 1 |
| 32 | N/A | EVAPORATOR PAN | 1 |
| 34 | H00335 | Sensor Fixed Clip | 1 |
| 35 | HC0349R | EVAPORATOR COIL | 1 |
| 36 | H00112 | FAN GUARD, EVAPORATOR, WHITE | 1 |
| 37 | HC0116-2 | EVAPORATOR FAN MOTOR (IQC3608-010315/A03 L-600) | 1 |
| 38 | HC0131 | EVAPORATOR FAN MOTOR SUPPORT | 1 |
| 39 | HC0151 | EVAPORATOR FAN COVER, WHITE | 1 |
| 40 | HDV0011B | HELIX SUCTION PIPE+CAPILLARY B | 1 |
| 41 | HC0149 | SUCTION PIPE | 1 |
| 42 | C30014 | CONDENSER DRAIN BOX | 1 |
| 43 | HC0001F | COMPRESSOR (EM2X3117U) W/ FILTER DRIER | 1 |
| 44 | N/A | Drier Support | 1 |
| 45 | H00113-1 | FAN GUARD BLACK (CONDENSER) | 1 |
| 46 | H00110 | CONDENSER FAN MOTOR, 9W M4Q045-CA27-04/CA01 | 1 |
| 47 | HC0347 | CONDENSER COIL | 1 |
| 48 | HDV008A | VERTICAL SUCTION PIPE+CAPILLARY A | 1 |
| 49 | H00341 | FILTER DRIER | 1 |
| 51 | H00337 | BOTTOM SHROUD (ENTRÉE) | 1 |
| 51 | H00337 | BOTTOM SHROUD (CENTAUR PLUS) | 1 |
| 52 | N/A | CONDENSER PAN | 1 |
| 53 | N/A | GUIDE RAIL | 2 |
| 53 | N/A | GUIDE RAIL | |
| 54 | H00332 | Door Hinge /Down Left | 1 |
| 55 | N/A | AIR GUIDE | 1 |
| 56 | H00112-1 | EVAPORATOR FAN GUARD | 1 |
| 57 | N/A | SUPPORT PAN | 1 |
| 58 | H00336 | DRAIN JOINT | 1 |
| 59 | G30002 | DRAIN PIPE FITTING | 1 |
| 60 | G30001 | DRAIN PIPE FITTING | 1 |
| 61 | H108140044 | CONTROL PROTECTOR | 1 |
| 61 | H108140043 | CONTROL PROTECTOR COVER | 1 |
| 62 | N/A | TOP COVER | 1 |
| 63 | N/A | DRAIN BRACKET | 1 |
| 64 | N/A | DRAIN HOLDER | 1 |
| 65 | HC0391 | DRAIN PIPE | 1 |



CR2-HC

| NO. | Entrée # | NAME | QTY. |
|-----|------------|--|------|
| 1 | H00332 | Door Hinge /Down Left | 1 |
| 2 | N/A | Baffle Plate | 1 |
| 3 | H00338-1 | LOWER SHROUD, 2DRS BOTTOM MOUNT | 1 |
| 4 | N/A | AIR GUIDE | 1 |
| 5 | N/A | LOWER SUPPORT PANEL | 2 |
| 6 | H00316 | SWIVEL CASTER 4" W/BRAKE | 2 |
| 7 | N/A | STRUCTURE SUPPORT | 2 |
| 8 | H00317 | SWIVEL CASTER 4" W/O BRAKE | 2 |
| 9 | H00329 | SHIM, LOWER | 2 |
| 10 | N/A | BODY | 1 |
| 11 | H00314 | COVER, LOWER REAR COMPARTMENT | 1 |
| 12 | H00328 | HINGE CARTRIDGE, SELF CLOSING | 2 |
| 13 | H00326 | HINGE AXIS JACKET, BOTTOM | 2 |
| 14 | H00324-3 | DOOR, SOLID, BOTTOM MOUNT (HC) | 2 |
| 15 | H00325-3 | GASKET, DOOR BOTTOM MOUNT (HC) | 2 |
| 16 | C3234860 | PILASTER CLIP | 24 |
| 17 | H00308 | SHELF, LEFT OR RIGHT | 6 |
| 17 | H00308-C | SHELF, LEFT OR RIGHT W/4 CLIPS | * |
| 18 | H00342 | PILASTER | 8 |
| 19 | C2194684 | POWER CORD, 14AWG/NEMA 5-15P | 1 |
| 20 | H00329-1 | SHIM, UPPER HINGE | 2 |
| 21 | N/A | Fixed Clip Of Front Panle | 2 |
| 22 | C2194688 | LED LIGHT STRIP (REACH-IN) (LED2835, 2.4W, 24 VDC) | 1 |
| 23 | H104070118 | LED POWER SUPPLY | 1 |
| 24 | H00215 | TERMINAL BLOC, 5 POLL | 1 |
| 25 | H00112-1 | EVAPORATOR FAN GUARD | 1 |
| 26 | N/A | SUPPORT PAN | 1 |
| 28 | HC0319 | SHROUD, UPPER 2DR BTM MT | 1 |
| 29 | H00219-1 | TEMPERATURE CONTROL BOARD (DIXELL XW03K) | 1 |
| 29 | HC0219-2 | TEMPERATURE CONTROL DISPLAY (DIXELL CX50) | 1 |
| 30 | H00340 | DOOR LOCK | 2 |
| 31 | H00321 | HINGE, UPPER SHROUD | 2 |
| 32 | C2194677 | DOOR SWITCH 3 PIN WHITE (HC-050K4) | 2 |
| 33 | H00330 | HINGE, UPPER LEFT | 1 |
| 33 | H00331 | HINGE, UPPER RIGHT | 1 |
| 34 | H00311 | CHANNEL SUCTION LINE COVER | 1 |
| 35 | N/A | EVAPORATOR SUPPORT | 1 |
| 37 | H00335 | Sensor Fixed Clip | 1 |
| 38 | H00112 | FAN GUARD, EVAPORATOR, WHITE | 1 |
| 39 | HC0116-1 | EVAPORATOR FAN MOTOR (IQC3608-010315/A03) | 1 |
| 40 | HC0350R | EVAPORATOR COIL | 1 |
| 41 | H00143.1 | Evaporator Water Pan | 1 |
| 42 | N/A | EVAPORATOR FAN SUPPORT | 1 |
| 43 | H00153 | EVAPORATOR COVER, WHITE | 1 |
| 44 | HDV0010B | HELIX SUCTION PIPE+CAPILLARY B | 1 |
| 45 | HC0149 | SUCTION PIPE | 1 |
| 46 | C30014 | CONDENSER DRAIN BOX | 1 |
| 47 | H00039F | COMPRESSOR (EM2X3125U) W/ FILTER DRYER | 1 |
| 47 | H00228 | START KIT, FOR COMPRESSOR EM2X3125U | * |
| 48 | N/A | FILTER DRIER BRACKET | 1 |
| 49 | H00113-1 | FAN GUARD BLACK (CONDENSER) | 1 |
| 50 | H00110 | CONDENSER FAN MOTOR, 9W M4Q045-CA27-04/CA01 | 1 |
| 51 | H00303 | CAPILLARY TUBE .055" ID X 118.1" L | 1 |
| 52 | H00341 | FILTER DRIER | 1 |
| 53 | HC0347 | CONDENSER COIL | 1 |
| 54 | N/A | CONDENSER PAN | 1 |
| 55 | N/A | GUIDE RAIL | 1 |
| 55 | N/A | GUIDE RAIL | 1 |
| 56 | H00333 | HINGE, LOWER RIGHT | 1 |
| 57 | HC00022 | CENTER MULLION | 1 |
| 58 | HC00112 | CENTER MULLION BRACKET | 2 |
| 59 | H00336 | DRAIN JOINT | 1 |
| 60 | G30002 | DRAIN PIPE FITTING | 1 |
| 61 | G30001 | DRAIN PIPE FITTING | 1 |
| 62 | H108140044 | CONTROL PROTECTOR | 1 |
| 62 | H108140043 | CONTROL PROTECTOR COVER | 1 |
| 63 | N/A | TOP COVER | 1 |
| 64 | N/A | DRAIN BRACKET | 1 |
| 65 | N/A | DRAIN HOLDER | 1 |
| 66 | HC0391 | DRAIN PIPE | 1 |



CR3-HC

| NO. | Entrée # | NAME | QTY. |
|-----|------------|--|------|
| 1 | H00332 | HINGE, BOTTOM LEFT | 1 |
| 2 | N/A | BAFFLE PLATE | 1 |
| 3 | H00339 | LOWER SHROUD, 3DRS | 1 |
| 4 | N/A | AIR GUIDE | 1 |
| 5 | H00334 | HINGE, BOTTOM MIDDLE | 1 |
| 6 | N/A | LOWER SUPPORT CHANNEL | 2 |
| 7 | H00316 | SWIVEL CASTER 4" W/BRAKE | 3 |
| 8 | N/A | STRUCTURE SUPPORT | 4 |
| 9 | H00317 | SWIVEL CASTER 4" W/O BRAKE | 3 |
| 10 | H00329 | SHIM, LOWER | 2 |
| 11 | N/A | BODY | 1 |
| 12 | H00315 | COVER, LOWER REAR COMPARTMENT | 1 |
| 13 | H00326 | HINGE AXIS JACKET, BOTTOM | 3 |
| 14 | H00324-3 | DOOR, SOLID, BOTTOM MOUNT (HC) | 3 |
| 15 | H00325-3 | GASKET, DOOR BOTTOM MOUNT (HC) | 3 |
| 16 | H00328 | HINGE CARTRIDGE, SELF CLOSING | 3 |
| 17 | C234860 | PILASTER CLIP | 36 |
| 18 | H00308 | SHELF, LEFT OR RIGHT | 6 |
| 18 | H00308-C | SHELF, LEFT OR RIGHT W/4 CLIPS | |
| 19 | H00310 | SHELF, MIDDLE | 3 |
| 19 | H00310-C | SHELF, MIDDLE W/4 CLIPS | 3 |
| 20 | H00342 | PILASTER | 12 |
| 21 | C2194684 | POWER CORD, 14AWG/NEMA 5-15P | 1 |
| 22 | H00329-1 | SHIM, UPPER HINGE | 3 |
| 23 | H00330 | HINGE, UPPER LEFT | 1 |
| 23 | H00331 | HINGE, UPPER RIGHT | 1 |
| 24 | N/A | SUPPORT PAN | 1 |
| 25 | H00215 | TERMINAL BLOC, 5 POLL | 1 |
| 26 | H00353 | HINGE, TOP MIDDLE | 1 |
| 27 | N/A | FRONT PANEL CLIP | 3 |
| 28 | C2194688 | LED LIGHT STRIP (REACH-IN) (LED2835, 2.4W, 24 VDC) | 2 |
| 29 | H104070118 | LED POWER SUPPLY | 2 |
| 30 | H00112-1 | EVAPORATOR FAN GUARD | 1 |
| 32 | H00219-1 | TEMPERATURE CONTROL BOARD (DIXELL XW03K) | 1 |
| 32 | HC0219-2 | TEMPERATURE CONTROL DISPLAY (DIXELL CX50) | 1 |
| 33 | HC0320 | SHROUD, UPPER 2DR BTM MT | 1 |
| 34 | H00340 | DOOR LOCK | 3 |
| 35 | C2194677 | DOOR SWITCH 3 PIN WHITE (HC-050K4) | 3 |
| 36 | H00321 | HINGE, UPPER SHROUD | 2 |
| 37 | H00311 | CHANNEL SUCTION LINE COVER | 1 |
| 38 | N/A | EVAPORATOR SUPPORT | 1 |
| 40 | H00335 | SENSOR BRACKET | 1 |
| 41 | H00112 | FAN GUARD, EVAPORATOR, WHITE | 1 |
| 42 | HC0116-1 | EVAPORATOR FAN MOTOR (IQC3608-010315/A03 L-900) | 1 |
| 43 | HC0353R | EVAPORATOR COIL | 1 |
| 44 | H00143.1 | EVAPORATOR DRIP PAN | 1 |
| 45 | N/A | MOTOR SUPPORT, EVAP FAN | 1 |
| 46 | H00153 | EVAPORATOR COVER, WHITE | 1 |
| 47 | HDV0012B | HELIX SUCTION PIPE+CAPILLARY B | 1 |
| 48 | HC0158 | SUCTION PIPE | 1 |
| 49 | C30014 | CONDENSER DRAIN BOX | 1 |
| 50 | HC0009F | COMPRESSOR (NUG90LR) W/ FILTER DRIER | 1 |
| 50 | H00230 | START KIT, FOR COMPRESSOR NUG90LR | * |
| 51 | H00123 | FAN GUARD BLACK (CONDENSER) | 1 |
| 52 | H00120 | MOTOR, CONDENSER FAN, M4Q045-BD03-04/CO6 (5W) | 2 |
| 53 | HC0348 | CONDENSER COIL | 1 |
| 54 | H00341 | FILTER DRIER | 1 |
| 55 | H00305 | CAPILLARY TUBE .063" ID X 177.2" L | 1 |
| 56 | N/A | FILTER DRIER BRACKET | 1 |
| 57 | N/A | LOWER SUPPORT PANEL | 1 |
| 58 | N/A | GUIDE RAIL | 1 |
| 58 | N/A | GUIDE RAIL | 1 |
| 59 | H00333 | HINGE, LOWER RIGHT | 1 |
| 60 | HC00021 | CENTER MULLION | 2 |
| 61 | HC00112 | CENTER MULLION BRACKET | 4 |
| 62 | H00336 | DRAIN JOINT | 1 |
| 63 | G30002 | DRAIN PIPE FITTING | 1 |
| 64 | G30001 | DRAIN PIPE FITTING | 1 |
| 65 | H108140044 | CONTROL PROTECTOR | 1 |
| 65 | H108140043 | CONTROL PROTECTOR COVER | 1 |
| 66 | N/A | TOP COVER | 1 |
| 67 | N/A | DRAIN BRACKET | 1 |
| 68 | N/A | DRAIN HOLDER | 1 |
| 69 | HC0391 | DRAIN PIPE | 1 |



For Tech Support or Parts Call:

1-704-900-2068

Website: <https://www.entree.biz>