

# Access to all of your roofs in the palm of your hand.

Go ahead.....Push the Button.

FCS gives you access to the information on your own terms. Whether you are in your office, at your home or in the field you get to the information you need.



## Sites

Sites gives you access to all your facilities. Search, filter, sort, map and report on the data at the push of a button.



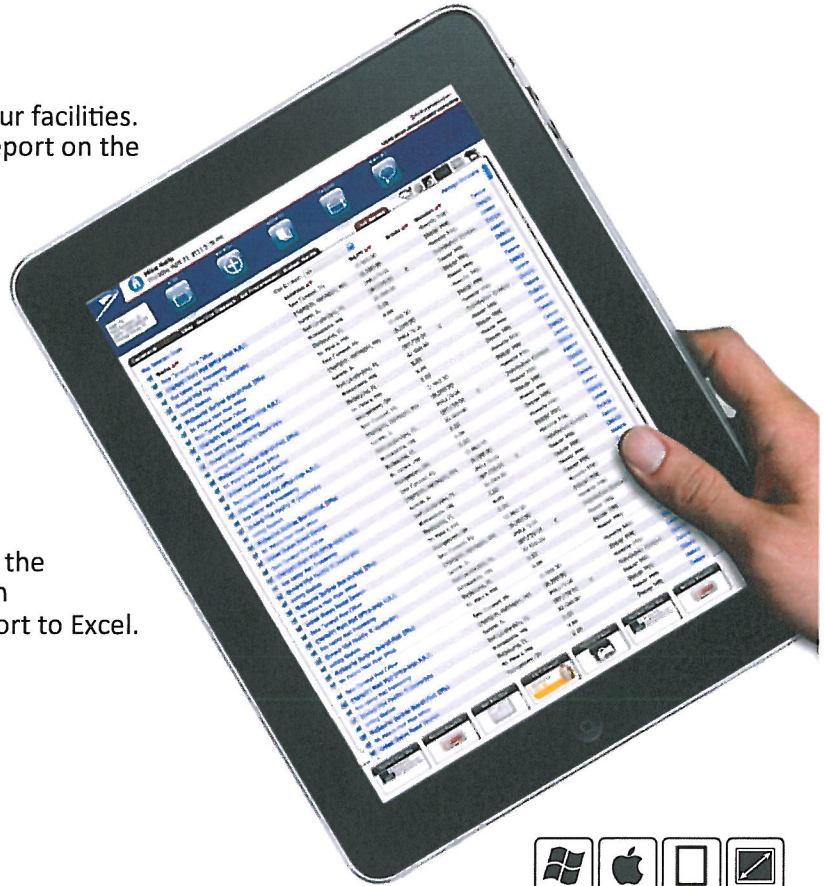
## Dispatch

Dispatch allows you to get the service you need fast.



## Reports

Reports allows you to compile the information you need fast with customizable reports that export to Excel.



## Mobile Applications

FCS has mobile platforms that give users remote access to the properties they are responsible for.



BlackBerry.

Brought to you by:



Kinda' gives new meaning to the term "Remote Control".

 facilitycontrolsystems<sup>tm</sup>

[www.fcscontrol.com](http://www.fcscontrol.com)

# FCS Sites Dashboard gets you to the data you need.



## Sites Dashboard

Sites Dashboard gives you quick access to all of your facilities. Whether you are at your desktop or in the field with a mobile device, the dashboard gets you to the resources you need in real-time.

Email Roof related inquiries in the system to create a permanent record of all corresponded related to that property.



House Account    Lloyd Carr    Bill Edwards    Derek  
 Eddie Aulich    Jake Coghlin    Jim Edwards    Diane  
 Matthew Baggett    Quinn Conn    Danny Evans    Jesse  
 Kathy Bock    Martin Covert    Michael Everett    Jesse  
 Jeff Broderick    David DeLima    Jason Figler    Jack

Company Header:

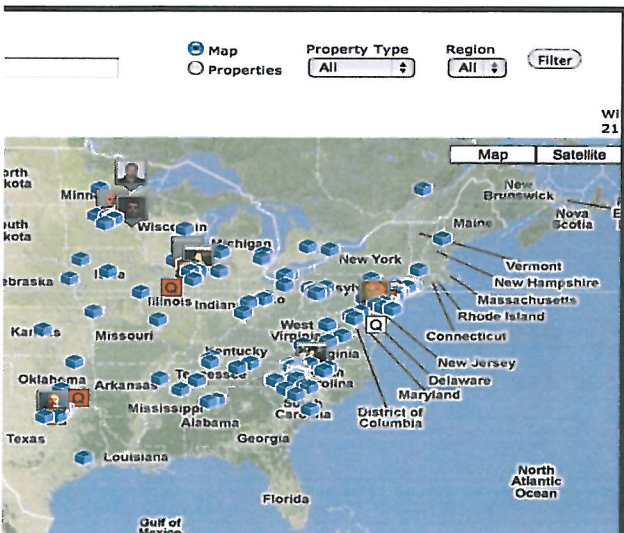
Filter:

Default Text:  Add/Edit Error

Subject:

Message:

Check the properties you are interested in visiting and map their locations at the click of a button.



**Mike Kelly**  
Thursday, April 21, 2011 5:26 PM

Sites: 43  
Roof Sections: 12  
Sq/Ft: 3,095,000.00  
Average Grade: D

SITES

DISPATCH

Comments (1)   Sites   Service Dispatch   Bid Procurement

Map Selected Sites	Site
<input checked="" type="checkbox"/> <b>Name ▲▼</b>	
<input checked="" type="checkbox"/> Bala Cynwyd Post Office	E
<input checked="" type="checkbox"/> Champlin Main Post Office-Area A,B,C,	C
<input checked="" type="checkbox"/> Fox Valley Mail Processing	A
<input checked="" type="checkbox"/> General Mail Facility Ft Lauderdale	F
<input checked="" type="checkbox"/> Loring Station	M
<input checked="" type="checkbox"/> Melbourne Suntree Branch Post Office	M
<input checked="" type="checkbox"/> St. Peters Main Post Office	S
<input checked="" type="checkbox"/> United States Postal Service	Y

Get to the properties you need to access with Search, filter, and sort tools.

**Search Companies**

Company:

Zip:  miles



Print Reports in HTML and PDF formats that email from the system.



Export data to excel to build your own reports in seconds.



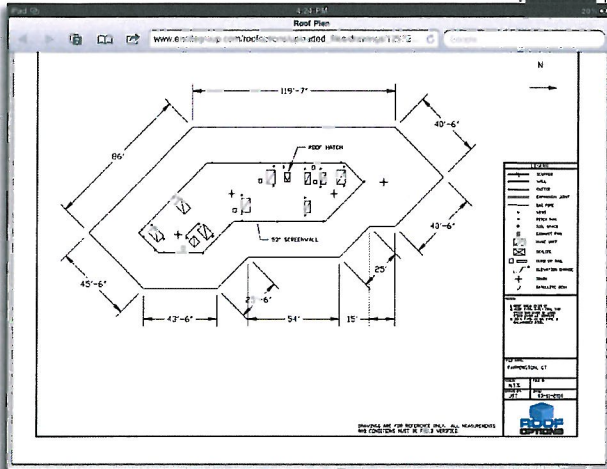
facilitycontrolsystems™  
[www.fcscontrol.com](http://www.fcscontrol.com)

# Easy to access, easy to navigate roof reports.



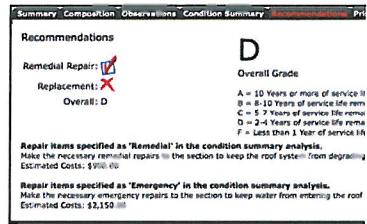
## Site Inspection Reports

The simplicity of the RoofReport is what makes it so popular with facility managers. The information you need in an easy to understand, easy to access format built around a user friendly platform.



Drawings, attachments, warranties and all other correspondence related to the facility

### Recommendations



Recommendations driven by quality supporting information and easy to understand grading.



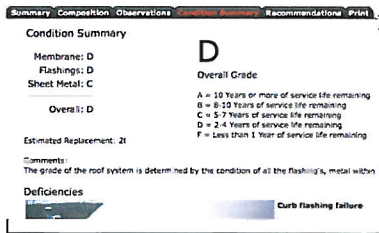
### Observations

Observations in vibrant large pictures and fast loading video.

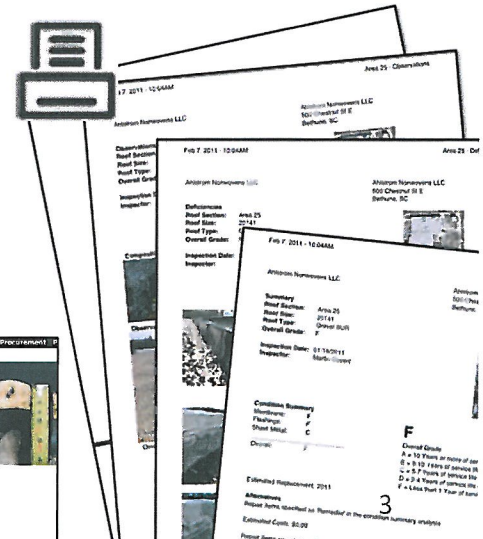


### Condition Summary

Condition summary that quantifies the condition and the expected useful life.



### Composition



facilitycontrolsystems™  
www.fcscontrol.com





# Mobile Inspection App allows for remote auditing in real time.

## Auditing for Consistency

The FCS App connects inspectors to the office so data collection can be monitored in real time.

**1. Dispatch**  
A woman is shown at a computer workstation, representing the dispatch phase.

**2. Section**  
The app screen shows a 'Back' button, a text field for 'Name the roof section' (containing 'showroom'), an 'Estimated sqft' field (containing '50000'), and an 'Est. Install Date' field (containing '1985'). Below is a satellite map with a red box highlighting a specific area.

**3. Observations**  
The screen displays a photo of a roof. Below the photo, there is a 'Name' field (containing 'overview') and a 'Comment' field (containing 'Standing on north side, looking south.').

**4. Composition**  
The screen shows a photo of a roof section. Below the photo, there is a 'Name Test Cut' field (containing 'test cut 1') and a 'Deck' field (containing 'metal'). Under 'Layers', there are two entries: '1" fiberglass' and '4 ply BUR'. An '+Add Layer' button is at the bottom.

**5. Deficiencies**  
The screen shows a photo of a roof with a deficiency. Below the photo, there is a 'Type' field (containing 'Falling Penetration'), 'Remedial' and 'Emergency' radio buttons, a 'Qty' field (containing '5'), and an 'EA' radio button. A 'Description' field contains the text: 'Due to overall age, weathering and UV the penetration has failed.'

**6. Grading**  
The screen shows a 'Condition' field with a dropdown menu (set to 'D'). Below are fields for 'Membrane', 'Flashing', 'Sheet Metal', and 'Overall', each with a dropdown menu (all set to 'D'). There is also a 'Projected roof replacement date' field (containing '2014') and a 'Cost sqft (optional)' field (containing '4.50').

**7. Recommendations**  
The screen shows a 'Recommendation' field with two buttons: 'Repair' and 'Replacement'. Below is a 'Comments' field containing the text: 'Repairs can extend the life a few more years, but would recommend replacing in a few years.'

**8. Request Approval**  
The screen shows a 'Recommendations' section with the text 'You have completed this section.' Below are three buttons: 'Edit This Section', 'Add Additional Sections', and 'Complete Inspection'.

**9. Roof Expert Audit**  
The screen shows a message: 'The FCS Representative has been notified and your report is pending final approval. YOU CAN NOT EMAIL THE REPORT UNTIL APPROVED BY FCS DISPATCHER.'

**10. Corrections**  
The screen shows a message: 'FCS has reviewed the inspection and determined that the following changes are needed for approval: need a few more observation photos on section 1. It appears as if Section 2 is asphalt. Clarify composition. Please click the "Back" button and make the suggested changes, then complete the inspection again to re-submit. If you need to discuss further please call: 1-855-NEED-FCS'

**11. Request Final Approval**  
The screen shows a 'Final Approval' section with the text: 'At this point, your inspection is complete and it is ok to leave the site. Additional changes to the report will need to be made from the main database view. Before a final PDF can be generated and emailed, another approval will be needed by an FCS representative. All repair costs and recommendations will be reviewed.' Below are two buttons: 'Request Final Approval' and 'Exit Inspection'.

**12. Auditing**  
The screen shows a message: 'The data you have collected is being verified by an FCS representative to be sure you will not need to return to gather more information for a complete report. A notification has been sent to the FCS representative and approval is pending. Please stand by... Do not leave the site until approval is complete. If no response within 10 minutes, please call 1-855-NEED-FCS'

The FCS Inspect App guides FCS Resources through the Inspection Process in a step by step methodology. Data is captured in real time and audited authorized office personnel. Reports are generated at the same time the inspection data is captured and are completed prior to the resource coming down the ladder. Reports are viewable from his mobile device in a PDF format.



## 13. PDF Report Generation on Mobile Device.

The smartphone screen shows a PDF report titled '1 of 11' from 'facilitycontrolsystems.com'. The report includes a satellite map of the roof area and other inspection details. A man in a dark shirt and jeans stands next to the phone, pointing at the screen.

# Flexible Online Facility Management Solution

## Facility Control System

FCS is more than just a database to store information. It is a real time Facility Control System. The system becomes the way work is performed and records the actions in real time so that you do not have to go back in the system to enter data to be able to generate the reports you need.

**SIEMENS**  
 Site Name: Rockford Water Technologies Plant  
 Corporate Contact: Al Desdiccio  
 Corporate Sourcing  
 Site Contact: Alan Mera  
 Rockford Water Technologies Plant  
 4669 Shepherd Trail  
 Rockford, IL 61103  
 Site Division: Water Technologies

Section: Parking Lot  
 Size: 140000 sq/ft  
 Overall Grade: C  
 Inspection Date: 04/13/2009  
 Inspector: Derek Gibbs

**SERVICE DISPATCH**

Sites: 43  
 Roof Sections: 12  
 Sq/Ft: 3,095,000.00  
 Average Grade: D

Roofing  
 Paving  
 Mechanical  
 Windows and Walls

Name ▲▼  
 Bala Cynwyd Post Office

Deficiencies

Main Lot

**SIEMENS**  
 Site Name: Signal Hill Water Technologies Plant  
 Corporate Contact: Julie Mattingly  
 Corporate Sourcing  
 Site Contact: Brian Schulz  
 Signal Hill Water Technologies Plant  
 1700 E. 28th Street  
 Signal Hill, CA 90755  
 Site Division: Water Technologies

**SERVICE DISPATCH**

Sections	Documents	Notes and History	Asset Manager	Budget Matrix
Total Sections: 1				
Total Sq/Ft: 23,720.00				
Map ▲▼	Name ▲▼	Sq/Ft ▲▼	Estimated Install ▲▼	Grade ▲▼
	Parking Lot	23,720.00		D

**Scalable**  
 The FCS solution is programmed with tables that accommodate a lot more than roofing. FCS allows you to manage Roofing, Paving, HVAC, and Walls and Windows in the same platform by simply adding modules.

Prepared for: **SIEMENS**

Project: Signal Hill Water Technologies Plant  
 Contractor: RoofOptions, LLC  
 Phone: 1-414-228-1780  
 Project Status: In Progress

Section: Precast Repairs  
 File Number:  
 Contact: Dennis Riley  
 Date of Work: 01/29/2010

Percent Complete: 100%

Comments: Patch work was completed today on final area of concern.  
 (click on any of the photos for more detail)

## Flexible

At FCS we do not offer an out of the box solution. We are Enterprise Operating Systems developers. We craft the Facility Management tool to fit your specific needs.

**+** facilitycontrolsystems<sup>tm</sup>

www.fcscontrol.com

provided by FCS Certified Provider:

