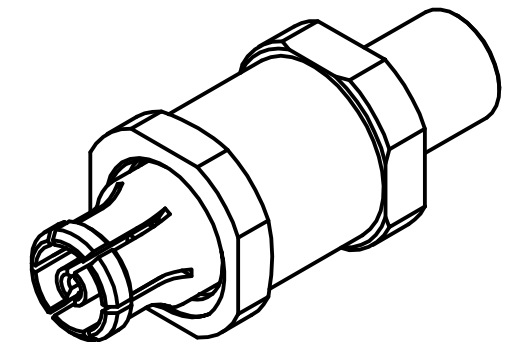
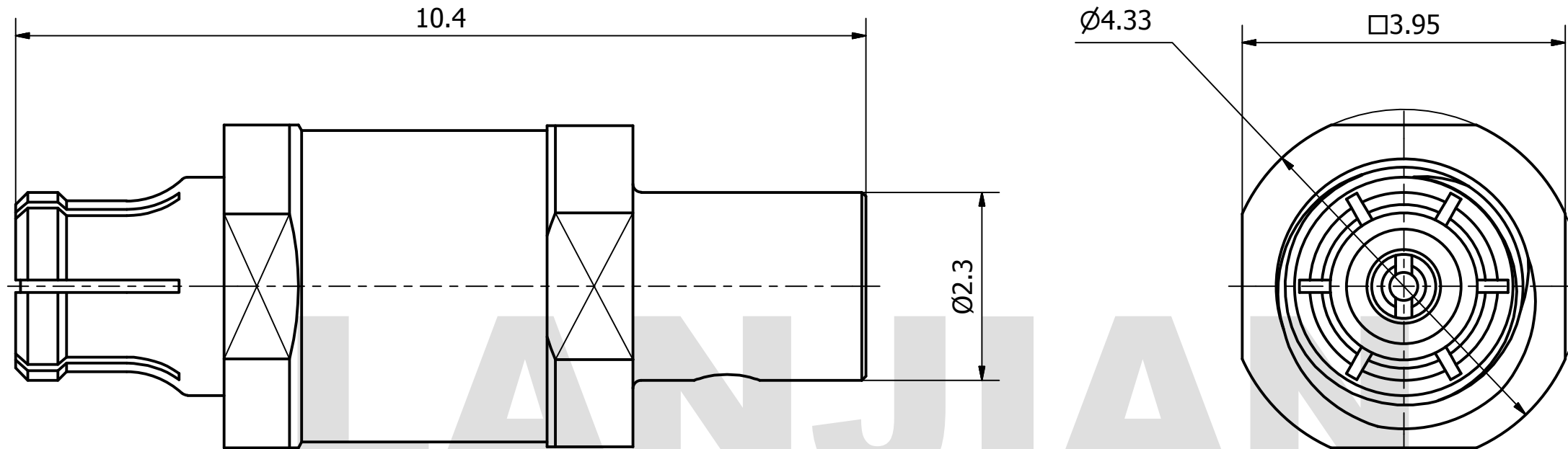


# PRODUCT DATA SHEET



**MATERIAL:**  
 BODY: BERYLLIUM COPPER PER ASTM B196.  
 ALLOY NO. UNS C17300  
 CONTACT: BERYLLIUM COPPER PER ASTM B196.  
 ALLOY NO. UNS C17300  
 INSULATOR: PTFE PER ASTM D1710

**PERFORMANCE:**  
 IMPEDANCE: 50 OHMS  
 FREQUENCY: DC TO 40 GHz  
 VSWR: ≤1.35

THIS DOCUMENT CONTAINS CONFIDENTIAL AND PROPRIETARY INFORMATION THAT CANNOT BE REPRODUCED OR DIVULGED, IN WHOLE OR IN PART, WITHOUT WRITTEN AUTHORIZATION FROM "LANJIAN ELECTRONICS"	MATERIAL :			<p style="font-size: 8px;">38 Hengtong Road, Xinqu Dingmao Zhenjiang, 212009, Jiangsu, P. R. China</p>
	UNLESS OTHERWISE SPECIFIED: DIMENSIONS IN MM			
	TOLERANCES :			
	X.X ±0.20	ANGULAR : ±1°	DEBURR AND BREAK SHARP EDGES	
	X.XX ±0.10	FILLETS R/C : ±0.10		
	X.XXX ±0.01	SURFACE FINISH : Ra 1.6		
DRAWN	NAME	DATE	SIGNATURE	
CHK'D	YaoJiang	10/29/2018		
APPV'D	HongZhongYan	10/29/2018		
MFG				
PROJECTION		SIZE	SCALE	
		A3	15 : 1	
DO NOT SCALE THE DRAWING			REV. A	
DWG No. GCPZ3.660.H.014			PAGE 1 / 1	

SMPM-KY047  
straight jack cable connector