

# Maple Leaf WHEELCHAIR



*The only limitation is your imagination*

The **ML**ine  
of seating products  
CUSHIONS



**ML**Cozy



**ML**Extreme Comfort



**ML**Bariatric



**ML**Cushionair



[www.mapleleafwheelchair.com](http://www.mapleleafwheelchair.com)

## The **ML**ine of seating products CUSHIONS

### MLCozy

The ML Cozy is designed to provide superior pressure distribution relief. It's 2 layer design is comprised of a visco elastic foam upper layer and a high resilience polyurethane foam lower layer.

**WEIGHT CAPACITY - 250 LBS**

**STANDARD SIZES**

- ♦ 16" x 16" ♦ 18" x 16"
- ♦ 16" x 18" ♦ 18" x 18"

**CUSTOM SIZES**

- ♦ 20" x 16" ♦ 16" x 20"
- ♦ 20" x 18" ♦ 18" x 20"
- ♦ 20" x 20"



### MLBariatric

The ML Bariatric is designed to provide the maximum pressure distribution relief in a solid cushion. It's 3 layer design is comprised of an extra-firm ultra cell polyurethane foam base layer, a high density memory foam center layer and a visco elastic foam upper layer.

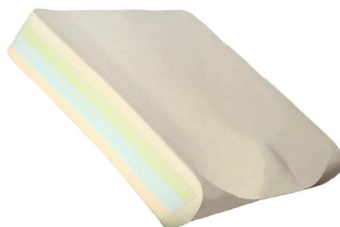
**WEIGHT CAPACITY - 450 LBS**

**STANDARD SIZES**

- ♦ 16" x 16" ♦ 18" x 16"
- ♦ 16" x 18" ♦ 18" x 18"

**CUSTOM SIZES**

- ♦ 20" x 16" ♦ 16" x 20"
- ♦ 20" x 18" ♦ 18" x 20"
- ♦ 20" x 20"



### STANDARD FEATURES

- ♦ Superior pressure reduction
- ♦ Excellent contouring for positioning
- ♦ Waterfall front for thigh support and comfort
- ♦ Abductor for comfort and proper thigh positioning
- ♦ Incontinent inner cover
- ♦ Easy clean, incontinent, 4-way stretch outer cover

### MLExtreme Comfort

The ML Extreme Comfort is designed to provide advanced pressure distribution relief. It's 3 layer design is comprised of a ultra cell polyurethane foam base layer, a medium density memory foam center layer and a visco elastic foam upper layer.

**WEIGHT CAPACITY - 250 LBS**

**STANDARD SIZES**

- ♦ 16" x 16" ♦ 18" x 16"
- ♦ 16" x 18" ♦ 18" x 18"

**CUSTOM SIZES**

- ♦ 20" x 16" ♦ 16" x 20"
- ♦ 20" x 18" ♦ 18" x 20"
- ♦ 20" x 20"



### MLCushionair

The ML Cushionair is designed to provide the most pressure distribution relief. It's unique rubber air cell design maximizes comfort and is equipped with single or dual valves for inflation when needed.

**WEIGHT CAPACITY - 250 LBS**

**STANDARD SIZES**

- ♦ 16" x 16" ♦ 18" x 16"
- ♦ 16" x 18" ♦ 18" x 18"

**CUSTOM SIZES**

- ♦ 20" x 16" ♦ 16" x 20"
- ♦ 20" x 18" ♦ 18" x 20"
- ♦ 20" x 20"



### MODEL SPECIFICATIONS

- ♦ Weight of cushions - 3.5 - 4.0 lbs
- ♦ 1 year warranty on foam
- ♦ 90 day warranty on cover

### Dealer Information

6540 Tomken Road  
Mississauga ON L5T 2E9  
T 905.564.2250 F 905.564.5424  
1.800.362.0873

[www.mapleleafwheelchair.com](http://www.mapleleafwheelchair.com)

