

AGCO CORN HEAD PARTS



PART #	MODEL	DESCRIPTION	PRICE EA.
DA 400	1977-89 BLACK HEAD	GATHERING CHAIN	\$ 56.00
DA 500	HUGGER / 3000 SER.	GATHERING CHAIN	\$ 56.00
A71359125	HUGGER / 3000 SER.	LOWER IDLER 8T	\$ 16.95
A70595084	1977-89 BLACK HEAD	LOWER IDLER 8T	\$ 15.95
AP71432138	HUGGER / 3000 SER.	UPPER DRIVE SPROCKET	\$ 18.95
AP70577247	1977-89 BLACK HEAD	UPPER DRIVE SPROCKET	\$ 19.95
KAC100	AC 1972-89 BLACK HEAD	ROLL FLUTE (4 USED PER ROLL) 2H	\$ 20.50
KHC110	HUGGER / 3000 SER.	ROLL FLUTE (3 USED PER ROLL) 3H	\$ 22.00



DRAGO GATHERING CHAINS



PART #	MODEL	DESCRIPTION	PRICE EA.
ADG100	LEGACY, SERIES I & II, DG9060, DG9340, DG11030, GT SERIES	56 LINKS / 7 LUGS / CHROME PINS	\$ 76.95 EA. SALE

***FITS ALL ROW WIDTHS EXCEPT 20" SPACING!**

GERINGHOFF CORN HEAD PARTS



PART #	MODELS	DESCRIPTION	PRICE EA.
AGH100	ROTO DISC 30" / NORTH STAR 30" / MS CORNSTAR 30"	CHAIN 76 LINK 6 LUG	\$ 72.95
AGH200	ROTO DISC 30" / NORTH STAR 30" / MS CORNSTAR 30"	CHAIN 76 LINK 9 LUG	\$ 72.95
AGH400	ROTO DISC 20" / NORTH STAR 20" / MS CORNSTAR 20"	CHAIN 72 LINK 9 LUG	\$ 72.95
C50127	ALL	POLY WEAR BLOCK (2 PER ROW)	\$ 2.95
A032012GH	ALL 30" HEADS	17 TOOTHLOWER IDLER SPROCKET	\$ 39.90
K501060	ROTA DISC HEADS	CUTTING DISC (15 PER SHAFT)	\$ 33.50
K502351	NORTH STAR	ROLL KNIFE (HEAT TREATED TUNGSTEN)	\$ 37.95
K502300	NORTHSTAR	ROLL KNIFE BOLT KIT (6 PER ROLL)	\$ 2.00
K501251	ROTA DISC HEADS	ROTOR KNIFE W/ TUNGSTEN EDGE	\$ 18.95
K501839	ROTA DISC HEADS	STUBBLE CUTTER	\$ 39.95

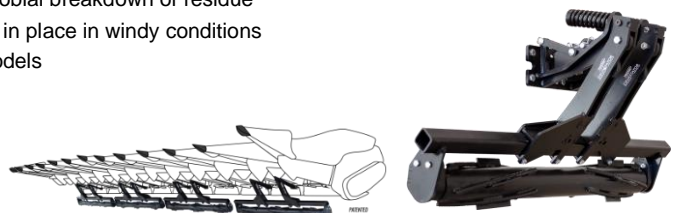


YETTER STALK DEVISTATOR

Today's hybrids develop tough stalks that can destroy expensive tires and tracks on equipment. The 5000 Stalk Devastator™ saves tires and tracks by knocking over, stomping, and crushing stalks while leaving them attached, speeding up the cornstalk breakdown process and improving field conditions for spring planting.

Features

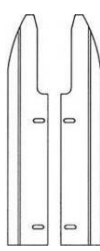
- Prevents damage to tires, tracks, wires, and hydraulic hoses on combines, trucks, tractors, and implements
- Knocks over and crushes stalks for faster decomposition and microbial breakdown of residue
- Preserves residue cover, reducing soil erosion and keeping stalks in place in windy conditions
- Quick and easy to install with mounting kits for most corn head models
- Features spring-loaded, adjustable down pressure
- Solid steel construction ensures reliability and durability
- Will not interfere with most head cart trailers
- Rollers can be locked up for transport of head or when not in use.



PART #	MODEL / ROW # / LIST PRICE	PRICE EA.
5000-025	JD 643/693/606C / 6 ROW 30" (\$4200 LIST)	CALL FOR DISCOUNT PRICING
5000-026	JD 893, 608C / 8 ROW 30" (\$5600 LIST)	CALL FOR DISCOUNT PRICING
5000-027	JD 612C / 12 ROW 30" (\$8395 LIST)	CALL FOR DISCOUNT PRICING
5000-006	CIH 3208,3408 / 8 ROW 30" (\$5600 LIST)	CALL FOR DISCOUNT PRICING
5000-017	DRAGO 830/ 8 ROW 30" / (\$5600 LIST)	CALL FOR DISCOUNT PRICING

CASE IH CORN HEAD PARTS

800 SERIES



PART #	DESCRIPTION	PRICE EA.
251-E	GATHERING CHAIN IMP. (IMP CHROME PIN)	\$ 36.95
251-A	GATHERING CHAIN USA	\$ 46.95 SALE
87034967	LOWER IDLER SPROCKET (USA)	\$ 27.50
APS62-0721	UPPER DRIVE SPROCKET	\$ 19.95
A-176291C91	DECK PLATE LH	\$ 26.95
A-176292C91	DECK PLATE RH	\$ 26.95
A-176304C2	ROLL KNIFE (4 PER SHAFT REQUIRED)	\$ 17.95



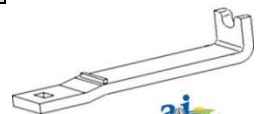
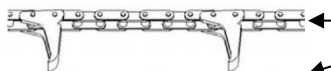
900-1000 SERIES

PART #	DESCRIPTION	PRICE EA.
P176301	ROLL SHAFT COUPLER	\$ 19.50
199371C5	RH ALUMINUM SUPPORT	\$ 155.00
199372C5	LH ALUMINUM SUPPORT	\$ 155.00
176286C2	IDLER SUPPORT LH	\$ 48.50
176287C2	IDLER SUPPORT RH	\$ 48.50
1306207C1	WEED KNIFE (WELD ON)	\$ 4.25
WN-352552A1	LH STALK ROLL AUGER W/ BEARING	\$ 87.95
WN-352551A1	RH STALK ROLL AUGER W/ BEARING	\$ 87.95
327913A2	BEARING SHIELD	\$ 5.95
1989222C2	STALK ROLL BEARING	\$ 24.50
WN-199293C5	STALK ROLL SHAFT	\$ 88.95
WN-1327205C1	RH ROLL SHAFT SUPPORT	\$ 53.95
WN-1327204C1	LH ROLL SHAFT SUPPORT	\$ 53.95
1306150C1	IDLER TENSION SPRING	\$ 5.95
199097C3	EAR SAVER (RUBBER)	\$ 4.50
AJDIH100	GATHERING CHAIN IMP.	\$ 36.95
251-A	GATHERING CHAIN USA	\$ 46.95 SALE
87034967	LOWER IDLER SPROCKET (USA)	\$ 27.50
A-199497C1	UPPER DRIVE SPROCKET	\$ 19.95
WN-1347176C1	CHAIN GUIDE	\$ 19.95
WN-199382C1	RH DECK PLATE	\$ 19.95
WN-199381C1	LH DECK PLATE	\$ 19.95
WN-1327126C1-T	STALK ROLL KNIFE TUNGSTON (4 NEEDED PER SHAFT)	\$ 17.95
IH1000SRKVH	1000 SER. ROW UNIT KIT	\$ 549.00 SALE
4-3090A	4 ROW 30" POLY TIN COMPLETE KIT	\$ 2475 SALE W/SHIPPING
6-3090A	6 ROW 30" POLY TIN COMPLETE KIT	\$ 3500 SALE W/SHIPPING
8-3090A	8 ROW 30" POLY TIN COMPLETE KIT	\$ 4400 SALE W/SHIPPING
PLF-90A	FENDER ASSEMBLY	\$ 355 SALE
PLS-90A	FENDER SNOUT POLY	\$ 200 SALE
PS30-90A	CENTER SNOUT POLY	\$ 200 SALE



2200-3400 SERIES

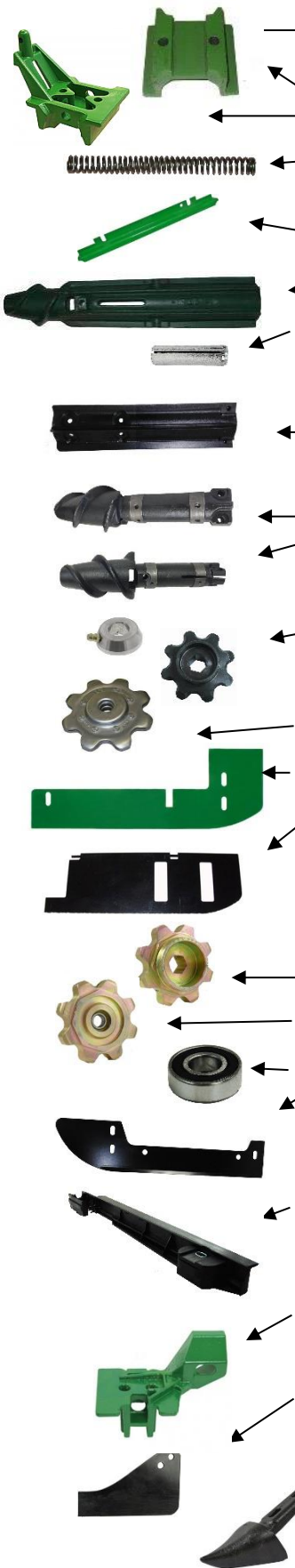
PART #	DESCRIPTION	PRICE EA.
K2200	2000 SER. ROLL KNIFE PLATE (2 PER ROLL)	\$ 39.95
WN-87598741	3000 SER. ROLL KNIFE (4 PER ROLL)	\$ 20.95
87034967	LOWER IDLER SPROCKET (USA)	\$ 27.50
AP86837081	2200, 2400, 3200 SN <YCS023090, 3400 SN<YCS039041 DRIVE	\$ 21.95
251-A	EARLY 2200-3400 GATHERING CHAIN USA	\$ 46.95 SALE
WN-86979313	2200, 2400, 3200, 3400 (< 2010)	\$ 41.95
AIH400	6 LUG GATHERING CHAIN 3200, 3400 (2011>)	\$ 60.00
CF86369	LOWER IDLER SUPPORT 2200-3400	\$ 39.95
87029139	LOWER IDLER STRAP 2200-3400	\$ 31.95
86526475	EAR SAVER (RUBBER)	\$ 7.95



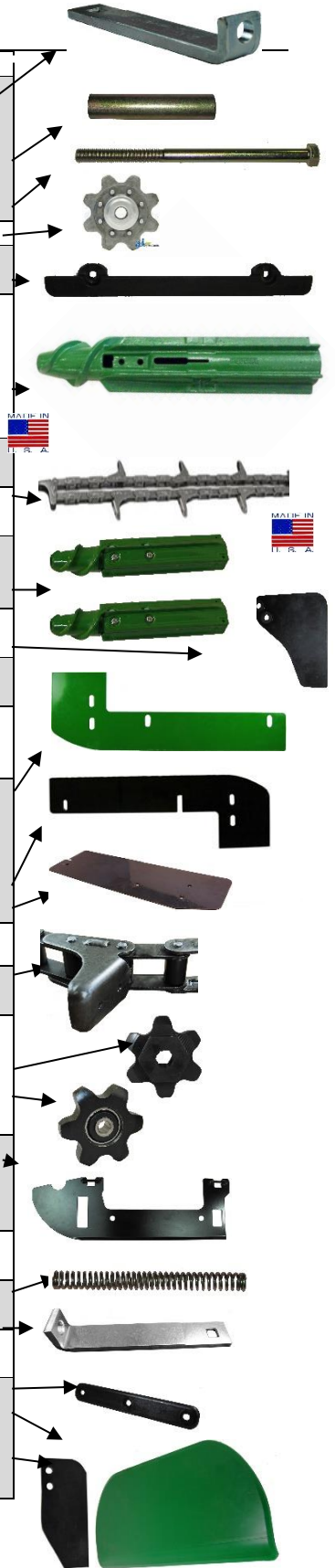
PRICES SUBJECT TO CHANGE WITHOUT NOTICE!

JOHN DEERE CORN HEAD PARTS

40-90 SERIES

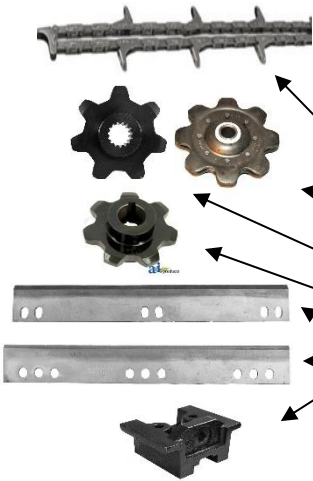


PART #	DESCRIPTION	PRICE EA.
P144503	LATE 40 / 90 IDLER STRAP	\$ 19.95
WN-H84479	40 SER. IDLER SUPPORT	\$ 19.95
CH153898	90 SER. IDLER SUPPORT	\$ 22.95
N104096	ADJUSTMENT SLEEVE	\$ 7.95
CN61703	IDLER TENSION SPRING	\$ 4.95
O8H4219	IDLER TENSION BOLT	\$ 5.95
AN102448	LOWER IDLER (NON G) USA	\$ 18.95
H118945	STEEL CHAIN GUIDE	\$ 19.50
CH151211	CAST CHAIN GUIDE	\$ 22.50
A104090	RH TAPERED FLUTE STALK ROLL	\$ 79.50 SALE
A104091	LH TAPERED FLUTE STALK ROLL	\$ 79.50 SALE
TFHWKIT	5/16 X 2 & 1/2 X 2 ROLL PIN SET (1 PER ROLL)	\$ 1.05
A150138 USA	RH STRAIGHT FLUTE STALK ROLL	\$ 109.00 SALE
A150139 USA	LH STRAIGHT FLUTE STALK ROLL	\$ 109.00 SALE
TFHWKIT	5/16 X 2 & 1/2 X 2 ROLL PIN SET (2 PER ROLL)	\$ 1.05
CF150690	RH KNIFE ROLL SEGMENT (2 PER ROW)	\$ 100.00 SALE
CF150691	LH KNIFE ROLL SEGMENT (2 PER ROW)	\$ 100.00 SALE
251-A	GATHERING CHAIN (USA)	\$ 46.95 SALE
AJD1H100	GATHERING CHAIN IMP (CHROME PIN)	\$ 36.95
P148320R	RH KNIFE ROLL SHAFT	\$ 115.00
P148321L	LH KNIFE ROLL SHAFT	\$ 115.00
KRK90C	COMPLETE KNIFE ROLL KIT	\$ 695 PER ROW SALE
H148223	90 SER. INNER EAR SAVER (SN<676000)	\$ 4.25
H166582	40 SER. / 90 SER. EAR SAVER (SN 676001>)	\$ 4.25
AP85252	UPPER DRIVE SPROCKET	\$ 19.95
H85252	ECONOMY UPPER DRIVE SPROCKET	\$ 14.95
AH204016	LATE IDLER GREASE CAP	\$ 7.95 SALE
AH 101219	LATE 40/ 90 GREASABLE IDLER SPROCKET	\$ 20.50
P101219-E	LATE 40/ 90 GREASABLE IDLER SPROCKET	\$ 10.95
N 102068 JD	40 SER. RH DECK PLATE (SN <466450)	\$ 23.95
N 102069 JD	40 SER. LH DECK PLATE (SN <466450)	\$ 23.95
H94952	LATE 40 SER. DECK PLATE (SN 466451>)	\$ 20.95
AH147773	90 SER. HYD DECK PLATE HF	\$ 76.95 SALE
H154270	90 SER. STATIONARY HF (NON-HYD)	\$ 32.95 SALE
AH140825	COVER FOR HYD DECK PLATE	\$ 55.95 SALE
JD 600 SERIES		
AH208978	606-618C (SN 745101>) GATHERING CHAIN (6 TOOTH)	\$ 69.95
AJD601	606-618C (SN <745100) GATHERING CHAIN (8 TOOTH)	\$ 69.95
AP233287	606-618C (SN <745100) UPPER DRIVE SPROCKET	\$ 34.95
AP231386	606-618C (SN <745100) LOWER IDLER SPROCKET	\$ 36.95
AP10258	606-618C (SN 745101>) UPPER DRIVE SPROCKET	\$ 36.95
AH18770	606-618C (SN 745101>)) LOWER IDLER SPROCKET	\$ 26.95
B6203RL	BEARING ONLY FOR AP231386	\$ 5.50
CH24566	606-618C (SN <745100) RH BEVELED DECK PLATE	\$ 44.50
CH17618	606-618C (SN <745100) LH BEVELED ADJ. DECK PLATE	\$ 65.50
CH237437	606-618C, 708-718C (SN 745101>) RH DECK PLATE	\$ 57.50
CH234656	606-618C, 708-718C (SN 745101>) LH ADJ. DECK PLATE	\$ 76.50
AH235031	LH POLY CHAIN GUIDE 606-618C,(SN 745101>)	\$ 29.75
AH235033	RH POLY CHAIN GUIDE 606-618C,(SN 745101>)	\$ 29.75
CN61703	IDLER TENSION SPRING	\$ 6.25
H215634	606-618C (SN <745100) IDLER SUPPORT	\$ 29.95
H237885	LH CAST IDLER SUPPORT (SN 745101>)	\$ 32.00
H237841	RH CAST IDLER SUPPORT (SN 745101>)	\$ 32.00
G228917	606-618C SNOOT WEAR STRIP (4 PER SNOOT)	\$ 3.95
CFJDP	POLY DIVIDER PATCH KIT	\$ 24.95
CF326324	600C / 700C EAR SAVER INNER (5/16" THICK)	\$ 12.50
CF326325	600C / 700C EAR SAVER OUTER (5/16" THICK)	\$ 12.50
H148121	CAST SNOOT TIP	\$ 21.95



PRICES SUBJECT TO CHANGE WITHOUT NOTICE !

NEW HOLLAND CORN HEAD PARTS



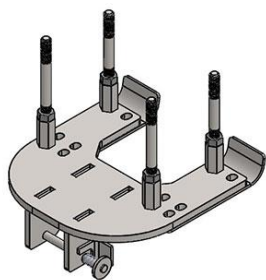
PART #	MODEL	DESCRIPTION	PRICE EA.
AJD1H100	974, 996, 96C, 98C, 98D (<2010)	GATHERING CHAIN (CHROME PIN)	\$ 36.95
AIH500	99C, 980CF, 980CR	GATHERING CHAIN (CHROME PIN)	\$ 68.95
87034967	974, 996, 96C, 98C,	LOWER IDLER NON GREASABLE (USA)	\$ 27.50
A84635	98D	LOWER IDLER NON GREASABLE	\$ 18.95
AP86837081	98D (<2013)	SPLINED DRIVE SPROCKET (7 TOOTH)	\$ 21.95
84347361	98D (2013>)	ROUND BORE DRIVE SPROCKET (7 TOOTH)	\$ 34.50
K322591950	99C, 980CF, 980CR	ROLL KNIFE (4 PER SHAFT)	\$ 43.95
K87598741	98D	ROLL KNIFE (4 PER SHAFT)	\$ 35.95
CF86369	974 (SN <536454), 96C, 98C, 98D, 996	LOWER IDLER SUPPORT	\$ 41.95

STALK STOMPERS FOR CORN HEADS

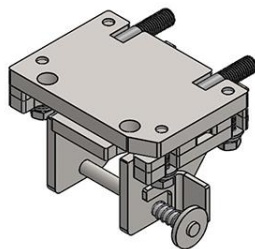


PART #	MODEL TO FIT:	DESCRIPTION	PRICE PER ROW
NDYSA-//	CNH, JD, GERINGHOFF	SINGLE ASSEMBLY COMPLETE	\$ 319.00 SALE
NDYSA-DR	DRAGO	6 ROWS OR MORE W/ MOUNTS	\$ 319.- \$400 SALE
NDYSA-DR1	DRAGO SER. 1 & 2	SINGLE ASSEMBLY COMPLETE	\$ 319.00 SALE
99203	ALL	TORSION SPRING	\$ 16.00 SALE
99216	ALL	SPRING LOADED PULL PIN	\$ 7.00 SALE

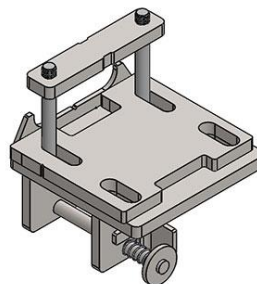
***FREIGHT CHARGES MAY BE APPLIED TO NON-STOCKED STOMPER KITS!**



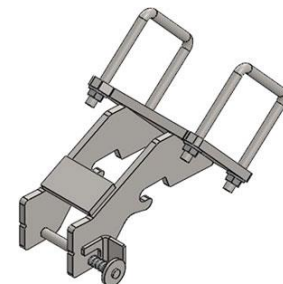
GERINGHOFF



JD 40/90 SERIES



JD 600 SERIES



CNH 4000 SERIES

- One pin quick release
- Standard three position mount
- Case hardened inner and outer bushings
- Mounts using existing gearbox bolts
- Optional storage mounts
- Black or yellow poly option
- 14" twin row shoes available

