

Larry DRENON AUCTION

40759 Hwy VV, Edwards, MO

To settle the Estate of Betty Flowers, the following will sell located from Warsaw, MO south on Hwy 65 approx. 13 miles to AA Blacktop (or from Cross Timbers north on Hwy 65 approx. 5 ½ miles to AA) then 4 miles to VV, and 8/10ths on VV to sale on

SATURDAY, APRIL 30TH, 10am



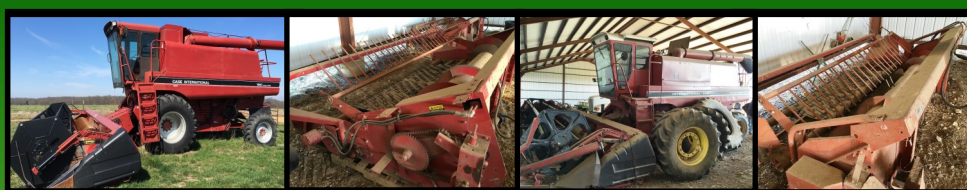
TRACTORS

2015 John Deere 7210R 20 speed command quad, premium cab, 4 hydraulics, triple link suspension, 4wd, 825 hr
2013 John Deere 6150, auto quad 20 spd transmission, deluxe cab, triple hydraulics, triple link suspension, 3 function joy stick, 1090 hrs, w/ John Deere H360 Loader, 84" bucket with grapple
2013 John Deere 6125R, 24 spd auto quad, premium cab, triple hydraulics, 1540 hrs, John Deere H340 Loader, 84" bucket
2008 John Deere 5203 tractor, 56hp, 733 hrs



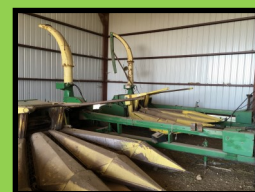
HAY AND FEED EQUIPMENT

Artsway 6530 grinder-mixer, pto hydraulics, self-contained, scales, screens, bought new in 2015
Supreme Int. 700 T tub grinder wagon 20,000 lbs w/scales, new tires
John Deere 854 baler, silage special, pre-cut knives, 4x5 net wrap, 2 yr old Dual cylinder covered silage wagon
Massey Hesston 1837 square baler, like new
Vermeer BP8000 Bale processor
Frontier TD1123 tedder
Hay Master square bale accumulator
Square bale grapple tractor attachment
Square bale grapple attachment for skid steer



COMBINES AND CROP EQUIPMENT

Case 1660 Axial Flow Combine w/1010-25 Rigid Platform head
Case Int. 1015 132BC pickup head for 1660 Combine
Int. 1440 axial-flow combine, w/#1020 20' head
Int. #843 4 row corn head for 1440 Combine
Int. 810-10 pickup head for 1440 Combine
IHC 820-15 head
2- John Deere 3960 30" 3 row choppers
30" 2 Row Silage head fits 3960
2- John Deere 750 15' no-till drills, on hitch
John Deere 7200 no till 12 row vacuum corn planter
Case IH 8210 21' Windrower
John Deere 300 3 row corn picker
2 MW Little Red Grain Wagons, 300B-5606
Westfield MK100-71' grain auger, 5' swing hopper
KSI model 161060 60' grain auger



SKID STEER

John Deere 333E track skid steer, pilot control, air ride seat, purchased new in 2015, 461 hrs
TR60B trencher attachment, new
PH11 Backhoe bucket attachment, 12" & 24" buckets, new

FIELD MAINTENANCE EQUIPMENT

LANCO Litter Spreader, 18'
Case IH RMX370 hd Disk
John Deere 960 field cultivator w/spring tooth harrow
Int. 12 shank chisel plow
John Deere CX 15 rotary cutter, air ride suspension, front and rear chain
Rhino FR15 brush cutter



STOCK TRAILER

2014 Featherlite 40' ground load, semi livestock trailer



FLATBED TRAILER

1997 Coose Gooseneck 30' flatbed with dovetail, electric over hydraulic



CAR

2011 Cadillac SRX crossover, Radiant silver, all power, leather, Transferrable Platinum Protection Extended Warranty, only 32,020 miles



UTV

2014 Polaris 800EFI Ranger 4x4



PICKUP

Subaru Sanbar deluxe 4x4 pickup



LAWN MOWER

John Deere Estate Series 60"
0-turn, Kohler Z520A engine

Auctioneer's Note: We are privileged to work for Betty's family and sell this line of quality equipment from her estate. All the equipment sells **absolute**. There are no small items, be sure to get here early to get your buyer number as we will be starting promptly at **10:00** on equipment.

MOTORCYCLES

2013 Harley Davidson Super Glide, 96 cu in, Six speed, has extended transferable warranty, very good cond. 505 miles
1997 Suzuki 800 Intruder, very good cond. 8750 miles



JEEP

1965 CJ5 Tuxedo Park IV, new paint and seats, new soft top, like new tires



FERTILIZER TRUCK

1989 GMC Floater, Cat3208, Allison auto, New Leader L2020 fertilizer/lime bed



PICKUP W/ BALE BED

1986 Ford F350 diesel, 4x4, w/Hydra Bale Bed, engine driven pump



TRACTORS

John Deere 4230 tractor, 105 hp, 4018 hrs
John Deere 2040 tractor, with JD 145 loader, & JD 1650 backhoe



WELDER

Lincoln ACDC welder



FARM EQUIPMENT

Danuser 3 pt post hole driver
New Holland 851 baler, auto wrap
John Deere 430 baler, one owner
John Deere 336 square baler



CEDAR SIDING

1x8 Beveled wavy cedar, 270 of 12' and 120 of 14' long

Terms: Cash or approved check. Buyers unknown to auctioneers must bring letter of credit from bank. Nothing removed until settled for. Not responsible for accidents. Statements made day of sale take precedence over printed material. Lunch served.



Larry
660-596-8515

Larry DRENON AUCTION

Since 1969

REAL ESTATE • FARM EQUIPMENT
ANTIQUES • HOUSEHOLD



Laramie
660-221-4386

Lincoln, MO Office: 660-547-2646 www.drenonauction.com

BETTY FLOWERS TRUST