

Weekly 10-year Bond Yields Charts

Newsletter

July 2, 2018

The Weekly Bond Yields Charts Newsletter provides Cornelius Luca's trade ideas, model signals, and absolute charts

© 2018 Luca Global Markets, LLC. All rights reserved. This content is provided as general information only and does not constitute investment advice or a representation that any investment, security or other product is suitable for any person. This content reflects the opinions only of the author and cannot be interpreted as advice.

This content is the intellectual property of Cornelius Luca. Any copying, distribution or redistribution of this content is expressly prohibited without the prior written consent of Cornelius Luca.

Cornelius Luca shall not be liable for any errors in the content, or for any actions taken in reliance thereon.

Trade Idea

- Short US bond yield *while below* the 21-day exponential moving average
- Short German bund yield *while below* the 5-day exponential moving average

10-year Treasury Yields Models

Daily & Weekly

| 10-Year Yield | Daily Model | since | Daily Bias (> or < 21-day EMA) | Daily Risk | Weekly Model | since | Weekly Bias (> or < 21-week EMA) | Weekly Risk |
|---------------|-------------|--------|--------------------------------|------------------|--------------|--------|----------------------------------|------------------|
| US | L | 28-Jun | slightly bearish | slightly bullish | S | 15-Jun | sideways | neutral |
| Germany | S | 28-Jun | bearish | bearish | S | 14-Jun | bearish | slightly bearish |
| UK | S | 2-Jul | slightly bearish | slightly bearish | S | 15-Jun | slightly bearish | slightly bearish |
| Canada | L | 29-Jun | slightly bearish | slightly bullish | L | 2-Jul | slightly bearish | slightly bullish |
| Italy | S | 27-Jun | sideways | neutral | S | 8-Jun | slightly bullish | slightly bearish |
| Spain | S | 27-Jun | slightly bearish | slightly bearish | S | 28-Jun | slightly bearish | slightly bearish |

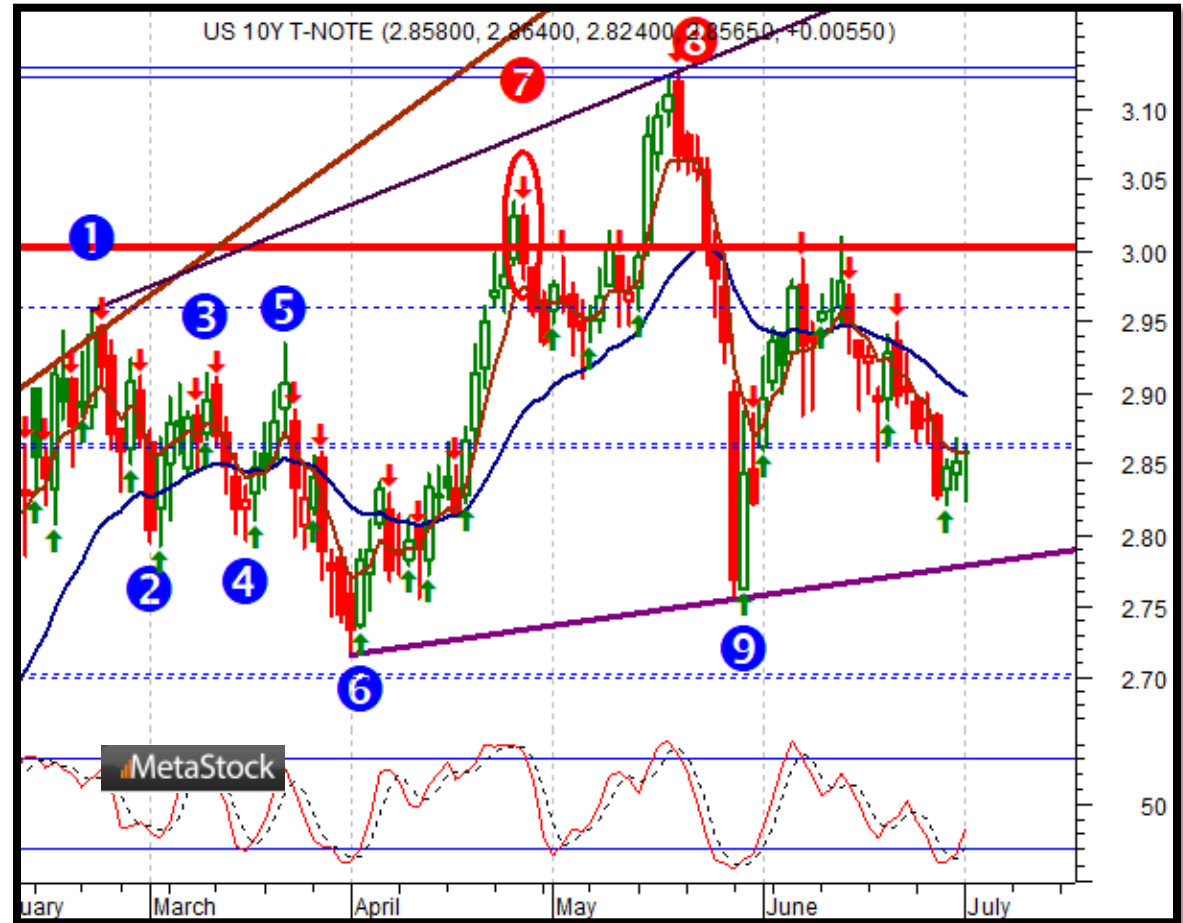
Source: Proprietary Luca Global Markets, LLC Model

US 10-year Treasury Yield

Comment:

Short US bond yield while below the 21-day EMA

- The US 10-year Treasury yield remains below both its 5- & 21-day EMAs
- The 3% area is no longer a factor
- Immediate support: 2.8220
- Further support: 2.7590 & 2.7170
- Initial resistance: 2.8985
- Further resistance: 2.9500, 3.0000, 3.0800 & 3.1280
- Fast stochastics: slightly bullish



G7 10-Year Bond Yield Trade Idea

Comment:

Short German bund yield while below the 5-day EMA

- The bund yield has fallen in 13 of the past 14 days
- It might see some reprieve IF it can manage to climb above the 5-day EMA
- So far it remains below both its 5- & 21-day EMAs
- Immediate support: .2840
- Further support: .1920
- Initial resistance: .3590
- Further resistance: .3750 & .4250
- Fast stochastics: bearish



How to Use the Heat Map

Bias: If the Candle > 21-period EMA = bullish
 If the Candle < 21-period EMA = bearish
 If the Candle around 21-period EMA = sideways

| Commodities | Since when | | Risk: Bullish or Bearish Candle as of Monday am EST | | Weekly Model | since | Weekly Bias (> or < 21-day EMA) | | Weekly Risk |
|-------------|--------------------|-------|--------------------------------------------------------|------------------|------------------|-------|---------------------------------|------------------|------------------|
| | Daily Model | since | Daily Bias (> or < 21-day EMA) | Daily Risk | | | Weekly Bias (> or < 21-day EMA) | Weekly Risk | |
| Energy | Crude (CLc1) | S | 27-Apr | bullish | slightly bullish | L | 23-Mar | slightly bearish | slightly bullish |
| | Brent (LCOc1) | L | 21-Apr | slightly bullish | slightly bullish | L | 6-Apr | slightly bearish | slightly bullish |
| | Natural gas (NGc1) | S | 23-Apr | bearish | bearish | S | 20-Apr | bearish | slightly bearish |
| | Palm oil (FCPOc1) | L | 24-Apr | sideways | neutral | S | 20-Apr | slightly bearish | slightly bearish |
| Metals | Gold (GCc1) | S | 24-Apr | bearish | bearish | S | 20-Mar | slightly bearish | slightly bearish |
| | Silver (SIc1) | S | 22-Apr | bearish | bearish | S | 24-Apr | bearish | bearish |
| | Platinum (PLc1) | S | 20-Apr | bearish | bearish | S | 20-Mar | bearish | slightly bullish |
| | Copper (HGc1) | L | 24-Apr | slightly bearish | slightly bullish | S | 24-Apr | slightly bearish | slightly bearish |
| Softs | Coffee (KCN5) | L | 24-Apr | sideways | neutral | L | 24-Apr | slightly bullish | slightly bullish |
| | Cocoa (LCCN5) | L | 23-Apr | bullish | bullish | L | 13-Apr | bullish | bullish |
| | Soy meal (SMN5) | S | 24-Apr | bearish | slightly bearish | S | 24-Apr | bearish | slightly bearish |
| | Wheat (WN5) | S | 24-Apr | bearish | slightly bearish | S | 24-Apr | bearish | bearish |
| | Corn (CN5) | S | 20-Apr | bearish | bearish | S | 6-Apr | bearish | bearish |

Source: Proprietary Luca Global Markets, LLC Model

L = long
S = short