

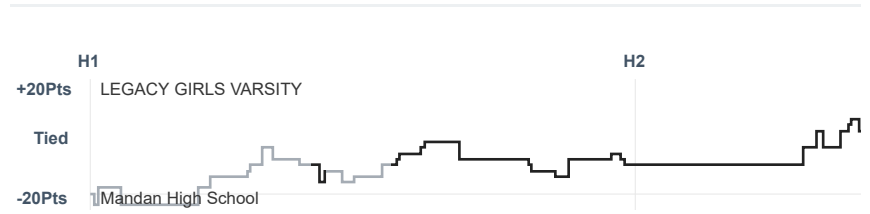
Box Score Report

LHS vs Mandan - Jan 7, 2022 - W 68-56

Period Stats

Team	1	2	Final
LHS	26	42	68
MHS	21	35	56

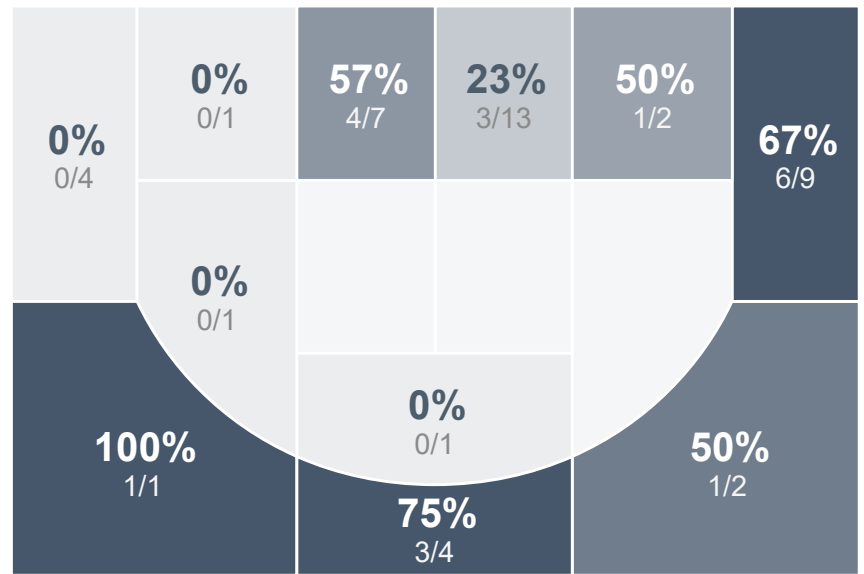
Run Graph



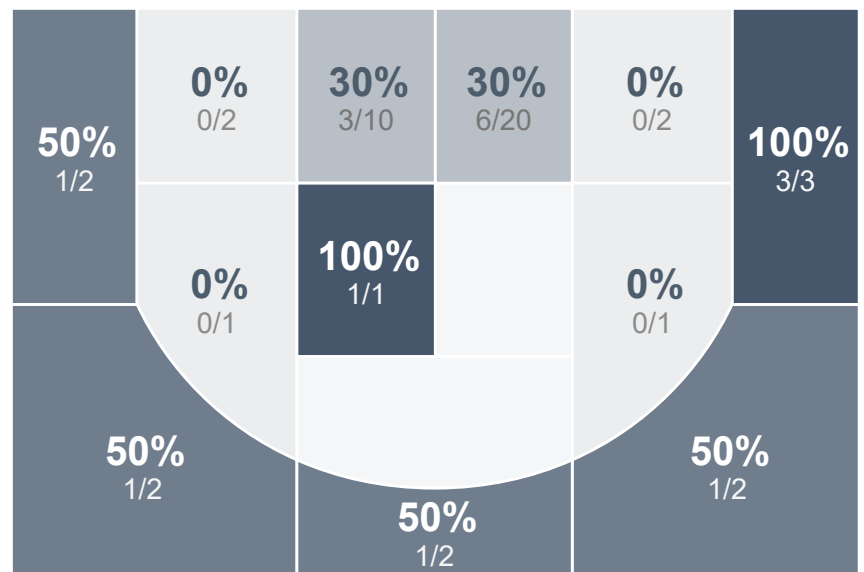
Team Stats

	LHS	MHS
Field Goal %	42.2%	35.4%
Effective Field Goal %	54.4%	42.7%
2FG Made/Attempted	8/25	10/37
2FG%	32.0%	27.0%
3FG Made/Attempted	11/20	7/11
3FG%	55.0%	63.6%
FT Made/Attempted	19/34	15/21
Free Throw Percentage	55.9%	71.4%
Points Per Possession	0.93	0.74
Transition Points	7	9
Points Off Turnovers	28	20
Second Chance Points	4	6
Points in the Paint	14	20
Offensive Rebounds	9	9
Defense Rebounds	25	25
Assists	15	12
Deflections	16	3
Steals	13	9
Blocks	4	5
Turnovers	21	27
Personal Fouls	22	23
Charges Taken	0	1

LEGACY GIRLS VARSITY



Mandan High School



LEGACY GIRLS VARSITY's Player Stats

Name	Pts	FG	3FG	FT	+/-	MINS	OREB	DREB	AST	DEFL	STL	BLK	TO	FOUL	CHG
#11 Hailyn Weigel	14	5/10	4/7	0/1	+ 4	21	0	1	2	1	1	0	3	2	0
#12 Halle Severson	0	0/2	0/0	0/0	+ 2	9	0	0	1	1	3	0	2	0	0
#13 Adison Sagaser	5	2/4	1/3	0/1	+ 5	26	0	1	2	2	2	1	2	2	0
#14 Breena Sand	12	3/6	1/2	5/8	+ 4	35	1	2	1	5	4	0	2	4	0
#20 Brooklyn Brendel	0	0/1	0/0	0/0	+ 11	9	0	1	0	1	0	0	1	0	0
#22 Alyssa Eckroth	17	3/8	1/1	10/12	+ 6	28	0	3	4	1	0	0	4	4	0
#23 Mia Berryhill	7	2/6	2/5	1/4	+ 8	18	0	2	1	1	1	2	2	3	0
#34 Alece Blazek	7	2/4	1/1	2/4	- 2	26	4	5	3	0	2	0	2	3	0
#44 Aliya Selensky	3	1/2	1/1	0/0	+ 9	9	0	3	0	2	0	0	1	1	0
#45 Brooklynn Felchle	3	1/2	0/0	1/4	+ 13	13	1	2	1	2	0	1	2	2	0

Mandan High School's Player Stats

Name	Pts	FG	3FG	FT	+/-	MINS	OREB	DREB	AST	DEFL	STL	BLK	TO	FOUL	CHG
#5 Mya Sheldon	2	1/3	0/0	0/0	+ 7	21	0	0	0	0	1	0	3	4	1
#15 Harper Harris	0	0/1	0/0	0/0	+ 4	5	0	0	0	0	0	0	1	3	0
#20 Hailey Markel	9	1/5	1/1	6/6	- 18	23	0	2	1	1	0	0	1	3	0
#22 Kennedy Ritz	3	1/1	1/1	0/0	- 10	11	0	1	0	1	0	0	3	1	0
#25 Piper Harris	14	5/9	1/2	3/5	- 19	29	3	3	2	0	5	0	5	3	0
#30 Morgan Sheldon	8	2/5	2/2	2/2	+ 2	34	0	4	5	0	0	0	3	1	0
#32 Jordan Toman	8	3/11	1/3	1/2	- 10	29	1	3	2	0	1	1	4	5	0
#34 Faith Eberle	5	2/6	1/2	0/0	- 1	14	0	1	2	0	2	0	2	0	0
#35 McKenna Johnson	7	2/7	0/0	3/6	- 15	32	1	8	0	1	0	4	4	3	0