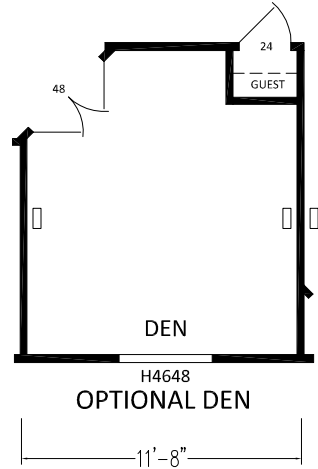
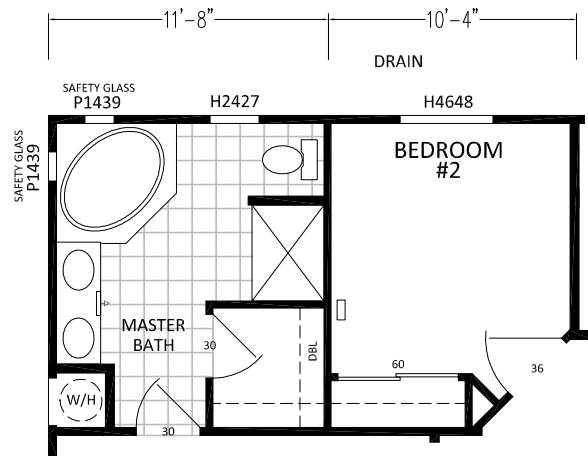
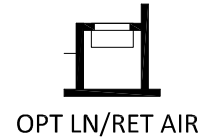


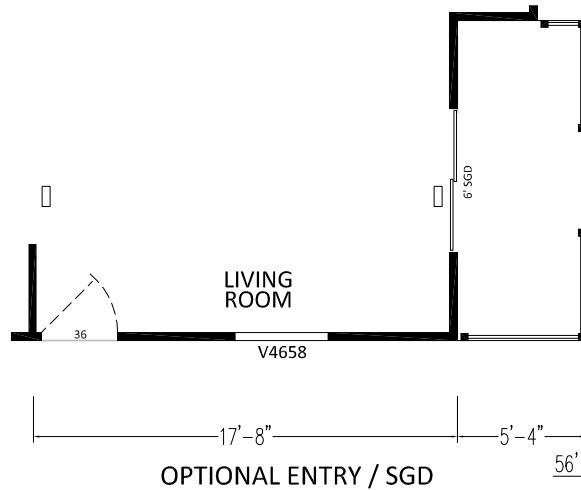
OPTIONAL CORNER SHOWER BATH



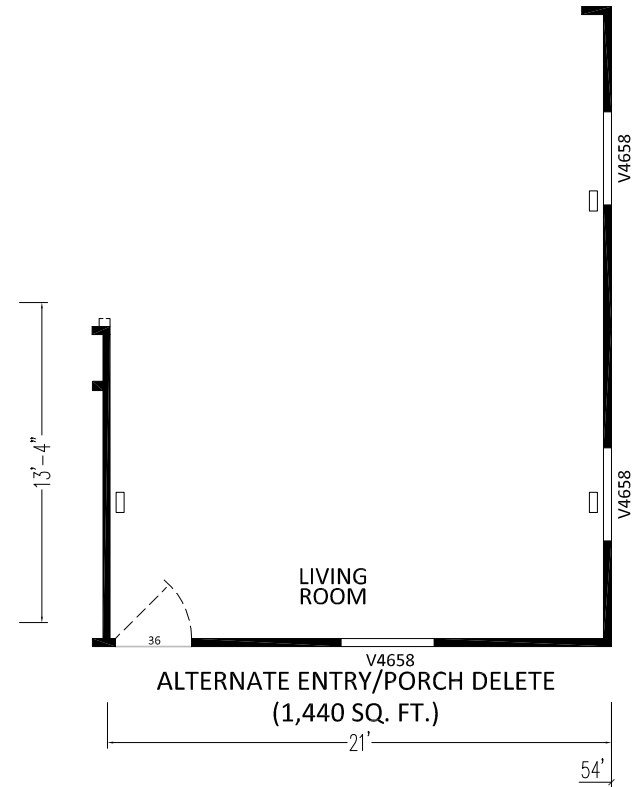
OPTIONAL DEN



OPTIONAL CORNER TUB BATH



OPTIONAL ENTRY / SGD



ALTERNATE ENTRY/PORCH DELETE  
(1,440 SQ. FT.)

SCALE: 1/8" = 1'-0"

CUSTOMER: ----



DIVISION 31, P.O. BOX 670  
SAN JACINTO, CA 92581  
(951) 654-9321

REVISIONS

REVISION DATE:  
REVISION BY:

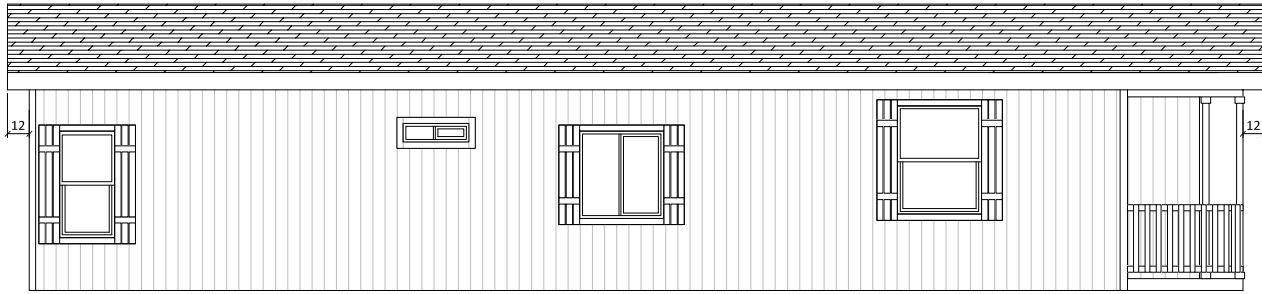
DRAW DATE: 6-30-17  
DRAWN BY: DCS

DRAWING TITLE:  
*SALES FLOOR PLAN OPTIONS*  
*5628-3BD-2BA*

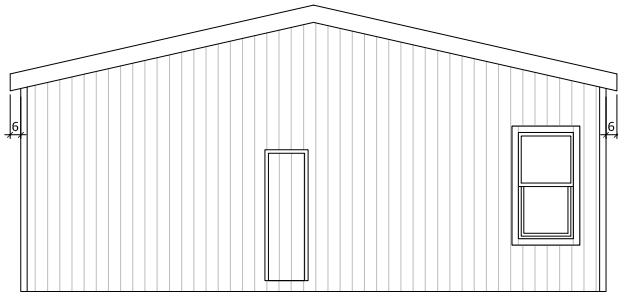
MODEL NO.  
K517G

MODEL REV. H  
DAPIA REV. 7

SHEET NO. AL-102  
REF NO. ---



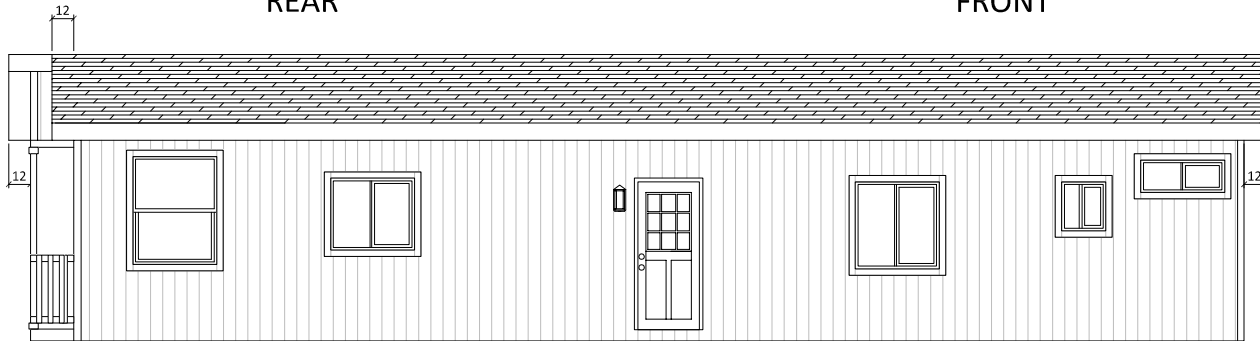
LEFT



REAR



FRONT



RIGHT

CUSTOMER: ----



DIVISION 31, P.O. BOX 670  
SAN JACINTO, CA 92581  
(951) 654-9321

REVISIONS

REVISION DATE:

DRAW DATE: 6-30-17

DRAWING TITLE:

MODEL NO.

MODEL REV. H

SHEET NO. AE-101

REVISION BY:

DRAWN BY: DCS

EXTERIOR ELEVATIONS  
5628-3BD-2BA

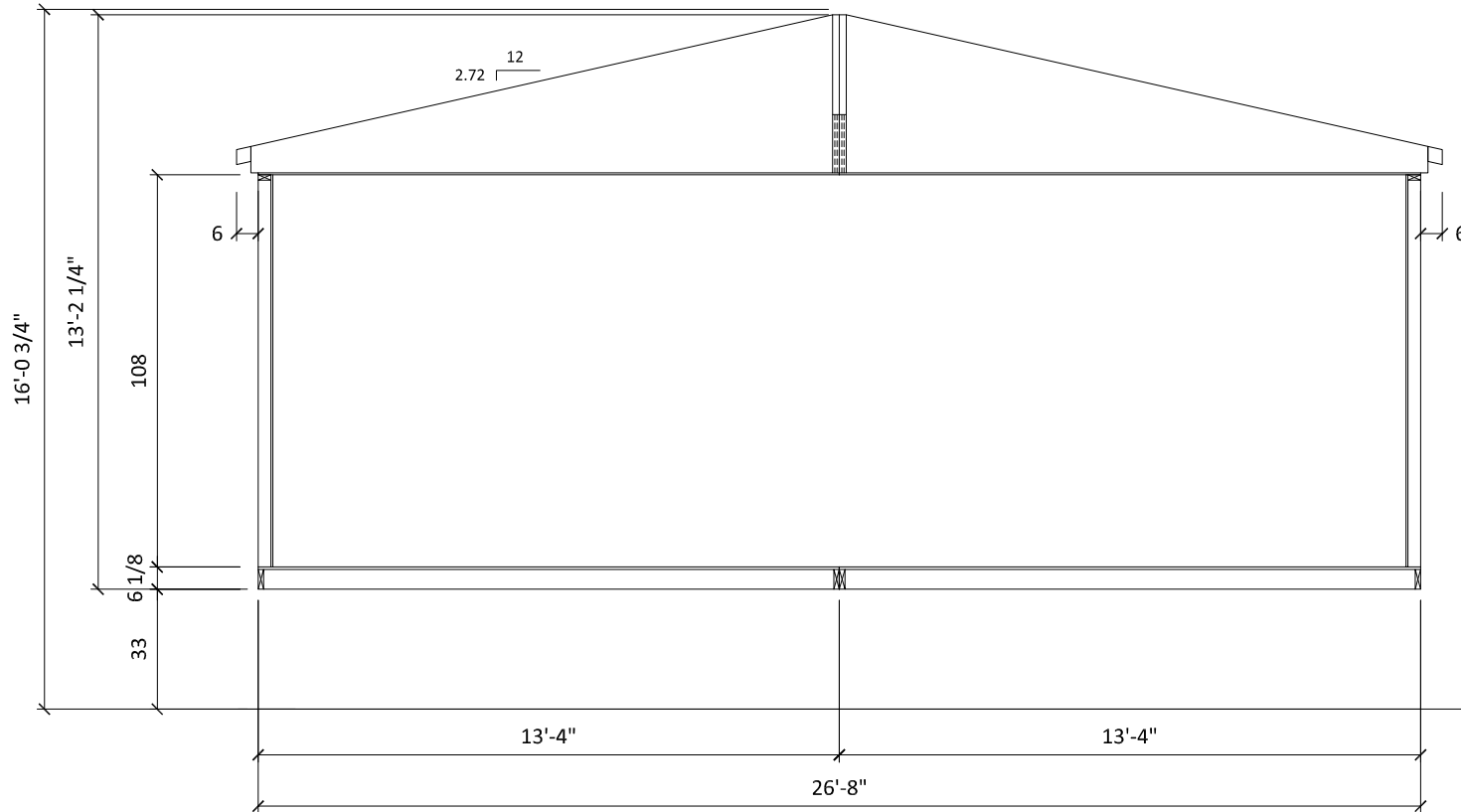
K517G

DAPIA REV. 7

REF NO. ---

F-49-V TRUSS

F-49-V TRUSS



UNIT DIMENSIONS ARE NOT TO BE USED AS SHIPPING DIMENSIONS.

CUSTOMER: ----



DIVISION 31, P.O. BOX 670  
SAN JACINTO, CA 92581  
(951) 654-9321

REVISIONS

REVISION DATE:

DRAW DATE: 6-30-17

DRAWING TITLE:

MODEL NO.

MODEL REV. H

SHEET NO. AS-101

REVISION BY:

DRAWN BY: DCS

CROSS SECTION  
5628-3BD-2BA

K517G

DAPIA REV. 7

REF NO. ---