

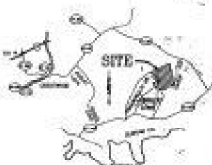
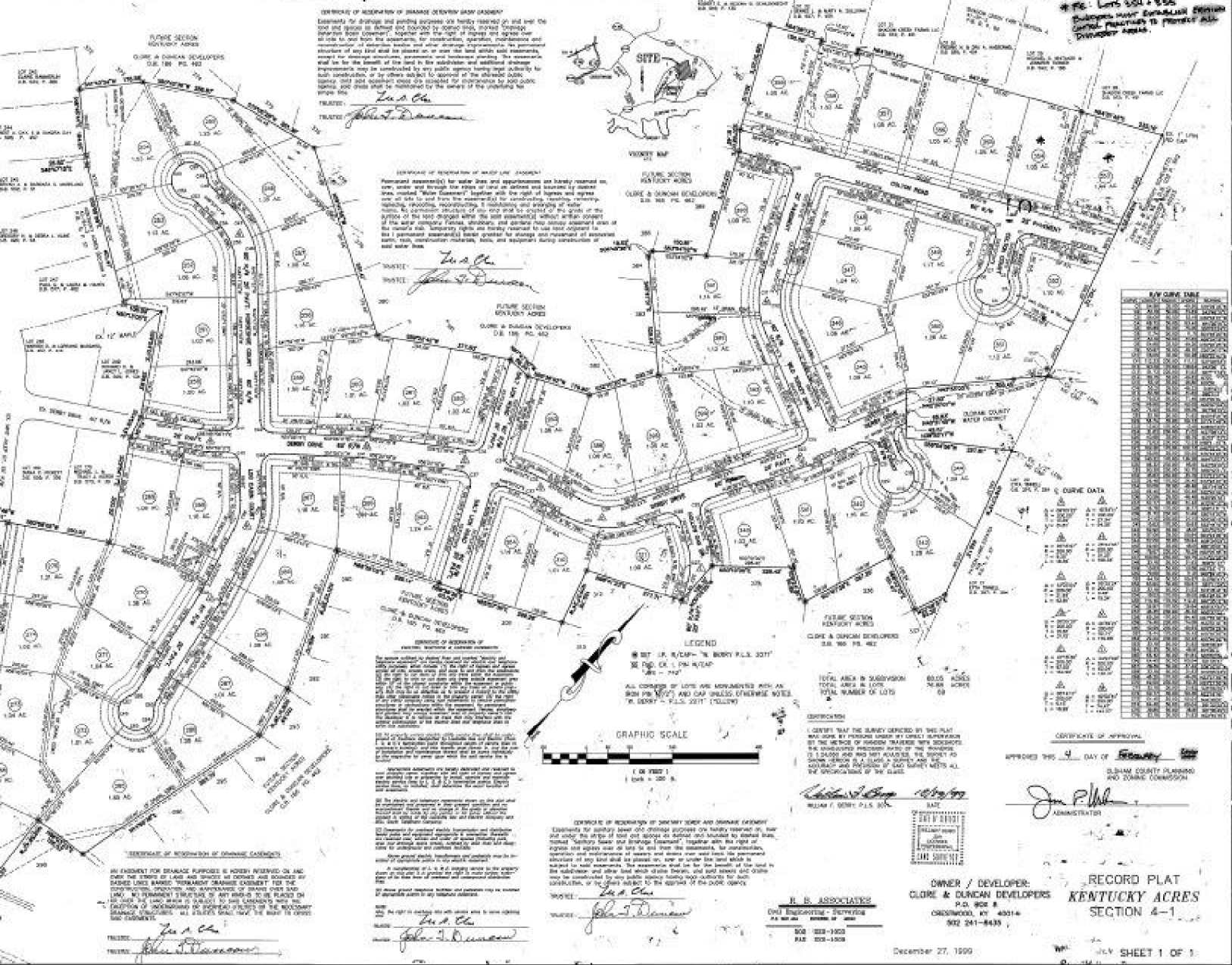
4-FC - Lots 504 - 596
Subdivision under Development Pending
County Records to Permit All
Development Areas

CERTIFICATE OF APPROVAL

CERTIFICATE OF APPROVAL OF DRAINAGE DESIGN WORK (ADJUST)

Exemptions for drainage and grading purposes are hereby granted on and over the land shown and depicted on the plat of the subdivision, in and including the lands hereinafter described, for the purposes of construction, operation, maintenance and reconstruction of water courses and other drainage improvements, the general character of which shall be subject to the approval and written consent of the subdivision engineer and the board of supervisors, and the improvement may be constructed by any public agency having jurisdiction for such construction, or by other public agency approved by the subdivision engineer, and such approval shall be subject to the terms of the plat of the subdivision.

STATE OF KENTUCKY
COUNTY OF BLENCHEN
I, **John T. Duncanson**, Surveyor for the State and County Approved to Survey, certify that I have personally surveyed the above described plat of the subdivision and that the same is in accordance with the laws of the State and County and that the same is a true and correct copy of the original survey as shown to me and that the same is in accordance with the laws of the State and County.



BY CURVE DATA table listing curve information for various sections of the subdivision. Includes columns for Curve No., Stationing, Curve Type, Radius, etc.

CERTIFICATE OF APPROVAL AND DESIGN

I hereby certify that the undersigned is the owner of the land shown and depicted on the above described plat of the subdivision and that the same is in accordance with the laws of the State and County and that the same is a true and correct copy of the original survey as shown to me and that the same is in accordance with the laws of the State and County.

CERTIFICATE OF APPROVAL OF LOT LAYOUT

The system of streets, lanes, alleys, and easements shown on this plat is hereby approved and the same are hereby granted on and over the land shown and depicted on the above described plat of the subdivision, for the purposes of construction, operation, maintenance and reconstruction of the same, and the improvement may be constructed by any public agency having jurisdiction for such construction, or by other public agency approved by the subdivision engineer, and such approval shall be subject to the terms of the plat of the subdivision.

CERTIFICATE OF APPROVAL OF DRAINAGE DESIGN WORK (ADJUST)

Exemptions for drainage and grading purposes are hereby granted on and over the land shown and depicted on the plat of the subdivision, in and including the lands hereinafter described, for the purposes of construction, operation, maintenance and reconstruction of water courses and other drainage improvements, the general character of which shall be subject to the approval and written consent of the subdivision engineer and the board of supervisors, and the improvement may be constructed by any public agency having jurisdiction for such construction, or by other public agency approved by the subdivision engineer, and such approval shall be subject to the terms of the plat of the subdivision.

CERTIFICATE OF APPROVAL OF DRAINAGE DESIGN WORK (ADJUST)

Exemptions for drainage and grading purposes are hereby granted on and over the land shown and depicted on the plat of the subdivision, in and including the lands hereinafter described, for the purposes of construction, operation, maintenance and reconstruction of water courses and other drainage improvements, the general character of which shall be subject to the approval and written consent of the subdivision engineer and the board of supervisors, and the improvement may be constructed by any public agency having jurisdiction for such construction, or by other public agency approved by the subdivision engineer, and such approval shall be subject to the terms of the plat of the subdivision.

CERTIFICATE OF APPROVAL OF DRAINAGE DESIGN WORK (ADJUST)

Exemptions for drainage and grading purposes are hereby granted on and over the land shown and depicted on the plat of the subdivision, in and including the lands hereinafter described, for the purposes of construction, operation, maintenance and reconstruction of water courses and other drainage improvements, the general character of which shall be subject to the approval and written consent of the subdivision engineer and the board of supervisors, and the improvement may be constructed by any public agency having jurisdiction for such construction, or by other public agency approved by the subdivision engineer, and such approval shall be subject to the terms of the plat of the subdivision.

CERTIFICATE OF APPROVAL OF DRAINAGE DESIGN WORK (ADJUST)

Exemptions for drainage and grading purposes are hereby granted on and over the land shown and depicted on the plat of the subdivision, in and including the lands hereinafter described, for the purposes of construction, operation, maintenance and reconstruction of water courses and other drainage improvements, the general character of which shall be subject to the approval and written consent of the subdivision engineer and the board of supervisors, and the improvement may be constructed by any public agency having jurisdiction for such construction, or by other public agency approved by the subdivision engineer, and such approval shall be subject to the terms of the plat of the subdivision.

CERTIFICATE OF APPROVAL OF DRAINAGE DESIGN WORK (ADJUST)

Exemptions for drainage and grading purposes are hereby granted on and over the land shown and depicted on the plat of the subdivision, in and including the lands hereinafter described, for the purposes of construction, operation, maintenance and reconstruction of water courses and other drainage improvements, the general character of which shall be subject to the approval and written consent of the subdivision engineer and the board of supervisors, and the improvement may be constructed by any public agency having jurisdiction for such construction, or by other public agency approved by the subdivision engineer, and such approval shall be subject to the terms of the plat of the subdivision.

LEGEND
ALL CORNERS OF LOTS ARE MONUMENTED WITH AN IRON NAIL OR IRON PIPE - 1/2 IN. DIA. OR 1 IN. DIA. AT THE POINTS AND AT THE INTERSECTIONS OF THE LINES OF THE LOTS.
GRAPHIC SCALE
1 IN. = 100 FT.
1 CM. = 30 FT.

TOTAL AREA OF SUBDIVISION 602.5 ACRES
TOTAL AREA OF LOTS 42.8 ACRES
TOTAL NUMBER OF LOTS 59

CERTIFICATE OF APPROVAL
I HEREBY CERTIFY THAT THE SURVEY SHOWN ON THIS PLAT WAS DONE BY PERSONS UNDER MY DIRECT SUPERVISION AND THE SURVEY OF THE SAME TRAVELERS WITH CORRECT INSTRUMENTS AND METHODS AND I HEREBY CERTIFY THAT THE SAME IS A TRUE AND CORRECT COPY OF THE ORIGINAL SURVEY AND THAT I AM A LICENSED SURVEYOR IN THE STATE OF KENTUCKY AND THAT I AM THE REGISTRAR OF THE SURVEYING PROFESSION IN THE STATE OF KENTUCKY.

CERTIFICATE OF APPROVAL
APPROVED THIS 4 DAY OF February 1990

ADMINISTRATOR

STATE OF KENTUCKY
COUNTY OF BLENCHEN
I, **John T. Duncanson**, Surveyor for the State and County Approved to Survey, certify that I have personally surveyed the above described plat of the subdivision and that the same is in accordance with the laws of the State and County and that the same is a true and correct copy of the original survey as shown to me and that the same is in accordance with the laws of the State and County.

STATE OF KENTUCKY
COUNTY OF BLENCHEN
I, **John T. Duncanson**, Surveyor for the State and County Approved to Survey, certify that I have personally surveyed the above described plat of the subdivision and that the same is in accordance with the laws of the State and County and that the same is a true and correct copy of the original survey as shown to me and that the same is in accordance with the laws of the State and County.

B. B. ASSOCIATES
ONE BRIDGEWAY - BLENCHEN
P.O. BOX 8
CROSSWOOD, KY 40314
502 241-8435

OWNER / DEVELOPER:
CLOVE & DUNCAN DEVELOPERS
P.O. BOX 8
CROSSWOOD, KY 40314
502 241-8435

RECORD PLAT
KENTUCKY ACRES
SECTION 4-1

DATE OF THIS SURVEY: 12/27/90
BY: JOHN T. DUNCANSON
TITLE: SUBDIVISION PLAT
COUNTY: BLENCHEN