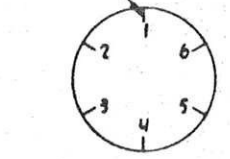
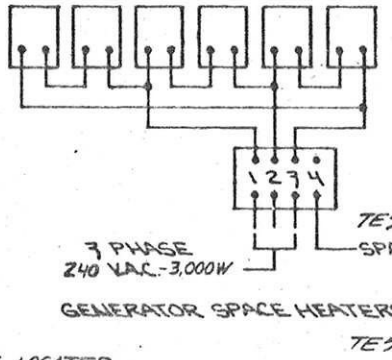
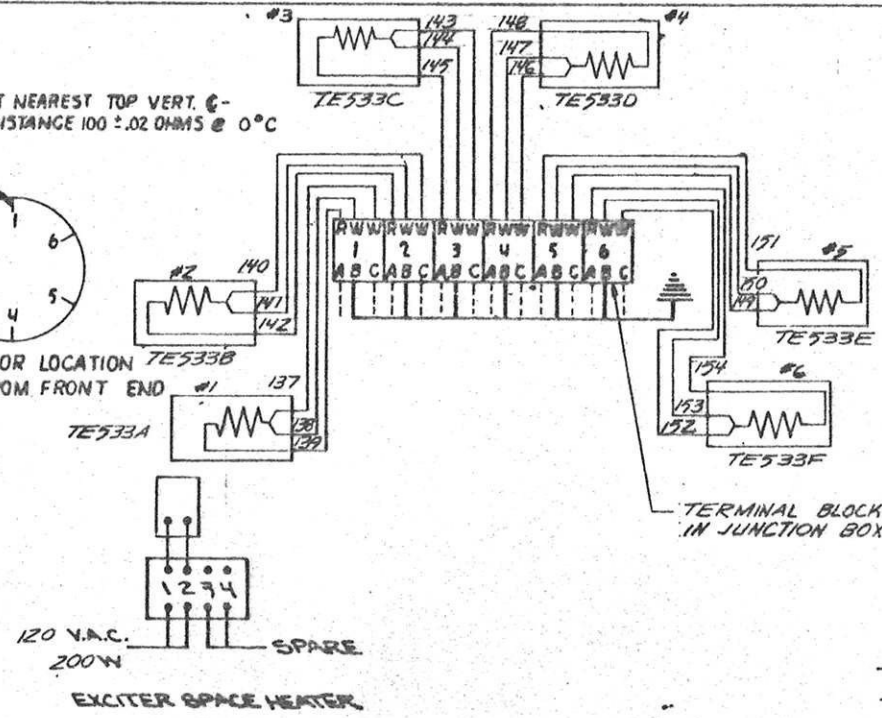




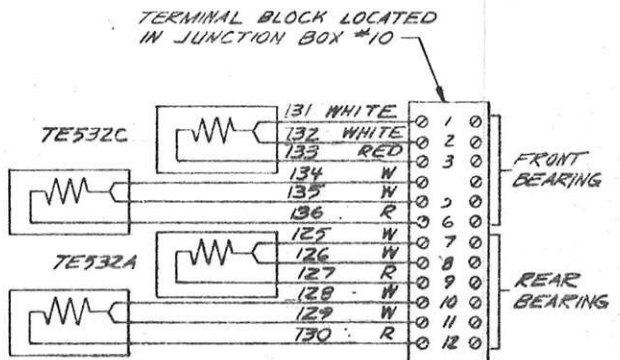
SLOT NEAREST TOP VERT. C-  
RESISTANCE 100 ± .02 OHMS @ 0°C



DETECTOR LOCATION TE533B  
VIEWED FROM FRONT END



7 PHASE  
240 VAC - 3,000W  
GENERATOR SPACE HEATERS

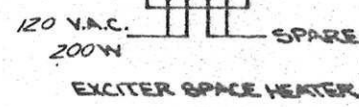


TERMINAL BLOCK LOCATED  
IN JUNCTION BOX #10

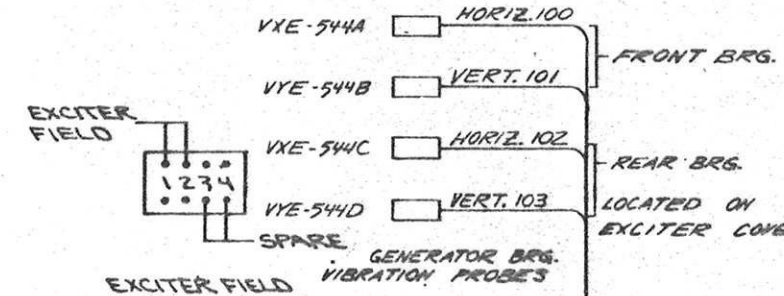
FRONT  
BEARING

REAR  
BEARING

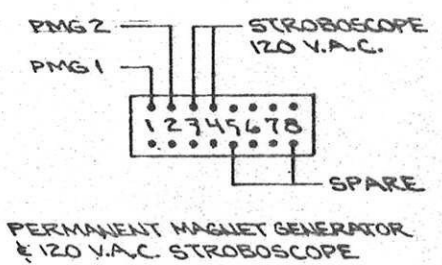
BEARING TEMPERATURE DETECTORS  
RATED 100 ± .02 OHMS @ 0°C



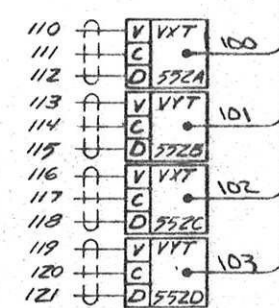
EXCITER SPACE HEATER



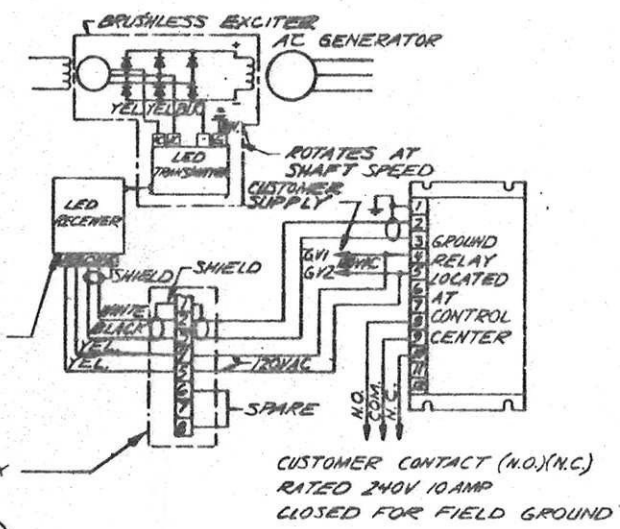
EXCITER FIELD  
GENERATOR BRG.  
VIBRATION PROBES



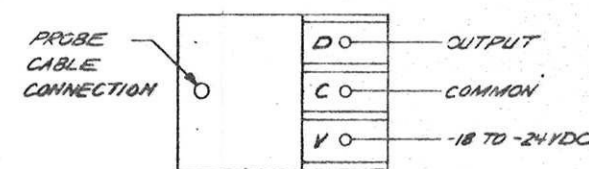
PERMANENT MAGNET GENERATOR  
120 V.A.C. STROBOSCOPE



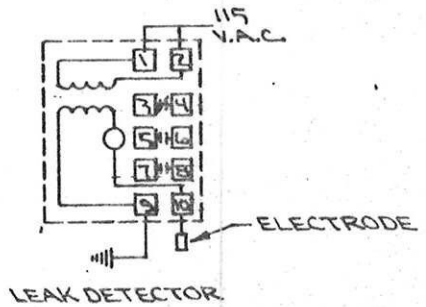
GENERATOR PROXIMITORS  
LOCATED IN JUNCTION BOX #9



CONNECTION DIAGRAM  
GROUND DETECTION SYSTEM



PROXIMETER CONNECTION  
(2 PER BEARING)  
SEE BOTTOM LEFT

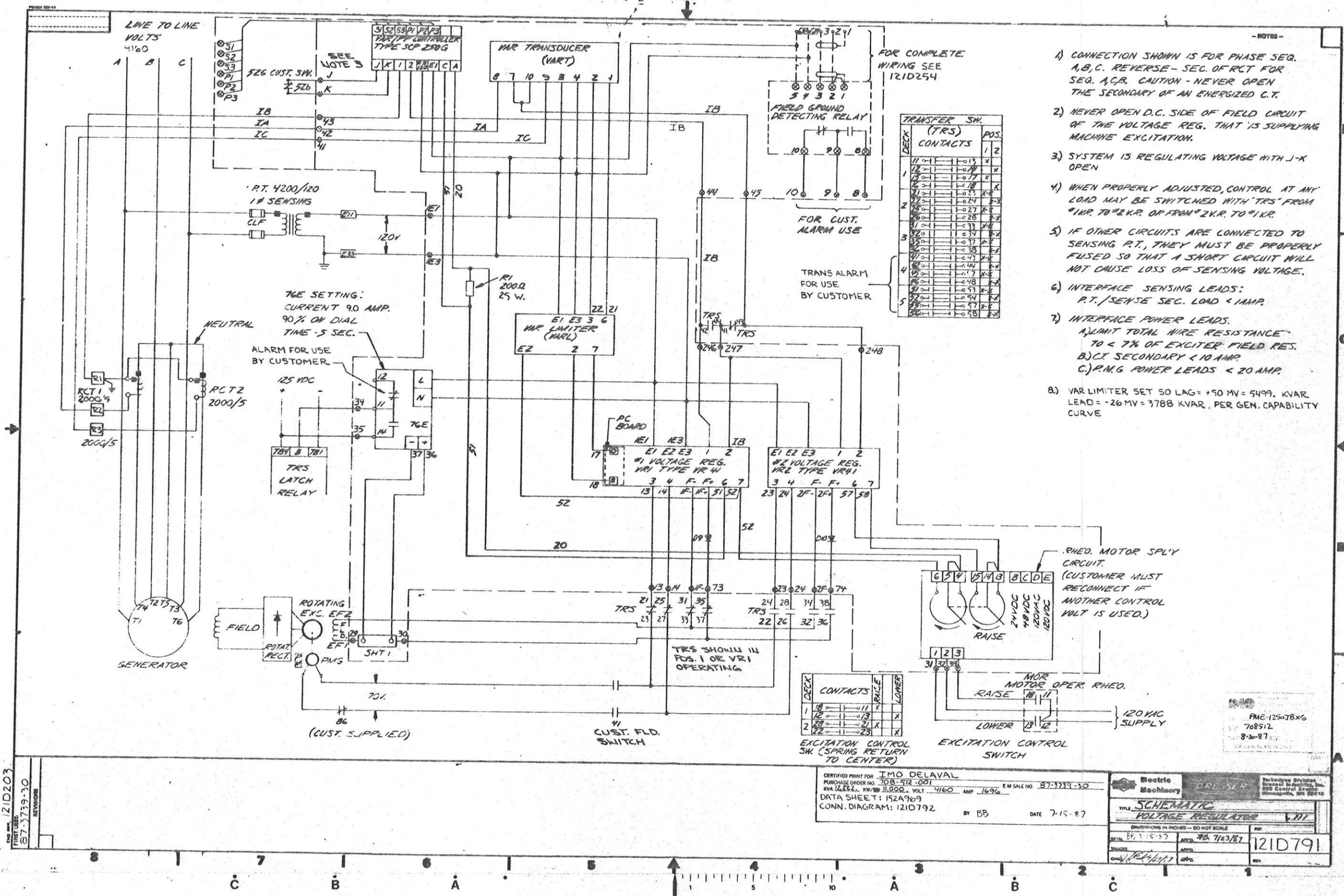


LEAK DETECTOR

Electric Machinery  
DRESSER  
PME-125078X 3  
708512  
7-31-87  
OR IDENTIFICATION ONLY

CERTIFIED PRINT FOR PURCHASE ORDER NO. 1470 DELAVAL 708-912-001		INSURANCE RECOVERY FACILITY E.M. SALE NO. 87-5751-11 RD. 5-26-87	
Electric Machinery DRESSER		Turbomachinery Division Dresser Industries, Inc. 200 Central Express Birmingham, AL 35243	
ELECTRICAL CONNECTIONS			
DIMENSIONS IN INCHES - DO NOT SCALE			
DATE: RB 5-26-87	APPD: 5-23-87	121D659	
TRACER: CHD AE 5/26/87	APPD: 5/26/87	REV A	

1210254  
87-3739-11  
A  
ADDED TERMINAL  
BLOCK IN JUNCTION  
BOX NO. 9  
PROXIMITORS  
STATOR RTDS  
FABR. RTDS  
PER. CUST.  
PER. CUST.  
PER. CUST.  
87-3739-11  
RS 7-28-87



- NOTES:
- 1) CONNECTION SHOWN IS FOR PHASE SEQ. A,B,C. REVERSE - SEC. OF RCT FOR SEQ. A,C,B. CAUTION - NEVER OPEN THE SECONDARY OF AN ENERGIZED C.T.
  - 2) NEVER OPEN D.C. SIDE OF FIELD CIRCUIT OF THE VOLTAGE REG. THAT IS SUPPLYING MACHINE EXCITATION.
  - 3) SYSTEM IS REGULATING VOLTAGE WITH J-K OPEN
  - 4) WHEN PROPERLY ADJUSTED, CONTROL AT ANY LOAD MAY BE SWITCHED WITH "TRS" FROM "VAR. TO 2 K.V. OR FROM 2 K.V. TO "VAR."
  - 5) IF OTHER CIRCUITS ARE CONNECTED TO SENSING P.T., THEY MUST BE PROPERLY FUSED SO THAT A SHORT CIRCUIT WILL NOT CAUSE LOSS OF SENSING VOLTAGE.
  - 6) INTERFACE SENSING LEADS:  
P.T./SENSE SEC. LOAD < 1 AMP.
  - 7) INTERFACE POWER LEADS:  
A) LIMIT TOTAL WIRE RESISTANCE TO < 7% OF EXCITER FIELD RES.  
B) CT SECONDARY < 10 AMP.  
C) P.M.G. POWER LEADS < 20 AMP.
  - 8) VAR LIMITER SET SO LAG = +50 MV = 5499. KVAR  
LEAD = -26 MV = 3788 KVAR, PER GEN. CAPABILITY CURVE

TRANSFER SW. (TRS) POS. 1 2

DECK	CONTACTS	POS. 1	POS. 2
1	11-1	-013	X
1	12-1	-014	X
1	13-1	-017	X
1	14-1	-018	X
1	15-1	-021	X
1	16-1	-024	X
1	17-1	-027	X
1	18-1	-028	X
1	19-1	-033	X
1	20-1	-034	X
1	21-1	-035	X
1	22-1	-037	X
1	23-1	-040	X
1	24-1	-047	X
1	25-1	-048	X
1	26-1	-053	X
1	27-1	-054	X
1	28-1	-057	X
1	29-1	-058	X

EXCITATION CONTROL SW. (SPRING RETURN TO CENTER)

DECK	CONTACTS	RAISE	LOWER
1	18-1	-011	X
1	19-1	-013	X
1	20-1	-021	X
1	21-1	-023	X

MOR MOTOR OPER. RHEO.

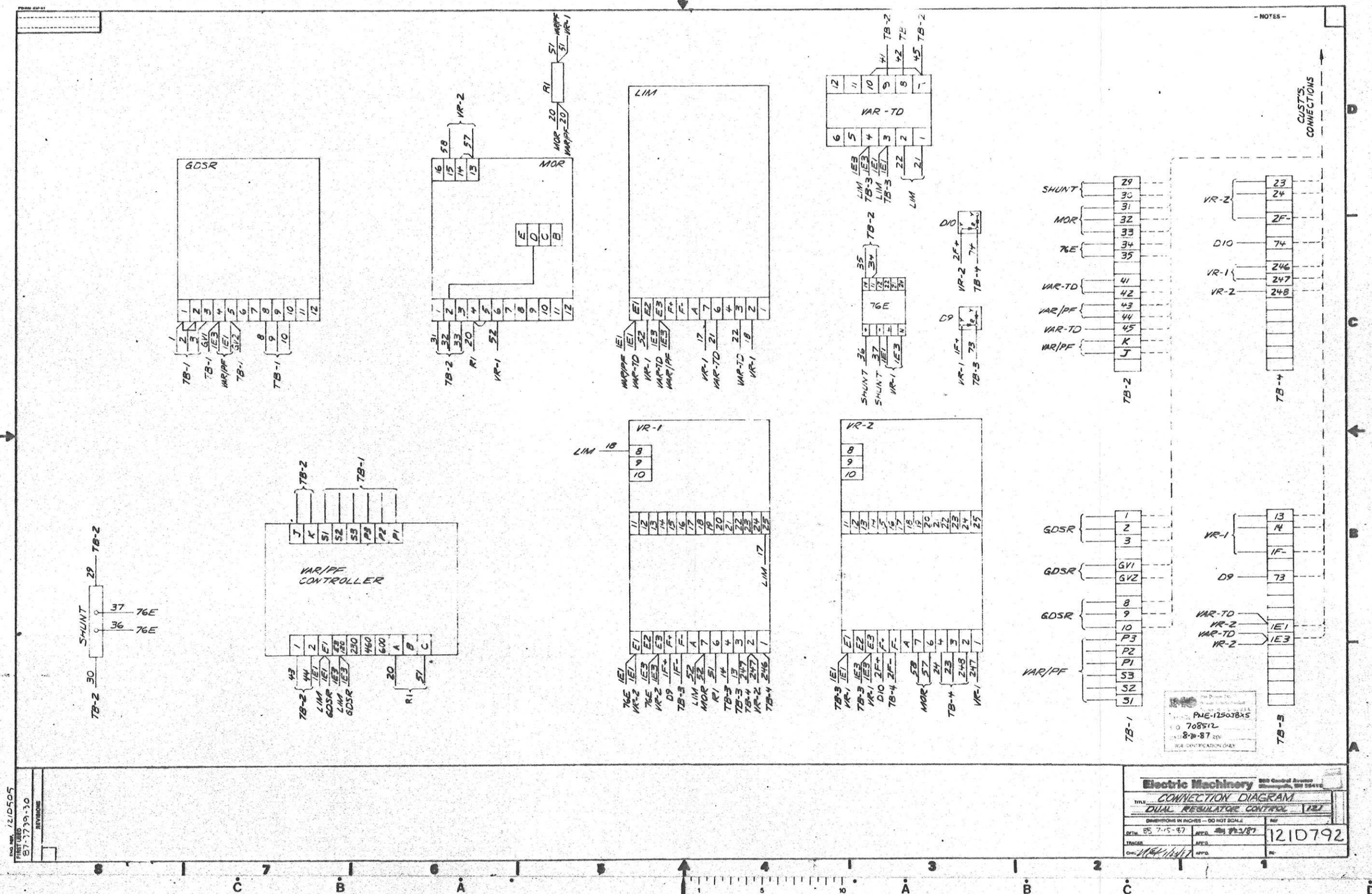
DECK	CONTACTS	RAISE	LOWER
1	18-1	-011	X
1	19-1	-013	X
1	20-1	-021	X
1	21-1	-023	X

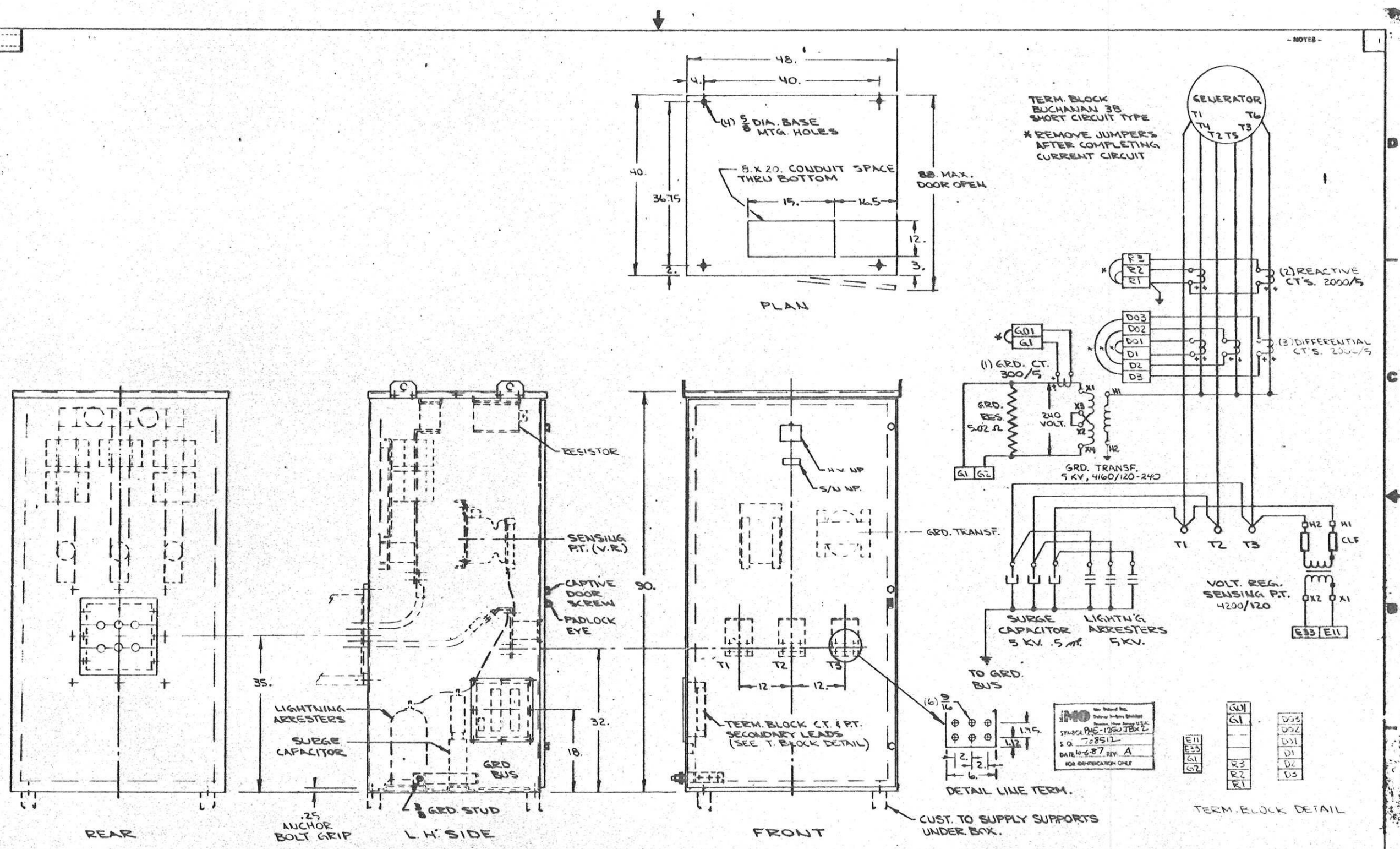
CERTIFIED PRINT FOR TMO DELAVAL  
PURCHASE ORDER NO. 708-512-001  
KVA 12,222 KW/88 11,000 VOLT 4160 AMP 1696  
DATA SHEET: 152A969  
CONN. DIAGRAM: 121D792  
BY BB DATE 7-15-87

Heitric Machinery DRESSER

121D791







87-3739-30

REV'D CONDUIT SPACE PER SPACE #7 MOVED GRD. CT. TO SEC. SIDE OF TRANSF.

CERTIFIED PRINT FOR **IMO DELVAL**

PURCHASE ORDER NO. 708-912-001

KVA 12,222.2, KW 8800, VOLT 4160, AMP 1696

ENCLOSURE: NEMA III

POTENTIAL TRANSF. WX. VIZ -75 #7525A67G02

CURRENT TRANSF. WX. RCT-15 #817A310G13

TOTAL WT. 2000 LBS.

BY RB DATE 7-15-87

**Electric Machinery**

**DRESSER-RAND**

STEAM TURBINE MOTOR & GENERATOR DIVISION

MINNEAPOLIS, MN 55413

**OUTLINE DIAGRAM**

MAIN TERM. BOX

DIMENSIONS IN INCHES - DO NOT SCALE

DATE 7-15-87

1210793

REV. A