

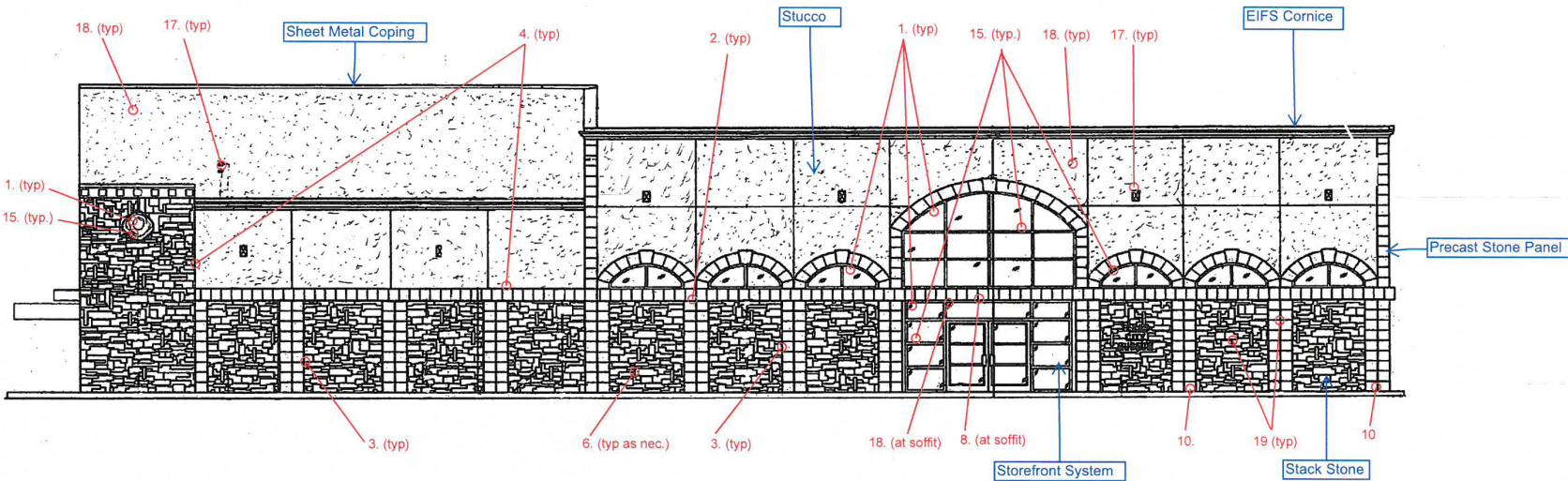


CITY OF TEXAS CITY MUSEUM  
409 6<sup>TH</sup> STREET  
TEXAS CITY, TEXAS

NOTES

1. Replace sealant and backer at perimeters of windows, doors, and existing control joints in brick.
2. Route out mortar and install backer rod and sealant between adjacent precast stone panels.
3. Route out mortar and install backer rod and sealant between precast stone panels and stack stone.
4. Route out mortar and install backer rod and sealant between adjacent precast stone panels/stone and stucco.
5. Apply sloped mortar at top of projecting precast stone panels and coat with elastomeric coating.
6. Perform miscellaneous tuckpointing of stack stone mortar joints.
8. Route and repair cracks in stucco.
10. Replace damaged precast stone panels.
15. Apply bond breaker tape and sealant at glass-to-frame joints of storefront system.
17. Apply sealant around wall penetrations.
18. Clean exterior surface of stucco and apply elastomeric coating.
19. Clean exterior surface of precast stone panels and stack stone, and apply clear sealer.

LEGEND  
Add control joint  
Step cracks  
Disbonded plaster



EAST ELEVATION