

League of Women Voters
Warren County, Pennsylvania



Know Your County

Know Your County

League of Women Voters of Warren Area

2016

Warren, Pennsylvania

Cover photo courtesy of Elissa Davis

A Handbook of
Government and Services
in Warren County

Reformatted for user-friendly printing

For the purpose of the Warren County League of Women Voters to encourage informed and active participation in government on all levels and to provide resources to deal with daily life.

Table of Contents

History of Warren County, Pennsylvania...page 6

Structure and Functions of County Government...page 8

Other County Services...page 15

Voters Elect diagram...page 16

Popular Control of Government...page 18

Other County Services cont'd...page 20

History of Warren County

Within the tapestry of Warren County history the threads of conflict and community are interwoven. The early history of this area was based on conflict, as Seneca, French, English and later, Americans struggled for control of the land. In the nineteenth century with the arrival of "settlers" from the new United States came the creation of new communities. Soon after came houses, farms, schools, businesses and industries. Many of these early features are still visible in the landscape today.

By the sixteenth century the Seneca, members of the Iroquois Indian Nation, controlled the area which is now Warren County. In the eighteenth century, the most noted Seneca was the famous Cornplanter, the son of a Dutch trader from Albany and a Seneca mother. After fighting for the British during the Revolution, Cornplanter switched his allegiance and became a defender of the new American government, and an instrument in establishing treaties between with the American government and the Iroquois Nation.

Despite the opposition of some of his contemporaries, Cornplanter warded off Indian incursions from the West. He was rewarded for his efforts with an outright gift by the Pennsylvania Commonwealth of several parcels of land, one of which—the Cornplanter Grant—became his home until his death in 1836. Until the waters of the Allegheny Reservoir flooded all but the highest portion of the Grant in 1965, Cornplanter heirs lived on their ancestral land.

The French, the first European Americans to deal with the Indians of the area, had traded annually with them prior to 1749. In that year, Celeron de Blainville led an expedition sent by the government of New France to establish French sovereignty over the Ohio Valley which was being threatened by increasing British incursions. Near the mouth of the Conewango Creek, on the south bank of the Allegheny, he buried a lead plate signifying this sovereignty. During the ensuing years, after the French influence ended and the Revolution established American independence, men began to recognize the suitability of the land for permanent settlement. The fine bottomland at the confluence of the Conewango and the Allegheny was natural location for a town, and extensive pine forest offered a seemingly inexhaustible supply of timber.

In 1795, the town of Warren—named for distinguished patriot, General Joseph Warren, Killed in the battle of Bunker or Breed's Hill—was laid out by the Surveying team lead by General William Irvine and Andrew Ellicott. Warren's first structure (which stood until 1840) was a log building erected by the Holland Land Company as a supply depot. In about 1806 the first settlers began to locate in Warren, and the town was incorporated as a borough in 1832. With few exceptions, the earliest inhabitants of Warren were Scotch-Irish, from southeastern Pennsylvania, and New Englanders. Successive waves of immigrants arrived from Germany, Sweden, and Italy during the remaining years of the century. Their descendants are numerous.

The county, 902 square miles in area, was erected out of Lycoming and Allegheny Counties by an act of legislature in 1800. In 1805, it was attached to Venango for judicial purposes; but in 1819, after a sufficient increase in population, it was organized as a full-fledged county. It is bordered on the north by New York State, on the east by McKean County, on the west by Crawford and Erie Counties, and on the south by Venango and Forest Counties. Most of the land in the eastern and southern parts of the county is broken and hilly; the northwestern section is mostly glacial territory. Altitude ranges from 1200 to over 2000 feet above sea level. Originally, hardwood forest covered much of the western portion, while large stands of pine and hemlock grew in the creek alleys and southeast of the Allegheny River. The river and its three major tributaries in Warren county--the Conewango, Brokenstraw and Kinzua Creeks--were natural waterways for the rafting of lumber, which was the county's main industry for many years. Sawing and rafting of lumber continued to be a major activity late in the 1800s.

Prior to 1830, only the keelboat provided two-way river transportation from Pittsburgh. but beginning with the arrival of the steamer "Allegheny" in 1830, a succession of steamboats from Pittsburgh served as transportation until the early 1860s, just a few years after the Sunbury and Erie Railroad was completed from Erie to Warren. By 1883, Warren had the hub of a network of railroads leading in all directions.

As the rafting of lumber declined, and as the arable land was cleared of its timber, farming began to flourish, particularly in the northwest section of the county.

In addition, the manufacture of furniture and other wood products expanded; the availability of hemlock bark led to the establishment of a large tanning operation in the Sheffield are; and the fabrication of products from iron began its steady climb. Concurrent with he arrival of the railroad in Warren, oil was discovered at Titusville. In a short time, an oil boom developed in Warren County. It added yet another major industry, and by the early 1900s there were 13 refineries within a six-mile radius of Warren. Sensational oil finds occurred in numerous locations, including Tidioute, Cherry Grove, and Clarendon. Oil production and refining still hold an important position in the county.

For many years the town of Warren has been favored with a diversified industry; it has suffered less than many other localities in time of depression. Those businesses in the county which have declined have been replaced by others more modern and comprehensive, and over the years the trend has been toward light industry. Although farming has decreased in importance in the county, its status today is more stable than in many other parts of the state.

Structure and Functions of County Government

County Governing Body-County Commissioners

The county governing body operates under the general law of the State Constitution which provides for a Board of Commissioners composed of three members who must be citizens of the United States and residents of the County for one year. The County Commissioners are elected at large with each voter voting for two candidates. Each political party nominates two candidates. The three candidates receiving the highest number of votes (two of one party, one of the other party) compose the Commission to serve a four-year term. Commissioners elect one member Chairman to preside at meetings. The County Commissioners' annual salary is set by the State Legislature, in addition they are legally designated a Trustee of the Hoffman Estate and of the Rouse Estate, Inc. The County Commissioners are responsible for budgets, tax rates, borrowing (within state constitutional requirements), offices and supplies for all Officials County grounds and buildings, care of the poor and aged and for child welfare. They administer elections, assess property for taxes and authorize bonds. In a sixth-class County such as Warren, the Commissioners act as a Board of Assessment Appeals. The County Commissioners have appointive powers for special boards and commissions, for supervisors for child welfare and for the aged and the poor, the Chief Assessor, the Chief Clerk and County Solicitor.

Elected County Officials

Auditors—Three county auditors are elected every four years at the same time and under the same system as the Commissioners. Two nominees are chosen by each party during the primary and the three candidates with the highest number of votes in the general election become the county auditors. The three auditors reconcile, verify, and adjust all accounts applicable to the county government on a monthly basis and conduct an annual audit for state reporting purposes.

Coroner—The coroner serves a four-year elected term. The coroner investigates deaths of suspicious or violent nature and is assisted by a coroner jury of inquest when called to determine the cause of death. When inquests are warranted, the coroner is empowered to perform autopsies, subpoena witnesses, administer oaths, and compel attendance at an inquest upon threat of imprisonment. The coroner is required to issue a certificate of cause of death when it occurs without medical attention or attendance.

District Attorney and Assistants—The District Attorney serves a four-year elected term, must be a resident of Warren County for one year and a member of the Pennsylvania Bar. The DA and assistants sign all criminal information and conduct all in-court criminal

prosecutions in the name of the Commonwealth. Assistant District Attorneys and a County Detective are appointed to assist in criminal investigation and prosecution of the cases before the Courts.

Jury Commissioners—The county code provides for election of two jury commissioners. Their duties are limited to providing a jury panel for the ensuing court year. They are authorized to appoint a clerk to assist in performing this function.

Prothonotary—The prothonotary serves a four-year elected term. The prothonotary is the clerk of the court of common pleas, and keeps records of all civil procedures before the courts, signs all writs and processes (such as suits) and files copies of all records and processes. The duties and responsibilities of the prothonotary and other court related offices are set forth throughout the County Code and other state laws. The prothonotary takes bail in civil actions, enters judgments at the instance of plaintiffs, and, upon the confession of defendants, signs all judgments and takes the acknowledgment of satisfaction of judgments or decrees entered on the records of the court. The prothonotary can also administer oaths and affirmations, and is required by state law to maintain the judgment docket. The prothonotary is the Commonwealth's agent for the collection of the tax on original writs and other records received and is responsible for records including the minute book for the court of common pleas, trial and argument list, and similar records. The office receives petitions in connection with roads and rights of way, recording the action of members of boards of view, and eminent domain proceedings. This office also processes naturalization papers, and obtains information and makes records and arrangements for naturalization court. Other services include applications for passports, and recording divorce.

Register of Wills and Recorder of Deeds—The Register and Recorder performs duties: registering of wills and recording of deeds and other land records, clerk of orphans' court, marriage licenses, adoptions, and processing guardianships.

Sheriff—The Sheriff serves a four-year elected term principally as an officer of the court. The main duties involve delivering and carrying out orders of county courts. Sheriffs serve various writs, processes, and other judicial documents, provide courthouse security, prisoner transport, assistance in impaneling juries and in executing sheriff's sales.

Treasurer—The Treasurer serves a four-year elected term. Duties of the county treasurer include receipt, custody, and disbursement of all county monies and, as an agent of the state, issues dog, hunting and fishing licenses. The office pays all bills on order from the commissioners, and collects delinquent taxes.

Elected Officers of the Court

President Judge—President Judge is elected to a ten-year term as a Judge of the 37th Judicial District for Warren and Forest Counties. The salary is set and paid by the state according to population.

Judge—Judge is elected to a ten-year term as a Judge of the 37th Judicial District for Warren and Forest Counties. The salary is set and paid by the state according to population.

Clerk of Courts—This officer is elected to a four-year term and also serves as the county's prothonotary and chief notary. The chief clerk is the record keeper for the criminal courts. The clerk keeps all papers filed under criminal and civil procedures of the courts and is responsible for maintaining the minute book and the records of all similar procedures of the courts. The office of the Clerk of Courts is reputed to be one of the oldest in the state.

Appointed Officers of the Court

Bailiff—Open and closes court sessions and help to keep order in the court.

Jury Guard—Guards juries during jury trial terms.

Court Reporter—Records all court proceedings.

Court Librarian—In charge of the law library and all legal volumes in use by the court or its officials. The county court records, civil and criminal, are open to the public.

Corrections—Warren County Prison—The county prison is operated by the Sherriff's Office. The general operating budget is submitted for approval to the county commissioners. There are separate facilities for men and women prisoners, age 18 years-old and older.

Corrections—Probation and Parole—The Chief Probation Officer is appointed by the judge, the Adult Probation Department is operated according to standards and regulations set by the Pennsylvania Board of Probation and Parole of the Department of Justice.

Adult Probation—The Adult Probation Office is to serve and protect the citizens of Warren County by providing accurate and timely information to the Court prior to disposition and effective supervision after disposition. Supervision shall always place protection of the public as the highest priority while recognizing the needs of the offender.

Assessment Office—This office determines values, updates records, prepares reports, and also prepares the tax documents. A Chief Assessor is appointed by the Board of Commissioners in turn assembles staff and equipment necessary to carry out the functions of determining property value, maintaining assessment records and preparing required reports.

Courts —The Courts is an office of the 37th Judicial District that maintains a website at www.warrenforestcourt.org. The Court of Common Pleas receives motions and petitions in Civil, Criminal and Orphans Court matters which are scheduled to come before the judges as trials, hearings, or arguments. This department also encompasses the departments of Adult Probation, Juvenile Probation, Court Hearing Office, and Domestic Relations.

Domestic Relations —This is an office of the 37th Judicial District. Services include: establishment and enforcement of child support orders, modification of support orders, paternity establishment services, parent locator services, medical support establishment and enforcement.

County Board of Elections —County Commissioners serve as the county board of elections and perform all duties imposed upon them by the Pennsylvania Election Code. Commissioners conduct the County Board of Elections meetings and appoint a chief clerk and other county employees and assistants to administer election and voter registration. The County Board must certify election results and voter registration totals to the Department of State as required by law.

The Voter Director of Elections is responsible for all aspects of the elections including, but not limited to: select and equip polling places, purchase and preserve voting booths (voting equipment) and supplies, appoint employees, issue watcher's certificates, prepare and publish notices and advertisements, receive petitions and nomination papers, investigate allegations of vote fraud, announce election results, issue certificate to successful candidates.

Family Hearing Office —This is an office of the 37th Judicial District. The Family Hearing Office assists parents in working out the terms of their shared custody agreement in a non-adversarial manner. Forest/Warren Counties Human Services is located at 27 Hospital Drive in North Warren. Services assist those who have mental health, intellectual disabilities, early intervention, alcohol/tobacco/other drugs addictions. The children and youth services helps families to fulfill their desires to develop and maintain a life that allows them to reach their fullest potential. Some services are provided by staff, and other services are referred to private providers.

Following are examples but not inclusive-mental health, child and adolescent programs, case management and support services, adoption, family support and decision making, crisis intervention, foster care, parent education & training, protective services, information and referral of services, counseling, and homemaker & educational support services.

Juvenile Probation —Juvenile Probation is also office of the 37th Judicial District. Juvenile Probation holds juveniles referred to the department accountable for offenses committed, protect the safety of the juvenile and community, and restore the victim in each case. Referrals are received from local Law Enforcement, District Justices, and surrounding Counties. We also provide courtesy supervision for juveniles residing in Warren County from another state.

Types of Probation: Intensive Probation, Intensive Drug & Alcohol, Aftercare/ Intensive Probation, School Based Probation, Community Service/Restitution, Examples of Operated By Juvenile Probation: Students' Accountability in The Community Program, ISS/OSS Study Group, JAIBG/WASU Program, County Community Service Program, Electronic Monitoring, and Drug Screening, etc.

Planning and Zoning —Preparation of the County Comprehensive Plan. Administration of the Warren County Zoning Ordinance in 13 of the county's 27 municipalities. Administration of the Warren County Subdivision and Land Development Ordinance. Administration of the federally funded Community Development Block Grant (CDBG) and HOME Programs for eligible housing and community improvement projects. Warren County's 12-year Transportation Plan. Review of proposed zoning amendments, subdivision and land development plans.

Commission's Office maintains information on: Floodplains and Zoning, State and Federal Grant Programs, Programs available to businesses, Census 2010 data, and Recreational trail projects, Regional or multi-county planning projects include: Lumber Heritage Region Park, Scenic Route 6, and Pennsylvania WILDS.

Public Defender

The Public Defender is responsible for furnishing legal counsel to any person who, for lack of sufficient funds, is unable to obtain legal counsel in any situation where representation is constitutionally guaranteed. In general, a person is entitled to legal counsel whenever that individual's personal liberty is at stake. This would include capital crimes, misdemeanor and felony offenses, summary offenses that carry a mandatory sentence of incarceration and commitment proceedings under the Mental Health Procedures Act. In Warren County, eligibility for public defender services is based on federal poverty guidelines. Income, family financial responsibilities and the nature of the charges are all considered in determining qualification for legal representation by the public defender.

Client interviews are conducted and every applicant must bring a copy of their charges and verification of income or support.

Warren County Recreation—currently not supported by county funds

The essential functions of the Director include, but are not limited to the following responsibilities: To develop, maintain, and promote the Warren County Bike Hike Trail. Also, to coordinate efforts to maintain snowmobile, hiking, ATV, equestrian, and other recreational trails on non-County owned lands in conjunction with volunteers and other state and federal agencies. Responsibilities include coordinating events such as the annual Winterfest or any other program that the Commissioners may designate. These events attract visitors to Warren County. The Northern Alleghenies Vacation Region and other organizations work collaboratively with the Recreation Director to promote activities for potential visitors.

The Recreation Director enhances these opportunities in Warren County through the development of high quality recreational assets, coordination of selected events, and service as a technical resource to community organizations and local governments involved in compatible activities. It is, also, the responsibility of this director to supervise the summer playground staff.

Veteran Affairs

The County Commissioners appoint a Director of Veterans' Affairs (DVA) whose duty it is to oversee those obligations assigned to the county by law. The Director of Veterans' Affairs becomes the contact for all matters concerning active duty military personnel, ex-military personnel, and certain survivors. The DVA also maintains liaison with the various veterans organizations within the county.

The DVA will assist veterans in the filing of claims such as service record changes, disability claims, etc. At the time of a veterans' death, the DVA will assist the family in filing claims for the death benefits including burial expenses and appropriate grave markers.

The county has an obligation to maintain a record of where each veteran is buried within the county and other data pertaining to their military service. This compilation is known as the Veterans Grave Registration Record. The county is also required to decorate each veteran's grave with a US made flag on Memorial Day and to insure that all veterans' grave sites are maintained.

Voter Registrar

This person processes all applications and voter registration changes received through the US Mail, office applications, and reports generated from the Department of Transportation through the Department of State in batches delivered electronically via a Pennsylvania database called (SURE) Statewide Uniform Registry of Electors. The SURE system is assisted by (HAVA) Help America Vote Act adopted by Congress in 2002.

The Voter Registrar will approve or decline voter registration applications based on information generated by the applicant and HAVA. To be a registered voter in Pennsylvania, the following qualifications are required: You must be at least 18 years of age. You must be a citizen of the United States. You must reside in the Commonwealth of Pennsylvania and in your election district for at least 30 days prior to the next election.

Other County Services

Public Safety—100 Dillon Drive, Youngsville

Emergency management and 911 Emergency systems CPR, First Aid, etc. for professionals and the general public.

Warren County Historical Society—210 Fourth Avenue, Warren

Their mission is to provide educational programming through the use of local historical artifacts, images, documents, and textiles to promote the county's heritage. The Wilder Museum of Warren County History (a holding of the organization) is located at 51 Erie Avenue in Irvine, Pa.

Warren Co. Chamber of Business and Industry—308 Market Street, Warren

The WCCBI provides resources to promote Warren County businesses and services as a good place to live and work.

Warren/Forest Higher Education Council—589 Hospital Dr., N. Warren

Provides education and new skills, for career development, plus personal enrichment for life long learners.

Warren County Public Library—205 Market Street, Warren

Citizens have access to online databases, digital collections services of the interlibrary loan, world wide web, satellite teleconferencing, books and materials for all ages and interests, plus many children and adult educational and community events.

Penn State Warren County Extension—100 Dillon Avenue, Youngsville

Educators help individuals, families, businesses with productive, profitable and competitive agriculture and food business, plus the vitality of natural resources, understanding of complex public issues, plus information to strengthen families and individuals of all ages. The educator coordinates 4-H youth development programming.

Warren County Conservation District—210 North Dr. Suite E, and corner of Hatch Run Rd and Conewango Avenue, North Warren

Educates the public and provides technical conservation expertise to land owners on stewardship, management of soil, water resources and other environmental problems.

They provide a program of prevention, preparedness, response, recovery and mitigation for emergencies of any type, whether man made or technological in nature.

Voters Elect



Board of Commissioners

Jury Commissioners

2 members

4-year term



Auditor

3 members

4-year term



Treasurer

Prothonotary also

serves as

Clerk of Court

Recorder of Deeds

Register of Wills

also serves as Clerk

of Orphans Court

District Attorney

Sherriff

Coroner



President

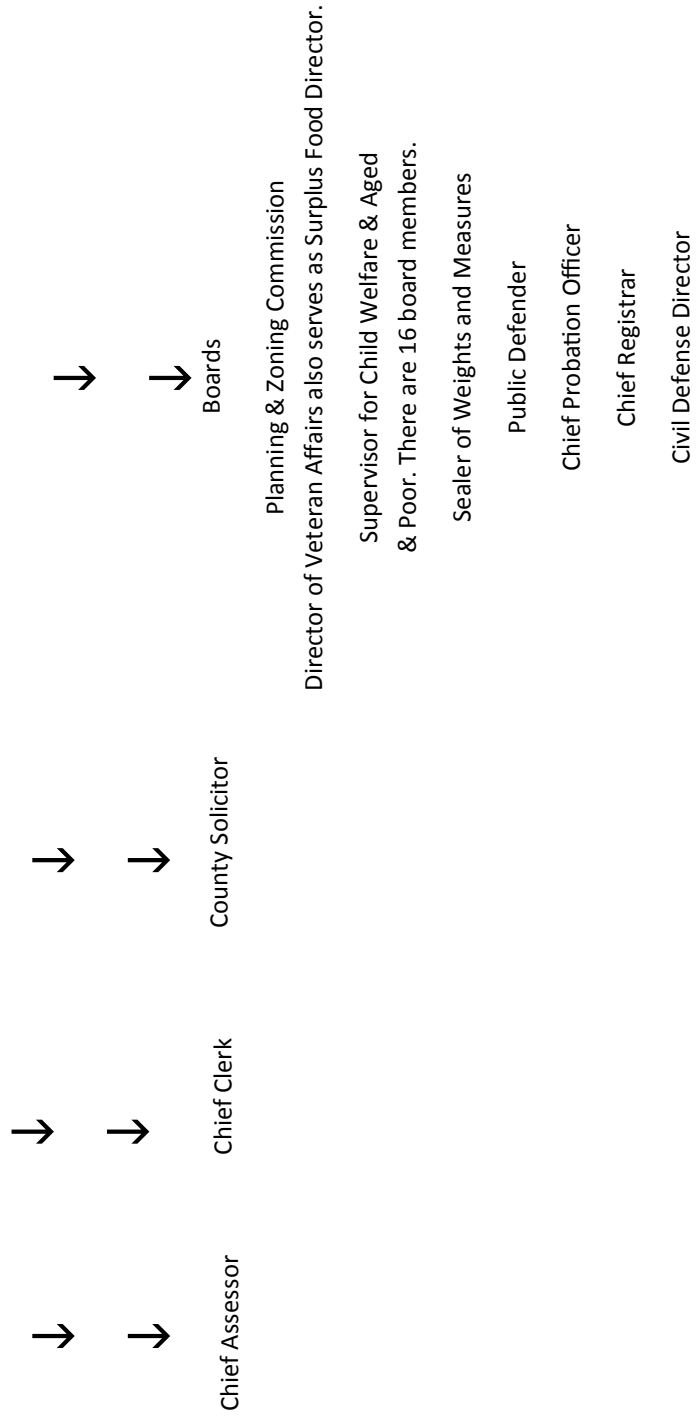
Judge

10-year term



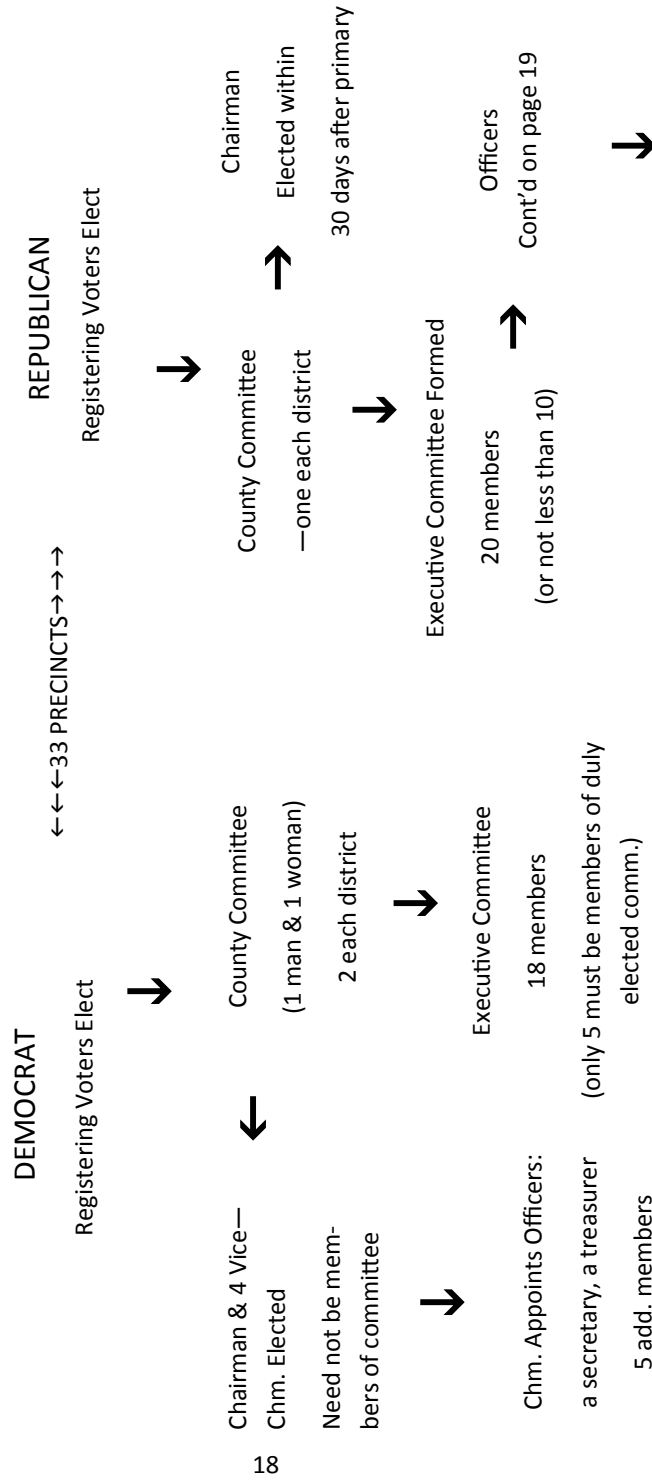
Cont'd from page 16

Warren County Commissioners



POPULAR CONTROL OF GOVERNMENT

WARREN COUNTY COMMITTEES



- Officers
- Chairman
- 2 Vice Chairman
- Secretary
- Treasurer
- Pres, Wrn City,
- Young Republicans
- Chrm. Repub. Women
- State Committeeman

Political Committees

In Pennsylvania the means of nominating candidates for public office is carried out by the political parties. The citizen's direct link with his political party is through his election district and his committeemen and if a Democrat, committeewoman who are elected every two years. County committees are concerned with the support and election of their selected candidates for public office. They are active in increasing registration, "getting out the vote," and conducting the election campaigns. It is required that they meet once in general session before both the primary and general elections. They select nominees to fill vacancies in larger political subdivisions such as the State. There is about a 10% turnover in both party committees every two years with members being elected from each of the County's 33 precincts.

Other County Services — cont'd

Warren General Hospital

A non-profit facility with 89 beds dedicated for acute care. It is a full-service hospital and all medical staff are board certified. It is administered by a board of directors.

Services include Behavioral Health, Cancer Care, Cosmetic Surgery, Dental Clinic, Detox, Diabetic & Nutrition, Emergency Care, Home Alert, Home Health Care, Hospice, Imaging Services, Laboratory, Maternity, Medical/Surgical Units, Mental Health, Orthopedics & Sports Medicine, Pain Management, Pastoral Care & Chaplain, Pharmacy, Rehab Works, Respiratory, Sleep Center, Surgical Services, Swing Bed Program, Urology, Walk In Care, Women's Health, and Wound Care.

Rouse Estates

Located near Youngsville, the Rouse Estates include The Rouse Suites, The Rouse Home, Rouse Children Center, and Bridge of Rouse.

The Suites @ Rouse is an assisted living facility. There are 66 apartments, some are double occupancy. Financial obligations are through private pay, social security, veterans benefits, or insurance.

The Rouse Children Center is a children's daycare facility. Financial obligations are through self-pay and subsidies.

Bridges of Rouse is an adult daycare facility located in Warren, Pa. A medical review is required to determine eligibility.

The Rouse Home is a skilled nursing facility which provides skilled nursing care for the aged and other adults. Residence must meet specific medical requirements to be admitted. Persons seeking admittance to the Rouse Home may apply directly to the Home. The Home accommodates 176 residents. Financial obligation is through Medical assistance, Medicare, Insurance, private pay, and veteran's benefits.

The Rouse Home provides total skilled nursing care for the long-term client as well as short-term rehabilitation as needed. The facility has an Alzheimer's Unit, a Behavioral Unit, in-patient Hospice Care, Occupational Therapy, Physical Therapy, and Podiatry services. Care is delivered to individuals based on their needs and wishes, rather than following an institutional schedule. The Facility consistently strives to maintain a culture of exceeding the expectations of the client, their families and their employees.

Warren State Hospital

This institution is a Psychiatric Hospital administered by a Chief Executive Officer CEO, who reports to the Department of Human Services, Office of Mental Health, and Substance Abuse Services.

Individuals admitted to Warren State Hospital must come directly from an inpatient hospitalization at a community hospital. Admission may be by voluntary commitment when recommended by the local mental health facility and the patient is in agreement. However the majority of admissions are through a civil court order. Admissions must be 18 years or older. (There is no Adolescent Care).

Referrals are accepted from the following 13 counties: Cameron, Clarion, Clearfield, Crawford, Elk, Erie, Forest, Jefferson, McKean, Mercer, Potter, Venango, and Warren.

Warren State Hospital offers a wide variety of treatment, rehabilitation and education programs. Individual programs and services are designed to meet identified needs, promote recovery, and return the individual to community living as quickly as possible.

Patient Programs and treatment services are divided into four broad categories; treatment services, psychosocial and vocational rehabilitation programs, educational programs, and social/recreational programs.

Patients care is provided by private insurance, Medicare, self pay, or by the Commonwealth. The length of hospitalization varies, however the average stay is four months. The hospital averages about 90 admissions per year. The bed capacity is 170.

Pre-admission inquiries are directed to the Social Service Department, which also receives new patients. Social Service continues to work with the patients and families during the hospitalization and assists in seeking placement and follow up services.

Don Mills Achievement Center

This early childhood learning center provides children 3 to 5 years old with a developmental appropriate curriculum in a socially supportive environment.

Speech Therapists who provide hearing, speech, and language screening assessments, and individualized therapeutic programs.

Camp Talk-A-Lot is a summer day camp offered for young children with speech, hearing, and learning challenges.

Rainbow Swim, with the cooperation of the YMCA and volunteers, provides a free recreational swimming program.

Financial Assistance offered on an individual, as needed basis, to assist in the purchasing of specific supplies and/or equipment required to meet the individual's needs.

Hospital, orthopedic, and other equipment is loaned, at no charge to the residents of our community.

Operation Take Me Home is an electronic tracking system to use if their loved one wanders away from home.

Wheel Chair Provision is provided at the Warren Mall and Public Library.

Warren County Assistance Office

The assistance office is under the Commonwealth of Pennsylvania, Department of Human Services. The Warren County Assistance Office is a valuable community resource dedicated to promoting and improving the quality of life for all Warren County residents. The agency provides a wide range of services including the determination of eligibility for:

Transitional Assistance for Needy Families, cash assistance may be available for those who do not earn enough money to support themselves or family or can not work because of disability. The four main programs are the 1) Temporary Assistance for Needy Families (TANF), 2) Diversion Program, 3) State Blind Program, and 4) Refugee Cash Program.

SNAP (known as Food Stamps: is the Supplemental Nutrition Assistance Program. These benefits are used to buy food. Eligible clients receive a Pennsylvania Electronic Benefits Transfer (EBT) ACCESS Card which is used to make food purchases at grocery stores and supermarkets.

Healthy PA: Includes Medical Assistance, also known as Medicaid or MA, pays for health care services for eligible individuals. CHIP the Children's Health Insurance Program provides health insurance to uninsured children and teens who are not eligible for or enrolled in MA. And the Healthy PA Private Coverage Option (PCO) for individual insurance. Low Income Energy Assistance Program (LIEAP) helps low income families pay their heating bills. The Warren County Assistance Office is located at 210 North Drive, Suite A, Warren, PA. Telephone number is 814-723-6330. (Toll Free 1-800-403-4043 and the website is www.compass.state.pa.us.

Beacon Light Behavioral Health Systems

Formerly known as the Children's Home of Bradford, Beacon Light Behavioral Health Systems was founded in the early 1900's to provide care to children abandoned or orphaned by the early oil and lumber industries. Throughout its history, the agency has provided quality care to thousands of young people. As the needs of our society have changed, Beacon Light Behavioral Health Systems has evolved into a private, not-for-profit, social service agency providing quality, professional, education and behavioral health services to young people. Beacon Light Behavioral Health Systems' continuum of care includes Emergency Shelter Placement, Forensic Mental Health Services, Residential Treatment (RTF), Education programs, Community Based programs, Outpatient Services, and long-term residential services for individuals with intellectual and developmental disabilities.

Beacon Light Behavioral Health Systems is accredited by the Joint Commission on Accreditation of Healthcare Organizations.

Fire Protection

City of Warren Fire Dept.

....17 Fire Fighters, paid by the city

Each Township is designated

an Emergency Management Coordinator

Bear Lake Fire Dept.

Clarendon Fire Dept.

Grand Valley Fire Dept.

Lander Fire Dept.

North Warren Fire Dept.

Pleasant Township Fire Dept.

Scandia Fire Dept.

Starbrick Fire Dept.

Tidioute Fire Dept.

Youngsville Fire Dept.

Pleasantville Fire Dept. (not Warren County)

Wrightsville Fire Dept. (not Warren County)

Warren County, Pennsylvania Townships

Brokenstraw Township — established 1800
Cherry Grove Township — established 1847
Columbus Township — established 1825
Conewango Township — established 1808
Deerfield Township — established 1821
Eldred Township — established 1843
Elk Township — established 1830
Farmington Township — established 1853
Freehold Township — established 1833
Glade Township — established 1844
Limestone Township — established 1829
Mead Township — established 1847
Pine Grove Township — established 1821
Pittsfield Township — established 1847
Pleasant Township — established 1834
Sheffield Township — established 1833
Spring Creek Township — established 1821
Southwest Township — established 1838
Sugar Grove Township — established 1821
Triumph Township — established 1878
Watson Township — established 1880