

# Box Score Report

WCHS vs Bismarck - Dec 19, 2020 - W 64-62

## Period Stats

Team	1	2	Final
<b>WCHS</b>	28	36	64
BHS	29	33	62

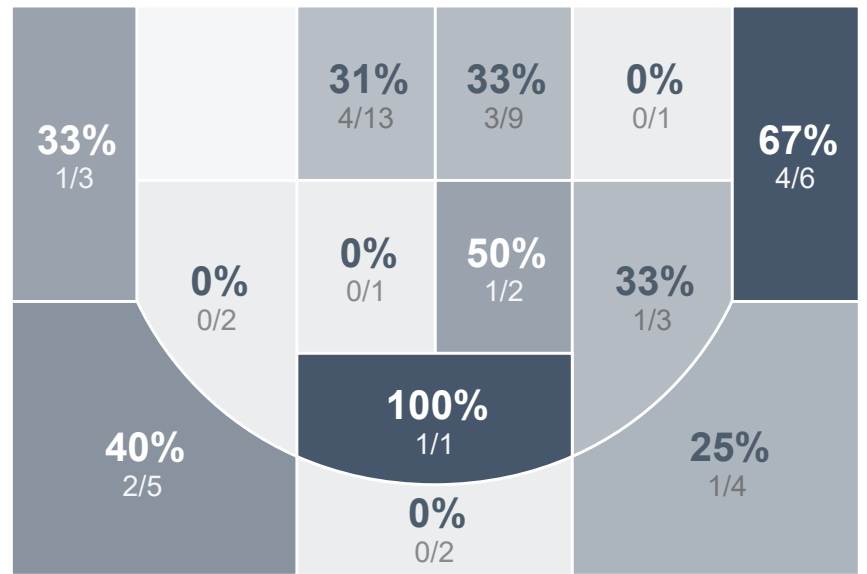
## Run Graph



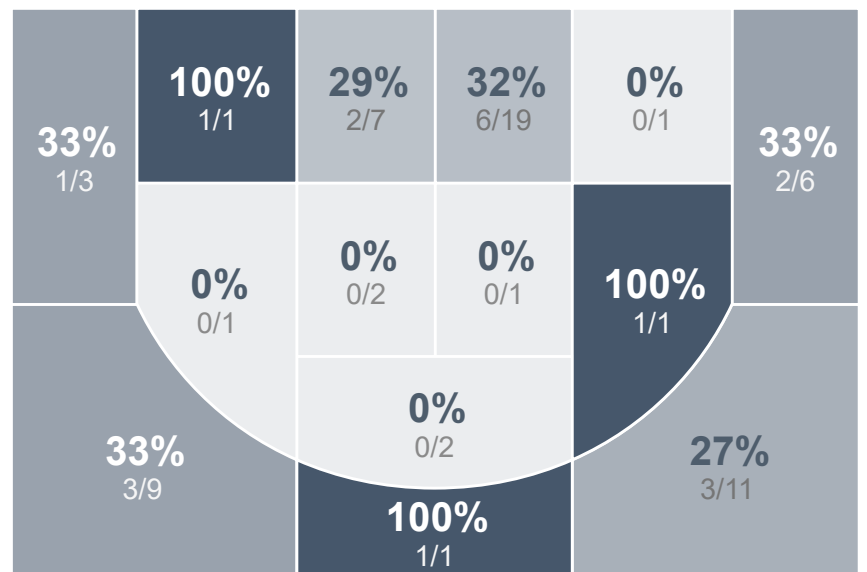
## Team Stats

	WCHS	BHS
Field Goal %	34.6%	30.8%
Effective Field Goal %	42.3%	38.5%
2FG Made/Attempted	10/32	10/35
2FG%	31.3%	28.6%
3FG Made/Attempted	8/20	10/30
3FG%	40.0%	33.3%
FT Made/Attempted	20/25	12/23
Free Throw Percentage	80.0%	52.2%
Points Per Possession	0.80	0.78
Transition Points	6	6
Points Off Turnovers	17	16
Second Chance Points	13	8
Points in the Paint	16	16
Offensive Rebounds	14	14
Defense Rebounds	36	23
Assists	17	16
Deflections	5	6
Steals	10	17
Blocks	4	0
Turnovers	30	18
Personal Fouls	18	23
Charges Taken	1	3

## Watford City Girls Basketball



## Bismarck High School



### Watford City Girls Basketball's Player Stats

Name	Pts	FG	3FG	FT	+/-	MINS	OREB	DREB	AST	DEFL	STL	BLK	TO	FOUL	CHG
#1 Hayley Ogle	2	0/5	0/3	2/2	+ 4	25	3	6	4	0	2	1	5	4	1
#5 Jessica Mogen	6	2/8	1/4	1/1	+ 2	31	0	4	3	1	2	0	6	1	0
#11 Gracen Breitbach	2	1/2	0/1	0/0	+ 1	23	0	2	1	0	1	0	2	2	0
#12 Emma Mogen	19	4/10	2/5	9/11	+ 6	36	2	11	3	2	3	2	10	1	0
#24 Ashley Holen	21	5/15	3/4	8/8	- 1	35	3	7	0	1	1	1	5	2	0
#40 Madison Spacher	12	5/11	2/3	0/3	+ 6	34	3	4	6	1	1	0	1	3	0
#50 Riley Faller	2	1/1	0/0	0/0	- 8	14	1	1	0	0	0	0	1	5	0

### Bismarck High School's Player Stats

Name	Pts	FG	3FG	FT	+/-	MINS	OREB	DREB	AST	DEFL	STL	BLK	TO	FOUL	CHG
#0 Katie Greff	0	0/1	0/0	0/0	+ 5	6	0	0	2	0	0	0	0	0	0
#2 Sydney Gerving	4	1/6	0/3	2/2	- 1	16	1	1	2	1	2	0	2	1	1
#3 Halle Wetsch	0	0/3	0/2	0/0	- 14	14	2	1	1	0	1	0	2	3	0
#5 Mandie Picard	6	1/7	0/1	4/4	- 3	24	0	2	1	1	1	0	3	5	2
#11 Miyah Holzworth	5	2/6	0/0	1/4	- 7	30	6	2	1	3	7	0	2	3	0
#12 Tiereney Monroe	5	2/3	1/1	0/0	+ 1	12	0	1	2	1	0	0	0	0	0
#20 Mia Hinsz	3	1/2	1/2	0/0	- 2	15	0	3	1	0	0	0	1	1	0
#22 Jilee Golus	3	1/8	1/6	0/0	- 5	24	2	2	1	0	1	0	6	2	0
#23 Payton Gerving	24	8/14	5/8	3/4	+ 5	24	1	2	2	0	1	0	0	4	0
#24 Peyton Neumiller	9	3/12	2/7	1/7	+ 9	21	0	4	3	0	2	0	1	3	0
#33 Ali Gulleeson	3	1/3	0/0	1/2	+ 2	12	1	1	0	0	2	0	1	1	0