



# Sketches...

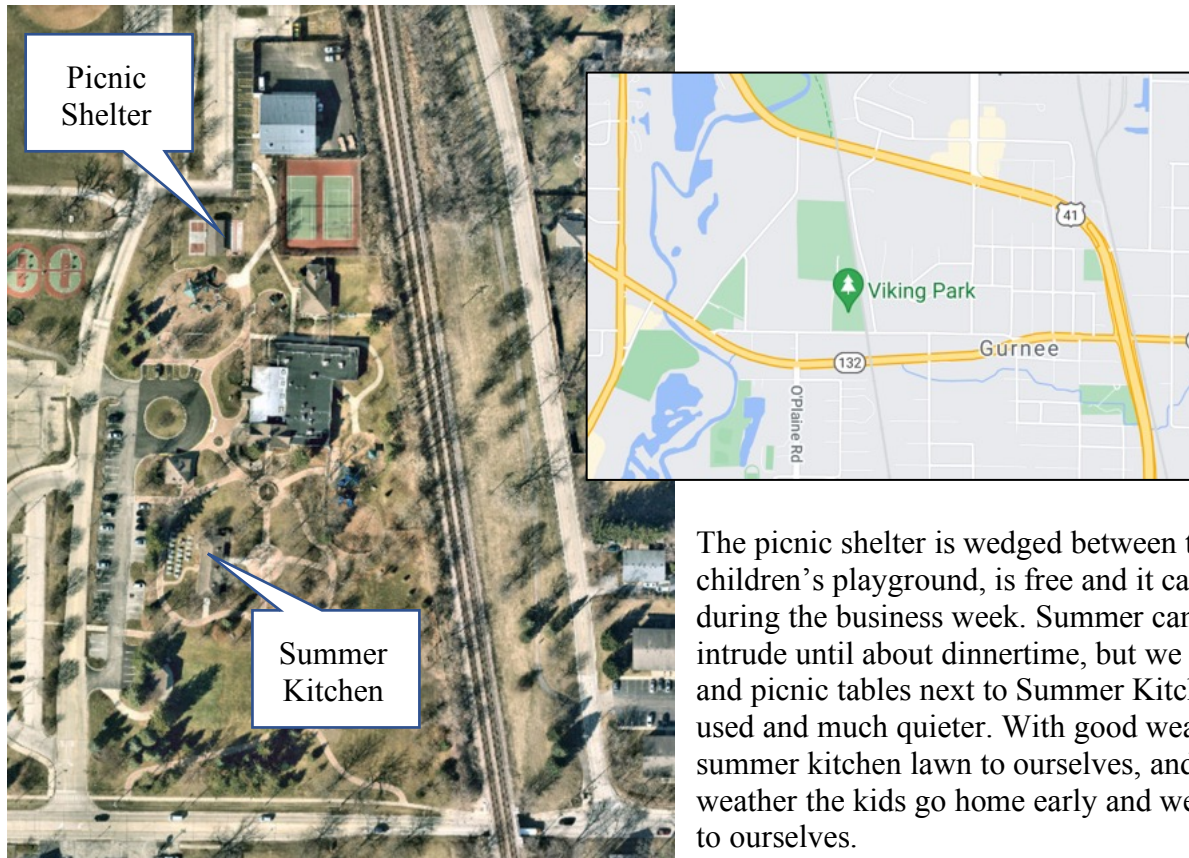
## Official Newsletter of your Lake County Art League

June 2021

Since 1934 LCAL.org 501c3

### Our rescheduled June 14 general meeting is at Viking Park, Gurnee

Our third-Monday June meeting has been moved forward one week to Monday, June 14 to quickly resolve everyone's needs for our June 25-July 16 show at the Starline Factory (see next article). Our June 14 meeting will be among picnic tables in Gurnee's Viking Park next to the Summer Kitchen, or under the park's 20x45-foot picnic shelter if it's a rainy evening. The GPS address for Viking Park is **4374 Old Grand Ave, Gurnee**. The park is open until sunset, which is 8:30, so we will meet from 6:30 to 8:30. Bring art to share, but bring your own food and drink.



The picnic shelter is wedged between tennis courts and a children's playground, is free and it cannot be reserved during the business week. Summer camp activities may intrude until about dinnertime, but we were told the lawn and picnic tables next to Summer Kitchen are seldom used and much quieter. With good weather we have the summer kitchen lawn to ourselves, and with poor weather the kids go home early and we have the shelter to ourselves.

Expect a discussion about the logistics of transporting and hanging the Starline Factory show, then bringing it all back after July 16. Expect discussion too about what kind of virtual and live show and meeting balance to expect in a post-pandemic world. With Zoom we have found a new and very effective format for our critiques, and also the power of having demonstrations done from anywhere in the US. Finally, expect a lot of renewed friendships long muzzled by pandemic isolation. We have missed each other. Expect a nod to the memory of Skip and Toni Wiese; we will forever miss them.

## LCAL June/July live show at Starline Factory in Harvard, IL

For the last decade Starline Factory has held a very popular Fourth Friday opening event for a pair of 3-week shows. A juried show is held as a first-floor exhibit of established and emerging regional artists, while a second floor becomes a Featured Artists Gallery. Open Starline artist studios and live music will be found on both floors, as well as a cash bar. A long-anticipated June 25 Fourth Friday kicks off the first pair of shows since the Covid-19 pandemic, and the Lake County Art League was invited to occupy the Featured Artists Gallery through July 16. This much was announced to our membership in a May 27 Save-The-Date notice. Broad details are below, and a timeline with final details will soon follow.

The Starline Factory facility is located in Harvard, IL, 40 minutes west of Antioch in IL 173. Our show committee will arrange for you to drop off your work in Antioch and perhaps elsewhere, and we will transport to and from Starline Factory. All work must be available to our show committee by June 16, **with no exceptions**. The show committee will also curate and hang the work with assistance from a Starline Fourth Friday representative. Physical hanging requirements will be similar to what we use at the Jack Benny Center.

To enter work in the show a member must go to the LCAL website ([www.lcal.org](http://www.lcal.org)) and click on a link that Phil Schorn added May 24. Fill in the information and upload a picture of your work. A photo of your work is optional but encouraged. In addition, there will be a button to click to print a standard "Hold Harmless Form" that you will need to sign and include with your artwork. Jeff Harold or Phil Schorn can help you with this if needed.

There are no entry fees or commissions, and Starline Factory will handle all sales during the Fourth Friday event. During the remainder of the show any purchase inquiries will be forwarded to LCAL for us to contact the artist. Sales tax will be collected by Starline during the Fourth Friday event, and after that Friday it'll be up to the artist to collect taxes on any sales.

**Contact Jeff Harold as soon as possible if you intend to be part of the show. Reach him at 847-838-9894 or [jeff@jeffharoldphotography.com](mailto:jeff@jeffharoldphotography.com). We need to know how many people are going to show so we can determine how many works from each artist we can hang. This could be anywhere between 1 and 3 works depending on how many artists participate. This is a large space, so we're looking at a potential 40 to 60 works depending on the size of each work.**

See Jeff's one-minute video tour of our second-floor space at [https://1drv.ms/v/s!ArDtwvqZrMflv2eqwxokOj5TNU\\_x?e=YThpXC](https://1drv.ms/v/s!ArDtwvqZrMflv2eqwxokOj5TNU_x?e=YThpXC). While it does not give a true sense of the density we can achieve with the modern Starline Factory hanging system, you can see the excellent lighting and the interesting restoration features of the old factory building. Notice the artist studios that open into this space and which will be an important part of the flow of the hundreds of curious visitors on June 25 and after. The video concludes with a view of a space we will use for a live demo during the opening.

See his video of the first-floor juried show space at <https://onedrive.live.com/?authkey=%21AIGk8ickcP4nWFY&cid=E5C7AC99FAC2EDB0&id=E5C7AC99FAC2EDB0%218168&parId=E5C7AC99FAC2EDB0%217656&o=OneUp>. Here the art will be hung in panels suspended from the ceiling, and a band will be stationed in the corner farthest from Jeff's camera.

## Membership dues are due

Membership dues are to be paid at or before our September general meeting. They are \$20 for a full-time student (12 hours minimum), \$35 for an individual and \$45 for a family. Make checks payable to the Lake County Art League. The attached Membership Form is an effective and convenient way to update our records of your contact information and volunteer interests.

Please take special note of those interests. We are constantly looking for help as we adapt to constraints and opportunities brought to us by the pandemic, and your identified interests can be a big help.

## Winners of the Spring Membership Show critique



Best of Show: "Leaves" by Phil Schorn



First Place: "Emmanuel-God with Us" by Mary Haas



Second Place: "Winifred" by Mary Neely



Honorable Mention:  
"Ann" by Carole Otis

Third Place: "Life In the Patch" by Jim Brooksher



Jeff Harold recorded the entire Spring Membership show critique by Sandie Bacon, and the link to it follows. Please contact him at 847-838-9894 or [jeff@jeffharoldphotography.com](mailto:jeff@jeffharoldphotography.com) if there are any issues reaching and watching this: <https://1drv.ms/v/s!ArDtwvqZrMflv1igP5S1rBdabxMC?e=1s4FG2>.

## August show at AFAF canceled

For a variety of reasons our planned post-pandemic show at an AFAF gallery in August had to be dropped. AFAF grabbed an opportunity to move to a promising new location close to downtown, but that morphed into a new schedule that conflicted with the invitation we had received from Starline Factory. We have been asked to consider a future show in Antioch, which we certainly will, but it will probably be a year away.

## And ....

The Lake County Art League year runs from September through June. In the past we have met on the third Monday of these months, 7-9:00 pm. Meetings in September, October, January, February, March, April and June included presentations, usually a demonstration. November and May meetings are the closing critiques for our popular fall and spring membership shows. Finally, we take a holiday break in December. Here are dates and times that should be on your horizon:

- **June General Meeting**, Monday June 14, 6:30-8:30 at Viking Park, Gurnee. This will be our last meeting of the 2020-2021 year.
- **September General Meeting and Demonstration**, Monday September 20, 7-9:00 pm at a location to be announced. This will be our first meeting of the 2021-2022 year.

### Elected Officers

President	Gail Gudgeon	gaile.gudgeon@gmail.com
Vice President	Mary Neely	mmbn@yahoo.com
Recording Sec	Jack Littlefield	thelittlefields@gmail.com
Corresponding Sec	Chris Tanner	chrisetanner@sbcglobal.net
Treasurer	Elizabeth Engle	betharoo30@aol.com

### Directors

Art Festivals	(vacant until festivals again become viable)	
Historian	Ali Albakri	nyika1940@gmail.com
Hospitality	Fran Issac	fmisaac@aol.com
	Sunny Parenteau	parenteausunny@gmail.com
Librarian	(vacant)	
Membership	Betty Perri	bettyaperri@gmail.com
	Leslie Nauta	nautateam@comcast.net
On-The-Wall	Chris Tanner	chrisetanner@sbcglobal.net
Programs	Debbie Kalinowski	artbydebbiek@gmail.com
Publicity	Tom Perkowitz	perkowitz@mac.com
Scholarships	Val Brandner	isketchit@yahoo.com
Sketches	Chris Tanner	chrisetanner@sbcglobal.net
Tours	Val Brandner	isketchit@yahoo.com
Visual Recording	Ali Albakri	nyika1940@gmail.com
Workshops	(vacant)	

### Connection to the Art Community

Social Media	Phil Schorn	phil@pschornstudio.com
Website	Phil Schorn	phil@pschornstudio.com
Legacy Art	Thom Kapheim	kapart1@sbcglobal.net
Plein Air	Chris Tanner	chrisetanner@sbcglobal.net
	Deb Edmunds	edmundsdl@gmail.com
Undercroft	Ali Albakri	nyika1940@gmail.com



Please complete this form and  
submit it with your payment

## Membership Form

2021-2022 Year

The membership year runs from the September general meeting to the September general meeting of the following year. Annual dues are to be paid at or before the September general meeting, and are \$20 for a full-time student (12 hours minimum), \$35 for an individual and \$45 for a family. New members joining after **March 1 2021** will pay half the annual dues.

Make your check payable to "Lake County Art League" and mail it to our Membership Chair person:

**Betty Perri 1720 Tall Pine Way, Libertyville IL 60048**

Questions? Contact Betty at 847-975-1730, or [bettyaperri@gmail.com](mailto:bettyaperri@gmail.com),  
or you can contact Leslie Nauta at 847-226-5958, or [nautateam@comcast.net](mailto:nautateam@comcast.net).

Payment: \$20 Student \$35 Individual \$45 Family

Name(s) \_\_\_\_\_

Street Address \_\_\_\_\_

City \_\_\_\_\_ State \_\_\_\_\_ Zip \_\_\_\_\_

Phone \_\_\_\_\_ E-mail\* \_\_\_\_\_

\*for correspondence, newsletters and notices

Art Medium \_\_\_\_\_ Renewing Member Returning Member New Member

LCAL Newsletter **Sketches**: Send e-mail edition only (preferred) Send printed edition

As a member of the Lake County Art League we look forward to your sharing your time and talent with us as we strive to share our experiences with you. Your active involvement in the many activities of the art league will help you grow as an artist and us grow as an organization. That involvement will also give you greater personal contact with your fellow members, including directors and elected officers. Please circle interests below that suit you and your sense of how to bring fine art to the people of Lake County.

- spring/fall membership shows
- help with art workshops
- help with tours
- help with plein air sessions
- help with social media
- help with website
- help with newsletter
- help with member news
- help with display of member art
- help with legacy art preservation
- help with Zoom hosting

Other special interest - tell us \_\_\_\_\_

**PLEASE SEE OUR WEBSITE AT [LCAL.ORG](http://LCAL.ORG)**