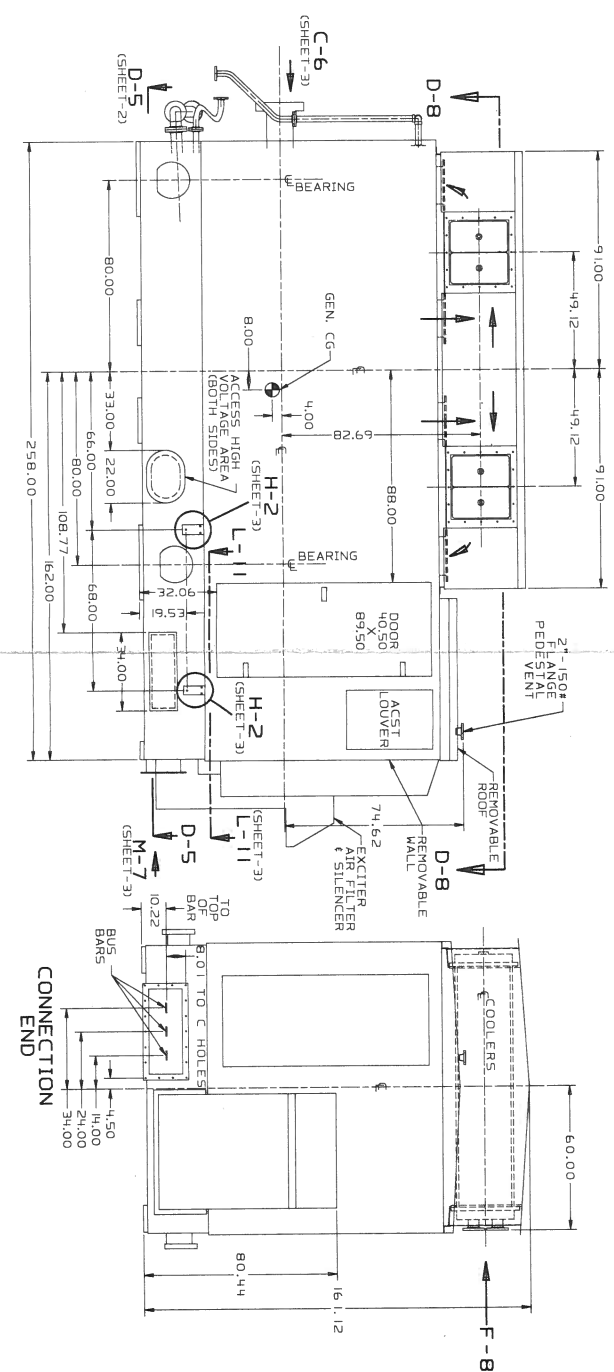
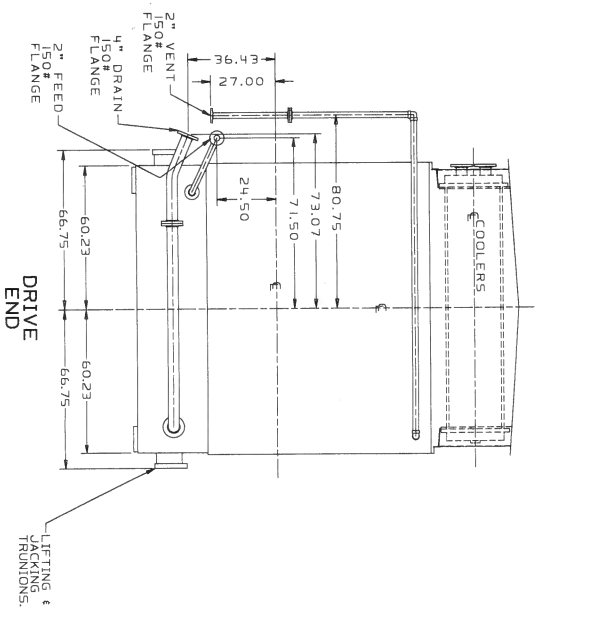
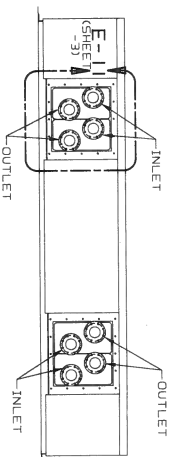
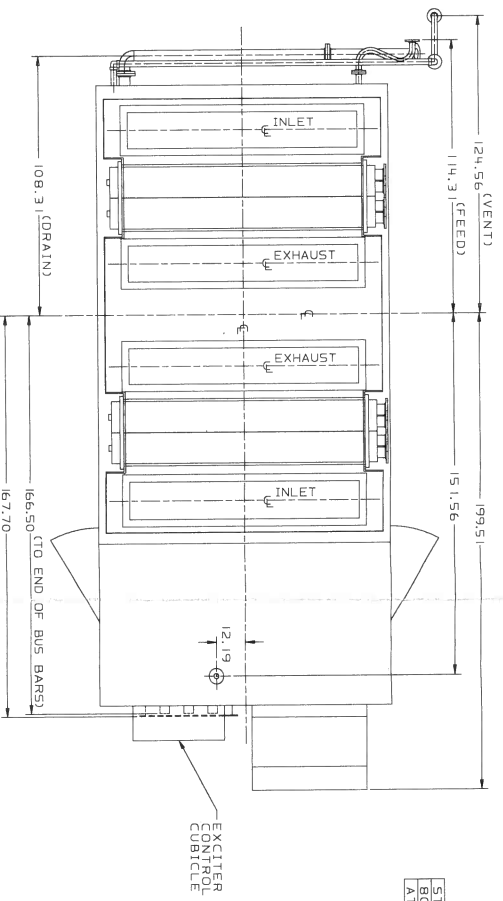
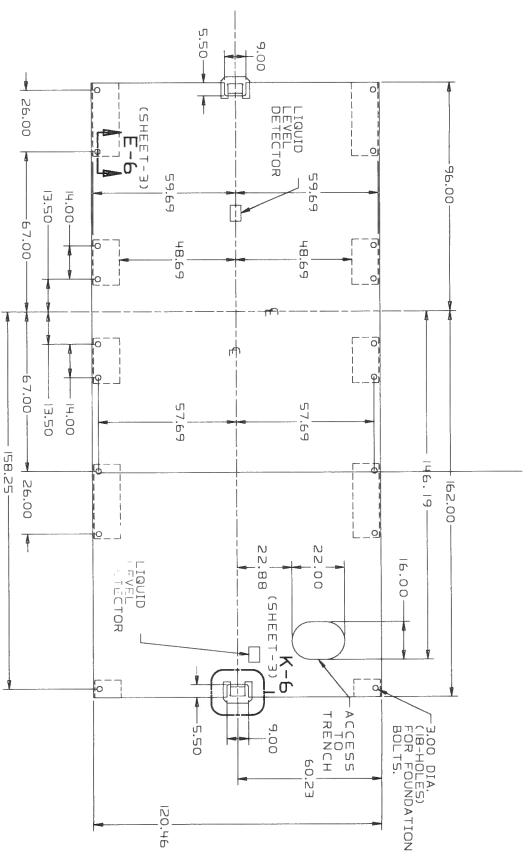


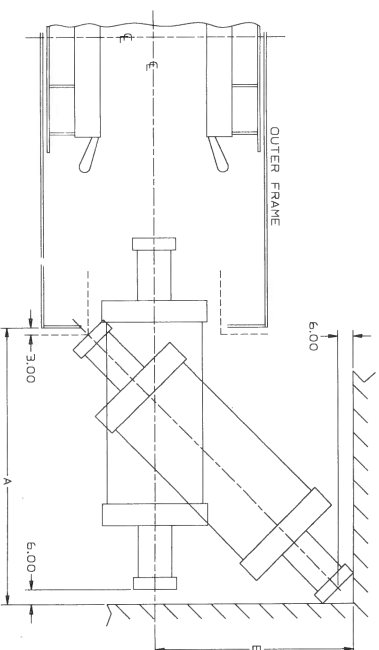
STERLING	DL # 316X804
80.0-38.000 X 70.00	6A3 TEMAC
ATB-2-40250KVA 3600RPM 13800 VOLTS	



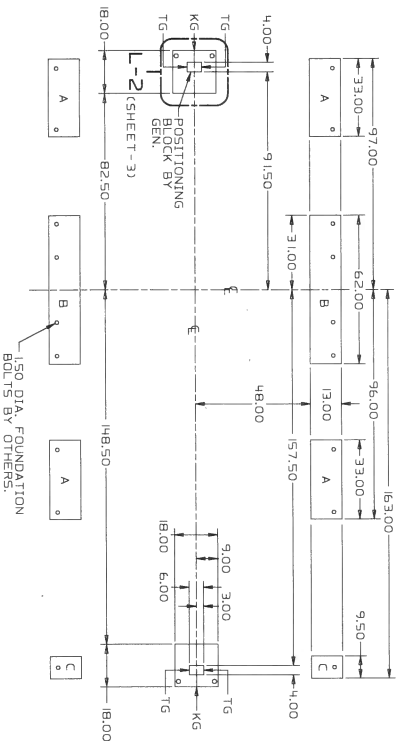
GENERATOR MECHANICAL OUTLINE
 DWG. 964E242, REV. A, SHT. 1



SECTION D-5 (L-6L-11)
(SHEET-1)



6A3 FOUNDATION PLATE REQUIREMENTS



GENERATOR FOUNDATION LOADING (X 1,000 LBS.)
D ARE IN THE VERTICAL DIRECTION EXCEPT THERMAL EXPANSION

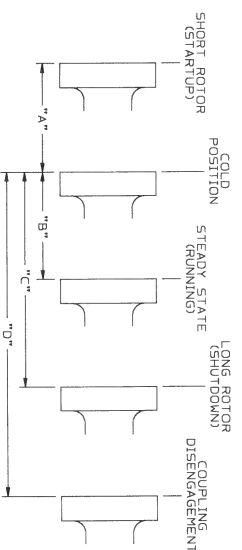
FOUNDATION PLATE	DEAD WEIGHT	NORMAL (VERTICAL)	THERMAL EXPANSION (VERTICAL)	FAULT ZONE I	FAULT ZONE II	FAULT ZONE III	FAULT ZONE IV	FAULT ZONE V	FAULT ZONE VI	FAULT ZONE VII	FAULT ZONE VIII
A	23	16	13.8	3.9	6.7	8.9	13.4	17.9	2.3	6	6.2
B	46	3.9	16.5	6.7	13.4	17.9	2.3	6	6.2	6.2	
C	8	20.4	7.8	6.8	15.6	33.5	51.4	2	2	2	
TG	-	10.1	10.1	2.2	3.2	3.2	3.2	3.2	3.2	3.2	

SEISMIC ACCELERATION ZONE IIA 0.15g HORIZONTAL, 0.1g VERTICAL
 ZONE IIB 0.2g HORIZONTAL, 0.1g VERTICAL
 ZONE IIC 0.3g HORIZONTAL, 0.2g VERTICAL
 ZONE IID 0.4g HORIZONTAL, 0.2g VERTICAL
 ZONE IVE 0.4g HORIZONTAL, 0.2g VERTICAL

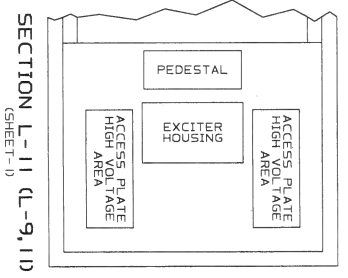
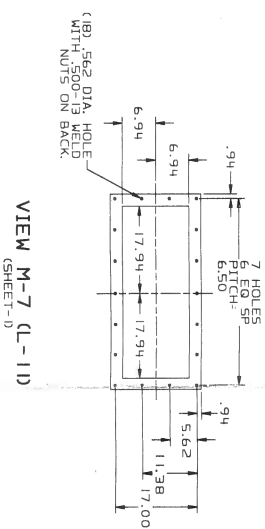
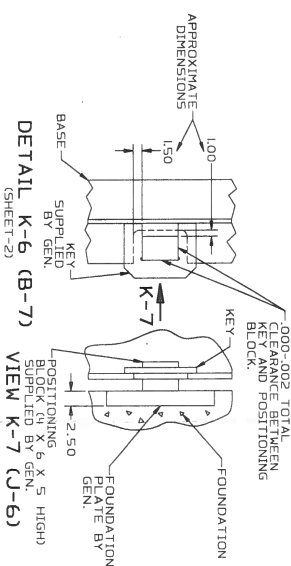
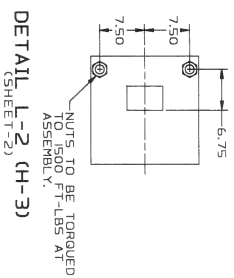
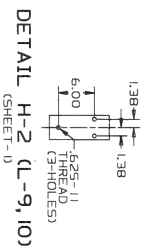
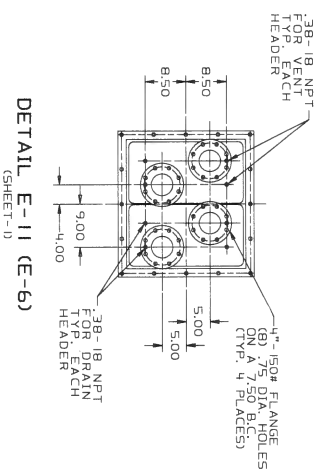
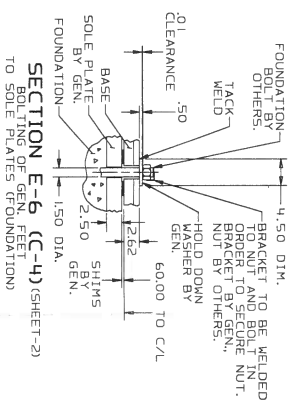
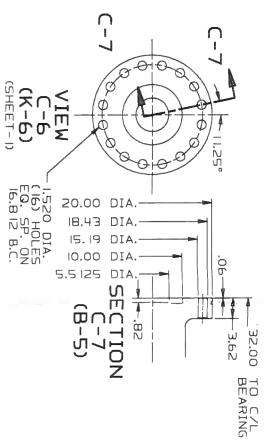
METHOD OF REMOVAL	HEIGHT	WIDTH
STRAIGHT PULL	14 FT 6.00	16 FT 6.00
STRAIGHT PULL PAST OUTER FRAME	20 FT 6.00	16 FT 6.00
HORIZONTAL CANTER PULL	16 FT 0.00	10 FT 6.00

DISTANCE REQUIRED TO REMOVE ROTOR
 OVERALL ROTOR LENGTH - APPROX. 19 FT.
 LARGEST DIAMETER OF ROTOR BODY - APPROX. 37.00"
 GENERATOR SIZE APPROXIMATE WEIGHTS

COMPONENT	SHIPPED WEIGHT
STATOR CORE	91,000
BASE FRAME & SHIELDS	39,000
ROTOR	75,000
EXCITER HOUSING	2,000
COOLER PACKAGE	8,000
TOTAL	200,000 LBS.

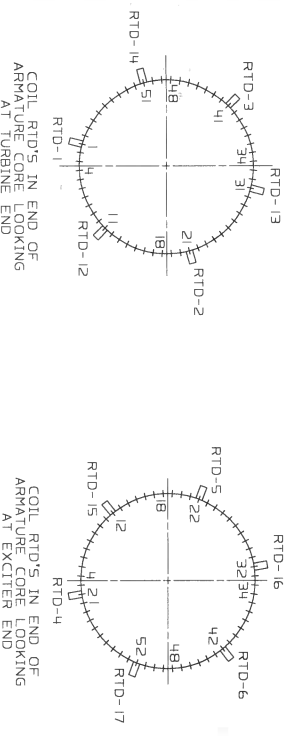


SYM	TURBINE COUPLING EXCURSION FROM COLD POSITION	DISCREPANCY	OVERALL
A	MAXIMUM TOWARD GENERATOR	0.53	0.53
B	STEADY STATE TOWARD GENERATOR	2.36	2.36
C	MAXIMUM TOWARD GENERATOR	2.36	2.36
D	MOVEMENT TO DISCONNECT FROM COUPLING TO CE BRG 1.750	1.750	1.750
E	MOVEMENT TO DISCONNECT FROM COUPLING TO CE BRG 1.750	1.750	1.750

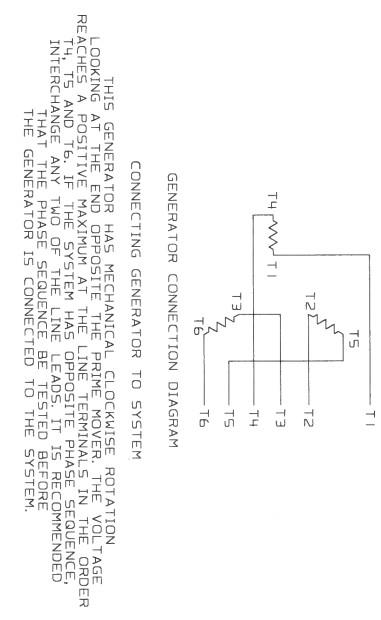
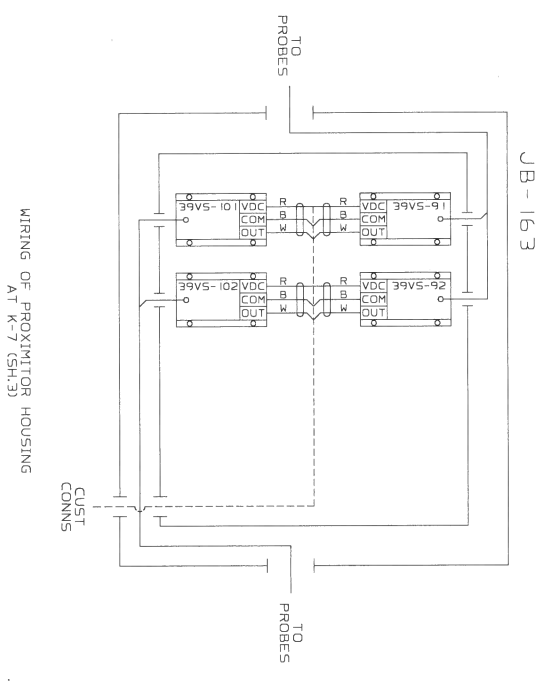


- NOTES:
1. DIMENSIONS IN BRACKETS (XXXX) ARE MILLIMETERS.
 2. ENCIRCLED PART NUMBERS ARE FOR GE INTERNAL USE.
 3. ALL JUNCTION BOXES TO BE LABELLED SHOWING JUNCTION BOX NUMBER AND VOLTAGE.
 4. TACK WELD MOUNTING PADS PER SPEC. PBB-AMT.
 5. USE CABLE TIES PART 90 AS NEEDED IN JB-54 AND JB-58.
 6. USE LEAD TAGS, PART 71 FOR RTD'S AND LEAD TAGS PART 70 FOR ALL OTHER DEVICES. USE SHRINKABLE LABEL WIRES AT EACH TERMINATION.
 7. GND LUG CONNECTORS: POST FOR B7D-814 (1.9-20.7) DIA. CABLE.
 8. FOR TERMINALS USE DRAWING NO. 1270J38.
 9. ALL CONDUIT TO BE LABELLED ACCORDING TO VOLTAGE LEVEL PER GAS TURBINE SPEC. TM-27.
 10. ANY WIRING PRACTICE NOT STATED ABOVE ON THIS DRAWING QUESTION SHOULD BE REFERRED TO THE NATIONAL ELECTRICAL CODE BOOK OR GAS TURBINE SPEC. TM-54 OR TM-55.
 11. ALL GROUNDING STRIPS ARE GROUNDED TO FRAME.
 12. ELECTRICAL CONTACTS ARE SHOWN IN NO ENERGY TO DEVICE CONDITION.
 13. GENERATOR MAIN GROUND CONNECTOR - BURNDY GA44-2N 1000 MCM OUTLUG

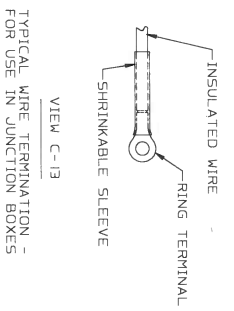
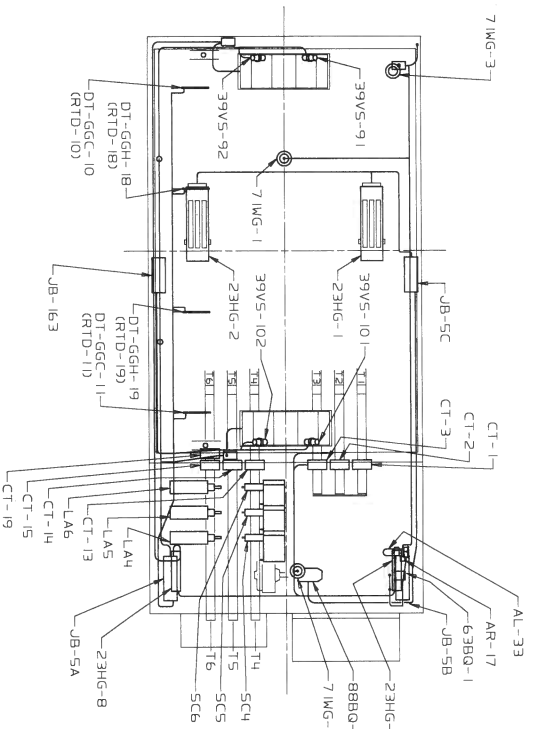
14. DEVICE IDENTIFICATIONS:
- 480 VAC 60 HZ 3 PHASE
 - 23HG-12 = GENERATOR HEATERS
 - BBBQ-1 = BEARING (EVACUATOR PUMP)
 - 120 VAC 60 HZ 1 PHASE
 - AL-73 = CABINET LIGHT
 - 23HG-78 = EXCITER END HEATERS
 - 125 VDC
 - 7IMG-1 = LIQUID LEVEL DETECTOR IN BASE UNDER GENERATOR
 - 7IMG-2 = LIQUID LEVEL DETECTOR IN BASE UNDER EXCITER END
 - 7IMG-3 = LIQUID LEVEL DETECTOR IN ROOF
 - 0-200 MW: LOW VOLTAGE
 - 39VS-9192 = TURBINE END BEARING
 - 39VS-10102 = EXCITER END BEARING
 - BT-GJ-1A118GJ2-1A118 - BEARING METAL RTD'S
 - RTD = RESISTANCE TEMPERATURE DETECTOR 100 OHMS PLATINUM
 - 63BQ-1 = GENERATOR BEARING LOW VACUUM ALARM
- PROTECTION EQUIPMENT
- SC = SURGE CAPACITORS 4.546 : .25 MF/138 KV
 - LA = LIGHTNING ARRESTORS 4.546 : 15 KV
 - CT = CURRENT TRANSFORMERS
 - CT-13, 14, 15
 - CT-19



RTD NO.	TEMPERATURE NOMENCLATURE	PHASE LOCATION	LOCATION
1	DT-GSF-1	1-4	STATOR TURB WINDING END
2	DT-GSF-2	2-5	STATOR TURB WINDING END
3	DT-GSF-3	3-6	STATOR EXCIT WINDING END
4	DT-GSA-4	1-4	STATOR EXCIT WINDING END
5	DT-GSA-5	2-5	STATOR EXCIT WINDING END
6	DT-GSA-6	3-6	STATOR EXCIT WINDING END
10	DT-GGC-10		TURB END-COLD EXCIT
11	DT-GGC-11		TURB END-COLD EXCIT
12	DT-GSF-12	3-6	STATOR TURB WINDING END
13	DT-GSF-13	1-4	STATOR TURB WINDING END
14	DT-GSF-14	2-5	STATOR TURB WINDING END
15	DT-GSA-15	3-6	STATOR EXCIT WINDING END
16	DT-GSA-16	1-4	STATOR EXCIT WINDING END
17	DT-GSA-17	2-5	STATOR EXCIT WINDING END
18	DT-GGH-18		FRAME - HOT AIR
19	DT-GGH-19		FRAME - HOT AIR



GENERATOR ELECTRICAL CONNECTION OUTLINE
 DWG. 963E978, REV. A, SHT. 2



VIEW C-13
TYPICAL WIRE TERMINATION -
FOR USE IN JUNCTION BOXES

