

Hot Air Balloon Santa

CBK Needlepoint Collection

Stitch Guide

Emily Garcia ● “Hot Air Balloon Santa” ● ESG-PL 03



Hot Air Balloon Santa

Background: Floss Overdyed #11141– 3ply
T Stitch

Border: Vineyard Silk
C-111
C-108
Reverse Scotch

Bow-Ribbon: Neon Rays
N21
N02
N26

Balloon– White Sections: Silk Splendor C802-4ply
Diagonal Mosaic

Balloon– Red Sections: Silk Splendor S1144-4ply
Diagonal Cashmere

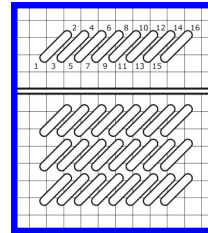
Balloon Basket: Splendor– Slanted Gobelin
S-802– 4ply
S1144– 4ply
C-008– 1ply

Santa: Velvet- Basket Weave
V612
V666

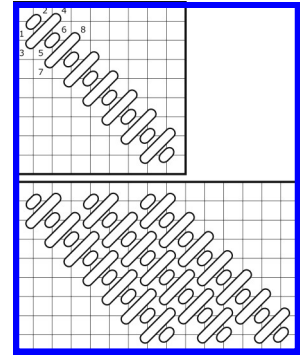
Beard: Fuzzy Stuff– Interlocking Gobelin

Tree: Fuzzy Stuff–
Dk. Green-Basket Weave
Bright Green– Long Slanted

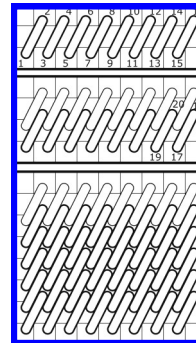
Border Lines: Vineyard Silk– Basket Weave
C-105
C-146
C-111
C-008



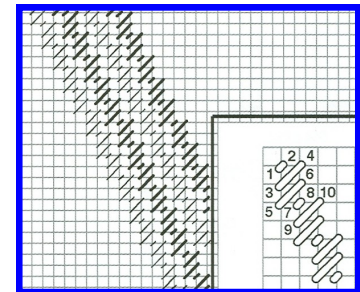
Slanted
Gobelin



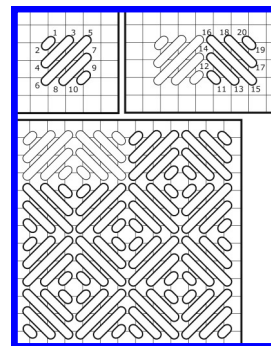
Diagonal Mosaic



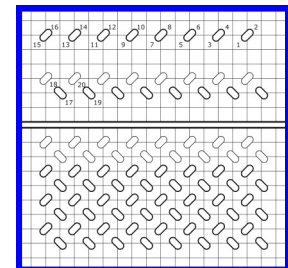
Interlocking
Slanted
Gobelin



Diagonal Cashmere



Reverse Scotch



T Stitch

Please do not feel constrained by the stitches or fibers used.

Use scraps when possible for the smaller areas and/or use your favorites when possible. This stitch guide is only one person's suggestion. There is no right or wrong way to stitch your canvas.