

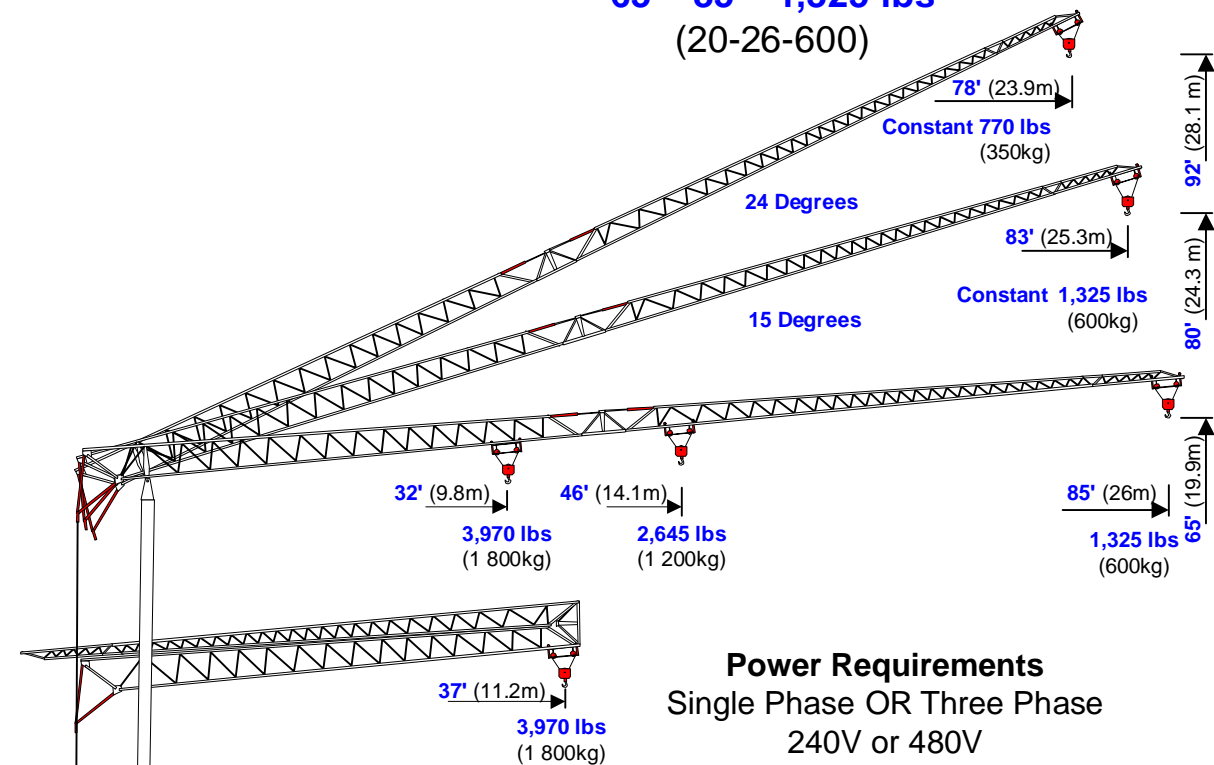
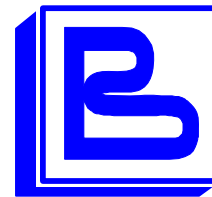


benazzato

Self-Erecting Crane 1385 (205-S)

Side Block Version

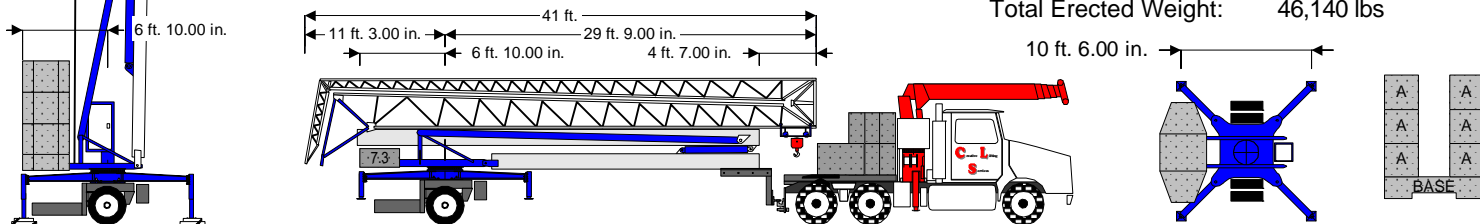
65' - 85' - 1,325 lbs
(20-26-600)



Power Requirements Single Phase OR Three Phase 240V or 480V

Crane Weight: 15,000 lbs
Base Ballast X 1 7,280 lbs
Axle & Hitch 4,000 lbs
Total Towed Weight: 26,280 lbs

Base Ballast Block: X 1 7,280 lbs
A Ballast Blocks: X 6 3,310 lbs
Total Ballast: 27,140 lbs
Crane Weight: 15,000 lbs
Axles & Hitch: 4,000 lbs
Total Erected Weight: 46,140 lbs



Electric, Hydraulic Or Air Brakes. Goose Neck, 5th Wheel Or Pintle Hitch

Hook	ft.	32	39	43	46	56	62	69	75	79	85
Radius	meters	9.8	12.0	13.0	14.1	17.0	19.0	21.0	23.0	24.0	26.0
Maximum	lbs.	3,969	3,171	2,900	2,646	2,139	1,874	1,687	1,521	1,455	1,323
Capacities	tonnes	1.80	1.44	1.32	1.20	0.97	0.85	0.77	0.69	0.66	0.60