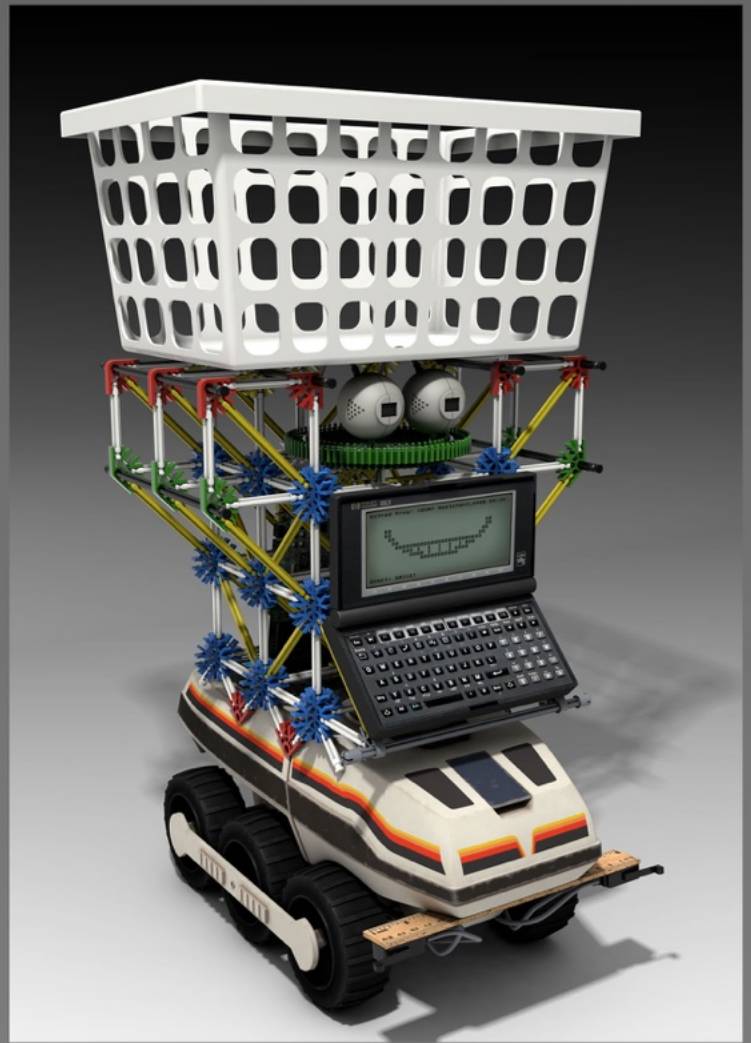
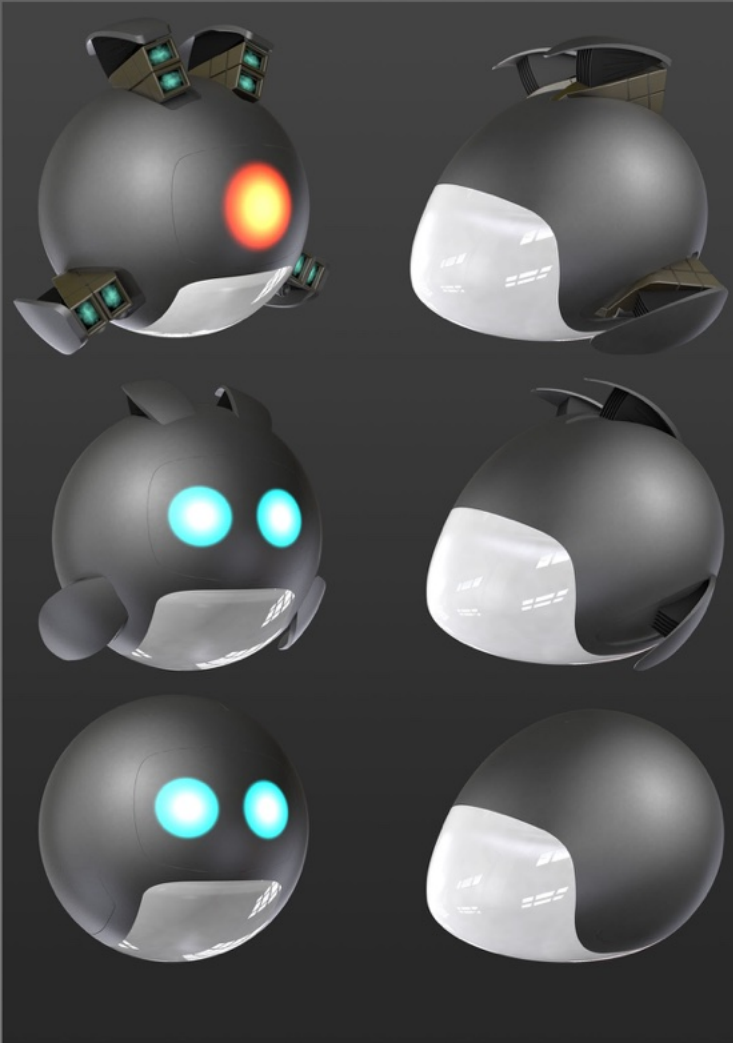


# THE LAST BUS



## KIN-CHIP WAND PACK



# HIS DARK MATERIALS

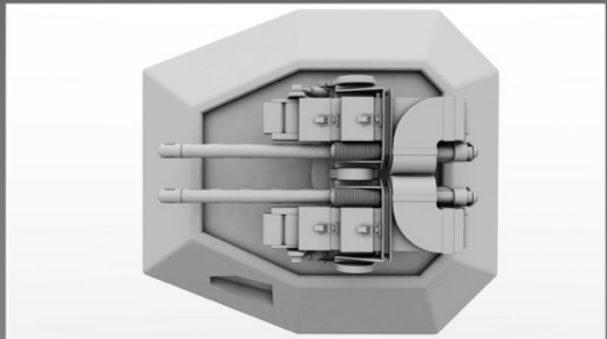
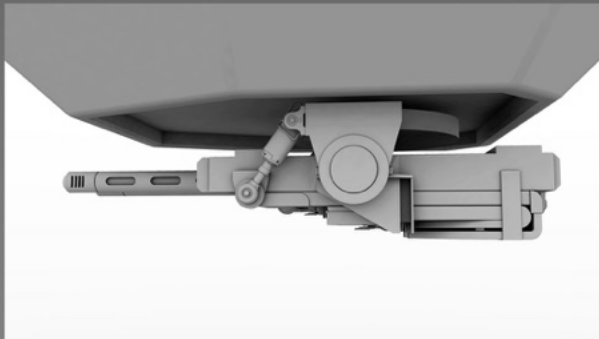
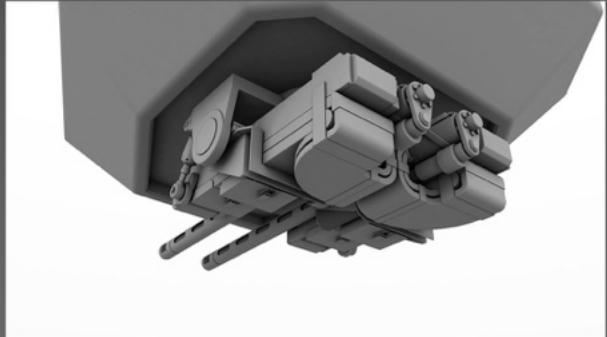
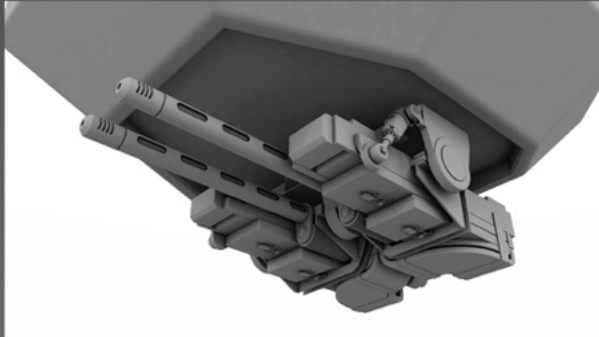
## SEASON 3



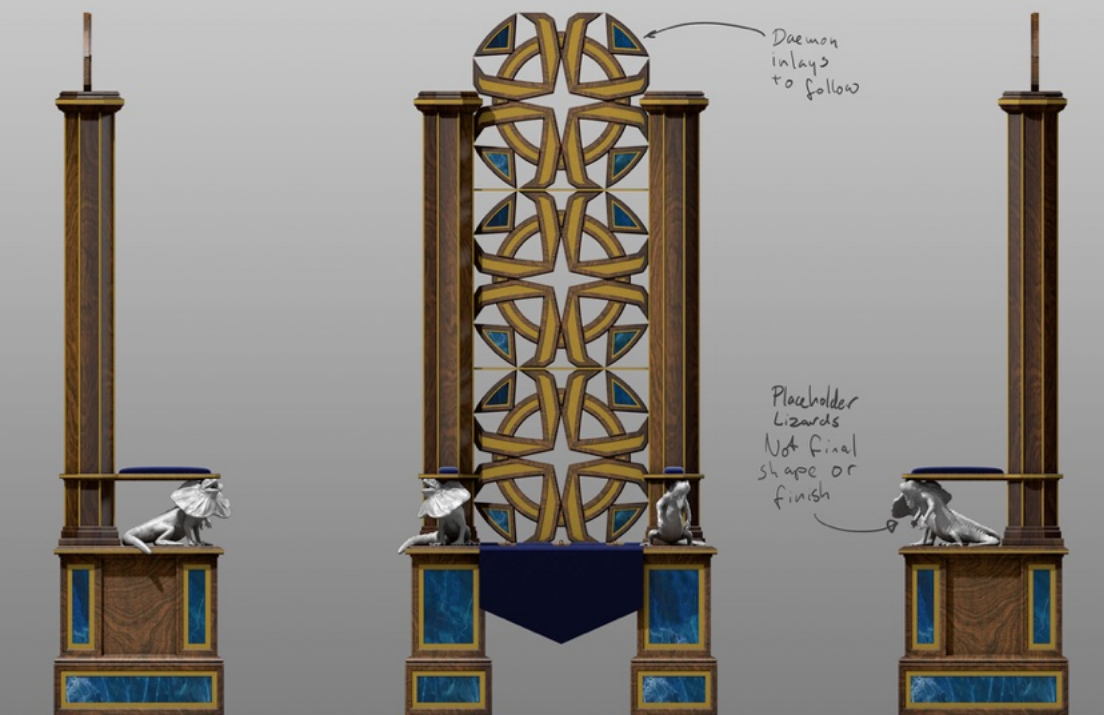


# HIS DARK MATERIALS

## SEASON 3



INTENTIONCRAFT MOUNTED RAIL GUN PACK



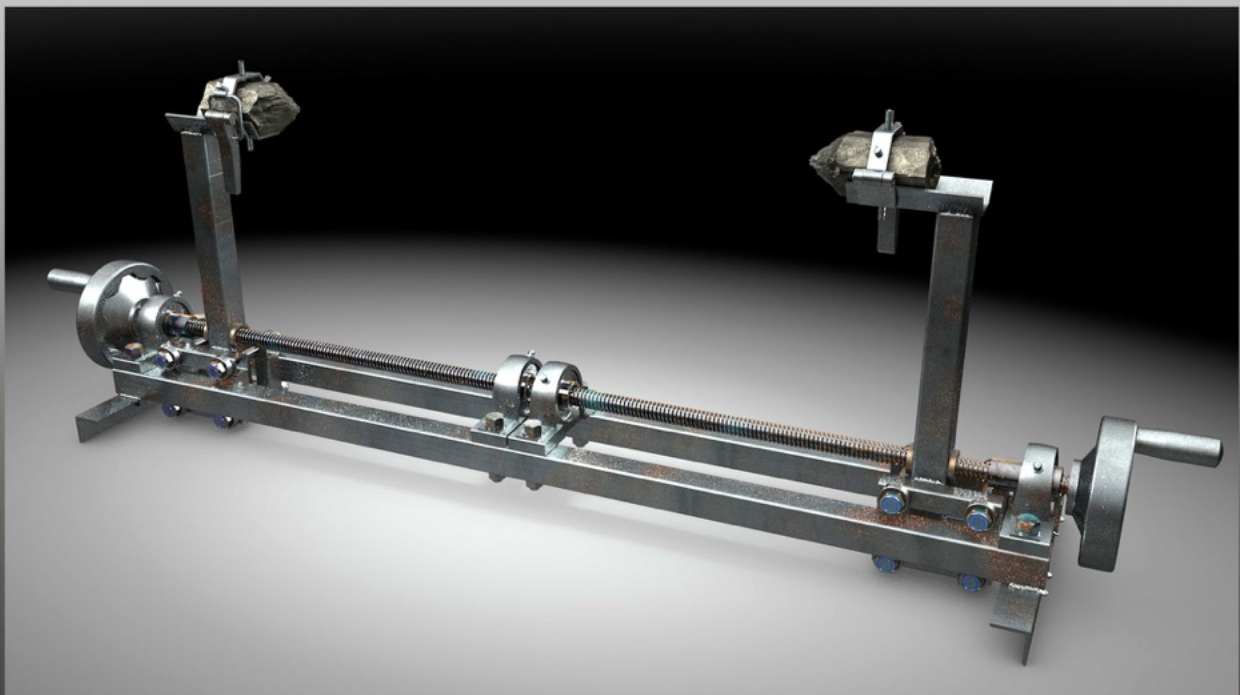
MÄGISTERIVM · THRONE

# HIS DARK MATERIALS

## SEASON 3



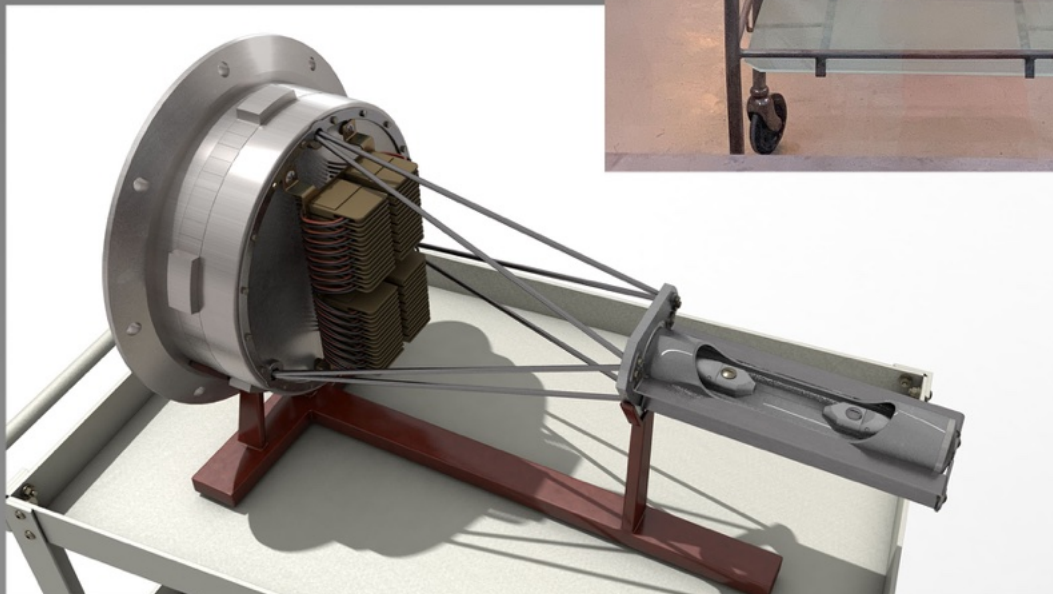
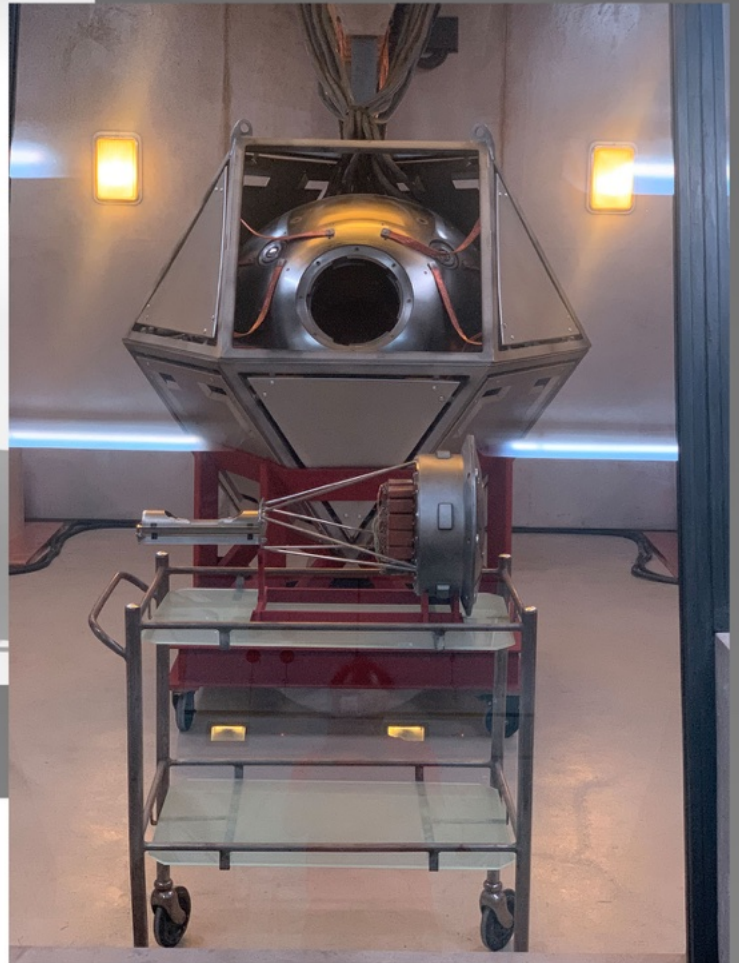
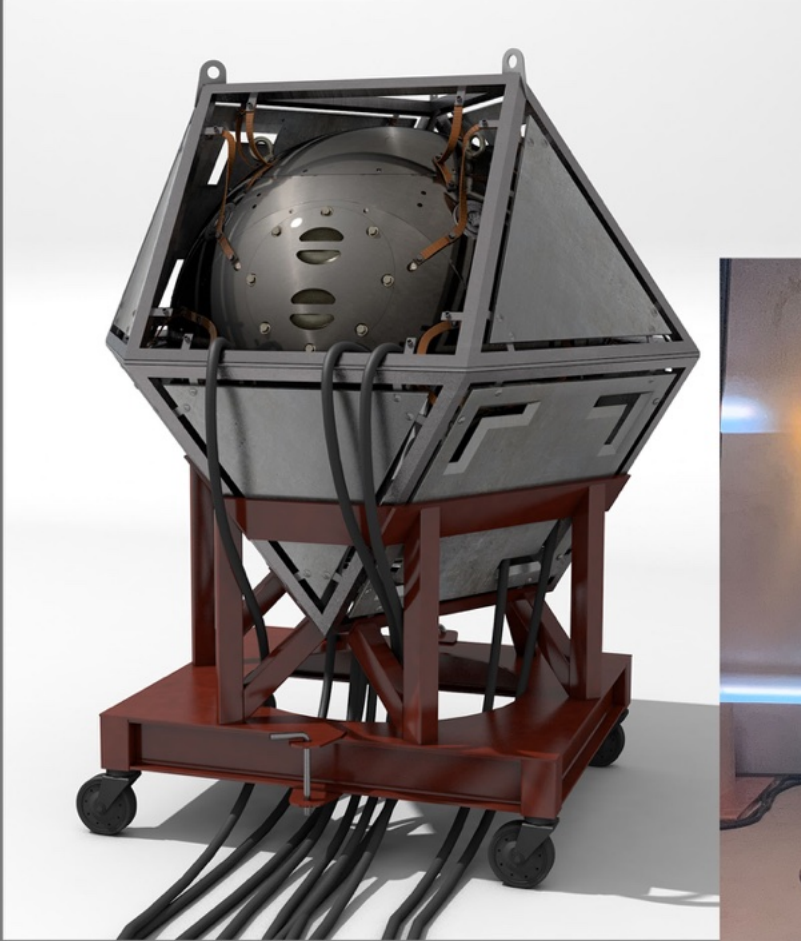
ASRIEL RAIL RIFLE



ASRIEL'S LODESTONE RESONATOR, ADJUSTABLE FRAME, 1m ROD LENGTH  
INDUSTRIAL HANDLES

# HIS DARK MATERIALS

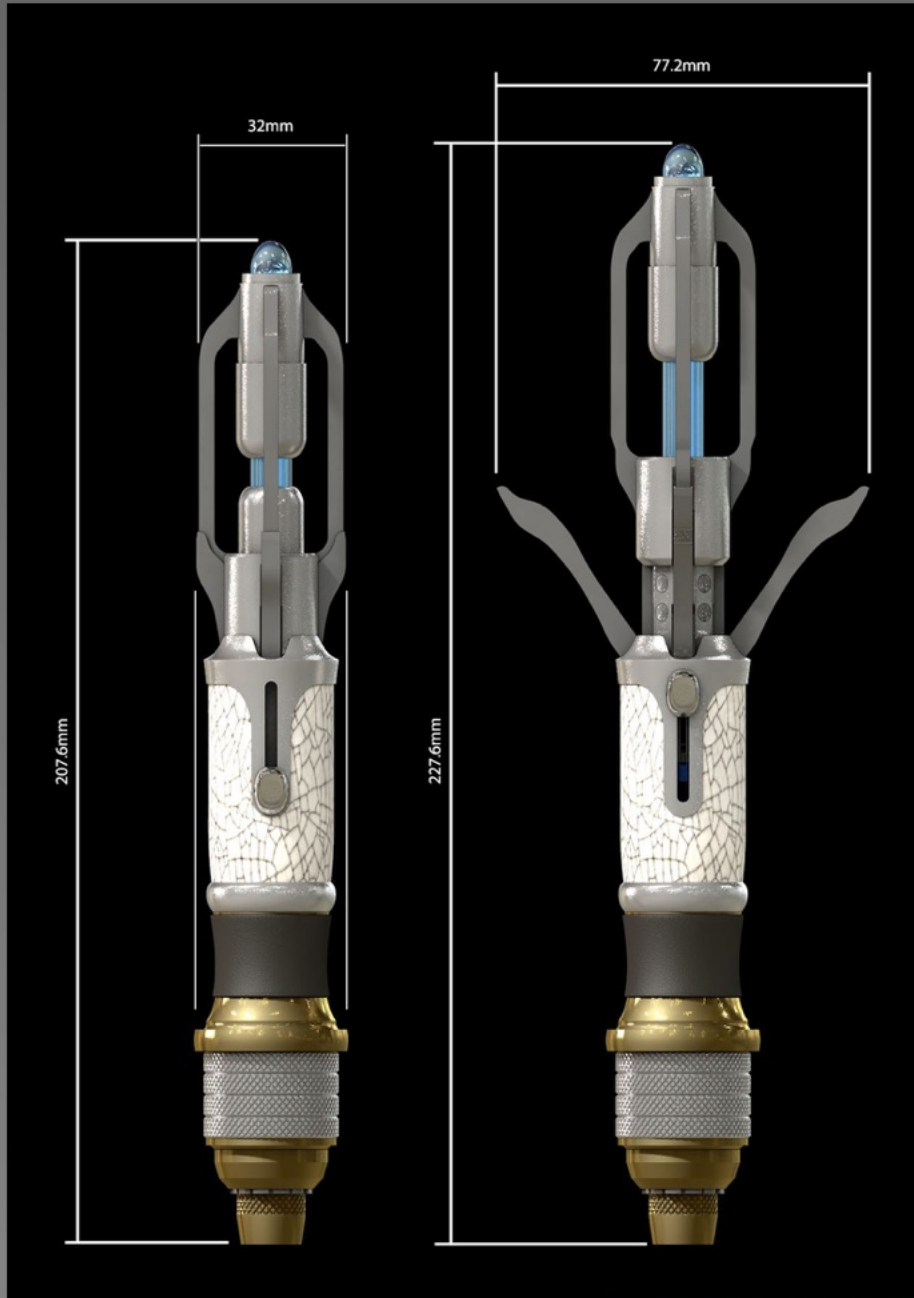
## SEASON 3





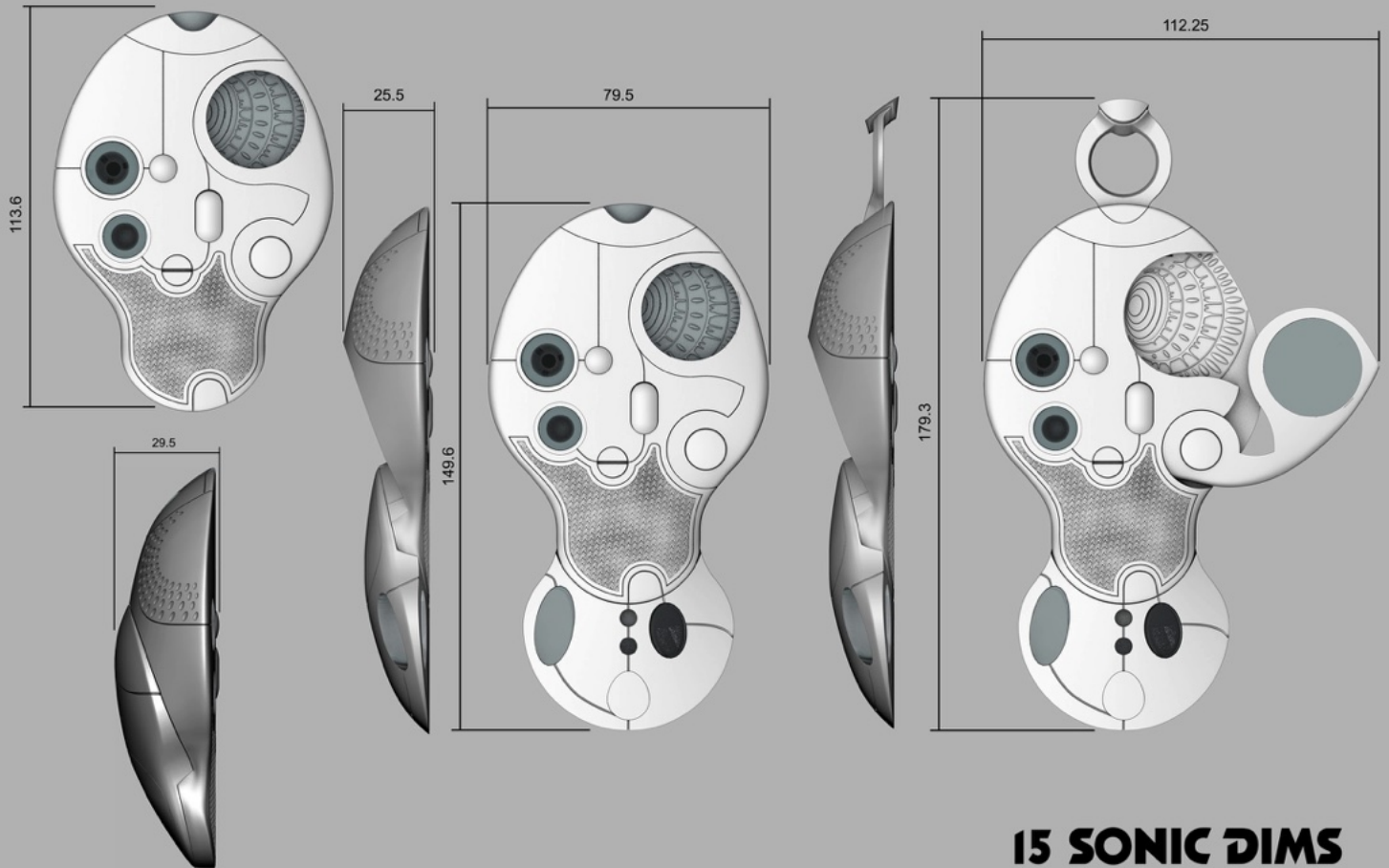
# DOCTOR WHO

## 60th SPECIALS & XMAS '23



# DOCTOR WHO

## 60th SPECIALS & XMAS '23



**15 SONIC DIMMS**  
SCALE 1:1 on A3





# DOCTOR WHO

## 60th SPECIALS & XMAS '23

CLOSED



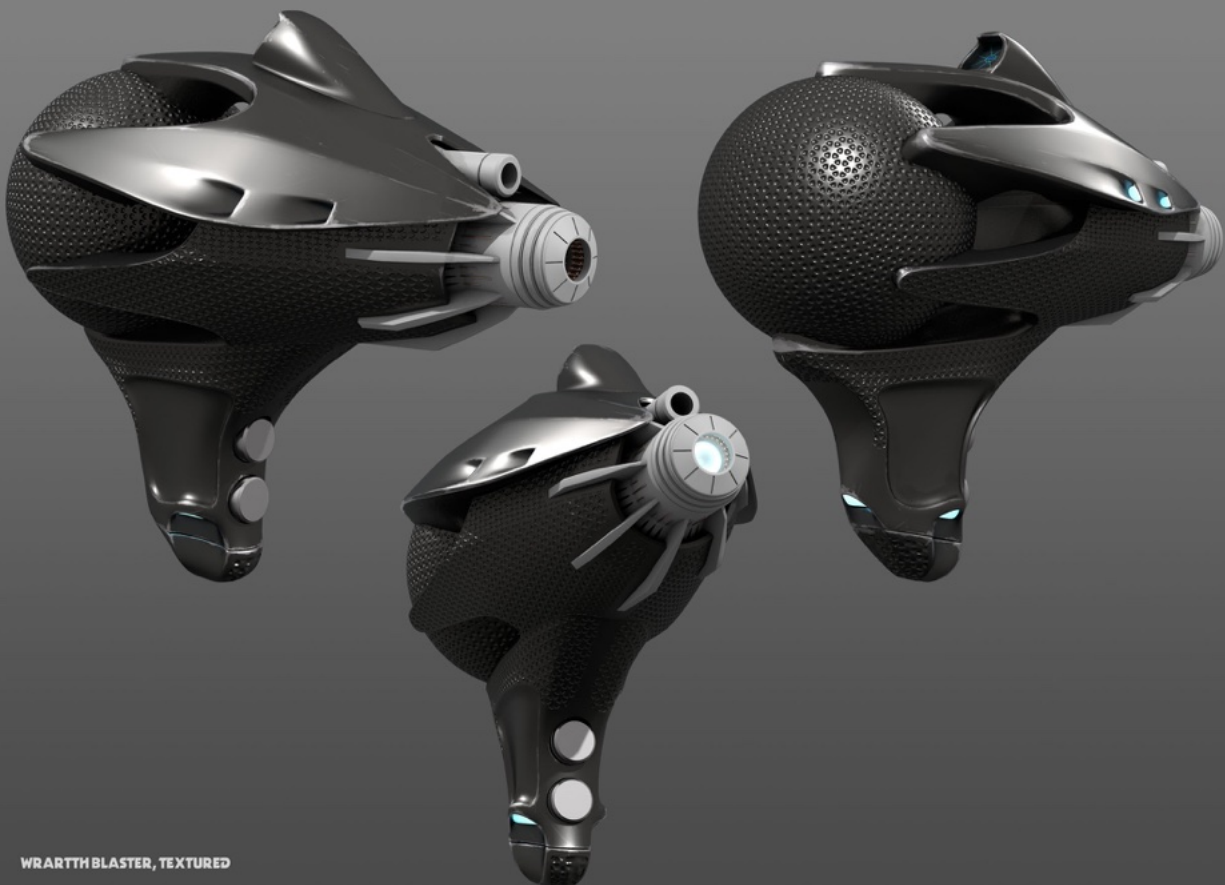
OPEN

18mm ROCKETS  
APPEAR FROM  
HORIZONTAL  
TUBES



DART LAUNCHERS  
SWIVEL OUT OF  
VERTICAL TUBES

Wheelchair Armament



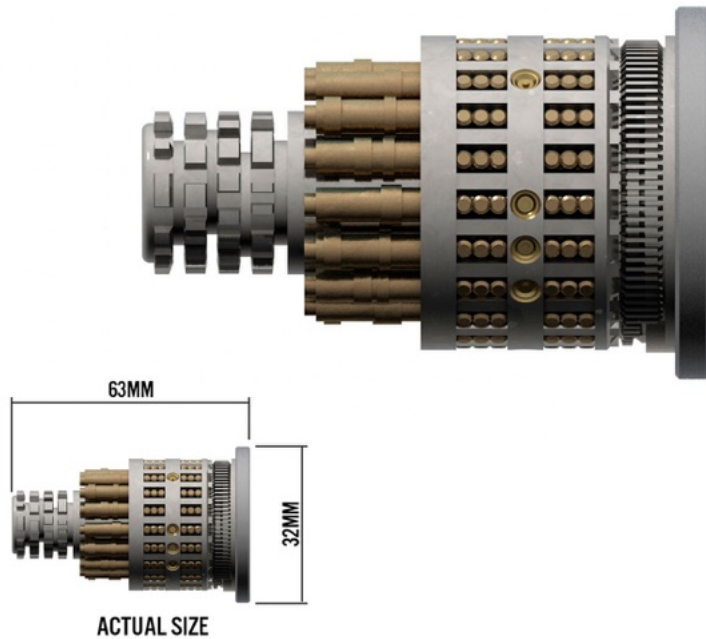
WRARTH BLASTER, TEXTURED



# DOCTOR WHO

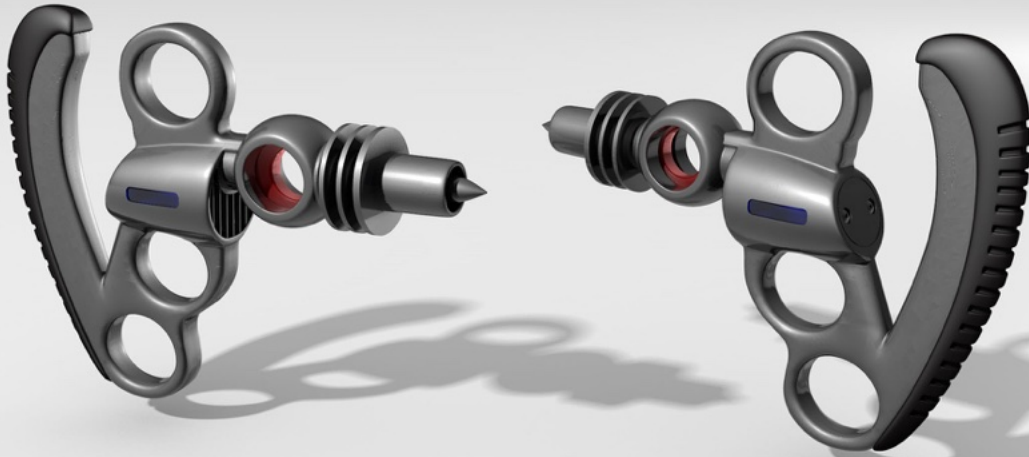
## 60th SPECIALS & XMAS '23

### TARDIS DOOR LOCK BARREL

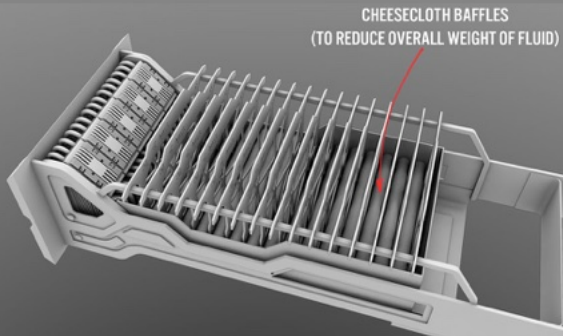
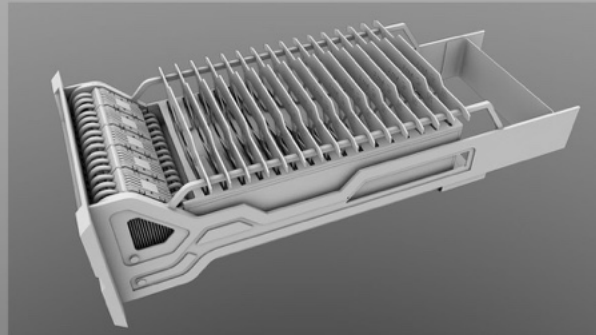
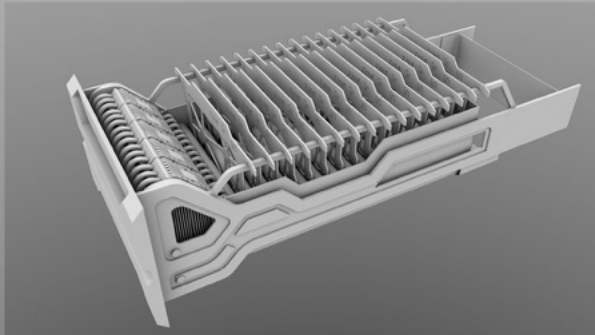


# DOCTOR WHO

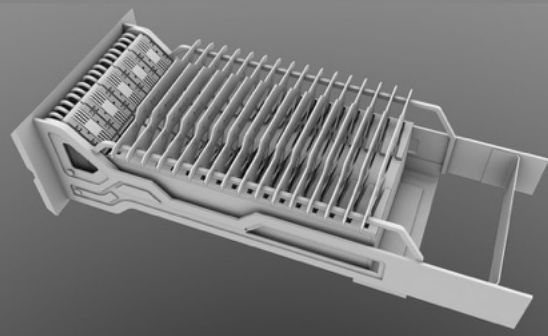
## 60th SPECIALS & XMAS '23



**MEEP BLASTER**  
First pass



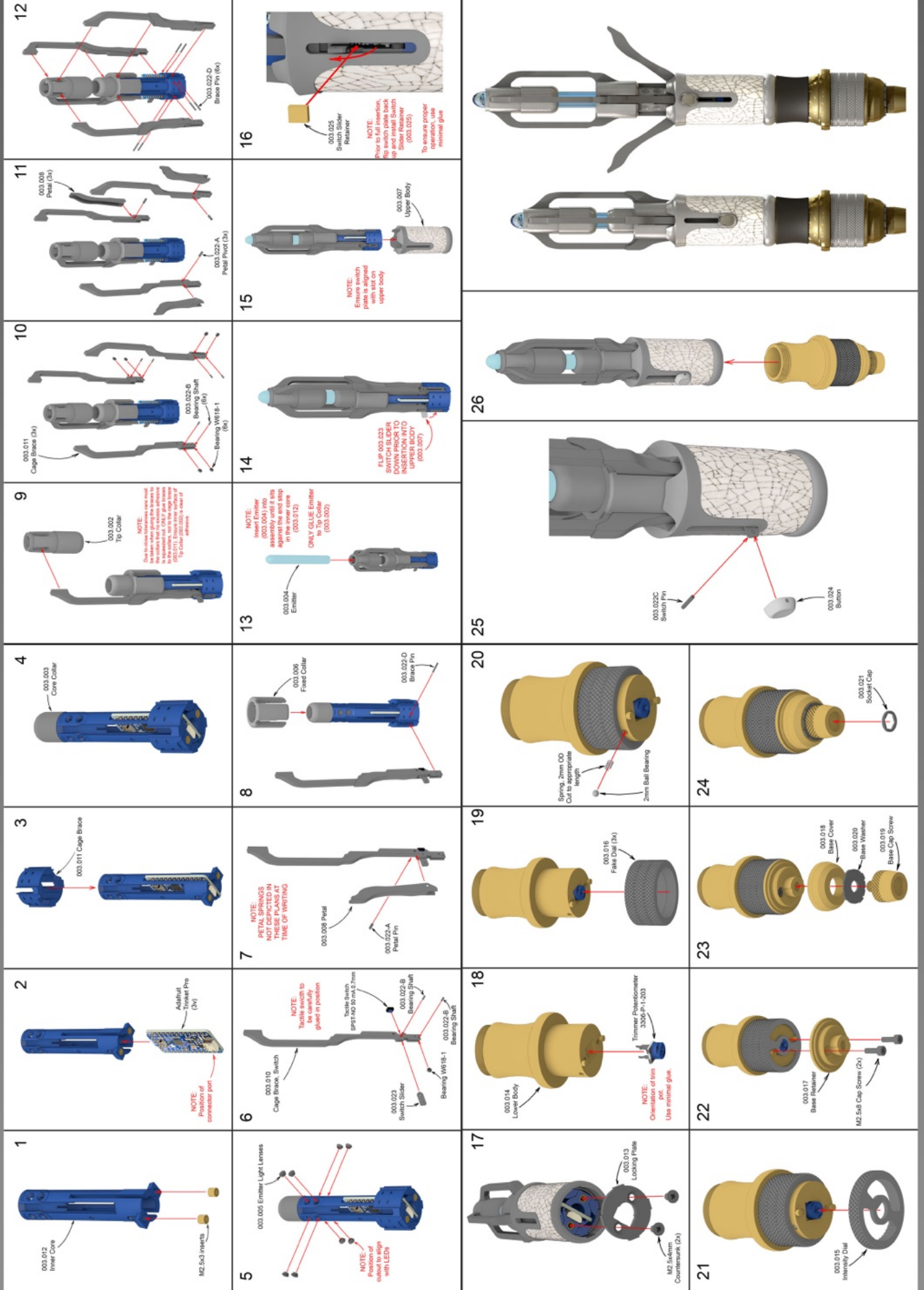
**TOP DRAWER  
(GOOPY DRAWER)**  
PLATES ARE REMOVED FROM HERE.



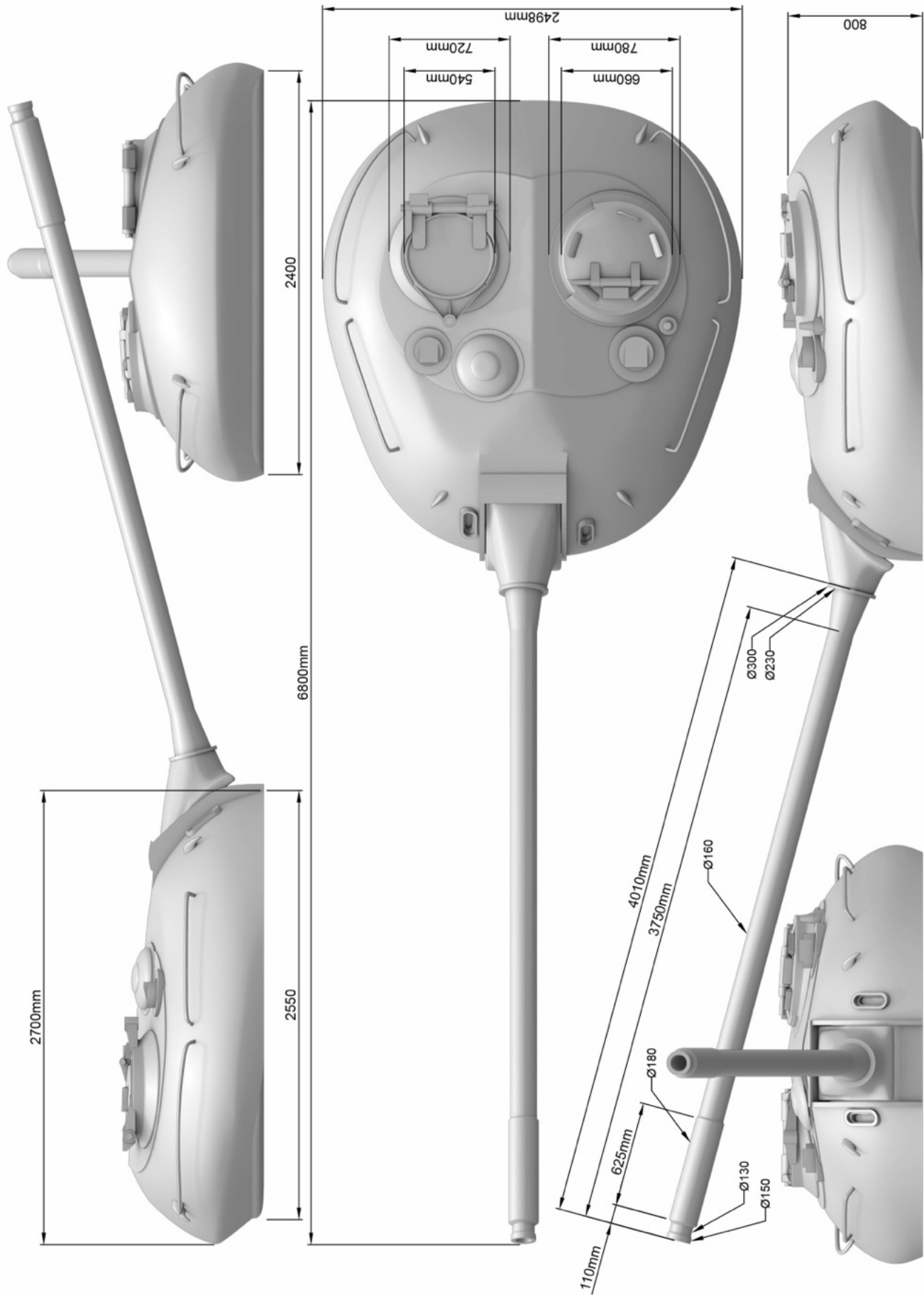
**BOTTOM DRAWER  
(TOASTRACK)**  
PLATES ARE INSERTED HERE



# CAD & INSTRUCTION DRAWINGS



# CAD & INSTRUCTION DRAWINGS



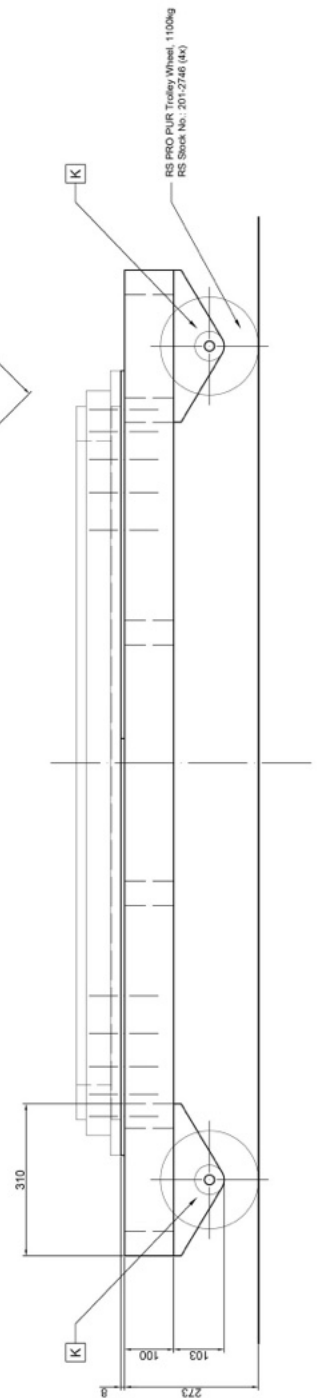
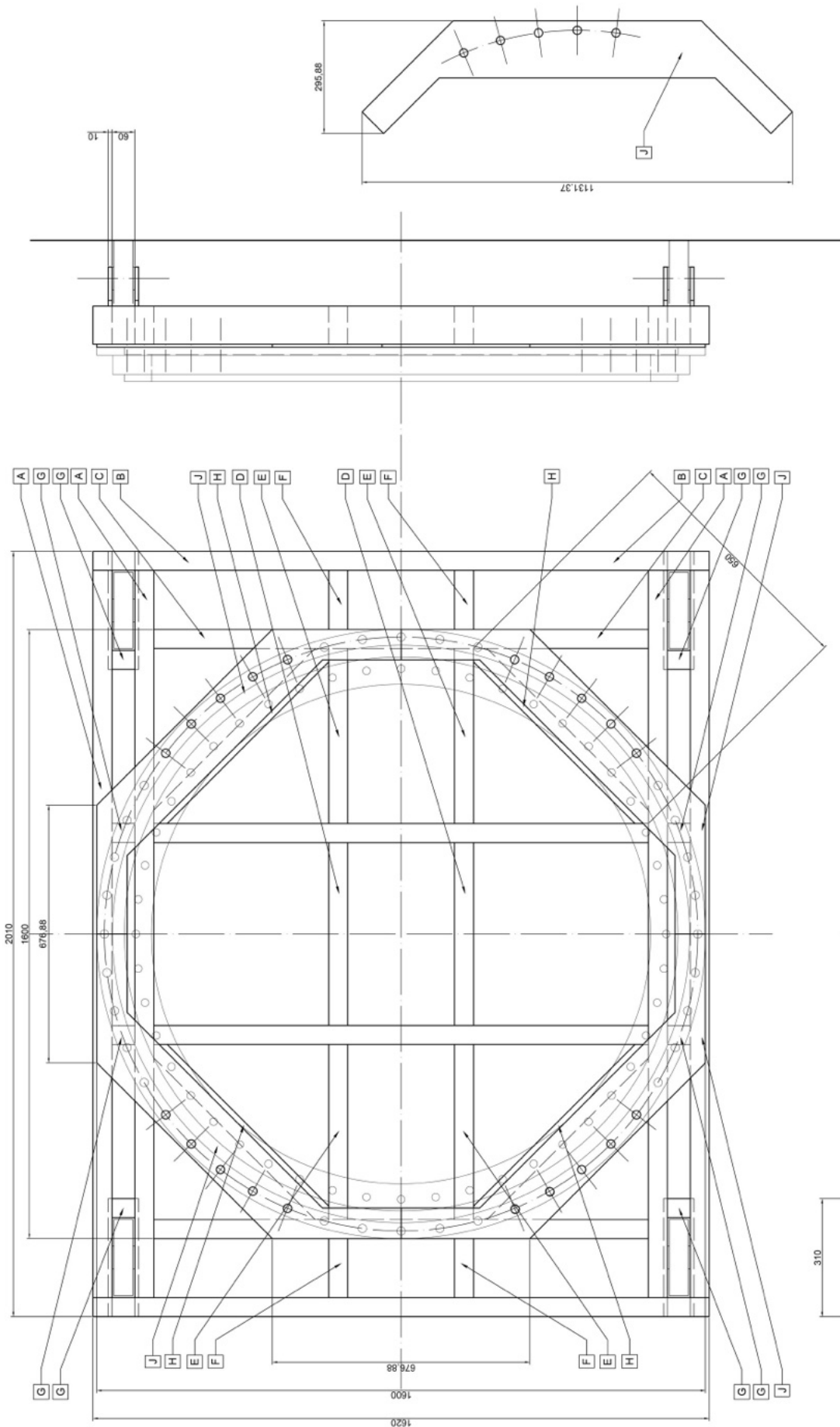
IRAQ MASS GRAVE TANK TURRET J045

A PRIVATE WAR A3 SCALE 1:20 A3 13-0001

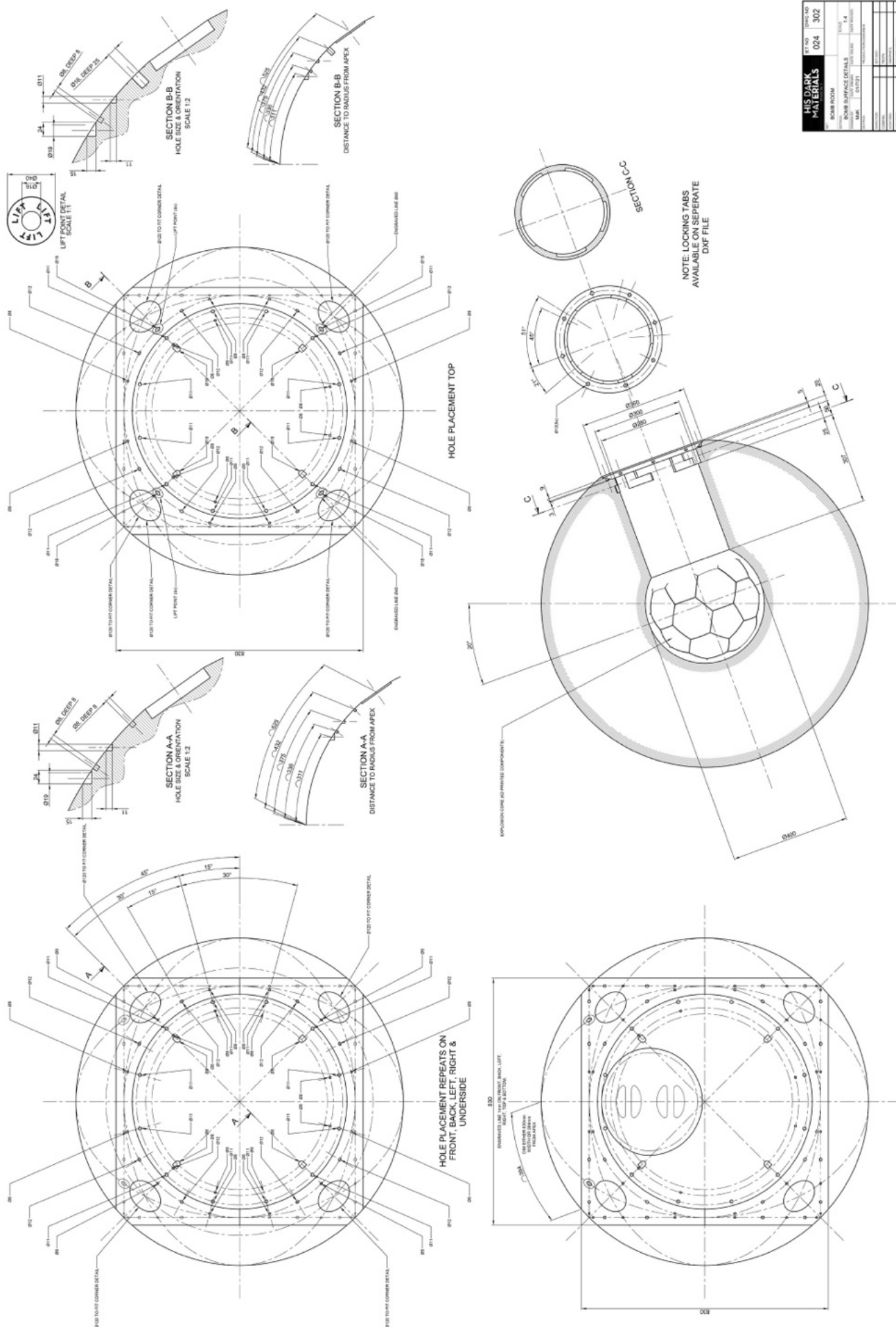


[illegible]

TYPE	AGE	2003/2004/2005	AGE
1	4	1715, 1640	1, 1-403
2	7	1715, 1640	1, 1-403
3	4	1715, 1640	1, 1-403
4	7	1715, 1640	1, 1-403
5	4	1715, 1640	1, 1-403
6	7	1715, 1640	1, 1-403
7	4	1715, 1640	1, 1-403
8	7	1715, 1640	1, 1-403
9	4	1715, 1640	1, 1-403
10	7	1715, 1640	1, 1-403
11	4	1715, 1640	1, 1-403
12	7	1715, 1640	1, 1-403
13	4	1715, 1640	1, 1-403
14	7	1715, 1640	1, 1-403
15	4	1715, 1640	1, 1-403
16	7	1715, 1640	1, 1-403
17	4	1715, 1640	1, 1-403
18	7	1715, 1640	1, 1-403
19	4	1715, 1640	1, 1-403
20	7	1715, 1640	1, 1-403
21	4	1715, 1640	1, 1-403
22	7	1715, 1640	1, 1-403
23	4	1715, 1640	1, 1-403
24	7	1715, 1640	1, 1-403
25	4	1715, 1640	1, 1-403
26	7	1715, 1640	1, 1-403
27	4	1715, 1640	1, 1-403
28	7	1715, 1640	1, 1-403
29	4	1715, 1640	1, 1-403
30	7	1715, 1640	1, 1-403
31	4	1715, 1640	1, 1-403
32	7	1715, 1640	1, 1-403
33	4	1715, 1640	1, 1-403
34	7	1715, 1640	1, 1-403
35	4	1715, 1640	1, 1-403
36	7	1715, 1640	1, 1-403
37	4	1715, 1640	1, 1-403
38	7	1715, 1640	1, 1-403
39	4	1715, 1640	1, 1-403
40	7	1715, 1640	1, 1-403
41	4	1715, 1640	1, 1-403
42	7	1715, 1640	1, 1-403
43	4	1715, 1640	1, 1-403
44	7	1715, 1640	1, 1-403
45	4	1715, 1640	1, 1-403
46	7	1715, 1640	1, 1-403
47	4	1715, 1640	1, 1-403
48	7	1715, 1640	1, 1-403
49	4	1715, 1640	1, 1-403
50	7	1715, 1640	1, 1-403
51	4	1715, 1640	1, 1-403
52	7	1715, 1640	1, 1-403
53	4	1715, 1640	1, 1-403
54	7	1715, 1640	1, 1-403
55	4	1715, 1640	1, 1-403
56	7	1715, 1640	1, 1-403
57	4	1715, 1640	1, 1-403
58	7	1715, 1640	1, 1-403
59	4	1715, 1640	1, 1-403
60	7	1715, 1640	1, 1-403
61	4	1715, 1640	1, 1-403
62	7	1715, 1640	1, 1-403
63	4	1715, 1640	1, 1-403
64	7	1715, 1640	1, 1-403
65	4	1715, 1640	1, 1-403
66	7	1715, 1640	1, 1-403
67	4	1715, 1640	1, 1-403
68	7	1715, 1640	1, 1-403
69	4	1715, 1640	1, 1-403
70	7	1715, 1640	1, 1-403
71	4	1715, 1640	1, 1-403
72	7	1715, 1640	1, 1-403
73	4	1715, 1640	1, 1-403
74	7	1715, 1640	1, 1-403
75	4	1715, 1640	1, 1-403
76	7	1715, 1640	1, 1-403
77	4	1715, 1640	1, 1-403
78	7	1715, 1640	1



<b>HIS DARK MATERIALS</b> <small>THE TV SERIES</small>	<b>BOAR ROOM</b>	<b>SCENE SURFACE DETAILS</b>		SCENE # <b>14</b>	DOWNS AND <b>024</b>	302
		MAKEUP <b>MAK</b>	HAIR <b>HAI</b>	COSTUME <b>COS</b>	PRODUCTION <b>PRO</b>	LOCATION <b>LOC</b>
DATE <b>11/11/2018</b>		TIME <b>10:00</b>		DAY <b>DAY</b>		
LOCATION <b>BOAR ROOM</b>		SET <b>SET</b>		PRODUCTION <b>PRODUCTION</b>		
DIRECTOR <b>DIRECTOR</b>		PRODUCER <b>PRODUCER</b>		EXECUTIVE PRODUCER <b>EXECUTIVE PRODUCER</b>		
WRITER <b>WRITER</b>		EDITOR <b>EDITOR</b>		MUSIC <b>MUSIC</b>		
CAST <b>CAST</b>		PRODUCTION DESIGNER <b>PRODUCTION DESIGNER</b>		EXECUTIVE PRODUCER <b>EXECUTIVE PRODUCER</b>		
PRODUCTION <b>PRODUCTION</b>		EXECUTIVE PRODUCER <b>EXECUTIVE PRODUCER</b>		EXECUTIVE PRODUCER <b>EXECUTIVE PRODUCER</b>		

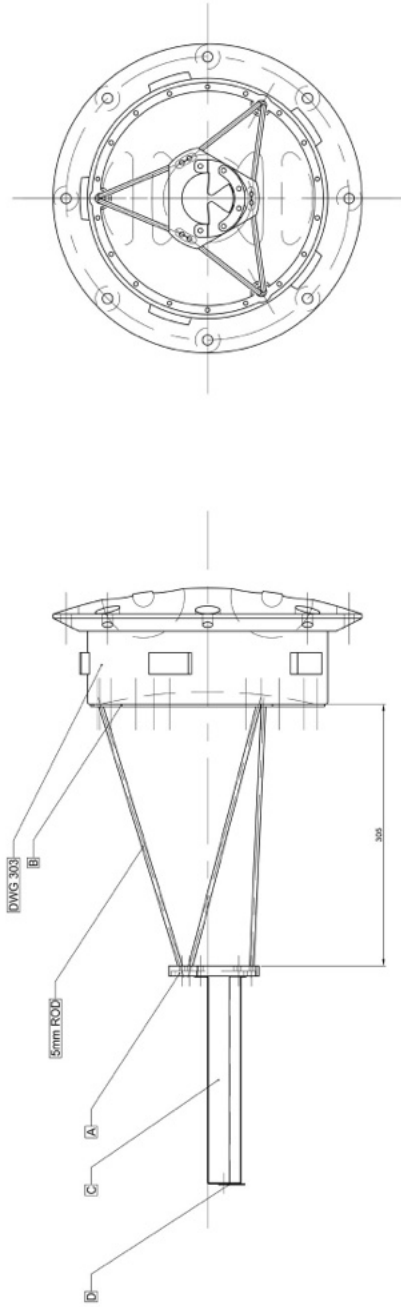




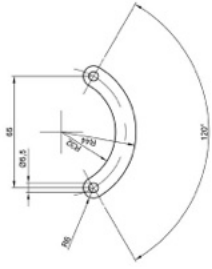
# CAD & INSTRUCTION DRAWINGS

TARGET MOUNT ASSEMBLY  
SCALE 1:2

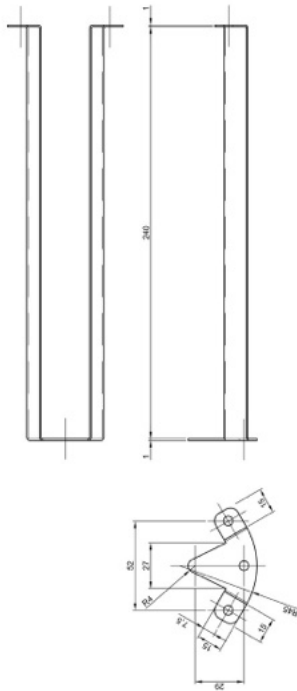
PART D



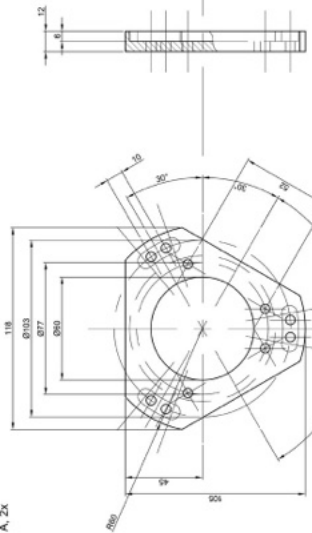
DXF AVAILABLE



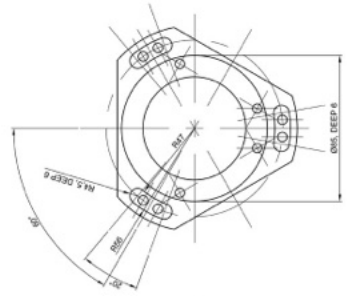
## PART C



DXF AVAILABLE

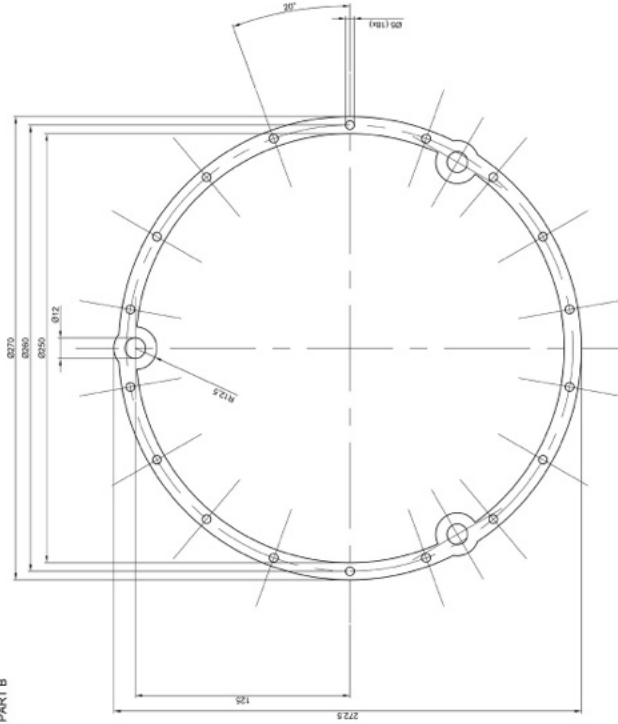


## PART A, 2x



DXF FOR 2x 6mm AVAILABLE

## PART B



DXF AVAILABLE

[illegible]

[illegible]