



Model: Frontier V6 Hybrid Rear Wheel Drive

201 Growth Parkway Angola, IN 46703

U.S Suggested Retail Price List  
Jun-18

Phone: 260-665-2769  
Fax: 260-665-3047  
Email: iim@mobility-usa.com  
www.mobility-usa.com

Quote: \_\_\_\_\_

P.O. \_\_\_\_\_

**Bill To:**

Dealer: \_\_\_\_\_ Contact: \_\_\_\_\_

Address: \_\_\_\_\_

City: \_\_\_\_\_ State: \_\_\_\_\_ Zip: \_\_\_\_\_

Phone: \_\_\_\_\_ Fax: \_\_\_\_\_

Email: \_\_\_\_\_ Mark For: \_\_\_\_\_

**Ship To:**

Same as Bill To: \_\_\_\_\_

Dealer: \_\_\_\_\_ Contact: \_\_\_\_\_

Address: \_\_\_\_\_

City: \_\_\_\_\_ State: \_\_\_\_\_ Zip: \_\_\_\_\_

Phone: \_\_\_\_\_ Fax: \_\_\_\_\_

Email: \_\_\_\_\_ Mark For: \_\_\_\_\_

**Client Information and Specifications:**

Demo Performed:  Yes  No

Client Name: \_\_\_\_\_ A) Top of Shoulders: \_\_\_\_\_

\_\_\_\_\_ B) Chest Depth: \_\_\_\_\_

Diagnosis: \_\_\_\_\_ C) Chest Width: \_\_\_\_\_

\_\_\_\_\_ D) Seat Depth: \_\_\_\_\_

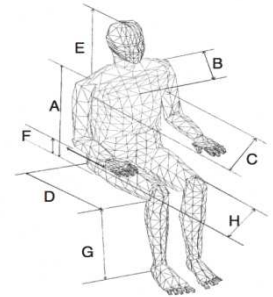
Funding Source: \_\_\_\_\_ E) Top of Head: \_\_\_\_\_

\_\_\_\_\_ F) Elbow to Hand: \_\_\_\_\_

Client Age: \_\_\_\_\_ G) Knee to Foot: \_\_\_\_\_

Weight: \_\_\_\_\_ H) Hip Width: \_\_\_\_\_

Height: \_\_\_\_\_ I) Seat Pan to Elbow: \_\_\_\_\_



**Frontier V6 Hybrid Rear Wheel Drive Features and Specifications**

Joystick/Power Module: Penny and Giles R-net

Length: 31.1" to 35.8" Width: 28"

Turning Radius: 23"

Weight Limit: 400 lbs - 340lbs with lift

Motors: (2) 4 Pole, 24 Volt Motors, 800W each, Gear in Line

Batteries: (2) Group 24, 73 Amp hr

Drive Tires: Black Pneumatic 14" x 3"

Castors: Black Pneumatic or Foam-Filled 2.50-4

Top Speed: 6.5 mph

Performance will vary depending on weight and power options

Product Weight- No power seat frame, MPS seat, standard legrests and batteries: 259 lbs

Product Weight- Including power tilt, seat elevator, power recline back,

Power elevating legrests and batteries: 330 lbs

Weights vary depending upon options

Warranty: Limited Lifetime on Frames

1 Year Limited on Electronics

2 Year Limited on Motors



Other Products by:

Extreme X8 4x4, Frontier V6 AT, Frontier V6 Hybrid,  
Frontier V6 C73, V6 Front Wheel Drive

**Frontier V6 Hybrid Rear Wheel Drive Base Options**

Part Number	Description	Price	HCPCS Code
_____ V6 HYB	<b>V6 Rear Wheel Drive Compact Base No Power</b> Price Includes: Rear Wheel Drive Base Set Up for No Power Seat Function, Independent Articulating Suspension, Charger, and Standard Positioning Belt. <u>Must Choose:</u> _____ Rehab Seat or _____ MPS Back w/ Solid Seat Pan _____ MPS Seat and Back Cushion	\$10,515.00	K0850 K0851
_____ V6 HYB	<b>V6 Rear Wheel Drive Base Single Power</b> Price Includes: Rear Wheel Drive Base Set Up for Single Power Options Independent Articulating Suspension, Charger, and Standard Positioning Belt. <u>Must Choose:</u> _____ Rehab Seat or _____ MPS Back w/ Solid Seat Pan _____ MPS Seat and Back Cushion	\$10,515.00	E2377 K0858 K0859
_____ V6 HYB	<b>V6 Rear Wheel Drive Base Multiple Power</b> Price Includes: Rear Wheel Drive Base Set Up for Multiple Power Options, Independent Articulating, Suspension, Charger, and Standard Positioning Belt. <u>Must Choose:</u> _____ Rehab Seat or _____ MPS Back w/ Solid Seat Pan _____ MPS Seat and Back Cushion	\$10,515.00	E2377 K0862

**FRAME COLOR** select one

Part Number	Description	Price	HCPCS Code
_____ 2900BK	Black	N/C	
_____ 2900R	Red	N/C	
_____ 2900G	Mossy Green	N/C	
_____ 2900BL	Royal Blue Custom color	\$270.00	
_____ 2900Y	Yellow Custom color	\$270.00	

**BATTERIES**

Part Number	Description	Price	HCPCS Code
_____ BAT34	Group 34 Sealed 60 Ah Gel Battery - 43 lbs each installed - two required	\$325.00	E2359
_____ BAT	Group 24 Sealed LA/AGM Battery - 52 lbs each installed - two required	\$325.00	E2363
_____ BAT-G	Group 24 Sealed Gel Battery - 52 lbs each installed - two required	\$385.00	E2363
_____ BCHD	Battery Charger	N/C	E2367

**TIRES**

Part Number	Description	Price	HCPCS Code
<b>Castors</b>			
_____ 1576	Pneumatic - two non-marking castors _____ black _____ grey	N/C	
_____ 1577	Foam Filled - two required - non-marking flat-free castor (each) _____ black _____ grey	\$60.00	
<b>Drive Tires</b>			
_____ 14BP	14"x3" Indoor Hybrid Tire Pneumatic _____ black _____ grey	N/C	
_____ 14BS	14"x3" Indoor Hybrid Tire Solid _____ black _____ grey	\$65.00	
<b>Anti Tips</b>			
_____ 1226	Anti Tips (pair) - required	\$475.00	Page 2/9

**SPARE TIRES**

Part Number	Description	Price	HCPCS Code
<b><u>Spare Drive Tires (each)</u></b>			
14BP	14"x3" Indoor Hybrid Tire Pneumatic _____ black _____ grey	\$265.00	E2381
14BS	14"x3" Indoor Hybrid Tire Solid _____ black _____ grey	\$325.00	E2390
1575C	145/70-6 All Terrain Tire Complete with Black Powder Coated Rim	\$300.00	
TS1	Tire Sealant - pneumatic drive tires only	\$15.00	
PR1	Puncture Resistant Tire Liner - complete 145/70-6 tire, wheel & hub	\$490.00	
1595	Jack - power wheelchair tire jack	\$160.00	A9207
<b><u>Spare Castors</u></b>			
1576	Pneumatic Castor - non-marking castor _____ black _____ grey	\$115.00	E2384
1577	Foam Filled Castor - non-marking flat free castor _____ black _____ grey	\$160.00	E2387

**SEATING SYSTEM**

Part Number	Description	Price	HCPCS Code
Seating Systems below include: Either Multi-Position Seat (MPS) Seat Back or Rehab Back Canes with a MPS seat cushion (MPS seat only available with MPS back) or a solid rehab seat pan.			
2799	No Power Frame - with MPS or Rehab back and seating - 400 lb. Capacity	\$4,500.00	K0108
2851	50° Power Tilt in Space - 400 lb. Capacity*	\$5,780.00	E1002
3932	135° Integrated Shear Reduction(ISR) - Power Redline for Rehab Seating System - 400 lb. Capacity*	\$5,705.00	E1004
1337	135° Power Recline - MPS Seating System - 400 Lb. Capacity*	\$4,100.00	E1003
LS	Variable Seat Height - 12" Seat Elevator for transfer assist - 340 lb. Capacity*	\$5,270.00	E2300
2850	Variable Seat Height & Tilt Combination - 12" Seat Elevator & 50° Power TIS - 340 lb. Capacity*	\$10,440.00	K0108
3500	50° Tilt & 135° Integrated Shear Reduction - for Rehab Seating System - 400 lb. Capacity*	\$10,745.00	E1007
3600	50° Tilt & 135° Power Recline - for MPS Seating System - 400 lb. Capacity*	\$9,430.00	E1006
<b><u>Reduced Drive Capability</u></b> (Option allows for driving capability at 20% speed while elevated and/or tilted)			
RDC	50° Power TIS RDC - Reduced Drive Speed while tilted	\$650.00	K0108
RDC	12" Variable Seat Height RDC - Reduced Drive Speed while elevated	\$650.00	K0108
*Must be ordered with SFCK or MFCK depending on number of options selected			

**POWER SEAT OPTIONS**

Part Number	Description	Price	HCPCS Code
SFCK	<b><u>Single Seat Function Control Kit</u></b>	\$1,400.00	E2310
For operation of a single seat function through the wheelchair electronics via the drive controls and/or push button.			
FTJ	Function Through Joystick	N/C	
CRTL5-P	External 5 Button Box - placed between armpad & joystick -for direct access to power seat functions	\$750.00	
3636JS	8 Way Toggle - placed beside joystick - for direct access to power seat functions - requires PG-JSM509	\$860.00	
MFCK	<b><u>Multiple Seat Function Control Kit</u></b>	\$2,850.00	E2311
MUST be selected if ordering two or more seat functions. This device is used to operate two or more seat functions.			
FTJ	Function Through Joystick	N/C	
CRTL5-P	External 5 Button Box - placed between armpad & joystick -for direct access to power seat functions	\$750.00	
3636JS	8 Way Toggle - placed beside joystick - for direct access to power seat functions - requires PG-JSM509	\$860.00	

**Additional Actuator Functions**

Part Number	Description	Price	HCPCS Code
3801	Retractable Docking Pin*	\$2,750.00	K0108

\*Must be ordered with SFCK or MFCK depending on number of options selected

**Approximate Seat-to-Floor Height** select one \_\_\_\_\_ 17" \_\_\_\_\_ 18" \_\_\_\_\_ 19" N/C

**SEAT SIZES (width x depth)** select one

Part Number	Description	Price	HCPCS Code
<b><u>MPS Seat Sizes (width x depth)</u></b>			
1616MP	16" x 16" Vinyl MPS	N/C	E2605
1618MP	16" x 18" Vinyl MPS	N/C	E2605
1816MS	18" x 16" Vinyl MPS	N/C	E2605
1818MS	18" x 18" Vinyl MPS	N/C	E2605
1820MS	18" x 20" Vinyl MPS	N/C	E2605
2018MS	20" x 18" Vinyl MPS	N/C	E2605
2020MS	20" x 20" Vinyl MPS	N/C	E2605
2218MS	22" x 18" Vinyl MPS	\$365.00	E2606
2220MS	22" x 20" Vinyl MPS	\$365.00	E2606

**Rehab or Flat Pan Seat Sizes (width x depth)**

Adjustable in width & depth for most sizes

2792	Seat Width x Depth	W: _____ (13"-20")	D: _____ (13"-20")	N/C	K0108
2792D	Seat Width x Depth	W: _____ (13"-23")	D: _____ (13"-21")	\$365.00	K0108

**SEATBACK OPTIONS** select one

Part Number	Description	Price	HCPCS Code
<b><u>MPS Options</u></b> - MPS comes with manual recline			
<b>Breathable Cloth MPS Backrest</b>			
1360	Standard Height MPS Back - 16"-20" Wide & 22" Tall	N/C	E2620
1520	Extra Tall MPS Back - 16"-20" Wide & 26" Tall	\$440.00	E2620
1361	Standard Height & Wide MPS Back - 22"-23" Wide & 22" Tall	\$265.00	E2621
1361T	Extra Tall & Wide MPS Back - 22"-23" Wide & 26" Tall	\$525.00	E2621
<b>Wipeable Vinyl MPS Backrest</b>			
1519	Vinyl Standard Height MPS Back - 16"-20" Wide & 22" Tall	\$240.00	E2620
1520V	Vinyl Extra Tall MPS Back - 16"-20" Wide & 26" Tall	\$630.00	E2620
1361V	Vinyl Standard Height & Wide MPS Back - 22"-23" Wide & 22" Tall	\$320.00	E2621
1361VT	Vinyl Extra Tall & Wide MPS Back - 22"-23" Wide & 26" Tall	\$745.00	E2621

**Rehab Back Cane Options** - width 13"-22" & depth 13"-21" & height 24" with 7/8" tubing

3920	Standard Rehab Back Canes	N/C	K0108
3922	Quick Release Flip Forward Rehab Back Canes - for small vehicle transport	\$955.00	K0108
1560	Manual Recline Rehab Back Canes	\$855.00	K0108

**Seatback Accessories**

2530	1 Piece Push Handle - needed for O2 holder, backpack, cane holder	\$125.00	
2533	Accessory Mount - MPS seatback needed for aftermarket headrest, attendant control	\$95.00	

**REHAB SEATING OPTIONS**

Part Number	Description	Price	HCPCS Code
<b>Comfort Company - Backrest &amp; Cushion</b>			
_____ CU-FN	Curve Cushion - Molded foam w/ medial & lateral thigh supports - size: _____ W x _____ D	\$165.00	E2601
_____ 46G	Elements Cushion - Single layer foam with quadra gel pack - size: _____ W x _____ D	\$165.00	E2601
_____ M2-F	M2 Cushion - Quadra gel with pelvic, lateral, & medial thigh supports - size: _____ W x _____ D	\$345.00	E2607
_____ BK-M	Acta Back - moldable center section and high resiliency wings _____ 12" _____ 14" _____ 16" _____ 18" _____ 20" _____ 22"	\$705.00	E2613
_____ BK-R	Radius Back - high resiliency foam _____ 12" _____ 14" _____ 16" _____ 18" _____ 20" _____ 22"	\$695.00	E2611
_____ BK-V	Visco Back - high resiliency foam _____ 12" _____ 14" _____ 16" _____ 18" _____ 20" _____ 22"	\$635.00	E2611
<b>NXT - Backrest &amp; Cushion</b>			
_____ BIOFIT	nxt BIOFIT Cushion - cool feeling Visco Gel top layer - anatomically contoured cushion	\$420.00	E2607
_____ NUFIT	nxt NUFIT Cushion - Multi-layer design w/ SPS technology for comfort and positioning	\$385.00	E2607
_____ HASC	nxt Optima Height Adjustable Back - height adj 16"-20" - 4.75" lateral contour - supports pelvis & allows independent positioning	\$665.00	E2620
_____ FHP	nxt Optima Fixed Height Back - Pelvic Contour - 5.5"-7" lateral contour - pelvic cut out for improved positioning & support	\$650.00	E2620
_____ FHT	nxt Armadillo - 18"x18" - multi-adj postural support - upper segment adj 40° anterior & 20° posterior - lower segment adj 30° anterior & 30° posterior	\$850.00	E2620

**HEADREST OPTIONS**

Part Number	Description	Price	HCPCS Code
_____ 1370	MPS Cloth Headrest - 12"x4.5"x6.25" - MPS seat back only	\$325.00	E0955
_____ 1370V	MPS Vinyl Headrest - 12"x4.5"x6.25" - MPS seat back only	\$325.00	E0955
_____ HD-MF	Moldable Headrest Pad - 10"x6" - requires HD-BH & 2533	\$255.00	E0955
_____ HD-BH	Removable Multi-Axis Headrest Hardware - depth adj .5" behind backrest and 7" forward	\$275.00	E1028

**ARMREST STYLE OPTIONS**

Part Number	Description	Price	HCPCS Code
_____ 3796	Standard Removable Armrest - post style - attaches to the base-height adj 2"	N/C	K0020
_____ FUA	Flip-Up Armrest - post style - attaches to the base-height adj 3" & angle adj 90° - 155°	\$675.00	K0108
_____ PP0031	Reclining Flip Up - attaches to the base & seat back-height adj 4" & angle adj 90° - 105°	\$785.00	K0108
_____ 3071	Reclining Cantilever - Flip Back Articulating - attaches to the seat back-height adj 4" & angle adj 90°-75°	\$1,500.00	K0108
_____ 3331	Quick Release Post for Cantilever Arms - attaches to armrest and base (pair)	\$610.00	K0108

**ARMREST PAD OPTIONS**

Part Number	Description	Price	HCPCS Code
_____ AP3	3"x12" Desk Length Oval (pair)	N/C	K0019
_____ AP4	4"x16" Tapered Oval (pair)	\$85.00	K0019
_____ 1381 (LEFT)	Trough Style Armrest- 6" x 14" w/o hand rest, or 17", 22" w/ hand rest (each) _____ 14" _____ 17" _____ 22"	\$205.00	E2209
_____ 1380 (RIGHT)	Trough Style Armrest- 6" x 14" w/o hand rest, or 17", 22" w/ hand rest (each) _____ 14" _____ 17" _____ 22"	\$205.00	E2209
_____ AP75PR	Magic Mobility Arm Pad - 3"x12" leatherette rounded edges (each)	\$115.00	K0019
_____ AP7550PR	Magic Mobility Arm Pad - 3"x14" leatherette rounded edges (each)	\$120.00	K0019
_____ Custom	Custom Arm Pads: _____	RQ	

**LATERAL SUPPORT OPTIONS**

Part Number	Description	Price	HCPCS Code
<b><u>MPS Seating</u></b>			
LT1-SA	Comfort Company Single Swing Away Lateral Hardware (each) _____ Right _____ Left	\$275.00	E0956
LT1-L/RS4W4T	Comfort Company Single Lateral Pad (each) _____ Right _____ Left	\$65.00	E0956
<b><u>Rehab Seating</u></b>			
LT1-SA	Comfort Company Single Swing away Lateral Hardware (each) _____ Right _____ Left	\$275.00	E0956
LT1-RGD	Comfort Company Single Rigid Lateral Hardware (each) _____ Right _____ Left	\$260.00	E0956
LT1-RS4W4T	Comfort Company Single Lateral Pad Rigid - 5" W x 4" T	\$65.00	E0956
	Stretch-Air Cover (each) _____ Right _____ Left		

**POSITIONING OPTIONS**

Part Number	Description	Price	HCPCS Code
<b><u>Positioning Hardware</u></b>			
30094	Flip Down Hip Guide Hardware - fixed to base near the back (each)	\$250.00	E0978
34397	Removable Hip Guide Hardware - fixed to the base near the back - flat pan only (each)	\$135.00	E0978
PP2010	Removable Knee Adductors Hardware - fixed to the base near the front (each)	\$205.00	E0978
30094	Flip Down Knee Adductors - fixed to the base near the front (each)	\$250.00	E0978
<b><u>Positioning Pad</u></b>			
50491	4" x 6" Pad (each)	\$165.00	E0956
50246	4" x 10" Pad (each) requires 34397 or PP2010	\$165.00	E0956
50049	Adductor Cover With Gel Insert - 4"x6" (pair) requires 50491	\$220.00	K0108

**CHEST HARNESS OPTIONS**

Part Number	Description	Price	HCPCS Code
SH103M	Chest Strap Bodypoint Monoflex, - 4"x49.5"	\$125.00	E0960
PBH	Padded Butterfly Positioning Chest Strap - 7" at Chest	\$155.00	E0960
SH331L-B1	Bodypoint Stayflex, Butterfly, Narrow Front-Pull large w/o zipper - 3.5" at Chest	\$195.00	E0960

**SEAT RESTRAINT OPTIONS select one**

Part Number	Description	Price	HCPCS Code
1608	Push Button Style Seat Positioning Strap - 2"x64"	N/C	E0978
1608XL	Push Button Style Seat Positioning Strap - 2"x80"	\$50.00	E0978
ABSB	Airline Buckle Seat Positioning Strap - 2"x80"	\$130.00	E0978
EB205L-B1	Bodypoint Evoflex Pelvic Stabilizer large - sitting hip width 14"-18" requires HW312-KIT	\$90.00	E0978
HW312-KIT	Mounting Bracket Kit - Evoflex pelvic stabilizer	\$65.00	E1028
WC19V66	WC 19 Transit Kit - approved according to ANSI/RESNA WC19 - includes lap belt 2"x32"	\$835.00	K0108
WC19V67	WC 19 Transit Kit - approved according to ANSI/RESNA WC19 - includes lap belt 2"x44"	\$835.00	K0108

**LEGREST OPTIONS**

Part Number	Description	Price	HCPCS Code
<b><u>No Power Legrests &amp; Footplate Options</u></b>			
1347	Center mount w/one piece fixed Footplate 10"x13", 10" height adj	N/C	K0040
4056	Center mount flip Footplate, height adj _____ 1 piece _____ 2 piece	\$360.00	K0040
1371	Side mount removable leg cane w/two piece flip-up Footplate 8.5"x6", 13" height adj	\$300.00	K0040
AMP	Swing Away Amputee support - 10" extension (each) _____ Right _____ Left	\$375.00	E1020
<b><u>No Power Legrests Accessories</u></b>			
4168	Fixed Center Mount Calf Pads - w/breathable fabric	\$455.00	E0995
4168S	Side Mount Calf Pads - w/breathable fabric	\$455.00	E0995
SP102M	Calf Straps (side mount only) Bodypoint Aeromesh medium - length 36" & width 3.5"	\$95.00	K0039
SP102L	Calf Straps (side mount only) Bodypoint Aeromesh large - length 40" & width 3.5"	\$105.00	K0039
3861	Heel & Side Support - Attaches to the footplate stem and footplate	\$520.00	E0951
SR230	Foot Strap - 1.5" wide strap	\$70.00	E0952
<b><u>Power Legrests &amp; Footplate Options</u></b>			
2232PG	Center Mount Power Elevating Articulating Legrest - footplates below*	\$3,200.00	E1012
3526M	Side Mount Power Elevating Legrest- Swing away legrest w/Flip up 2" height adj footplate* _____ Independent _____ Combined	\$3,600.00	E1010
22578	Standard Two Piece Footplate - 5"x10.5" - requires 2232PG	N/C	K0042
22578R	Standard Two Piece Footplate with 2" Metal Heel Guard - 5"x10.5" - may not fit with all seat sizes - requires 2232PG	\$680.00	K0042
PP0109	Extra Large Two Piece Footplate - may not fit with all seat sizes - 5.5"x11.5" - requires 2232PG	\$575.00	K0041
PP0117	Extra Large Two Piece Footplate with 2" Metal Heel Guard - requires 2232PG	\$750.00	K0041
4580	One Piece Footplate - 11"x11.5" - requires 2232PG	\$180.00	K0042
2219	CMPE Calf Pad Extension (pair) - requires 2232PG	\$95.00	
COVCPEXT	CMPE Calf Pad Extension Cover - requires 2232PG	\$155.00	
*Must be ordered with upgraded electronics SFCK or MFCK depending on number of options selected			
<b><u>Power Legrests Accessories</u></b>			
827A	Foot Straps - 11"-14" (pair)	\$70.00	E0952
HL	Heel Loops - Attaches to the footplate - length 11.5"-13" & width 1"	\$100.00	E0951

**ELECTRONICS Penny & Giles**

Part Number	Description	Price	HCPCS Code
<b>Expandable Joystick</b> - requires PG-PM90, PG-SL			
PG-JSM	Standard R-Net Joystick Module - No LCD display or mono jacks	N/C	E2377
PG-JSM509	Color LCD Joystick Display - with mono jack ports for external switches	\$315.00	E2377
PG-CJSM2-BT	Infra-Red Color LCD Joystick Module - with mono jack ports for external switches and Bluetooth	\$470.00	E2377

<b>Expandable Power Module</b>			
PG-PM90	R-Net Expandable Controller	\$650.00	E2377
PG-SL	R-Net Harness for Expandable Controller	\$455.00	E2313

<b>Joystick Handle Type</b>			
RJK	Cone-Shaped - standard finger control	N/C	E2323
PC103B	Bodypoint Ball Knob - 1/4" ball	\$170.00	E2323
PC102A	Bodypoint U Shaped w/Flex Shaft _____ 3" _____ 4"	\$150.00	E2323
PC108A	Bodypoint Mushroom Head Rubber Grip Handle _____ 2" _____ 2.5"	\$140.00	E2323

<b>Joystick Mount</b>			
1490R	Standard Fixed - Depth Adj 8.25" Right Mount	N/C	
1490L	Standard Fixed - Depth Adj 8.25" Left Mount	N/C	
3082R-25	Swing Away Joystick - Swings to the Right	\$500.00	E1028
3082L-25	Swing Away Joystick - Swings to the Left	\$500.00	E1028
MM	Stealth Midline Mount -2 position mount - Rotation 0° - 180° _____ Right _____ Left	\$950.00	E1028

<b>Joystick Accessories</b>			
PG-AM	Attendant Control Joystick - requires 2533	\$1,145.00	E2331
TBB	Tash Buddy Button - Diameter 2.5" & Height .7" Outer edge force 3.4oz. Center force 7oz.	\$155.00	K0108
ESBLK	Egg Switch - single function push button that can scroll through modes or profiles requires CPS9	\$130.00	
CPS9	Swing Away Egg Switch Hardware - Stealth	\$400.00	
JSLK	Joystick Lock- electronically locks chair from driving	\$185.00	
RVAL	Reverse Alarm - beeps when backing up	\$185.00	

**ALTERNATIVE DRIVE CONTROLS**

Part Number	Description	Price	HCPCS Code
<b>Alternative Drive Systems</b>			
IDH300-1	Stealth i-Drive Head Array - requires F8675 & TWB480-17S	\$7,020.00	E2330
F8675	Stealth Mounting Bracket and Egg Switch	\$380.00	
TWB480-17S	Stealth Headrest Hardware	\$350.00	E1028
HDR-4M-S-C	Switch-It Head Array - Standard three switch head array	\$4,825.00	E2327
PG-CK	Chin Control - w/bib mount and adapter	\$2,315.00	E2373
SNP	Sip and Puff	\$1,350.00	E2325
PG-OMNI	Omni Display - 4" Color Display For Alternative Drive Systems requires ARMS260	\$1,535.00	
ARMS260	Omni adjustable swing away hardware - Stealth _____ Right _____ Left	\$350.00	E1028

<b>Environmental Controls</b>			
PG-BTM2	R-Net Bluetooth Module 2 - Joystick controls cell phone or computer Apple _____ Android _____	\$930.00	



**ACCESSORIES**

Part Number	Description	Price	HCPCS Code
1605	Waterproof Wheelchair Cover	\$130.00	A9270
1606	Waterproof Joystick Cover	\$40.00	A9270
1603	Medical Necessity Bag - Velcros to armrest - 10.5"x6"x1.25"	\$30.00	A9270
1604	Deluxe Backpack - 13.5"x15"x4" requires 2530	\$80.00	A9270
PP0052	Cup Holder - Attaches to the armrest opposite joystick - self leveling	\$140.00	A9270
A02H	Articulating Oxygen Holder - requires 2530	\$835.00	E2208
PP0035	Cane Holder - Heavy Duty requires 2530 - May not work w/some options	\$405.00	E2207
2997	Luggage Rack - Attaches to base behind the chair 10.5"x13"	\$315.00	A9270
2855	Lighting Kit Mounted on Seat- 2 headlights, 2 red marker lights w/turn signals attaches to the base	\$1,050.00	A9270
PP0036	Lift Brackets- Used with 4-point boom lift	N/C	A9270
CM	Charge Mate - 12 Volt/Car outlet and USB port/cell phone charger, with a max draw of 6 amps Requires PG-JSM	\$475.00	A9270
PP0133	Cell Phone Holder - Adj. to fit most cell phones                      Size _____	\$260.00	A9270
WCR630	6' Multifolding Ramp - with traction tape	\$560.00	A9270
RAM117BU	Fishing Rod Holder	\$260.00	A9270

**Be Adaptive Products**

LM100	Limited Mobility Shooting Mount- gun or crossbow	\$1,200.00
TM100	Trigger Mechanism	\$640.00
FM200	Limited Mobility Fishing Mount	\$1,200.00

For More Options Go to [www.beadaptive.com](http://www.beadaptive.com)

DDT	Hand Held Programmer	\$1,365.00
LGSVC	Lift Gate Service - required for facilities without a loading dock	\$105.00*

\*Discounts do not apply

**See our Expanded Accessory PDF @ [mobility-usa.com](http://mobility-usa.com)**

**NOTES:**

---



---



---



---



---



---



---



---



---



---

Note: All specification and prices are subject to change without notice. Prices listed are only valid if ordering with a wheelchair. The HCPCS codes provided are not intended to be billing or legal advice, rather Innovation In Motion's interpretation of the code definitions. Use of the codes provided does not ensure coverage or payment for the item. For coverage information, verify the policy of the appropriate payer. It is recommended to contact Innovation In Motion with any questions regarding proper ordering of the chair at 1-260-665-2769.