



**Literature, Brochure
& Phamphlet holders**



**Multi-Color Screen
Printing**



**Product embedments
available**



**Desktop
accessories**



**Unique pieces
to fit any products
possible**



**Custom acrylic
picture frames**



**Precise engineered
cabinets to your
required measurements**





TERMS & CONDITIONS

SERVICE: Most stock items ship within 24 hours. For larger quantities, urgent orders or custom displays, please call for delivery schedule.

MINIMUM ORDER: \$25.00

TERMS: Cash, VISA, MASTERCARD. Net 30 days based upon approved credit

SHIPPING/FREIGHT: F.O.B. our facility. Drop shipping available.

RETURN POLICY: Stock Items only Must be returned within 30 days and are subject to a 10% restocking fee. No returned goods will be accepted without prior approval.

SAMPLES: Available upon request.

PRICES: Subject to change without notice.

TABLE OF CONTENTS

Plastic Sheet	Page 2
Document Holders	Page 3
Cubes	Page 4
Risers	Page 4
Food	
• <i>Cutting Boards</i>	Page 5
• <i>Bakery Bins & Dispensers</i>	Page 6
Slatwall	Page 6
Picture Frames	
• <i>Two sided curve with base</i>	Page 7
• <i>Two sided Curve non-base</i>	Page 8
• <i>Two sided Magnetic Frames</i>	Page 9
Ballot Boxes and Information Stands	Page 10
Specialty and Custom Displays	Page 11
Graphic and Screen Printing Services	Page 12
Accessories	Page 13
Order Form	Page 14


WHO WE ARE

Plex Lab Corporations success is rooted in the trust we've earned from our many valued customers; people who have relied on us to deliver quality solutions and products on time. Today, we remain a family operated business for over 45 years that combines the values of tradition with the state-of-the-art technologies to meet the ever changing needs of our customers. Manufacturing quality products is as important to us as achieving the highest standards for customer service. At the forefront of our service are professional and dedicated people who meet daily challenges with innovative ideas.

Family owned and operated

Serving Michigan and the United States for over 45 Years.

PLASTIC SHEET INFORMATION

MATERIAL TYPE	THICKNESSES
Clear Acrylic	.060" - .375"
Colored Acrylic	.125" - .375"
Clear Polycarbonate	.060" - .250"
Colored Polycarbonate	.125" - .250"
Clear PETG	.030" - .250"
Acrylic Mirror	.125" - .250"
ABS (White & Black)	.125" - .250"
Foam PVC (White & Black)	3mm - 10mm
Foam PVC (Colored)	3mm - 6mm
HDPE (Cutting Board Natural)	.250", .500", .750"
UHMW	1.25" & 1.50"
 <p>All Available in 48" x 96" sheets as standard cut to Size - Call by noon - ship the next day in most cases</p>	

*Please note: prices are subject to change without notice after 30 days due to the fluctuation in raw material costs

Let's Talk Plastics!

DOCUMENT HOLDERS



1/8" Acrylic
Top Load
Document
Holder



1/8" Acrylic
Bottom Load
Document
Holder

Part Number	Width x Height
TL-2x3	2" x 3"
TL-3x2	3" x 2"
TL-3.5x5	3-1/2" x 5"
TL-5x3.5	5" x 3-1/2"
TL-4x6	4" x 6"
TL-6x4	6" x 4"
TL-5x7	5" x 7"
TL-7x5	7" x 5"
TL-8x10	8" x 10"
TL-10x8	10" x 8"
TL-8.5x11	8-1/2" x 11"
TL-11x8.5	11" x 8-1/2"
TL-11x14	11" x 14"
TL-14x11	14" x 11"
TL-11x17	11" x 17"
TL-17x11	17" x 11"

Quantity discounts apply - custom sizes & screen printing also available/Call for pricing

Part Number	Width x Height
BL-2x3	2" x 3"
BL-3x2	3" x 2"
BL-3.5x5	3-1/2" x 5"
BL-5x3.5	5" x 3-1/2"
BL-4x6	4" x 6"
BL-6x4	6" x 4"
BL-5x7	5" x 7"
BL-7x5	7" x 5"
BL-8x10	8" x 10"
BL-10x8	10" x 8"
BL-8.5x11	8-1/2" x 11"
BL-11x8.5	11" x 8-1/2"
BL-11x14	11" x 14"
BL-14x11	14" x 11"
BL-11x17	11" x 17"
BL-17x11	17" x 11"

*Please note: prices are subject to change without notice after 30 days due to the fluctuation in raw material costs

ACRYLIC CUBES



Assorted acrylic cubes

**With Diamond
Polished
Edges**

Part Number	Thickness x Length x Width x Height
AC-183	1/8" x 3" x 3" x 3"
AC-184	1/8" x 4" x 4" x 4"
AC-185	1/8" x 5" x 5" x 5"
AC-186	1/8" x 6" x 6" x 6"
AC-187	1/8" x 7" x 7" x 7"
AC-188	1/8" x 8" x 8" x 8"
AC-1410	1/4" x 10" x 10" x 10"
AC-1412	1/4" x 12" x 12" x 12"
AC-1414	1/4" x 14" x 14" x 14"
AC-1216	1/4" x 16" x 16" x 16"
AC-148	1/4" x 8" x 8" x 8"

Available in 1/8" & 1/4" Clear Acrylic. Measurements are Exterior. Base Optional. Sizes & Colors also available.

RISERS



*Call for Quote

Risers sold separately or in sets. Materials: Clear Acrylic, Colored Acrylic & Foam PVC. Sizes: 3"-12" as standard.

*Please note: prices are subject to change without notice after 30 days due to the fluctuation in raw material costs

HDPE CUTTING BOARDS

These Tough High Quality Cutting Boards are also great for Boat & Marine usage.



Material: HDPE **Custom sizes cut up to 48"x 96"**
(Color - Natural/White)

Material Thickness

1/4"
1/2"
3/4"
1"



*Please note: prices are subject to change without notice after 30 days due to the fluctuation in raw material costs

FOOD & BAKERY BINS



Single Row Vertical Cookie Rack



3 Row Multiple Horizontal Cookie Rack

Countertop Bakery
Bin with Shelf



Candy
Dispensers

Countertop Meat
Stick Box

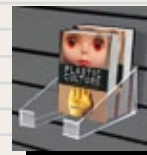
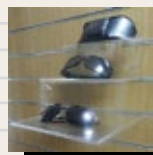


We specialize in Custom Food and Bakery Bins.

SLATWALL PRODUCTS



We manufacture a full line of Slatwall Display Items. From Custom Shelves to a simple hanger, we can provide everything you're looking for.



*Please note: prices are subject to change without notice after 30 days due to the fluctuation in raw material costs

TWO SIDED BASE ACRYLIC CURVED PICTURE FRAMES

*The Perfect Piece to Display your Companys Mission Statement
or your most cherished moments on either side!*



**With Diamond
Polished
Edges**

Description	Size	Color	Part #
Acrylic Two Sided Curved - with Base	4" x 6"	Clear	DB-461
Acrylic Two Sided Curved - with Base	4" x 6"	Black	DB-462
Acrylic Two Sided Curved - with Base	4" x 6"	White	DB-463
PVC Two Sided Curved - with Base	4" x 6"	White	DB-464
PVC Two Sided Curved - with Base	4" x 6"	Black	DB-465
Acrylic Two Sided Curved - with Base	5" x 7"	Clear	DB-571
Acrylic Two Sided Curved - with Base	5" x 7"	Black	DB-572
Acrylic Two Sided Curved - with Base	5" x 7"	White	DB-573
PVC Two Sided Curved - with Base	5" x 7"	White	DB-574
PVC Two Sided Curved - with Base	5" x 7"	Black	DB-575

Quantity, Group Pricing and Custom Sizes Available - Please call Plex Lab for Quote

**Please note: prices are subject to change without notice after 30 days due to the fluctuation in raw material costs*

TWO SIDED (NO BASE) ACRYLIC CURVED PICTURE FRAMES

***Our Two Sided Curved Lense Picture Frame (No Base)
is an economical way to showcase those special moments!***



**With Diamond
Polished
Edges**

Description	Size	Color	Part #
PVC Two Sided Curved - No Base	4" x 6"	White	DBP-466
PVC Two Sided Curved - No Base	4" x 6"	Black	DBP-467
PVC Two Sided Curved - No Base	5" x 7"	White	DBP-576
PVC Two Sided Curved - No Base	5" x 7"	Black	DBP-577

Quantity, Group Pricing and Custom Sizes Available - Please call Plex Lab for Quote

**Please note: prices are subject to change without notice after 30 days due to the fluctuation in raw material costs*

TWO SIDED MAGNETIC PICTURE FRAMES



(Front & Back clear acrylic - black, white or color acrylic insert center)

*Your name can be displayed (**Boldly** or Discretely) on your pieces if needed.

*We can display your Company's logo in as many colors as needed. Engraving optional if needed also.

Sizes come in: 4"x 6" and 5"x 7" Landscape Format

Quantity, Group Pricing and Custom Sizes Available - Please call Plex Lab for Quote

**Please note: prices are subject to change without notice after 30 days due to the fluctuation in raw material costs*

BALLOT BOXES & INFORMATION STANDS



1/4" Clear Acrylic
Suggestion/Ballot
Boxes



Information Stand.
Custom sizes & shapes
available

SUGGESTION/BALLOT BOXES

These locking and non-locking suggestion/Ballot boxes, also known as a comment box or a collection box are perfect for collecting comments, ballots or suggestions from your employees, customers, or visitors. This locking suggestion box is fabricated with molded acrylic. The lock & key feature allows its contents to be securely contained. This product also has a few other ideal features, making it an ideal purchase at an affordable price.

Ballot Boxes available in different materials, sizes and colors.

Quantity, Group Pricing and Custom Sizes Available - Please call Plex Lab for Quote



INFORMATION STANDS

These acrylic stands, also known as Information holders, are a modern looking advertising tool. These stands are manufactured with thick, polished acrylic and can be tailored to any of your needs. These Acrylic displays are durable and strong. Clear stands are ideal for busy areas like bank queue lines, hotel lobbies, retail front doors, and large offices.

Quantity, Group Pricing and Custom Sizes Available - Please call Plex Lab for Quote

**Please note: prices are subject to change without notice after 30 days due to the fluctuation in raw material costs*

SPECIALTY DISPLAYS & RAFFLE DISPLAYS

SPECIALTY DISPLAYS



If you want to grab someones attention, there's no better way to get it than with Plex Labs acrylic cases, displays or speciality product holders. We produce the most popular and effective plastic displays used in today's market. Placing your promotional Item, sales item or that favorite sports memorabilia item inside one of our custom display cases instantly gives your message or collective piece added importance as well as a more polished and professional look or brand perception. No matter what you're communicating, when it comes to displaying you're products our acrylic speciality products are the perfect tool.

RAFFLE DISPLAYS

Precision-crafted, these Custom Acrylic Raffle Drums feature:

- Locking Casters for easy movement and placement.
 - Drum Locking Mechanism for easy lock-out. Available in Floor Standing Models and Countertop Models as well.
- Custom colors available also.

Please call Plex Lab for Questions & Pricing



*Please note: prices are subject to change without notice after 30 days due to the fluctuation in raw material costs

GRAPHICS & SCREEN PRINTING SERVICES



Plex Lab specialize in building brand identity to separate your company and services from that of your competition. The design elements that make up your brand identity must speak on behalf of your entire company and with more and more competition appearing on the scene it is vital that your design and brand identity stand out from the rest. We specialize in doing graphics for: displays, display booths, promotional pieces, signage, vinyl cutouts, personalized picture frames, screen printing, and much more. Please contact us for services and prices.



We provide a professional solution to the ever changing printing needs of our clients.

*Please note: prices are subject to change without notice after 30 days due to the fluctuation in raw material costs

ACCESSORIES



Part Number	Description
32-Brillianize-8	Brillianize - 8 oz.
32-Brillianize-Gal	Brillianize - Gallon
31-Weldon #4 quart	Weldon 4 - Quart
31-Weldon-4	Weldon 4 - 4 oz.
31-#33 Cement	Thickened Cement
33-Edge srapper	Edge Scraper
33-Plasticator. 2oz	Plasticutter
33-Plasticator 2oz	Applicator
33-Plasdrill 1/8"	1/8" Drill
33-Plasdrill 3/16"	3/16" Drill
33-Plasdrill 1/4"	1/4" Drill
33-Handle-Clear	Handle - Clear - 3/8"x2"
33-Hasp-Clear	Hasp - Clear Acrylic
33-Hinge-Clear-1.5"	Acrylic Hinge - Clear - 1-1/2"
33-Hinge-Black-1.5"	Acrylic Hinge - Black
33-Hinge-White-1.5"	Acrylic Hinge - White
33-Hinge-Clear-12"	Hinge - Clear - 1x12"
33-Cab-Clear-1-1/8"	Acrylic Cabochons - 1-1/8"
33-Balls-Clear-1/2"	Acrylic Balls - 1/2"
33-Balls-Clear-3/8"	Acrylic Balls - 3/8"
33-Rings-Clear	Acrylic Rings
33-KeyHole Small Clear	Keyhole, Small - Clear
33-Cab-Clear-3/8"	Acrylic Cabochons - 3/8"

*Please note: prices are subject to change without notice after 30 days due to the fluctuation in raw material costs



*Please contact Plex Lab Corporation
for updated material and product
information costs.*

Item#	Description	Qty.	Price	Subtotal

Order Total: _____

Tax: _____

Shipping: _____

Total: _____

Name _____

Address _____

Phone _____



☐ VISA

☐ MC

☐ American Express

☐ Discovery

☐ Check (please provide Drivers License # & Expiration Date)

☐ Cash

Credit Card # (please provide 3 digit security code) _____

Exp. Date _____

Signature _____

Plex Lab Corporation 17605 Helro Dr. Fraser, MI 48026 (586) 294-7262 1-800 448-9596 Fax: (586) 294-7276

www.plexlabplastics.com