

Weekly Commodities Charts Newsletter

November 27, 2017

The Weekly Commodities Charts Newsletter provides Cornelius Luca's trade ideas, model signals, and absolute charts

© 2017 Luca Global Markets, LLC. All rights reserved. This content is provided as general information only and does not constitute investment advice or a representation that any investment, security or other product is suitable for any person. This content reflects the opinions only of the author and cannot be interpreted as advice.

This content is the intellectual property of Cornelius Luca. Any copying, distribution or redistribution of this content is expressly prohibited without the prior written consent of Cornelius Luca.

Cornelius Luca shall not be liable for any errors in the content, or for any actions taken in reliance thereon.

Trade Ideas

- Energy: Long crude oil *while above* the 5-day exponential moving average
- Metals: Long gold *while above* the 21-day exponential moving average
- Softs: Long soy meal *while above* the 5-day exponential moving average

Commodities Models – Daily & Weekly

	<i>Commodity</i>	<i>Daily Model</i>	since	Daily Bias (> or < 21-day EMA)	Daily Risk	<i>Weekly Model</i>	since	Weekly Bias (> or < 21-week EMA)	Weekly Risk
Energy	Crude Oil	S	27-Nov	bullish	slightly bearish	L	15-Sep	bullish	slightly bullish
	Brent Crude	L	21-Nov	bullish	slightly bullish	L	24-Nov	bullish	slightly bullish
	Natural Gas	L	27-Nov	slightly bearish	slightly bullish	L	27-Nov	sideways	neutral
Metals	Gold	L	27-Nov	sideways	neutral	L	10-Nov	slightly bullish	slightly bullish
	Silver	L	27-Nov	sideways	neutral	L	27-Nov	sideways	neutral
	Copper	S	27-Nov	slightly bullish	slightly bearish	L	20-Nov	bullish	slightly bullish
Softs	Coffee	L	21-Nov	slightly bearish	slightly bearish	L	22-Nov	slightly bearish	slightly bullish
	Soy Meal	L	17-Nov	slightly bullish	slightly bullish	L	10-Nov	slightly bullish	slightly bullish
	Wheat	S	22-Nov	slightly bearish	slightly bearish	S	13-Nov	slightly bearish	slightly bearish
	Corn	S	24-Nov	slightly bearish	slightly bearish	S	10-Nov	slightly bearish	slightly bearish

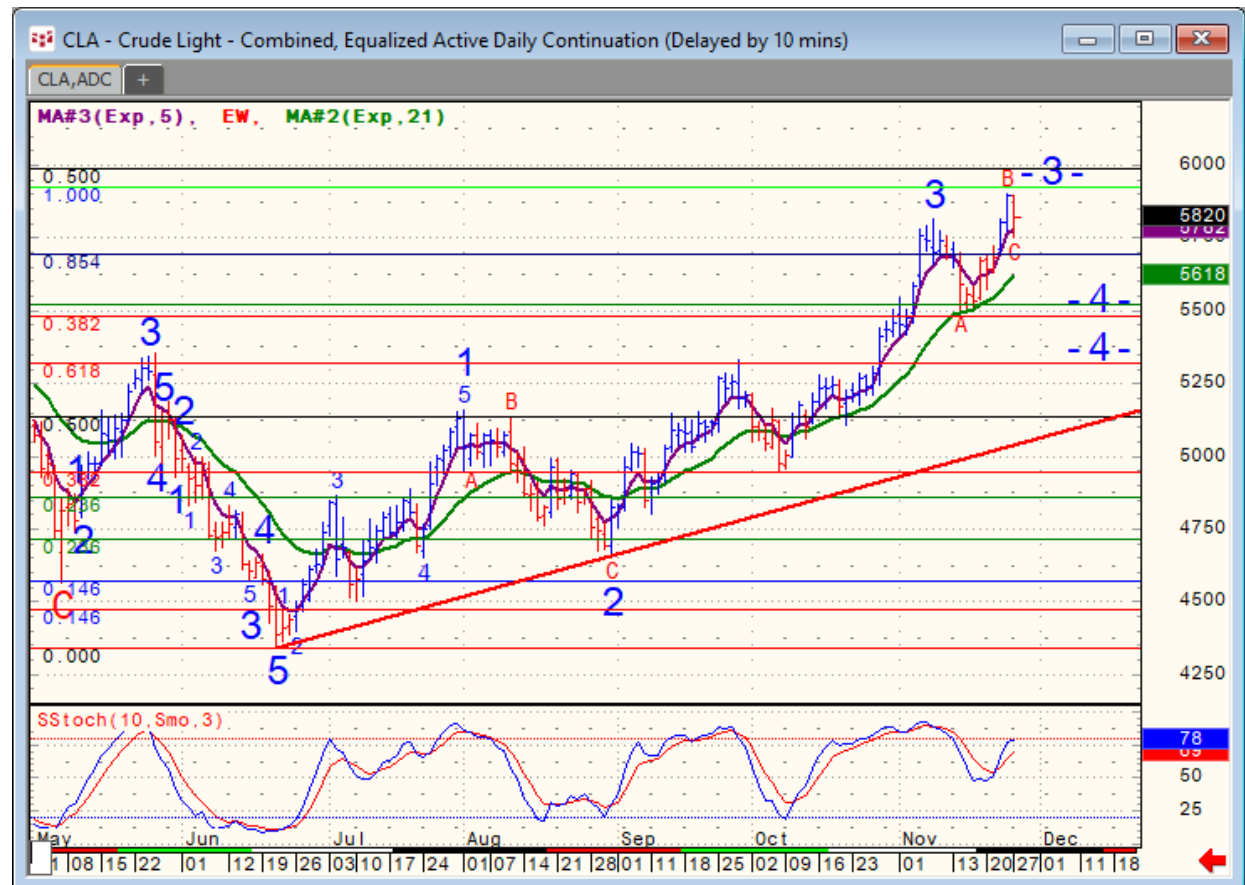
Source: Proprietary Luca Global Markets, LLC Model

Commodities Energy Trade Idea

Comment:

Long crude oil while above the 5-day EMA

- Crude oil is trying to correct from a near 11-month high
- It is holding above both the 5- & 21-day EMAs
- Initial resistance: 59.27
- Further resistance: 60.07
- Initial support: 57.55
- Further support: 56.00, 54.84 & 53.17
- Fast stochastics: bullish



CQG Inc. © 2017 All rights reserved worldwide. <http://www.cqg.com>

Mon Nov 27 2017 13:50:09, CQG 17.12.860

Commodities Metals Trade Idea

Comment:

Long gold *while above the 21-day EMA*

- Gold is making a slow but jittery upmove above its 21-day EMA
- Initial resistance: 1,299
- Further resistance: 1,307, 1,339 & 1,358
- Immediate support: 1,283
- Further support: 1,215

- Fast stochastics: bullish



Soft Commodities Trade Idea

Comment:

Long soy meal while above the 5-day EMA

- Soy meal trades pierced the top of a symmetrical triangle on its way to a 4-month high
- It trades above its 5-day EMA & is overbought
- Initial resistance: 329.80
- Further resistance: 334.10 & 338.80
- Immediate support: 322.90
- Further support: 317.30 & 309.60

- Fast stochastics: bullish (overbought)



How to Use the Heat Map

Bias: If the Candle > 21-period EMA = bullish
 If the Candle < 21-period EMA = bearish
 If the Candle around 21-period EMA = sideways

Long or Short	Commodities	Since when		Risk: Bullish or Bearish Candle as of Monday am EST					
		Daily Model	since	Daily Bias (> or < 21-day EMA)	Daily Risk	Weekly Model	since	Weekly Bias (> or < 21-week EMA)	Weekly Risk
Energy	Crude (CLc1)	S	27-Apr	bullish	slightly bullish	L	23-Mar	slightly bearish	slightly bullish
	Brent (LCOc1)	L	21-Apr	slightly bullish	slightly bullish	L	6-Apr	slightly bearish	slightly bullish
	Natural gas (NGc1)	S	23-Apr	bearish	bearish	S	20-Apr	bearish	slightly bearish
	Palm oil (FCPOc1)	L	24-Apr	sideways	neutral	S	20-Apr	slightly bearish	slightly bearish
Metals	Gold (GCc1)	S	24-Apr	bearish	bearish	S	20-Mar	slightly bearish	slightly bearish
	Silver (SIc1)	S	22-Apr	bearish	bearish	S	24-Apr	bearish	bearish
	Platinum (PLc1)	S	20-Apr	bearish	bearish	S	20-Mar	bearish	slightly bullish
	Copper (HGc1)	L	24-Apr	slightly bearish	slightly bullish	S	24-Apr	slightly bearish	slightly bearish
Softs	Coffee (KCN5)	L	24-Apr	sideways	neutral	L	24-Apr	slightly bullish	slightly bullish
	Cocoa (LCCN5)	L	23-Apr	bullish	bullish	L	13-Apr	bullish	bullish
	Soy meal (SMN5)	S	24-Apr	bearish	slightly bearish	S	24-Apr	bearish	slightly bearish
	Wheat (WN5)	S	24-Apr	bearish	slightly bearish	S	24-Apr	bearish	bearish
	Corn (CN5)	S	20-Apr	bearish	bearish	S	6-Apr	bearish	bearish

Source: Proprietary Luca Global Markets, LLC Model

L = long
 S = short