



Good Beekeeping



Good Fellowship



Since 1948 Exploring the Wonderful World of Beekeeping Together

The Bee Buzzer

Monthly Publication of the

Northeastern Kansas Beekeepers' Association

VOLUME 78, NUMBER 1

EDITOR: NICK BRETZ

JANUARY 2026

General Meeting

Monday, January 26th (7:00 p.m.)

K-State Research and Extension office

11811 S. Sunset Dr., Olathe, KS

Main Program: Our confirmed speaker is Jackie Griffin - "The ABCs of getting bees"

Beelines

By President Jessica Popp

Hello NEKBA Members,

Welcome to 2026! I'm excited to introduce myself as your new president. My name is Jessica Popp. I've been keeping bees since 2017, and many of you may know me from Beekeepers.com in Lenexa. I also serve as the Editor for the Midwestern Beekeepers Association. I'm truly looking forward to sharing new ideas, learning from one another, and continuing to grow alongside this club.

January has always been one of my favorite times of the year. It's a season of fresh starts, both in life and in beekeeping. This year, my bee-related resolutions include attending all NEKBA monthly meetings, keeping better records during inspections, culling old frames, and making it to Funday!

If you're traveling this month to either ABF in Mobile, Alabama, or NAHBE in Louisville, Kentucky, I hope you have a fun and educational trip. Please share what you learn in our Facebook group. We'd love to follow along and learn with you.

If you're new to the club, welcome! And if you're a returning member, thank you for being part of NEKBA. We truly are stronger when we work together. We have many plans this year to continue growing and better serving our members, and I'd love to hear your ideas. Please feel free to reach out anytime.

Here's to a great year ahead!

A note from our previous President, Cheryl Burkhead

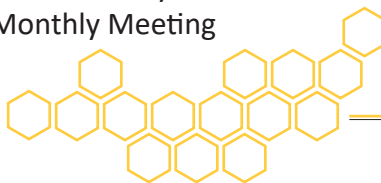
It has been a pleasure to serve as your president these past 2 years. Having served as an officer for the past 7 consecutive years, I felt it time to step back for a while. I am excited to see some new faces on the board and am optimistic as our club heads into the new year. We have an enthusiastic group of officers ready to assume their new positions. I will still be around to field your beekeeping questions and help where I can. Here's to another exciting year with the bees.





2026 Meeting Dates

Jan 26th, Monthly Meeting
Feb 14th, Mar 14th, Mar 21st Beginning Bee Classes
Feb 16th, Monthly Meeting
Feb 21st, Year 2 and Beyond Class
Mar 16th, Monthly Meeting



Ol' Bee Gal

Becky Tipton



The NEKBA planning team has been busy as.... bees.... these past few weeks planning for a terrific 2026. Hap-BEE New Year! We want all our members to know what's coming and to be ready to start the new year.

I mailed nearly 500 event cards to all our members with a list of dates and times for this year's big activities.

Look for it in your mailbox. On one side is a list of our beginning classes. Kristi Sanderson is trying to make these accessible to everyone with three separate days and locations. We are also offering a slightly more advanced class, Year 2 and Bee-Yond. If you have less than 5 years beekeeping experience, do your bees a favor and join one of these classes.

Below the classes we've listed our meeting dates. Yana Ma-gruder and her committee are planning something special for every meeting. Our meetings aren't boring. They are opportunities to have your questions answered and learn about what's going on with the bees. If you have ideas for meeting topics, let us know. We love a good suggestion.

As soon as spring arrives, the club will begin our Open Teaching Apiary events. We don't have dates planned—you can use the QR code on the event card to check our website.

The other side of the card is all about our Funday 2026! The Suckow's planning is in full swing to make a day everyone can enjoy. Mark your calendar. Want to get even more out of the Funday experience? Volunteer. Becoming part of the work crew will give you insight to how things

work and be part of the fun in Funday!

Keep your event card! Stick it on your refrigerator or pin it to your calendar. If you have a friend who is interested in beekeeping (they have probably heard you talk a lot about bees), grab a card for them at the January meeting. Nothing makes beekeeping more fun than a bee buddy.

Some of you know that Steve and I teach a beginning beekeeping class in Shawnee County. (I think this is our 14th year.) Our first class of the year will be Jan. 21st, 6:30-8 PM. The class meets once/month and follows the beekeeping year. We start with an overview and biology. Next month is equipment, etc. The class is free. It is sponsored by Shawnee County Parks and Rec. and you can register on their website.

If any of you reading this are on the western side of the NE KS Beekeepers group, please consider joining us. We'd love to have you. This makes a nice companion to the classes taught through NEKBA. Our NEKBA classes are intense, comprehensive, one-day classes. Our class takes those topics and spreads them out—it's a refresher of everything you heard. I almost always need to hear things more than once to remember them. Steve and I also do Open Teaching Apiary Events.

Our first OTA is very tentatively planned for March 22. Anyone is welcome to join these events. Please let me know if you'd like to attend. Email: bstbees@gmail.com for a class schedule.

The focus of this organization has always been education. We share what we know with the goal of creating a community rich in healthy bees. Choose a new year's resolution that will be so much fun. Learn about bees.





Ask Quinby & Remi

This month Remi and Quinby are unhappily at the kennel while Joli and Cecil attend The American Beekeeping Federation meeting in Mobile Alabama. Joli will write

their article for them.

Two years ago, I made the decision to sell my collection of antique bee plates, honey pots, most of my bee-themed jewelry, as well as Cecil's collection of antique bee books. The money from that would fund a trip to Alaska! HA! Two years ago, we went to Louisville to NAHBE and set up a booth to sell our treasures. We had trouble with our truck, rented a car to come home, left the truck and picked it up 2 months later after it was repaired, no profit from that trip!

This year we got a booth at the American Beekeeping Federation meeting. Last week the transmission on Cecil's truck went out, so we rented a cargo van! It's not looking good for a profit on this meeting either!!! We've had a wonderful trip so far, reconnecting with many old friends, enjoying delicious seafood, spending time on the Gulf of Mexico, and doing some bird watching.

Between customers, I've browsed Cecil's books in the booth. One book I picked up was "*Bees are my Business*" by Harry Whitcombe. It is about a beekeeper in the early 1950's who was trying to sell his honey. At that time there was a fixed price of 16 cents, beekeepers could not sell their honey for more than that. This beekeeper decided to hold his honey (barrels of it) until the price improved. After a year he decided that he needed to sell it because they were broke. They had visited a local farmers market and noticed that there weren't any honey vendors there. The next week he filled 200 5 lb. tins with honey. He loaded up the family and off they went! By the end of the market, they sold about 190 containers for \$1.00 each.

They were so thrilled. They then traded the not sold honey with vendors who had left over produce. They went home with chickens, rabbits, vegetable and fruit.

With this unseasonably warm weather, keep an eye on your bees. They eat much more food than usual because they are so active. It is critical to make sure that they do not starve. It has been warm enough to feed liquid syrup. Others may choose to make some candy boards. Whatever you do, do it before it is too late!

This is also the time to plan for the Spring season. Does your equipment need repairing? Does it need to be painted? This is a great time to render your beeswax and get it cleaned up.

It's a good chance to catch up on reading. The club's library offers a wide selection of both new and classic books. Check them out at the next meeting on January 26th (note the date change).

This is also a great time to sign up for the Year 2 and Beyond class and the new beekeeper class. See if you can get a co-worker, friend, or relative to attend with you—or without you. We would really appreciate it if you could help promote our beekeeping classes. If you would like to use one of the flyers to promote the classes on your own Facebook site, you could email me at heartlandhoneyks@gmail.com and I can email them to you. Our NEKBA Facebook is a private group so you can not share a post from there. I believe that you could also copy them from our club website at www.nekba.org.

Plan for Spring. If you plan on expanding your hives, now is the time to get your equipment made and painted. You can also get your packages or nucs ordered. Several club members sell nucs.

Are you planning a pollinator garden? Get your seeds or plants ordered now. Working in the dirt is therapeutic.



SUBSCRIBE TO A MONTHLY BEE MAGAZINE. STAY INFORMED.



[Bee Culture Magazine \(link\)](#)

Use the links to subscribe directly.

Annual subscription rates under \$6 per month for both!

This is fantastic information right at your fingertips. As part of your beekeeping experience, it's important to be up-to-date with the trends in bee biology, honey processing, the industry, and much more!



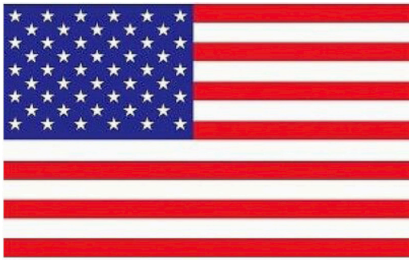
[American Bee Journal \(link\)](#)

Tips for January

- 🐝 Begin your recordkeeping for 2026; calendars are already ½ price so get one that you can write on. Vow to keep track of when different plants bloom in your area, if you fed, how your bees did, if you replaced any equipment etc.
- 🐝 Check a beekeeping book out at the library.
- 🐝 Build or repair any equipment.
- 🐝 Order your queens and package bees as soon as possible.
- 🐝 Check the lids on your hives; make sure they have a heavy rock or a cement block on top. We have had some fierce winds this winter.
- 🐝 Plan next year's garden to include some nectar producing plants that have not been treated with neonicotinoids.
- 🐝 Review your successes and challenges from last year.
- 🐝 Remove dead-outs and clean or store any equipment.
- 🐝 Attend bee meetings and beekeeping classes-bring a friend with you to get them started this year!
- 🐝 Check food stores in your hives.
- 🐝 Renew your membership, send in your dues—you can do it online now by going to nekba.org

Military/Veterans Apprentices Program

Buck Bradley, Military/Veterans Appr. Liaison



Mentors Needed in the Leavenworth Area for NEKBA Military Scholarship

NEKBA is seeking experienced beekeepers in

the Leavenworth area who are willing to serve as mentors for recipients of the NEKBA Military Scholarship. At the moment, we have four veterans who need mentors.

The Military Scholarship was created to support active-duty service members and veterans who are interested in learning beekeeping. A key part of the scholarship's success is pairing recipients with knowledgeable local mentors who can provide hands-on guidance, practical advice, and encouragement during their first seasons with bees.

Mentors play an essential role by:

- Answering questions as they arise throughout the season
- Providing basic hive inspections or demonstrations when possible
- Helping new beekeepers understand seasonal management, troubleshooting, and best practices
- Offering support that builds confidence and long-term success in beekeeping

Mentorship does not require a significant time commitment or formal teaching, just a willingness to share experience and be a local point of contact. Any beekeeper with at least two years of experience is encouraged to volunteer.

If you are located in or near Leavenworth and are interested in giving back to the beekeeping community while supporting military members, NEKBA would love to hear from you.

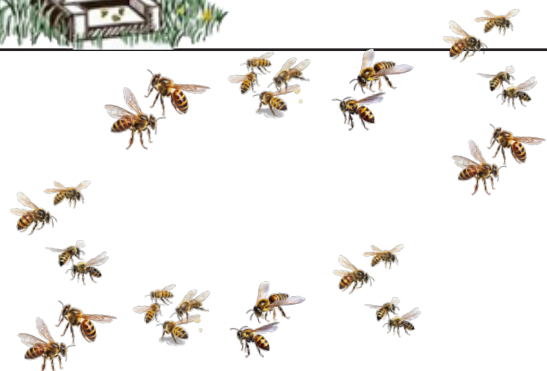
To volunteer as a mentor or to learn more about the Military Scholarship program, don't hesitate to get in touch with Buck Bradley at babradley82@gmail.com or 785-248-1005.

Your experience can make a meaningful difference, one hive, one beekeeper, and one season at a time.



The NEKBA Bee Yard

They're being watched and cared for during the winter. Events will be available as the weather warms up!



Honey Plants

Jo Patrick, Honey Plants Chairman



Setting goals for a new year can be a useful tool when it involves beekeeping and gardening. If you are new to beekeeping your goals could include attending NEKBA meetings and classes to learn more about beekeeping, managing your colonies and their food stores so that they survive the

winter without starving, harvesting your first honey crop or harvesting more honey than last year. All these goals except the first one, depend in part, on your apiary location and what blooming plants are in that foraging area.

Timing of blooms is also an important consideration. The more honey plants there are for your bees to gather nectar and pollen from, the easier it will be to achieve your goals.

If your bees went into winter light on food stores, consider adding late summer and fall blooming honey plants to your area to help in the future. In NE KS the native blooming choices are few. They are sunflowers, asters, and goldenrod, specifically stiff goldenrod. Even though the selection is limited, you can always add more of the same. You can also explore non-native alternatives such as planting a buckwheat cover crop. Another is the Seven Son tree, an early September blooming ornamental tree.

A blooming tree will catch a honey bee's eye. There are many types of sedums, but the upright fall bloomers really attract honey bees as well as other pollinators. The variety 'Autumn Joy' is very popular. Did I mention that sedums are hard to kill? Some flowering annuals that could be added to flower beds are Mexican Sunflower, Nasturtiums, Zinnias, and Morning Glory vines. These bloom in late summer when very little is available to honey bees.

If your goal is to harvest your first honey crop or increase your honey harvest, start by thinking about food sources the colony needs to build up the population coming out of winter. A steady supply of nectar and pollen sources will encourage the queen to lay. We are fortunate that we have plenty of elms, maples, and willows that honey bees can forage in the early months of the year. Most of us don't need to feed pollen substitute. NE KS is rich in pollen producers.

The peak blooming period, for honey or nectar flow, in our area is typically in mid to late May and June. During this time the beekeeper really needs to be aware of what is blooming and when. I suggest you keep a record of this. The more nectar producers during the peak nectar flow, the better. Your strong and robust colony will have the workforce to take full advantage of those blossoms.

Should your colonies be in an area with Witch Hazel you might see yellow pollen being brought in in early to mid-February. The first tree to bloom in our area are Silver Maples. Silver Maples may begin blooming as early as the 3rd week of February. It produces greenish pollen and is common in residential areas. Some other late winter sources of nectar and pollen can be the hardy perennial Helleborus, or Lenten Rose, which produces nectar and yellow pollen. Another is Snowdrops. Snowdrops are small bulbs producing white blooms that droop downward. They reach a height of about 7 inches and produce yellowish-orange pollen.

In the October 2025 Honey Plants column, I wrote about my plans to plant a half whiskey barrel with early blooming flower bulbs. I chose a giant Allum for the center, Crocus, and Grape Hyacinths. Early January I checked on my whiskey barrel and watered. The Crocus were trying to sprout and were peeking out of the soil, but I am not concerned. They will be fine and bloom when the time is right. In 2025, Robert Burns reported seeing Crocus blooming in late February. To keep the pesky squirrels out after planting, I placed a fire pit screen over the top.



Crocus bulbs emerging

2026 Funday and Queen Rearing Day

Joli Winer & Milisa Suckow, Special Events Coordinators (Funday)

Mark your calendars for two full days of learning! **Friday, June 5th**, for a Queen Rearing Day and **Saturday, June 6th**, for Funday.

Queen Rearing Day

Friday, June 5th, 2026, Douglas County Fairgrounds, Lawrence, KS

Dr. David Peck and David Burns will lead a queen rearing day. It will be both classroom time and time in the field. It will be around 6 hours including lunch. There will be an additional charge and number of participants will be limited. Stay tuned for more details.

2026 Funday

Saturday, June 6th, 2026, Douglas County Fairgrounds, Lawrence, KS

We are in the process of finalizing our presentations and activities so watch for updates at NEKBA.org and in this newsletter. We have confirmed our guest speakers and they are:

Dr. David Peck: Since 2024, Dr. Peck has served as the Academic Advisor for the Eastern Apicultural Society's Certified Master Beekeeper program. He now works for Betterbee. He develops and teaches classes on beekeeping and bee biology, bridges the gap between cutting-edge bee science and the beekeeping industry, and conducts research to improve our understanding of bee biology and to help keep honey bees healthy.

David Burns: In 2006, David began blogging and uploading beekeeping videos to YouTube. His YouTube channel has grown to around 154,000 subscribers. He also produces a weekly beekeeping podcast, writes a weekly column for Bee Culture Magazine, and wrote the book, *"Backyard Beekeeping: Everything You Need to Know to Start Your First Hive."* He became a Certified Master Beekeeper through the Eastern Apicultural Society (2010).

Dr. Judy Wu-Smart (Associate Professor & Extension Specialist):

Dr. Judy Wu-Smart received her PhD from the University of Minnesota with Dr. Marla Spivak. She has been the director of the University of Nebraska-Lincoln Bee Lab since 2015. At UNL, she and her team have been developing a robust pollinator health program for the Midwest region to help beekeepers, scientists, policy makers, and land managers understand the underlying stressors challenging bee health, such as improper management of pests and diseases and exposure to pesticides.

Parking your RV or travel trailers will be allowed on the Douglas County Fairgrounds. There are sixteen sites that have electricity (30 amps & 50 amps each), NO water, parked on gravel, and the cost is \$15 per night. There are eight sites that do NOT have electricity or water, parked on dirt/grass and there is no cost for these sites. You will need to make reservations for the sites. Contact Paige Vannicola at pvannicola@dgcoks.gov and provide her your arrival date and departure date. She will send you an electronic invoice that will need to be paid by credit card. If you have questions for Paige, she can also be reached by telephone at 785-832-5296.

We have reserved a block of rooms at Holiday Inn Express for Friday and Saturday nights, \$139 per night. The hotel is located at **3411 S.**

Iowa St, Lawrence. Telephone number is **785-749-7555**. The World Cup teams and visitors will be in the Kansas City area, including Lawrence, during this time frame so hotels may book up earlier or prices may be increased so we encourage you to make your plans earlier than usual this year. If you call in the code is Bee Keepers Meeting. The URL link: [Bee Keepers Meeting](#).

QR Code:



2026 Beekeeping Classes

Kristi Sanderson, Special Events Coordinator (classes)

The Beginning Beekeeping Class

Each Beginning Beekeeping class is a single day event. The class committee decided to try to jump on this a little earlier in the year. This will give people plenty of time to make equipment decisions, order bees, and plan where they want to place their hives. It should also give folks a couple of months to read and prepare for their new adventure. As always, this class is recommended for anyone in their first 1-3 years of beekeeping. There is always something new to learn and we'll try to present best practice beekeeping for our area.

Class Dates

February 14th

Dreher Bldg. Lawrence KS Douglas Co. Fairgrounds

March 14th

Wyandotte County Extension Office, KCKS

March 21st

Johnson County Extension Office, Olathe KS

Year 2 and Beyond Class

You've made it through your 1st couple of years, and now the real fun begins! Get ready for Year 2 and bee-yond!

Proposed Topics of presentation...

- Winter & Early Spring Inspections
- Spring Feeding
- Splits, Requeening & Swarming
- Fall Management
- Varroa Mites & Diseases
- Extracting Honey
- Producing liquid & comb honey
- What blooms in the fall

Class Dates

February 21st

Johnson County Extension Office, Olathe KS

Northeastern Kansas Beekeepers Assoc. Enrollment for 2026

Please include your selection and contact information below

2026 Year-2 & Bee-Yond Class (Feb.21, Saturday-Olathe, KS location)

Name(s) of those attending:

2026 Bee-ginning Beekeeping Class (Feb.14, Saturday – Lawrence, KS location)

Name(s) of those attending:

2026 Bee-ginning Beekeeping Class (Mar.14, Saturday-Kansas City, KS location)

Name(s) of those attending:

2026 Bee-ginning Beekeeping Class (Mar.21, Saturday – Olathe, KS location)

Name(s) of those attending:

Class registrations include annual NEKBA membership and delivery of the monthly newsletter via email.

Your contact information:

Name: _____

Address: _____

City, State: _____

Phone: _____

Email: _____

Enrollment at www.nekba.org via PAYPAL
and at <https://nekba.square.site> .

Credit or debit bank cards accepted.

Questions?: Kristi Sanderson Email:

sandersonk09@gmail.com Phone: 913-768-4961

Starting year 2-&-Beyond

This class is for you. Requeen, making splits, maintaining healthy hives. Anyone having hives less than 5 years will learn valuable information.

**February 21, 2026. Johnson County
Extension Office – Olathe, KS 11811 S
Sunset Dr, Olathe, KS**

X \$50 each = _____

*Beginning Bee Classes – three opportunities!
Everything you need to know to get started in
beekeeping in NE Kansas- BEST PRACTICES for our
area. Excellent for newer beekeepers with 3 years
of experience or less.*

**1) February 14, 2026 Douglas County
Fairgrounds 2110 Harper St, Lawrence, KS**

X \$50 each = _____

**Or 2) March 14, 2026, Wyandotte County
Extension Office – Kansas City, KS 1216 N
79th St, Kansas City, KS**

X \$50 each = _____

**Or 3) March 21, 2026, Johnson County
Extension Office – Olathe, KS 11811 S
Sunset Dr, Olathe, KS**

X \$50 each = _____

Total Submitted _____

Complete print form & mail check payment to:
NEKBA, Attn Robert Burns, Treasurer
7601 W. 54th Ter., Shawnee Mission, KS 66202

NORTHEASTERN KS BEEKEEPERS' ASSOC. 2026 MEMBERSHIP APPLICATION

NAME _____
ADDRESS _____
CITY _____ STATE _____ ZIP+4 _____
PHONE _____ EMAIL ADDRESS _____
I would like to receive the newsletter, The Buzzer, by email Yes _____ No _____

Membership Northeastern KS Beekeepers per year (July-Dec. \$12.50)	\$25.00	_____
Additional family members wanting voting rights \$1.00 per person	\$1.00	_____
Additional family member's name _____		
(Youth Membership (18 years of age or under)	\$12.50	_____
Membership for Kansas Honey Producers Association	\$25.00	_____
American Bee Journal (<u>discounted rate through association</u>)	1 Year \$33.25	_____
Bee Culture Magazine (or subscribe online at www.BeeCulture.com)	1 Year \$34.00	_____
Scholarship / Military/Veteran's Appr. Donation		_____
	Total	_____

Make checks payable to: NEKBA or Northeastern Kansas Beekeepers Assn.

Mail to: Robert Burns, 7601 W 54th Terr., Shawnee Mission, KS 66202 ph. 913-481-3504, rburnshoney@gmail.com

You may join, re-new, register, donate and pay online at www.nekba.org

MARKETPLACE

MENTORING-SWEET PRAIRIE HONEY

Need help with your hives? -Spring inspections, installing packages, making splits, queen evaluation, diagnosis of pests and diseases, mite monitoring and treatment, etc. I can help you with your beekeeping needs! I am a certified master beekeeper with 30+ years of beekeeping experience. I will leave you with a written course of action after our session at your hives. Call or text 913-768-4961 or email Kristi Sanderson at sandersonk09@gmail.com for pricing and appointment times.

BEEKEEPERS.COM

Beekeepers.com (Jordy's Honey Company) in Lenexa, KS. Beekeepers.com is your only local full-service beekeeping store. We carry a full line of Beekeeping Supplies, Protective Clothing, Bottles, Bee Packages, Nucs and Queens. Visit our website Beekeepers.com, to view our entire line of beekeeping supplies. You can also shop in-person at our store in Lenexa. We ship queens directly to YOU! Order at QueenBees.com. Queens available March - October. Our hours are Monday-Friday 9:00-4:00, Saturday 9:00-12:00. You can find our honey at The Overland Park Farmers Market. **Robert Hughes**, 14054 W 107th St, Lenexa, KS 66215, 913-681-5777 or email Info@Beekeepers.com

COTTIN'S HARDWARE & RENTAL

Cottin's stocks a full line of beekeeping equipment year-round including items manufactured by Harvest Lane Honey, Little Giant, and Bug Baffler. Products include hives, supers, frames, foundations, extractors, tools, and protective apparel. We also stock a full line of Home Brewing Mead Making supplies. Located in Lawrence, KS at 1832 Massachusetts Street (South of Dillon's). We are open Monday - Friday 7:30 am - 6:00 pm, Saturday 8:00 am - 5:00 pm, and Sunday 10:00 am - 5:00 pm. You can follow us on Facebook, Instagram and Twitter. Call us at 785-843-2981 or email us at hardware@sunflower.com

CEDAR RIDGE BEES

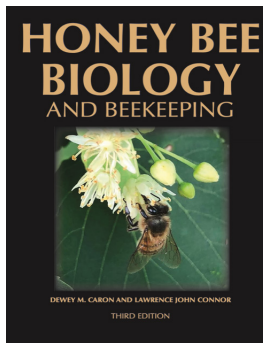
5 Frame Nucs for Sale. We are your local Premier Bee Products Dealer specializing in plastic foundation made entirely in the U.S.A. We sell bucket feeders and other bee equipment. Call or text Philip Knaus at 785-581-4216 or contact us at cedarridgebeehives@gmail.com - Check out our bees and products at www.cedarridgebees.com Cedar Ridge Bees 585 N 500 Rd, Overbrook, KS 66524.

T CREEK BEES AND HONEY – Tecumseh/Berryton, KS

Tecumseh Creek winds its way through the home yard lending its name to the brand. Located between Lawrence and Topeka, T Creek offers 5-frame nucs, online honey sales, custom honey packing, wholesale delivery to the Topeka / Lawrence area, 5-gallon buckets of honey, and drop-shipping wholesale service to rural grocery stores and agritourism destinations. Visit www.tcreekbees.com Email: tcreekbees@gmail.com or find the bees on Facebook. Order 2026 5-frame nucs by visiting the website and completing the nuc order form. Owner: Tim Urich. LLC in the State of Kansas and licensed by Kansas Dept of Ag.

Honey Bee Biology and Beekeeping, Third Edition Dewey M. Caron and Lawrence John Connor, \$90 postage included.

This book should stay on the dashboard of every beekeeper's truck. It's that good, and that necessary. Kim Flottum, Bee Culture. This comprehensive textbook easily replaces many beginner books while adding comprehensive details of bee biology essential to becoming a successful beekeeper and student of the honey bee. First released in 1999, Honey Bee Biology and Beekeeping is widely accepted as a major textbook of Apiculture (beekeeping). Beekeepers and bee clubs use it to teach other beekeepers. Universities use it to teach college students bee biology and beekeeping. It concentrates on the 'why', 'how' and 'when' of beekeeping. It explains bee and beekeeping basics in a manner meaningful to people who lack an extensive back-ground in biology. Yet it is not over-simplified, and provides a meaningful source of beekeeping information for the informed beekeeper. The Third Edition has been carefully edited, updated and expanded to 480 pages. New chapters have been added, as have colorful new graphics and photographs. The Glossary has also been expanded.



Wicwas Press LLC Kalamazoo, MI 49001 - www.wicwas.com

The Association does not endorse nor evaluate the advertisements, products, or services offered in the Buzzer.

Northeastern Kansas Beekeepers Association
Robert Burns, Treasurer
7601 W 54th Terr
Shawnee Mission, KS 66202-1129

Address Service Requested

Meeting

Monday, Jan 26th, 2026 - Johnson County Extension Office

The Northeastern Kansas Beekeepers' Association

Membership is open to anyone interested in bees or bee culture. Dues are \$25.00 per calendar year (December 31-December 31) for the first in the family joining. Those joining in July or later in the year may pay \$12.50 for ½ year. Additional members of a family wanting voting privileges shall be assessed dues at \$1.00 per year. Youth memberships (18 years of age and younger) are \$12.50 per year. Please submit new memberships and renewals to the treasurer or on-line at www.nekba.org.

The Bee Buzzer is the official publication of the Northeastern Kansas Beekeepers' Association, Inc. and is published monthly. Commercial ads are accepted in the newsletter for a fee; non-commercial ads by paid members are accepted & are free.

The library of the association is free to all members. Books may be checked out at the meetings and kept for a period of 30 days. The bee publications, *The American Bee Journal* and *Bee Culture* can be subscribed to through the treasurer or on-line. The American Bee Journal is offered at a discount through the Association only.

The Association meets each month, generally on the third Monday at 7:00 p.m. except during the months of January and July. This is a non-profit organization; elected officers serve without pay. Everyone is invited to attend the meetings. Check *The Bee Buzzer* or website at www.nekba.org each month for the actual date, time, and location. If the weather is bad, call an officer or check the website to find out if the meeting will be held or canceled.

2026 Officers

President: Jessica Popp-Mullen 7427 Beverly St, Overland Park, 66204	twohiveshoneyco@gmail.com	816-804-5972
1st VP (Program Chair): Yana MaGruder 5885 W 201st St, Stillwell, KS 66085	yana.magruder@gmail.com	707-889-4740
2nd VP (Librarian): Michael Hewitt 9221 SE Berryton Rd, Berryton, KS 66409	garlicranch69@gmail.com	785.230.0827
3rd VP (Honey Plants): Jo Patrick 611 E Sheridan St, Olathe, KS 66061	waterworksparkhoney@gmail.com	913-645-8497
Secretary: Elaine Ellenz 17650 W 113th St., Olathe, KS 66061	elaineellenz@gmail.com	913-515-1607
Treasurer: Robert Burns 7601 W 54th Terr, Overland Park, KS 66202	rburnshoney@gmail.com	913-481-3504
Youth Scholarship Chair: Jim Putnam 308 Stetson Cr, Lawrence, KS 66049	jimputnam996@gmail.com	785-917-0384
Military/Veteran Appr. Liaison: Buck Bradley 11 E 900th Rd, Baldwin City, KS 66006	buckusmc00@hotmail.com	785-248-1005
Editor: Nick Bretz 18641 178th St, Tonganoxie, KS 66086	nick.bretz@gmail.com	816-739-4146

Special Events Coordinators

Pos #1: Beekeeper Classes: Kristi Sanderson 1252 E Frontier Ln, Olathe, KS 66062	sandersonk09@gmail.com	913-768-4961
Pos #2: Bee FunDay Co-Chair: Joli Winer 19201 S Clare, Spring Hill, KS 66083	heartlandhoneyks@gmail.com	913-856-8356
Bee FunDay Co-Chair: Milisa Suckow 11677 S Barker Rd, Olathe	milisasuckow@gmail.com	816-820-7923
Web Support Robert Burns 7601 W 54th Terr, Overland Park, KS 66202	rburnshoney@gmail.com	913-481-3504

Visit on-line at www.nekba.org. Save time. Join, re-new, or register.