

# the fourth day newsletter



## Women's Walk #112

Oct 8 - Oct 11  
**Aleta Fountain - LD**  
**Rev. Glen Pugh - SD**

### Times To Remember

**Wed 7pm Sendoff**  
**Fri 7pm Candlelight**  
**Sat 7am Serenade**  
**Sat 4pm Closing**

### IN THIS ISSUE

A Message from Lay Director of Walk #112	Page 1
A Message from Spiritual Director of Walk #112	Page 2
Pilgrims of Walk #112	Page 3
Team Roster	Page 4
Support Team / Work Areas	Page 5
A Fourth Day Message	Page 6
CAEC Board	Page 7

October 2008



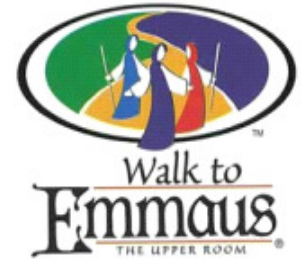
*They asked each other, "Were not our hearts burning within us while he was talking to us on the road, while he was opening the scriptures to us?" Luke 24:32*

### A WORD FROM WALK #112 LAY DIRECTOR

Wow! Can you believe fall is already here and Walk #112 is upon us? Where did the year go? This has been a very fast year for our family. It has been a year of challenges and trials, but we have also had the joy of seeing God's faithfulness at work in our lives. For me personally, it has been a time of growth spiritually as I have faced my second experience with breast cancer and chemotherapy. My husband Terry faced a serious staph infection and was hospitalized. My mother and nephew had serious accidents this year and were also hospitalized. Obviously God has been writing my Perseverance talk for a while! Several of my good friends reminded me about having mustard-seed faith and how we can move mountains with God's help! I can't wait to see His mighty power, feel His presence and see His love reflected on the faces of the pilgrims. I am humbled and overjoyed to be serving as the Lay Director for Walk #112. I want to thank all of those sweet servants who have said "Yes" to Him and are serving on Walk # 112. It seems not so long ago that I "walked" as a pilgrim and it was such blessing for me. I was facing some difficult days back then and it was a wonderful respite from my crazy world. My original walk gave me a passion to love and serve others the way that I had been loved and served. I can't think of a greater blessing than to serve the ladies of Walk #112 in the same way.

I am thankful to my Emmaus Community for all of the love and support that was shown to me during this last year. You all are truly the Body of Christ in action! I am confident that God will continue to share His love through you to the pilgrims of Walk #112. To God be the glory!

Aleta Fountain  
 CAEW #37  
 Table of Anna



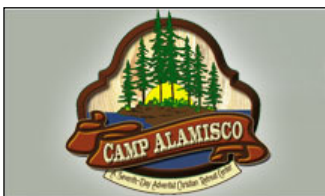
### Upcoming Dates To Remember

- Men's Emmaus Walk #113  
 Oct 23- 26 Thurs - Sunday  
 LD: John Duncan  
 SD: Tony Hughes
- Women's Emmaus Walk #114  
 Nov 12 - 15 Wed - Saturday  
 LD: Veda Johnson  
 SD: Luane Wages-Smith

*For additional 2008 Emmaus and Chrysalis information and updates, periodically refer to website ([www.caew.org](http://www.caew.org)) which is being updated and changed to benefit the entire community. Don't forget, God equips and gives you the means and strength you need to serve, and bring others to Christ.*

### 2009 Dates to Remember

- Men's Walk #115 Jan 28 - Jan 31
- Women's Walk #116 Feb 26 - Mar 1
- Men's Walk #117 Mar 25 - Mar 28
- Women's Walk #118 April 1 - April 4
- Men's Walk #119 May 13 - May 16



**In Case Of Emergency**  
**Camp Alamisco**  
**256-825-9482**



There is a great story about a family who brought in two cocoons that were about to hatch. They watched as the first one began to open and the butterfly inside squeezed very slowly and painfully through a tiny hole that it chewed in one end of the cocoon. After lying exhausted for about ten minutes following its agonizing emergence, the butterfly flew out the open window on its beautiful new wings.

The family decided to help the second butterfly so that it would not have to go through such an excruciating ordeal. So, as it began to emerge, they carefully sliced open the cocoon with a razor blade, doing the equivalent of a Caesarean section. The second butterfly never did sprout wings, and in about ten minutes, instead of flying away, it quietly died.

The family asked a biologist friend to explain what had happened. The scientist said that the difficult struggle to emerge from the small hole actually pushes liquids from deep inside the butterfly's body cavity into tiny capillaries in the wings where they hardened to complete the healthy and beautiful adult butterfly.

The lesson is simple - WITHOUT THE STRUGGLE, THERE ARE NO WINGS

One of the wonderful things about the Emmaus Walk is that it recognizes the value of our struggle with God. We know as we gather together that none of us are where we need to be and that God in His infinite wisdom goes before us. Each time I work on a Walk it nourishes my soul to see people connecting with God in a way that they have not done before. As we prepare for Walk #112, let us lift up each person, praying that they will grow in God's grace and mature in the faith so that they may experience the abundance of life that God promises us.

Glen Pugh

Blue Lake Walk #45

Table of Peter



And I am sure that God, who began the good work within you, will continue His work until it is finally finished on that day when Christ Jesus comes back again.

Philippians 1:6 NLT

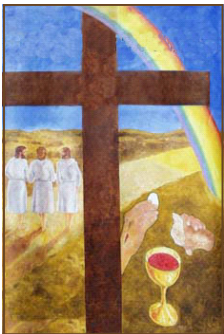
## Walk #112

*“As they talked and discussed these things, Jesus himself suddenly came and began walking with them.”*



# Central Alabama Emmaus Walk

*To renew the church as the body of the risen Christ in the world through development of leaders and renewal of Christians as faithful, committed disciples of Jesus Christ.*



In Case Of Emergency  
Camp Alamisco  
256-825-9482

Name			Sponsor(s)
Jan Baker	Selma AL	Church Street UMC	Tony Hughes, Jr.
Christa Barclay	Wetumpka AL	Cain's Chapel UMC	Wendy Anderson
Jane Bibler	Ramer AL	LaPine Baptist	Betty Paulk
LaDonna Brendle	Montgomery AL	Frazer UMC	Michelle Nix
Debra Broadhead	Prattville AL	First Baptist	Jack Schofield
Kori Caldwell	Tallassee AL	East Tallassee Baptist	Veronica Chesnut
Lorra Casson	Auburn AL	Lakeview Baptist	Michelle Granberry
Stephanie Conner	Montgomery AL	Elmore UMC	Terri Sasser
Myrna Diamond	Montgomery AL	First Christian	Susan Diamond
Gena Dismuke	Montgomery AL	FUMC Montgomery	Charles & Susan Stover
Allyson Dozier	Auburn AL	Auburn UMC	Veronica Chesnut
Denise DuCote	Montgomery AL	St. James UMC	Sarah Olsen
Natalie Fisher	Montgomery AL	Frazer UMC	Susan Fisher
Kimberly Frederick	Hope Hull AL	Hope Hull UMC	Steve Spining
Mary Jo Gibbs	Deatsville AL	Elmore UMC	Terri Sasser
Carolyn Hagler	Monroe GA		Jeanne Tepper
Martha Harrelson	Dadeville AL	New Concord Baptist	Gene Blair
Melissa Harville	Ramer AL	Mt. Zion Baptist	Betty Paulk
Stephanie Henderson	Millbrook AL	FUMC Millbrook	Lori Starr
Chanda Houts	Tallassee AL	Frazer UMC	Mike & Donna Wells
Joyce Howell	Selma AL	Westwood Baptist	Kathy & Shelton Nichols
Jessica Hubbard	Montgomery AL	Christian Life Church	Natasha Lumpkin
Leigh Kemp	Opelika AL	Trinity UMC	Jackie Marsh
Faye McFarland	Auburn AL	Parkway Baptist	Sandra Many
Anna Miller	Wetumpka AL	Hunter Hills COC	Wendy Anderson
Angie Mims	Montgomery AL	Frazer UMC	Heather Thornton
Lu Missildine	Tallassee AL	FUMC Tallassee	Karl Ames
Flora Moss	Notasulga AL	Beulah Baptist	Veronica Chesnut
Laura Norton	Selma AL	Selma First Baptist	Lynn Kopp
Julie Perryman	Auburn AL	Auburn UMC	Beth Howell
Mandy Reeves	Selma AL	Crosspoint Christian	Felix Reeves
Terri Rubio	Opelika AL	First Baptist Opelika	Merri Lynn Gregory
Tennie Sanford	Alex City AL	Hillabee Baptist	Danny Sanford
J.C. Schofield	Prattville AL	FUMC Prattville	Jack Schofield
Bonnie Smedley	Selma AL	Ocmulgee Baptist	Carol Harris
Jennifer Smith	Jackson's Gap AL	Flint Hill UMC	Duane Skarecky / Rita Smith
Kathy Spitaleri	Montgomery AL	Frazer UMC	Kathy Bonds
Teresa Stone	Selma AL	Ocmulgee Baptist	Carol Harris
Jennifer Thurow	Auburn AL	Auburn UMC	Haywood Dowdle
Ida Turner	Tallassee AL	FUMC Tallassee	Leslye Ames
Dilly Wade	Jackson's Gap AL	Flint Hill UMC	Keith Haggerty
Dana Walters	Tallassee AL	East Tallassee Baptist	Ty Ashe

# Team Roster - Women's Walk #112

## Lay Director

Aleta Fountain

## Spiritual Director

Rev. Glen Pugh

## Assistant Spiritual Directors

Rev. Jim Sasser  
Rev. Suzie Beeson  
Rev. Jamie Barkley  
Rev. Larry Anderson

## Assistant Lay Directors

Linda Brewer  
Stacy Deavor  
Wendy Rajan  
Martha Smith

## Table Leaders

Judy Osborne  
Angie White  
Donna Wells  
Patti Barnes  
Connie Parr  
Lynnie Kopp  
Gail Hawkins

## Assistant Table Leaders

Lori Starr  
Michelle Templeton  
Lori Schoonover  
Kathy Nichols  
Brenda Wheat  
Wanda Ryals  
Betty Jo Landrum



Agape Needs: 72 of Each

## Media

Rachel Colley

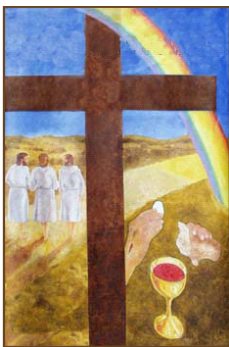
## Music

Chrystal Strickland  
Marian Woodman

## Board Representative

Terri Sasser

He is the image of the invisible God, the firstborn over all creation.  
Colossians 1:15



For more Emmaus Community news and information, go to

[www.caew.org](http://www.caew.org) or [www.eacluster.com](http://www.eacluster.com)

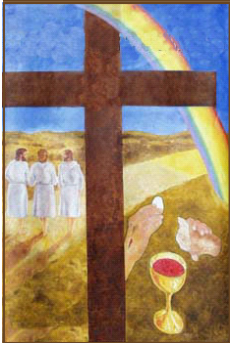
October  
2008



## Support Team / Work Areas - Women's Walk #112

# Central Alabama Emmaus Walk

To renew the church as the body of the risen Christ in the world through development of leaders and renewal of Christians as faithful, committed disciples of Jesus Christ.



WORK AREA	CHAIR / CO-CHAIR	WORKERS
<b>AGAPE</b>	Dru Washburn	
<b>BOOK COVERS/BOOK BAGS</b>	Sid Utsey	
<b>BED TAGS</b>	Jorie Welch	
<b>BOOK TABLE</b>	Jorie Welch	
<b>CANDLELIGHT</b>	Thina Biblis / John Biblis	
<b>ENTERTAINMENT</b>	Shirley Esco	Elmore County Cluster
<b>FOURTH DAY SPEAKER</b>	Darlene Caver - Valley Grande - CAEW #92	
<b>GREETERS</b>	Elaine Jimmerson / GRITS Reunion Group	Terrie Lawrence, Jennifer Stephens, Charolette Largen, Susie Litkenhous and Nonet Reese
<b>HOUSING / REGISTRATION</b>	Pam Barnt / Fred Bennett & Mo Moseley	Ed Williams
<b>LOGISTICS</b>	Mac Lovelady	
<b>FOOD PREPARATION</b>	Don Large	
<b>MEAL SERVICE</b>	Todd Deavor / Rita Henson Carswell	
<b>REFRESHMENTS</b>	Cindy Barkley	
<b>FRIDAY NIGHT PARTY</b>	Faithful Hearts Reunion Group	
<b>PHOTOGRAPHY</b>	Ken Marsh	
<b>SERENADE</b>	Jon & Kammi Waggoner	
<b>SPONSORS' HOUR</b>	Jennifer Dingman / Jennifer Canon	
<b>72 HOUR PRAYER VIGIL</b>	Allen & Linda Brewer	
<b>SPEAKERS' PRAYER CHAPEL</b>	Steve Kopp	
<b>WORSHIP</b>	Hope & Jeff Brackin	



### Celebrating the Commonplace



*"The bread that we break is a communion (koinonia) with the body of Christ. The fact that there is only one loaf means that, though there are many of us, we form a single body, because we all have a share in this one loaf."*

1 Corinthians 10:16-17

## the fourth day

I LOVE THE MOUNTAINS! I am especially partial to The Great Smokey Mountains of Tennessee. It is the "homeplace" for a new beginning in life together with my friend, partner-in-ministry, and husband Dee. While shopping in Gatlinburg, early during our stay, we allowed ourselves to be drawn in by the sights and sounds of a little Christmas shop. As we enjoyed looking at the shop's many treasures, the most beautiful arrangement of "Amazing Grace" broke in, capturing our attention. We forgot all about the Christmas treasures, knowing only that we had to have this wonderful music. We purchased the CD, "State of Grace," having no idea that it would become a part of our worship and unforgettable communion with God as we traveled the roads in the park each day. We were like dry sponges soaking in every part of God's awesome creation: the mountain laurel, the rushing water, the tree-canopied roads, the animals, the vistas, the fields and the coves. We played like children in the rock bed streams, gathering beautiful rocks to bring back to Kentucky with us. We made the trek up Clingman's Dome to take in the greater view of the mountains and valleys. God was filling our senses with his amazing grace.

I DID NOT WANT TO LEAVE! I cried the day we loaded everything up in the car to head back to the real world: to the hard work of blending two families, to the responsibilities of serving two churches while completing seminary classes. God had been so good to us, making a way for us to extend our stay by two nights, but it was time to leave the mountains.

Many of us may have had mixed feelings about departing from camp after our 72 hour walk. Perhaps we too wished to stay on the mountain where we realized the love of God in such sweet communion through His servants. Perhaps our fourth days held challenges we were not ready to face. But I pray that we have all come to realize that the mountain-top experiences sustain us for the journey in the valley; that our God is as present with us in the valley as He is on the mountain. Amen? Amen!

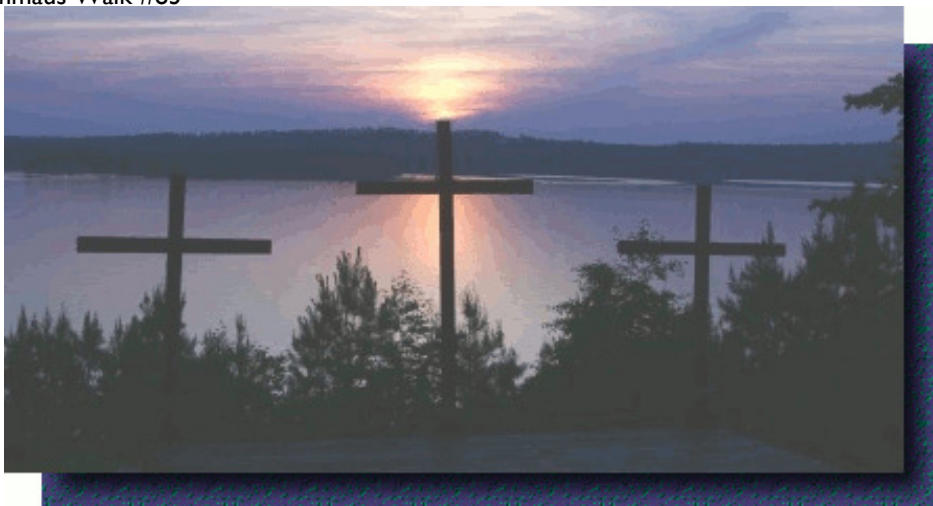
All I have to do is load "State of Grace" in the CD player and my senses are filled once again with the goodness and grace of our God. Communion with God is available with every breath as I seek Him in study and prayer; as I serve Him in my family, local church and Emmaus community; as I navigate my way back to the "homeplace."

DeColores!

Bridget E. Dowdy

Pastor, Trinity UMC

AL Emmaus Walk #83



October  
2008



"As the Father has loved me, so have I loved you. Now remain in my love."

John 15: 9



For name badges, email

Mary Mowery at

[mary.mowery@eamc.org](mailto:mary.mowery@eamc.org)



### Christian Action

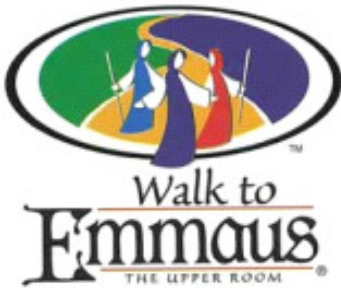
- ◆ Make a friend
- ◆ Be a friend
- ◆ Bring a friend to Christ

**Address, contact phone, or email changes?**

Help keep your information updated. Send any changes or updated information (with your original walk # and location) to:

[sdutsey@aol.com](mailto:sdutsey@aol.com)

If you don't have email or computer access, call anyone in the Community to assist you with any update needed to your current address, phone, or other information.



**Sponsorship is:**

- 1. Your first act of Agape before a Walk ever begins**
- 2. Your sacrificial love on behalf of your pilgrim**
- 3. Your part in developing the foundation for a healthy, effective Emmaus Movement, which results in the renewal of the church**

**October 2008**



<b>Emmaus Work Area</b>	<b>2008 Community Board Representative</b>
72 Hour Prayer Vigil	Mike Wells
Agape	Linda Hines Hornsby
Book Table	Steve Kopp
Candle Light	Christi Hall
Food Preparation	Robert Beers
Greeters	Roger Lien
Housing and Registration	Roger Lien
Logistics	John Duncan
Meal Service	Allen Brewer
Music & Media	Chrystal Strickland
Photography	Jim Sasser
Refreshments	Randy Lovelady
Serenade	Chrystal Strickland
Speakers' Prayer Chapel	Mike Wells
Sponsors' Hour	Jack Moseley
Supplies	Aleta Fountain
Worship	Steve Kopp
Registrar - Men's	Jim Snyder
Registrar - Women's	Mo Moseley
Community Spiritual Director	Charles Cummings
Community ASD	Glen Pugh
Community Lay Director	Christi Hall
Community ALD	Aleta Fountain
Community Treasurer	Chris Hines

