

Maskoke Farm
Talbot County GA
+328.146 (from deeds/plats)
Parcels 007 16203, 005 12440, 005 12440 B

Legend

tr_roads

Descrip

Creek

Drain

Primary Road

Secondary Road

Boundary +/-

Label

Lake, 7.4ac

Key:

Strata 1 - Mostly +-2005 Upland Planted Loblolly
Needs 1st thinned

Strata 2 = Mostly Mature Planted and Natural Loblolly
Ready for another thinning or clearcut

Strata 3 = Mostly Mature Upland & Bottom Oak, Mixed
Hardwood, some Pine. Fully stocked. Much
is suitable for pine plantations.

0 330 660 1,320 Feet

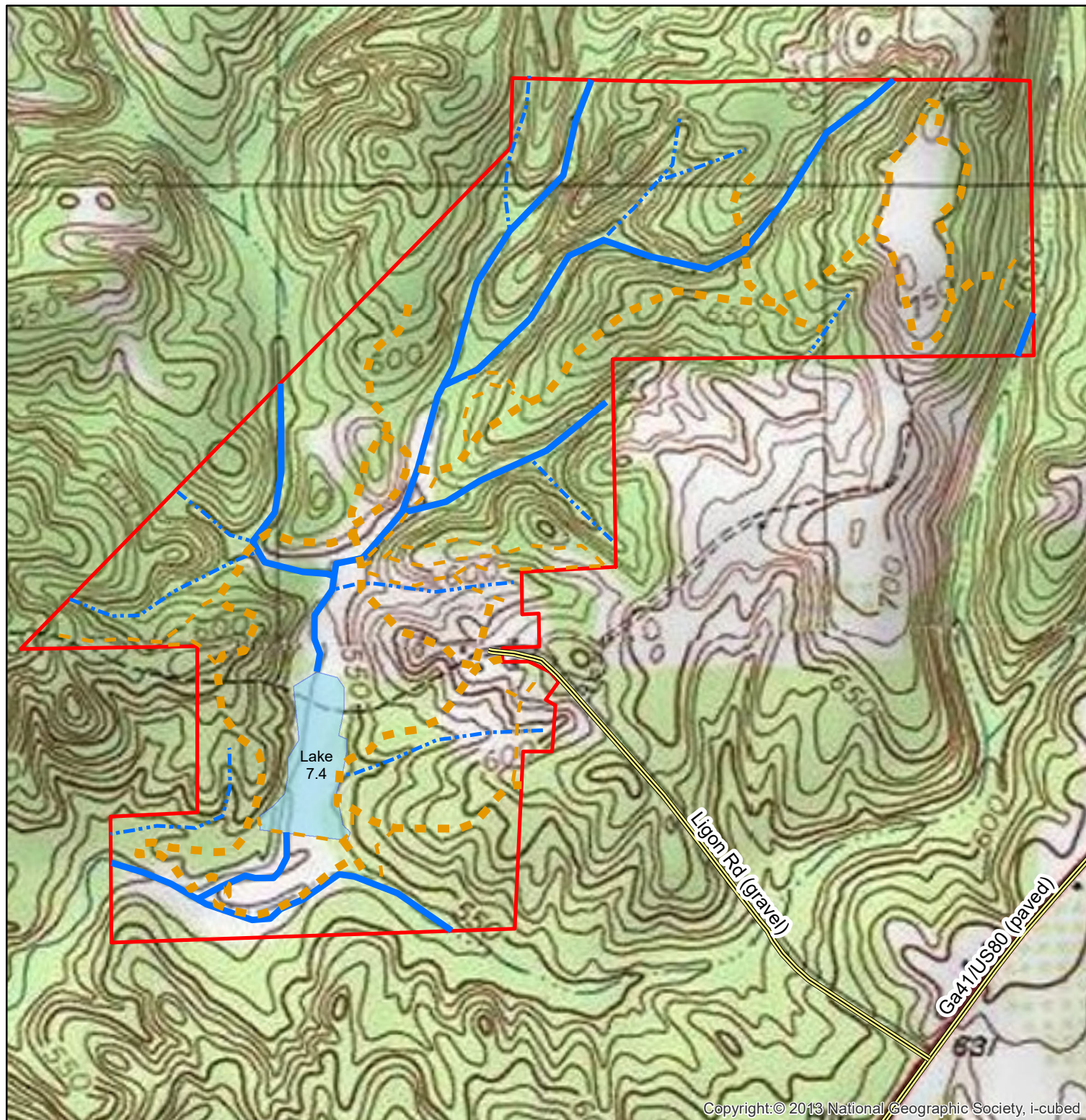
1:10,000 1 in = 833.3 feet

Date: 7/22/2019



www.matreforestry.com
Albany GA 229-639-4973

Disclaimer: Map boundaries, acres, timber descriptions,
and all other map data is not guaranteed. The map is not
a survey plat. Mapped in ArcMap 10.5 GIS mapping software.



Copyright: © 2013 National Geographic Society, i-cubed