

iEnergy Series

SEM100/SEM300



SMART ELECTRICITY METER

- *Single Phase/Three Phase*
- *5 year warranty*
- *Class 1 accuracy*
- *Direct or CT operation*
- *Pulse/M-Bus /MODBUS Interface*
- *Compliant with DIN Standard*
- *Wide range current measurement 5(100)A for direct connection*
- *Comply with EN61036/IEC62053-21*

The SEM100/300 are the newest additions to USonic Metering iEnergy Series electricity meters.

These smart meters are an ideal solution for accurately monitoring your consumption. When coupled with USonic Metering's AMR solution. The electricity meters offer a direct path to better energy management.



**SMART ELECTRICITY
MEASUREMENT**

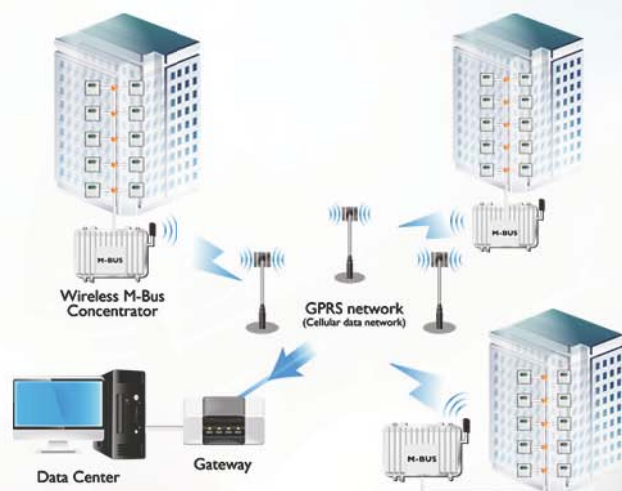
- **RESIDENTIAL**
- **COMMERCIAL**
- **AMR/AMI**

FEATURES AND BENEFITS

The SEM100/300 Series smart electricity meters of the iEnergy Series smart electricity meters offer a reliable energy measurement solution for a reliable energy m both single phase and three phase circuits. These meters are designed for residential and commercial energy consumers tied to distribution networks. The SEM100/300 meters have a variety of output options, such as M-Bus, MODBUS, Pulse, RF, GSM and PLC, thus making them ready for AMR/AMI system integration. Furthermore, the meters are manufactured in accordance with relevant DIN/IEC and MID standards, and are an ideal economic solution for your electricity consumption monitoring and billing purposes.

With USONIC METERING's SEM 100/300, you can:

- Measure active and reactive energy with high accuracy for single phase and three phase applications.
- Achieve excellent long-term stability as the unit is designed for DIN, IEN and EN standards.
- Communicate using a variety of output options such as M-Bus, MODBUS, Pulse, RF and more.
- Easily read the large, clear LCD display.
- Promote accountability and conservation by integrating into USonic Metering's AMR/AMI utility metering solution.
- Measure usage at very low starting currents, making these meters well suited for photovoltaic energy systems as well as general use.
- Adapt to system configurations with a user friendly reading, setting and programming tool.
- Remain flexible with a meter manufactured for connection current up to 100A or connection with CT 1.5(6)A.
- Deploy a meter featuring Baud Rates selectable among 300, 2400, and 9600.



The utility metering solution maximizes your investment and allows you to remain responsive with a system geared toward quick and reliable resource management.

About USonic Metering

USonic Metering is a global leader in flow and energy management solutions. Through continuous innovation, we transform complex cutting-edge technologies into affordable, reliable solutions for accurate flow and energy measurement. USonic Metering offers water, heat, electricity and gas meters as well as AMR/AMI solutions. To find out how we can help today, please tell us about your application.