



Protecting Our Members: March is Fraud Prevention Month

Fenn REA stands vigilant in safeguarding our members against fraudulent activities. With March being recognized as Fraud Prevention Month, it's crucial to reinforce our commitment to your security.

We want to remind all our valued members that Fenn REA, ATCO, and Battle River Power Coop will only reach out to you through official channels. This includes verified phone numbers and email addresses. Any unsolicited communication claiming to be from us, especially those requesting personal or financial information, should be treated with caution.

It's essential to remain vigilant and report any suspicious activity to us immediately. By staying informed and proactive, we can work together to keep our community safe from fraud.

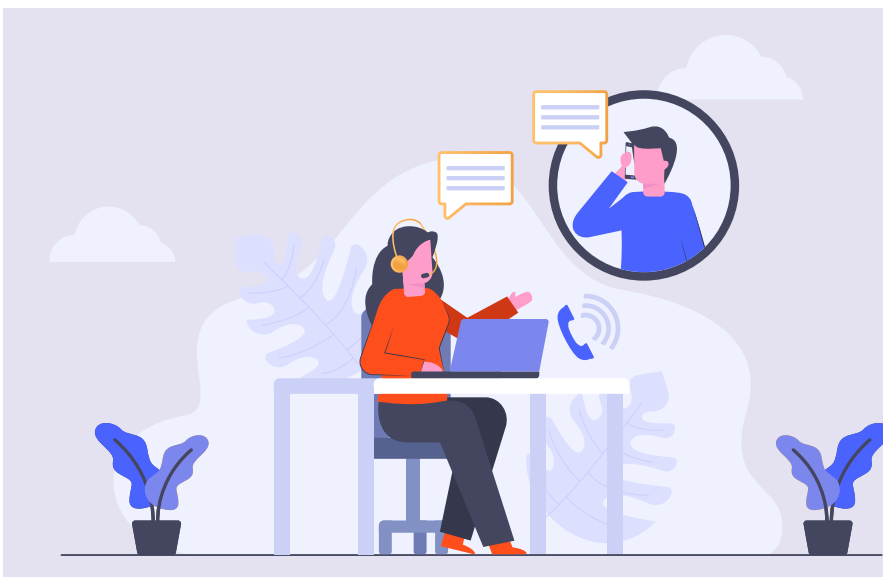
At Fenn REA, your security is our top priority. Let's continue to stand united in protecting each other against fraud. Together, we can create a safer and more secure environment for all.



Update Your Contact Information!

Has anything changed recently? Whether it's your address, phone number, or email, it's important to keep your information up to date. Don't miss out on important updates from Fenn REA!

Simply contact Battle River Power Coop with any changes, and we'll ensure your records are current. Stay connected and informed with Fenn REA.



For power outages, emergency power troubles and service requests, contact the distribution system operator for FENN REA: **ATCO Electric**
Phone toll-free: 1-800-668-2248

FENN REA
Box 31, Fenn, Alberta T0J 1K0
Phone: c/o Philip Jarmin,
1-403-740-9384
Email: fennrea@gmail.com
www.fennrea.com

Battle River Power Coop
Member Care & Billing
Box 1420, Camrose AB T4V 1X3
Phone toll-free: 1-877-428-3972
Email: brpc@brpower.coop
www.brpower.coop

Managing Vegetation with Proper Planting

Trees are not only a beautiful addition to any landscape but also play a vital role in providing shelterbelts and enhancing aesthetics. However, when it comes to power lines, trees can pose serious hazards.

Trees situated too close to power lines can lead to power outages or interruptions when branches make contact with overhead lines, potentially causing fires due to electrical arcing. Additionally, proximity to trees can pose a significant danger to individuals, as electricity can jump from a tree to a person, especially if the tree is wet.

Vegetation management is crucial for maintaining a safe and reliable distribution system. While ATCO Electric bears the primary responsibility for managing vegetation, members also play a role in deciding where and what to plant in relation to power line locations.

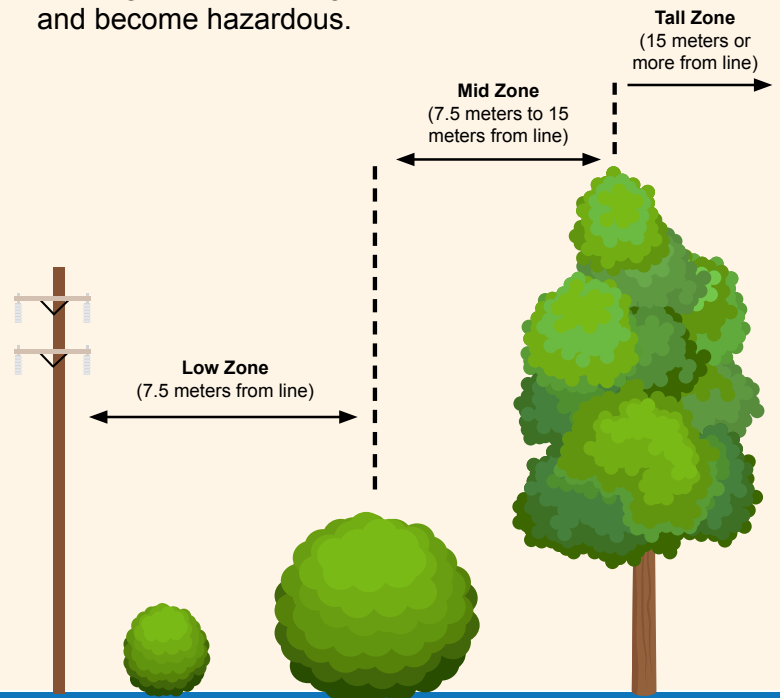
Before embarking on any planting project, it's imperative to contact Utility Safety Partners (formerly Alberta One-Call at 1-800-242-3447) to have utility lines marked. Exercise extreme caution when digging around electrical infrastructure to avoid any contact.

It's essential to understand that having power lines on or near your property doesn't mean you can't plant trees. However, it's crucial to research or consult with experts to determine the mature height and width of trees to ensure they won't interfere with power lines.

By practicing proper planting techniques and understanding the potential risks associated with trees and power lines, we can maintain a safe environment for everyone while enjoying the beauty of trees in our landscape.

The following guidelines will assist in ensuring your trees and powerlines don't meet!

- Nothing should be planted closer than 5 meters (roughly 16.5 feet) from the base of a power pole.
- Trees or shrubs planted closer than 7.5 meters (24.5 feet) should be low-growing varieties (e.g., berry hedges, roses, honeysuckle, etc.).
- In the mid-zone, lilac and cherry trees could be potential choices.
- Tall trees (spruce, birch, pine, etc.) should be planted at least 15 meters (just over 49 feet) away from powerlines.
- If you have a secondary line connecting your home or farm to a power line, avoid planting trees that will grow into the line and become hazardous.



Rate of Last Resort (RoLR)

The Rate of Last Resort (RoLR) is a fixed monthly rate set at \$0.13500 per kWh until the end of December 2026. Detailed information on the RoLR is available on: www.fennrea.com.

Members are free to purchase natural gas services or electricity services from a retailer of their choice. For a list of retailers, visit ucahelps.alberta.ca or call 310-4822 (toll free in Alberta).