

Avalanche Home Series





About us

The Titan Homes facility in Weiser, Idaho offers one of the most diverse product offerings of any manufacturer on the West Coast - from park model homes to residential homes (HUD and Modular) to commercial buildings. We have a home for everyone, no matter what stage of life you're in. We go to great lengths to provide our customers with innovative designs and a vast selection of home décors, as well as the ability to customize plans to fit the needs and demands of any lifestyle.

Confidence and Trust

Our original manufacturing facility in Weiser, ID opened in 1968. Throughout the past 46 years, we have built thousands of homes for families throughout the West. We currently operate two manufacturing centers with one facility being dedicated strictly to specialty products such as multi-family units, commercial buildings, man camp housing and multi-level buildings such as hotels and apartments.

Experienced Workforce

We have a very skilled and established workforce and management team with years of experience. Our dedication to quality and customer satisfaction has allowed us to attract and maintain loyal customers.

Quality You Expect

Every home we build is professionally designed and engineered. Built by craftsmen in a controlled factory environment, we continually inspect our work at every phase of the home construction process to ensure our rigorous quality standards are met. We believe that to build the best, you have to use the best. We use some of the most trusted brand names in home construction such as Whirlpool®, Congoleum®, Owens Corning® and Georgia-Pacific. These building material suppliers along with many others share our dedication to quality components and home construction.

All of our homes receive a one year warranty on all structural, electrical, heating and plumbing components. Our straight forward warranty plan is hassle-free with no deductibles or service charges to the homeowner. We are committed to our customers and the home-buying experience.

MODEL 4523A

1387 sq.ft.
3 Bed-2 Bath
26'-8" x 52'

EXTERIOR 1



* Shown as Standard Plan

EXTERIOR 2



* Shown with Optional Family Room A

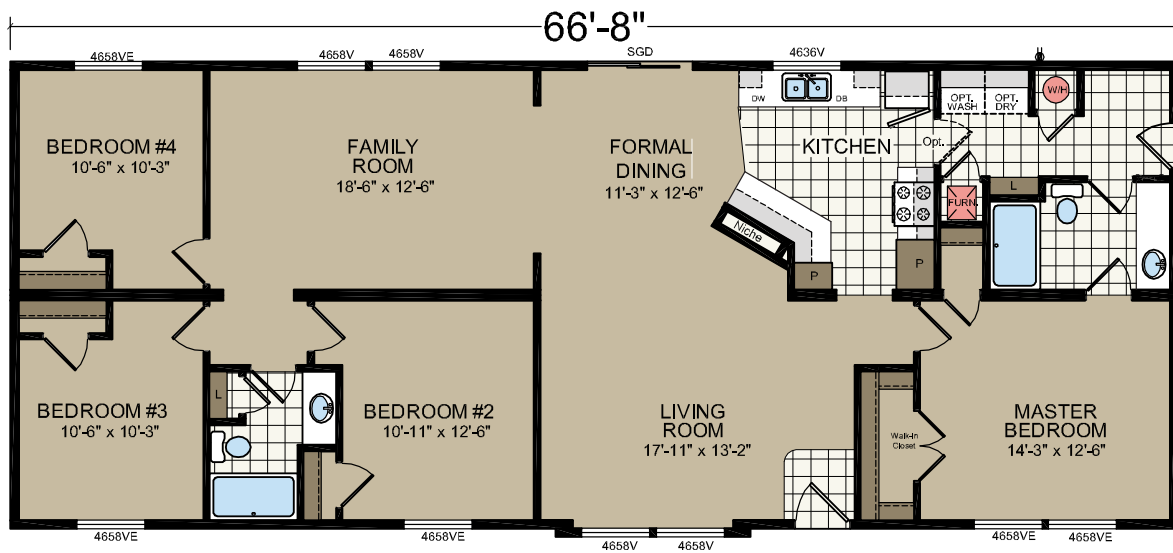
** Changes to 4 Bedroom | 1778 Sq. Ft. | 66'-8"x 26'-8"

EXTERIOR 3

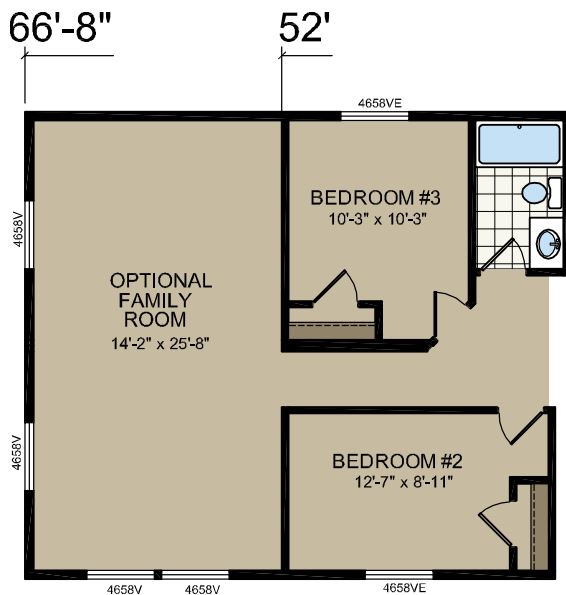


* Shown with Optional Family Room B

** Changes to 4 Bedroom | 1778 Sq. Ft. | 66'-8"x 26'-8"

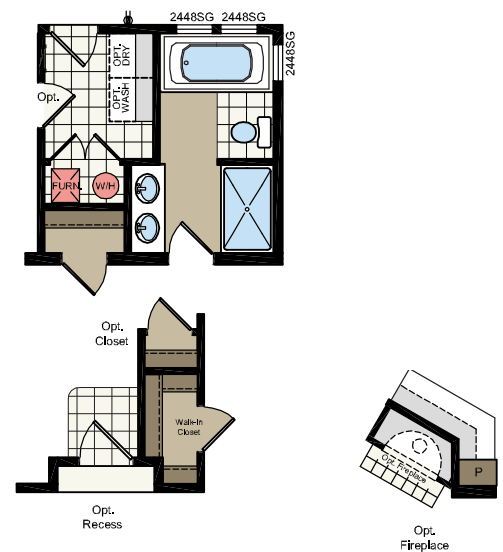


OPTIONAL FAMILY ROOM A



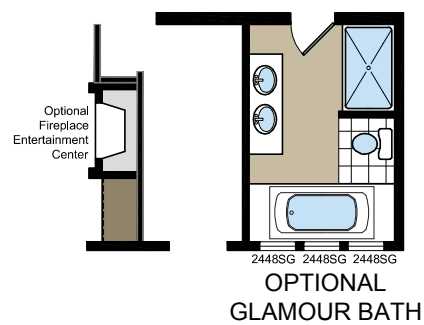
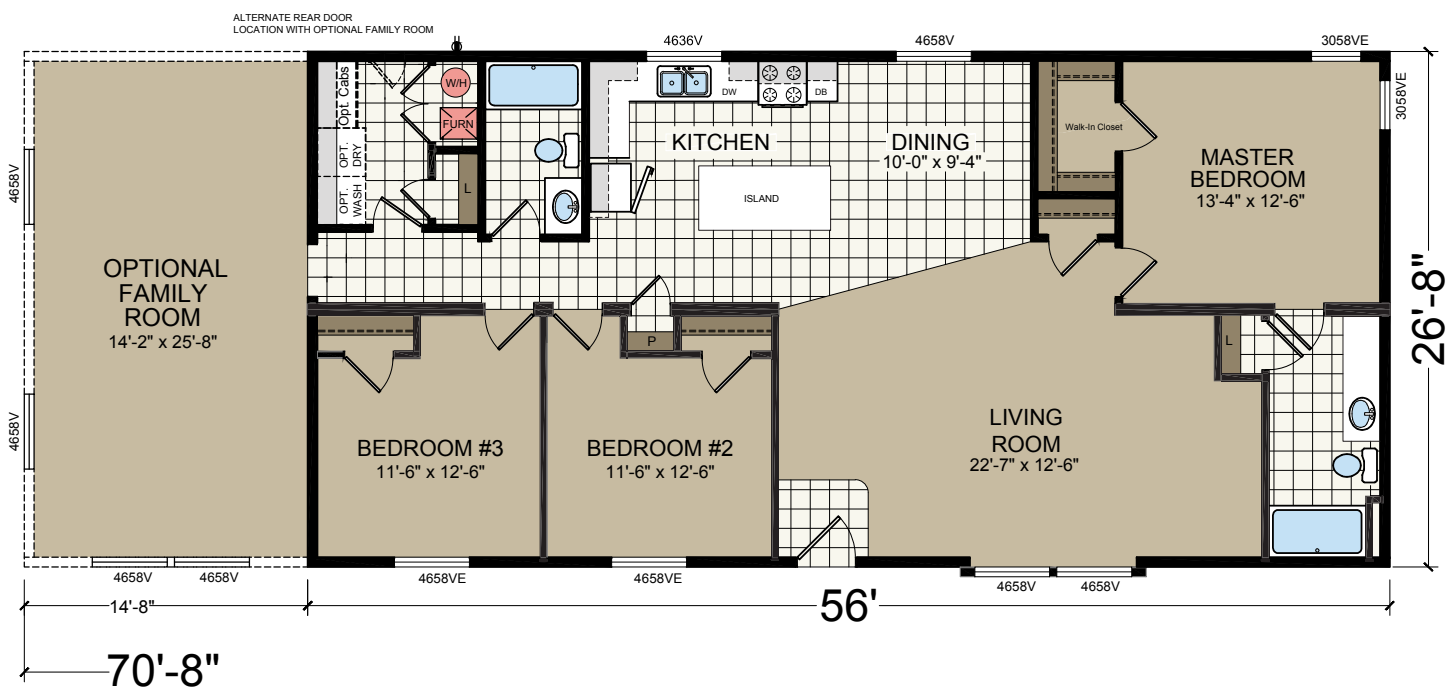
OPTIONAL FAMILY ROOM B

OPTIONAL GLAMOUR BATH



MODEL 4563R

1494 sq.ft.
3 Bed-2 Bath
26'-8" x 56'

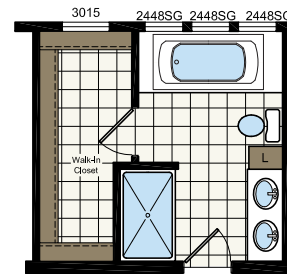


MODEL 4583A

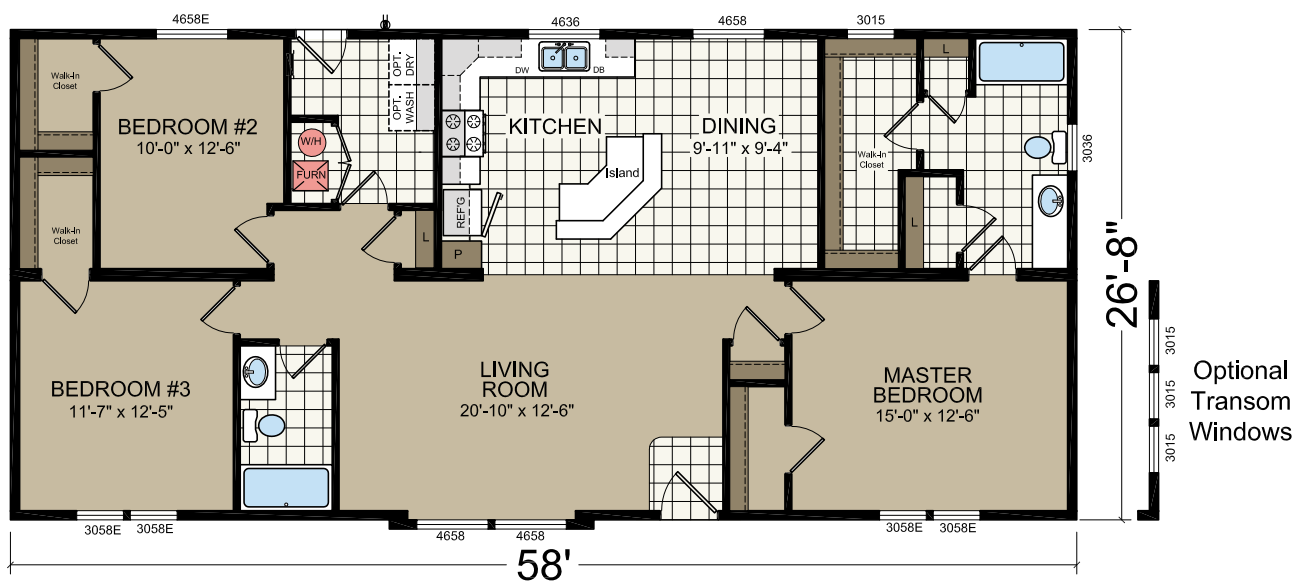
1547 sq.ft.
3 Bed-2 Bath
26'-8" x 58'



* Shown as Standard Plan



ALTERNATE
GLAMOUR BATH
WITH 72" TUB



MODEL 4603C

1600 sq.ft.
3 Bed-2 Bath
26'-8" x 60'

EXTERIOR 1



* Shown with Optional Recessed Porch
and Optional Exterior

EXTERIOR 2



* Shown with Optional Prow Porch
and Optional Exterior

EXTERIOR 3



* Shown with Optional Front Porch
and Optional Exterior

MODEL 4613G

1635 sq.ft.
3 Bed-3 Bath
26'-8" x 61'-4"

EXTERIOR 1



* Shown as Standard Plan

EXTERIOR 2



* Shown with Optional Family Room
Changes to 2026 sq.ft. | 26'-8" x 76'

MODEL 4623A

1653 sq.ft.
3 Bed-2 Bath
26'-8" x 62'

EXTERIOR 1

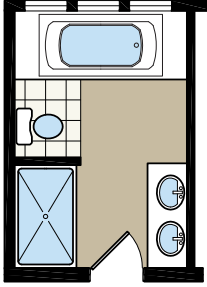


* Shown with Optional Elevation and Optional Garage

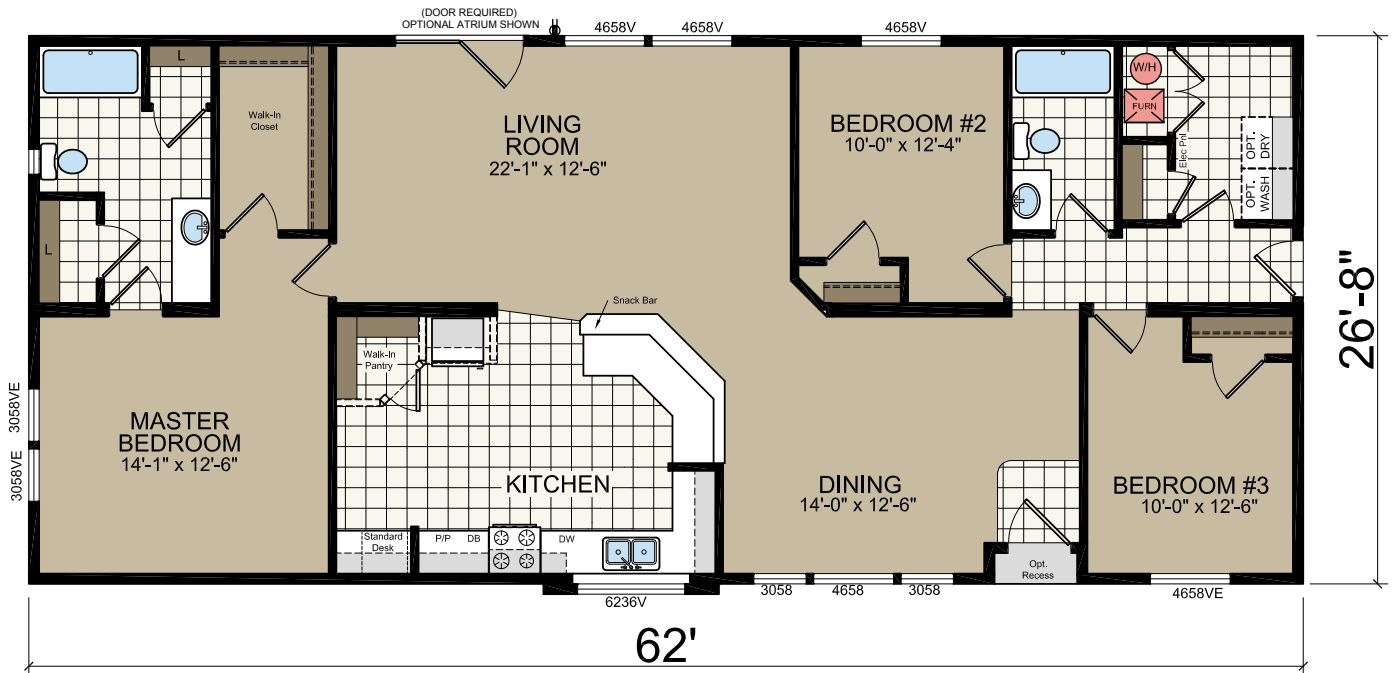
Smart, clean living



2448SG 2448SG 2448SG



OPTIONAL
GLAMOUR BATH



MODEL 4624A

1653 sq.ft.
4 Bed-2 Bath
26'-8" x 62'

EXTERIOR 1



* Shown as Standard Plan

EXTERIOR 2

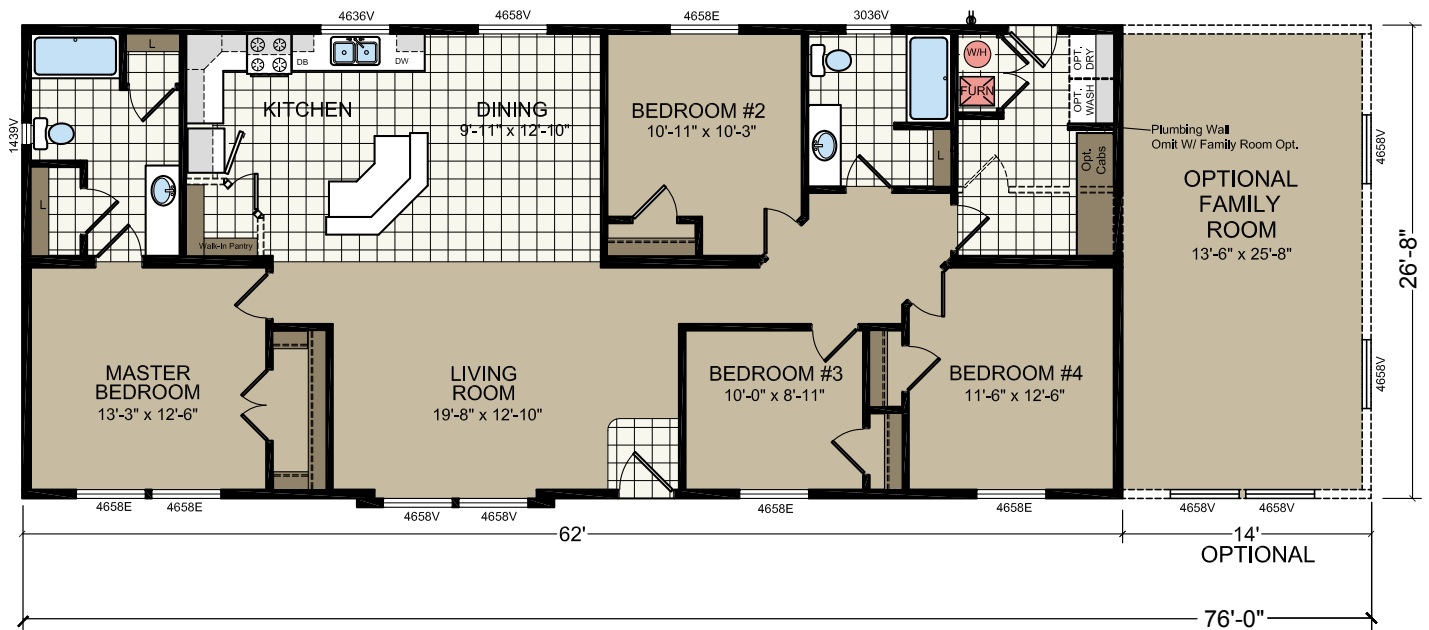
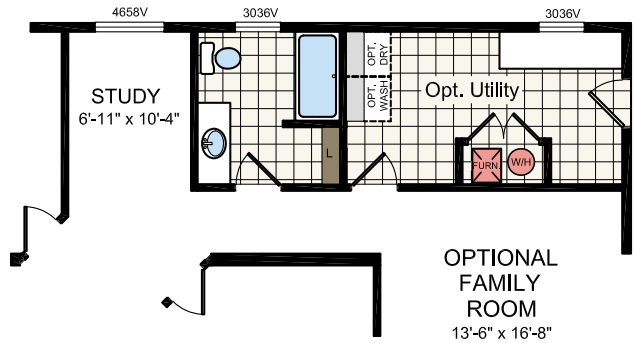
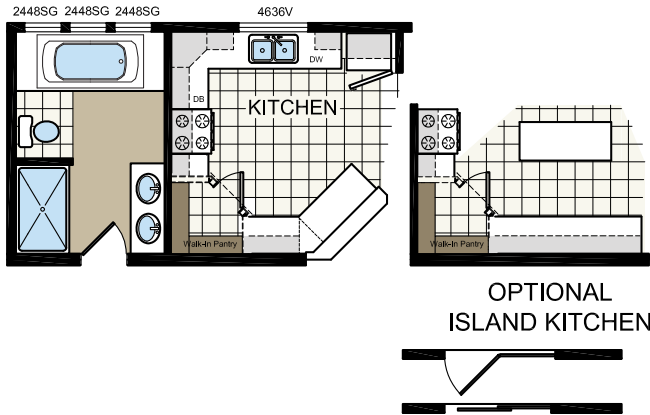


* Shown with Optional Family Room
Changes to 2026 sq.ft. | 26'-8" x 76'

OPTIONAL
GLAMOUR BATH

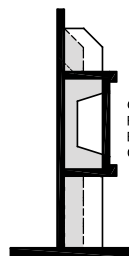
OPTIONAL
KITCHEN

OPTIONAL UTILITY
(w/ option stretch only)

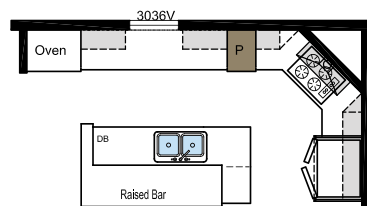


MODEL 4663K

1760 sq.ft.
3 Bed-2 Bath
26'-8" x 66'



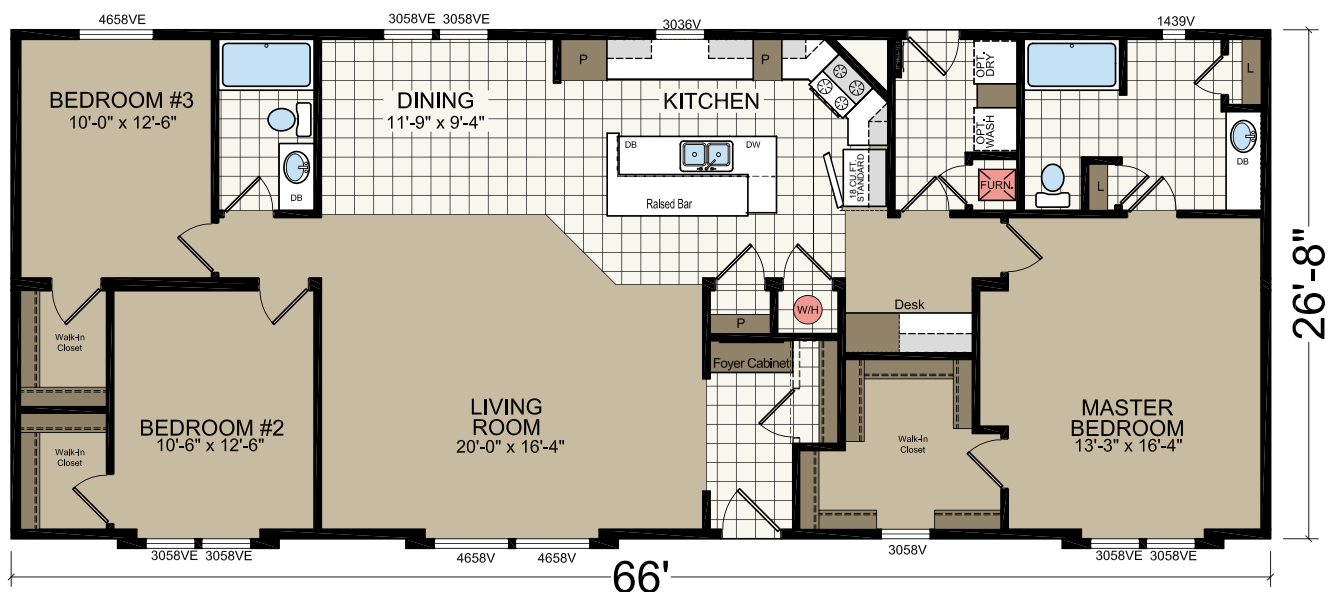
Optional
Fireplace
Entertainment
Center



ULTIMATE KITCHEN



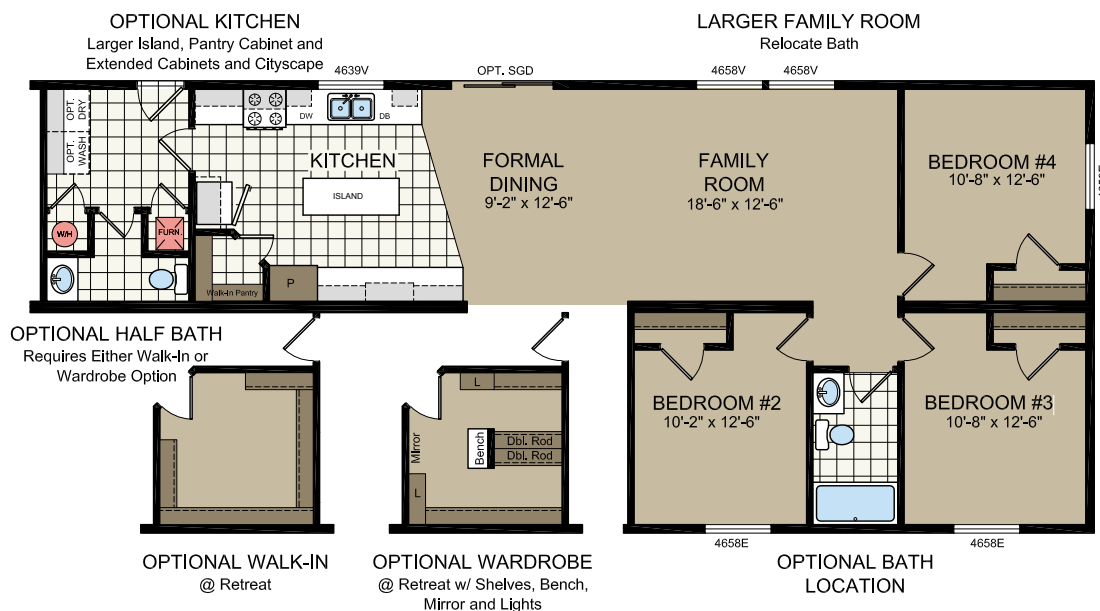
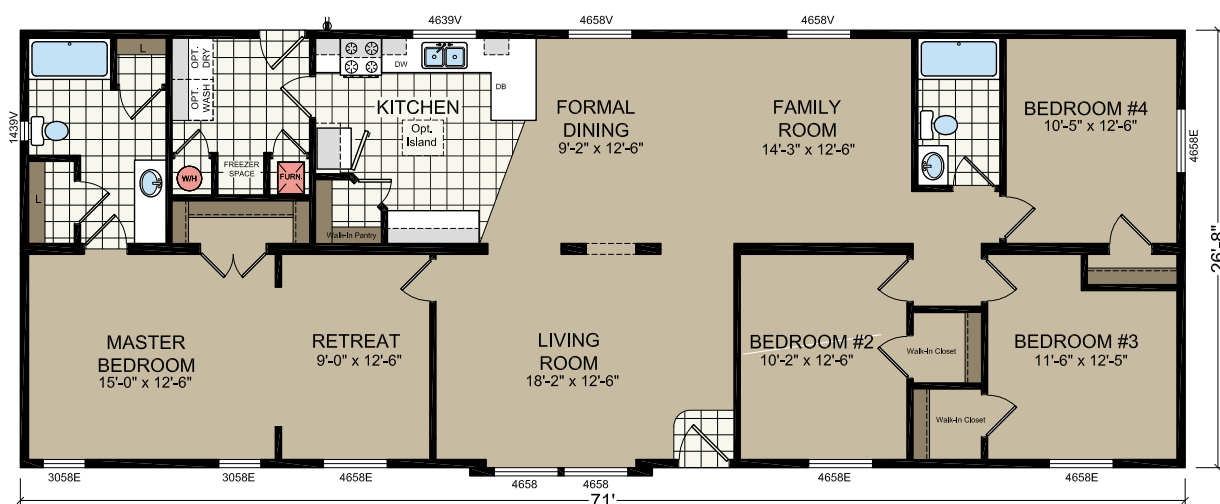
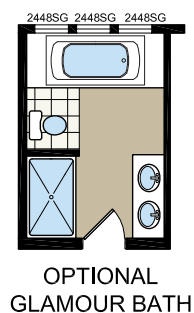
OPTIONAL GLAMOUR BATH





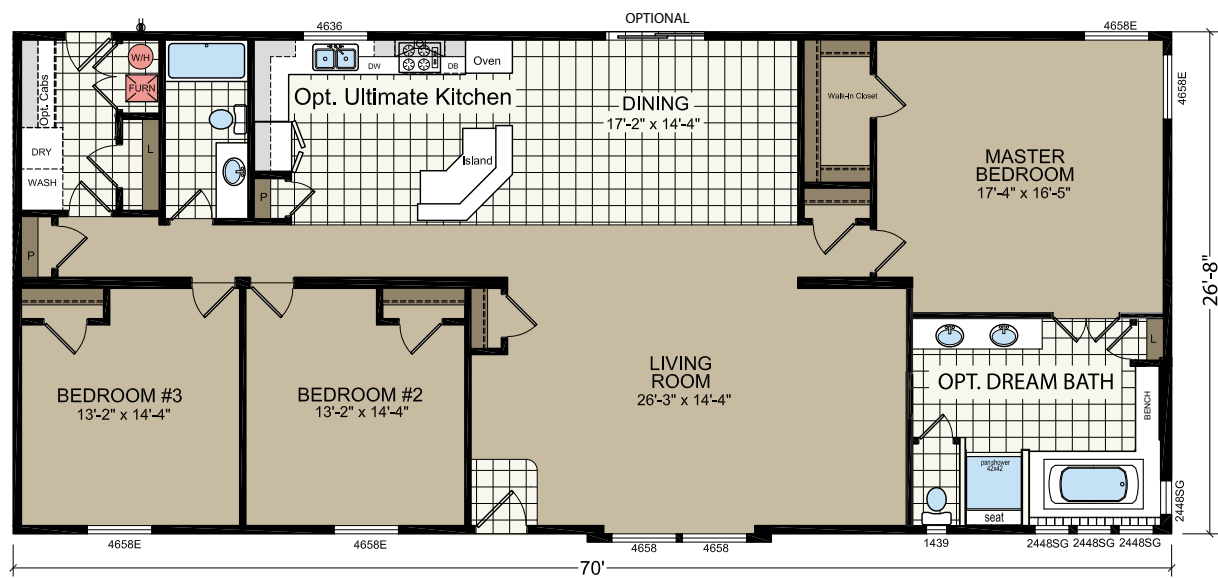
1893 sq.ft.
4 Bed-2 Bath
26'-8" x 71'

1893 sq.ft.
4 Bed-2 Bath
26'-8" x 71'



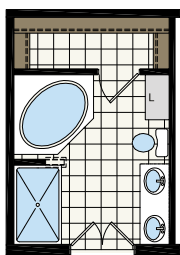
MODEL 4703A

1866 sq.ft.
3 Bed-2 Bath
26'-8" x 70'

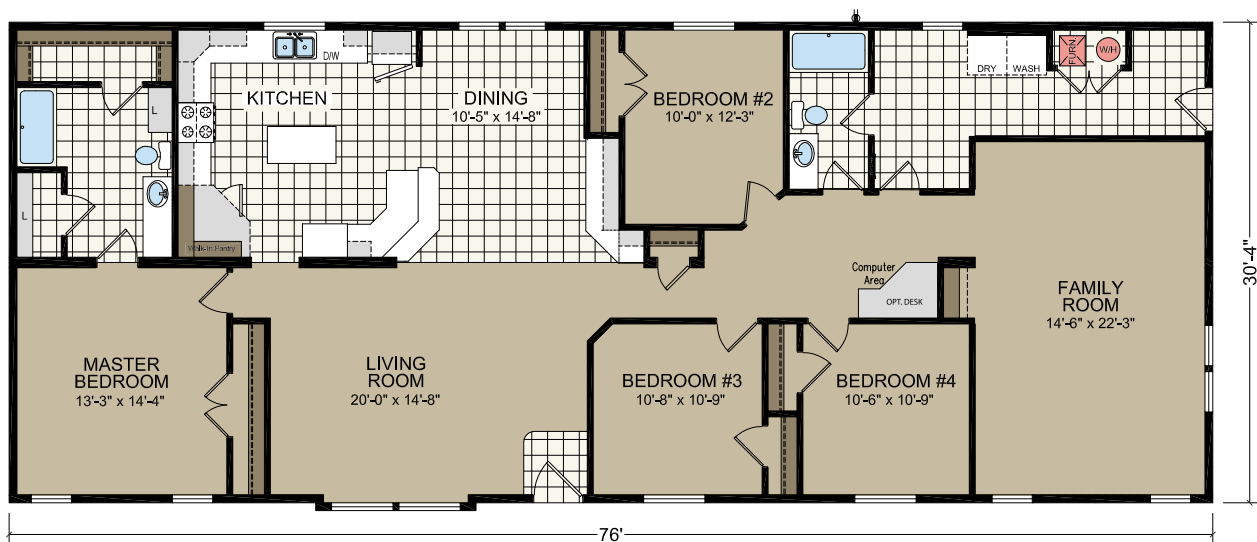


MODEL 6764U

2306 sq.ft.
4 Bed-2 Bath
30'-4" x 76'

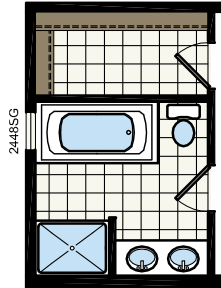


OPTIONAL
GLAMOUR BATH

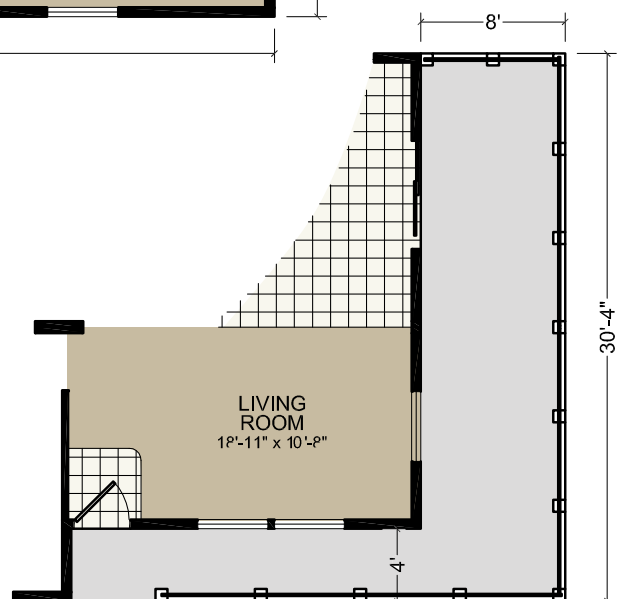
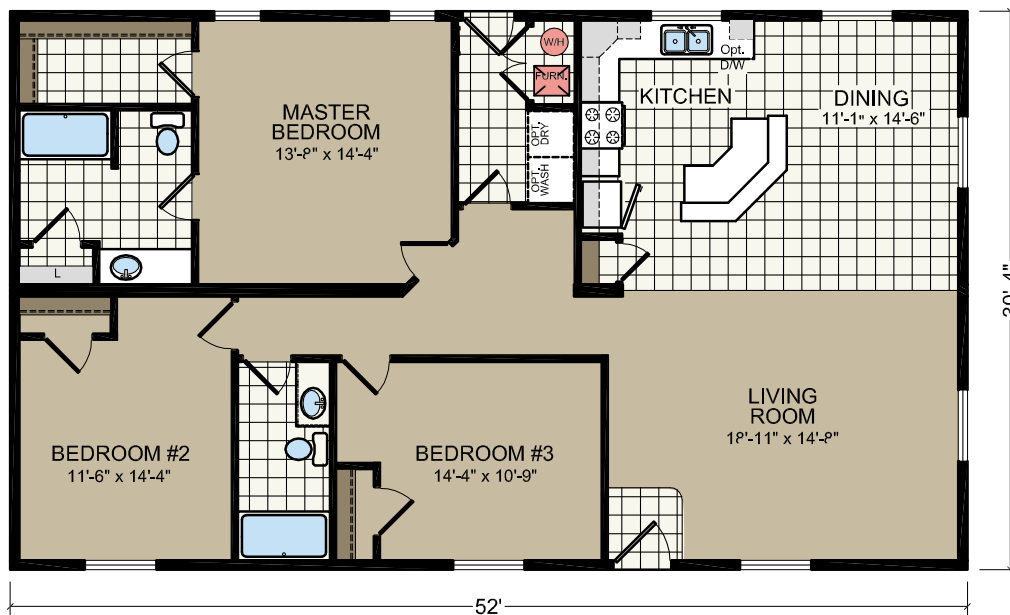


MODEL 6523F

1578 sq.ft.
3 Bed-2 Bath
30'-4" x 52'



OPTIONAL
GLAMOUR BATH



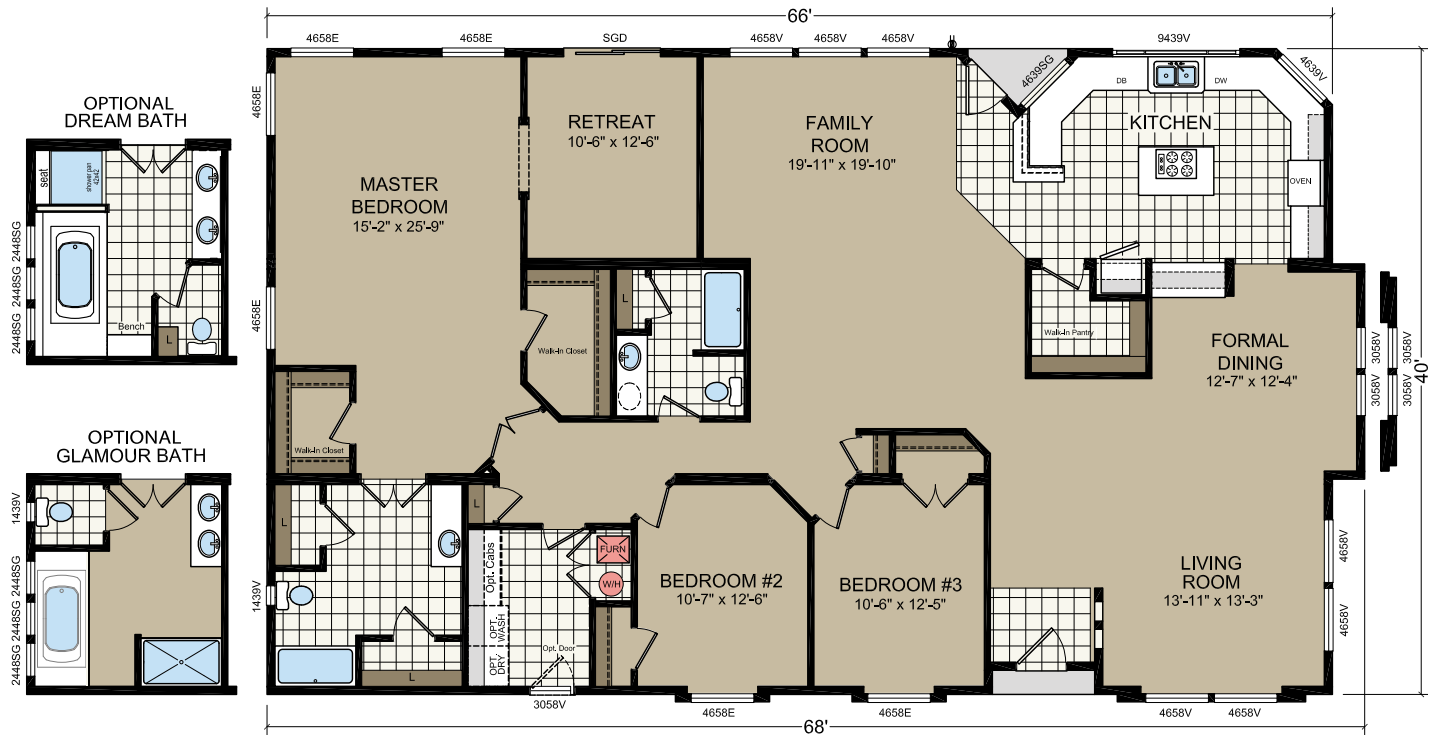
OPTIONAL
WRAP AROUND PORCH

2489 sq.ft.
4 Bed-2 Bath
40' x 66'

2489 sq.ft.
4 Bed-2 Bath
40' x 66'

MODEL 7683W

2661 sq.ft.
3 Bed-2 Bath
40' x 68'



Standard features

- Vaulted, Tape & Textured Ceiling T/O
- Factory Finished 1/2" Sheetrock Walls w/Rounded Corners
- In Floor Heat Duct Crossover
- Linoleum Entryway at Front Door
- Profile Craftsman Door and Window Molding T/O
- Satin Nickel Hardware T/O
- Satin Nickel Light Fixtures, Including Bedrooms
- Wood Shelving T/O
- Hardwood Flat Panel Tamarack Cabinets T/O
- 30" Lined Overhead Cabinets w/Adjustable Shelves
- Drawer-Over-Door Cabinet Construction
- Russian Birch Drawer Sides
- Ceramic Tile Backsplash T/O
- 36" Vanity Height in Master Bath
- Satin Finish Single Lever Faucets T/O
- Stainless Steel Kitchen Sink
- China Sinks in All Bathrooms
- 2" Faux Wood Blinds & Valances T/O
- 25 oz. Cut Pile Nylon Carpet w/Premium Stain Treatment
- Box Bay Windows Per Plan
- Dishwasher
- 6" Can Lights in Kitchen
- 28' Wide - Nominal 4:12 Pitch/16" Eaves/40# Roof Load
- 30' Wide - Nominal 3:12 Pitch/12" Eaves/30# Roof Load
- Higher Roof Load Options Available
- 2"X6" 90" Exterior Sidewalls - 16" o.c
- Recessed Frame
- Thermal Zone 3 Construction
- 2" x 4" Interior Walls - 16" o.c.
- Cemplank® Lap Siding on Front Door Side
- Cempanel® Siding on Remaining Three Sides
- Energy Star® w/ R-40, R-21, R33 Insulation
- Vinyl Low E Windows
- 36" Mission Front Door
- 32" 9-Lite Rear Door
- Choice of All Electric or All Gas House
- 50 Gal. Electric or 40 Gal. Gas Water Heater
- Whole-House & Individual Shut-Offs
- 1-Piece Tub/Shower in Both Bathrooms
- Deluxe Drawer Guides T/O
- Toe Kick Registers in Kitchen & Bathrooms
- 24' "B" Dormer
- Architectural Shingles
- Profile Baseboard Molding T/O
- Large Drawers Where Applicable (Kitchen)
- Eggshell Interior Paint
- Lifetime* Architectural Shingles

*for as long as you own your home









Titan Homes
PO Box 190
1425 Sunnyside Rd
Weiser, ID 83672

TitanhomesID.com

