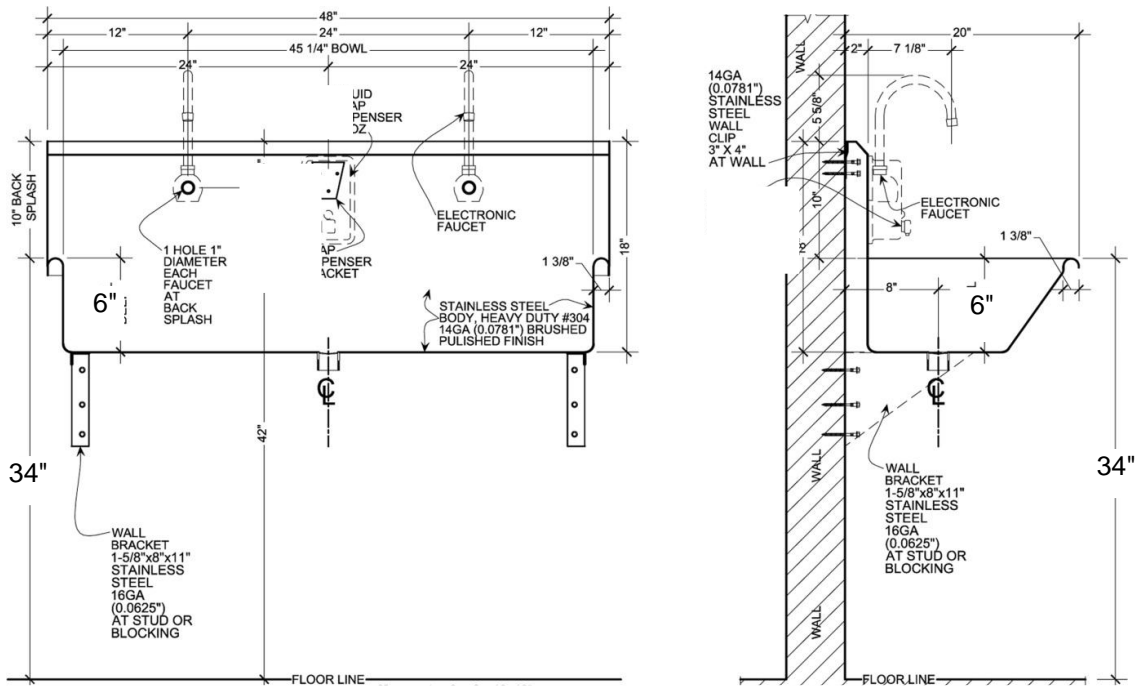


Wicketts Stainless

SPECIFICATION

Commercial Sink Heavy Duty
Wash Sink
WWT-Series



Model Number	L	W	L1	D	W1	BS
WWT-4820-SF-WB-ADA	48	20	45	6	18	10

Engineering Specification:

14 gauge, type 304 stainless steel wash sink. Top 1-3/8" rolled rims. 1 1/2" welded in grid drain. Exposed surfaces polished to a satin finish. Supported on (2) wall brackets and clips.

Wicketts Stainless, LLC.
2618 San Miguel Dr. Bldg. # 376
Newport Beach, CA 92660
Tel: 951-858-2548
Fax: 951-638-9059
www.wickettsstainless.com
sales@wickettsstainless.com



Approved for Manufacturing
Company: _____
Signature: _____
Print: _____ Date: / /