

Production Tracking Reports (PTR)

CRMR -Reports

The CRM Reports application creates production related reports based on the data collected from production tracking systems (multiple devices). The application provides a number of filters, options and customized report formats that allow the monitoring, evaluation and optimization of the manufacturing process.

Upon request, CRM Reports collects the data for the selected devices and creates a Microsoft Office Excel file with the desired report(s). The Excel file can be further processed as required: edited, printed, emailed, converted to PDF format, etc.

Report Set

Production

Production Report

Quality

Quality Report

Quality Report – Parts

OEE

OEE Report – Devices

OEE Report – Shifts

OEE Report – Per Line – Per Shift

OEE Report – Per Line – Per Part

OEE Report Summary

Downtime

Downtime Report – All Shifts

Downtime Report – Per Shift

Downtime Summary Report

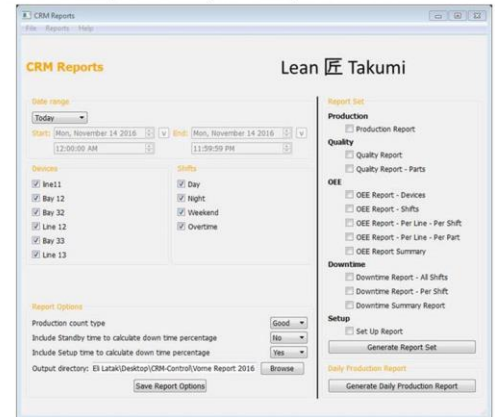
Setup

Setup Report

We can customize reports according to your needs.

Lean 匠 Takumi

Business Improvement, Lean Implementation & Coaching



CRMR -Reports

Challenges

You installed the Production tracking system and collected data, now what? How do you translate the data to production efficiency? How can you collect data from all your units ?

Solutions

CRM Report application creates production related reports from the data collected from multiple production tracking systems

Cost

- \$4000 per facility.
- Unlimited users!
- Unlimited users!

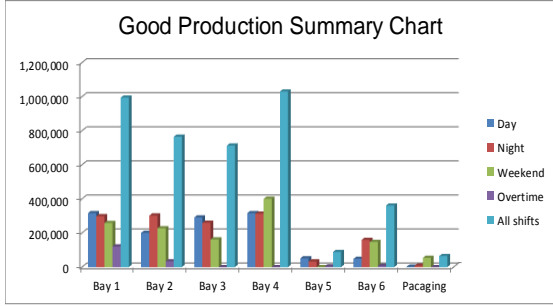
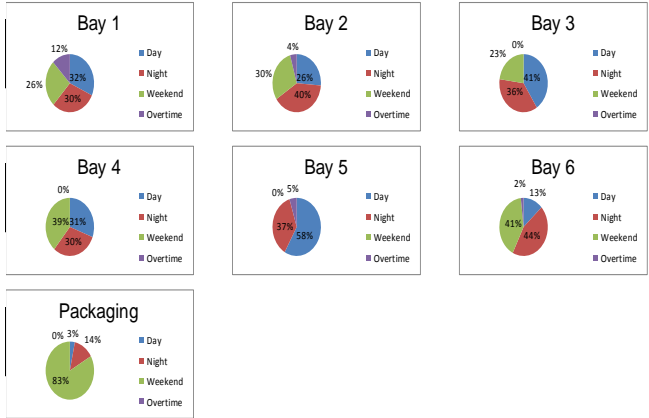
Reports Samples

Production Report 2017/1/30-2017/2/5

Bay 1	316,674	298,238	258,676	120,750	994,338
Bay 2	201,005	302,262	228,006	33,642	764,915
Bay 3	290,916	259,519	162,278	0	712,713
Bay 4	316,458	313,468	400,432	0	1,030,358
Bay 5	51,690	32,744	0	4,272	88,706
Bay 6	47,910	159,470	147,346	6,590	361,316
Pacaging	2,152	8,664	53,832	0	64,648

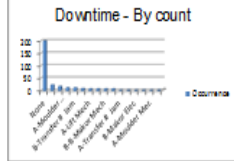
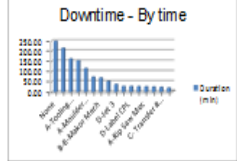
Production	4,087,784
OEE	56.4%
Reject	1.7%
Setup	89
Raw	425,964
Primed	3,591,030
Total	4,016,994

Production Report - Shifts 2017/1/30-2017/2/5



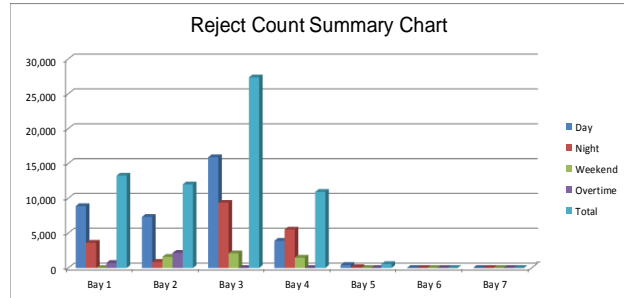
Downtime - line1 - All Shifts 2017/2/6-2017/2/12

Name	Duration (min)	% Time	Average	Min.	Max.
A-M outside Jam	247.89	5.7%	1.24	0.02	15.77
A-Transfer # Jam	224.40	5.2%	0.22	0.01	21.44
A-Transfer # Change	182.17	4.4%	34.74	0.28	37.88
D-System TM Mch	153.14	3.7%	33.34	1.12	71.47
A-M outside Quality	115.17	2.7%	0.77	0.02	13.89
C-Transfer # Jam	75.13	1.8%	0.45	2.02	14.21
B-M Motor Mech	69.22	1.6%	0.89	0.42	20.02
A-M outside Mch	51.13	1.2%	26.11	13.17	35.35
D-We 13	37.80	0.9%	26.30	15.94	11.66
A-Transfer # Mch	27.73	0.7%	25.88	5.27	24.45
C-Label CPL	27.44	0.7%	27.44	27.44	27.44
C-Transfer # Jam	26.20	0.6%	3.79	0.01	7.50
A-M Saw Mch	22.28	0.5%	12.24	1.21	22.27
A-LR Mch	24.61	0.6%	1.21	0.11	2.11
C-Transfer # Mch	23.13	0.5%	11.94	2.02	21.02
Oven Temperature Lost	20.02	0.5%	20.02	20.02	20.02



Quality Report 2017/2/6-2017/2/12

	Day	Night	Weekend	Overtime	Total	Day %	Night %	Weekend %	Overtime %	Total %
Bay 1	8,892	3,626	0	735	13,253	3.2%	1.4%	0.0%	2.2%	1.6%
Bay 2	7,346	896	1,600	2,160	12,002	3.8%	0.5%	0.6%	4.6%	1.8%
Bay 3	15,900	9,366	2,098	0	27,364	4.2%	2.7%	1.0%	0.0%	2.9%
Bay 4	3,904	5,524	1,490	0	10,918	1.0%	1.3%	0.4%	0.0%	0.9%
Bay 5	436	132	0	0	568	0.8%	0.2%	0.0%	0.0%	0.5%
Bay 6	0	0	0	0	0	0.0%	0.0%	0.0%	0.0%	0.0%
Bay 7	0	0	0	0	0	0.0%	0.0%	0.0%	0.0%	0.0%
Total Reject	64,105									
Total %	1.5%									



OEE - line1 2017/2/6-2017/2/12

	OEE	Availability	Performance	Quality
Day	56.7%	61.2%	94.9%	97.6%
Night	62.8%	62.5%	101.4%	99.1%
Weekend	87.6%	76.4%	114.5%	100.0%
Overtime	84.0%	91.6%	103.2%	88.8%

