

OPEN ROLLER CABLE GUIDED SCREEN SYSTEM



MANUAL OR MOTORIZED SCREEN INSTALLATION INSTRUCTIONS

TOOLS NEEDED AND PREPARATION

TOOLS FOR ASSEMBLY

- Tape Measure
- Impact Driver
- Drill
- Levels
- Impact Bits
- 5mm Allen Wrench
- Swage Crimper
- Plumb Line
- Cable Cutter
- 7/16" Wrenches (2)

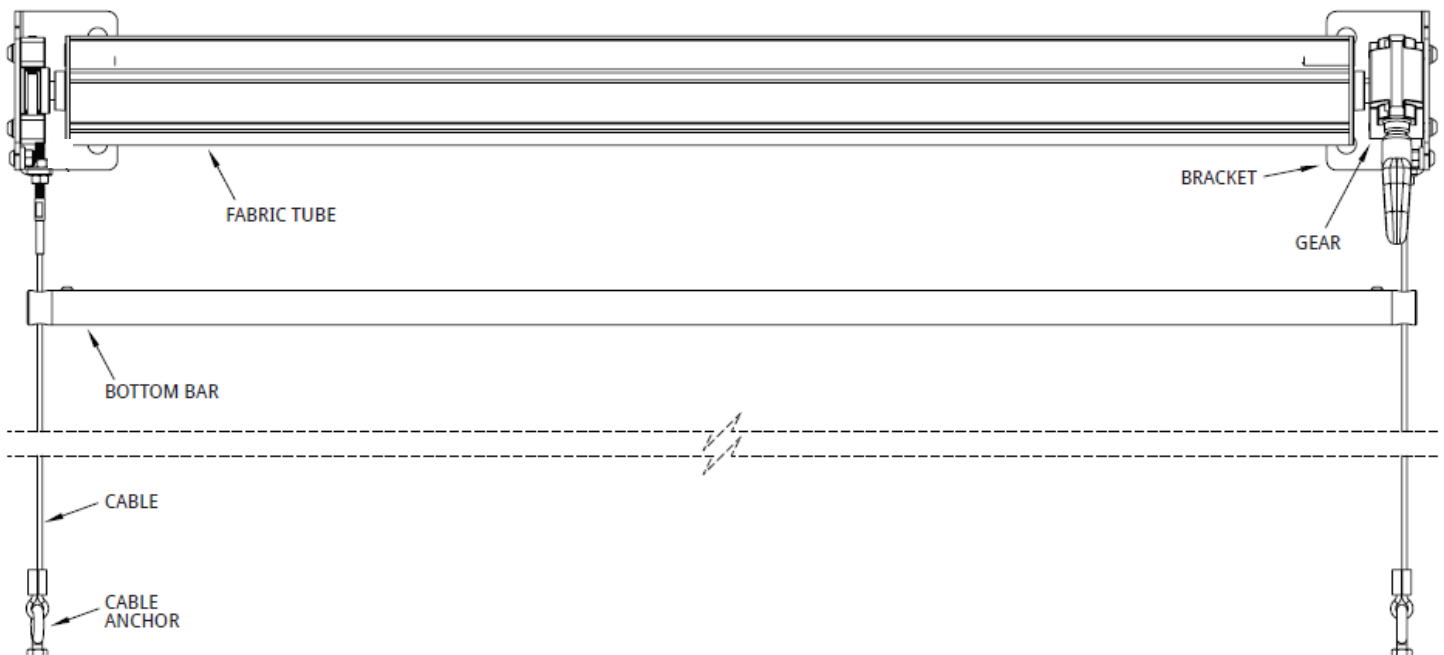
HARDWARE PROVIDED

- Mounting Brackets (2)
- Gear (or Motor) Drive (1)
- Cable w/ Tension Bolt (2)
- Cable Swage Eye (2)
- Cable Anchor (2)
- Roll Tube (1)
- Screen Material (1)
- Bottom Bar Cable Guide (2)

NOT PROVIDED

- 5/16x4 1/2" Bracket Lag Screws (or appropriate) (4)
- #8 x 3" Stainless Wood Screw (or appropriate) (4)

COMPONENTS



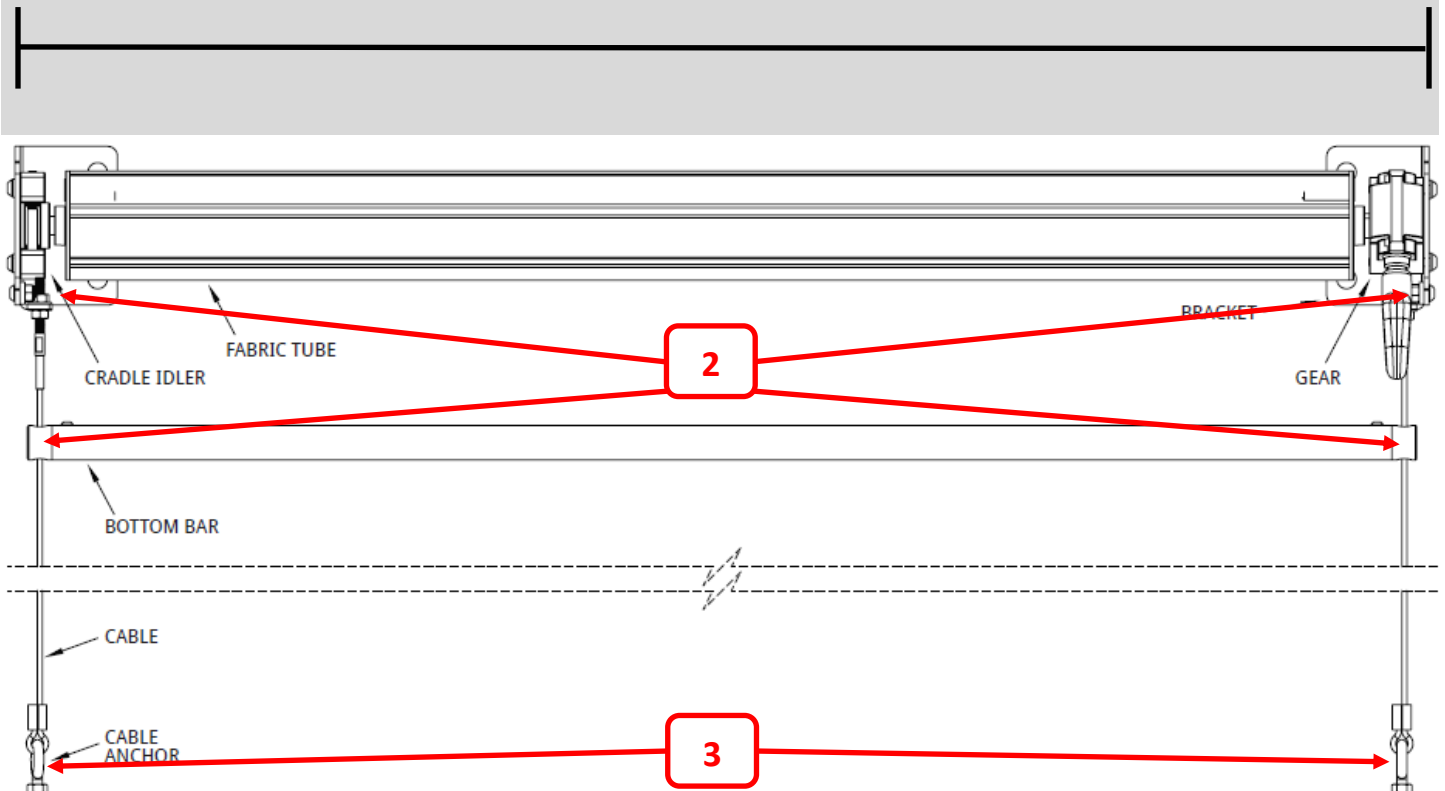
STEP 1

VERIFYING MEASUREMENTS

Screen measurements are as follows:

- 1) Mounting Width is measured from **outside** of bracket to **outside** of bracket
- 2) Verify upper cable mount width is the same as bottom bar cable guide holes
- 3) Lower cable mounts **MUST** be mounted plumb and equal distance as upper cable mount and bottom bar cable guide holes

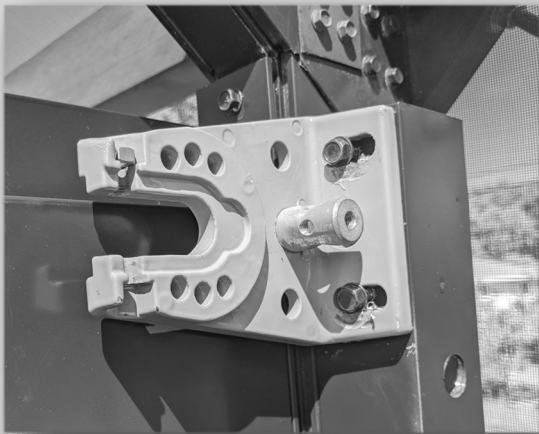
1) Measurement is outside of bracket to outside of bracket



STEP 2

UPPER BRACKETS (FACE MOUNT)

- a) Mark outer edge bracket location at ordered width
- b) Use appropriate hardware (not provided) to mount and level Upper Brackets



Wood Lag

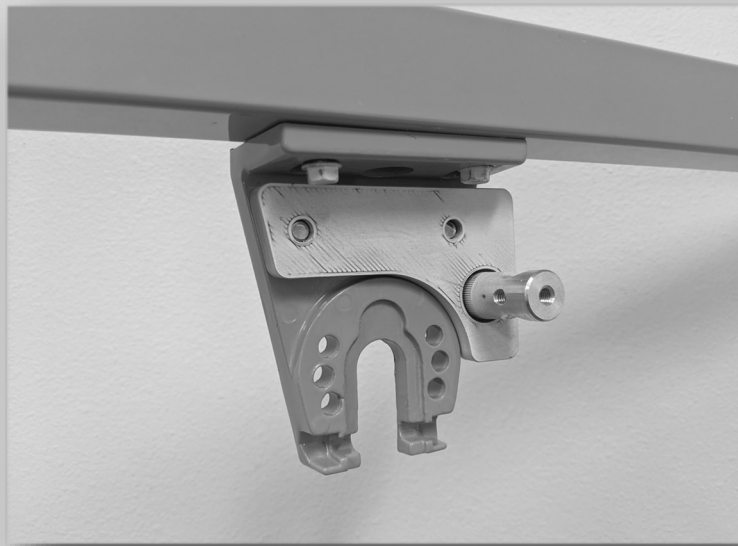
Self-Drilling Metal

Concrete Tapping (Tapcon)

STEP 2

UPPER BRACKETS (CEILING MOUNT)

- a) Mark outer edge bracket location at ordered width
- b) Install Ceiling Mount Adapters with barrel to the rear using provided screws and lockwashers
- c) Use appropriate hardware (not provided) to mount and level Upper Brackets



Wood Lag



Self-Drilling Metal



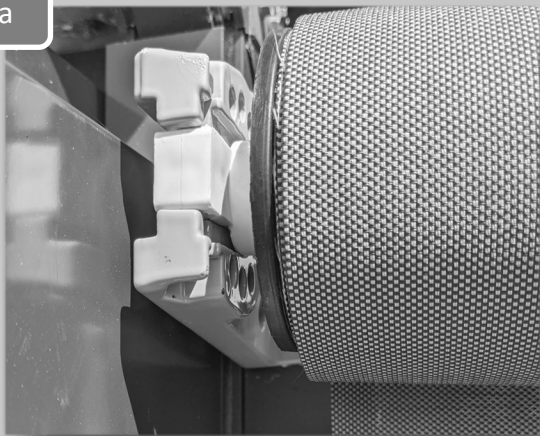
Concrete Tapping (Tapcon)

STEP 3

INSTALL ROLL TUBE

- a) Slide roll tube into brackets
- b) Insert and tighten roll tube retention bolts
- c) Ensure motor drive is clipped into place (Only motorized units)

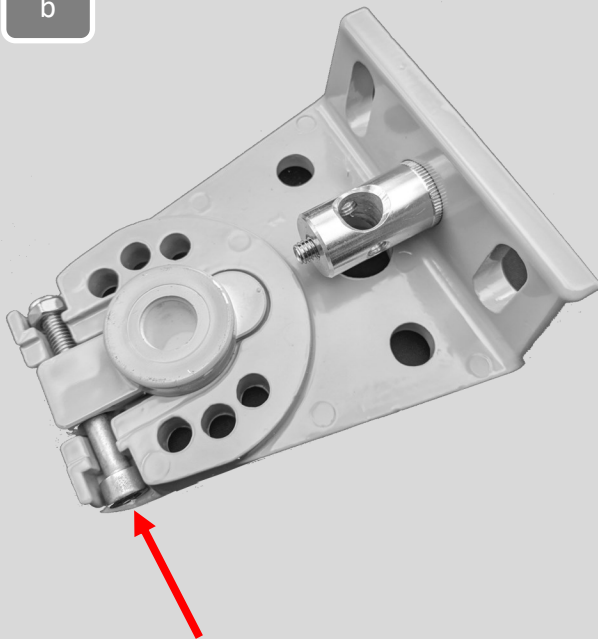
a



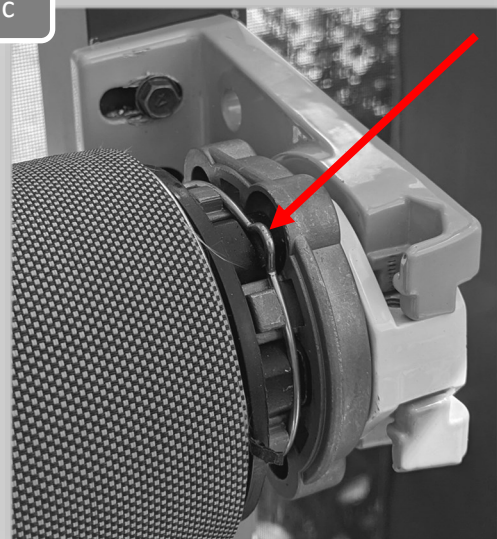
a



b



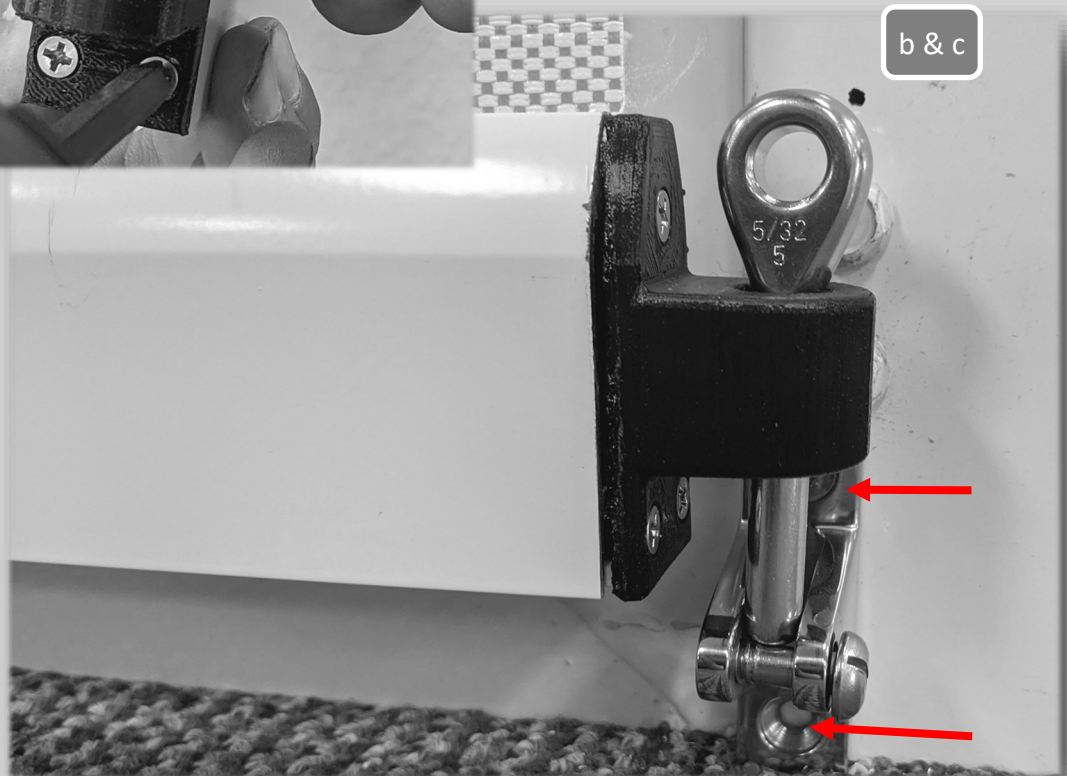
c



STEP 4

LOWER CABLE BRACKETS

- a) Lower Screen and install the bottom bar cable guides
- b) Insert bottom cable swage eye down through the bottom bar cable guide to identify anchor point.
- c) Secure lower bracket with appropriate #8 hardware (Lower bracket can be either wall or floor mounted)



STEP 5

CABLE ASSEMBLY

- a) Install one jam adjustment nut to the end of the cable stud and pass cable through stud in upper basket
- b) Mark bottom of cable to identify the length to trim the cable to fit the swage eyes
- c) Trim off excess cable and crimp swage eye to cable
- d) Install swage eye through mount

a



b



c



d



STEP 6

CABLE ADJUSTMENTS

- a) Tighten previously installed jam nut on the top of the cable to adjust the cable tension . Use the second jam nut to lock in place.

*****Do NOT overtighten the cable tension*****



TEST FUNCTION

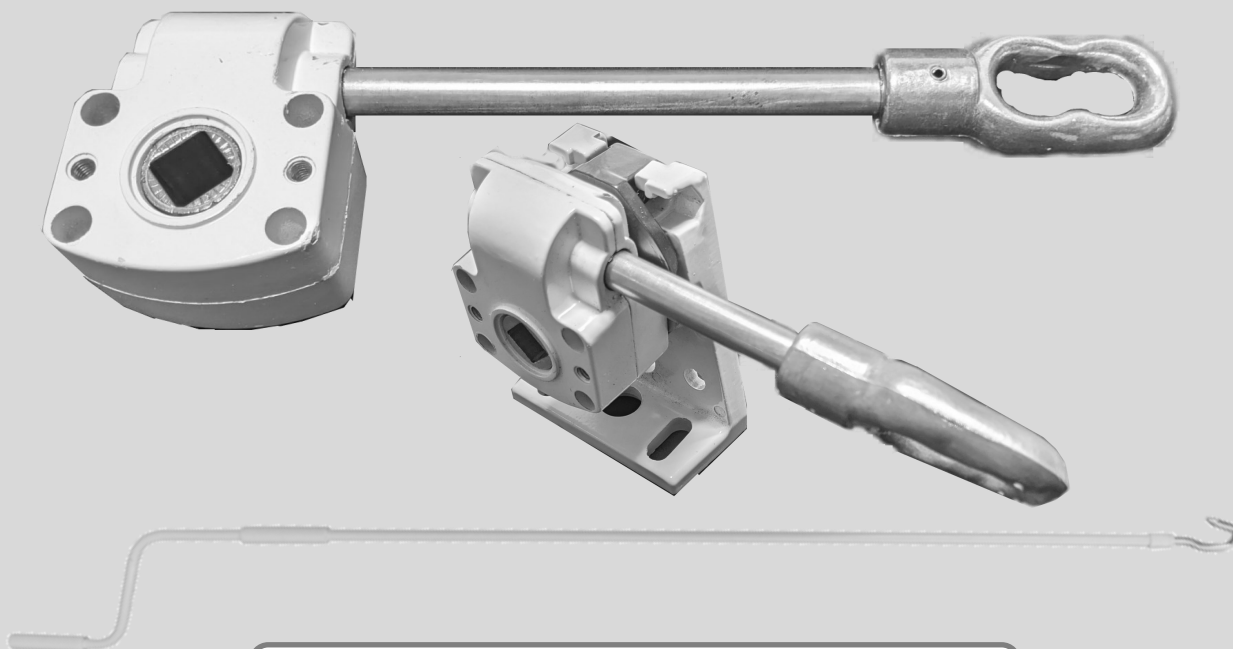


YOUR INSTALL IS NOW COMPLETE

APPENDIX A

DRIVE OPTIONS

Manual Drive—Only available in WHITE



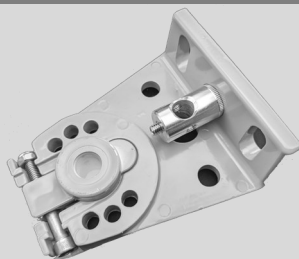
MOTOR DRIVE



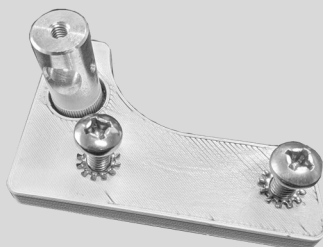
APPENDIX B

PARTS

Upper
Mounting
Bracket



Ceiling
Mount
Adapter



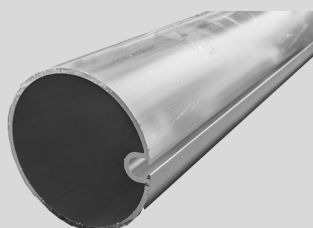
Motor
Drive &
Remote



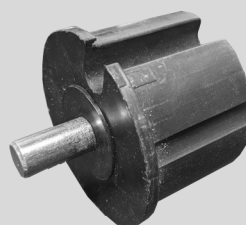
Manual
Gear Drive



Roll Tube



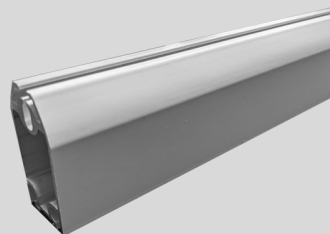
Roll Tube
Idler



APPENDIX B

PARTS (CONT.)

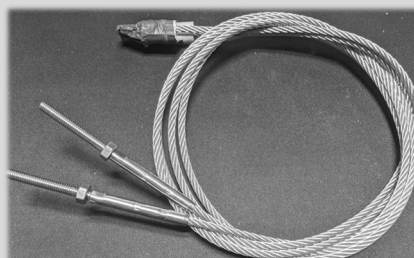
Bottom Bar



Bottom Bar
Plug



Guide
Cable Asm



Cable
Thimble



Lower
Cable
Anchor

