

Rabbit Anti-Chromogranin A Recombinant [MD87R]: RM0061, RM0061RTU7

Intended Use: For Research Use Only

Description: Chromogranin A (CgA) is an 86 kDa protein that is the major member of the granin family of acidic secretory glycoproteins located in neurosecretory granules of neuroendocrine cells. Chromogranin A showed broad expression in endocrine tissues including pituitary, adrenal medulla, thyroid, pancreatic islets and gastrointestinal tract. Chromogranin A represents the single most specific marker of neuroendocrine differentiation in general use. It is useful for identification of neuroendocrine tumors.

Specifications:

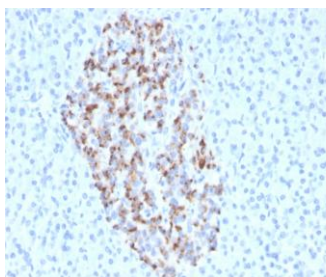
Clone: MD87R
Source: Rabbit
Isotype: IgG
Reactivity: Human
Immunogen: Synthetic peptide to human Chromogranin A residues aa400 - 600
Localization: Cytoplasm
Formulation: Antibody in PBS pH7.4, containing BSA and $\leq 0.09\%$ sodium azide (NaN₃)
Storage: Store at 2°- 8°C
Applications: IHC
Package:

Description	Catalog No.	Size
Chromogranin A Recombinant Concentrated	RM0061	1 ml
Chromogranin A Recombinant Prediluted	RM0061RTU7	7 ml

IHC Procedure*:

Positive Control Tissue: Pancreas, neuroendocrine tumor
Concentrated Dilution: 50-200
Pretreatment: Tris EDTA pH9.0, 15 minutes using Pressure Cooker, or 30-60 minutes using water bath at 95°-99°C
Incubation Time and Temp: 30-60 minutes @ RT
Detection: Refer to the detection system manual

* Result should be confirmed by an established diagnostic procedure.



FFPE human pancreas stained with anti-Chromogranin A using DAB

References:

1. Insulinoma diagnosed as drug-refractory epilepsy in an adolescent boy: a case report. Horváth E1, et al. Rom J Morphol Embryol. 54(4):1147-51, 2013.
2. Evaluation of Ki-67 index in EUS-FNA specimens for the assessment of malignancy risk in pancreatic neuroendocrine tumors. Hasegawa T1, et al. Endoscopy. Jan;46(1):32-8. doi: 10.1055/s-0033-1344958. Epub 2013 Nov 11, 2013.
3. Pigmented paraganglioma of the kidney: a case report. Zhao L1, et al. Diagn Pathol. Jun 28;7:77. doi: 10.1186/1746-1596-7-77, 2012.

Doc. 100-RM0061
Rev. B