



# Airport Business Center

734-946-8730 [0] [reaconstruction@reaconstruction.net](mailto:reaconstruction@reaconstruction.net)

## 17,200 sq.ft. For Lease

28825 Goddard Rd, Romulus, MI 48174

Status:	Active
Property Type:	Industrial For Lease Cold
Industrial Type:	Flex Space
Contiguous Space:	17,200 SF
Total Available:	17,200 SF
Lease Rate:	
Lease Type:	
Loading:	2 Docks, 2 Doors
Ceiling:	20 - 22 ft.
Office SF:	7,300 SF
Drive-In Bays:	1 Bay



### Overview/Comments

For lease by owner. 17,200 sq.ft. available in the Airport Business Center. Brokers protected. Zoned MT 2. Adjacent to Detroit Metropolitan Airport. Gross lease. We pay for building taxes, insurance, landscaping, and snow removal. Call Rea Construction for a tour at 734-946-8730. Visit our website at <http://www.rea-construction.net>.

### Virtual Tour

<https://view.ricoh360.com/64d2677e-7494-4273-8203-9f9e951459dc>

### General Information

Tax ID/APN:	263960770	Zoning:	MT 2
Industrial Type:	Cold Storage, Flex Space, Industrial-Business Park, Manufacturing, Mixed Use, Light Industrial, Warehouse/Distribution	Building Name:	Airport Business Center
		Land Area:	25 Acres

### Available Space

Suite/Unit Number:	100,101,102	Conference Rooms:	2
Space Available:	17,200 SF	Offices:	12
Minimum Divisible:	17,200 SF	Office SF:	7,300SF
Maximum Contiguous:	27,600 SF	Kitchen/Breakroom:	Yes
Space Description:		Parking Spaces:	40
	Relet	Loading Docks:	2
Space Type:	02/01/2026	Loading Doors:	2
Date Available:		Drive In Bays:	1
Lease Rate:	Modified Gross	Ceiling Height:	22
Lease Type:	Fixed Lease	Clear Height:	20
Rent Escalators:			

### Area & Location

Property Located Between:	Inkster and Middlebelt
Highway Access:	Interstate 94
Airports:	Detroit Metropolitan Airport

### Building Related

Tenancy:	Multiple Tenants	Office Space SF:	7,300 SF
Total Number of Buildings:	7	Property Condition:	Good
Number of Stories:	1	Year Built:	1997

Year Renovated:	2004	Sprinklers:	Wet
Roof Type:	Flat	Volts:	480
Construction/Siding:	Block	X-Phase:	3
Parking Type:	Surface	Heat Type:	Natural Gas, Suspended Radiant Heaters
Total Parking Spaces:	40	Heat Source:	Central
Column Spacing:	20	Lighting:	Metal Halide
Passenger Elevators:	0	Internet Access:	Cable
Freight Elevators:	0		

### Land Related

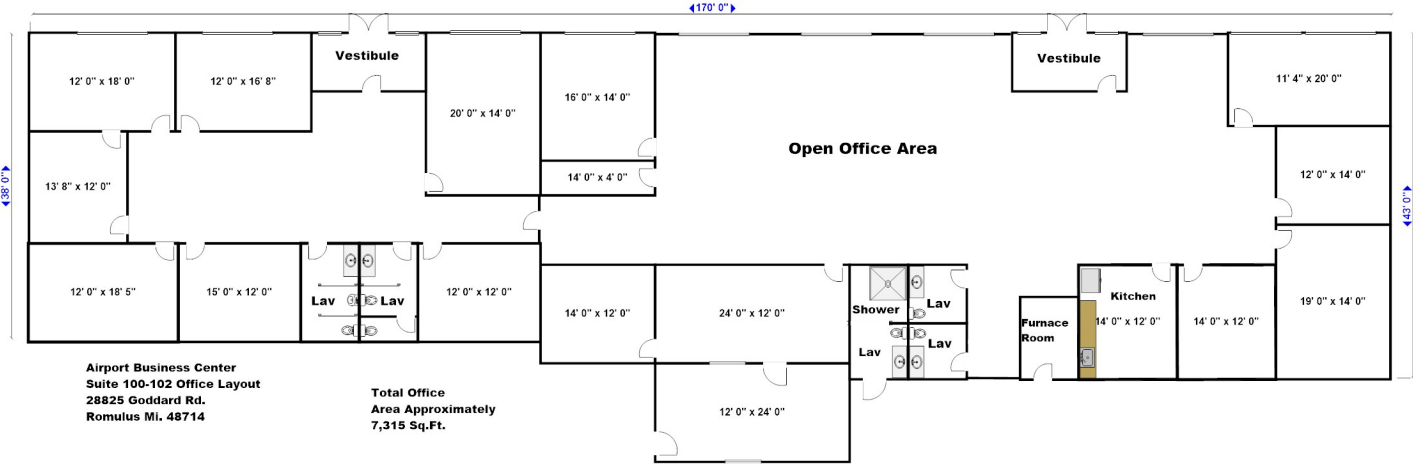
Zoning Description:	Heavy Industrial
Water Service:	Municipal
Sewer Type:	Municipal

### Location

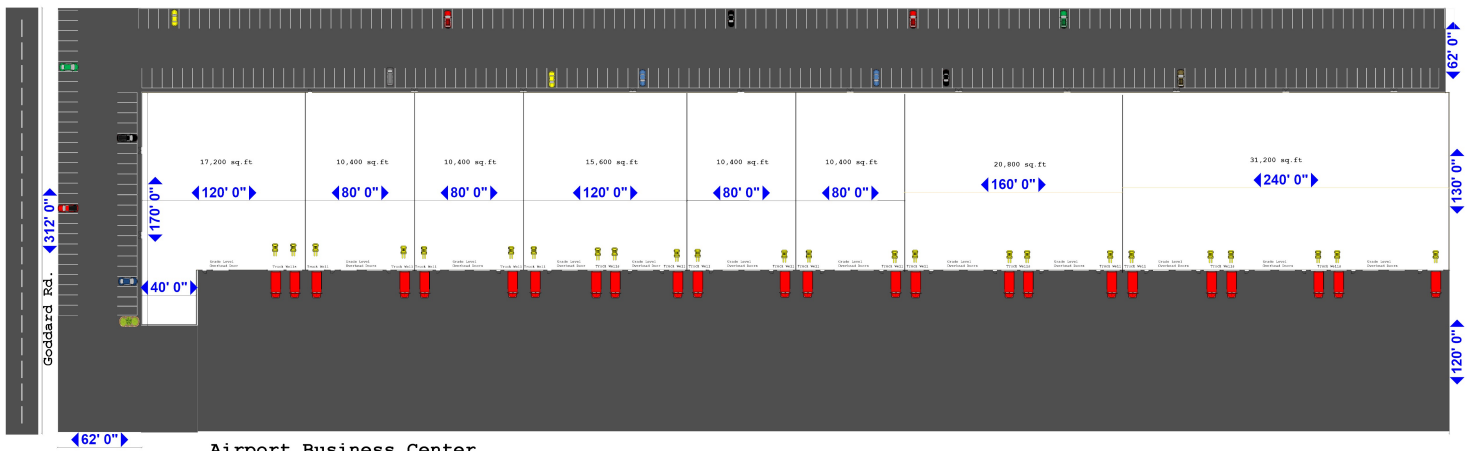
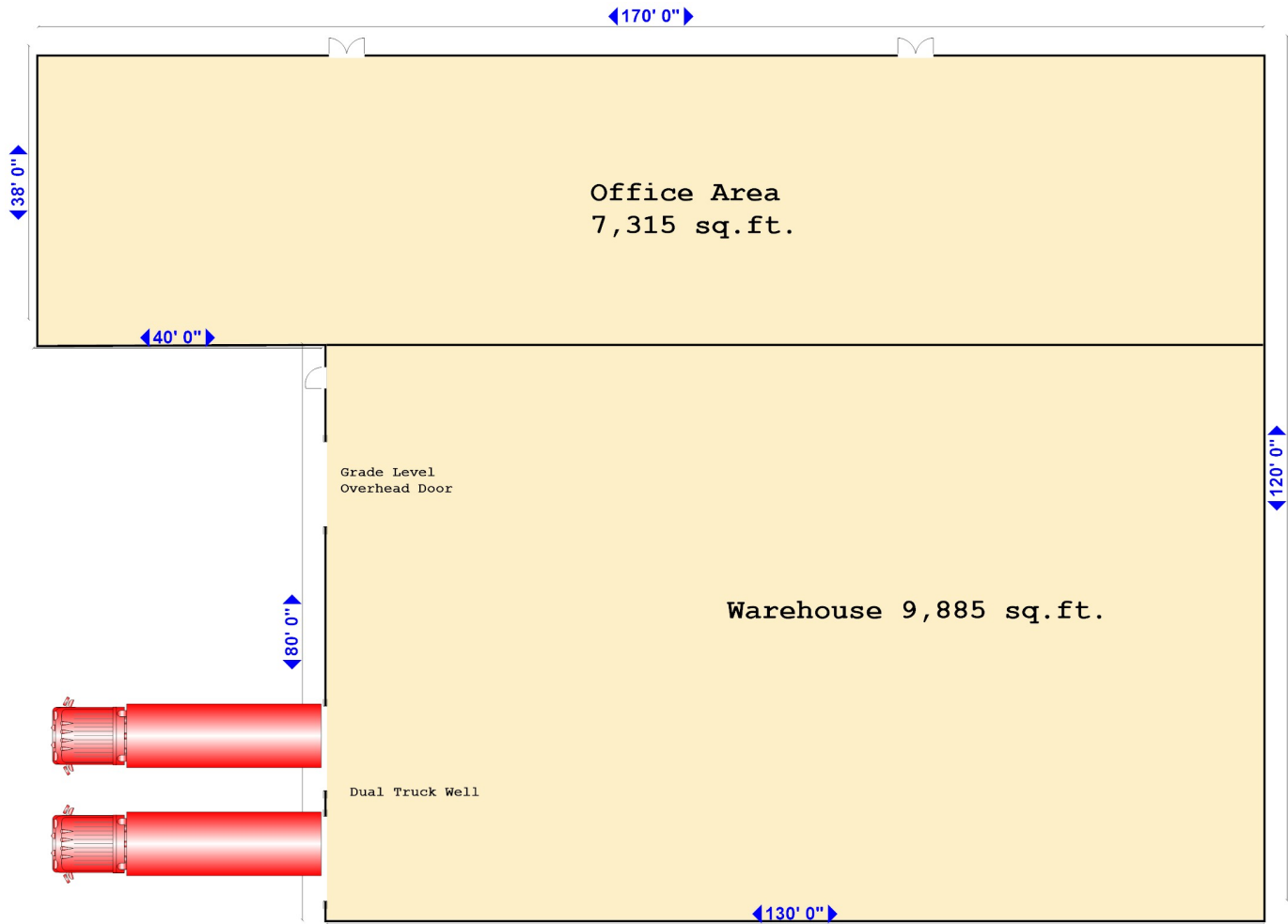
Address:	28825 Goddard Rd, Romulus, MI 48174	MSA:	Detroit-Warren-Dearborn
County:	Wayne	Submarket:	Airport District



### Property Images







**Airport Business Center**  
28825 Goddard rd. Romulus Mi. 48174  
126,000 sq.ft.

# Property Contacts

---



Salvatore Giordano

Rea Construction

734-946-8730 [0]

[reaconstruction@reaconstruction.net](mailto:reaconstruction@reaconstruction.net)