



# ROUSE-SIRINE ASSOCIATES, LTD.

LAND SURVEYORS, MAPPING CONSULTANTS  
& S.U.E QUALITY LEVELS "A-D"

## New Technology

### FARRO FOCUS 3D X 330 LASER SCANNER

Rouse-Sirine Associates, Ltd. is proud to provide the most updated technologies in surveying for your next project with the addition of the **FARRO Focus 3D X 330 Laser Scanner**. This scanner incorporates the fastest and most advanced technology currently available. With its long-range survey grade accuracy and high scan resolution, it enables RSA to provide you with a cost effective service unparalleled in the industry.

#### Advantages-

Detailed 3D Point clouds will supplement conventional topographic mapping and as-built surveys for better analysis and visualization.

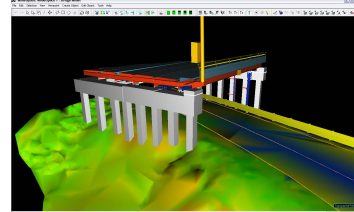
Bridge, tunnel, or any structural inspection. Complex and dangerous environments can be surveyed safely and with incredible detail.

Rapidly generates accurate DTM's (digital terrain models).

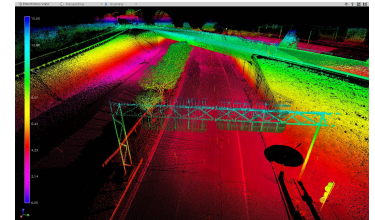
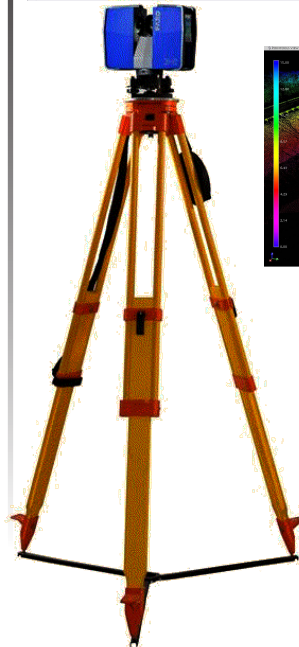
Deformation and subsidence monitoring. Plant Engineering

Detailed, 3D as-built data for complex environments.

We realize this technology may not entirely replace your need for conventional mapping, but it does provide an additional by-product which in the near future will become a necessity for many of your projects.



Waterline repair



Laskin Road