

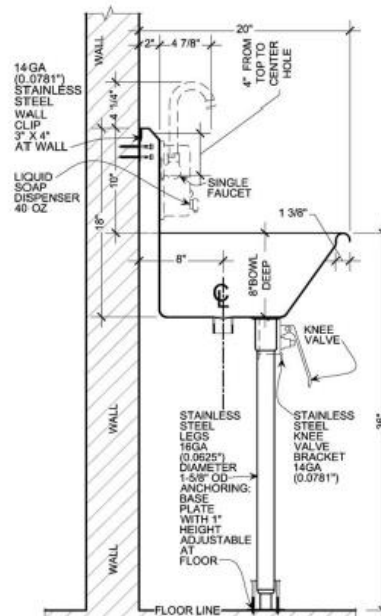
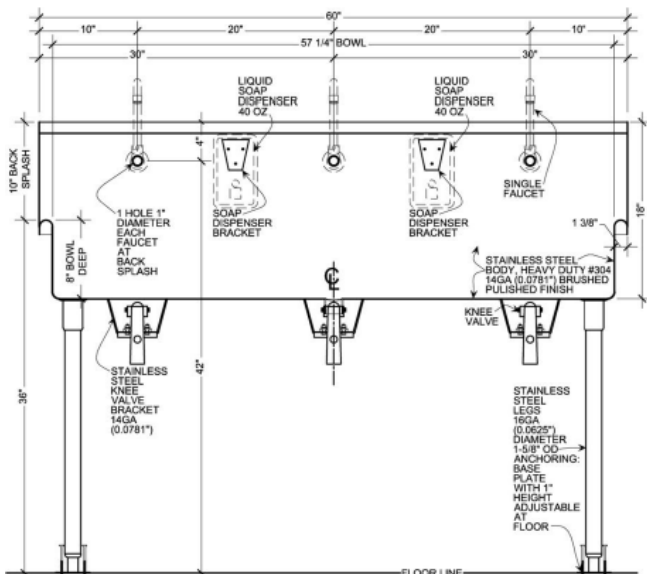
# Wicketts Stainless

## SPECIFICATION

Commercial Sink Heavy Duty  
Wash Up Sink WWT-Series Sens



Hot & Cold Valves



Model Number	A	B	C	D	E	F
MWT-6020-K-LF	60	20	57	8	28.5	10

**Engineering Specification:** 14 gauge, type 304 stainless steel wash sink. Top 1-3/8" rolled rims. 1-1/2" Welded In drain. Exposed surfaces polished to a satin finish. Supported on (2) Wall clips.; Legs to floor With flange Feet

Wicketts Stainless, LLC.  
2279 Eagle Glen Pkwy. #112-209  
Corona, Ca 92863  
Tel: 951-858-2548  
Fax: 951-638-9059  
Sales@wickettsstainless.com

CITY OF LOS ANGELES  
CALIFORNIA



ERIC GARCETTI  
MAYOR



Approved for Manufacturing  
Company: \_\_\_\_\_  
Signature: \_\_\_\_\_  
Print: \_\_\_\_\_ Date: / /