

Appendix G.



County ERIE

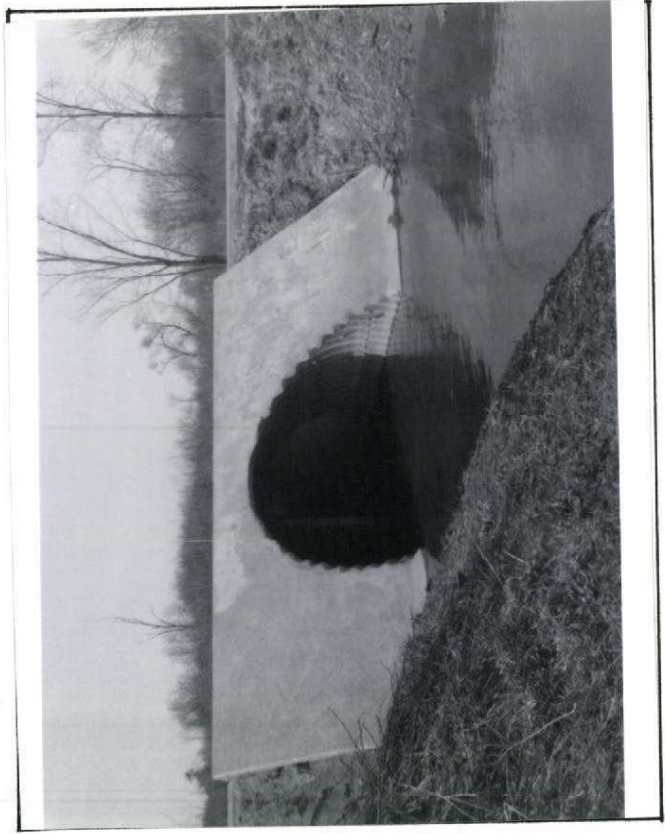
L.R. 25032 (Pr B6)

Station 450+95

Date 4-26-78



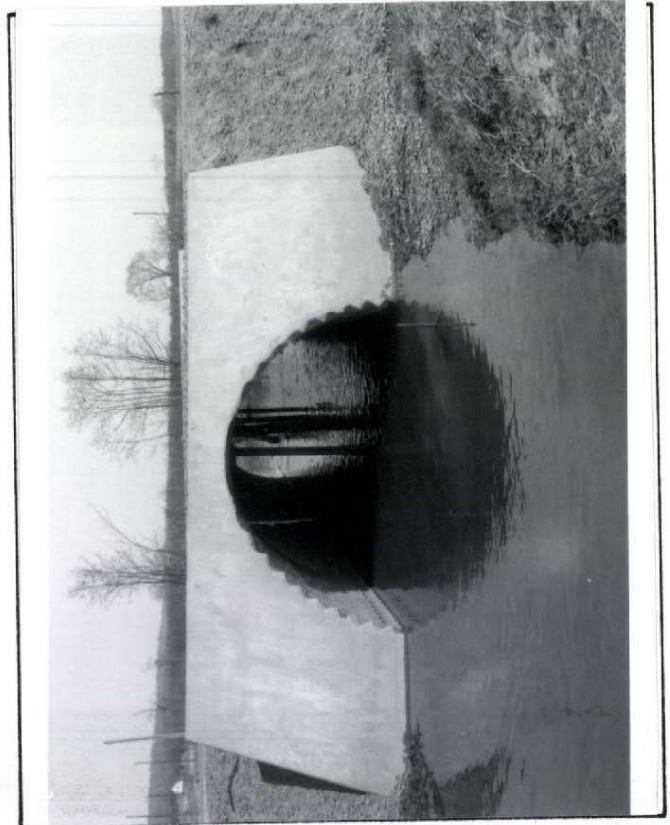
Looking Back



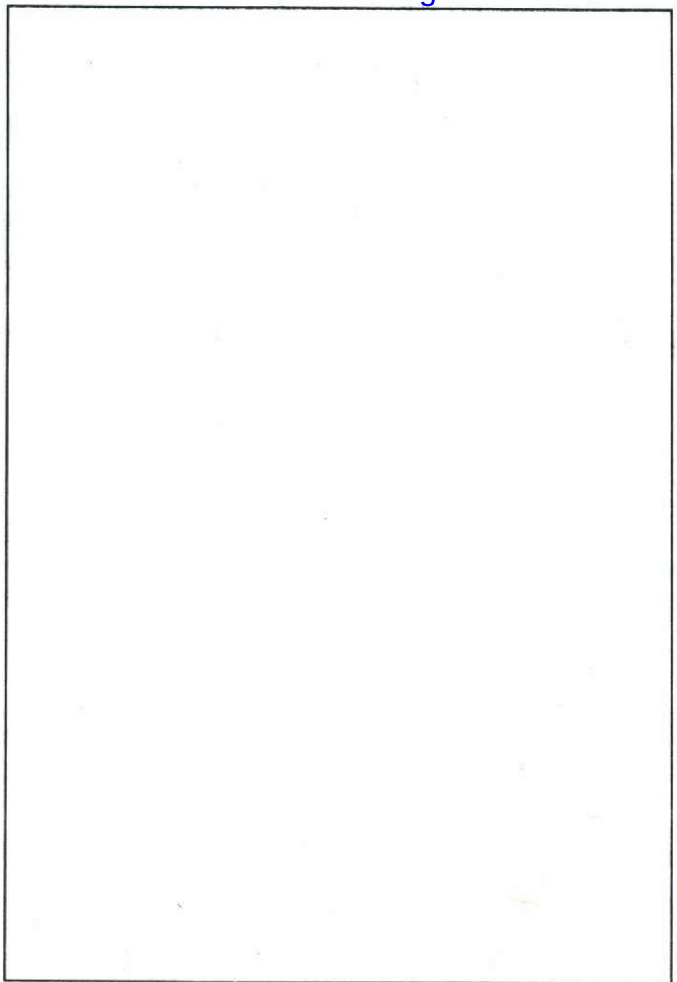
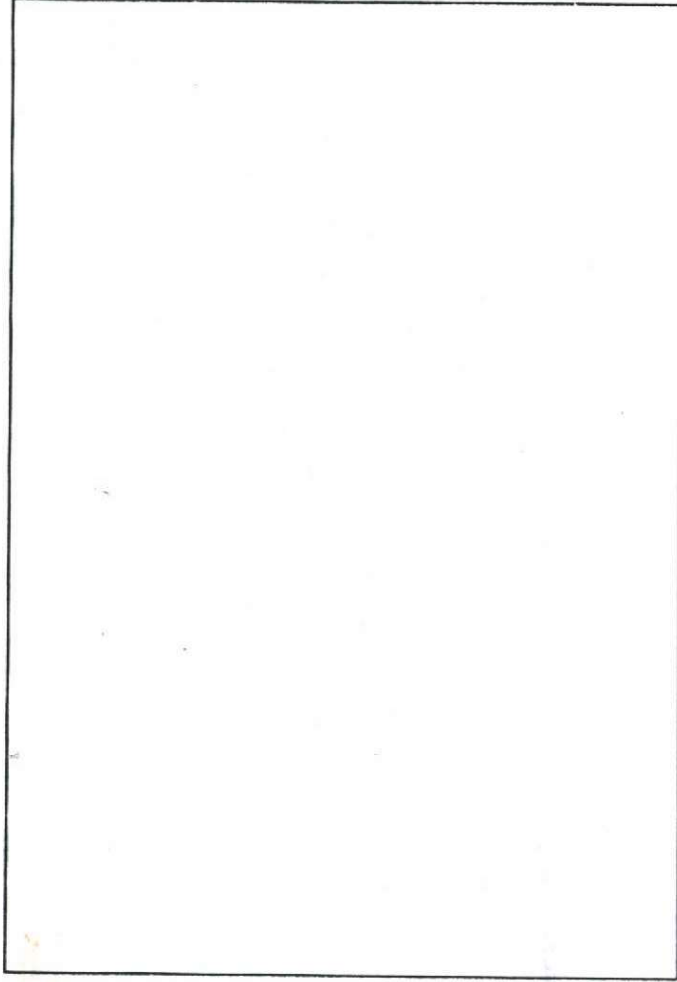
Looking Downstream (Lt. Side)



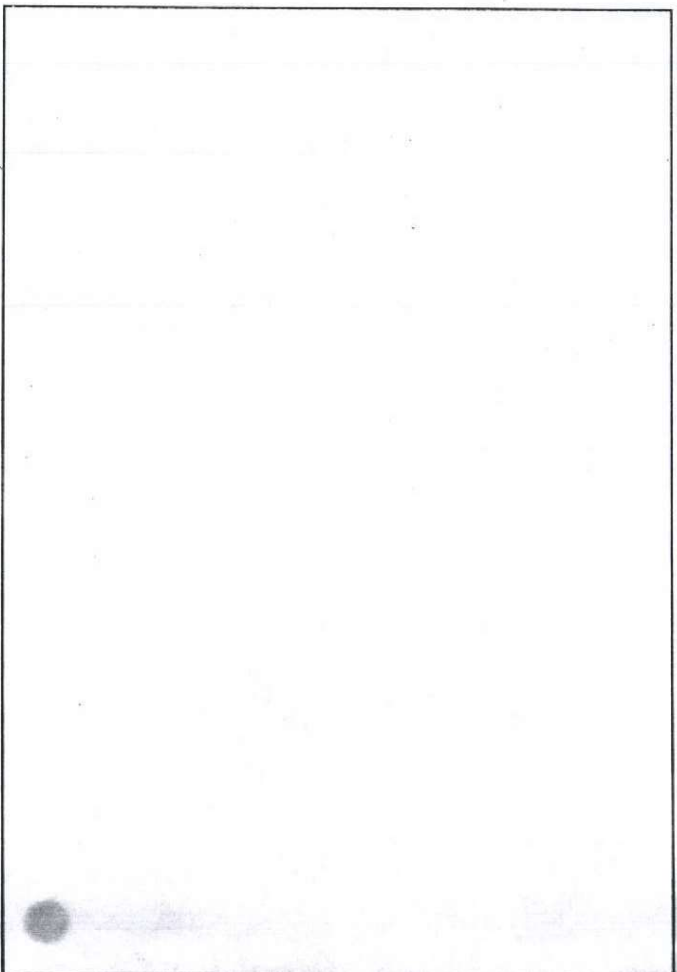
Looking Ahead



Looking Upstream (Rt. Side)



Looking Down Stream Into Structure, MPPA



COUNTY ERIE S. R. 3025 SEG. 0220 OFF. 2157 DATE 3-1-94

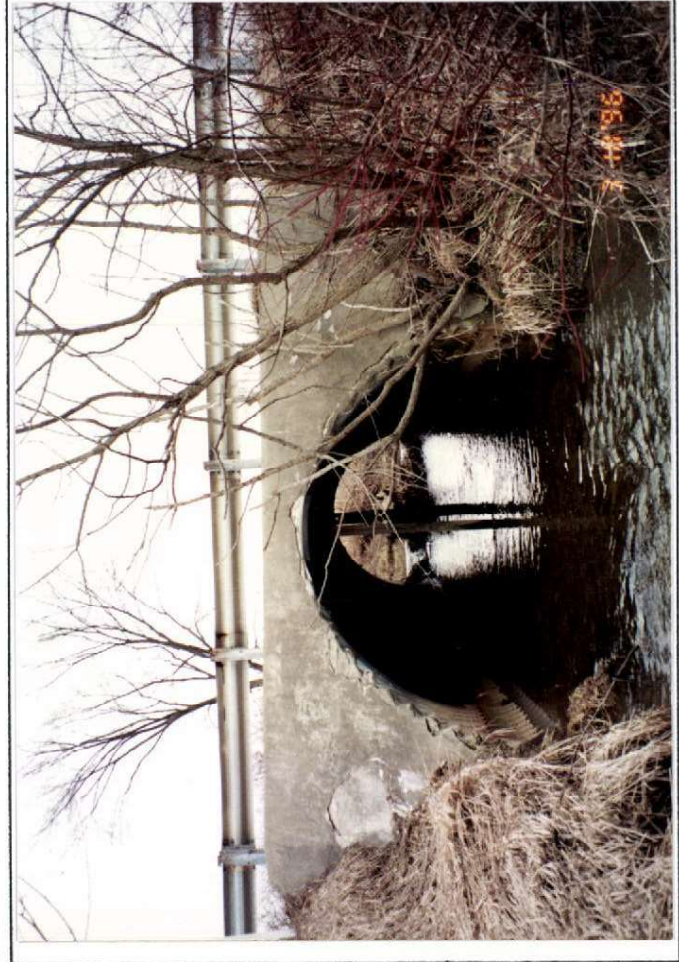
C.T.A.
(I.D.)



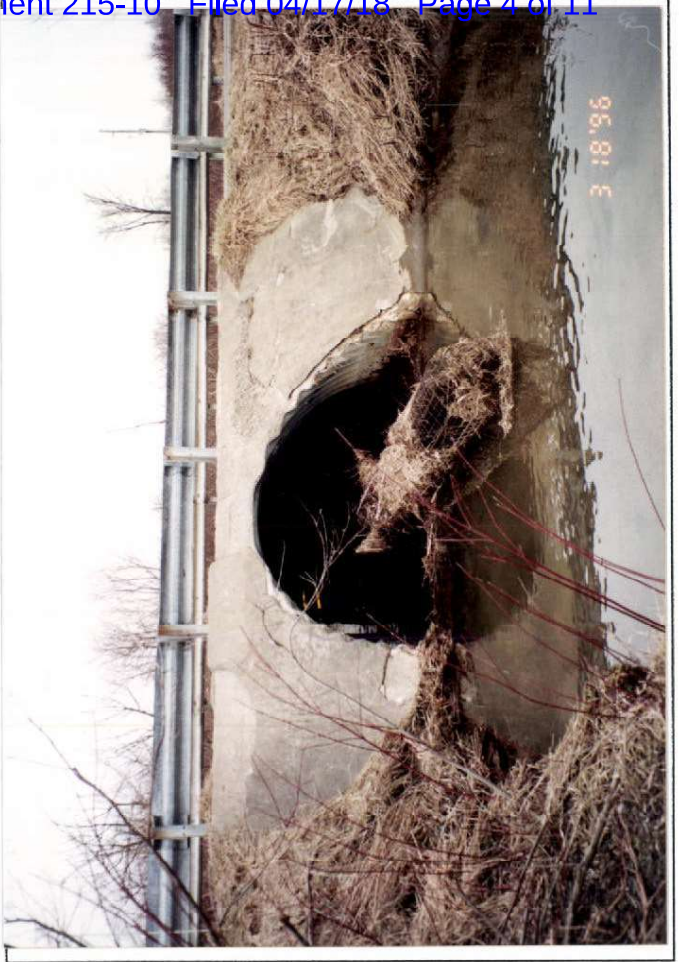
LOOKING SEGMENTS AHEAD



LOOKING SEGMENTS BACK

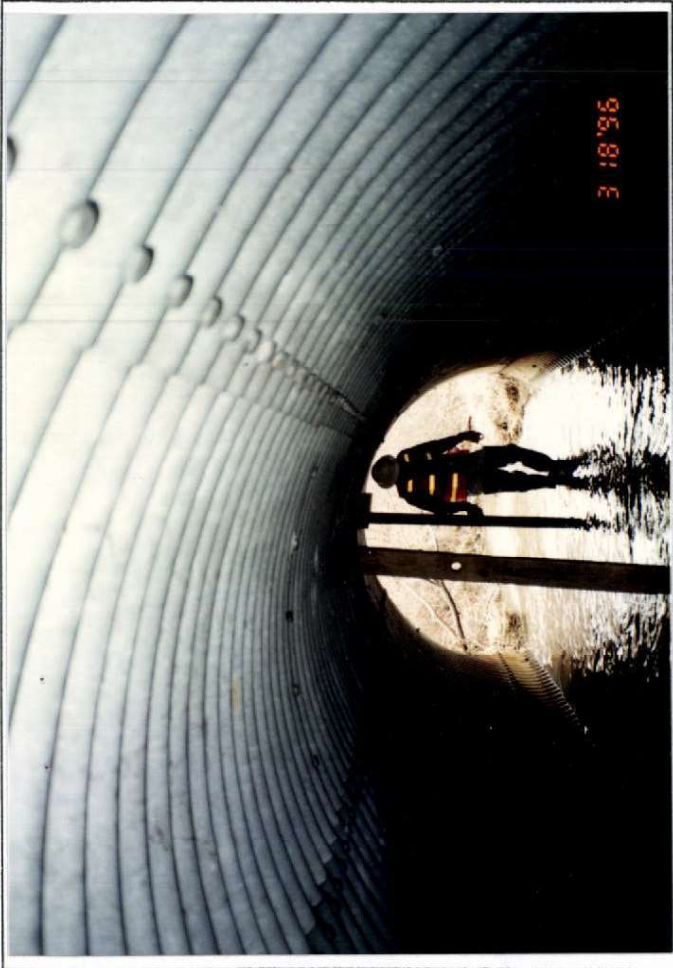


LOOKING @ LEFT SIDE CULVERT OUTLET

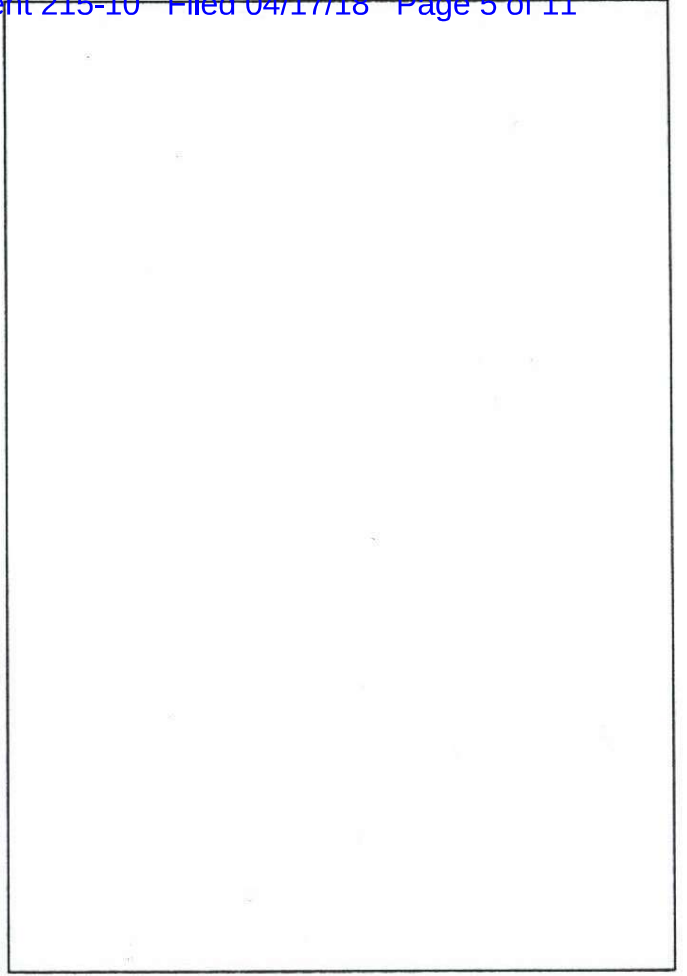
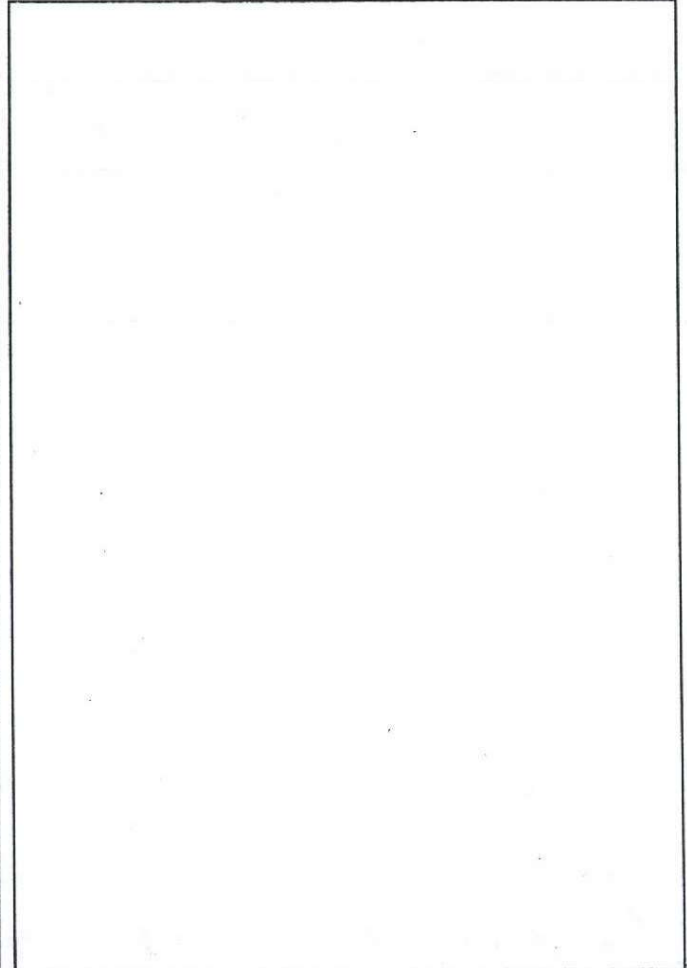
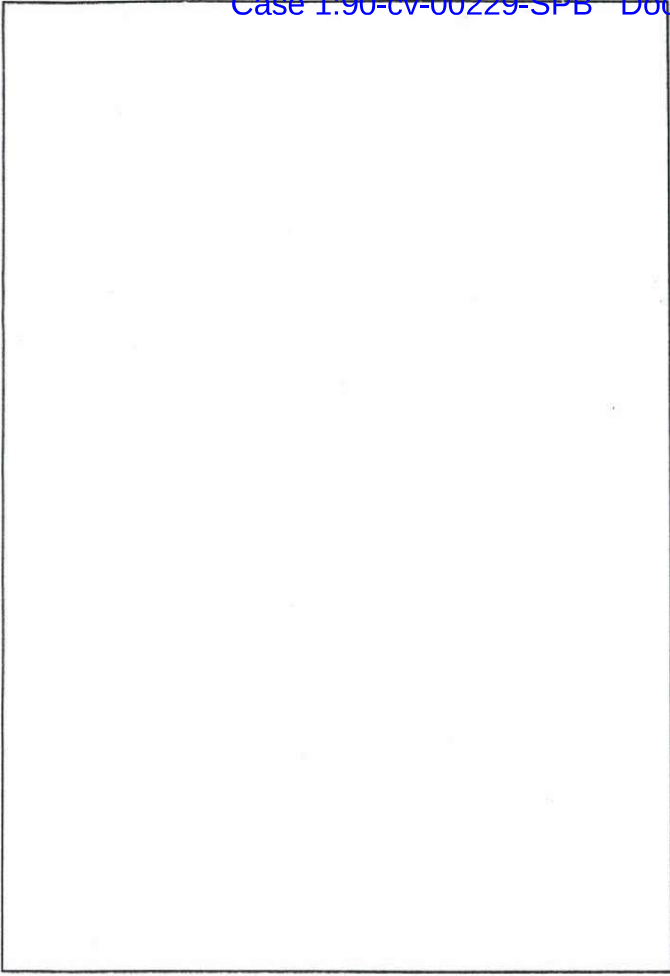


LOOKING @ RIGHT SIDE CULVERT

COUNTY ERIE S. R. 3025 SEG. 0220 OFF. 2147 DATE 3/18/96
(L.R. _____, STA. _____)



UNDER LOOKING DOWNSTREAM AT SUPPORTS



COUNTY ERIE S. R. 3025 SEC. 0220 OFF. 2147 DATE 3/18/96
(L.R. , STA.)



BEAVER DAM BLOCKING INLET



DERIS & DEIFT COLLECTING ON SHORELINE

COUNTY Essex S. R. 3025 SEG. 0220 OFF. 2147 DATE 02/23/00
(L.R. , STA.)

2002.02.28.xls

12/18/2017



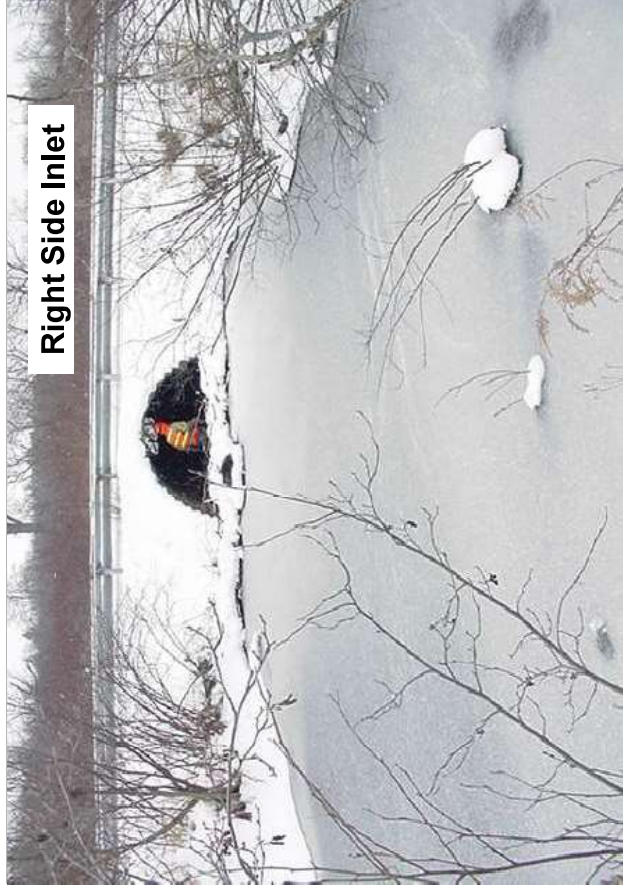
Looking Ahead



Looking Back



Left Side Outlet



Right Side Inlet

BMS NUMBER: 25-3025-0020-2147

OVER: Elk Creek

DATE: 2/28/2002

2002.02.28.xls

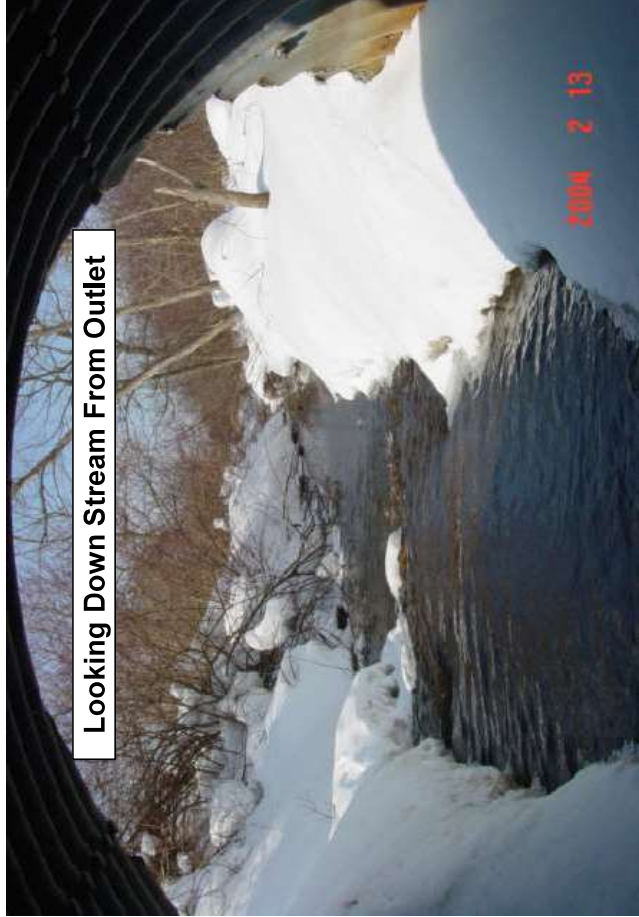


Inlet

12/18/2017



Looking Under Toward Outlet



Looking Down Stream From Outlet



Through > u/s --- note: debris caught on shoring

BMS NUMBER: 25-3025-0020-2147

OVER: Elk Creek

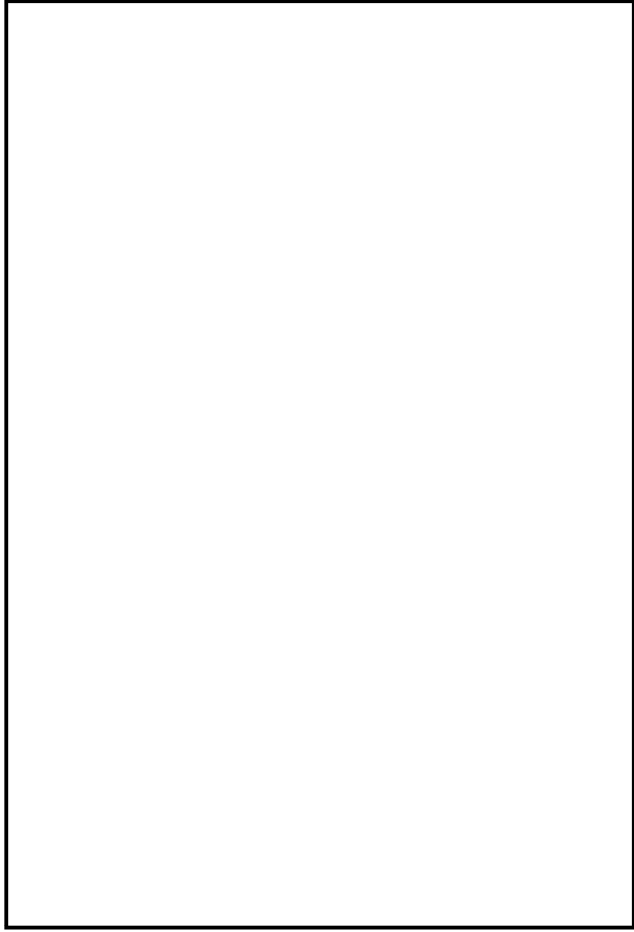
DATE: 2/28/2002

12/18/2017



Looking Under Toward Outlet

2004 2 13



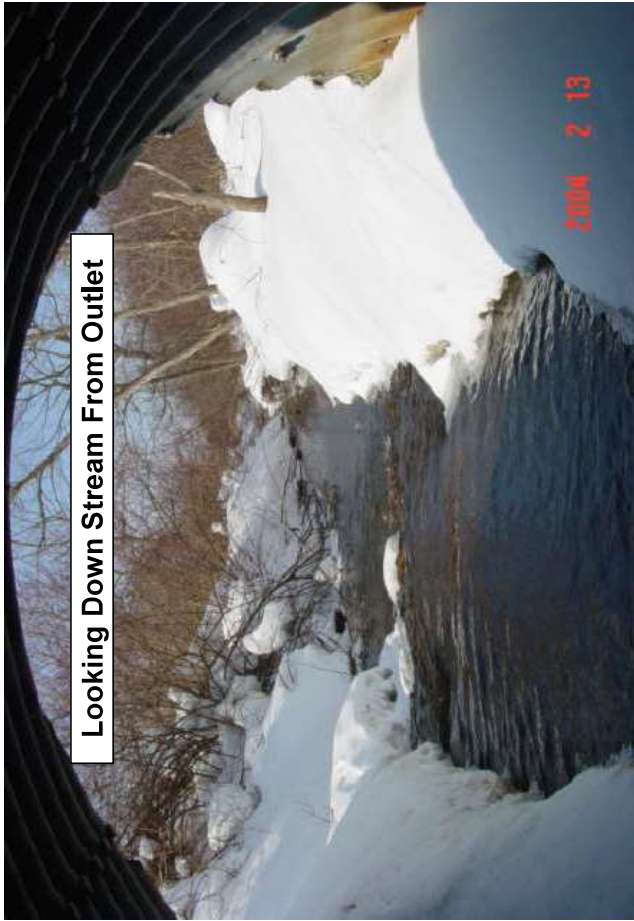
OVER: Elk Creek
DATE: 2/17/2004

2004.2.17Insp.xls



Inlet

2004 2 13



Looking Down Stream From Outlet

2004 2 13

BMS NUMBER: 25-3025-0220-2147



