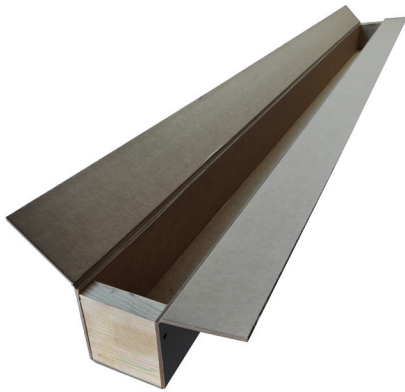


HIGH STRENGTH, DURABLE PACKAGING SYSTEM

FLEXFORM



REPLACE:

*Labor Intensive Wood Crates,
Tri-wall Containers, Preformed
U-shapes, Weak Paper Tubes,
Corrugated "Dust covers"*

SPECIFICATIONS

EASY ASSEMBLY

Economical Assembly
Assembles in 5 minutes.

THICKNESSES

.080 - .300 Caliper

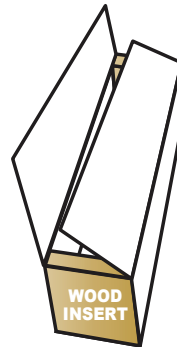
CONSTRUCTION

High Strength Ratings:
Comparable to wood.
Superior Beam Strength for
long flexible items.
Puncture Resistant
White exterior standard
Laminated, Virgin Kraft / Recycled
Paperboard Combination

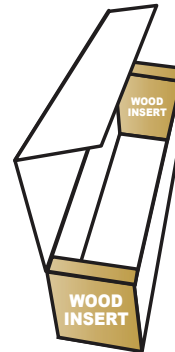
SHIPPING & STORAGE

Ship & Store flat!
(minimal storage space required)

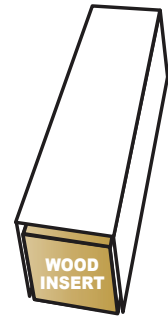
TOP FLAP
CONSTRUCTION



SIDE FLAP
CONSTRUCTION



2 PIECE
CONSTRUCTION



STANDARD SIZES

5 Panel Crate (Top & Side Closure)
2 Piece - 3 Panel Crate
**Also Available in Triangular,
Jumbo Corners & Flat Sheets.**
Paper widths 10" - 42"
Lengths 20" - 300"

PRINTING / COATINGS

Printing of Company name, Logo,
Moisture Resistant, NO-MAR Coating,
Corrosion Inhibitive, Abrasion Resistant,
Double Sided Tape

Current Flexform Packaging Applications Include:

- *Aircraft Parts
- *Manufactured Parts
- *Bar Stock
- *Light Poles
- *Tubing
- *Aluminum Extrusions

Tisdale Converting, L.L.C.
4918 Construction Ave / Monroe, LA 71203
Toll free (877) 776-8337 / Fax (318) 651-0001
www.tisdaleconverting.com

"Celebrating over 40 years of innovation in paper packaging"