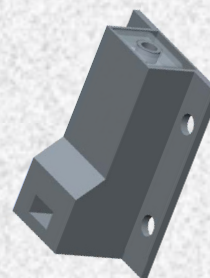


Remote Prism™ Tunnel, new from ProTVSolutions Solves the IR Interference Problem of Multiple TV's in One Room. Specifically Designed for Bars/Restaurants and Fitness Centers.



**Specifically
Designed for
Bars/Restaurants
and Fitness Centers**

When putting cable or satellite boxes on bar or fitness TV's, the remote control can interfere with adjacent TV's. The Remote Prism™ Tunnel solves that problem by reducing the IR pickup angle of the Remote Prism™, IR receiver. The Tunnel is mounted on the TV or wall directly below the TV. Bartenders, fitness center customers, or staff can now use their remotes and not worry about powering on/off, changing channels, or changing the volume of the adjacent, or nearby TV's.



Key features

- Any number of **Remote Prism™ Tunnels** can be used in a bar or fitness location.
- Easy to install, can be mounted in less than 1 minute, then plugs into the cable box IR Input.
- Can be mounted vertically for wider IR pickup angle, horizontally for narrower IR pickup angle
- Now includes the **Remote Prism™**
- Detachable 2M cable to fit most installations, can be extended to longer lengths if necessary